

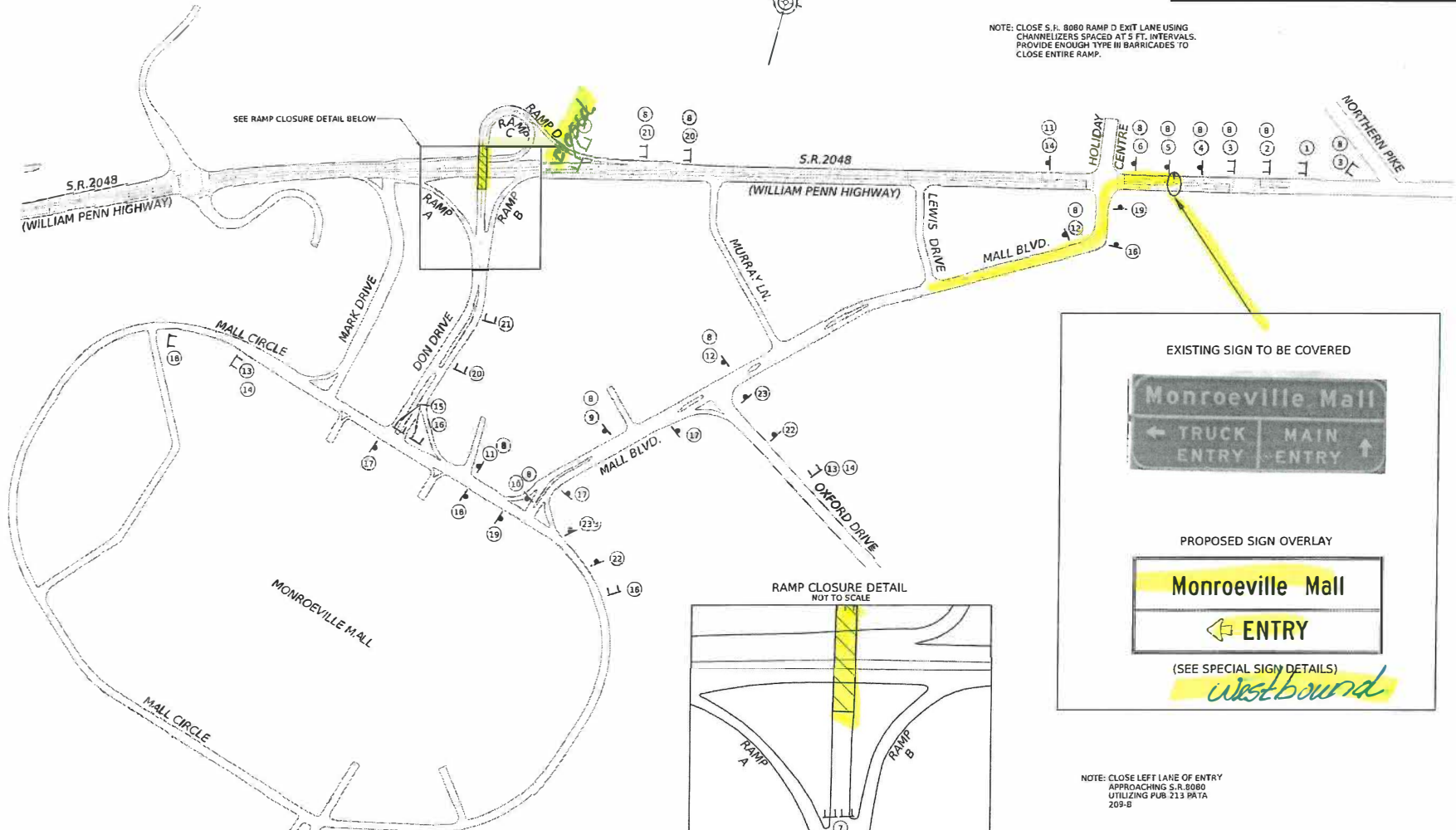
## Monroeville Mall Bridge Construction

Golden Triangle Construction will be doing work on the bridge connecting William Penn Highway (Rt. 22) westbound to Don Drive (Mall Entrance). The closure is scheduled to begin the morning of Tuesday, May 28<sup>th</sup> and anticipated the last until August 15<sup>th</sup>. Please see map below showing detour.

3-MIN-2022-1212  
KUTTEL

DISTRICT	COUNTY	ROUTE	SECTION	SHEET
11-0	ALLEGHENY	2048	A14	7 OF 47
MUNICIPALITY OF MONROEVILLE				
REV NO	REVISIONS	DATE	BY	APPD

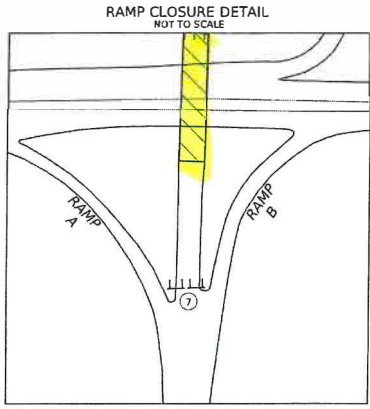
NOTE: CLOSE S.R. 8080 RAMP D EXIT LANE USING CHANNELIZERS SPACED AT 5 FT. INTERVALS. PROVIDE ENOUGH TYPE III BARRICADES TO CLOSE ENTIRE RAMP.



EXISTING SIGN TO BE COVERED

PROPOSED SIGN OVERLAY

(SEE SPECIAL SIGN DETAILS)



NOTE: CLOSE LEFT LAKE OF ENTRY APPROACHING S.R. 8080 UTILIZING PUB. 213 PATA 209-B

LEGEND  
 CONSTRUCTION AREA



BMS 02-8080-0500-0575 DETOUR  
NOT TO SCALE

# TRAFFIC CONTROL PLAN

OPERATOR: mclintock  
FILE NAME: c:\pwworking\mclintock\mclintock\p2085\022080A14\_TBCC.dwg