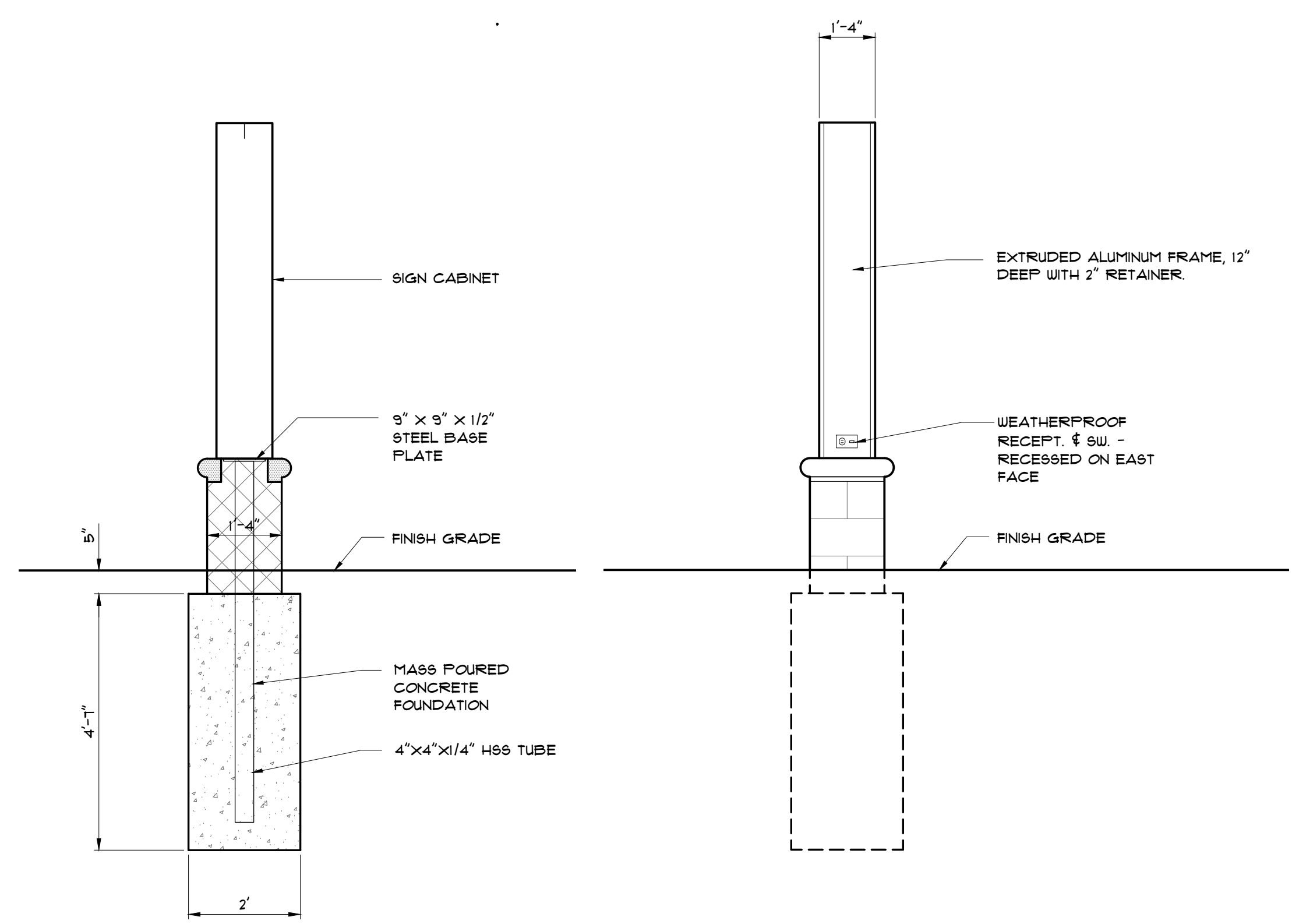
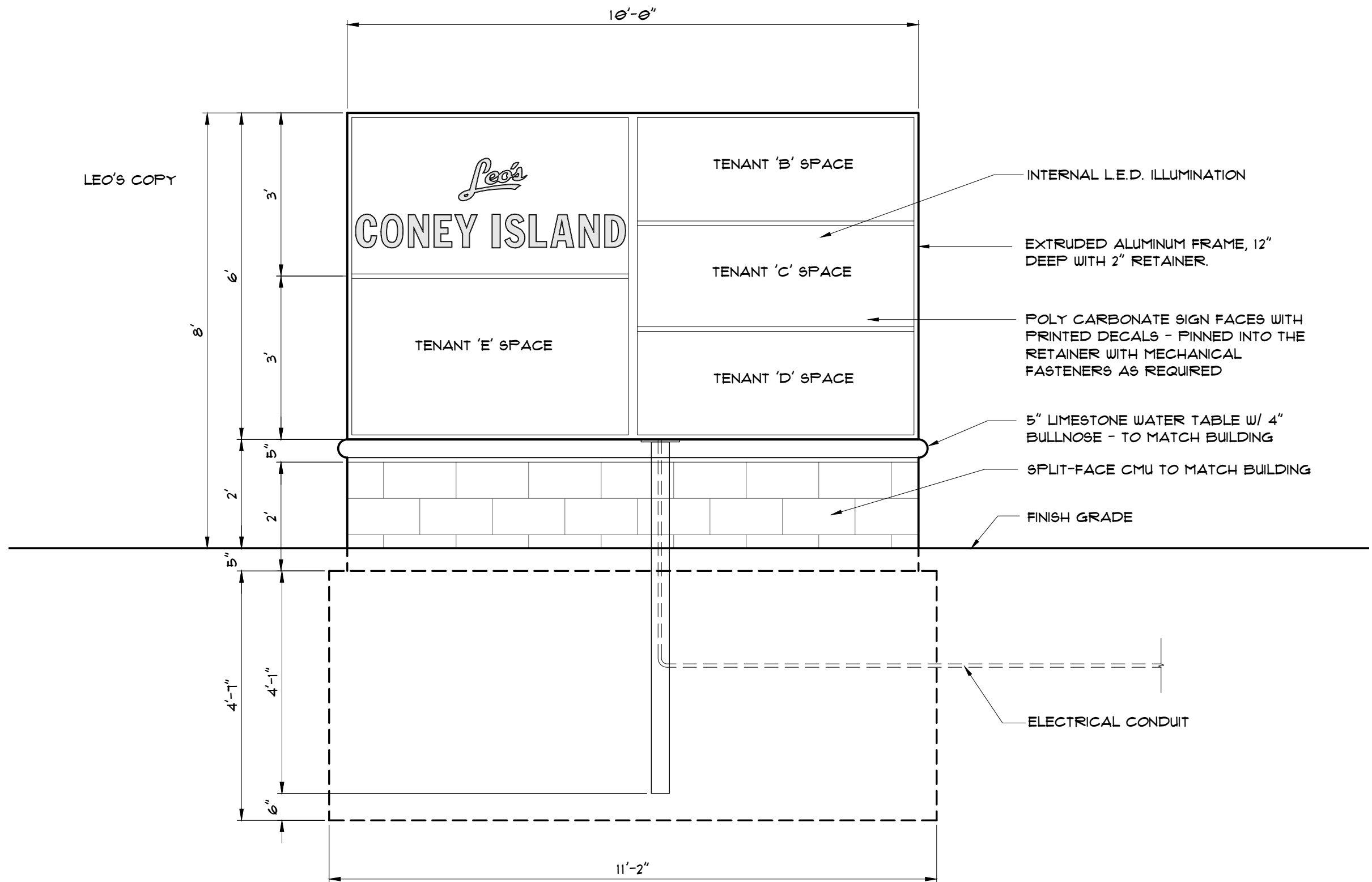


SIGN SITE PLAN SCALE 1" = 30' WHEN PRINTED AT 42" X 30"

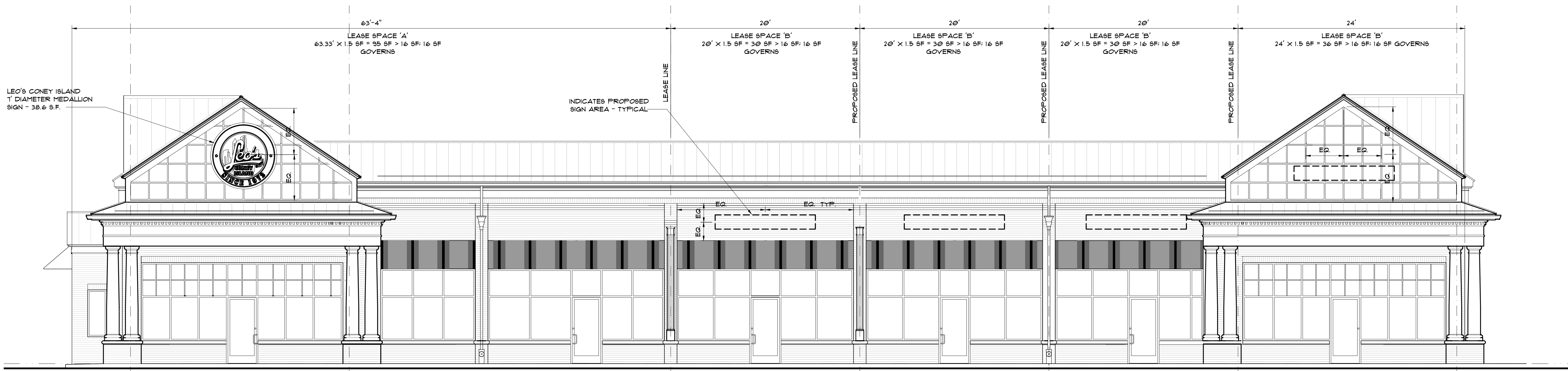


CROSS SECTION SCALE 1/2" = 1'-0" EAST ELEVATION WEST ELEVATION SIMILAR SCALE 1/2" = 1'-0"



SOUTH ELEVATION NORTH ELEVATION OPP. HAND 60 SQ. FT. SIGN FACE SCALE 1/2" = 1'-0"

MONUMENT SIGN DETAILS SCALE 1/2" = 1'-0" PRINTED AT 42" X 30"



EAST ELEVATION SCALE 3/16" = 1'-0" PRINTED AT 42" X 30"

C:\Users\Matthew.Ray\OneDrive\Documents\21-06\21-06-FM\SS\21-06-A-4.2.dwg, A-4.2, 2/5/2024, 10:34:36 AM, AutoCAD PDF (General Documentation) p3, ARCH full labeled ET (80.00 x 45.00 inches), 1:1