

COLOR KEY

- BROWN
- SPANISH MOSS
- OLIVE
- GRANITE
- GREEN
- OLIVE/BLACK
- GREEN/TAN



COLOR KEY

- BROWN
- SPANISH MOSS
- OLIVE
- GRANITE
- GREEN
- OLIVE/BLACK
- GREEN/TAN

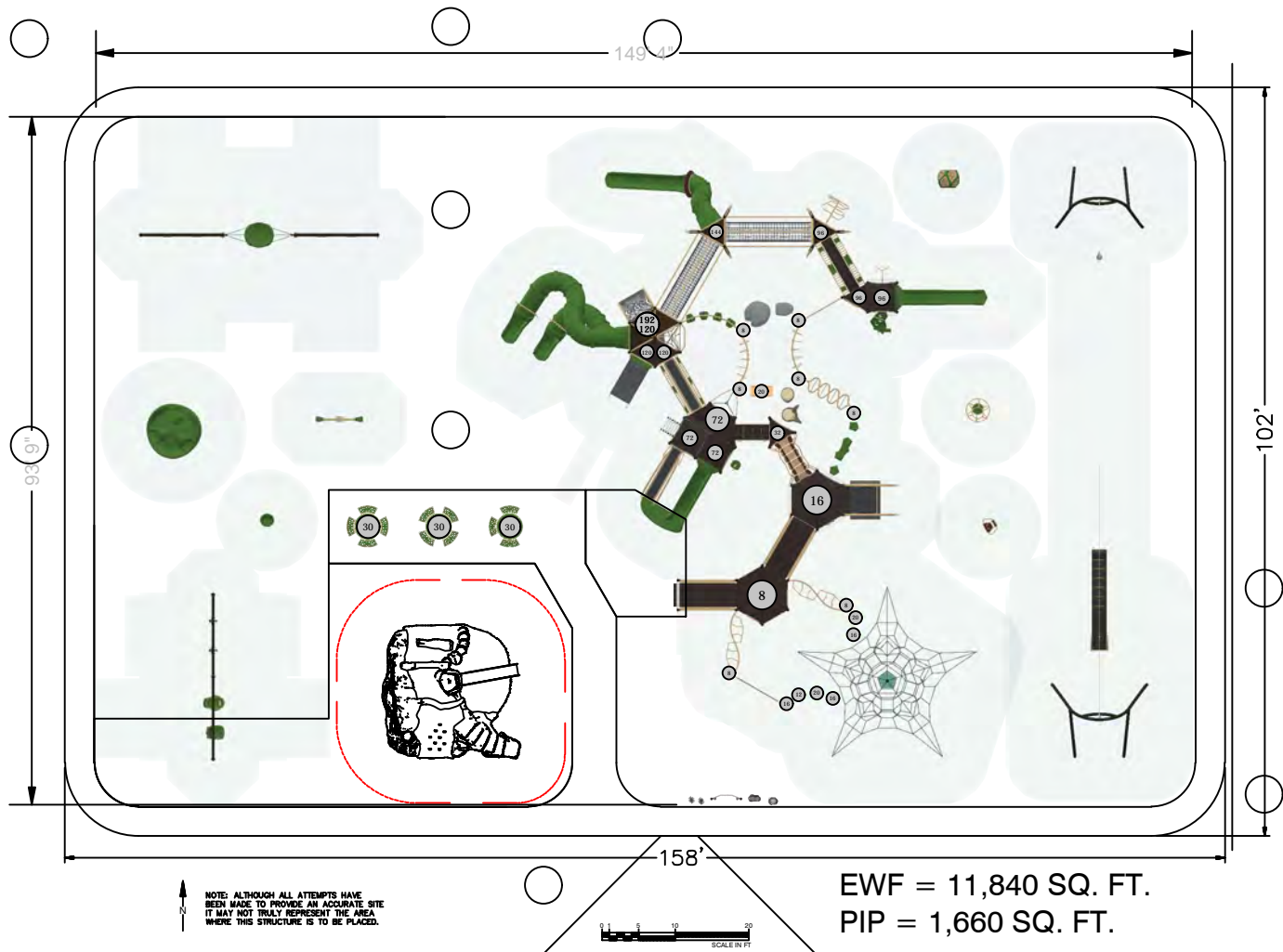












**SERIES** Nucleus | Intensity | Burke Basics

**GROUP:**

5-12 Structure|Play Ensemble|Freestanding

**DESIGNED FOR AGES:**

5 to 12, 2 to 12

**Viroqua - Ekhart Park**

Viroqua, WI 54665

**Burke**  
PLAY THAT MOVES YOU

**SITE PLAN VIEW**

06/03/2025

**Lee Recreation, LLC**

142-202565-1

Designer: Kathleen Yttri

BCI BURKE COMPANY, LLC | PO BOX 549 FOND DU LAC, WI 54936-0549 | 920.921.9220 | BCI@BURKE.COM

**OVERALL BOUNDING OF USE ZONES**

Area: 13991.4 sq.ft.  
Perimeter: 486 ft.

**STRUCTURE SIZE:** 9"x149' 4"

**POST SIZE(S):**

\*\*The space requirements shown here are to ASTM standards. Requirements for other standards may be different.

**PLAYGROUND ACCESSIBILITY (Provided/Required)**

TOTAL EVENTS	ELEVATED EVENTS	TRANSFER ACCESSIBLE EVENTS	RAMP ACCESSIBLE EVENTS	GROUND EVENTS	TYPES OF GROUND EVENTS
69	29 / 15	10 / 7	9 / 8	39 / 10	9 / 5

The use and layout of play components identified in this plan conform to the CPSC guidelines. U.S. CPSC recommends the separation of age groups in playground layouts.

Warning: Accessible safety surfacing material is required beneath and around this equipment that is compliant with ASTM, CPSC, and ADAAG requirements.



DATE: June 3, 2025  
 TO: Viroqua Parks  
 124 W. Decker St.  
 Viroqua, WI 54665  
 FROM: Pat Groom  
 RE: Playground Proposal #142-202565-1

### BCI BURKE "Play That Moves You"

Playground Proposal #142-202565-1  
 69 Play Events for an estimated 401 users ages 2-12

1-#NUCLEUS	Modular Structure, 5-12	\$337,443.00
<b>DECKS:</b> 6-Triangle, 3- Square, 2-Hexagonal, 3-Half Hexagon		
<b>RAMP:</b> 1-ADAAG Ramp w/ Guardrail, 1-ADAAG Entrance Ramp w/ Guardrail		
<b>BRIDGE:</b> Evolution Arched Catwalk Bridge		
<b>TUNNEL:</b> 2-Aspire Rope Tunnels		
<b>SLIDES:</b> Cobra Slide Curved @ 120" Deck Ht., Cobra Slide Curved @ 196" Deck Ht., Velo XL Slide @ 96" Deck Ht., 360 Loop w/ Slide @ 72" Deck Ht., Cobra Slide Fusion 'S' Slide @ 144" Deck Ht.		
<b>ROOFS:</b> 3-Evolution Triangle Apex Roofs, 2-Triangle Base Roof, 2-Clubhouse Retreat Roofs, 1- Clubhouse Hex Roof		
<b>UPPERBODY:</b> 2-Straight Overhead, 2-'S' Horizontal Ladder		
<b>MOTION:</b> Innova Rocker		
<b>CLIMBERS:</b> Linx Levitate, Evolution 360 Inclusive Climber, Pursuit Climber, Victory Climber, Formis Ladder, Twisting Traverse, Verve Climber, Evolution Deck to Roof Climber, Shasta Climber, Nucleus Core Climber, Atom Climber, Mesa Climber, Rope Triangle Climber, Approach Climber, Nature Play Horizontal Split Log Climber, RopeVenture Sky5, Trango Climber		
<b>BALANCE/CLIMBING/SOCIAL:</b> 8-Ovistep Launch Pads, 5-FlyLow Step Pods, 2-Nature Play Stumps (1-Small, 1-Large), 2-Nature Play Rocks (1-Small, 1-Medium), Eko Solo, Eko Solo Inverted, Eko Bench		
<b>PLAY/ACTIVITY/PANELS:</b> 3-In-A-Row Panel, Rain Wheel Panel, Bee Panel, Hide-the-Numbers Panel		
1-#MUSIC	PlayEnsemble Music Station	\$ 13,724.00
<b>INCLUDES:</b> 1-FlowerGarden Poppy, 1-FlowerGarden Cosmo, 1-PlayEnsemble Bongo Set, 1-Babel Drum, 1-Titan Chimes Hue		
1-#SWINGS	2-Bay - Single Post Swing Assembly	\$ 6,341.00
<b>INCLUDES:</b> 2-Tot Swing Seats, 1-Freedom Swing Seat, 1-Konnections Swing		
1-#SWINGS	3-Bay - Single Post Swing Assembly	\$ 11,522.00
<b>INCLUDES:</b> 4-Belt Swing Seats, 1-Cirrus		
1-#550-0206	ZipVenture	\$ 19,031.00
1-#560-0073	Nido Spinner	\$ 4,250.00
1-#560-2735	Aro Spinning Chair	\$ 1,501.00
1-#570-0055	2 Seat Rocker	\$ 2,463.00
1-#560-2573	KidForce Spinner	\$ 972.00
1-#560-2579	Volta Inclusive Spinner w/ Footer	\$ 8,429.00
1-#560-2586	Comet I	\$ 2,406.00
2-#580-1341	Novo Picnic Table	\$4,074 \$ 8,148.00
1-#580-1313	Novo Picnic Table ADAAG	\$ 3,431.00

### Cre8Play

1-#Cre8Play	Cre8Play Jurassic PlayMound	\$103,600.00
-------------	-----------------------------	--------------



Subtotal Equipment	\$523,261.00
Additional Discount	(\$ 62,949.00)
Assembly/Installation	\$156,978.00
Surfacing	\$ 56,957.00
Freight	<u>\$ 4,000.00</u>
<b>TOTAL</b>	<b>\$678,247.00</b>

**SURFACING OPTIONS:**

- 1) 511 yd<sup>3</sup> Engineered Wood Fiber Surfacing Delivered Only - @ **\$13,797.00**
- 2) 1,660 ft<sup>2</sup> Playbound (™) Poured-In-Place Surfacing - @ **\$43,160.00**
  - Consists of a 50% Color – 50% Black speckled mix.
  - 24-hour security of site until product sets is the responsibility of the customer.

Quote Accepted by: \_\_\_\_\_ Date: \_\_\_\_\_

---

**Terms:** Net 20

**Marking of Private Lines, Site Preparation, Disposal of Garbage, Security of the Site Until Surfacing Sets & Site Restoration is the responsibility of the customer.**

**Lead time:** 10-12 Weeks Upon Receipt of Order

**Quote Effective:** **Until 07-03-2025**