



COLOR KEY

	BROWN
	SPANISH MOSS
	OLIVE
	GRANITE
	GREEN
	OLIVE/BLACK
	GREEN/TAN



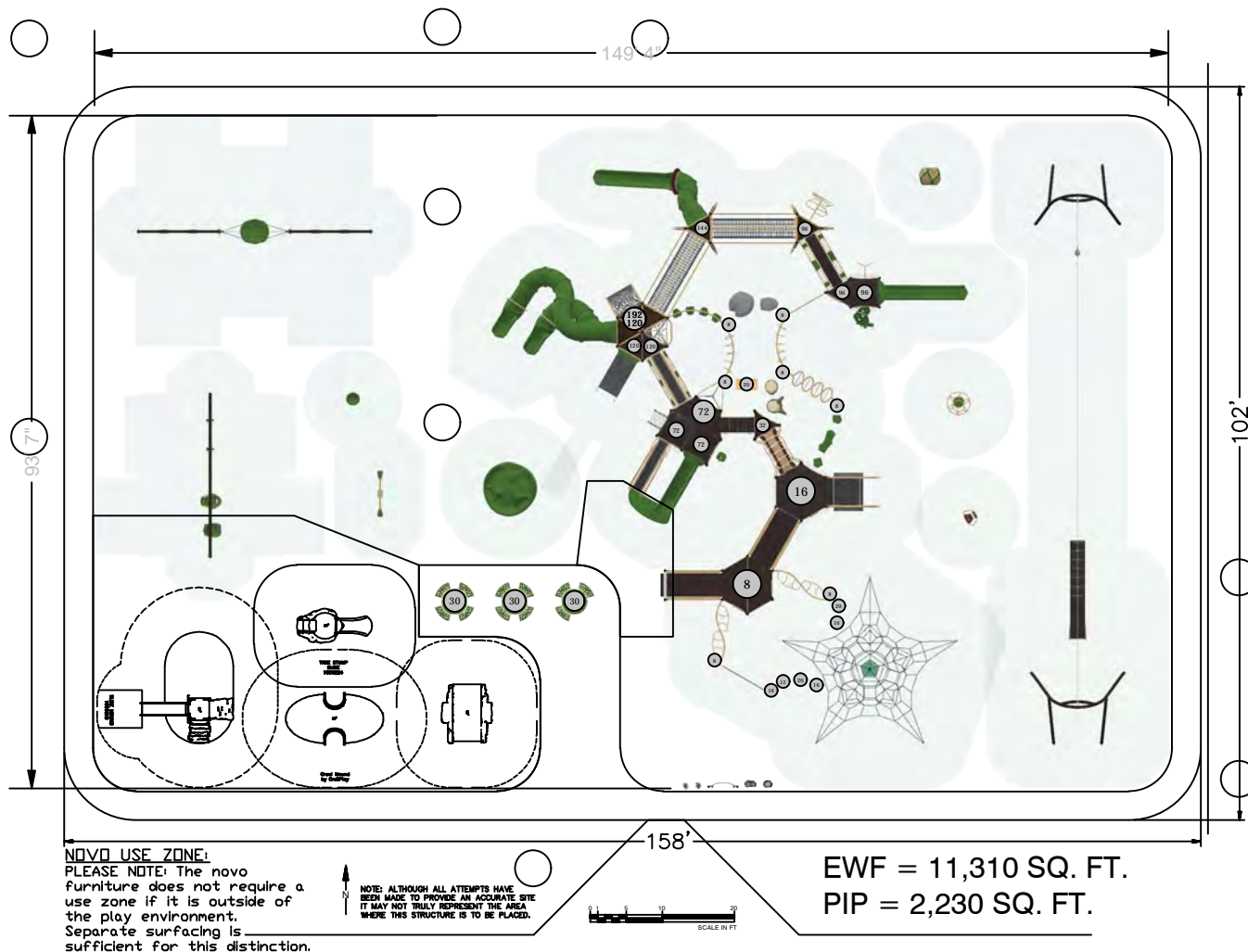












EWF = 11,310 SQ. FT.
PIP = 2,230 SQ. FT.

SERIES Nucleus | Intensity | Burke Basics

GROUP:

Structure|Play|Ensemble|Freestanding

DESIGNED FOR AGES:

5 to 12, 2 to 12

Viroqua - Ekhart Park

Viroqua, WI 54665

Burke
PLAY THAT MOVES YOU

SITE PLAN VIEW

06/02/2025

Lee Recreation, LLC

142-196560-5

Designer: Denise Stalinger

BCI BURKE COMPANY, LLC | PO BOX 549 FOND DU LAC, WI 54936-0549 | 920.921.9220 | BCI@BURKE.COM

OVERALL BOUNDING OF USE ZONES

Area: 13969.1 sq.ft.
Perimeter: 485.7 ft.

STRUCTURE SIZE: 7"x149' 4"

POST SIZE(S):

**The space requirements shown here are to ASTM standards. Requirements for other standards may be different.

PLAYGROUND ACCESSIBILITY (Provided/Required)

TOTAL EVENTS	ELEVATED EVENTS	TRANSFER ACCESSIBLE EVENTS	RAMP ACCESSIBLE EVENTS	GROUND EVENTS	TYPES OF GROUND EVENTS
69	29 / 15	10 / 7	9 / 8	39 / 10	9 / 5

The use and layout of play components identified in this plan conform to the CPSC guidelines. U.S. CPSC recommends the separation of age groups in playground layouts.

Warning: Accessible safety surfacing material is required beneath and around this equipment that is compliant with ASTM, CPSC, and ADAAG requirements.



DATE: June 3, 2025
 TO: Viroqua Parks
 124 W. Decker St.
 Viroqua, WI 54665
 FROM: Pat Groom
 RE: **Playground Proposal #142-196560-5**

BCI BURKE "Play That Moves You"

Playground Proposal #142-196560-5
 69 Play Events for an estimated 401 users ages 2-12

1-#NUCLEUS	Modular Structure, 5-12	\$337,443.00
DECKS: 6-Triangle, 3- Square, 2-Hexagonal, 3-Half Hexagon		
RAMP: 1-ADAAG Ramp w/ Guardrail, 1-ADAAG Entrance Ramp w/ Guardrail		
BRIDGE: Evolution Arched Catwalk Bridge		
TUNNEL: 2-Aspire Rope Tunnels		
SLIDES: Cobra Slide Curved @ 120" Deck Ht., Cobra Slide Curved @ 196" Deck Ht., Velo XL Slide @ 96" Deck Ht., 360 Loop w/ Slide @ 72" Deck Ht., Cobra Slide Fusion 'S' Slide @ 144" Deck Ht.		
ROOFS: 3-Evolution Triangle Apex Roofs, 2-Triangle Base Roof, 2-Clubhouse Retreat Roofs, 1- Clubhouse Hex Roof		
UPPERBODY: 2-Straight Overhead, 2-'S' Horizontal Ladder		
MOTION: Innova Rocker		
CLIMBERS: Linx Levitate, Evolution 360 Inclusive Climber, Pursuit Climber, Victory Climber, Formis Ladder, Twisting Traverse, Verve Climber, Evolution Deck to Roof Climber, Shasta Climber, Nucleus Core Climber, Atom Climber, Mesa Climber, Rope Triangle Climber, Approach Climber, Nature Play Horizontal Split Log Climber, RopeVenture Sky5, Trango Climber		
BALANCE/CLIMBING/SOCIAL: 8-Ovistep Launch Pads, 5-FlyLow Step Pods, 2-Nature Play Stumps (1-Small, 1-Large), 2-Nature Play Rocks (1-Small, 1-Medium), Eko Solo, Eko Solo Inverted, Eko Bench		
PLAY/ACTIVITY/PANELS: 3-In-A-Row Panel, Rain Wheel Panel, Bee Panel, Hide-the-Numbers Panel		
1-#MUSIC	PlayEnsemble Music Station	\$ 13,724.00
INCLUDES: 1-FlowerGarden Poppy, 1-FlowerGarden Cosmo, 1-PlayEnsemble Bongo Set, 1-Babel Drum, 1-Titan Chimes Hue		
1-#SWINGS	2-Bay - Single Post Swing Assembly	\$ 6,341.00
INCLUDES: 2-Tot Swing Seats, 1-Freedom Swing Seat, 1-Konnections Swing		
1-#SWINGS	3-Bay - Single Post Swing Assembly	\$ 11,522.00
INCLUDES: 4-Belt Swing Seats, 1-Cirrus		
1-#550-0206	ZipVenture	\$ 19,031.00
1-#560-0073	Nido Spinner	\$ 4,250.00
1-#560-2735	Aro Spinning Chair	\$ 1,501.00
1-#570-0055	2 Seat Rocker	\$ 2,463.00
1-#560-2573	KidForce Spinner	\$ 972.00
1-#560-2579	Volta Inclusive Spinner w/ Footer	\$ 8,429.00
1-#560-2586	Comet I	\$ 2,406.00
2-#580-1341	Novo Picnic Table	\$4,074 \$ 8,148.00
1-#580-1313	Novo Picnic Table ADAAG	\$ 3,431.00

Cre8Play

1-#Cre8Play	Cre8Play Nature Play Features	\$ 66,320.00
INCLUDES: Log Mound Tunnel, Crawl Mound, Tree Stump Slide and Slide Mound		



Subtotal Equipment	\$485,981.00
Additional Discount	(\$ 62,949.00)
Assembly/Installation	\$145,794.00
Surfacing	\$ 71,183.00
Freight	<u>\$ 4,000.00</u>
TOTAL	\$644,009.00

SURFACING OPTIONS:

- 1) 489 yd³ Engineered Wood Fiber Surfacing Delivered Only - @ **\$13,203.00**
- 2) 2,230 ft² Playbound (™) Poured-In-Place Surfacing - @ **\$57,980.00**
 - Consists of a 50% Color – 50% Black speckled mix.
 - 24-hour security of site until product sets is the responsibility of the customer.

Quote Accepted by: _____ Date: _____

Terms: Net 20

Marking of Private Lines, Site Preparation, Disposal of Garbage, Security of the Site Until Surfacing Sets & Site Restoration is the responsibility of the customer.

Lead time: 10-12 Weeks Upon Receipt of Order

Quote Effective: **Until 07-03-2025**