

Understanding the Benefits of EIT and Preservation

Maria Bentzoni, Farmland Preservation Administrator



What is an EIT?

- Earned Income Tax is a tax collected from those citizens who earn an income from working.
- A new EIT must be placed on the ballot. Ballot question will be voted on by the residents.
- If approved, the Supervisors will then pass an ordinance to adopt the EIT and then adopt an Open Space Plan.

•What is an Open Space Plan?

- Is an adopted plan that helps the Township protect natural resources, environmentally sensitive lands, agricultural lands, park land, recreation and open space.
- It provides the Township direction on how and what steps to take to protect its natural assets.
- Open Space Committee/Advisory Board would over see the program and make recommendations to the Board of Supervisors.

- **Municipalities that have an approved EIT and adopted an Open Space Plan in their municipality**

• Bushkill	2005	.25%
• Lower Mount Bethel	2006	.25%
• Lower Saucon	2006	.25%
• Moore	2005	.25%
• Plainfield	2007	.25%
• Upper Mount Bethel	2007	.25%
• Williams	2004	.25%

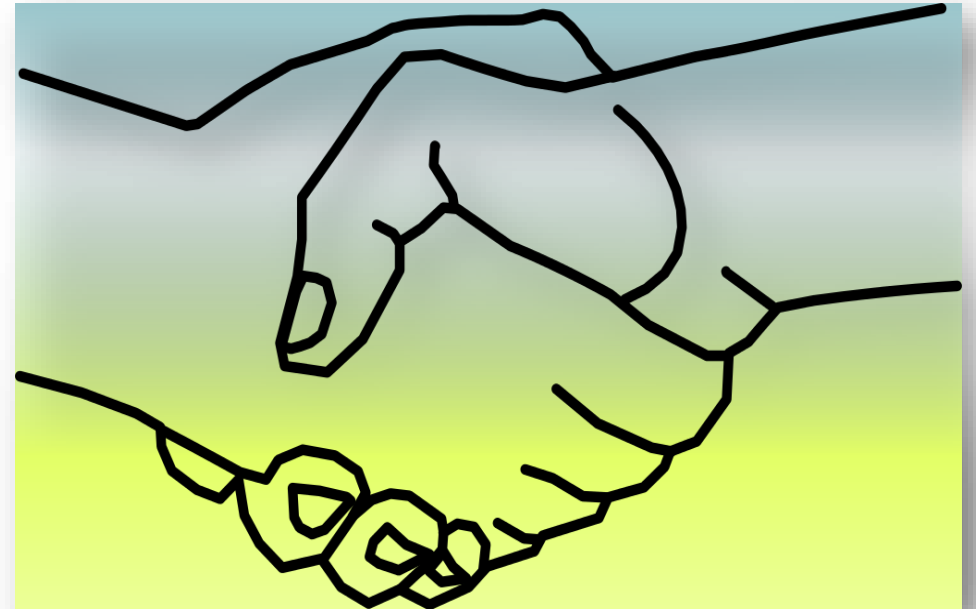
How will approving and adopting the EIT benefit the community?

- Many preservation grants require matching funds.
- EIT funds raised by a municipality can be used as a match for other grants.
- This allows grant funds to go much farther in funding a project.

Cooperation and partnerships are key.

Who can the Township partner with?

- State and County Agencies
- Land Conservancies/Land Trusts
- Watershed Associations
- Outdoor Clubs
- Recreation Associations
- Economic Development Groups
- Environmental Groups
- Various Community Organizations

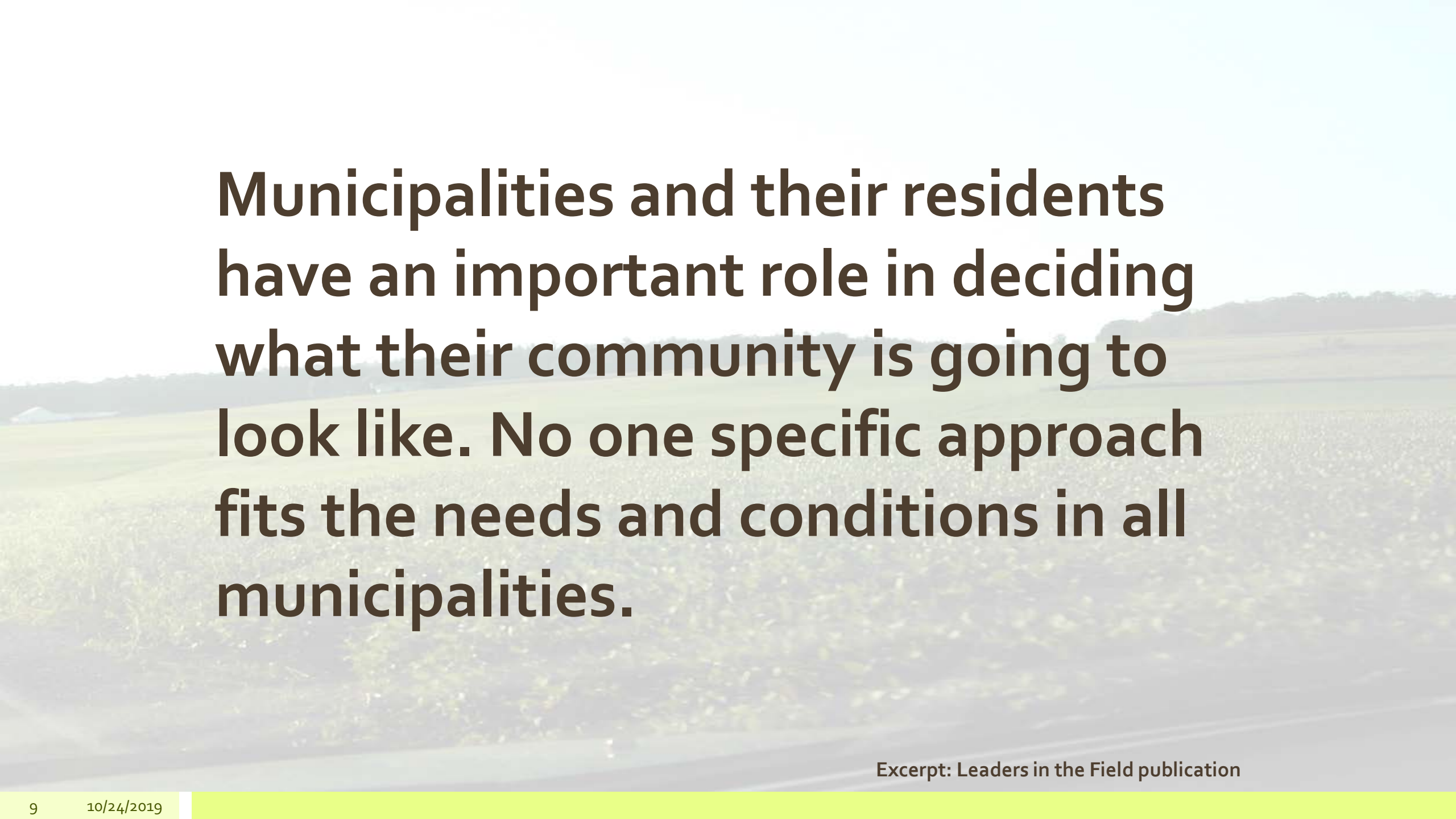


What can the EIT funds be used for?

- Farmland Preservation Easement purchases
- Natural Areas Easement purchases
- Fee simple land acquisitions
- Park land purchases
- Park land development
- Park land improvements
- Historic or cultural resource protection

The EIT funds can also be used for...

- Environmental restoration and or improvements
- Protection of watersheds/water quality
- Protection of wetlands
- Protection of forests and wooded corridors
- Protection of greenway corridors
- Protection of blueway corridors (rivers and streams)
- Protection of scenic viewsheds
- Protection of vulnerable/rare species habitat areas



Municipalities and their residents have an important role in deciding what their community is going to look like. No one specific approach fits the needs and conditions in all municipalities.

Excerpt: Leaders in the Field publication

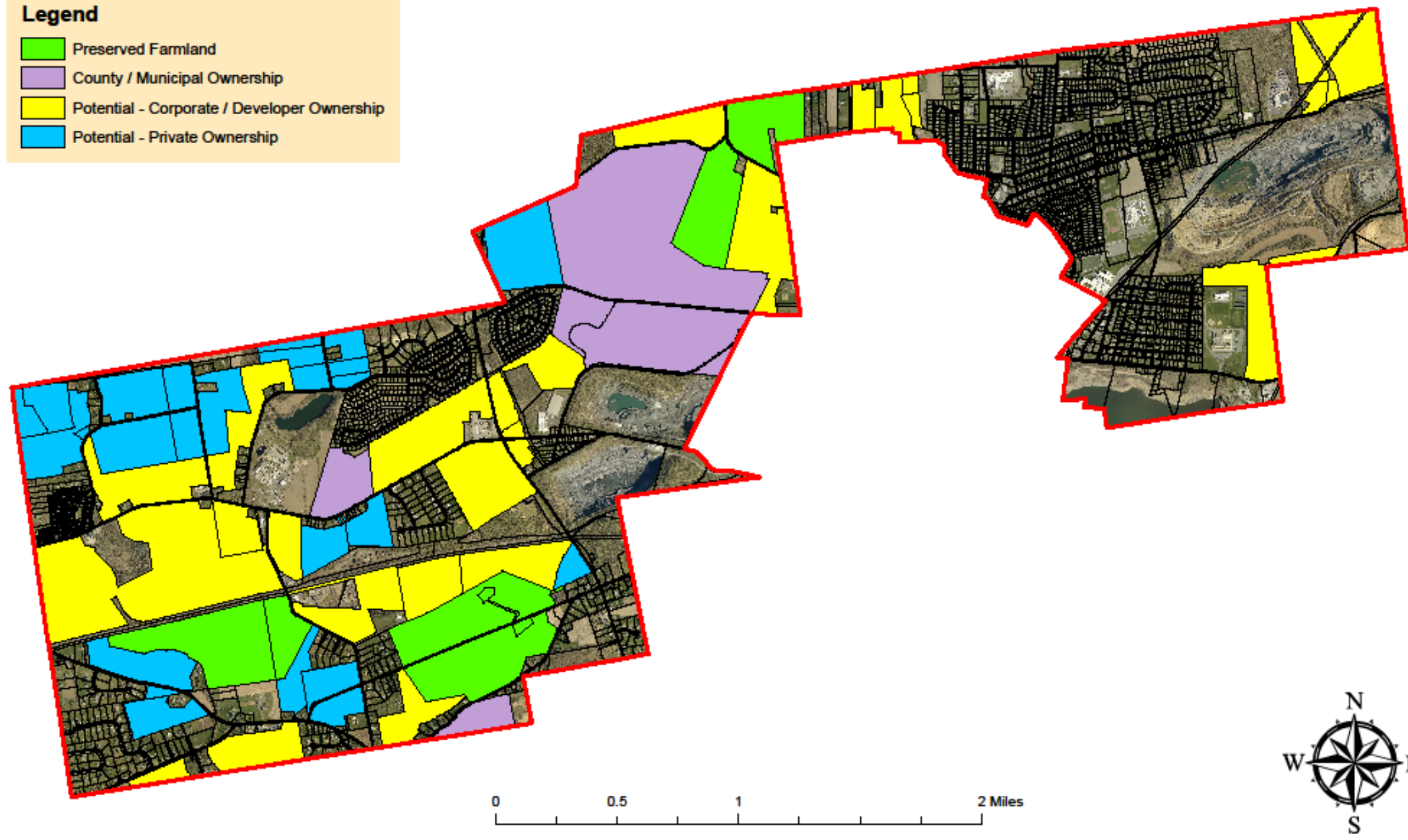
Farmland Preservation Municipal Partnership Program - Numbers to date

2011-2019

	Moore	Plainfield	Lower Mt. Bethel	Upper Mt. Bethel	Totals
Committed Funds	\$2,050,000	\$1,440,000	\$600,000	\$600,000	\$4,690,000
Matched Funds	\$781,500	\$540,800	\$258,000	\$312,000	\$1,892,300
Township Spent to date	\$1,468,470	\$576,674	\$336,995	\$400,000	\$2,782,139
Total Acres	558.22	354.71	118.96	234.64	1,266.53



Legend

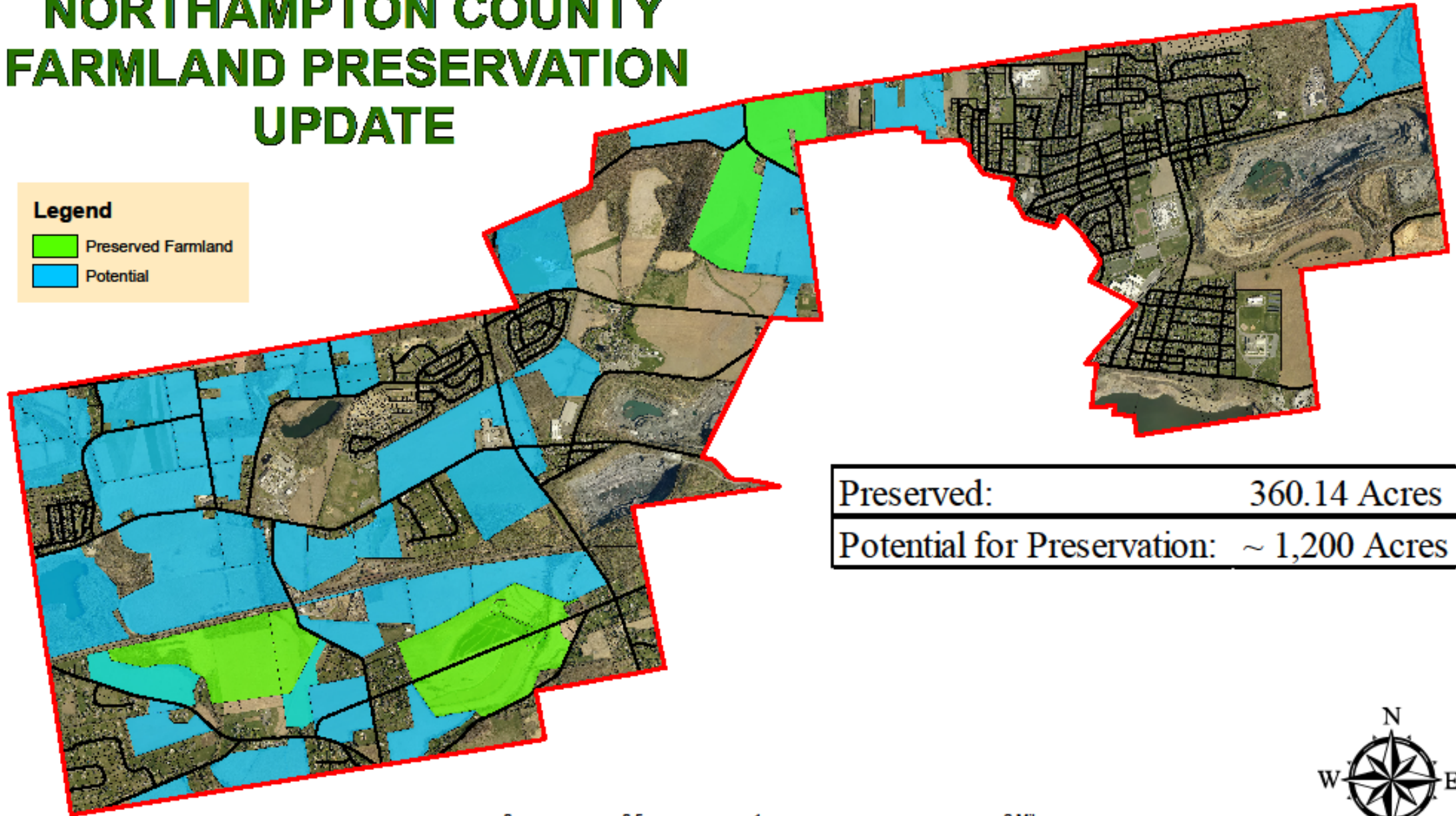
- Preserved Farmland
- County / Municipal Ownership
- Potential - Corporate / Developer Ownership
- Potential - Private Ownership



NORTHAMPTON COUNTY FARMLAND PRESERVATION UPDATE

Legend

-  Preserved Farmland
-  Potential



Preserved:	360.14 Acres
Potential for Preservation:	~ 1,200 Acres



Which would you rather have as a neighbor?

A beautiful expanse
of open farmland and
or open space...



OR...



- More houses
- More buildings
- More cars
- More traffic...



It's your choice!

Thank You

Maria Bentzoni, Farmland Preservation Administrator

610-829-6287

mbentzoni@northamptoncounty.org