



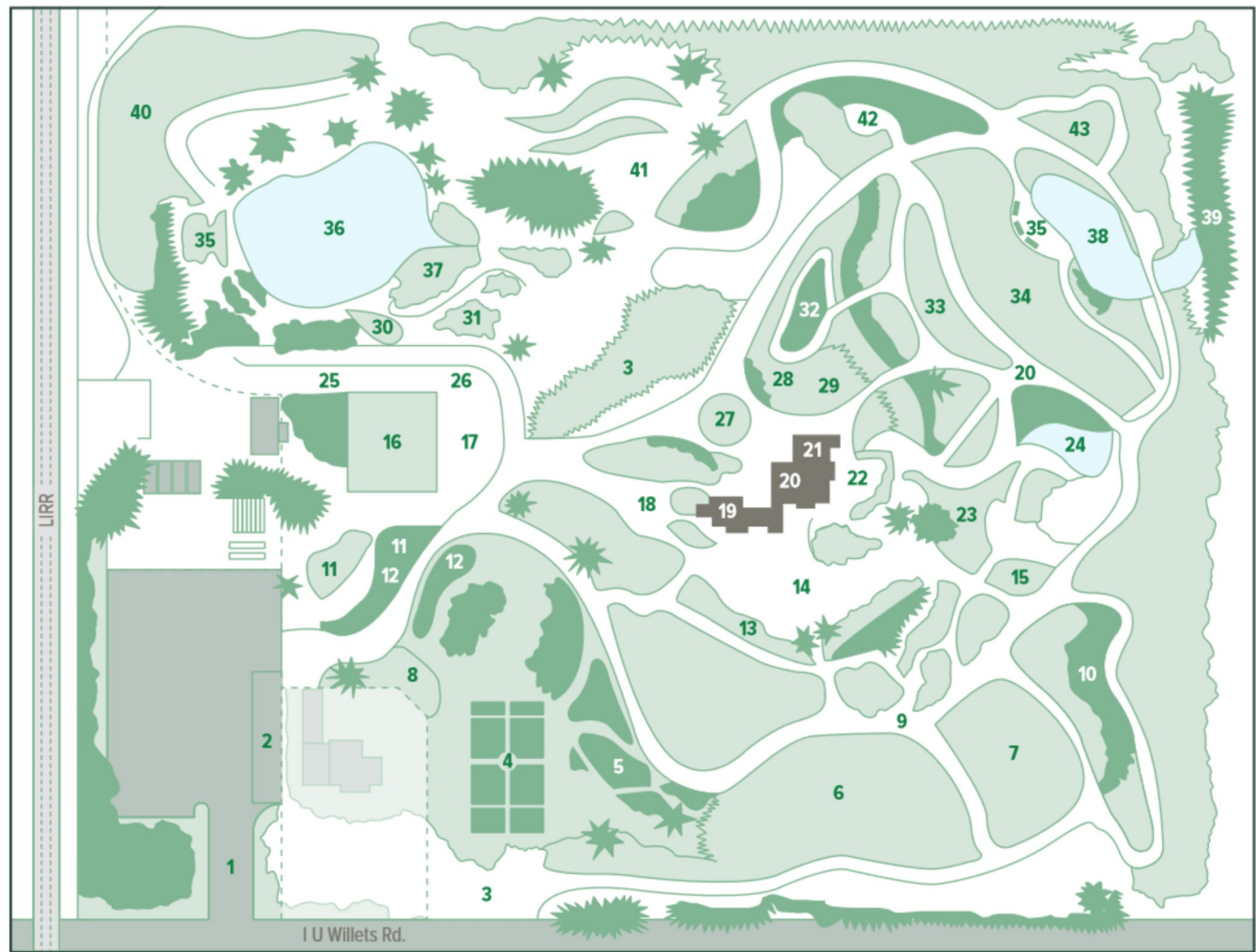
# WELCOME

## to Clark Botanic Garden

Founded in 1969, Clark Botanic Garden (CBG) is a 12-acre living museum and educational facility dedicated to understanding and appreciating the world's plant life through horticulture, education and research.

Among the numerous plant collections at CBG are native spring wildflowers, wetland, rock and rain garden plantings, hydrangeas, pines and conifers, bearded irises, lilacs, hollies, hostas, daylily and dahlia display gardens, a tropical garden, butterfly plants, sensory herb garden, medicinal plants, rain garden plants and over a dozen collections of particular plant families.

CBG was a recent award-winner in the All-America Selections (AAS) 2018 Landscape Design Challenge and is also listed as an official Daylily Garden by the American Hemerocallis Society.



## Points of Interest

- |                             |  |                                    |                       |
|-----------------------------|--|------------------------------------|-----------------------|
| 1. Front Gate               | 13. Rhododendrons                                  | 24. Middle Pond                    | 35. Seating Area      |
| 2. Handicap Parking         | 14. Perennial Garden                               | 25. Butterfly Garden               | 36. Upper Pond        |
| 3. Conifers                 | 15. Evergreen Azaleas                              | 26. Sensory/Herb Garden            | 37. Rock Garden       |
| 4. Formal Rose Garden       | 16. Clark Community Garden                         | 27. Magnolia Circle                | 38. Lower Pond        |
| 5. Bearded Iris Display     | 17. Maze   | 28. Ground Cover Display           | 39. Bog Garden        |
| 6. Beeches                  | 18. LI Gold Medal Garden,<br>Patio and Rain Garden | 29. Picnic Tables                  | 40. Viburnum Garden   |
| 7. Apiary                   | 19. Shop in the Garden                             | 30. Dwarf Conifer Garden           | 41. Daylily Display   |
| 8. Lilacs                   | 20. Clark House                                    | 31. Franklinia                     | 42. Meditation Garden |
| 9. Native Garden and Gazebo | 21. Restrooms                                      | 32. Azaleas and<br>Japanese Maples | 43. Ferns             |
| 10. Holly Collection        | 22. Camellia Garden                                |                                    |                       |
| 11. Peonies/Tree Peonies    | 23. Tropical Garden                                |                                    |                       |
| 12. Seasonal Display Beds   |  |                                    |                       |
|                             |  | 33. Azalea Hill                    |                       |
|                             |  | 34. Rhody Hill                     |                       |