

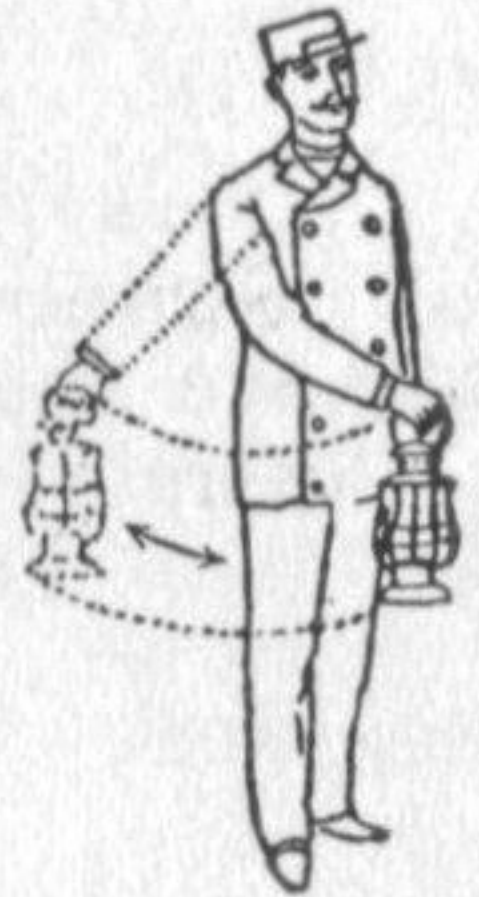
13. HAND, FLAG AND LAMP SIGNALS.

MANNER OF USING—

INDICATION—

(a) Swung across the track.

} Stop.



(b) Raised and lowered vertically.

} Proceed.



(c) Swung vertically in a circle at half arm's length across the track, when the train is standing.

} Back.



(d) Swung vertically in a circle at arm's length across the track, when train is running.

} Train has parted

