



NINETY NORTH MAIN

Tooele City

Volume XI, Issue Twelve

December 2010



Mayor Patrick Dunlavy

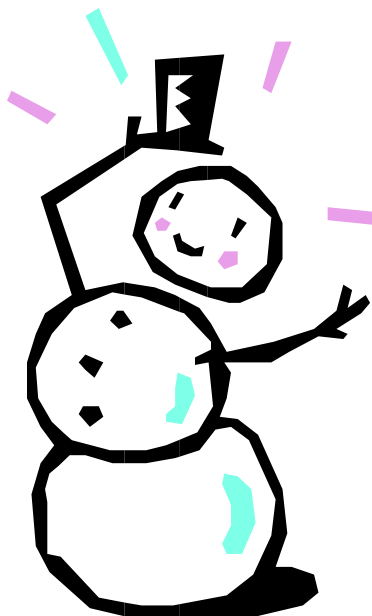
FROM THE MAYOR

know of neighbors or the elderly that could use a hand, please offer yours this year. It will make the season very special for you and your family. We live in a special city

and valley, one that has always stepped up to help others in need. We at city hall, along with employees and the City Council, express our appreciation for the privilege of working in positions that provide service to each of you. We strive to do it better every day. I'm so grateful to them and to you. So set a goal to help, to smile about something every day, and to share your talents and yourself with others.

I wish you and your friends and families a sincere "MERRY CHRISTMAS!"

You can contact me at (435) 843-2104 or patrickd@tooelecity.org.



The Holidays are here, seems like this year went by very quickly. I want to wish all of you a very happy holiday. I hope it finds you and your families well.

As we know there are many among us that are struggling. I ask us all to remember them at this important time of year. Please give if you can, there is such a big need. The food bank can always use donations, as well as other very worthwhile charitable organizations and causes. If you

WHERE ARE YOU DUMPING THAT GREASE?

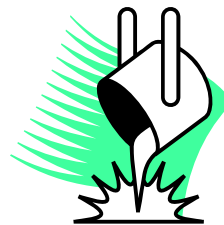
One of the major causes of sewage back ups is animal and vegetable fats that get dumped down sink drains. After a short trip through the sewer line, the fats and other grease congeal, therefore blocking the passage of household waste. Sometimes that blockage is in the home's

service line. Often the blockage is in the main line causing the sewage to back up in several homes or businesses.

With the holidays approaching and the cooking of turkeys, especially in the deep fryers that are so prevalent today, please do not drain fats down kitchen sinks. Allow any fats to

congeal and dispose of them with your normal trash pick up. Do not dump or pour any grease or fats into sink drains.

The home you keep from becoming contaminated may be yours!



December Calendar

- Dec. 1 City Council 7:30 pm
- Dec. 4 Chamber of Commerce Christmas Parade/ Meet Santa at City Hall after the parade
- Dec. 7 PG movie at city library at 4:30 pm
- Dec. 8 Planning Commission Mtg. 7 pm
- Dec. 9 Photo Project Class 2-8 pm at Arts & Craft Center
- Dec. 9 Snowman story time at city library at 4:30 pm
- Dec. 14 PG movie at city library at 4:30 pm
- Dec. 15 Special "Santa" story time at city library at 11 am
- Dec. 15 City Council 7:30 pm
- Dec. 16 Jon Schmidt Christmas Concert 7 pm at THS auditorium. Cost is 1 can of food per ticket. Tickets at Tooele City Hall or Stowe Family Music
- Dec. 21 Santa's Workshop for Kids, 10 am to 2 pm, at Dow James Building
- Dec. 21 PG movie at city library at 1 pm
- Dec. 22 PG animated movie at city library at 1 pm
- Dec. 22 Planning Commission Mtg. 7 pm
- Dec. 23 Classic Christmas movie, rated G, at city library at 1 pm
- Dec. 24 City offices closed
- Dec. 28 PG movie at city library at 1 pm
- Dec. 30 Animated movie, rated G, at city library at 1 pm
- Dec. 31 City offices closed
- Dec. 31 New Years Noon party at city library at 11:30 am.



Santa's Workshop

Date: Tuesday, December 21, 2010

Time: 10 a.m. — 2 p.m.

Place: Dow James Building (438 W. 400 N., Tooele)

Who: Kids of All Ages!!!

(Children under 6 must be accompanied by an adult, but all parents are welcome)

Multiple fun craft projects to choose from!

Prices range from FREE to \$4!

Space for projects are limited—register soon at City Hall (90 N. Main St)!

For a full class listing and registration forms please visit our website at www.tooelecity.org. If you have any questions please contact the Tooele City Arts Council at (435) 843-2142 or terras@tooelecity.org.



Tooele City Library Events

Movies @ Your Tooele City Library:

Dec. 7 at 4:30 pm, rated PG

Dec. 14 at 4:30 pm, rated PG

Dec. 21 at 1 pm, rated PG

Dec. 28 at 1 pm, rated PG

Sign up at the front desk a half hour before movie begins.

Space limited. Arrive early!

Children's Story Time: Wednesdays at 11 am. Special "Santa" story time on December 15th.

Children's Crafts: Every Friday between 3:30 and 5:30 pm.

Writing Fun: Available at any time.



Check out Movies @ Your Library

Time.

Winter Break Movies:

Dec. 22 at 1 pm, an animated film, rated PG

Dec. 23 at 1 pm, a "classic" Christ-

mas film, rated G.
Dec. 24 at 1 pm, an underwater animated film, rated G

Dec. 30 at 1 pm, an animated film, rated G
Discover Fun: Available at any time. Children of all ages can follow a treasure hunt at the library to receive a fun prize.

Thing-a-ma-jig Thursday at 11 am and 4:30 pm: December 9th Snowman Story

mas film, rated G.

Dec. 24 at 1 pm, an underwater animated film, rated G

Dec. 30 at 1 pm, an animated film, rated G

New Years Noon Party: Thursday, December 31 at 11:30 till noon!

Holiday Closures: Dec. 25 (Christmas Day) and Jan. 1 (New Years Day)



Tooele City Library
<http://tooelecity.org/tcl/library.html>
128 West Vine Street, (435) 882-2182

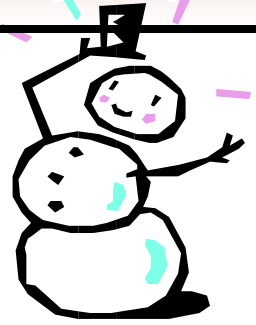


Photo Project Class

Thursday, December 9, 2010

2-8 p.m.

Tooele Army Depot



Please pre-register by Monday, December 6, 2010 at Tooele City Hall. To view a full class listing with details please visit our website at www.tooelecity.org. For more information please contact the Tooele City Arts Council at (435)843-2142 or terras@tooelecity.org.



There will be no garbage or bulk waste pickup on Christmas or New Year's Day. If your regularly scheduled garbage pickup day falls on either Christmas or New Year's Day, it will be picked up the following day instead. If you have any questions, please call Tooele City 843-2150, or Ace Disposal 882-7009.

\$250.00 REWARD!!!!

FOR THE INFORMATION LEADING TO THE ARREST OF ANY PERSON RESPONSIBLE FOR ANY GRAFFITI IN TOOELE CITY.

CONTACT TOOELE CITY POLICE
882-8900 OR

TOOELE CITY PARKS 843-2140
ALL INFORMATION CONFIDENTIAL

Anyone offering a service from their home, for compensation, must have a Tooele City Business License!

All door-to-door salesmen must be licensed with Tooele City and wear a green Tooele City ID Badge.

Contractors need to be licensed with Tooele City, even if licensed with the State.

For more information, contact the Tooele City Recorder's Office at (435) 843-2110.

HELP BY REPORTING SUSPICIOUS JUVENILES

Tooele City Police would like every citizen's help with the graffiti problem. A lot of the graffiti is being done by juveniles. We would like to encourage anyone that observes juveniles wandering around their neighborhood past curfew*, to call and let police know of the juvenile's location and description. Not all of the graffiti occurs at night so we would also encourage citizens to call if they observe students that are truant from school. Don't be afraid to call and report any suspicious people or incidents. Hopefully, if we work together we can make a difference! Call 882-8900 if during business hours, or 882-5600 after hours. Of course, in an emergency call 911.

*Curfew: Age: under 14, winter 10 pm—5 am, summer 11 pm—5 am. Age: 14-18, winter Midnight—5 am, Summer 1 am—5 am



Don't park on city streets between the hours of 2 am to 6 am during the winter months so that the city snowplows can clear off your street. You could be ticketed.

Tooele City

90 N. Main St.
Tooele, Utah 84074

Phone: 435-843-2100
Fax: 435-843-2109

E-mail: michellep@tooelecity.org



"The Greatest City in Utah!"
—Mayor Patrick Dunlavy



If you are interested in performing for Fridays on Vine, please submit a 2-3 minute DVD demo to the Tooele City Arts Council by January 31, 2011. The DVD demo should include a short introduction of yourself or your group and a demonstration of your performance.

Bring your DVD's in, or mail to:
Tooele City Hall
Attention: Michelle
90 North Main St.
Tooele, Utah 84074

Questions? Call Michelle at (435) 843-2104 or email michellep@tooelecity.org



2010 Fridays on Vine

The Tooele City Arts Council
Holiday Concert
Featuring
Jon Schmidt



Thursday,
December 16, 2010
7:00 p.m.
Tooele High School
Auditorium

Cost is One Can of Food

Tickets will be for general admission.
Doors will open at 6:00 p.m..

*Exchange your cans of food for tickets at Tooele City Hall
(90 North Main Street) or
Stowe Family Music (40 North Main Street)*



You won't want to miss this family friendly concert. Audiences worldwide are taking notice of Jon Schmidt. His fan base defies demographics as his music touches people of all ages and cultures. Often labeled "New Age" Jon has created a hybrid of music that is equal parts classical, contemporary and rock and roll. It redefines the New Age genre. For more information please contact the Tooele City Arts Council at 843-2142 or visit www.jonschmidt.com.

Tooele Animal Shelter



The Tooele Animal Shelter, located at 3312 North 1200 West, will be open Monday through Friday, 9 am to 5 pm. The shelter

will be closed Saturdays, Sundays and holidays.

Since the animal shelter is closed on Saturdays, Sundays and holidays, there will be no animal trap services provided on those days. Please do not set animal traps on Friday or Saturday nights or the night before a holiday. Animal Control will not be available to pick up the animals and the animal shelter is closed.



If you have any questions or need information on obtaining an animal trap, please contact the animal shelter at 882-4607.

Business License Renewals

Business License Renewals should be arriving just after December 1, 2010. You can drop your payment off in the Finance Department OR in their drop box to the south of City Hall. You can also now pay your renewal ONLINE by going to www.xpressbillpay.com. If you have problems or questions, please contact Xpress Bill Pay directly at (800) 766-2350 Monday-Friday 8 am to 5 pm.