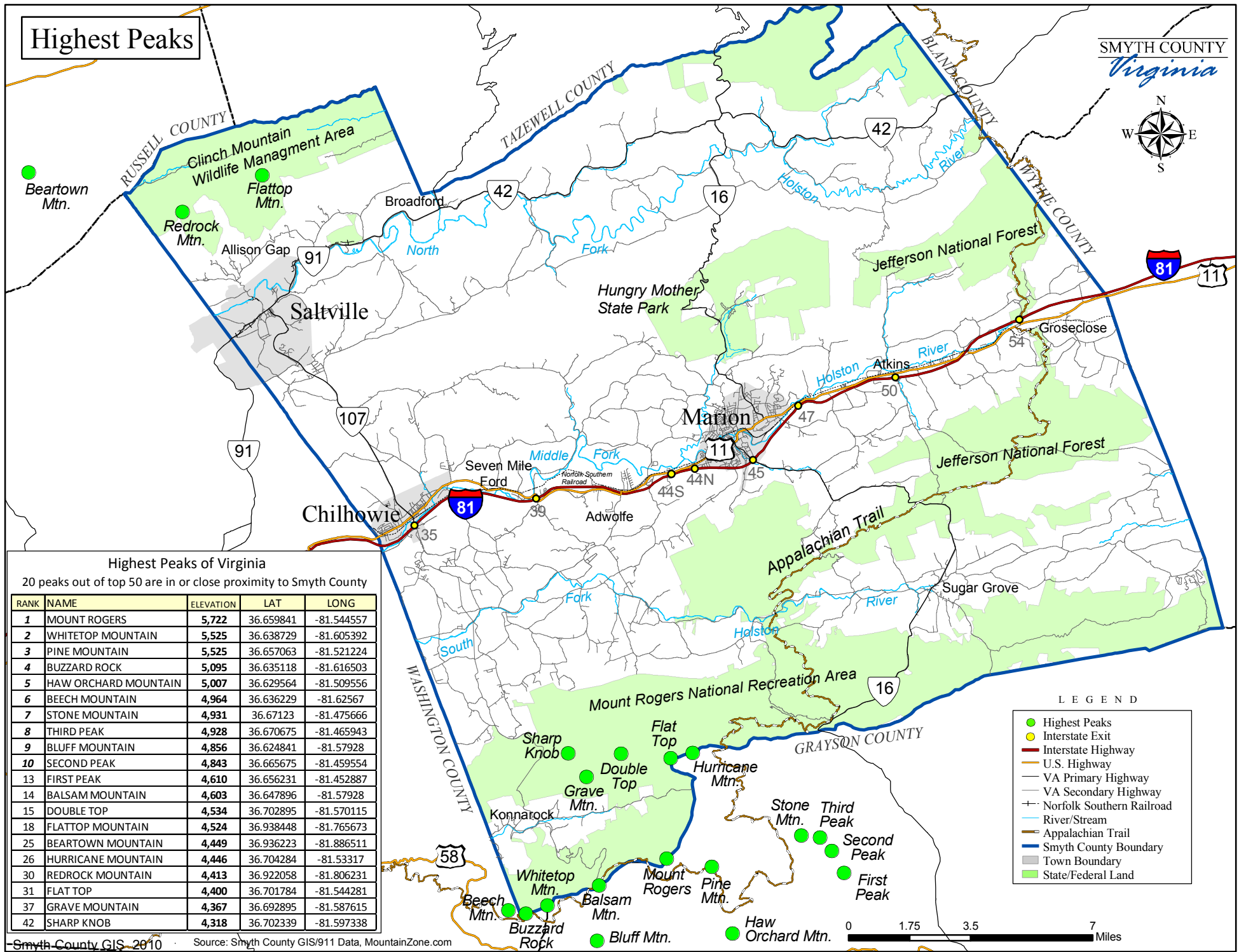


Highest Peaks

SMYTH COUNTY
Virginia



Highest Peaks of Virginia

20 peaks out of top 50 are in or close proximity to Smyth County

RANK	NAME	ELEVATION	LAT	LONG
1	MOUNT ROGERS	5,722	36.659841	-81.544557
2	WHITETOP MOUNTAIN	5,525	36.638729	-81.605392
3	PINE MOUNTAIN	5,525	36.657063	-81.521224
4	BUZZARD ROCK	5,095	36.635118	-81.616503
5	HAW ORCHARD MOUNTAIN	5,007	36.629564	-81.509556
6	BEECH MOUNTAIN	4,964	36.636229	-81.62567
7	STONE MOUNTAIN	4,931	36.67123	-81.475666
8	THIRD PEAK	4,928	36.670675	-81.465943
9	BLUFF MOUNTAIN	4,856	36.624841	-81.57928
10	SECOND PEAK	4,843	36.665675	-81.459554
13	FIRST PEAK	4,610	36.656231	-81.452887
14	BALSAM MOUNTAIN	4,603	36.647896	-81.57928
15	DOUBLE TOP	4,534	36.702895	-81.570115
18	FLATTOP MOUNTAIN	4,524	36.938448	-81.765673
25	BEARTOWN MOUNTAIN	4,449	36.936223	-81.886511
26	HURRICANE MOUNTAIN	4,446	36.704284	-81.53317
30	REDROCK MOUNTAIN	4,413	36.922058	-81.806231
31	FLAT TOP	4,400	36.701784	-81.544281
37	GRAVE MOUNTAIN	4,367	36.692895	-81.587615
42	SHARP KNOB	4,318	36.702339	-81.597338

LEGEND

- Highest Peaks
- Interstate Exit
- Interstate Highway
- U.S. Highway
- VA Primary Highway
- VA Secondary Highway
- Norfolk Southern Railroad
- River/Stream
- Appalachian Trail
- Smyth County Boundary
- Town Boundary
- State/Federal Land

