

CORPORATE LIMITS
2012 ANNEXATION

CORPORATE LIMITS

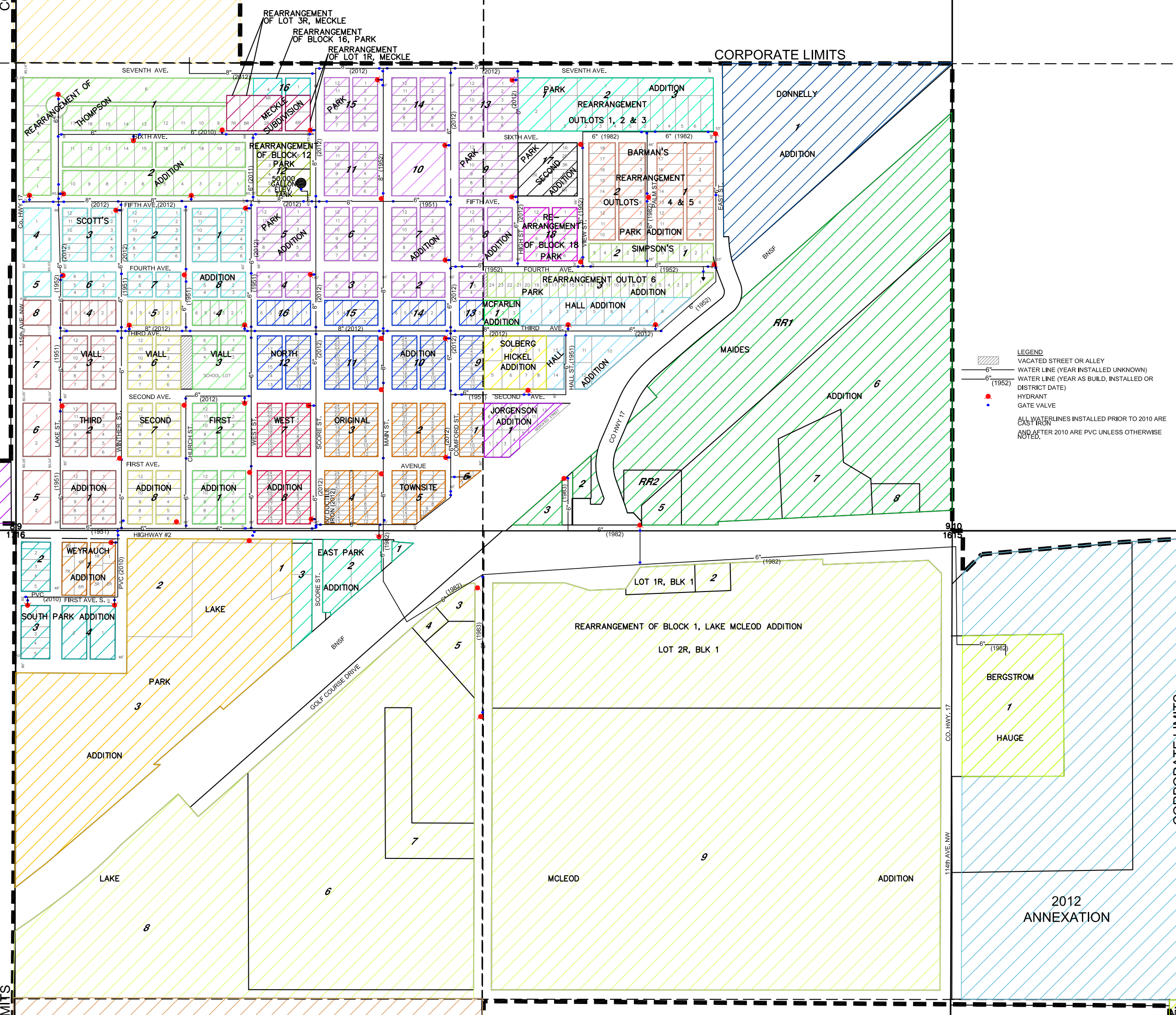
CORPORATE LIMITS

2012 ANNEXATION

2012 ANNEXATION

CORPORATE LIMITS

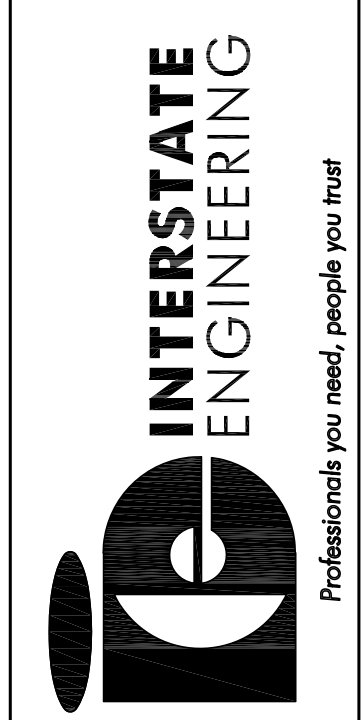
CORPORATE LIMITS



LEGEND

- VACATED STREET OR ALLEY
- WATER LINE (YEAR INSTALLED UNKNOWN)
- WATER LINE (YEAR AS BUILT, INSTALLED OR SERVICE DATE)
- HYDRANT
- GATE VALVE
- ALL WATERLINES INSTALLED PRIOR TO 2010 ARE CAST IRON
- ALL WATERLINES INSTALLED AFTER 2010 ARE PVC UNLESS OTHERWISE NOTED

1
SHEET NO.



Interstate Engineering, Inc.
P.O. Box 2236
202 13th Street West
Williston, ND 58801
Ph (701) 774-3637
Fax (701) 774-3638
www.interstateeng.com
Other offices in Minnesota, Montana and South Dakota

RAY, NORTH DAKOTA
SECTIONS 8, 9, 15 & 16, T-156N, R97W
CITY MAP
Drawn By: V.M.M. Project No.: S13-03-080
Checked By: L.J.F. Date: FEBRUARY 5, 2013

Revision No.	Date	By	Description