





LEGEND

POINTS OF INTEREST

-  ACCESS POINT
-  RESTROOM
-  CANOE LAUNCH
-  FOOTBRIDGE
-  VIETNAM MEMORIAL
-  OUTLOOK
-  PAVILION
-  SPRAY PARK
-  AMPHITHEATER

-  INTERPRETIVE SIGN

TRAILS

-  GKB RIVERWALK TRAIL
-  ACCESS ADVENTURE TRAIL
-  GKB RIVERWALK ACCESS TRAIL
-  FOOTPATH

GROUND COVER

-  WETLAND
-  TREE COVER
-  GRASS COVER

GKB Riverwalk Trail

TRAILHEAD LOCATIONS:

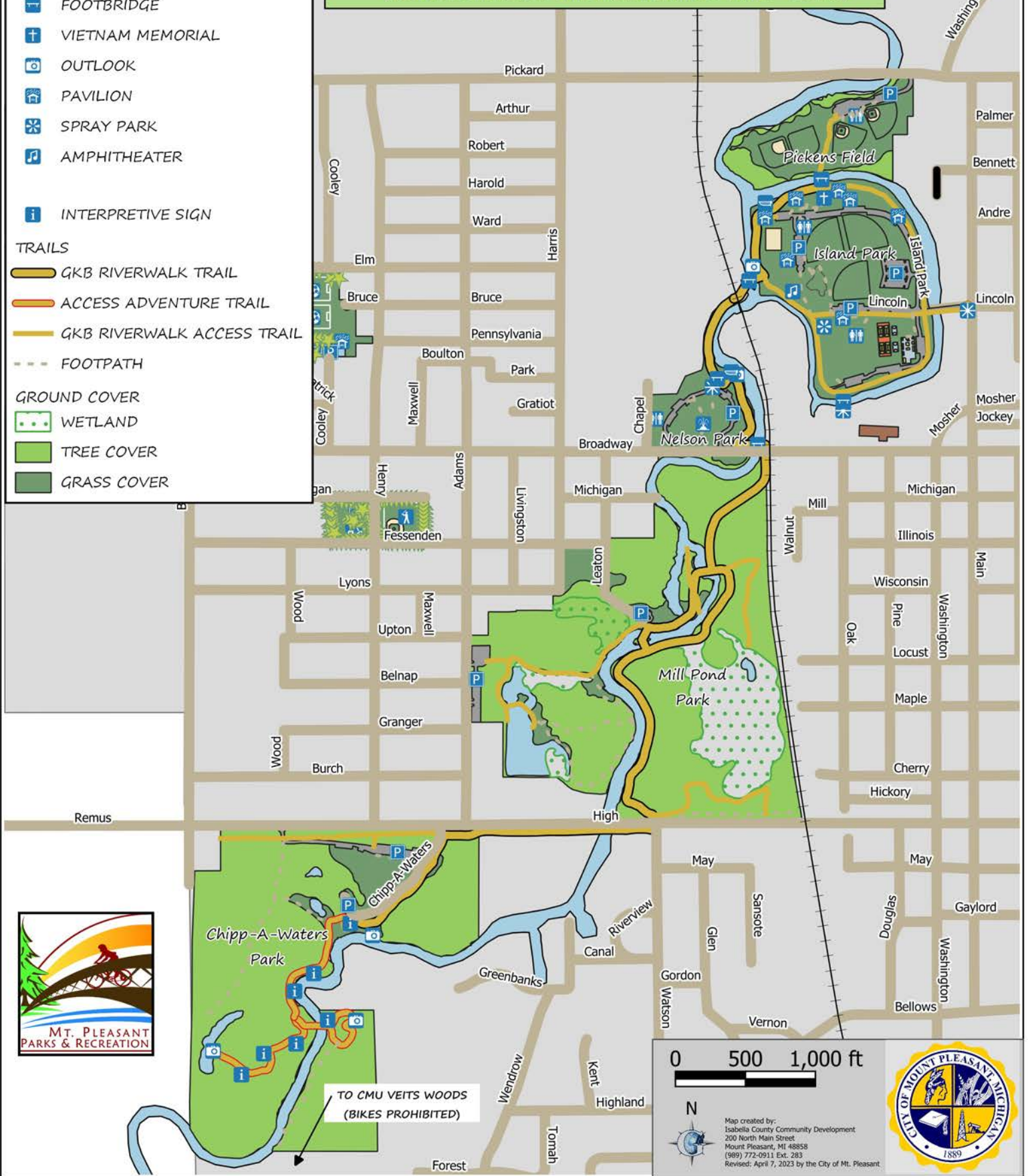
PICKENS FIELD

309 W. PICKARD
MT. PLEASANT, MI 48858

CHIPP-A-WATERS PARK

1403 W. HIGH STREET
MT. PLEASANT, MI 48858

(TOTAL DISTANCE OF THE GKB RIVERWALK TRAIL - 1.8 MI.)



TO CMU VEITS WOODS
(BIKES PROHIBITED)

0 500 1,000 ft



Map created by:
Isabella County Community Development
200 North Main Street
Mount Pleasant, MI 48858
(989) 772-0911 Ext. 283
Revised: April 7, 2023 by the City of Mt. Pleasant

