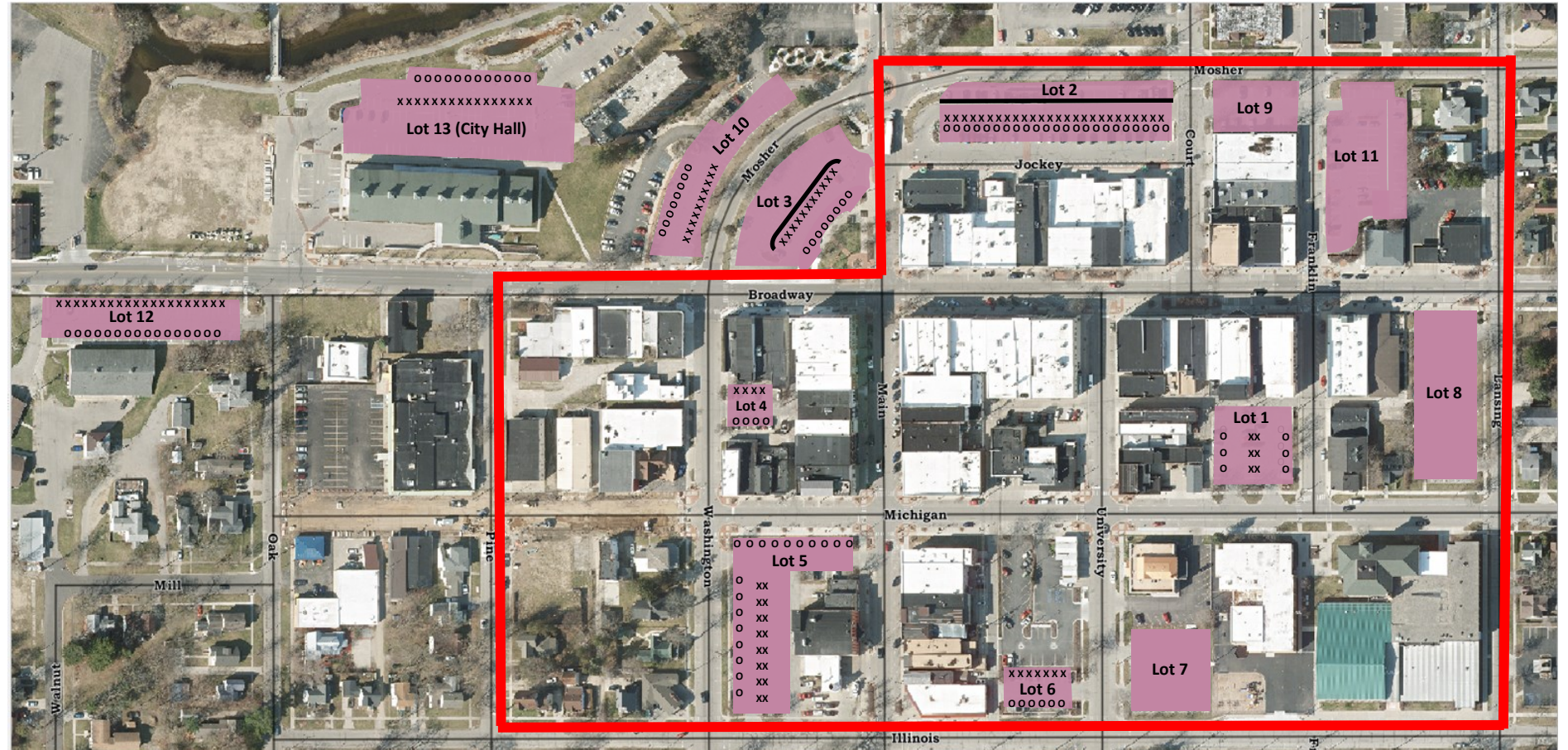


# Downtown Mt. Pleasant Parking

- There is no overnight on-street parking in the downtown area as depicted in the red box below between the hours of 4:00-6:00am.
- Overnight street parking is allowed throughout the rest of the City of Mt. Pleasant year-round. In these areas, when a snow emergency is declared, all cars must be removed from the street.

PARKING LOT DESIGNATIONS	
Lot 1	All-Day/Evening & Overnight*
Lot 2	All-Day/Evening & Overnight*
Lot 3	All-Day/Evening & Overnight*
Lot 4	All-Day/Evening & Overnight*
Lot 5	All-Day/Evening & Overnight*
Lot 6	All-Day/Evening & Overnight*
Lot 7	All-Day/Evening
Lot 8	All-Day/Evening
Lot 9	All-Day/Evening
Lot 10	All-Day/Evening & Overnight*
Lot 11	All-Day/Evening
Lot 12	All-Day/Evening & Overnight*
Lot 13	All-Day/Evening & Overnight*



Questions on Parking?  
Call 989-779-5347 for assistance.



**OVERNIGHT PARKING ON EVEN DAYS**  
XXXXXXXXXXXXXXXXXXXXXXXXXXXX

**OVERNIGHT PARKING ON ODD DAYS**  
OOOOOOOOOOOOOOOOOOOOOOOO

\* Lots 1, 2, 4, 5, 6, 10, 12 & 13 have designated areas for parking on odd and even days. Between 4:00 a.m. and 6:00 a.m., overnight permit holders must park in areas designated “even” on even days of the month (2<sup>nd</sup>, 4<sup>th</sup>, etc.). On odd days (1<sup>st</sup>, 3<sup>rd</sup>, etc.), vehicles must be parked in areas designated “odd”. The even or odd day is determined between the hours of 4:00 a.m. and 6:00 a.m. Therefore, permit holders must park on the “odd” side if the date is “odd” during the early morning hours (4:00-6:00 a.m.) of the following day, and on the “even” side if the date is “even” during the early morning hours (4:00 -6:00 a.m.) of the following day.



## DOWNTOWN PARKING INFORMATION

The City of Mt. Pleasant operates 13 municipal parking lots in downtown containing 782 parking spaces. Parking lots are available at no charge all day/evening and in some cases overnight.

On-street parking is always free and is available in both angle and parallel options throughout downtown.

### ADA PARKING

Throughout the downtown you will find designated ADA spaces in parking lots and on-street for use by anyone with a valid ADA placard. On-street ADA spaces include the following locations:

- NW corner of Broadway and University
- NE corner of Main and Illinois

Use of ADA spaces are limited to vehicles that have handicap plates or temporary State of Michigan Handicap Parking Permit hang tags. Any vehicle without the appropriate handicap permit may be ticketed and towed.

For further information, please call  
City of Mt. Pleasant.  
(989) 779-5347

## OVERNIGHT PARKING

Overnight parking is allowed in municipal parking lots with a valid overnight parking permit and only in designated areas.

Live downtown and need a place to park overnight? Downtown has eight overnight parking lot options for you to choose from. Overnight permits are \$25 for six months and expire on June 30 and December 31 of each year.

Please note there is **NO parking allowed on downtown streets between 4:00 a.m. and 6:00 a.m.**

Lots 1, 2, 4, 5, 6, 10, 12 and 13 have designated overnight areas for parking on odd and even nights. Overnight permit holders must park in areas designated “even” on even days of the month (2nd, 4th, etc.). On odd days (1st, 3rd, etc.), vehicles must be parked in areas designated “odd.” The even or odd day is determined between the hours of 4:00 a.m. and 6:00 a.m.

Therefore, permit holders must park on the “odd” side if the date is “odd” during the early morning hours of the following day, and on the “even” side if the date is “even” during the early morning hours of the following day.

### PURCHASING PERMITS

To purchase permits visit us online at [www.mt-pleasant.org/downtownparking](http://www.mt-pleasant.org/downtownparking) or visit us at city hall.

## ELECTRIC CAR-CHARGING STATION

A ChargePoint charging station is located in parking lot #2 (also known as Jockey Alley), located on Mosher Street between Main and Court Street. There is no charge for use of the ChargePoint station.



### GUEST PARKING

Guests of downtown residents are required to obtain an overnight guest parking permit to avoid ticketing. Guest parking passes are FREE and are limited to seven days. Guests should follow the “even/odd” parking rules as detailed below under the section “Overnight Parking.”

Please note in the downtown area any vehicle not parked in

1. a lot designated for overnight parking, and
2. in the proper even or odd area, and
3. with a current permit properly displayed

may be subject to ticketing and/or towing.



# Essential Information About Downtown Parking

A guide to parking in downtown Mt. Pleasant

To purchase permits visit us online at [www.mt-pleasant.org/downtownparking](http://www.mt-pleasant.org/downtownparking) or visit us at city hall.

*Mt. Pleasant*  
[meet here]

City of Mt. Pleasant  
320 West Broadway  
Mt. Pleasant, MI 48858  
(989) 779-5347