

Available Commercial & Industrial Sites in Montrose, Minnesota

Legend

- Available Commercial & Industrial Sites
- Montrose City Limits

#1: PID: 112-500-344-403 & 112-500-344-400. Highway 12 and Clementa. 29.31 acre commercial/industrial subdivision.

#2: PID: 112-012-006-210. 381 Nelson Boulevard. Former Lumberyard. .89 acre site commercial site.

#3: PID: 112-500-011-200, 112-500-012-300 and 112-500-012-201. Highway 12 and Highway 25. Tering Site. 35.67 acre site.

#4: PID: 112-028-001-020. Highway 12 and Zephyr Avenue. Montrose Retail. 3.56 acre Highway Commercial.

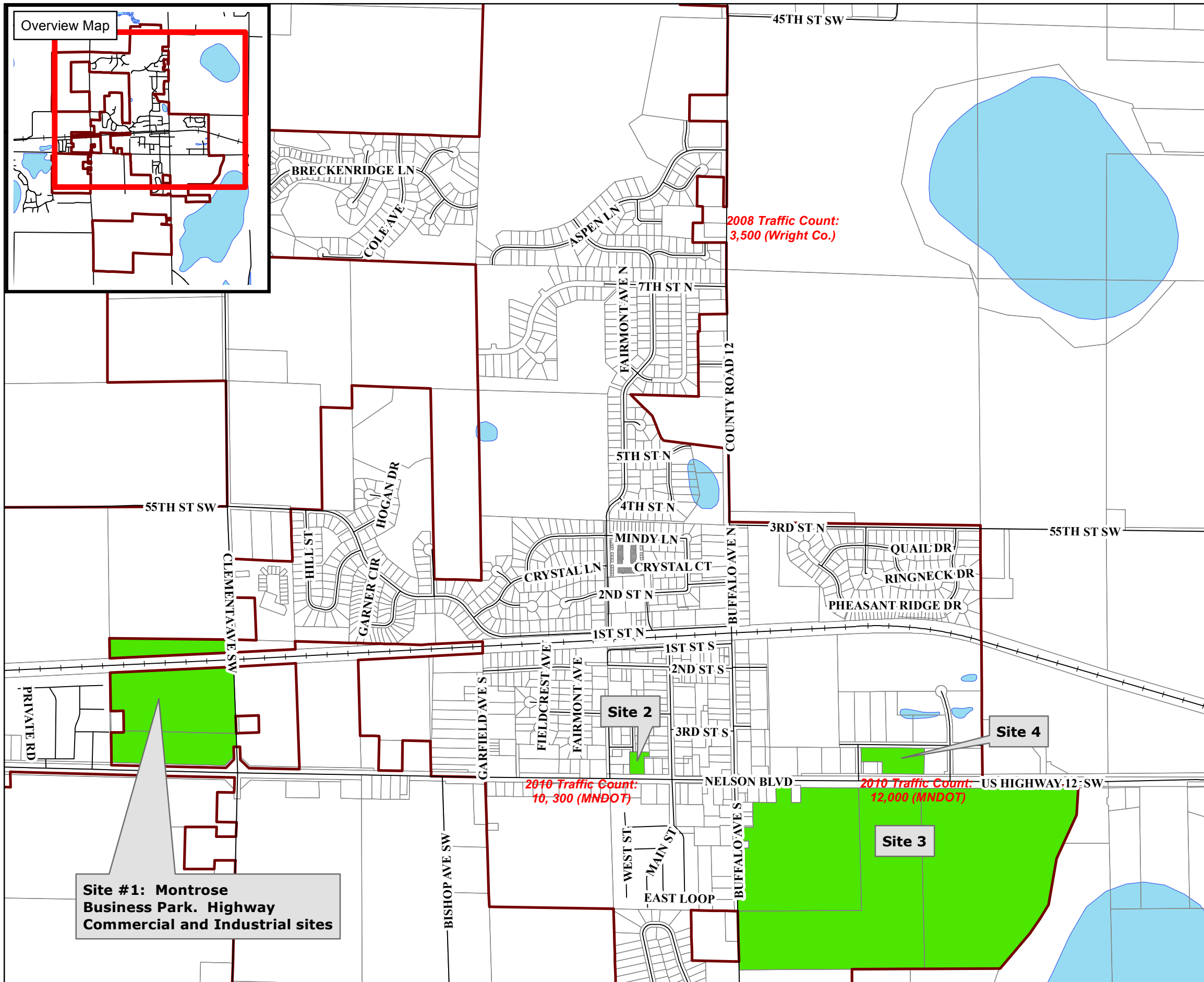
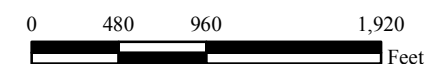


For more information, please see the Individual site information sheets or contact:

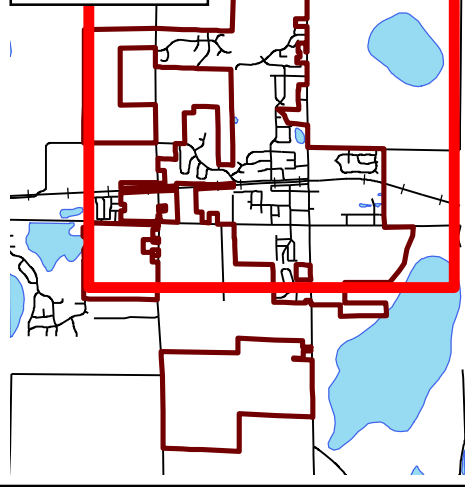
City of Montrose
 PO Box 25
 311 Buffalo Avenue South
 Montrose MN 55363
 Phone: 763-675-3717
 Fax: 763-675-3032
<http://www.montrose-mn.com/>

or EDA Consultant:
 Joanne Foust at MDG, Inc. at: 952-758-7399
 Or: foustmdg@gmail.com

Map Date: September 23, 2015



Overview Map



Site #1: Montrose Business Park. Highway Commercial and Industrial sites

Site 2

Site 4

Site 3

PRIVATE RD

55TH ST SW

CLEMENTA AVE SW

BRECKENRIDGE LN

COLE AVE

ASPEN LN

FAIRMONT AVE N

7TH ST N

5TH ST N

4TH ST N

MINDY LN

CRYSTAL LN

CRYSTAL CT

2ND ST N

1ST ST N

1ST ST S

2ND ST S

3RD ST S

WEST ST

MAIN ST

EAST LOOP

BUFFALO AVE N

BUFFALO AVE S

NELSON BLVD

BUFFALO AVE S

45TH ST SW

COUNTY ROAD 12

3RD ST N

55TH ST SW

QUAIL DR

RINGNECK DR

PHEASANT RIDGE DR

US HIGHWAY 12 SW

BISHOP AVE SW

GARFIELD AVE S

FIELDCREST AVE

FAIRMONT AVE

WEST ST

MAIN ST

BUFFALO AVE S