

RESOLUTION NO. R-2023-21

**RESOLUTION AUTHORIZING A WAIVER OF THE COMPETITIVE BID PROCESS
FOR THE PURCHASE OF ONE (1) NEW VACTOR COMBINATION SEWER CLEANER TRUCK WITH AN
INTERNATIONAL CHASSIS, AND APPROVING AND AUTHORIZING THE EXECUTION OF A PURCHASE
LEASE AGREEMENT WITH TAX-EXEMPT LEASING CORP. IN THE AMOUNT OF \$568,940.00 FOR THE
PURCHASE, CONSTRUCTION AND DELIVERY OF THE VACTOR COMBINATION SEWER CLEANER TRUCK**

WHEREAS, the President and Board of Trustees of the Village of Maywood (the "Village Board") desire to approve and execute a Purchase Lease Agreement with Tax-Exempt Leasing Corp. ("Lessor") for the purchase, construction and delivery of one (1) new Vactor Combination Sewer Cleaner Truck with an International Chassis (the "Vactor Truck") for use by the Maywood Water Department / Public Works Department at a purchase price of \$568,940.00 with repayment terms of seven (7) years at 6.15% interest (the "Purchase Lease Agreement"). A copy of the Purchase Lease Agreement is attached hereto as Exhibit "A" and made a part hereof; and

WHEREAS, pursuant to Section 36.08 ("Contracts and Purchases") of the Village of Maywood Municipal Code ("Village Code"), all purchase orders or contracts for supplies, materials, equipment or contractual services involving the expenditure of more than Ten Thousand Dollars (\$10,000.00) shall be let to the lowest responsible bidder after advertisement for bids, unless competitive bidding is waived by a vote of two-thirds (2/3rds) of the corporate authorities; and

WHEREAS, the Village Board finds that it is desirable and in the best interests of the Village and its residents, business owners, property owners and the public to waive the competitive bidding process for the purpose of purchasing the Truck from Lessor for the following reasons:

Per Section 36.08(A)(6)(e) of the Village Code:

1. The ability, capacity and skill of the bidder to perform the contract to provide the service required;
2. Whether the bidder can perform the contract or provide the service promptly, or within the time specified, without delay or interference;
3. The character, integrity, reputation, judgment, experience and efficiency of the bidder;
4. The quality of performance of previous contracts or services;
- ***
7. The sufficiency of the financial resources and ability of the bidder to perform the contract or provide the service;
8. The quality, availability and adaptability of the supplies or contractual services to the particular use required;
9. The ability of the bidder to provide future maintenance and service for the use of the subject of the contract;
10. The number and scope of conditions attached to the bid; and

Per Section 36.08(B) of the Village Code:

1. Availability of only a single source vendor or a limited number of known vendors.

; and

WHEREAS, pursuant to its home rule powers and the intergovernmental cooperation powers set forth at Section 6 (Powers of Home Rule Units) and Section 10(a) (Intergovernmental Cooperation) of Article VII (Local Government) of the 1970 Illinois Constitution and the Illinois Intergovernmental Cooperation Act (5 ILCS 220/) and Sections 8-1-7 and 8-9-2 of the Illinois Municipal Code (65 ILCS 5/8-1-

7; 65 ILCS 5/8-9-2), the Village of Maywood ("Village") is authorized to approve and enter into the Purchase Lease Agreement and the Village Board finds that it is in the best interests of the Village and its residents, business owners, property owners and the public to enter into the Purchase Lease Agreement.

NOW, THEREFORE, BE IT RESOLVED BY THE PRESIDENT AND BOARD OF TRUSTEES OF THE VILLAGE OF MAYWOOD, COOK COUNTY, ILLINOIS, AS FOLLOWS:

Section 1: Incorporation. Each Whereas paragraph above is incorporated by reference into this Section 1 and made a part hereof as material and operative provisions of this Resolution.

Section 2: Bid Waiver and Approval of Documents. The President and Board of Trustees of the Village of Maywood waive competitive bidding in order to purchase the Vactor Truck, as set forth in the attached Purchase Lease Agreement, and approve and authorize the execution of the attached Purchase Lease Agreement (**Exhibit "A"**) with Tax-Exempt Leasing Corp. for the purchase, construction and delivery of the Vactor Truck at a purchase price of \$568,940.00 with repayment terms of seven (7) years at 6.15% interest.

Section 3: Execution of the Agreement and Approval of Financial Obligations and Other Documents. The President and Board of Trustees of the Village authorize and direct the Village President and Village Clerk, or their designees, to execute the final version of the Purchase Lease Agreement, which may contain certain non-substantive and non-financial modifications that are approved by the Village Attorney, and to execute and deliver all other instruments and documents and pay all costs that are necessary to fulfill the Village's obligations under the Purchase Lease Agreement.

SECTION 4: Delivery of Signed Documents. The President and Board of Trustees of the Village direct the Village Clerk's Office, or its designee, to forward a certified copy of this Resolution and a fully executed copy of the Purchase Lease Agreement to the Lessor for record retention purposes.

Section 5: Effective Date. This Resolution shall be effective immediately upon its approval and adoption as provided by applicable State law.

ADOPTED this 18th day of April, 2023, pursuant to a roll call vote as follows:

AYES: Mayor Booker, A. Sanchez, S. Reyes-Plummer, M. Jones, M. Lightford
A. Peppers and I. Brandon

NAYS: _____

ABSENT: _____

APPROVED this 18th day of April, 2023, by the Village President of the Village of Maywood, and attested by the Village Clerk on the same day.

Nathaniel George Booker, Village President

ATTEST:

Gwaine Dianne Williams, Village Clerk

(SEAL)

Exhibit "A"

**PURCHASE LEASE AGREEMENT
FOR ONE (1) NEW VACTOR COMBINATION SEWER CLEANER TRUCK
WITH AN INTERNATIONAL CHASSIS**

(attached)



203 E. PARK AVENUE, LIBERTYVILLE, ILLINOIS 60048



847-247-0771



847-247-0772



www.taxexemptleasing.com

March 31, 2023

Village of Maywood
40 East Madison
Maywood, IL

Re: Financing of a New Vector Combination Sewer Cleaner on an International Chassis

Ladies and Gentlemen:

We are pleased to provide the Village of Maywood, IL with the following lease-purchase financing proposal. Tax-exempt leasing is a financing tool that allows municipal entities to purchase needed equipment immediately and pay for it over time. It's also a terrific way to avoid inflation by protecting you from future price increases! Under a lease-purchase financing arrangement, each payment you make is applied to principal and interest and, at the end of the term, YOU own the equipment outright. We simply record a security interest in the equipment until the loan has been repaid in full.

The illustration below shows payments for a 7-year term.

Equipment Cost: \$568,940.00

Term:	<u>7-years</u>
Interest Rate:	6.15%
Semi-Annual Rate Factor:	.08898
Semi-Annual Payment Financing \$568,940^:	\$50,624.28
Annual Rate Factor:	.18009
Annual Payment Financing \$512,046^^:	\$92,214.36

Rates, factors and payments assume that the Customer is a municipal, tax-exempt entity and the purchase of the equipment falls within the type of equipment allowed as tax-exempt under the I.R.S. Code. In the event this purchase is not exempt, the rate and payments will be adjusted accordingly. Further, it is assumed that the transaction will be "bank-qualified" and that the customer will not issue more than \$10 million in tax-exempt leases or bonds in the current calendar year.

This quote is valid for 14 days and is subject to credit approval and proper documentation.

^-Payments shown are due semi-annually in arrears (i.e., the first payment is due six months from the date of the lease contract with subsequent payments due semi-annually thereafter).

^^-For annual payments in arrears, the first payment is due one year from the date of the lease contract with subsequent payments due annually after. A MINIMUM OF 10% DOWN IS REQUIRED IF OPTING TO MAKE ANNUAL PAYMENTS.

Tax-Exempt Leasing Corp. is a privately-held equipment finance company providing innovative financing solutions to tax-exempt entities nationwide. We understand our customers' needs and provide them with competitive rates and superior customer service. Please let me know if I can answer any questions or if you would like to look at any additional proposals or options. I can be reached at 888-247-0771 or via cell phone at 708-347-6367.

Kind Regards,

Joanne Deegan
Senior Account Executive

ENGINEERED TO PERFORM
BUILT TO LAST

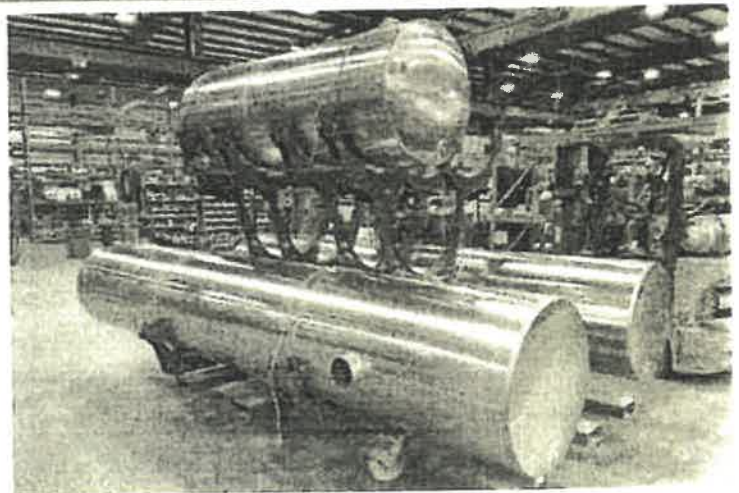
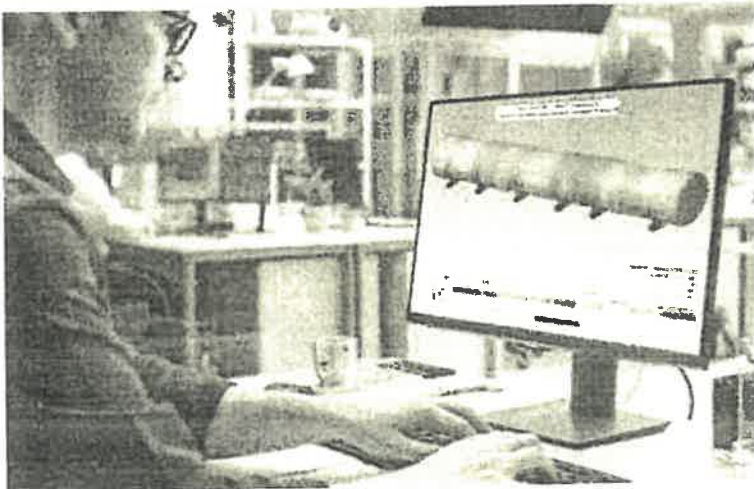


VACTOR[®]
Subsidiary of Federal Signal Corporation



SUPERIOR POWER AND PERFORMANCE GUARANTEED

Vactor, a Federal Signal company, is the largest manufacturer of sewer cleaning equipment in the world. What sets us apart is our commitment to quality, innovative design, superior performance, operating ease, and strong customer support. Together with our international dealers and partners we provide you with the powerful support and personalized service you need to get the job done.



OUR MODUL-FLEX® DESIGN LETS US ENGINEER THE IDEAL MACHINE FOR YOU

As a result of Vactor's unique, trademarked Modul-Flex design, your equipment is engineered and manufactured to meet your specific and most demanding applications. Modul-Flex offers you both accuracy and flexibility, and essential operational advantages:

- Provides for maximum debris body and water tank capacities while ensuring optimum weight distribution on every truck
- Helps you meet local axle load distribution standards and safety regulations
- Center of gravity is calculated for each truck to ensure a safe configuration with optimal weight transfer
- Includes our aluminum water tanks that are warrantied for 10 years, and are customized to the right sizes, capacities, and locations to meet specific chassis requirements

THE CLEANING POWER YOU NEED TO HANDLE YOUR TOUGHEST SEWER CHALLENGES

In all Vactor equipment models you will find rugged and innovative features that deliver the performance you need to handle your most demanding sewer cleaning tasks.

VACTOR'S JET RODDER® SINGLE PISTON WATER PUMP FEATURES A STANDARD 2-YEAR WARRANTY

Purpose-designed for sewer system cleaning and refined over 50 years of proven performance, our unique high pressure water pump gives you the power to break up even the toughest blockages. The Jet Rodder pump is a positive displacement, high-pressure, double acting, hydraulically operated, single piston pump specifically designed for sewer cleaning operations, whose design allows for configurations up to 100 gpm US (378 lpm) @ 2000 psi.



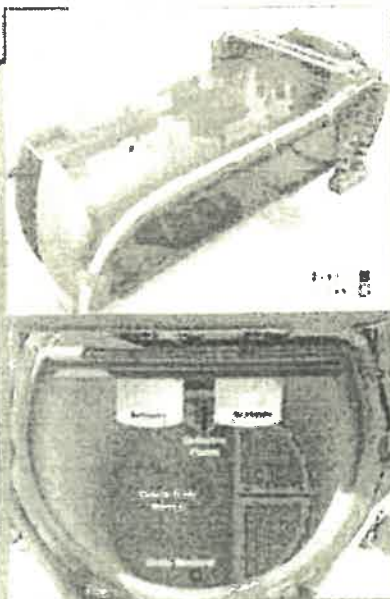
- Creates a powerful "jackhammer" action to assist the nozzle in breaking up and penetrating obstructions
- Run dry protection for 30 minutes certified by Vactor
- Powered from the chassis engine without the need of auxiliary engine or belt drive
- Operates at 14 to 25 cycles per minute (typical configurations in continuous duty operations)
- The pump location provides a flooded suction inlet to eliminate potential cavitation damage or the need for a charge pump
- Single moving part reduces wear and tear of pump components and maintenance costs

JET RODDER PUMP CONFIGURATIONS

Flow and Pressure	Power Requirements	Hose Size
40 gpm @ 2500 psi / 151 lpm @ 172 bar	73 h / 54 kw	3/4" or 1" / 19 or 25.4 mm
60 gpm @ 2000 psi / 227 lpm @ 138 bar	88 hp / 66 kw	1" / 25.4 mm
60 gpm @ 2500 psi / 227 lpm @ 172 bar	110 hp / 82 kw	1" / 25.4 mm
80 gpm @ 2000 psi / 303 lpm @ 138 bar	117 hp / 87 kw	1" / 25.4 mm
80 gpm @ 2500 psi / 303 lpm @ 172 bar	146 hp / 109 kw	1" / 25.4 mm
100 gpm @ 2000 psi / 379 lpm @ 138 bar	146 hp / 109 kw	1 1/4" / 31.75 mm

OUR CORROSION- AND ABRASION-RESISTANT DEBRIS BODIES CAN WITHSTAND YEARS OF WEAR

- Cylindrical for maximum strength
- Material 3/16" (4.7 mm) - single axle; 1/4" (6.4 mm) - tandem axle
- Volumetric capacities: 5 yd³ (3.8 m³) 10 yd³ (7.6 m³) 12 yd³ (9.2 m³) 15 yd³ (11.5 m³)
- Mounted on an independent sub-frame separate from the chassis frame via a 3 point mounting system to allow flexing to occur without causing frame damage
- Standard dump height allows easy body dumping at transfer stations or on containers: single rear axle configuration: 48" (1.2 m); dual rear axle configuration: 60" (1.5 m)
- Features a dumping angle of 50° via a double acting hydraulic cylinder
- Standard dual air ducting system equipped with dual stainless steel floating balls inside corrosion resistant cages as a safety shutoff system
- Abrasion resistant deflector plates divert the air stream to the bottom as part of the first phase of debris separation
- Includes a load level indicator
- Centrifugal separators (cyclones) (optional in certain models) aid in material separation and help to prevent the ingestion of 50 micron or larger particulate into the vacuum generator



ENHANCED OPERATOR EXPERIENCE

Quieter engine design

Lower water fill point

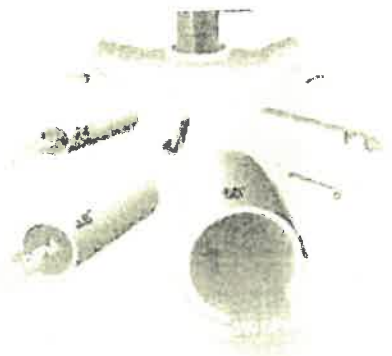


Hose reel telescopes
out up to 15" and
rotates up to 270° for
optimal positioning

High ground
clearance

Patented twist lock pipe
restraints

VACTOR 2100i OFFERS YOU GREATER OPERATING EASE AND EFFICIENCY



Vactor's Multiflow system lets operators
set the flow at a lower rpm resulting in
better fuel economy without sacrificing
performance



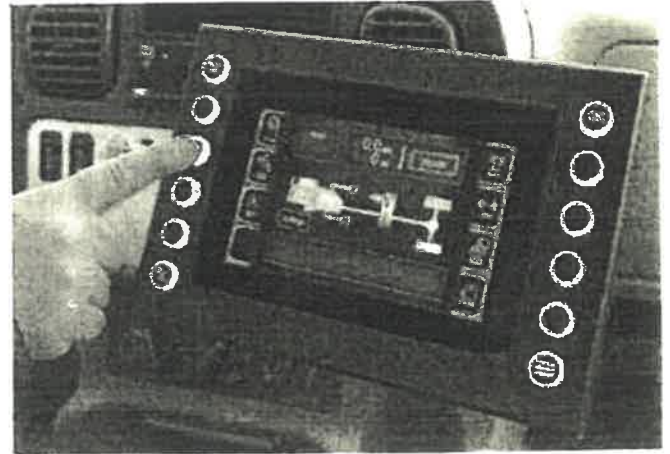
All water valves are located in the same
mid-ship control station, reducing the
amount of walking back and forth around
the truck by the operator

VACTOR 2100i

INTUITIVE IN EVERY WAY.

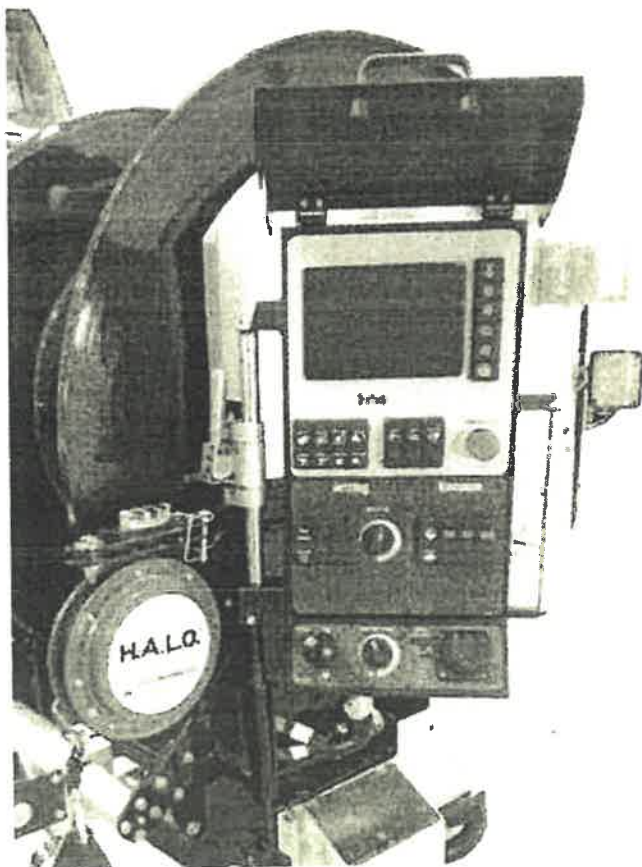
NEW INTUITOUCH® ONE-TOUCH IN-CAB CONTROLS REDEFINE SIMPLICITY

- 7" touch screen control features back lit tactile buttons
- Includes controls and viewing screen for camera, lighting, recirculation and PTO/Transfer case activation
- One-Touch engagement to activate PTO and transfer case – allowing operators to gain control of all operational systems
- Operator can view the current operating mode, recirculation status, flows, pressures and more



NEW INTUITOUCH CONTROL STATION PUTS ALL CLEANING SYSTEM FUNCTIONS INTO A SINGLE, SIMPLE CONTROL PANEL

- Articulating controls with up/down adjustment for individualized maximum comfort – articulation allows the control panel to adjust on a 90 degree arc for better access and screen visibility while operating the hose reel and boom
- All controls are consolidated into a single control panel including a 7" dashboard screen with glove-friendly tactile buttons featuring at-a-glance data for water pressure and flow, hose footage, chassis RPM, vacuum information, water level*, debris tank level* and more



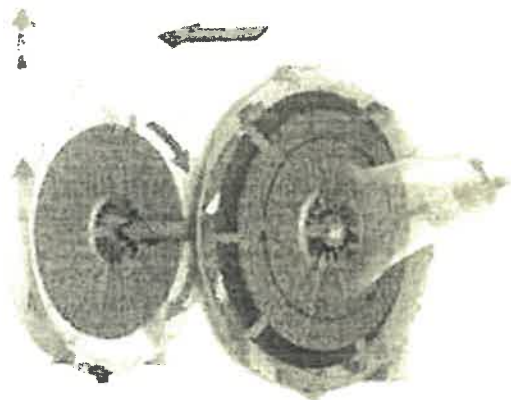
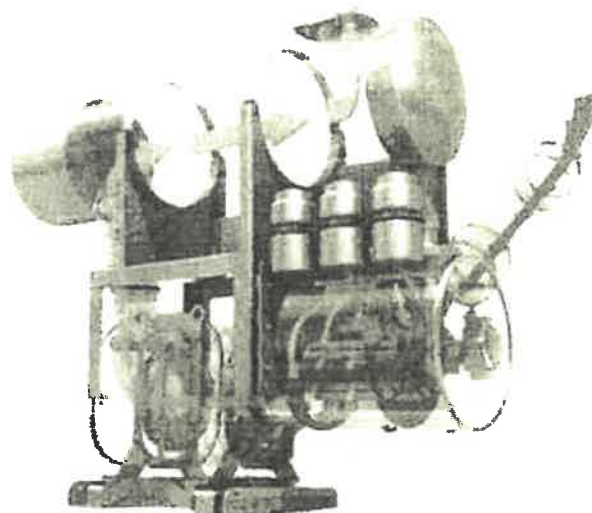
IntuiTouch® 

- New, reliable touch buttons with back lit feedback enable the operator to know if a selected function is active
- The hose reel joystick significantly improves response time and pays in and out in the direction of the hose reel
- The boom joystick has a telescoping feature built in, giving the operator full mobility with multiple direction boom movement for quicker set up
- Operators have full control of the water system via a single Multi-Flow control dial – enabling them to precisely match the flow and pressure to the job requirements
- E-stops located at all operator control points bring the unit to a safe condition to protect both the operator and the equipment

VACTOR 2100i COMES IN THE CONFIGURATION YOU NEED

OUR POSITIVE DISPLACEMENT (PD) MODEL IS IDEAL FOR PULLING MATERIAL LONG DISTANCES

With blower offerings providing inlet volumes in excess of 5000 CFM and 18 Hg vacuum, the Vactor 2100i PD is the machine you need to tackle your deepest pulls. In addition, our multi-stage blower filtration system is the most productive of its kind, and unique design features make the 2100i the most operator friendly unit available.



FOR ALL AROUND SERVICE, CHOOSE A SINGLE ENGINE, SINGLE OR DUAL STAGE FAN MODEL

Vactor's fan system is the right choice for all-around sanitary and storm sewer cleaning. Whether equipped with a single or dual (for greater vacuum) fan system, our lightweight, perfectly balanced aluminum fan provides superior performance to handle your toughest jobs. Our unique system also minimizes energy consumption while maximizing performance.

CENTRIFUGAL CYCLONES

Designed and located to improve air filtration and permit easier cleaning. The air enters the top side of the cyclone causing a vortex and any airborne particles to drop and be "dumped" with the rest of the load.



CUSTOMIZE YOUR 2100i WITH PERFORMANCE DRIVEN OPTIONS

RDB 1015

RAPID DEPLOYMENT BOOM

Our revolutionary RDB boom telescopes 10 feet out and extends the debris hose down 15 feet speeding work, and, in many cases, eliminating the need for additional tubes, reducing operator fatigue. The RDB 1015 offers you:

- Dramatic reduction in set-up and tear-down time with boom's ability to pay-in and pay-out 15 feet of vacuum hose
- Reach greater depths without raising the position of the boom to enhance speed and efficiency
- The ability to work in areas of low overhead clearance without raising the boom and still reach needed depths



WIRELESS CONTROLS

Vactor has enhanced its wireless controls with a belly pack and handheld remotes that feature two-way data transmission, including active pressure and flow information for the water and the ability to monitor hose footage being paid out or retracted. Our wireless controls also allow:

- Extensive operation with greater control away from the fixed operator station
- Multiple control functions including hose reel control, boom control, e-stop and more

OVER 100 PRECISION-ENGINEERED ENHANCEMENTS ARE AVAILABLE, INCLUDING:

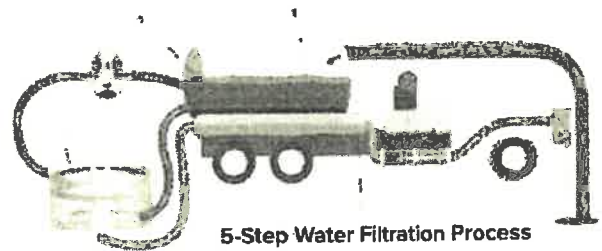
- Cold weather recirculation system
- Liquid debris pump-off system
- Debris flush-out system
- Fail-safe hydraulic door locking system
- Water tank capacity up to 1,500 gallons (5,678 L)
- Pump delivery system up to 100 gpm
- Hose reel capacity up to 1,000 ft. (305 m)
- Automatic hose level wind guide
- Safety warning lighting packages
- Hydro-Excavation Kits

VACTOR WATER RECYCLERS CAN HELP YOU MINIMIZE COSTS AS YOU MAXIMIZE RESOURCES



You can maintain and repair sewer lines and save hundreds of thousands of gallons of fresh water every year with a Vactor Water Recycler. Beyond water savings, by eliminating the need to refill water tanks, you drive up productivity, cutting time, effort, and expense. Designed to work exclusively with our 2100i Series combination sewer cleaners, our Water Recyclers offer you:

- Continuous operation without stops
- 5-step water filtration process combining settling, centrifugal separation, and absolute filtration to 100 microns
- No need to enter the debris body for maintenance
- No moving parts inside the debris body
- Ground level access for washing coarse screen filter
- Automated back flush every 30 seconds
- Self-monitoring filter with low and high pressure shutdowns
- Water source selection—clean water, recycled water or both



5-Step Water Filtration Process

1. Initial Separation (inside the debris body by the deflector plates)
2. Coarse Screen Filter
3. Centrifugal Separation
4. Classification Filter
5. Final Settling

VACTOR SERVICE AND SUPPORT



VACTOR REBUILD PROGRAM

This comprehensive service program is designed to keep your Vactor equipment operating at top performance.

Including:

- An all-points vehicle inspection
- Genuine OEM replacement parts
- All work done by factory-trained technicians
- 10% parts discount
- Engineering improvements and retrofit options
- Equipment testing to factory specifications

PERFORMANCE UPGRADES

Your equipment represents a significant investment for your community or business. With our Performance Upgrades you can maximize the life, long-term value, versatility and performance of your equipment. Retrofit options include updates to add new safety, productivity and performance features.



OPERATOR, MAINTENANCE & SERVICE TRAINING

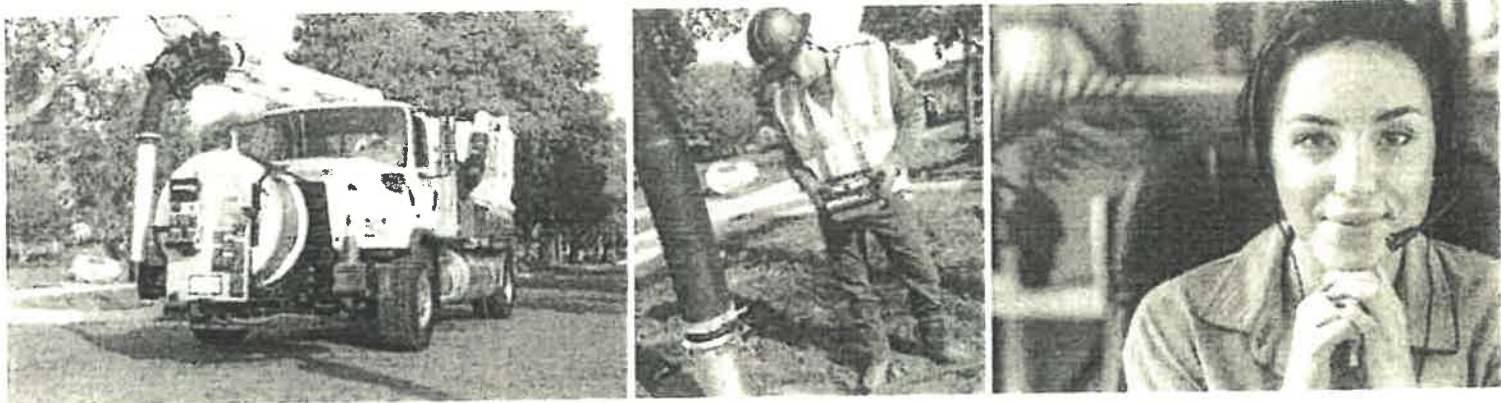
To help you and your team get the most from all the performance features we build into our equipment Vactor offers a comprehensive training program that includes hands-on classes on operation, maintenance and service.

LEARN
MORE



2100i SPECIFICATIONS

Model	2100i - FAN	2180i - PD
DESIGN	Exclusive Vactor Modul-Flex®	Exclusive Vactor Modul-Flex®
Air Mover	Single or Dual Stage Hydrostatic Fan	Roots / positive displacement
VACUUM RATING	--	Up to 18 in (457 mm) Hg
INLET VOLUME	-	Up to 5000 CFM
DRIVE	Chassis driven, direct drive	Chassis driven, direct drive
OMSI TRANSFER CASE	Hydrostatic	Direct driven off of chassis
FULLY HYDRAULIC BOOM	Proportional Boom Controls with 180° rotation	Proportional Boom Controls with 180° rotation
PICKUP HOSE	7" or 8" Diameter	7" or 8" Diameter
DEBRIS BODY CAPACITY	5 yd3 - 15 yd3 (3.8 m3 - 11.5 m3)	5 yd3 - 15 yd3 (3.8 m3 - 11.5 m3)
WATER TANK CAPACITY	1,000 gal - 1,500 gal (3,785 L - 5,678 L)	1,000 gal - 1,500 gal (3,785 L - 5,678 L)
WATER TANK CONSTRUCTION	Aluminum (10-year warranty)	Aluminum (10-year warranty)
WATER PUMP	Vactor Jet Rodder® Multi-Flow system	Vactor Jet Rodder® Multi-Flow system
WATER DELIVERY	60 gpm - 100 gpm at 2,000 psi - 3000 psi	60 gpm - 100 gpm at 2,000 psi - 3000 psi
PUMP ACTION	Continuous flow or Jack Hammer®	Continuous flow or Jack Hammer®
HOSE REEL	15" Telescope, 270° rotation 800 ft x 1 in capacity (244 m x 2.5 cm)	15" Telescope, 270° rotation 800 ft x 1 in capacity (244 m x 2.5 cm)
REAR DOOR	Flat, hydraulically opening with fail safe locks	Flat, hydraulically opening with fail safe locks
SMART TRUCK FEATURES	E-stops at all operator stations Flow / footage meters Smart messages	E-stops at all operator stations Flow / footage meters Smart messages
HAND GUN SYSTEM	35' of hose High Pressure Washdown gun	35' of hose High Pressure Washdown gun
CUSTOM CONFIGURATIONS		
Hose Reel	Up to 1,000 ft capacity (305 m)	Up to 1,000 ft capacity (305 m)
Multiple Boom Options	RDB 1015 10' Extendable Boom 10' Tele Boom 5x5 Boom	RDB 1015 10' Extendable Boom 10' Tele Boom 5x5 Boom
Axles	Single or Tandem Tri-Drive and Drop axles also available	Single or Tandem Tri-Drive and Drop axles also available
Controls	Wireless Belly pack Handheld Wireless Corded Pendant	Wireless Belly pack Handheld Wireless Corded Pendant
WATER RECYCLING AVAILABLE	NO	YES



OUR COMMITMENT TO QUALITY ONLY BEGINS WITH OUR EQUIPMENT

The Vactor 2100i is manufactured in an ISO 9001 certified, advanced industrial plant. We employ the latest technology to build the most reliable equipment, including high-precision laser cutters, robotic welding, efficient, accurate computer numerical controls, and a sophisticated powder coating system.

When you build a quality product you can back it up with a full one-year, unlimited hours warranty. Vactor also backs up your investment with superior local service and support. Our goal is to keep your machine—and your entire operation—up and running.

The 2100i can be customized to your unique requirements to meet local standards and regulations by means of a broad selection of configurations, options and accessories.

Through our international dealer network, we maintain a vast inventory of spare parts and offer fast shipment to any region of the world.

Altogether, the rugged, reliable Vactor 2100i is easy to operate, easy to maintain, and an easy choice when you are looking for quality equipment that is built to last.



VACTOR

BRINGING YOU THE POWER YOU NEED TO PERFORM

Vactor Manufacturing, the world leader in sewer cleaning equipment, with more than 20,000 specialty vehicles sold worldwide in the last 15 years, is part of Federal Signal, a leader in integrated solutions for governments and industries worldwide

Our mission is to provide you with not only the best equipment, but the best aftermarket service and support in the industry. Together, we can offer you comprehensive operator training and a vast parts inventory to cut downtime and keep your operation up and running.



VACTOR

Subsidiary of Federal Signal Corporation

vactor.com

Vactor Manufacturing, LLC • 1621 South Illinois Street • Streator, IL 61364 USA
Phone 815.672.3171 • Fax 815.672.2779

Specifications subject to change without notice. Some products shown with optional equipment. Vactor®, JetRoder®, IntuiTouch®, and ParkNClean® are registered trademarks of Vactor Manufacturing, LLC. Products may be covered by one or more United States Patents and/or pending patent applications.
See: www.vactor.com/patents. Vactor Manufacturing, Inc. is a subsidiary of Federal Signal Corp.

Federal Signal Corp. is listed in the NYSE by the symbol FSS.
Effective Date 7/2022 P/N 00107-4 ©2022 Vactor Manufacturing
Printed in the USA

STATE OF ILLINOIS)
) SS
COUNTY OF COOK)

CLERK'S CERTIFICATE

I, Gwaine Dianne Williams, Clerk of the Village of Maywood, in the County of Cook and State of Illinois, certify that the attached document is a true and correct copy of that certain Resolution now on file in my Office, and is entitled:

RESOLUTION NO. R-2023-21

**RESOLUTION AUTHORIZING A WAIVER OF THE COMPETITIVE BID PROCESS
FOR THE PURCHASE OF ONE (1) NEW VACTOR COMBINATION SEWER CLEANER TRUCK WITH AN
INTERNATIONAL CHASSIS, AND APPROVING AND AUTHORIZING THE EXECUTION OF A PURCHASE
LEASE AGREEMENT WITH TAX-EXEMPT LEASING CORP. IN THE AMOUNT OF \$568,940.00 FOR THE
PURCHASE, CONSTRUCTION AND DELIVERY OF THE VACTOR COMBINATION SEWER CLEANER TRUCK**

which Resolution was passed by a roll call vote of the Board of Trustees of the Village of Maywood at a Special Village Board Meeting on the 18th day of April, 2023, at which meeting a quorum was present, and approved by the President of the Village of Maywood on the 18th day of April, 2023.

I further certify that the vote on the question of the passage of said Resolution by the Board of Trustees of the Village of Maywood was taken by Ayes and Nays and recorded in the minutes of the Board of Trustees of the Village of Maywood, and that the result of said vote was as follows, to-wit:

AYES: Mayor Booker, Trustees A. Sanchez, S. Reyes-Plummer, M. Jones, M. Lightford
A. Peppers and I. Brandon

NAYS: _____

ABSENT: _____

I do further certify that the original Resolution, of which the foregoing is a true copy, is entrusted to my care for safekeeping, and that I am the lawful keeper of the same.

IN WITNESS WHEREOF, I have hereunto set my hand and affixed the seal of the Village of Maywood, this 18th day of April, 2023.

Gwaine Dianne Williams, Village Clerk

[SEAL]