

Mason County

# All Hazards Preparedness Guide

**Mason  
County  
Division of  
Emergency  
Management**

**Hazards Most  
Likely to Hit  
This Region**

**How to Protect  
Your Family and  
Home**

**Neighbors  
Helping  
Each Other**

**Preparing Your  
Business for  
Disaster**

**Get Involved with  
Mason County  
Volunteer Services**

*Developed by*

**Mason County Division of  
Emergency Management**



**Washington State Military  
Emergency Management Division**



August 10, 2017

Dear Local Residents and Visitors,

What attracts you to Mason County?

When you ask a recent resident or visitor that question, they often answer they were a visitor first, and after a period of time, they bought a house or moved their business here. A common phrase that captures the spirit of Mason County residents is “I get to live where others come to play.”

Mason County’s chief features are Hood Canal and the Olympic Mountain Range, which form our county’s western border. Our eastern edge is formed by the many bays and inlets of South Puget Sound. Our high point is Mt. Stone at 6,812 feet. Our hills are covered with lush green trees and thick foliage.

Historically, Mason County has been a world’s leader in several different industries. For generations the iconic image of the Northwest laborer—a confident and skilled outdoorsman—matched a broad number of Mason County workers in the forest products, natural resources and shellfish trades.

Along with the natural beauty and mild weather Mason County enjoys, there have been times that residents have been subjected to harsh winter weather, powerful wind storms, flooding of rivers and streams, landslides and in September 2012 the Power Line Two wildfire event. These events have blocked roads, closed bridges, and caused power outages, but they have brought the best responses from our community residents. Neighbors have helped rescue trapped people and animals, cleared trees from streets, delivered meals to those in need, donated goods and services to first responders and other critical activities that have helped Mason County respond to and recover from the impacts of disasters..

The Mason County Commissioners strongly suggest that you read this *All Hazards Guide* brought to you by the County Division of Emergency Management (DEM) and keep a copy handy so it will be available to you in the future. The *Mason County All Hazards Guide* can help you and your family be prepared to respond to natural or man-made events.

Thank You,

Mason County Commissioners

Cover photo: *Power Line 2 fire in 2012*  
provided by Central Mason Fire & EMS.



## A Letter from Mason County Manager, Division of Emergency Management

Dear Mason County Residents and Visitors,

Even though Mason County is a safe and healthy community, it is the responsibility of all citizens to prepare for natural and man-made disasters. The *Mason County All Hazards Guide* will help you create your Family Disaster Plan. Whether you are an individual or a large family, creating your Family Disaster Plan will help you prepare for, respond to, and recover from a disaster.

The main focus of this guide is to address the following questions:

- What should I do before a disaster?
- What should I do during a disaster?
- What should I do after a disaster?

In a large scale disaster it will take time, perhaps days, for emergency responders to mobilize resources to provide food, shelter and medical care to our community. During the initial stages of a disaster we need to be able to help ourselves, our families, and our neighbors. We cannot count on emergency responders to reach us quickly. What will you do if help is a long time in coming?

This guide will help you be prepared for all stages of a disaster. Please read this *Mason County All Hazards Guide* and use it as a resource when preparing for your family's safety. Understanding what to do can reduce fear, anxiety and losses that accompany disasters and may make all the difference when seconds count.

If you have questions regarding any of the information contained in the guide, please contact the Mason County Division of Emergency Management (DEM) at 360-427-7535 or visit the Mason County Homepage at <http://www.co.mason.wa.us/> and click on the "e-mail us" link.

Sincerely,

G. Ross McDowell  
Emergency Management Manager  
Mason County

# TABLE OF CONTENTS

Hazardous Events in Mason County . . . . .	4
Ready Mason County . . . . .	4
<b>Create Your Emergency Plan</b>	
Out of Area Contact . . . . .	5
Plan Your Evacuation Route . . . . .	5
Prepare Your Vehicle . . . . .	5
Emergency Preparedness Kit . . . . .	6
How to Store Water . . . . .	6
Prepare in a Year . . . . .	7
<b>Specialized Emergency Preparedness</b>	
Functional Needs . . . . .	8
Mason County Functional Needs Registry . . . . .	8
Pets and Livestock . . . . .	8
<b>Community Involvement</b>	
Map Your Neighborhood (MYN) . . . . .	9
<b>Prepare Your Home</b>	
Preparing Your Home for Disasters . . . . .	10
Securing Water Heaters and Utilities . . . . .	11
<b>What to Do in Disaster Events</b>	
Earthquake . . . . .	12
Minimize Flood Damage . . . . .	13
Mold Clean Up . . . . .	13
Wildfire . . . . .	14
Severe Windstorm . . . . .	14
Severe Winterstorm . . . . .	15
Power Outage . . . . .	15
Landslide . . . . .	16
Hazardous Chemical Spills . . . . .	17
Terrorism Awareness . . . . .	17
Shelter In Place . . . . .	18
Water and Food Safety . . . . .	19
Business Continuity Planning . . . . .	20
Helping Children Cope with Trauma . . . . .	20
<b>Mason County Volunteer Programs and Services</b>	
Community Emergency Response Team (CERT) . . . . .	21
Disaster Animal Rescue Team (DART) . . . . .	21
Communications Support Team (CST) . . . . .	21
Emergency Operations Center (EOC) . . . . .	22
Critical Incident Stress Management Team (CISM) . . . . .	22
Explorer Search and Rescue Team (ESAR) . . . . .	22
Medical Reserve Corps (MRC) . . . . .	23
Mason Co. Division of Emergency Management . . . . .	23
<b>Emergency Resource Directory — Back Cover</b>	
Out-of-Area Contact . . . . .	Back Cover

Publication produced by Mason County Division of Emergency Management, Washington State Emergency Management Division, the Resilience Institute of Western Washington University and students of its Disaster Risk Reduction and Emergency Planning Studio, Huxley College of the Environment.

# HAZARDOUS EVENTS IN MASON COUNTY

While hazards have the potential to cause injury or property damage and disrupt your normal way of life, preparing ahead of time can significantly minimize disturbances. Knowing what to do during and after an emergency can reduce fear, anxiety and losses after a disaster. This All Hazards Preparedness Guide will help you and your family prepare for the next hazard.

The All Hazards Preparedness Guide provides a step-by-step approach to disaster preparedness by explaining how to prepare for local hazards, how to develop an emergency plan and disaster supplies kit and where to get information about local emergency plans.

It also includes information on how to prepare for specific hazards to which Mason County is most vulnerable. Other topics include evacuation, caring for your pets and/or livestock during disasters, information specific to people with functional needs, volunteer programs within Mason County

and much more. In applying what you learn from this guide, you will be taking the necessary steps to be ready when an event occurs.

## Potential Hazards in Mason County

1. Floods
2. Earthquakes
3. Landslides
3. Windstorm
4. Wildfire
5. Winterstorm
6. Power Outage
7. Chemical Hazards
8. Terrorism



## READY Mason County

Launched in 2003, Ready is a national campaign designed to educate and empower Americans to prepare for and respond to emergencies including natural and man-made hazards. Ready asks individuals to do three key things:

1. Build an emergency supply kit,
2. Make a family emergency plan, and
3. Be informed about the different types of local emergencies and their appropriate responses.

As you prepare, tailor your plans and supplies to your specific daily living needs and responsibilities. Most or all individuals have both specific personal needs as well as resources to assist others. You, your

household, and others you help or rely on for assistance should work together.

As part of tailoring your plans, consider working with others to create networks of neighbors, relatives, friends and co-workers who will assist each other in an emergency. Discuss your needs and responsibilities and how people in the network can assist each other with communication, care of children, pets, or specific needs like the operation of durable medical equipment. Reading this pamphlet will help you and your family be Ready for the next emergency.

For more information on the Ready program, including brochures, checklists, videos and other preparedness materials visit [www.Ready.gov](http://www.Ready.gov)



# CREATE YOUR EMERGENCY PLAN

## Create a Household or Family Emergency Plan

Creating a plan that fits your needs before, during, and after a disaster will help you be more self-reliant in an emergency. Because disasters can happen at anytime, it is important to plan on being separated from loved ones during a disaster. Preparing a list of contacts, individual roles during a disaster, and meeting places can help reunite families in the event of separation.

- **Create an evacuation route.** Identify family meeting places by choosing a location close to your home and another outside your neighborhood. Identify alternative evacuation routes in your home and in buildings you frequent. Become familiar with alternative routes and other means of transportation out of your area. If you require assistance, involve your support network in the plan.
- **Create a communication plan.** Ask a friend or family member if they can be your out-of-area contact. Ideally, this contact must be 100 miles away from your because local telephone lines may be jammed during a disaster. Write down important phone numbers of family members, friends and public emergency numbers on small cards so that each family member can have them in their wallet, purse, or backpack.



## Create Your Emergency Supply Kit

A disaster supply kit is simply a collection of basic items your household may need in the event of an emergency. In an emergency or disaster, electrical, water, transportation, and other vital systems can be disrupted. You may be on your own for days, even weeks, after disaster strikes.

By taking time now to prepare emergency water, food and other supplies, you will be able to provide

for yourself and your family during an emergency. Since you do not know where you will be when an emergency occurs, prepare an emergency kit for your home, work and vehicle.

- **Store at least 14 days of emergency supplies.** Between a mobile go-kit and a home kit we recommend 14 days of supplies. In the event of an evacuation,

you will be able to grab your go-kit and leave quickly. Store these supplies in a watertight container that can be easily moved. Some examples are a plastic tub with a tight-fitting lid and handles, a trash can on wheels or a duffel bag lined with plastic. The container should be able to handle some abuse when you drop it during an earthquake.

- **Store your supplies kit in an easily accessible location.** Locate your household supplies kit as close to your primary house exit as possible. You may have to leave your home quickly or find it in the dark or after the

upheaval of an earthquake. Make sure all of your family members know where your emergency kit is kept.

- **Store water containers in your kit or in a cool, dry place away from direct sunlight.** Having an ample supply of clean water is a top priority in an emergency. You should keep at least a three-day supply of water for each person in your household. The rule of thumb is one gallon per person per day for at least three days. This means you should place a minimum of three gallons for each person in your emergency supplies kit.

### PREPARE YOUR VEHICLE

Emergencies can occur at any time. Make sure your vehicle is in working order and place a vehicle emergency supply kit in it. Your vehicle supply kit can easily be made with items already in your vehicle or in your home. Some items to consider:

- Water - 1 gallon per person
- Snacks, non-perishable foods
- Extra warm clothing - boots, gloves, ponchos
- Thermal emergency blankets
- First aid kit

- Small shovel
- Jumper cables
- Road flares
- Ice scraper/snow brush
- Tire chains
- Cell Phone charger
- Battery operated radio or hand crank radio
- Flashlight
- Extra batteries

For more information and for winter driving tips in Washington, go to: <http://takewinterbystorm.org/>



# EMERGENCY PREPAREDNESS KIT

## RECOMMENDED SUPPLIES TO INCLUDE IN YOUR EMERGENCY KIT

- **Water:** at least 1 gallon per person per day, enough to last 14 days.
- **Non-perishable food.** Foods that require no refrigeration, preparation, or cooking are best - canned food, dried fruit, peanut butter, uncooked instant cereals
- **Flashlight**
- **Portable, battery-powered radio with NOAA Radio capability.**
- **Extra batteries**
- **Basic First Aid kit** and manual
- **Manual can opener** - if kit contains canned food
- **Sanitation and hygiene items** - hand sanitizer, moist towelettes, feminine hygiene products, toilet paper, etc.
- **Wrench or pliers** to turn off utilities
- **List of emergency contact information**
- **Photocopies of important documents** - birth certificate, licenses, insurance information, etc.
- **Items for infants** - (formula, diapers, bottles, and pacifiers) if applicable
- **Supplies to care for your pets** - including 14-day supply of food and water, ID tags, proof of vaccinations, and veterinarian contact information
- **Whistle** - to alert rescuers to your location
- **Dust masks** - prevents inhalation of debris
- **Matches**
- **Rain gear**
- **Towels**
- **Gloves** - for clearing debris
- **Extra clothing** - hat and sturdy shoes
- **Plastic sheeting and duct tape** - to shelter-in-place
- **Household chlorine bleach and medicine dropper**
- **Entertainment items** - such as toys, books, puzzles and games
- **Blankets or sleeping bags**
- **Cash and coins**

### Additional Useful Items to Add in Your Kit

## AFFORDABLE WAYS TO STORE WATER

While purchasing bottled water is recommended, re-using two-liter soda bottles to store emergency water is an economic alternative.

Here are some instructions for preparing two-liter bottles to store water.

**Note:** Plastic soft drink bottles are the best re-use storage containers. Do not re-use plastic jugs or cardboard containers that have had milk or fruit juice in them. They are difficult to clean and eventually break down.

### Preparing Containers

- Clean the bottles with dishwashing soap and water, rinse completely.
- Sanitize the bottles using 1 teaspoon of non-scented liquid household chlorine bleach mixed with one quart of water. Pour the sanitizing solution in the bottle so that it touches all surfaces. Thoroughly rinse out the sanitizing solution with clean water.

### Filling Water Containers

- Fill the bottle to the top with regular tap water. If the tap water is from a public utility, you do not need to add anything else to the water to keep it clean. If the water comes from a well or water source that is not treated with chlorine, add two drops of non-scented liquid household chlorine bleach to the water.
- Tightly close the container and write the date on the outside of the container so you can know when you filled it. Store in a cool, dark place. Water that has not been commercially bottled should be replaced every six months.



Further recommendations for emergency kits can be found here:

<https://mil.wa.gov/emergency-management-division/preparedness/personal>

FEMA: [www.ready.gov/kit](http://www.ready.gov/kit)

Red Cross SW Region: [www.swwredcross.org/be-prepared](http://www.swwredcross.org/be-prepared)

CDC: <https://emergency.cdc.gov/preparedness/kit/disasters/index.asp>

# PREPARE IN A YEAR

## Prepare in a Year

It is easy to believe that disasters will never happen where we live, that our families will never be in harm's way.

Unfortunately, recently declared disasters prove that Washington State's regions routinely experience major impacts from severe winter storms. Floods, landslides and wildfires affect hundreds of thousands of

people living in Washington State. Mason County is also vulnerable to earthquakes and other natural and human-made hazards. Protect yourself and your loved ones by preparing for the impacts of a regional emergency before one happens.

You and your family can follow the set of simple monthly steps below to prepare for disasters over the

course of a year. Some of the activities in the Prepare in a Year program can be completed in just a few minutes, while others might take some time. Mark one activity on each month of your calendar. Taking these steps can provide comfort and security, and will help everyone in the event of a disaster.

### Prepare In a Year - Steps to Disaster Readiness

Month	Monthly Task	What to Do	See Page(s):
<b>January</b>	Develop an Action Plan	Understand the hazards you face and talk to your family about what everyone needs to do.	<b>15-19</b>
<b>February</b>	Create an Out-of-Area Contact Plan	Select someone at least 100 miles away that you can call and talk to if local telephone lines are jammed during an emergency.	<b>5, Back Cover</b>
<b>March</b>	Store Fourteen Days of Emergency Water	Store at least fourteen gallons per person (one gallon per person per day for fourteen days).	<b>6</b>
<b>April</b>	Prepare an Emergency Preparedness Kit	Organize a fourteen day supply of non-perishable food, basic tools, water, and a first aid kit.	<b>6</b>
<b>May</b>	Secure Important Documents	Gather copies of important insurance and financial papers and emergency contact information and add to your disaster kit.	
<b>June</b>	Gather Extended Event Supplies	Prepare for extended emergencies by purchasing things like camping stoves or items that will provide shelter like tents or sleeping bags.	<b>6</b>
<b>July</b>	Assemble Under-Bed Safety Supplies	In the event of an emergency you will want to be able to react quickly and reach under your bed for important things, like a pair of shoes and a flashlight.	
<b>August</b>	Practice Utility Safety	Take some time to learn how and when to turn off utilities after a major disaster such as an earthquake.	<b>11</b>
<b>September</b>	Practice Drop, Cover, and Hold On	Identify the safest place in a room to drop, cover, and hold on during an earthquake!	<b>12</b>
<b>October</b>	Practice Fire Safety	Know how to escape in a fire. Also locate and learn how to use a fire extinguisher.	
<b>November</b>	Prepare Shelter-in-Place	In the case of a chemical airborne agent, you will need to be able to quickly and securely seal doors, windows, vents, and other cracks in your home.	<b>18</b>
<b>December</b>	Practice Response with a Home Hazard Hunt	Spend 30 minutes going through your home and finding things that could fall or break during an earthquake. Secure any items that could fall and hurt someone.	<b>10</b>

### QUICK PREPAREDNESS CHECKLIST

- Know how to contact your children at their school or daycare and how to pick them up after a disaster. Let the school know if someone else is authorized to pick them up. Keep your child's emergency release card current.
- Know where the nearest fire and police stations are located. Learn your community's warning signals, what they sound like, and what you should do when you hear them.
- Learn first aid and CPR. Keep a first aid kit, a first aid manual, copies of medical insurance documents and extra medicine for family members handy.
- Keep a small amount of cash available. If the power is out, ATM machines won't work.
- If you have family members who don't speak English, have them carry emergency cards in English with their names, addresses and information about medications or allergies so that first responders will know how to assist them.
- During a disaster, use the telephone for emergency calls only.
- If you are asked to evacuate, take your emergency kit and follow official directions to a safe place or temporary shelter. Do not try to carry a lot of other possessions.

# SPECIALIZED EMERGENCY PREPAREDNESS

## Preparedness for People with Functional Needs

If you or a family member has functional needs, be sure to consider additional emergency preparedness. In the event of a disaster, emergency responders such as firefighters and medics may not be able to reach you for up to a week. Creating a strong support network in your neighborhood is one of the best ways to prepare before disasters.

### Visually impaired

- Plan for losing the auditory clues you usually rely on after a major disaster.
- If you use a cane, keep extras in strategic locations.
- Plug automatic security lights along hallways to help evacuate after a power outage.
- Store flashlights and batteries (LED preferred) near your bed and in your emergency kit.
- Have alternative routes of getting around other than service animals, during a disaster they may become confused and frightened.
- Mark emergency supplies with large print, bright tape or Braille.

### Hearing impaired

- Know which emergency news media source offers sign language or captions.
- Store hearing aid(s) and batteries where you can easily find them after a disaster.
- Keep your pager, captioned telephone and other communication equipment charged.
- Store pen/paper to communicate and carry important information written down and kept on yourself.

### Special medical needs

- Have at least a 7-day supply of all your medications as well as instructions, with you or in your supply kit.
- Check with your medical supply company regarding a back-up power source such as a battery or generator for medical equipment.

### Physical disabilities

- Store emergency supplies in a pack or backpack that can be carried with or on your mobility equipment.
- Store mobility aids (canes, crutches, walkers, wheelchairs) and a flashlight with extra batteries nearby.
- Keep a pair of heavy gloves in your supply kit to use while wheeling or making your way over glass or debris without cutting hands and risking infection.
- If you use a motorized wheelchair, have an extra battery available.
- Have alternative exits planned if you are handicapped, especially if you live above the first floor.



## MASON COUNTY FUNCTIONAL NEEDS REGISTRY

Individuals who have additional medical needs, and are not served by a nursing home or retirement community are eligible for the Mason County Special Needs Registry. The voluntary registry alerts emergency responders to a resident's address and gives the responders the vital information they need to better meet the resident's needs. Eligible persons can apply for the registry by filling out the Special Needs Registry form from the Mason County Division of Emergency Management office.

**For more information on this service, contact the Mason County Division of Emergency Management (DEM)**

**100 W. Public Works Drive**

**Shelton, WA, 98584**

**Phone: (360) 427-7535**

**Email: <http://www.co.mason.wa.us/questions.php>**

## PREPARING YOUR PETS

Pets are a part of many Mason County families. Your pets depend on you to keep them safe, and the best way to ensure their safety is to include them in your family's disaster plan. By involving your pets in disaster planning you are keeping your pets safe, and your family together. Here are steps that you should take to best ensure the safety and preparedness of your pets.

- Take your pets with you if you practice any evacuation drills so that they are familiar with the routine and also so that you know how to handle your pet during an evacuation.
- Know which motels, hotels, animal shelters, and veterinarians in your area can assist or keep your pets during a disaster. Also have a list of in town and out of town contacts such as friends, relatives, and neighbors who can watch your pets should the situation arise.

**Prepare an emergency supply kit strictly for your pet. This kit should include:**

- All vaccines and medical records in case a shelter needs them. Keep vaccines and documents in a waterproof seal or container.
- Sturdy leashes, harnesses, and carriers to safely transport your pets.
- Current photos in case your pet gets lost.
- At least 14 days worth of pet food and water. Also have bowls, and a can opener should you have canned pet food.
- Blankets to scoop up frightened pets and as a temporary bed.
- Disposable litter trays or bags to pick up animal waste.
- Pet treats and toys.

# COMMUNITY INVOLVEMENT

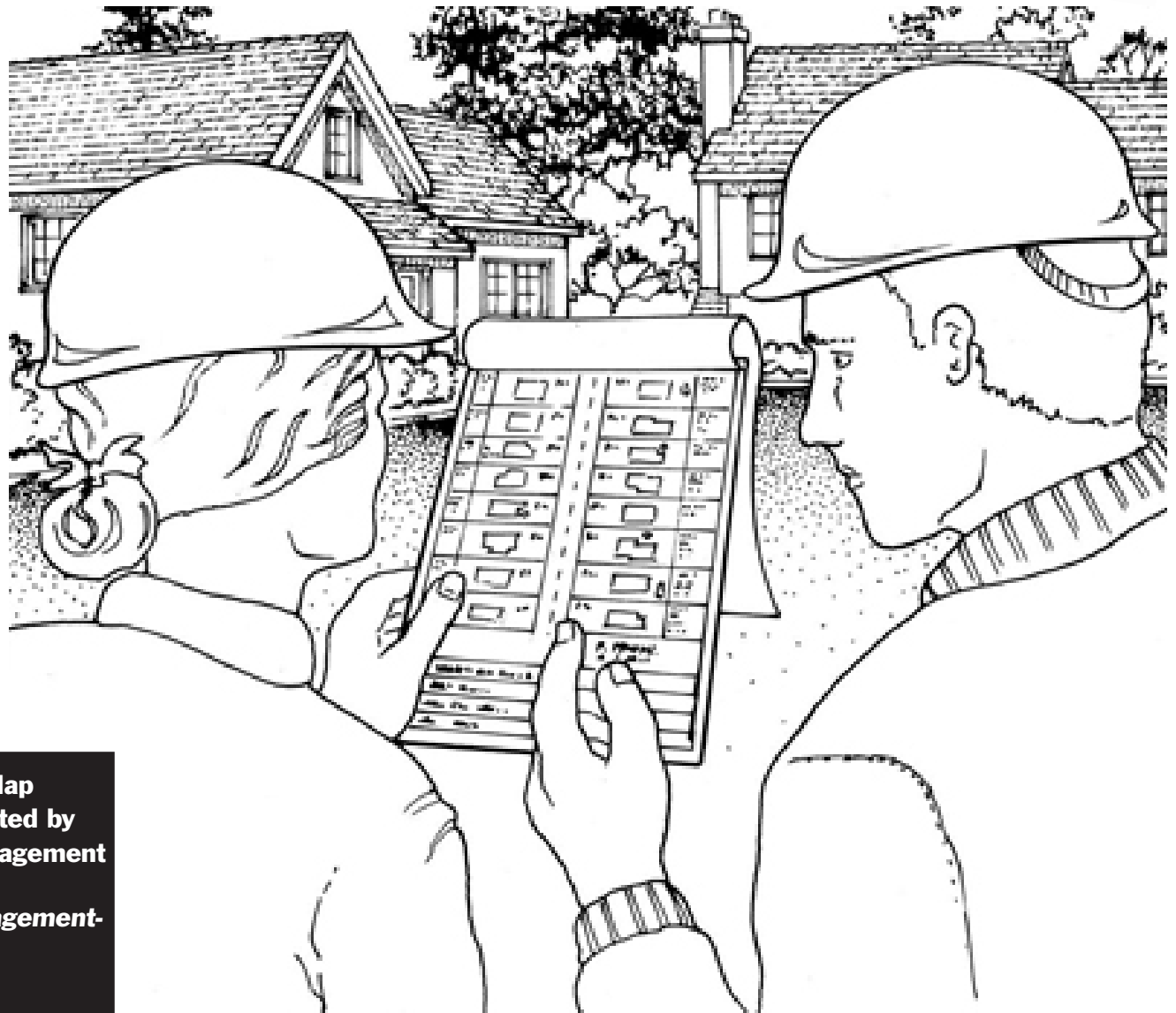
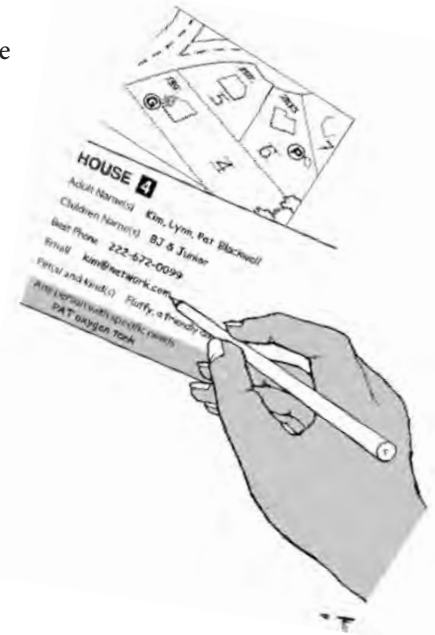
## Map Your Neighborhood

The Map Your Neighborhood Program allows your community to become more resilient by building and strengthening disaster readiness. During an event, traditional 9-1-1 and first responders such as fire, police, and medical personnel may be unable to assist individuals immediately. Your neighbors will be your most immediate source of help in these scenarios. Getting together and creating a plan that includes getting to know one another, recognizing resources, and identifying those with functional needs can lead to a more resilient community.

Neighborhoods that have created and maintained emergency plans are often well prepared in the crucial three days after a disaster strikes. Citizens that know their neighbors and have a plan can act quickly and effectively following a disaster. You can easily start a Map Your Neighborhood program in your own community following a few simple steps:

- Get together with neighbors and meet the people that live around you. Talk to people about what they would need in an emergency, how you could help, and what you might need someone to help you with. Communicate what resources you have and understand what resources others in your area could provide.

- Making a map of the neighborhood houses, properties, natural gas meters and propane tanks. In a disaster, you and your neighbors can use this list to quickly turn off damaged utilities and protect your household from fires, gas explosions and water leaks.
- Creating a list of resources in your area including backup generators, fire extinguishers, large stores of non-perishable foods, and other necessary things during and following an emergency.
- Creating a contact list of individuals with specialized care requirements so that you and your neighbors can help those with specific needs, such as disabled people living alone, parents of young children or citizens at risk for medical problems.



**For more information about the Map Your Neighborhood Program, created by Washington State Emergency Management Division, visit:**  
<https://mil.wa.gov/emergency-management-division/preparedness/map-your-neighborhood>

# PREPARE YOUR HOME

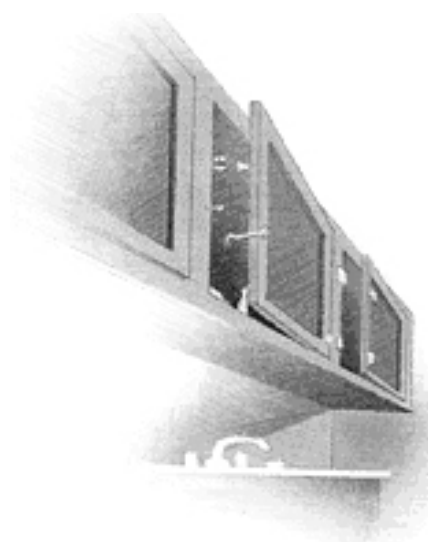
## Preparing Your Home for Disasters

**M**ake your home more resistant to earthquake damage and safer to be in during an earthquake or other disasters by finding and correcting any weaknesses. Unsecured objects within your home that can move, break, or fall during a disaster pose potential safety hazards.

Start by walking through your home to make note of tall, heavy, or expensive items such as bookcases, electronics, appliances, and items hanging from walls or ceilings, such as mirrors or picture frames. These items can be inexpensively secured with flexible fasteners such as nylon straps or closed hooks. Alternatively, you can move items away from beds or seating areas so that if they topple or break, they pose less of a threat.

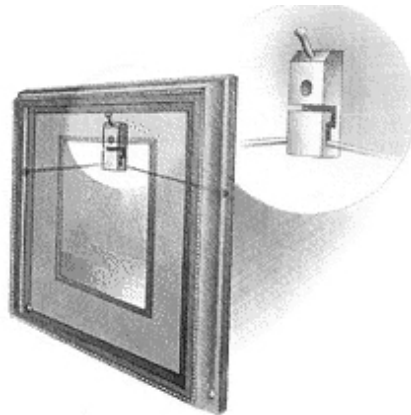
### In the kitchen:

- Unsecured cabinet doors fly open during earthquakes, allowing glassware and dishes to crash to the floor. Child-proof latches, hook and eye latches, or positive catch latches are all effective and inexpensive methods of securing cabinets.



### Hanging objects:

- Mirrors, picture frames and other objects should be hung using closed hooks so they can't bounce off walls during an earthquake. You can also use earthquake putty purchased at a local hardware store to secure the corners of pictures and mirrors.



### Electronics:

- Televisions, computers, microwaves and other electronics are heavy and costly to replace. They can easily be secured using flexible nylon straps and buckles for easy removal and relocation.



### Furniture:

- Secure the tops of all top-heavy furniture, such as bookcases and file cabinets to the wall stud. flexible fasteners such as nylon straps allow tall objects to sway during an earthquake without falling over.



**For more information about how you can prepare your home for disasters, visit:**  
<https://mil.wa.gov/emergency-management-division/preparedness/personal>

## MANUFACTURED AND MOBILE HOME PREPAREDNESS

Protect your manufactured or mobile home from hazards such as earthquakes and flooding by implementing these home improvements:

- Keep the axles and hitch under the home. The axles and hitch alone will not prevent movement of the home during an earthquake but may prevent the home from falling completely to the ground.
- Install ground anchors and tie-down straps. In the event of an earthquake or severe windstorm ground anchors will help stabilize a home and may reduce damage to the home. You can install ground anchors and tie-down straps yourself with relatively inexpensive kits from any home improvement store or have a professional install it.
- Secure foundation piers to their footings and to the main beams of the home. Steel piers are easy to install and will help prevent the home from jumping off the pier or footing during an earthquake. However, in order for steel piers to be effective they should be secured to the main beam of the home and to their footings.
- Install an earthquake resistant foundation specifically designed to support the home during earthquake shaking and severe winds. Earthquake resistant foundations usually have perimeter walls and footings along with piers under the main beam of the home.

# PREPARE YOUR HOME

## Securing Water Heaters

Securing your water heater is one of the most important actions you can take in preparing your home for an earthquake. Water heaters that are damaged during an earthquake can cause fire, and, fresh water after a disaster may be as close as your water heater — provided, it remains upright. You can protect this valuable resource by securing your water heater to the wall studs.

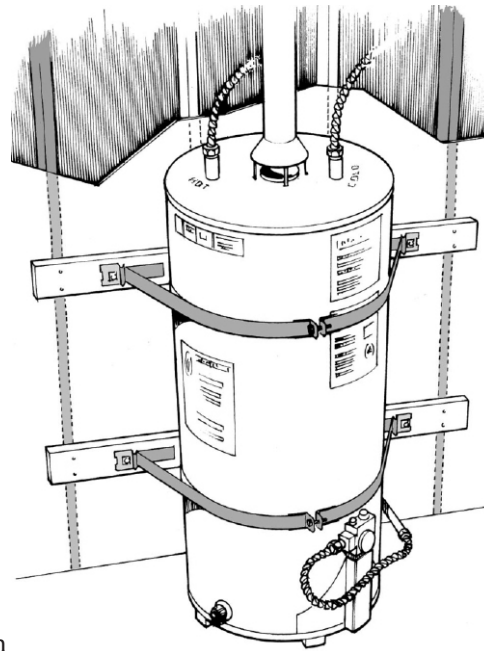
Buy a strapping kit at your local hardware store or by visiting one of these sites for how to make your own strapping kit.

[www.earthquakecountry.org/step1](http://www.earthquakecountry.org/step1)

[www.seismic.ca.gov/HOG/waterheaterbracing\\_08-11-04.pdf](http://www.seismic.ca.gov/HOG/waterheaterbracing_08-11-04.pdf)

### Step-By-Step Instructions

- 1) To prevent the tank from tipping backwards, make sure there is little space between the water heater and the wall. If there is more than 1 or 2 inches, screw a wooden block to the wall.
- 2) Wrap the heavy-gauge metal strapping 1-1/2 times around the top and bottom of the tank. Start by placing the strapping at the back of the tank. Bring it to the front and then take it back to the wall.
- 3) Secure this strapping to wall studs using several 1/4-inch x 3-inch or longer lag screws with oversized washers. If you are securing it directly into concrete, use 1/4-inch expansion bolts in place of the screws.
- 4) Replace all copper and metal piping with flexible natural gas and water line connectors.



### An Emergency Source of Water

- 1) Shut off the valve that leads to the hot water heater immediately after the emergency to prevent the water from becoming

contaminated.

- 2) Cut off the water heater's electrical or gas supply for your own safety and to prevent the water heater from running without water.
- 3) Allow the water inside the heater to cool before you attempt to drain any water from it.
- 4) Disconnect the hot water line at the top of the tank. Turn on a hot water faucet in the house to ventilate the water heater's tank if you can't get the line off.
- 5) Open the drain valve at the bottom of the tank and collect the water in a clean storage container. Check the first few gallons for rust and sediment. Throw dirty water out until clean water starts to drain.
- 6) Refill the tank before turning the gas or electricity back on. A professional will be needed to turn the gas back on if turned off.

## Utilities Safety

Earthquakes, severe storms, flooding and other disasters can damage your utility lines. Know where your home's main utility controls are located, and when and how to turn utilities off.

### Water:

Turn off water at the main meter or at the water main leading into your house. This prevents contaminated water from entering your water heater and plumbing.

- To turn off the valve - turn to the right. In order to turn the valve, you will need a special valve wrench, which you may already have in your home or can be purchased from a hardware store.

### Sewer system:

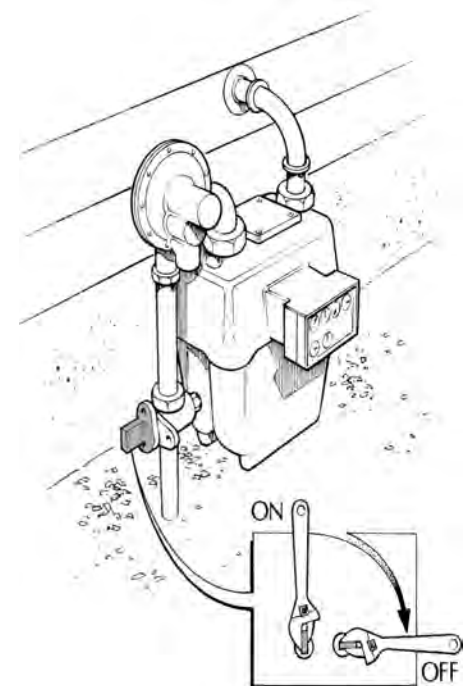
After a disaster, make sure your sewer system is in proper condition before using it. This will prevent contamination of your home and your drinking water supply.

- If pipes are damaged, the main water valve should be turned off. Check with authorities before using any water.
- Do not flush toilets until you are sure that sewage lines are functional.

### Gas:

Locate your gas meter and valve. Have a wrench readily available for turning off the gas supply.

- If you smell natural or propane gas, shut off the gas and evacuate the area immediately. Go to an area where you can no longer smell gas and reduce the chances of an explosion by not using matches, lighters, open flame appliances or anything that can give off a spark.
- Shut off the gas ONLY if you smell gas or a hissing noise. Contact your gas company to turn the gas back on.



For more information and videos about how to turn off your home utilities, visit: <https://mil.wa.gov/uploads/pdf/Publications/lean%20utility%20safety.pdf>

# WHAT TO DO IN DISASTER EVENTS

## Earthquake

Natural disasters such as floods, fires, earthquakes and windstorms affect thousands of people every year.

Some of the things you can do to prepare for the unexpected, such as assembling a supply kit and developing a family emergency plan, are the same for all types of hazards. However each emergency is unique and knowing the actions to take for each threat will impact the specific decisions and preparations you make. By learning about these specific threats, you are preparing yourself to calmly respond in an emergency.

Though earthquakes are unpredictable they have a high chance of occurring during your lifetime in Washington State. To be prepared for an earthquake there are some simple steps to remember during and after the event that could save your life and the lives of those around you.

### What to do during an earthquake:

If you feel the ground start to shake, “**Drop, Cover and Hold.**” **DROP** to the ground; take **COVER** by getting under a sturdy table or other piece of furniture; and **HOLD ON** until the shaking stops. If there isn't a table or desk near you, cover your face and head with your arms and crouch in a corner of the building, running may put you in danger of breaking windows, falling debris from ceilings, or unsecured heavy objects.

### If you are indoors:

- Stay away from glass, windows, outside doors and walls, and anything that could fall, such as lighting fixtures or furniture.

- Do not stand in a doorway except if you know it is a strongly supported, loadbearing doorway and it is close to you. Many inside doorways are lightly constructed and do not offer protection.
- Stay inside until the shaking stops and it is safe to go outside. Do not exit a building during the shaking. Research has shown that most injuries occur when people inside buildings attempt to move to a different location inside the building or try to leave during an earthquake.
- DO NOT use the elevators.
- In a crowded store, do not rush for exits and move away from display shelves containing objects that could fall.
- If in the kitchen, move away from the refrigerator, stove, and overhead cupboards in case they tip over or items in them spill out.

### If you are outdoors:

- Move to a clear area and stay away from trees, signs, buildings, or downed electrical wires and poles.
- If you are on a sidewalk near buildings, duck into a doorway to protect yourself from falling bricks, glass, plaster, and other debris.
- If you are in a wheelchair remain in it. If possible, move to cover, lock your wheels, and protect your head with your arms.

### In the car:

- Stop as quickly as safety permits and stay in the vehicle. Avoid stopping near or under



buildings, trees, overpasses, and utility wires.

- Proceed cautiously once shaking has stopped. Avoid roads, bridges, or ramps that might have been damaged by the earthquake.

### After the earthquake—**Recover**

- If there are small fires in your home or neighborhood, put them out and call for help.
- Shut off power at the main breaker switch if there is any

damage to your home's wiring. Leave the power off until the damage is repaired.

- Unplug any appliances that have broken lights or any damage; they could start fires when the electricity is turned back on.
- If you see any downed power lines in or near your neighborhood, consider them energized and keep away from them.
- Beware of items falling out of cabinets or shelves when you open them.
- Stay away from chimneys or walls made out of brick or block. During an earthquake they may become weakened and could topple during aftershocks. Do not use a fireplace with a damaged chimney; it could start fires or let in poisonous gases in your home.
- If safety personnel tell you to evacuate, do so. Wait until you are told it is safe before returning home.
- Be careful entering and exiting buildings. Stay away from downed power lines.
- Try to contact your out-of-area phone contact.
- Do not drive unnecessarily.

### IF YOU ARE TRAPPED UNDER DEBRIS

- Do not light a match or lighter in case of gas or chemical leak.
- Do not move about or kick up dust. This will affect your breathing and visibility.
- Cover your mouth with a handkerchief or clothing.
- Tap on a pipe or wall so rescuers can locate you. Use a whistle if one is available. Shout only as a last resort. Shouting can cause you to inhale dangerous amounts of dust.

For more information on specific hazards, visit the Ready website at: [www.ready.gov](http://www.ready.gov)

# WHAT TO DO IN DISASTER EVENTS

## Minimizing Flood Damage

**F**looding is one of the most common hazards in Mason County, especially because the Skokomish River is the most flood-prone river in the state of Washington. Flooding can range from a scale of a few neighborhoods to an entire county or multi-jurisdictional extent. Flooding is possible anywhere, but most notably in low-lying areas near water or downstream from dams and water reserves. Below are steps to help prevent flood damage and keep you and your family safe.

### Before a flood

- When moving into a new residence or building a new home, avoid buying, renting, or building in low-lying areas or in floodplains unless you elevate and reinforce your home.
- Make sure utilities and appliances such as furnaces, water heaters, and electric panels are elevated higher than flood levels in your area.
- Install check valves in sewer traps to prevent water and sewage from backing up into your home.
- Make sure basements are sealed with waterproofing compounds to reduce damage.
- Buy flood insurance (also includes tsunami flooding). There is a 30 day waiting period so do not delay.
- Implement home installments like rain barrels, storm drains, and depression gardening to divert water from your home.
- Evacuate if given early warning or relocate temporarily if you have a mobile home.

### During a flood

- Listen to weather radio or television for flood reports and updates.
- Move to higher ground or upper stories if there is a chance of flash floods or floodwaters entering your home.
- Turn off utilities and disconnect electrical appliances and equipment to reduce damage from electrical surges and utility failures.
- Avoid walking through water in case of fallen power lines and other hazards. If you must walk through water make sure it is still water, six inches of moving water can make you fall. Use a stick to move around and feel for water depth and debris.
- Do not drive in floodwaters; six inches of flowing water can move a car and cause loss of control. Half of all fatalities are vehicle related.

### After a flood

- Return home only if reported safe by officials.
- Listen to news reports and updates, including if the community's fresh water supply is safe to drink.
- Avoid walking in flooded areas. Stay away from and report downed power lines.
- Be careful on wet roads, especially if driving. Floodwaters may have weakened them.
- Repair damaged septic tanks and leaking systems to reduce health problems.
- Clean and disinfect everything wet to reduce chances of mold growth.

### Mold clean-up

Standing water and wet materials are attractive places for potentially hazardous microorganisms such as viruses, bacteria, and mold. Mold can cause disease, allergic reac-

tions, and can spread and continue doing damage long after flood waters recede.

- Open all of your doors and windows; do not open doors and windows if humidity is higher outside than it is inside.
- Open all drawers, closets and cupboards. This will ensure air flow to areas at risk to mold accumulation.
- Use fans, window air conditioners, and dehumidifiers to air out area and reduce mold growth.
- Buy moisture absorbers, such as a bucket of salt, from hardware stores. Leave in areas at risk for mold growth.
- Throw away wet items if not dry after one or two days to reduce chance of mold growth.
- When sanitizing use strong cleaners such as bleach with a 1-10 ratio of liquid bleach and water for an effective disinfectant.



### Flood insurance

- Flood insurance is available in most communities through insurance agents.
- A 30-day waiting period will go into effect before flood insurance activates, so don't delay.

Refer to FEMA or local emergency management to determine if your home is in a flood plain.  
[www.floodsmart.gov](http://www.floodsmart.gov)



# WHAT TO DO IN DISASTER EVENTS

## Wildfire

**W**ildfires are a natural process that benefits forest ecosystems. However, as more people are moving into or near forests wildfires can threaten lives and property. If you live in or near a forest or woodland setting, here are precautions you can take to protect your home and family from wildfires:

### What to do before a wildfire

- Create a fire safety zone around your home.
- All vegetation is fuel for a wildfire, though some trees and shrubs are more flammable than others. Remove vines from the walls of the house and clear the area of leaves, brush, evergreen cones, dead limbs and fallen trees. Instead, plant fire-resistant shrubs and trees such as hardwood trees which are less flammable than pine, evergreen, eucalyptus or fir trees.
- Create a Home Ignition Zone with 30-200 feet of space around your home. In this zone, cut back or eliminate brush, trees and

other vegetation near your home. This trimming will reduce or eliminate ignition hazards from vegetation.

- Regularly clean roofs, gutters and eaves of any debris that could have built up.
- If you have a chimney in your home, be sure to inspect and clean it at least twice a year.
- Mow your grass regularly.
- Stack firewood at least 100 feet away from your home.

### When wildfire threatens

- If you are advised to evacuate, do so immediately. Bring your disaster supply kit and carefully choose a route away from the fire.
- Use your out-of-area contact to tell someone where you are going and when you left.
- Put on protective clothing to protect your face, body and lungs.
- Prepare a note to post at your home that tells when you left and where you are going.

### How to create a “fire safety zone” around your home

All vegetation is fuel for a wildfire, though some trees and shrubs are more flammable than others. To reduce the risk, cut back or eliminate brush, trees and other vegetation near your home. In wooded areas especially, create a fire safety zone around your home.

#### **Create a 30-foot safety zone around the house:**

- Remove vines from the walls of the house.
- Move shrubs and other landscaping away from the sides of the house.
- Prune branches and shrubs within 15 feet of chimneys and stove pipes.
- Remove tree limbs within 15 feet of the ground.
- Thin a 15-foot space between tree crowns.
- Clear the area of leaves, brush, evergreen cones, dead limbs and fallen trees.



#### **Reduce flammables around all structures:**

- Install electrical lines underground, if possible.
- Ask the power company to clear branches from power lines.
- Stack firewood 100 feet away and uphill from any structure.
- Store flammable materials in approved safety containers and keep them away from the house.
- Keep the gas grill and propane tank at least 15 feet from any structure.

## Severe Windstorm

**W**indstorms occur often in Mason County, especially in the fall and winter. Winds can range between 45 and 65 miles per hour, creating flying debris and falling tree hazards. Widespread power outages can occur due to high winds along with damage to homes, businesses, and vehicles. Below are many ways to prepare your home and family in case of a windstorm.

### Before a windstorm

- Cut down any large branches of trees or older, unstable trees near your home.

- Create a family emergency kit.
- Purchase NOAA weather radio.

### During a windstorm

- Stay indoors and avoid forested areas with large trees as unstable trees can fall during windstorms.
- Move to basement or lower floors if possible and stay away from areas of the house near large trees.

### After a windstorm

- Wait until winds have calmed

down to leave home to avoid flying debris, falling trees and high winds.

- Avoid any downed power lines

or poles as they could electrocute you. Call the power company to come out and repair the poles.



# WHAT TO DO IN DISASTER EVENTS

## Severe Storms/Winterstorm

**W**inter storms are a common hazard in Mason County during the fall, winter, and early spring. These storms can last from hours to days and can cut off power to homes. Some basic steps to prepare your home and family are listed below.

### Before a Winter Storm

- Have an emergency kit prepared in case you need to leave home.
- Keep extra blankets and warm clothing in your home.

### During a Winter Storm

- Stay indoors- it can be hazardous to walk or drive outside in a winter storm.
- If the power is working, keep your home warm.
- If the power is out, use blankets and warm winter clothing to stay warm.

- **CAUTION-** using heating sources such as charcoal grills or fires indoors during a winter storm require ventilation to reduce CO2 in the air. CO2 is invisible, odorless, and a buildup of it in your home can fatally harm you and your family. If you do not have an unblocked chimney or form of ventilation **DO NOT** use a form of fire for a heat source.

### After a Winter Storm

- Wait until the storm has passed to exit your home.
- Be cautious driving on roadways as they can be icy and dangerous.
- Avoid downed power lines or poles because they can electrocute you.



**If a hazard lasts for an extended amount of time, text SHELTER and your zip code to 43326 (4FEMA) to find the shelter nearest you.**

## Power Outages

**L**oss of power is caused from severe weather as well as short circuiting. Because the loss of power is so unpredictable it is important to prepare your family and home prior to the event.

### Before the power goes out

- Have an emergency preparedness kit prepared in case you need to leave your home during power outage.
- If you are aware a power outage might happen temporarily, set refrigerator and freezer settings to coldest temperature; food can last up to 24 hours in an unplugged refrigerator unit, if the unit remains unopened.

### During a power outage

- Stay indoors, if possible, and wait until power comes back on to avoid any harsh weather or hazards outdoors.
- If you see a downed power line or pole, stay away and inform power the company of the location. Down lines and poles can cause electrocution.

### After a power outage

- Continue to avoid downed power lines or poles
- Turn on the circuit breaker then turn on the electronics.



**For more information:** [www.ready.gov/power-outages](http://www.ready.gov/power-outages)

# WHAT TO DO IN DISASTER EVENTS

## Landslides

Landslides are a frequent problem in Mason County. A landslide is the movement of rock, soil and debris down a hillside. It can move slowly and cause damage gradually, or move rapidly, destroying roads and buildings suddenly and unexpectedly.

Some areas prone to landslides in the county are North Shore Road, Highway 101 north of the Skokomish River, State Route 3 between Shelton and Mason Lake Road, and State Route 106 along the Hood Canal. Landslides in Mason County are associated with periods of heavy rainfall and snowmelt that can be increased in severity by earthquakes.

### What you can do before a landslide

- Plant bushes and shrubbery along steep slopes to increase soil stability.
- Building retaining and deflecting walls against steep slopes to reduce land movement. These projects will need an engineer.
- Some home insurance policies include coverage for debris



flows. Adding this policy to a home on or below a steep slope is one of the best ways to reduce financial impacts from a landslide.

### Landslide warning signs

- Doors or windows begin to stick or jam for the first time.

- New cracks appear in paint, plaster, tile, brick or foundation.
- Outside walls, walkways or stairs begin pulling away from the building.
- Underground utility lines break.
- Fences, retaining walls, utility poles or trees tilt or move.
- You hear a faint rumbling sound that increases in volume as the landslide nears.

debris flow such as cracking trees or cracking boulders.

- If you see debris flow, drive or run away; these flows often move quicker than you can walk.
- If you are caught in a debris flow, curl up in a ball and hold your head between your legs to protect yourself.

### What you can do during a landslide

- During heavy rain, stay alert and listen to the radio for warning about landslides and other hazards in the county.
- Be alert for noises that indicate

### What you can do after a landslide

- Help family and neighbors that have been impacted.
- Evacuate as soon as possible.
- Wait until the area is deemed safe to return.



For more information about landslides and how to protect your family, visit: <https://emd.wa.gov/emergency-management-division/hazards/landslide>

# WHAT TO DO IN DISASTER EVENTS

## Hazardous Chemical Spills

A major chemical emergency is an accident that releases a hazardous amount of a chemical into the environment. The extent of the accident depends on the amount spilled, the characteristics of the chemical, and the environment in which the spill occurred. These accidents can happen all of a sudden underground, on railroad tracks or highways, and at manufacturing plants. Chemical spills can result in a fire, explosion and water or soil contamination, which may lead to human health issues. Many times you cannot see or smell anything unusual. If you see any unusual activity or a potentially hazardous chemical spill, call 911.

If a chemical spill or other hazard occurs, authorities and officials will instruct people to either evacuate immediately or seek shelter where they are and seal the premises (shelter in-place). If authorities order you to remain in your home, office or school, follow these directions to shelter-in-place:

- Place dampen towels over cracks and doorways, tape around

windows and doors, and hang plastic sheeting over windows and vents to prevent toxic air and chemicals from entering your home.

- If you think you may have been exposed to a chemical, take off your clothes and put them in a sealed bag or container. If you know water and soap will not react with the chemical, take a cool or lukewarm shower (not hot).
- If you do have signs of a chemical reaction, call 911 immediately and follow their instructions.
- Listen to your radio or television to be informed about the type of hazard, effects of the hazard, area affected, how to protect yourself, evacuation routes, shelter and medical locations, and phone numbers for extra help.



## Terrorism Awareness

Local, state and federal law enforcement officials monitor suspected terrorist groups and try to prevent or protect against an attack. Report anything that appears suspicious or out of the ordinary by calling 911 or your local FBI office.

You can prepare for a terrorist incident by learning shelter-in-place procedures and preparing a sheltering kit (see section on creating an emergency supply kit). Shelter-in-place procedures are used for chemical or biological attacks, and even hazardous materials spills. If you feel an explosion nearby

immediately take cover, protecting your head with your arms; if you are inside a building leave as quickly and safely as possible. NEVER take an elevator if there is a fire; instead use a fire escape.

**For more information visit:**  
**FEMA:** <https://www.ready.gov/prepare-for-emergencies>  
**FBI:** <https://www.fbi.gov/investigate/terrorism>



# SHELTER-IN-PLACE

## How to Shelter-in-Place

If a chemical accident happens, authorities will instruct people to either seek shelter where they are, or evacuate. If ordered to remain in your home, office or school, follow these directions to “shelter-in-place.”

- Dampen towels and place over the cracks under doors.
- Cut plastic sheeting to fit over the windows and vents. Secure the plastic with duct tape.
- Tape around the door.
- Turn on the radio.

- Don't air out or leave your sealed shelter until you are told do so.

If you were outside before taking shelter and think you may have been exposed to a chemical agent, take off at least your outer clothes, put them in a plastic bag and seal the bag.

- If water is available, wash or take a cool to lukewarm shower, using only water. (Caution: in some cases water may make chemical burns and exposures worse, only apply water if you know it is safe to do so.)

- Don't use soap unless authorities advise you to do so; soap may react poorly with some chemicals.
- If you leave the area, tell emergency responders or medical staff at your destination you may have been exposed.
- Tell the emergency responders about the sealed bag so that they can arrange for its safe removal after the emergency.

### REMEMBER!

If you have symptoms of chemical exposure, call 9-1-1 immediately and follow their instructions.

1



**Go indoors immediately.**

2 **Close all windows and doors.**



3



**Turn off ventilation systems (heating and air-conditioning, and fireplace dampers).**

4



**Go into a room with the fewest doors and windows and seal the room.**

5



**Turn on your radio for information.**

6



**Stay in the room until told by the authorities that it is safe to come out.**

**For more information, visit: [www.ready.gov/chemical](http://www.ready.gov/chemical)**

# WATER AND FOOD SAFETY

## How to Purify Water for Household Use

**D**uring a disaster waterlines may burst, causing the public water source to become contaminated; you may not be able to drink your tap water. During a disaster, a public service announcement may be issued by a local or state official advising you to not drink the water. Knowing where you can retrieve water during a disaster and how to purify it can help you and your family prepare for a disaster and have a safe, reliable source of drinking and cooking water.

If you cannot draw water directly from you tap you can draw water from any of these sources:

- Water from your hot water tank
- Stored bottled water from your emergency kit

- Rain barrels located outside your home
- Rivers and creeks

### How to purify water

You can purify water in two ways - boiling and disinfecting. Before you purify water, always filter the water, including tap water and especially cloudy water, into a clean container. To filter water buy a portable water filter or create your own filtration system, using a clean funnel and coffee filters, clean clothes, cotton plugs, or paper towels as a filter. After filtering your water, purify it using one of the options below:

- **Boiling Water:** Boiling water is the safest option to purify water. Bring water to a rolling boil for 3-5 minutes, then let cool before drinking. Adding a pinch of salt to each quart may improve the taste.
- **Disinfectants:** Disinfecting water should be used when boiling water is not an option. When disinfecting water, add a

household liquid bleach such as Clorox or Purex to the water. Do not use bleaches that contain perfumes, dyes, and other additives.

Use the graph below to correctly and safely mix the right amounts of bleach and water being treated. Mix bleach and water thoroughly and let it sit for 30 minutes, or 60 minutes if the water is cloudy or very cold.

Treating Water with a 5-6 Percent Liquid Chlorine Bleach Solution		
Volume of Water to be Treated	Treating Clear/Cloudy Water: Bleach Solution to Add	Treating Cloudy, Very Cold, or Surface Water: Bleach Solution to Add
1 quart/1 liter	3 drops	5 drops
1/2 gallon/2 quarts/2 liters	5 drops	10 drops
1 gallon	1/8 teaspoon	1/4 teaspoon
5 gallons	1/2 teaspoon	1 teaspoon
10 gallons	1 teaspoon	2 teaspoons

## Food Safety

**I**n the event of a disaster, food can become contaminated and spoiled. The most important thing to remember is “WHEN IN DOUBT, THROW IT OUT!” Contaminated foods, even the tiniest amount can cause significant health problems to you and your family members. Here are suggestions for keeping food safe in particular hazards.

### Keeping food safe in power outages

- Have dry and/or frozen ice on hand to prepare for a power outage, and know where you can get ice if you have a short supply. 50 pounds of dry ice can keep a full 18 cubic foot freezer cold for 2 days. Refrigerators can usually keep cold for 4 hours and a full freezer for 48 hours or

24 hours for a half full freezer.

- Have coolers with ice to store frozen and perishable goods if power is out for more than 4 hours.
- Discard perishable foods (meat, poultry, dairy) after 4 hours without power or after you have run out of ice to put into coolers.
- Have a thermostat to put in your refrigerator and freezer to keep track of temperatures. Refrigerators should be 40°F or below and freezers should be 0° or below.
- Grouping food in the freezer helps food stay cold.
- Keep refrigerator and freezer doors closed unless it is necessary to retrieve food items.

### Keeping food safe during floods

- Do not eat ANYTHING that has contacted flood water.
- Discard cans that are damaged in any way such as being bent, cracked, open, or bulging.
- Boil undamaged canned goods and eating/cooking ware for at least 2 minutes, or soak in a solution of water and household liquid chlorine bleach for 15 minutes. Use 1 tablespoon of liquid bleach for each 1 gallon of water.
- Remove labels and wrappings from cans and other food products, these may contain dirt and bacteria.
- Sanitize food preparation surfaces with a bleach solution.

### Keeping food safe after a fire

- Extreme heat and toxic smoke can spoil food and damage canned, boxed goods, and cooking ware. Discard raw foods not kept in the refrigerator, damaged cans, food in cardboard, and food in bottles with screw-on tops.
- Use boiling water or bleach-water solution as described above to clean cooking ware and undamaged cans.



# HELPING YOUR BUSINESS REBOUND SUCCESSFULLY FROM A DISASTER

## Business Continuity Planning

Resuming business after a disaster depends on planning and preparedness measures taken before a disaster strikes. According to the Institute of Business and Home Safety one out of four businesses do not reopen their doors after a major disaster. Developing a business continuity plan and taking proactive steps to prepare your business for disasters will reduce this risk and increase the chance that your business will operate during, or shortly after, a disaster occurs.

Here are some suggested steps that your business can take to increase business continuity, including actions for specific hazards:

### Employers:

- Educate employees of potential hazards.
- Develop plans and evacuation

routes and practice with employees.

- Establish one or more shelter areas inside the business in case authorities ask you to “shelter in place”.
- Select an employee to act as a spokesperson to the media and public information.
- Create a phone tree and select an employee to head communications in the event of a disaster.
- Select an employee to be in charge if manager is unavailable.
- Maintain a list of employee contacts.
- Keep employees updated on work status.
- Plan for employees with functional needs such as physical or mental disabilities,

elderly, and children.

### Customers:

- Keep an off-site record of your customers.
- Establish possible alternative worksites or business premises to connect to customers in the event of a disaster.
- Keep your customers updated on business status and operations.

### Suppliers:

- Keep an off-site record of suppliers and their contact information.
- Establish a list of alternative suppliers.
- Keep your suppliers updated on business status and operations.

### Equipment:

- Establish an inventory of all your equipment.

- Establish an equipment maintenance schedule and a contact list of manufacturer and service providers.
- Have a backup energy source such as backup generators.

### Property:

- Maintain your building to local fire and building codes.
- Make sure all employees know where utility shutoff valves are located and how to turn them off.

### Records:

- Back up all your computer files and make copies of important paper documents; keep copies off-site.
- Document the processes essential to your business’ operations and functions such as answering phones, tracking finances, and product distribution.

## Helping Children Cope with Trauma

Following a disaster, children may react differently than adults. Some children may never show distress while others may become upset several weeks or even months after a disaster. Whether or not children show a change in behavior, they may still need your help. Children who experience an initial distressing event before 11 years old are three times more likely to develop mental or emotional symptoms than those who experience their first distressing event later. Children are able to handle a distressing event better if parents and family can help them with their experiences, starting as soon as possible after the event. Here are some ways you can help your child or family member:

- At all ages: Children manage the distressing event based on parental actions. Go back to former routines as soon as possible. Maintain a regular schedule for the children.
- Infant to 2 years. Very young children do not have the ability to describe their feelings so they may become irritable and/or cry more than normal. It is important to soothe and calm them the best you can and reassure them everything is going to be okay.
- Ages 3 to 6: Reassure children that the disaster was not their fault. Assure fearful children you will be there to care for them; constantly reassure them. Talk with children about

how they are feeling. At this stage, the most common feelings are fear and insecurity. Assure them that it’s okay to have those feelings. Children should not be expected to be brave or tough. Tell them it’s okay to cry.

- Ages 7 to 10: Children this age may become very interested in

the details of the disaster and want to talk about it constantly. Don’t give children more information than they can handle about the disaster. At the same time, make sure the children are also getting accurate information about the disaster. Spend extra time with your children at bedtime.



# MASON COUNTY VOLUNTEER PROGRAMS AND SERVICES

## Mason County Community Emergency Response Team (CERT)

Mason County CERT is seeking individuals who want to be better prepared for the hazards that threaten their communities. While the best source of help in an emergency is paid or volunteer professional responders, they may not be available to address immediate life-saving needs or to protect property. Individuals in the community, such as yourself, can help respond and assist in emergencies.

The Mason County CERT program provides free emergency preparedness and response training to individuals, community groups, schools, and businesses so they can help themselves, their

families, neighbors and co-workers during a major disaster. Mason County residents are encouraged to get involved and receive training with CERT. With training and practice, you will know what to do and how to help people in a disaster. CERT members will support county responders by helping save lives and safeguarding property in your community.

**For more information on how you can join CERT, contact Mason County DEM at 360-427-7535 or email [mcdem@co.mason.wa.us](mailto:mcdem@co.mason.wa.us)**



## Mason County Disaster Animal Rescue Team (DART)



Mason DART seeks community volunteers who are ready to assist with sheltering and protecting pets, livestock and other animals during disasters. Mason DART provides rapid, coordinated response—after activation by Mason County Division of Emergency Management—to any emergency

any time when animals are involved. Mason DART conducts training programs, drills and meetings to develop team skills in order to provide proper and effective assistance to animals and their owners in difficult, stressful or dangerous situations. Expertise is not required—just a desire to help and protect animals in distress, a

willingness to give of your time and talent, and a readiness to properly assist others during a crisis in our area.

**For more information on how you can join DART, contact Mason County DEM at 360-427-7535.**

## Mason County Communication Support Team (CST)

Residents with an interest in providing vital emergency communications support during a disaster situation, should consider volunteering with Mason County CST. Mason County CST is an organization of dedicated licensed amateur radio volunteers with non-licensed volunteers in support roles who provide essential radio communications in support of Mason County agencies during times of emergencies. Because of

the seriousness of the team mission, members should be mature, willing to commit time, and be able to respond quickly if contacted by the Mason County Department of Emergency Management. Members are expected to participate in training and exercises on a regular basis, and be available to respond to actual disasters when needed.



**For more information on how you can join CST, contact Mason County DEM at (360) 427-7535. Mason County CST meets the last Tuesday of every month at 3pm at the Mason County Public Works Facility, 100 W. Public Works Dr., Shelton.**

# MASON COUNTY VOLUNTEER PROGRAMS AND SERVICES

## Mason County Emergency Operations Center (EOC)

Mason County EOC seeks community volunteers to assist the Mason County Department of Emergency Management Director during times of emergencies by maintaining communications with other county agencies, the Washington State EOC, and other county EOCs using phones, radios and computers. EOC volunteers maintain and file incident activity logs, records, receipts, and perform other administrative duties as required.

Depending on the specific EOC assignment, volunteers may interact with various agencies and officials, members of the general public, or the media. After a potential EOC volunteer has passed a Background Check all necessary disaster-specific training will be provided to the volunteer.



## Mason County Critical Incident Stress Management (CISM) Team



The focus of the Mason County CISM program is to minimize the harmful effects of a crisis and support the efforts of emergency services personnel. The CISM team provides debriefing services to emergency response personnel following critical incidents. Confidentiality and respect for the individuals involved are the highest priority for the team. In addition to debriefings, the CISM program also provides pre-incident education, on-scene support, post incident defusing and demobilization to emergency services personnel. The

Mason County CISM team is comprised of professional and volunteer responders from the emergency services, medical community, education and mental health professionals, all of whom will be specially trained in Critical Incident Stress Debriefings, aspects of acute trauma, and disaster recovery, and the basic standards of peer support.

## Mason County Explorer Search and Rescue (ESAR) Team

Mason County's ESAR Team is looking for community volunteers who want to learn lifesaving skills and help protect the people of Mason County. The Mason County ESAR is the primary Ground Search and Rescue response unit in the county. ESAR responds to all land based Search and Rescue operations in Mason County and other counties as requested. The team conducts

searches, low angle rescue operations and serves in a variety of other roles in support of the SAR effort. There are other specialized teams within the ESAR program such as a Mobile (4x4) SAR team, SAR Dive Team, Mounted (Horse) SAR team, and the Base Support Team. ESAR is open to volunteers age 14 and up, who after passing a Background Check will then receive training in search tactics, first aid/

CPR, survival, wilderness navigation and radio communications, as well as other subjects.

To get involved with Mason County Explorer Search and Rescue, go to:  
<http://www.masoncountysar.org>



# MASON COUNTY VOLUNTEER PROGRAMS AND SERVICES

## Medical Reserve Corps (MRC)

**T**he Mason County MRC is a community-based program that is seeking local volunteers to respond to local emergencies and disasters. MRC volunteers are professionals who contribute their unique skills and expertise to help local residents. Volunteers are provided with training to help prepare them for the roles and tasks they may be asked to do during an emergency. Many MRC volunteers are licensed health care

professionals. However, MRC volunteers can also include students, retirees and others who are committed to helping during a time of crisis.

**For more information about MRC, contact:  
Mason County Public Health Department  
Phone: 360-427-9670 ext 400**



## Mason County Division of Emergency Management

**M**ason County DEM is the lead agency responsible for identifying hazards, preparing for them, and helping the public prepare in Mason County. These tasks are accomplished via hazard mitigation as well as preparation and response planning done in

partnership with city/county agencies, tribal governments, regional and state level partners, non-profit entities, schools, and the private sector. DEM also coordinates the county training and exercise program, the emergency volunteer program, and requests federal grant funds to support

mitigation and recovery activities in the county.

When an emergency situation occurs, the County DEM establishes and manages the County Emergency Operations Center to provide first responders with the resources and information necessary to respond to any hazard

properly. Managing response and recovery operations involves a tremendous amount of information. The EOC's job is to collect this information and to manage and control event information and response activities.



# Mason County Important Phone Numbers

Place this list of important phone numbers where all members of your household can quickly refer to it.

## AREA CODE 360 UNLESS NOTED OTHERWISE

### MASON COUNTY EMERGENCY MANAGEMENT AGENCY

Shelton (Main office) ..... 360-427-7535  
 Belfair Area..... 360-275-4467  
 Fax.....360-427-7756  
 Website: [www.co.mason.wa.us/dem/index.php](http://www.co.mason.wa.us/dem/index.php)

### Public Health

Shelton ..... 360-427-9670 ext. 400  
 Belfair ..... 360-275-4467 ext 400  
 Elma ..... 360-482-5269 ext 400  
 Fax..... 360-427-7787  
 Website: [www.co.mason.wa.us/health/index.php](http://www.co.mason.wa.us/health/index.php)  
 Medical Reserve Corps: [www.co.mason.wa.us/health/medical\\_reserve\\_corps.php](http://www.co.mason.wa.us/health/medical_reserve_corps.php)

### Shelton City Hall

Main Office ..... 360-426-4491  
[www.ci.shelton.wa.us](http://www.ci.shelton.wa.us)

### Department of Public Works

Mason County.....360-427-9670 ext 450  
 Website: [www.co.mason.wa.us/public\\_works/index.php](http://www.co.mason.wa.us/public_works/index.php)  
 Shelton City.....360-426-9731

### County Commissioners Office

Mason County.....360-427-9670 ext 419

### Mason Co. Public Utilities District (PUD)

District 1 Office:..... 360-877-5249  
 Fax..... 360-877-9274  
 website: <http://mason-pud1.org>  
 District 3 Shelton Office: ..... 360-426-8255  
 Fax: ..... 360-426-8547  
 Website: <http://www.masonpud3.org/>

From Elma to Shelton, Toll Free: ..... 360-861-4247

From Belfair to Shelton, Toll Free: .....360-275-6518

Fax: ..... 360-275-6674

### Squaxin Island Tribe

Public Safety Department ..... 360-426-5222  
 Website: [www.squaxinland.org/government/departments/public-safety-justice/](http://www.squaxinland.org/government/departments/public-safety-justice/)

### Skokomish Tribal Nation

Department of Public Safety .....360-426-4740  
 Website: [www.skokomish.org/public\\_security](http://www.skokomish.org/public_security)

### Red Cross

South Puget sound Chapter (Mason, Thurston, Pierce, Lewis, & Grays Harbor counties.)..... (253) 474-0400  
 Website: <http://www.redcross.org/local/washington/chapters/south-puget-sound>  
 Kitsap and Olympic Peninsula Chapter (North Mason, Kitsap, Jefferson and Clallam counties) .....(360) 377-3761  
 Website: <http://www.redcross.org/local/washington/chapters/kitsap-and-olympic>

### Washington Emergency Management Division (EMD)

Website: [www.emd.wa.gov/](http://www.emd.wa.gov/) ..... 1-800-258-5990

### COMMUNITY EMERGENCY RESPONSE TEAM (CERT)

Website: <https://www.ready.gov/citizen-corps>

### POLICE, FIRE, OR MEDICAL EMERGENCY 911

**MACECOM Non-Emergency** ..... 360-426-4441

### Sheriff's Office

South County .....360-427-9670 ext 313  
 North County..... 360-275-4467 ext 313  
 West County..... 360-482-5269 ext 313  
 Jail Fax..... 360-427-9197

### Fire Districts

#1 Hoodspport (Volunteer).....360-877-5186  
 #2 / #8 North Mason Regional Fire Authority..... 360-275-6711  
 #3 Grapeview (Volunteer)..... 360-275-4483  
 #4 Arcadia/Kamilche .....360-426-7222  
 #5 Central Mason Fire and EMS.....360-426-5533  
 #6 Union..... 360-898-4871  
 #9 Skokomish Valley (Volunteer) .....360-427-7426  
 #11 Island Lake (Volunteer) .....360-426-1822  
 #12 Matlock (Volunteer).....360-426-4976  
 #13 Elma (Volunteer) ..... 360-482-4610  
 #16 Dayton (Volunteer).....360-426-7343  
 #17 Lilliwaup/Eldon (Volunteer).....360-877-5434  
 #18 Lake Cushman (Volunteer).....360-877-9882

### Mason General Hospital

Shelton (Main Hospital Campus) .....360-426-1611

**Harrison Medical Center-Belfair**..... 360-277-2975

Fax: ..... 360-277-2980

### FEDERAL EMERGENCY MANAGEMENT AGENCY (FEMA)


Federal Regional Center ..... 425-487-4600  
 Website: [www.fema.gov](http://www.fema.gov)

### NATIONAL WEATHER SERVICE

Seattle Forecast Office..... 425-487-4600  
[www.weather.gov/sew](http://www.weather.gov/sew) .....206-526-6087

### NATIONAL FLOOD INSURANCE PROGRAM (NFIP)

Website: [www.floodsmart.gov](http://www.floodsmart.gov)



### OUT OF AREA CONTACT PERSON

www.emd.gov
**WHY?** Local phone systems may be shut down in a disaster. However, you frequently can place a long-distance call.

Name (print): \_\_\_\_\_

Phone number (with area code): \_\_\_\_\_

Cell phone number (with area code): \_\_\_\_\_

**TIP:** You may be able to text message all your loved ones on your cell phone. Keep these messages short.