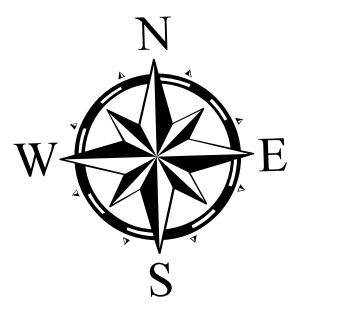
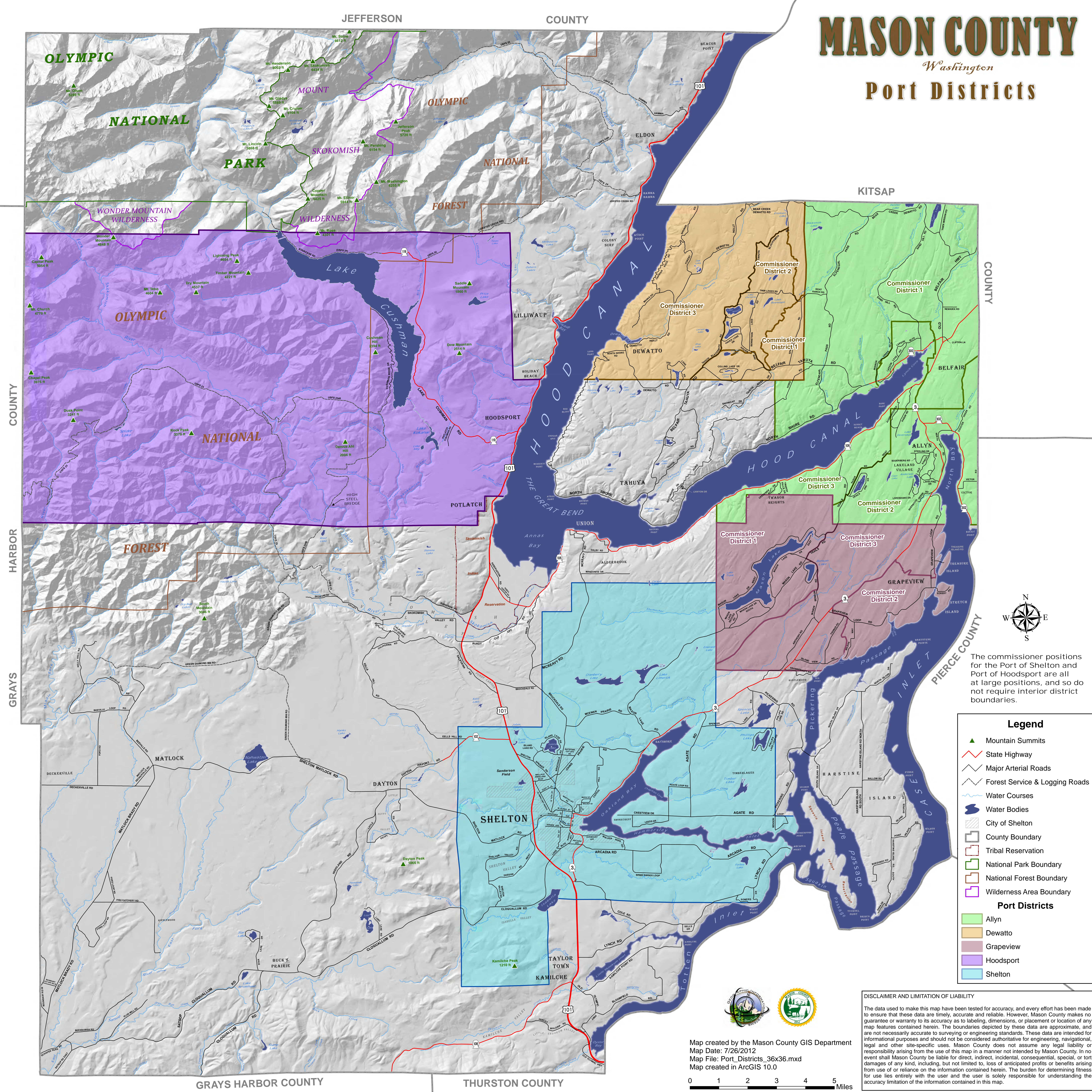


MASON COUNTY

Washington

Port Districts



The commissioner positions for the Port of Shelton and Port of Hoodspout are all at large positions, and so do not require interior district boundaries.

Legend

- ▲ Mountain Summits
- State Highway
- Major Arterial Roads
- Forest Service & Logging Roads
- Water Courses
- Water Bodies
- City of Shelton
- County Boundary
- Tribal Reservation
- National Park Boundary
- National Forest Boundary
- Wilderness Area Boundary

Port Districts

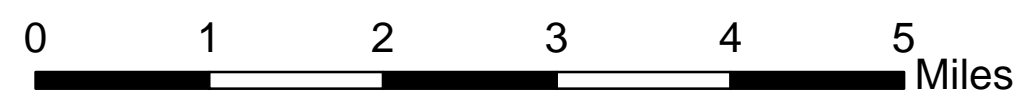
- Allyn
- Dewatto
- Grapeview
- Hoodspout
- Shelton



Map created by the Mason County GIS Department
 Map Date: 7/26/2012
 Map File: Port_Districts_36x36.mxd
 Map created in ArcGIS 10.0

DISCLAIMER AND LIMITATION OF LIABILITY

The data used to make this map have been tested for accuracy, and every effort has been made to ensure that these data are timely, accurate and reliable. However, Mason County makes no guarantee or warranty to its accuracy as to labeling, dimensions, or placement or location of any map features contained herein. The boundaries depicted by these data are approximate, and are not necessarily accurate to surveying or engineering standards. These data are intended for informational purposes and should not be considered authoritative for engineering, navigational, legal and other site-specific uses. Mason County does not assume any legal liability or responsibility arising from the use of this map in a manner not intended by Mason County. In no event shall Mason County be liable for direct, indirect, incidental, consequential, special, or tort damages of any kind, including, but not limited to, loss of anticipated profits or benefits arising from use of or reliance on the information contained herein. The burden for determining fitness for use lies entirely with the user and the user is solely responsible for understanding the accuracy limitation of the information contained in this map.



GRAYS HARBOR COUNTY THURSTON COUNTY