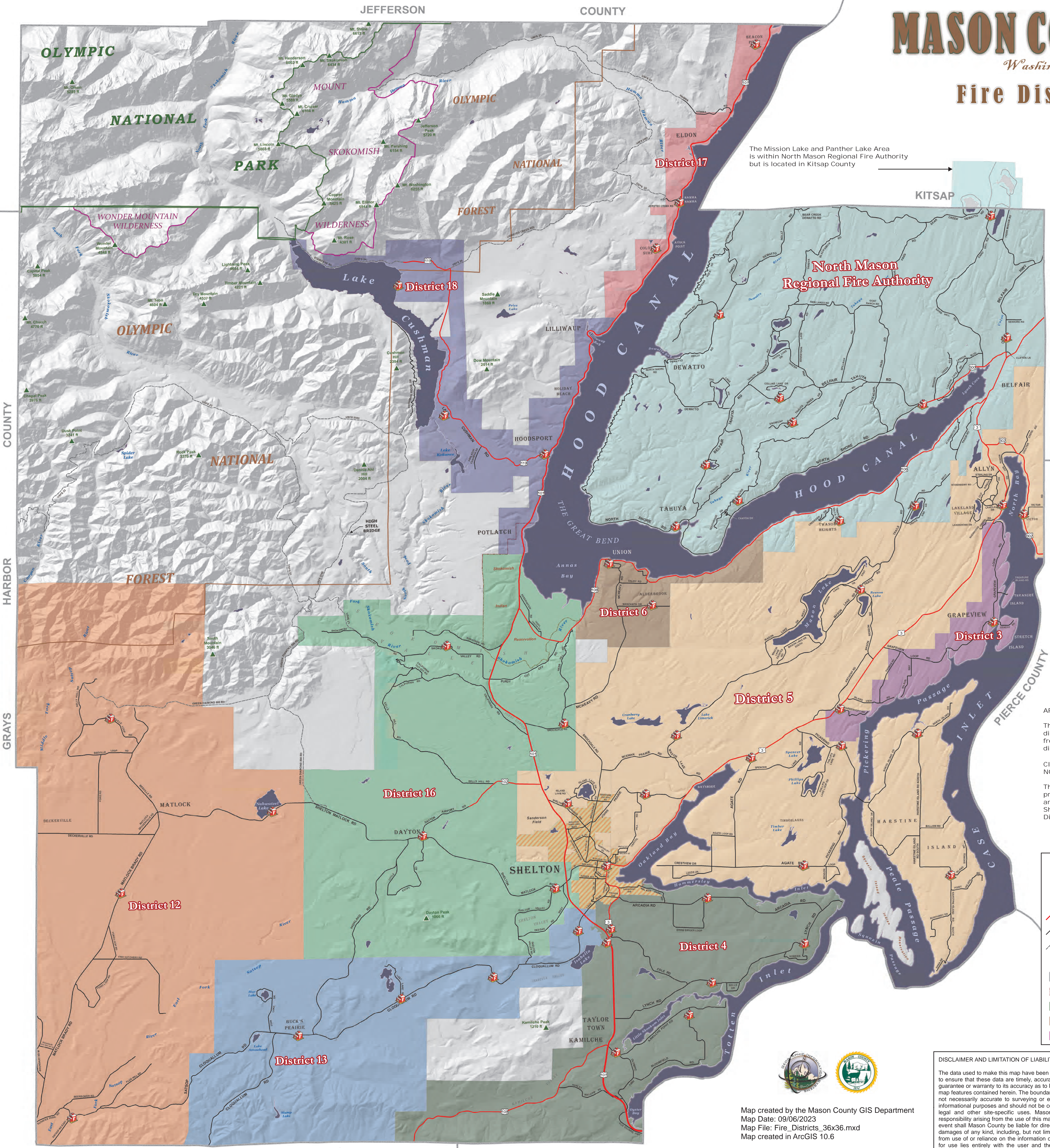


MASON COUNTY

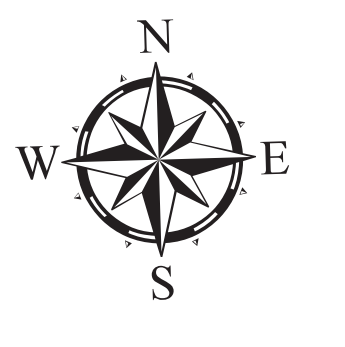
Washington

Fire Districts



The Mission Lake and Panther Lake Area is within North Mason Regional Fire Authority but is located in Kitsap County

North Mason Regional Fire Authority



AREAS OUTSIDE A DISTRICT NOTE:
 The areas outside of an established district (in gray), receive fire protection from various state, federal or local district sources.

CITY OF SHELTON FIRE PROTECTION NOTE:
 The City of Shelton receives fire protection from Fire District 5 through an Inter Local Agreement. The City of Shelton is not officially part of Fire District 5.

Legend	
	Fire Stations
	Mountain Summits
	State Highway
	Major Arterial Roads
	Forest Service & Logging Roads
	City of Shelton
	County Boundary
	Tribal Reservation
	National Park Boundary
	National Forest Boundary
	Wilderness Area Boundary



Map created by the Mason County GIS Department
 Map Date: 09/06/2023
 Map File: Fire_Districts_36x36.mxd
 Map created in ArcGIS 10.6



DISCLAIMER AND LIMITATION OF LIABILITY
 The data used to make this map have been tested for accuracy, and every effort has been made to ensure that these data are timely, accurate and reliable. However, Mason County makes no guarantee or warranty to its accuracy as to labeling, dimensions, or placement or location of any map features contained herein. The boundaries depicted by these data are approximate, and are not necessarily accurate to surveying or engineering standards. These data are intended for informational purposes and should not be considered authoritative for engineering, navigational, legal and other site-specific uses. Mason County does not assume any legal liability or responsibility arising from the use of this map in a manner not intended by Mason County. In no event shall Mason County be liable for direct, indirect, incidental, consequential, special, or tort damages of any kind, including, but not limited to, loss of anticipated profits or benefits arising from use of or reliance on the information contained herein. The burden for determining fitness for use lies entirely with the user and the user is solely responsible for understanding the accuracy limitation of the information contained in this map.

OLYMPIC NATIONAL PARK
 WONDER MOUNTAIN WILDERNESS
 OLYMPIC NATIONAL FOREST
 GRAYS HARBOR COUNTY
 THURSTON COUNTY

KITSAP COUNTY

PIERCE COUNTY

GRAPEVIEW

DAYTON

BUCK'S PEAK

KAMILCHE

ELDON

LILLIWAUP

HOODSPORT

POTLATCH

SHELTON

MATLOCK

BECKERVILLE

DAYTON

BUCK'S PEAK

KAMILCHE