



Introduction to *"The Partnership"*

Rick Goodemann – Chief Executive Officer
James Arentson – Architect

Who is the SWMHP?

OUR MISSION

Create thriving places to live, grow, and work through partnerships with communities.

Since 1992, the SWMHP has developed, financed or rehabilitated over 9,050 housing units with \$618,943,921 investments and have assisted over 6,500 new and existing homeowners with homeownership services.

PARTNERS & CUSTOMERS

are local governments, nonprofit organizations, individuals and families, especially people who are most in need.

SWMHP STAFF

includes 19 full time and 6 part-time employees, a 12 member Board of Directors and an active committee system with community volunteers.



Our Services & Products



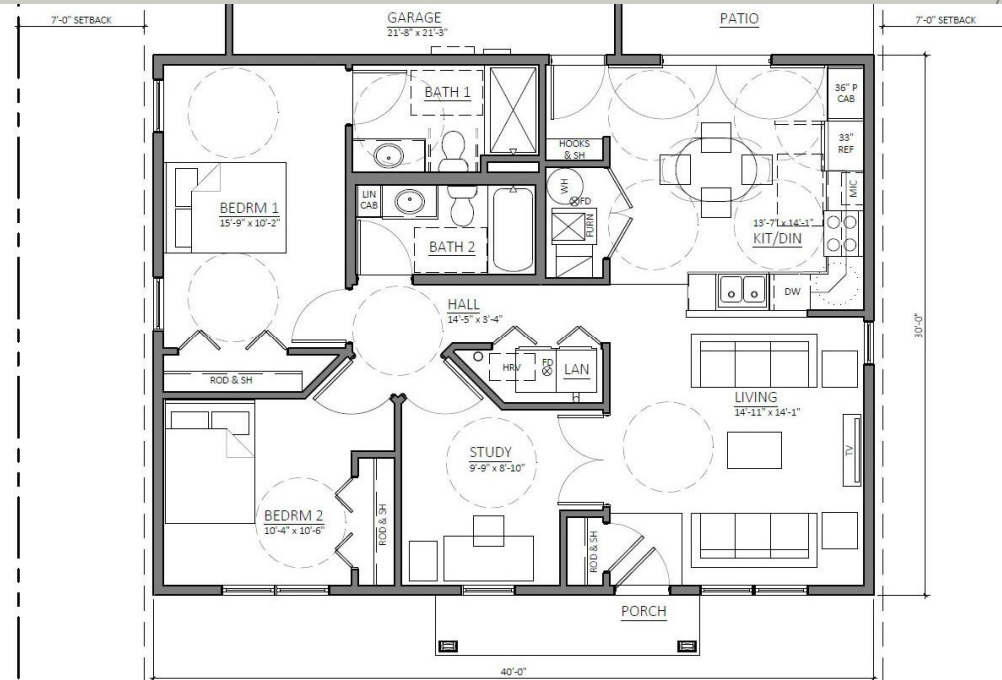
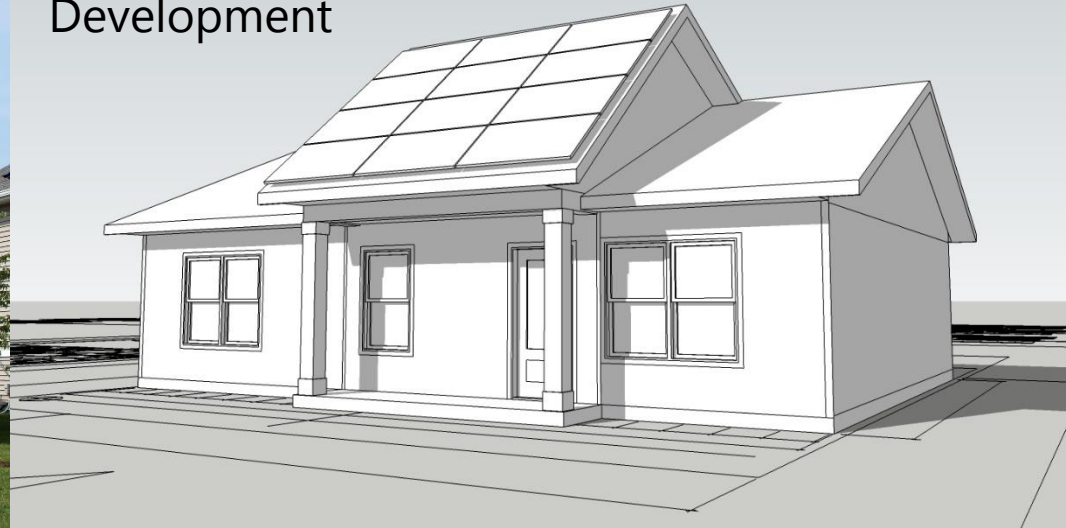
- Community Planning & Technical Assist.
- Homeownership Assistance
- Community Building & Engagement
- Land Development & Redevelopment
- Housing Preservation & Rehabilitation
- Single-Family Housing Development
- Multi-Family Housing Development
- Housing Assessments & Inspections
- Supportive Housing Services
- Community Design & Placemaking

Single-Family Development

17 new homes 2016-2017 – Saint Peter & Worthington



New model
Development



Multi-Family Development

Grand Terrace Apartments, 48 units - Worthington



Solace Supportive Housing – Saint Peter

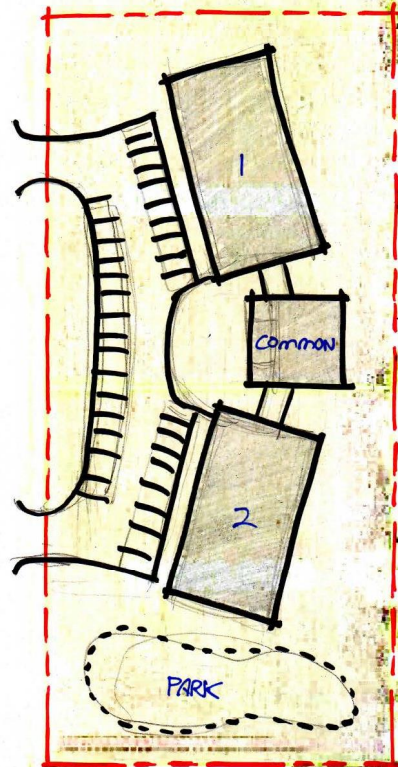
"Ending the Cycle" – Community for families and individuals beyond incarceration.



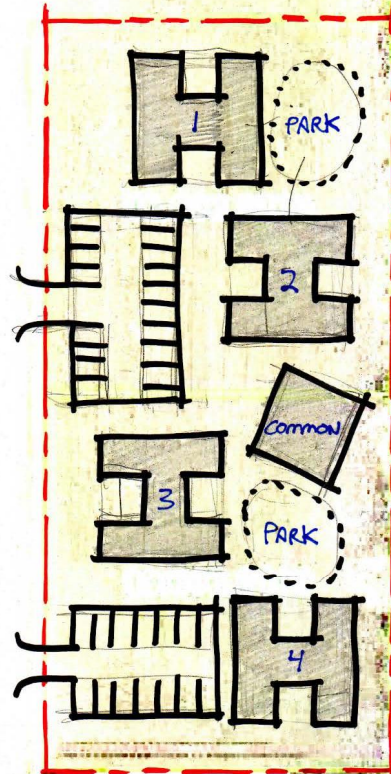
Southwest Perspective



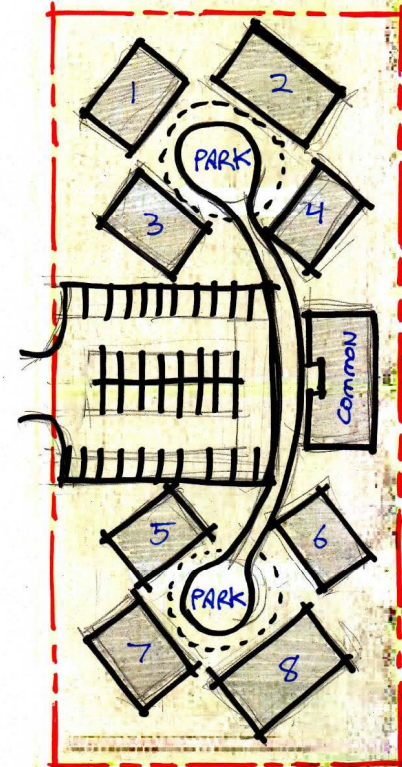
Solace Site Concept Planning



NORTH
SOLACE - CONCEPT 1
1" = 80'-0"



CONCEPT 2



CONCEPT 3

1-2 large buildings

4 medium buildings

8 small buildings

N
SCALE:
1"=40'

SOLACE SCHEMATIC SITE CONCEPT

APPROXIMATELY
1 ACRE EXTRA

PROPOSED PROPERTY LINE (3 ACRES)

GATE

FENCE

B. BALL
COURT

30
UNIT
BLDG.

PLAY
EQUIP

PLAY
FIELD

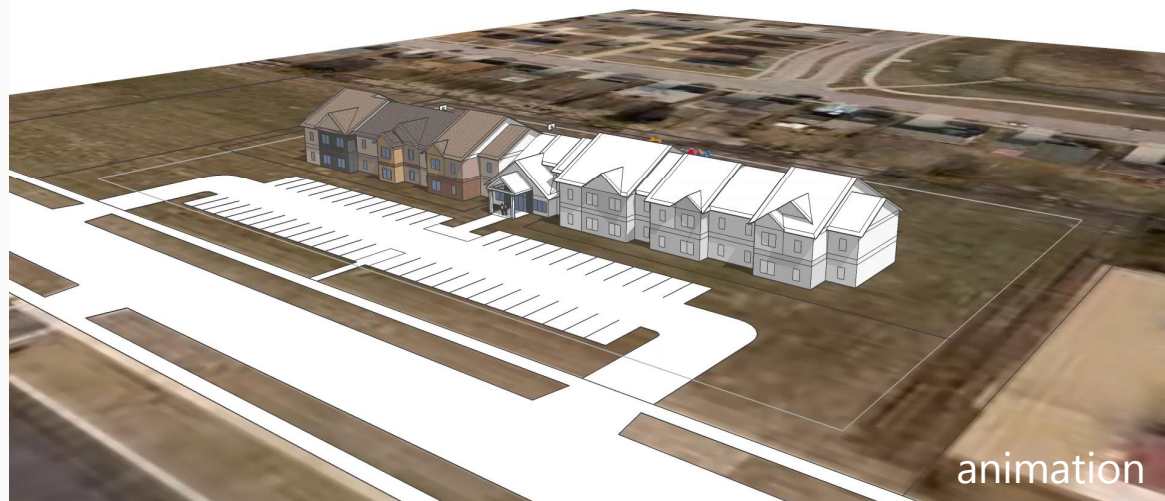
FENCE

PUBLIC UTILITY PROPERTY

GATE
EXISTING
FENCE

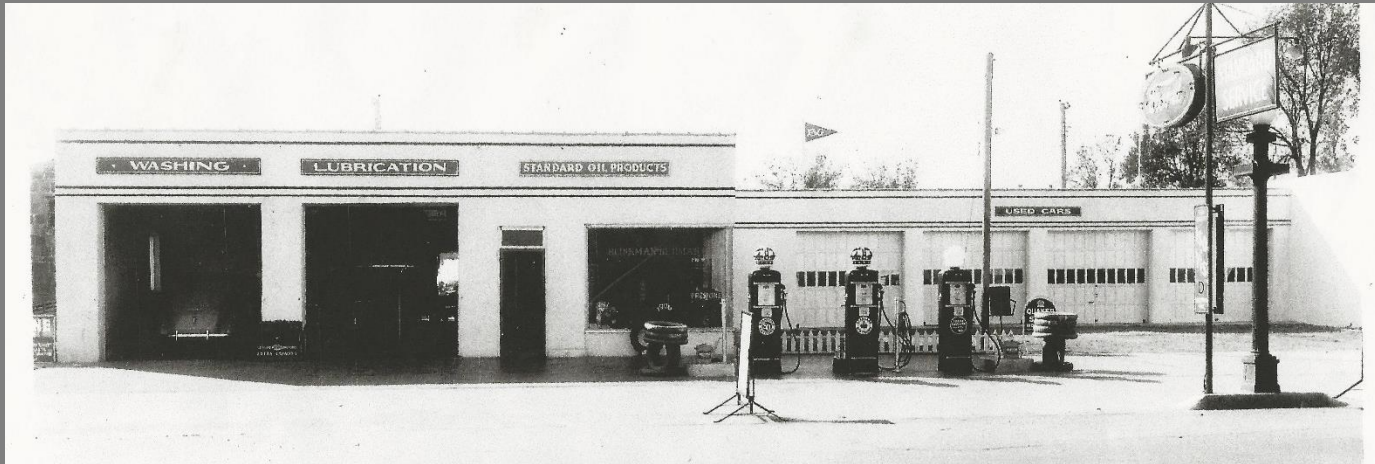
Solace Schematic Design

- 30 apartments + commons space
- Central "core" for community and supportive service spaces
- Outdoor play space and equipment - fenced for safety
- 50 parking spaces



Rock County History Center - Luverne

past



present



future



Rock County History Center - Luverne



Creative Community Development



Creative Community Development





"Thank you"
Questions?

Rick Goodemann – Chief Executive Officer
James Arentson – Architect