

PARKS & AMENITIES

Presented by Brad Swanson, Public Works Director
Duane Rader, Parks Superintendent





City of North Mankato

Incorporated in 1898



Past



Tanley Baseball Field – 1930s

Tanley Baseball Field was built on the corner of Monroe and Center Street. In 1940, the Ringling Brothers Circus performed in North Mankato at Tanley Field ballpark where Monroe Elementary School is now located. An all-time attendance for Ringling Brothers was set as 17,000 people viewed the circus in the afternoon and another 10,000 saw it at night.





1930s

Wheeler Park



1940s

- Wallyn Park - 1946
- South Avenue Playlot - 1947
- Spring Lake Park - 1949



1950s

- Roe Crest Park - 1959
- Langness Park - 1959





1960s

Tower Park



1970s

- Forest Heights Park – 1973
- King Arthur Park – 1974
- North Ridge Park - 1978





1980s

- Bluff Park - 1980
- Walter S. Farm Park - 1984
- Caswell Park - 1985
- Riverview Park - 1985

1990s

- Benson Park – 1997
- Centennial Park - 1998





2000s

- Pleasant View Park – 2001
- Lee Boulevard Rest Area – 2004
- Reserve Park - 2007

2010s

- Storybook Park – 2010
- Caswell Park North - 2013





2015 Parks Master Plan

The City of North Mankato

North Mankato Parks Master Plan

- The purpose of this document is to serve as the plan that advances a commitment to parks and outdoor recreation in North Mankato.
- This plan serves as an organizing document and platform for future park development that combines portions of the work completed by North Mankato Parks and Open Spaces Committee (2007-2010) and the present capital needs of the park system.
- This plan intends to communicate to the citizens of North Mankato the City's planned maintenance and infrastructure expenditures for the park system to advance the shared vision of what the park system will become.



Greenspace Conservation Management Plan

- Wetland Directive: Typical maintenance includes burning, mowing and spraying noxious weeds. The Benson Park wetland will be spot sprayed as needed and burned every 3-5 years.
- Scenic Overlook Directive: Trees along scenic bluffs shall be maintained or removed to provide optimum aesthetics.



Present

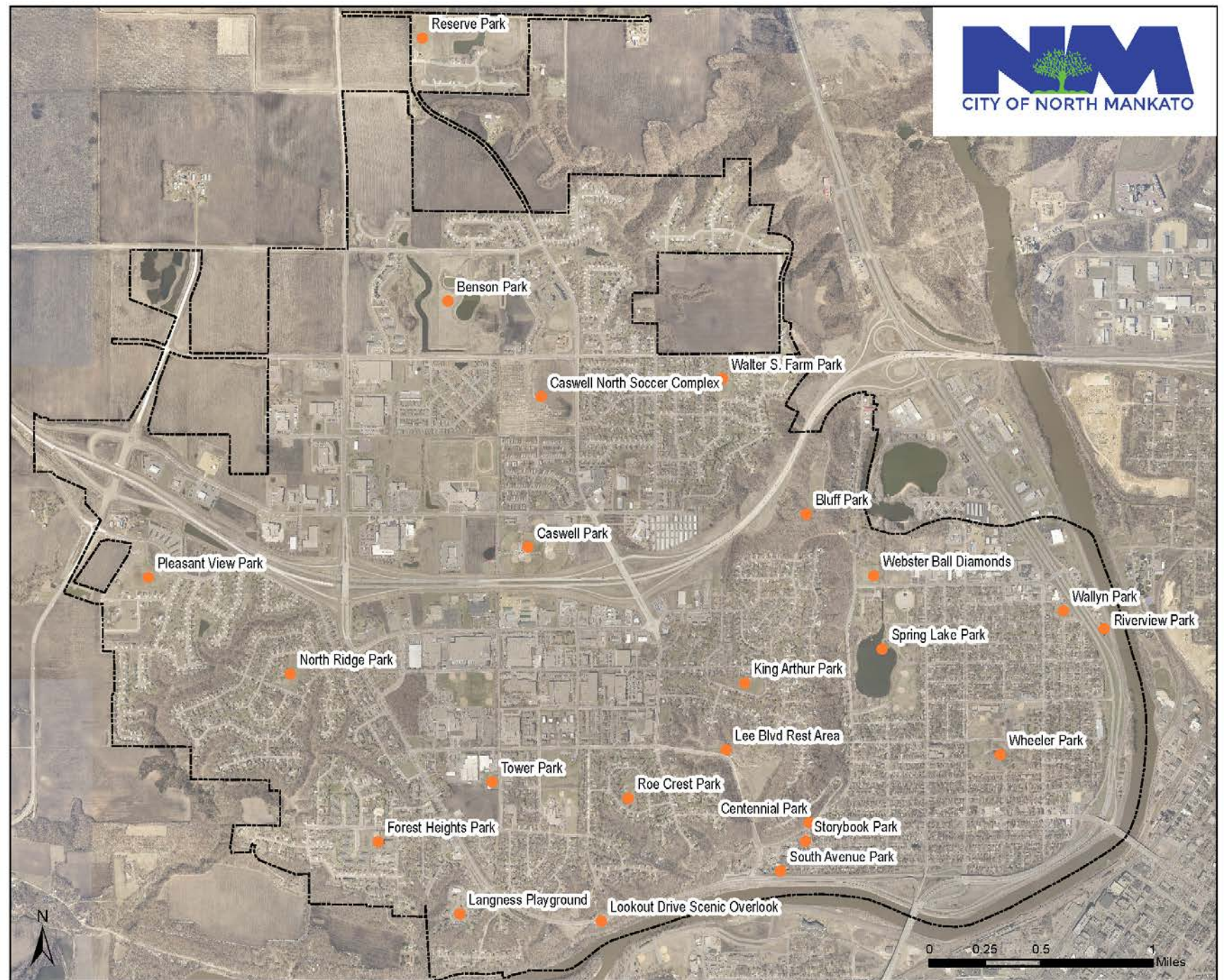


Parks Department Employees

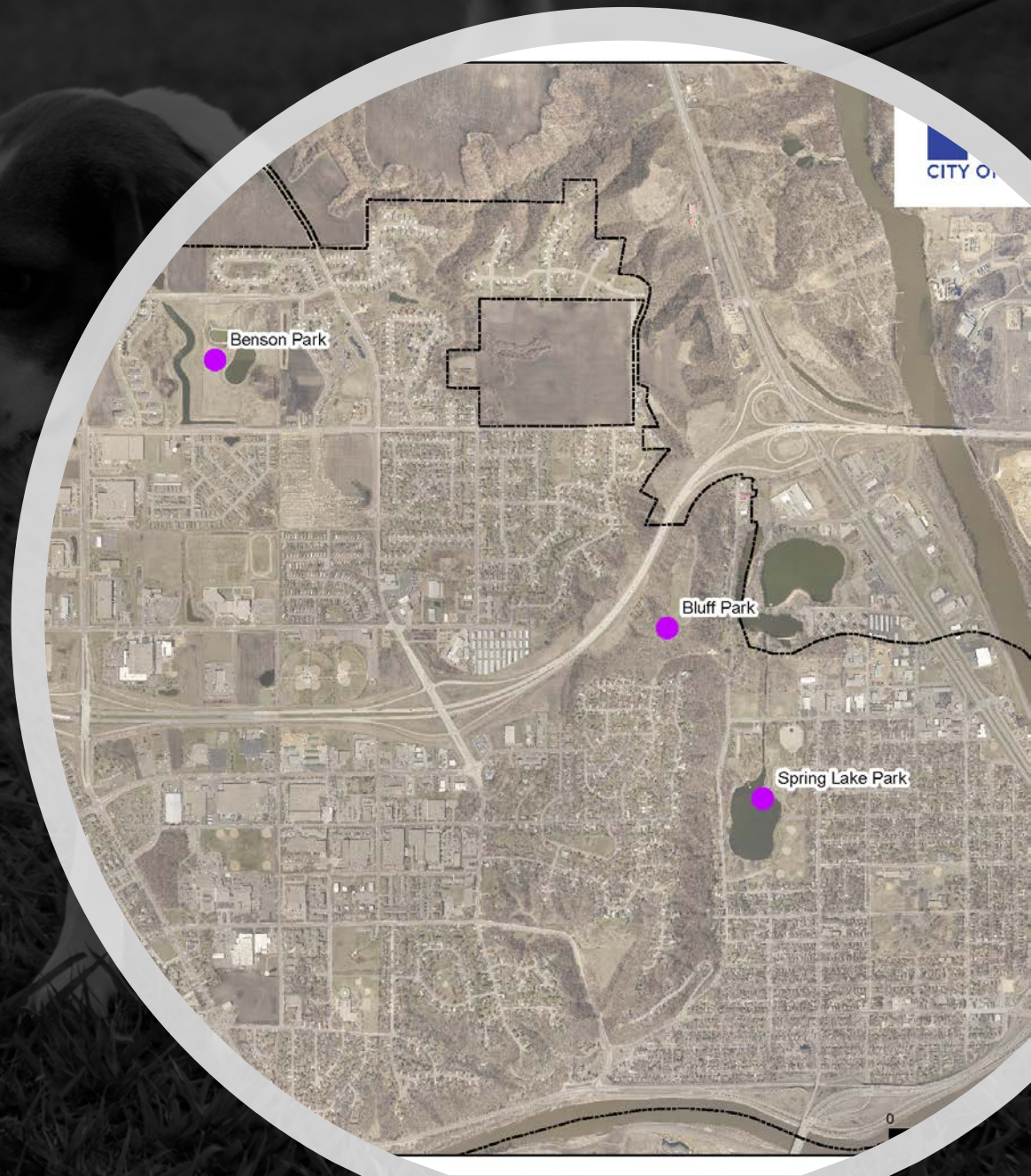
- Duane Rader – Park Superintendent
- Jason Lobitz – Park Foreman
- Phil Tostenson – Caswell Park Coordinator
- Roger Coyour – Park Maintenance and Caswell park Operations
- Dan Boswell – Park Maintenance
- Matt Wills – Park Maintenance
- Eric Hanson – Park Maintenance



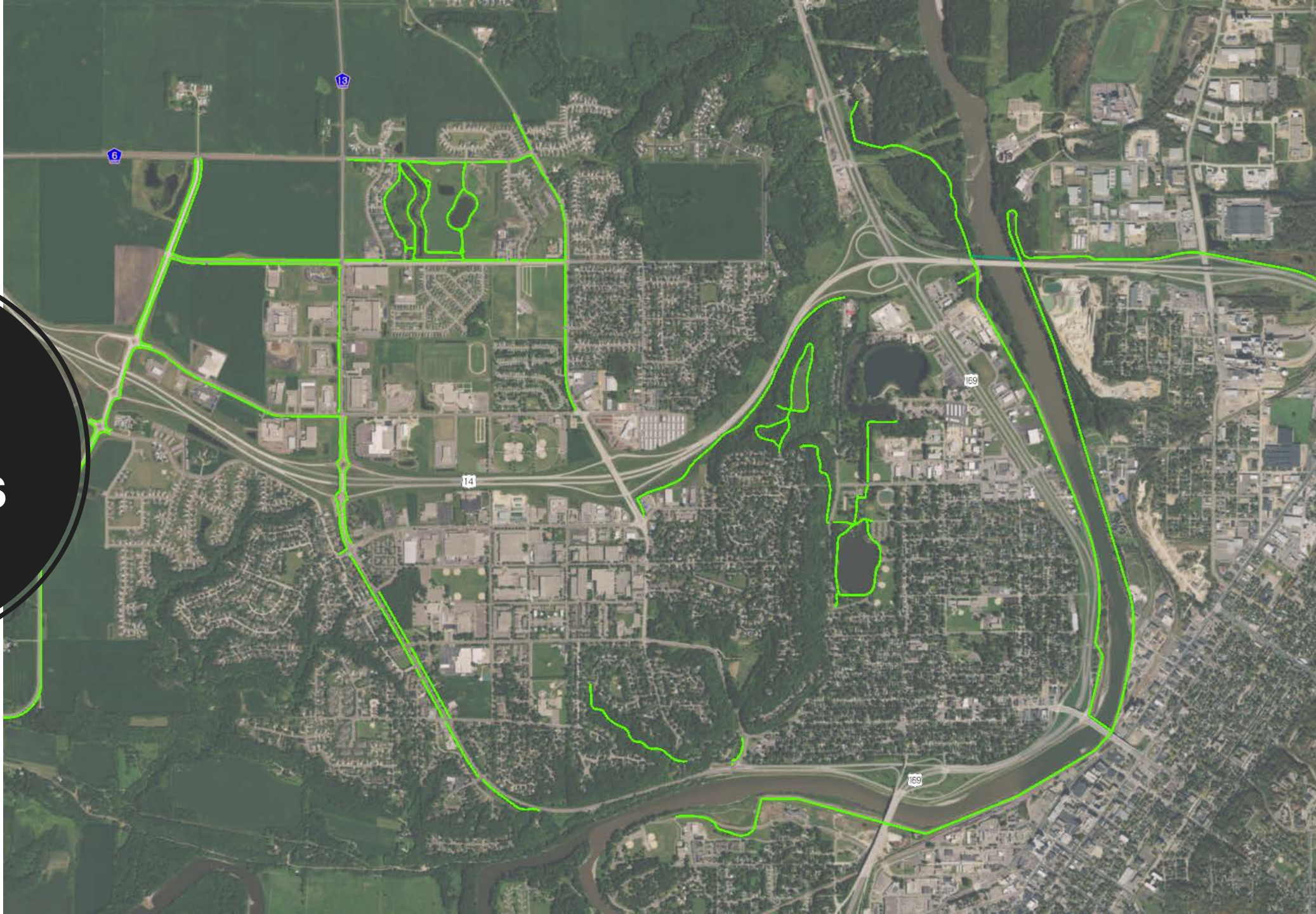
**The City
maintains over
250 acres of
parks and
greenspace.**



- **21 Parks**
- **3 Dog Friendly Parks**



**7 Miles
of Trails**





2 Prairies:
Benson Park
Bluff Park

Park Features

- 14 Structures
- 19 Playground Areas
- 20 Baseball Fields
- 9 Volleyball Courts
- 4 Tennis Court Sites, 8 Tennis Courts
- 12 Soccer Fields
- 9 Basketball Courts
- 6 Skating Rinks
- 5 Restrooms





Park Department Responsibilities

- Mowing and Trimming
- Park Shelter Reservations
- Trail and Sidewalk Snow Removal
- Trail and Sidewalk Sweeping
- Spraying
- Flowers and Planters
- Buckthorn Management
- Noxious Weed Management
- Skating Rink Maintenance
- Boulevard Trees (Removal and Trimming)
- Prairie Maintenance

Festivals

- Fun Days
- Anthony Ford Pond Hockey
- North Star Bike Festival
- Softball Tournaments
- Movies in the Park
- Business on Belgrade Events
- North Mankato Triathlon
- Rip Roar Triathlon
- Art Splash
- Music in the Park





Provide Greenspace to Local Groups

- Mankato United Soccer
- Somali Soccer Group
- Mankato Lacrosse
- Mankato Rugby
- MAGFA
- YMCA Youth Athletics
- YWCA Girls on the Run

Organization Involvement

- North Mankato Greenspace
- Master Gardeners
- DNR
- Mayors Monarch Pledge
- Sentence to Serve
- Boy Scouts
- Citizen Volunteers





Future

Walter S. Farm Comprehensive Plan





Wheeler Park Comprehensive Plan

BLUFF PARK

MASTER PLAN

LEGEND

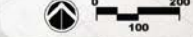
1. Parking Lot
2. Restroom Facilities
3. Existing Mary Lane/Lake Street Connector Trail

Fig. 1. Scenic Views

 Special Feature Location

 Picnic Facilities Location

Unpaved Trail-Woodland Path

 Paved Trail-Asphalt

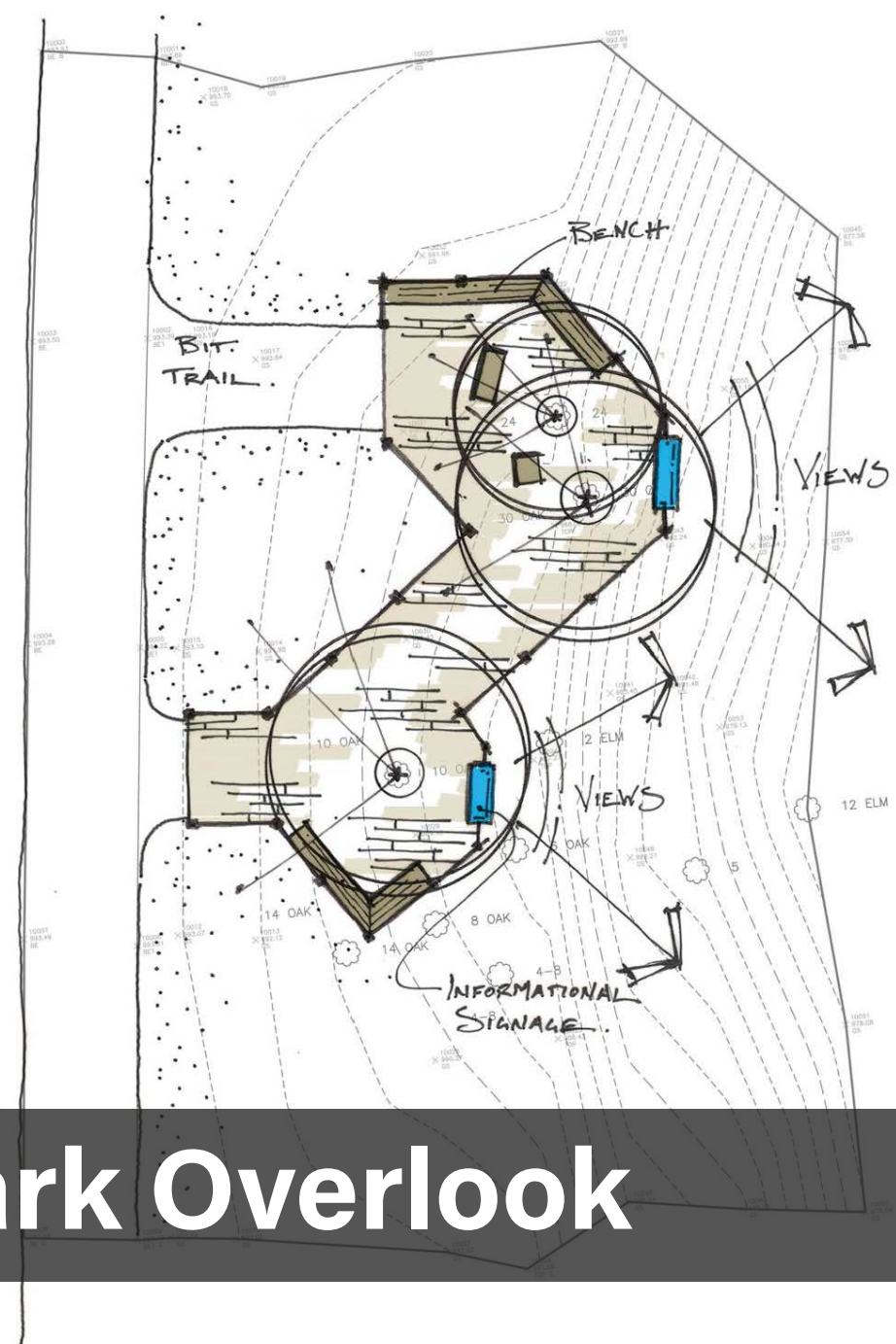
Legend:

- Special Feature Location
- Picnic Facilities Location
- Unpaved Trail-Woodland Path
- Paved Trail-Asphalt

Scale: 0 100 200

Map Labels:

- THE ASPEN GROVE FEATURES SCATTERED STANDS OF BIG TOOTH ASPEN TREES MIXED WITH NATIVE PRAIRIE VEGETATION
- SEATING NODE/INFORMATIONAL SIGNAGE LOCATION
- NATIVE PRAIRIE PLANTINGS (PRAIRIE TO BE BURNED EVERY 3-5 YEARS)
- MAIN ASPHALT TRAIL LOOP 1/2 MILE
- WHITE PINE GROVE FEATURES NEWLY PLANTED WHITE PINE TREES AND A BENCH OFFERING SCENIC VIEWS INTO THE ADJACENT RAVINE
- BLACK MAPLE GROVE FEATURES A MATURE BLACK MAPLE TREE CANOPY AND A PAVED TRAIL LOOP
- BLACK MAPLE GROVE
- RED OAK GROVE
- RED OAK GROVE FEATURES RED OAK TREES OF VARYING AGES, AND FEATURES AN UNPAVED WOODLAND TRAIL FOLLOWING THE UPPER RIDGELINE OF THE PARK
- ENLARGED GAZEBO/PICNIC SHELTER WITH MATERIALS AND STYLE THAT MATCH OVERLOOK
- ORNAMENTAL TREE/ ORCHARD/ARBORETUM
- EDUCATIONAL OVERLOOK PAVILION DESIGNED AND BUILT TO INCORPORATE EXISTING MATURE TREES
- PARK ENTRANCE LANDSCAPING TO INCORPORATE NATIVE MATERIALS AND PLANTINGS TO RELATE MORE CLOSELY WITH THE OVERALL INTELLECT OF THE NATURAL PARK SETTING
- REMOVABLE BOLLARDS AT TRAIL ENTRANCE TO RESTRICT VEHICULAR ACCESS
- 14
- MARY CIRCLE
- CHapel Ln
- Main Circle
- Main Ln
- LAKE ST.
- HANCOCK POND



Bluff Park Overlook

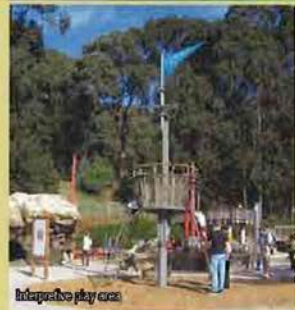


Benson Park Facilities

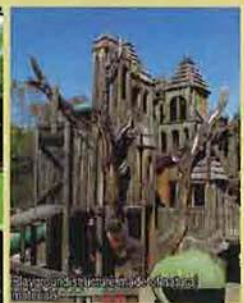
A Active Play



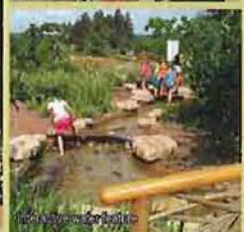
Formal stage and classrooms



Interactive play area



Playground structure with natural materials



Interactive water feature

B Tree house/ maple sugaring and sledding hill

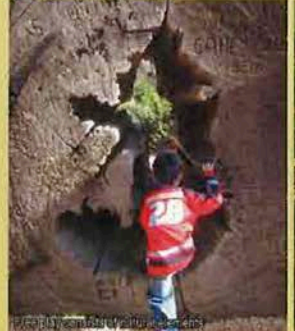


Maple syrup demonstration programs could also serve as a third case.



Opportunity to incorporate year-round activities

C Natural Play Area



Play area with natural elements



Wetland play area with natural elements



Placement of natural elements will be guided by recommended architecture

D Informal plants/ lawn areas



Small areas of informal plants and informal play

E Habitat gateway



Gateway will welcome users to the wetland

F Stormwater structure



Stormwater structure will be a natural element in the park and stormwater management on site

G Wildflower demonstration area



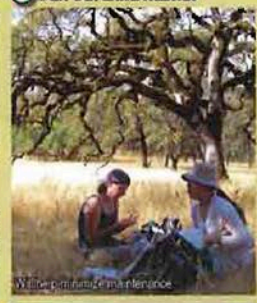
Planted area with various types of native wildflowers

H Bridge crossing



Will connect across the wetland natural area

I Oak Savanna habitat



Will be a natural element in the park



Will be a natural element in the park

J Rainwater gardens



Will be a natural element in the park

K Overlook and outdoor classroom



Will be a natural element in the park

L Rolling hills prairie habitat



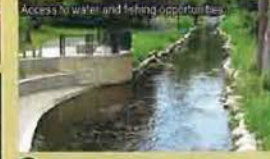
Will be a natural element in the park

M Natural amphitheater



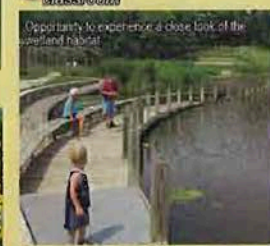
Will be used for informal presentations of outdoor classroom

N Formal fishing pier



Access to water and fishing opportunities

O Boardwalk and outdoor classroom

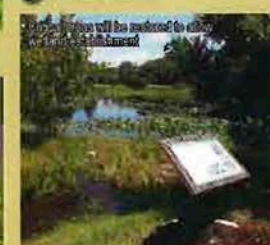


Opportunity to experience a close look of the wetland habitat



Opportunity to experience a close look of the wetland habitat

P Wetland habitat



Wetland habitat will be restored to allow for natural element

Q Natural water edge



Along Lupton Lake and stormwater ponds to provide natural water edge and natural element

R Small shelter



Small shelter for outdoor classroom

S Use of pervious materials

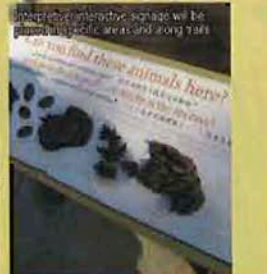


Some of the pervious materials will be used in the park



Some of the pervious materials will be used in the park

T Interpretive signage



Interpretive signage will be placed in public areas and along trails



Playground Equipment

- Replace Structure in Northridge Park
- Add Structure in Walter S. Farm Park
- Natural Playscape



Natural Playscape





Spring Lake Park Restroom

Miracle League Playground





Emerald Ash Borer Management

- Emerald ash borer (EAB) is an invasive forest insect from Asia responsible for the deaths of millions of ash trees throughout the eastern half of the U.S. and southeastern Canada. EAB infests and kills weak and healthy ash trees alike, and all species of ash native to North America are vulnerable to EAB attack. With nearly 1 billion ash trees in the state, the spread of EAB will have a serious impact in Minnesota.
- North Mankato has begun a proactive effort to manage the damage of this invasive species.

Closing Remarks



Questions?

