

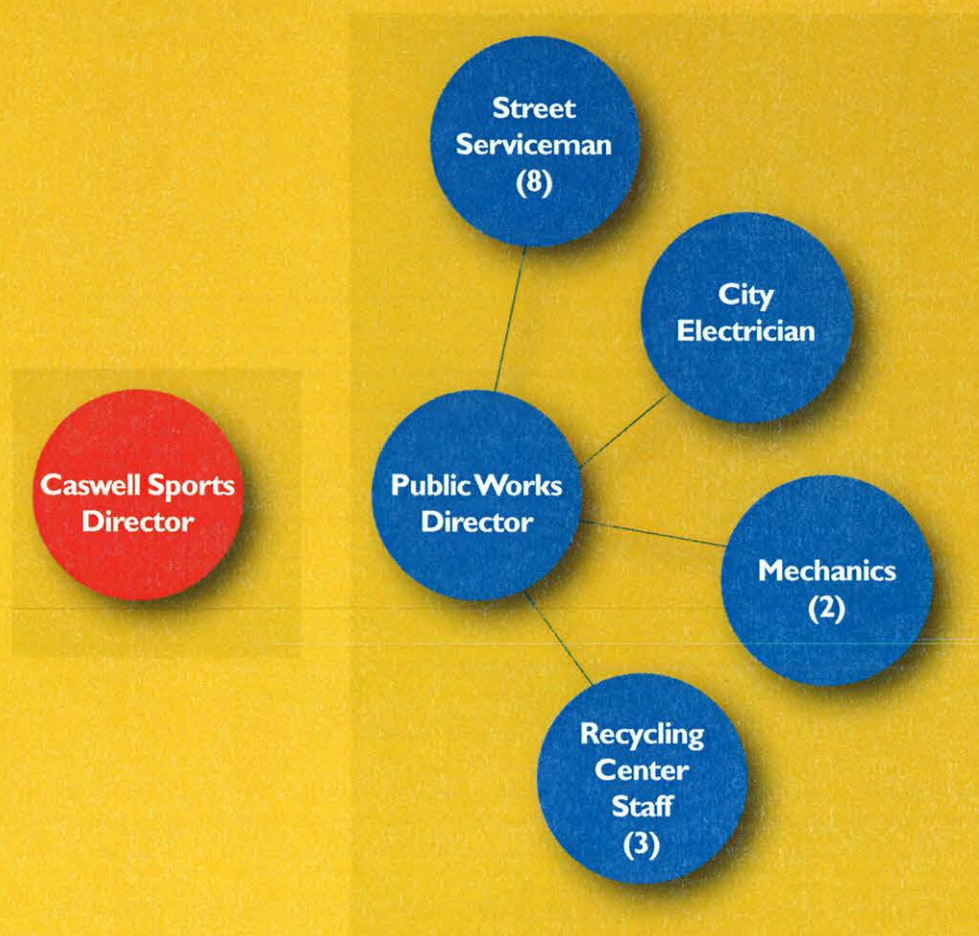


The North Mankato Street Department

2016 ANNUAL REPORT



PERSONNEL



STREET SYSTEM

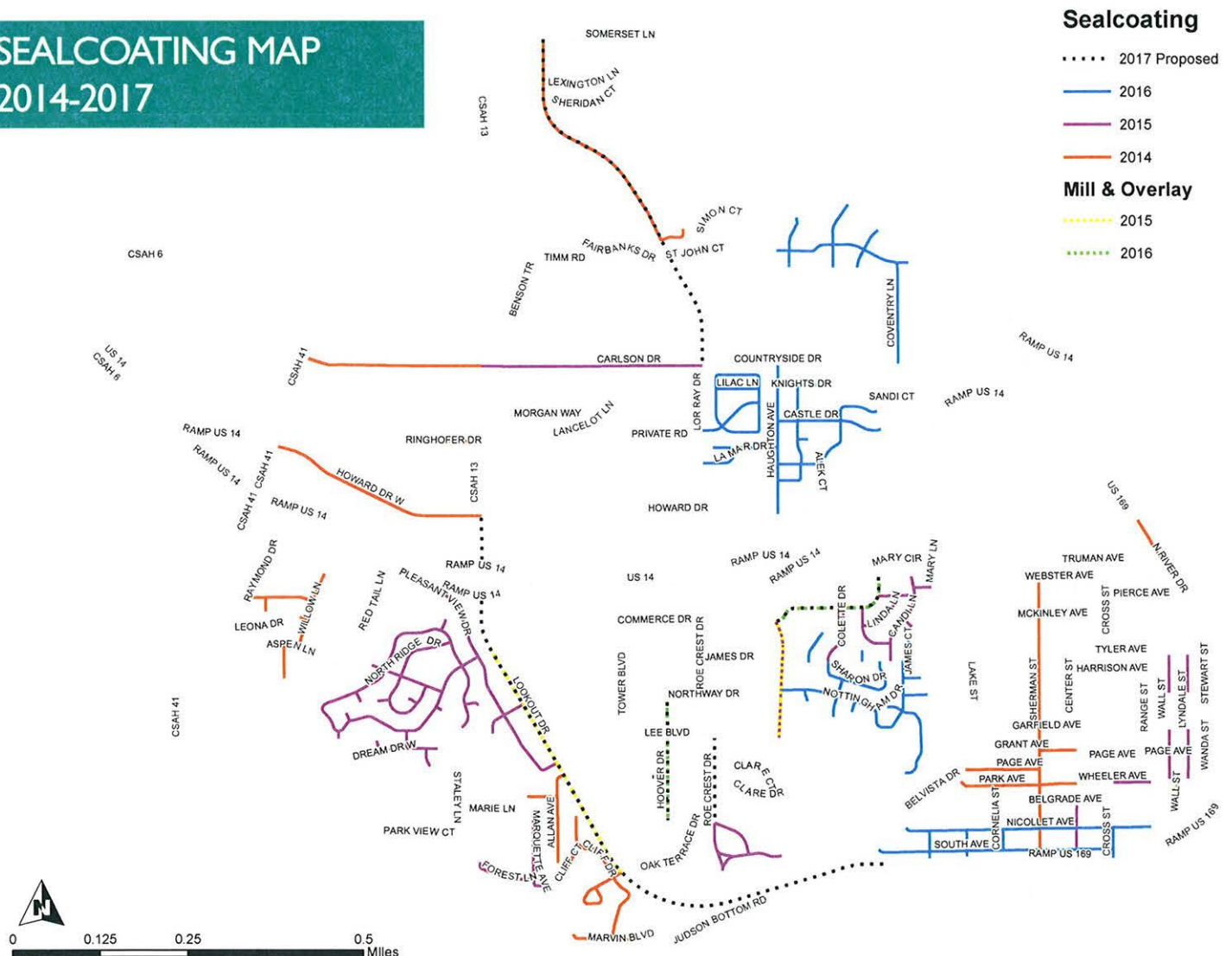
Approximately 77 miles of residential, collector, and arterial roadways. Maintenance responsibilities include surface, subsurface, curb and gutter.

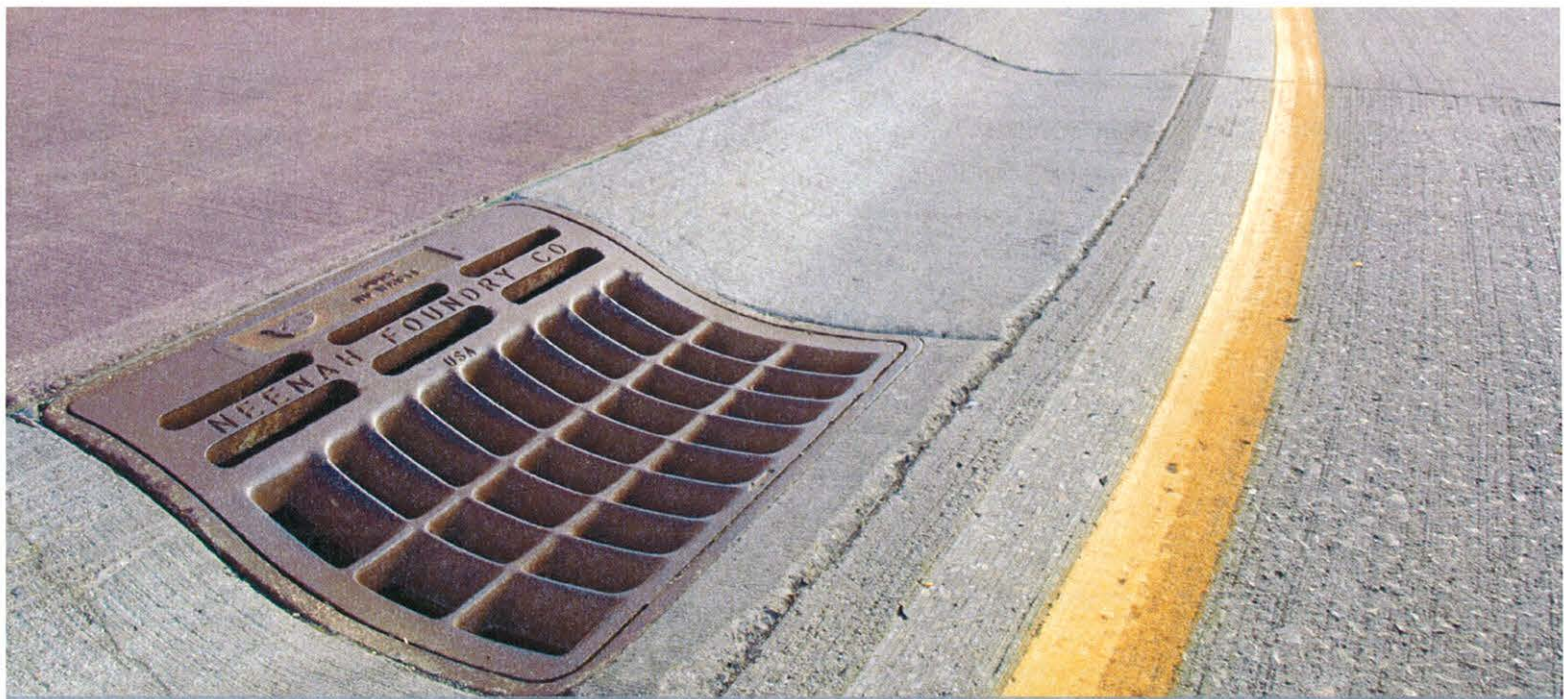
- 9 Miles were seal coated, compared to 8.75 miles in 2015 (completed by staff).
- 0.80 Miles were overlayed, compared to 1.25 miles in 2015 (contracted).
- 5 Miles were crack sealed, compared to 3 miles in 2015 (completed by staff).

In 2016, public works crews utilized 50,000 Gallons of oil and 1,770 Tons of rock for the seal coating program. The 2017 route will include new asphalt on Lookout Drive, Lor Ray Drive (from White Oak Drive to Somerset Lane), and Commerce Drive (from Lor Ray Drive to Candi Lane).

The street program is consistent with the Pavement Management Plan adopted by the City Council in 2015 that calls for a cycle of construction, sealing every 7 years, overlaying every 30 years, and reconstruction every 50 years.

SEALCOATING MAP 2014-2017





STORM SEWER SYSTEM

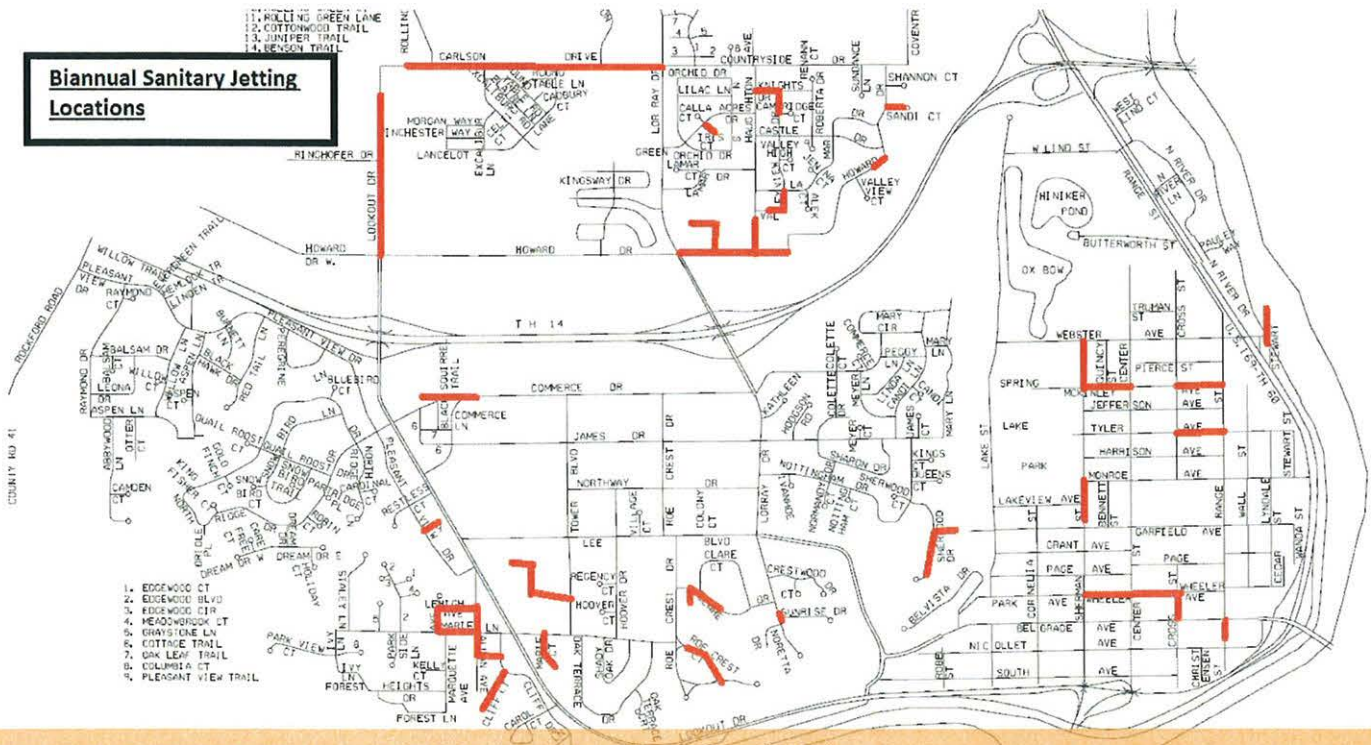
Inspection and maintenance for 87 miles of storm sewer and several detention ponds.

- 12 Catch Basins were repaired or reconstructed in 2016.
- Storm water pond maintenance practice adjusted in 2012 based on recommendations of the Green way Advisory Committee.
- Storm water pumping stations operating for 396 hours in 2016 compared to 104 hours in 2015.
- Levee and storm water pumping stations were inspected with the Corp of Engineers to ensure proper operation of this critical asset. Overall high marks were given to operations.
- Staff met with FEMA, DNR, Corp of Engineers and affected local government bodies to discuss the classification of the levee closure at Highway 169 and Highway 15. In a significant flood event an earthen levee must be constructed across Highway 169 just north of Highway 14 to protect the valley portion of North Mankato from flooding. Assessment of the area has caused FEMA to indicate that a new temporary levee closure may need to be considered to maintain our flood protection rating. This portion of the levee is operated by the City of Mankato. They are currently working with the Corp of Engineers, FEMA, and Mn DOT to address the situation.

3,832 Catch Basins

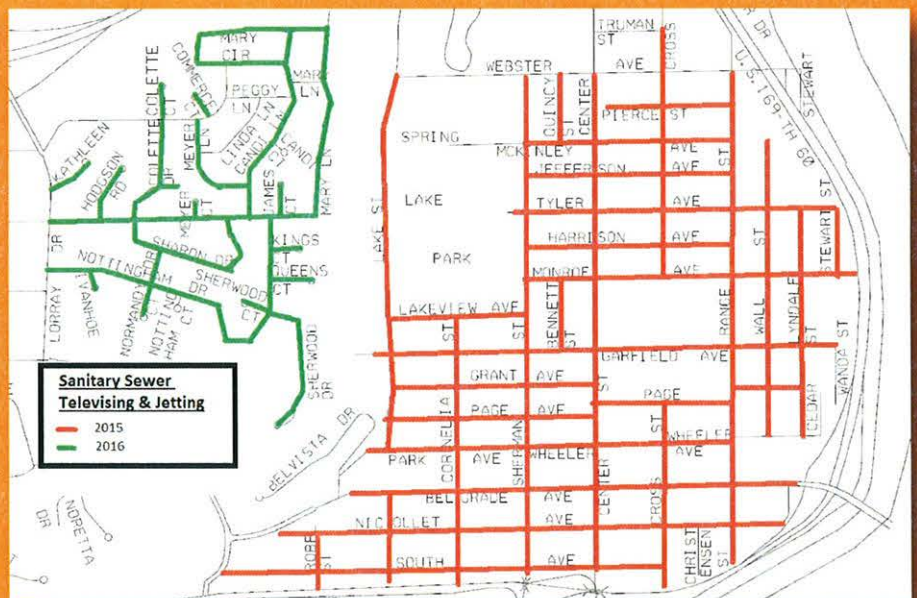
48 Storm Detention Ponds

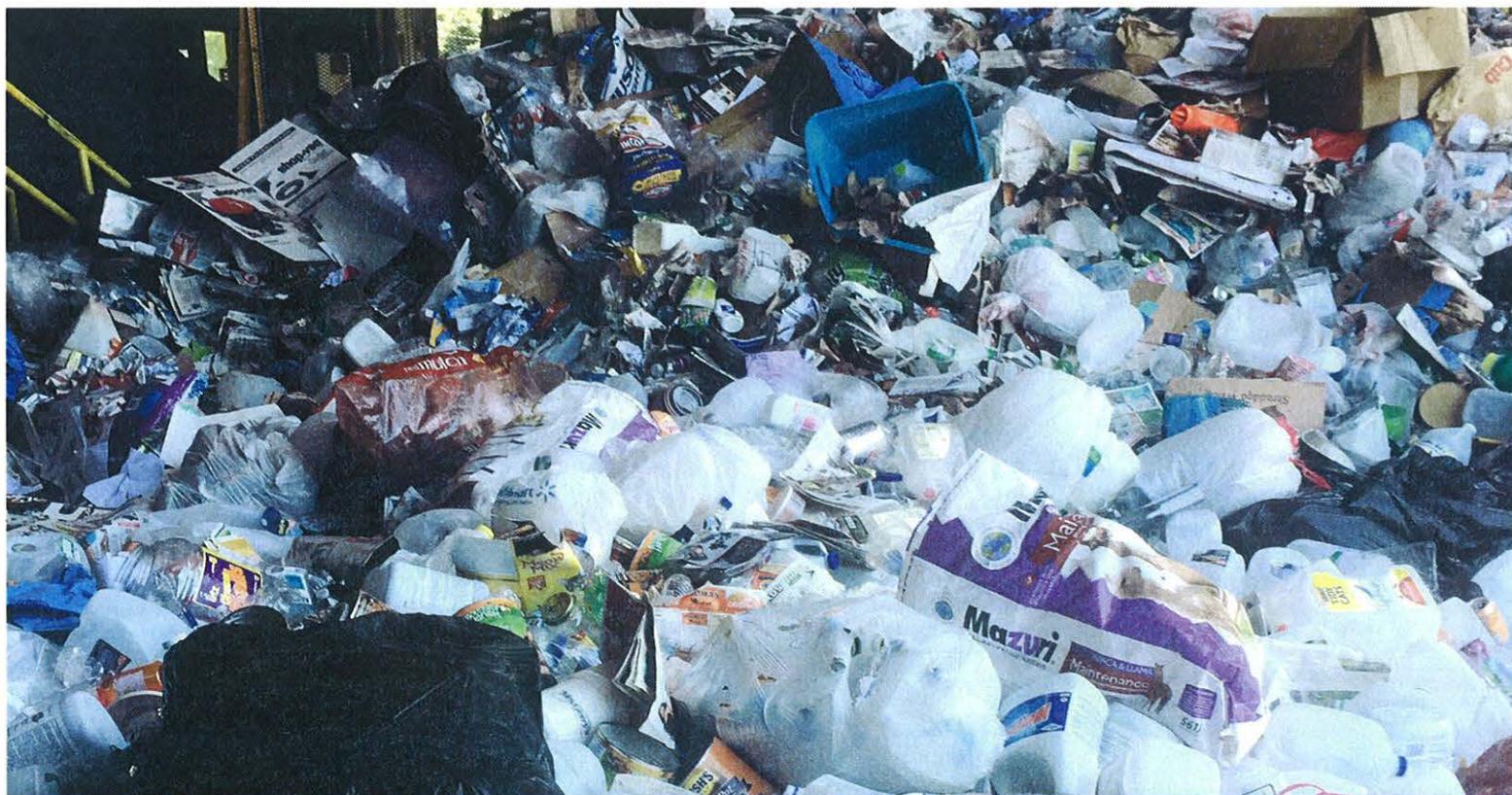
Biannual Sanitary Jetting Locations



SANITARY SEWER SYSTEM

- 62 Miles of sanitary sewer mains
- 1,274 Manholes
- 14 Manhole inspections and repairs
- 3.8 Miles of sanitary sewer main are jetted twice per year
- Each line in the city is inspected and jetted at least every 10 years
- Participating in the Mankato Wastewater Treatment Master Plan process
- I&I report underway for select areas of the city





WASTE and RECYCLING

Riverbend Recycling Center

1,537 Tons of materials were recycled in 2016, compared to 1,185 in 2014 (2015 was the year we made a change in transition practices). The increase can be directly attributed to increased cardboard and paper recyclables received at the facility.

152,354 Pounds of electronic recycling went through the facility in 2016.

Solid Waste Collection

- Trash collection: A total of 3,379 tons were disposed by West Central at MWP in 2016 compared to 3,466 tons in 2015 and 3,433 tons in 2014.
- Spring Clean Up: \$42,242
- Fall Drop Off: \$35,130
- Leaf Collection: 340 hours



STREET LIGHTING SYSTEM

In an ongoing effort to decrease energy usage and increase efficiency, staff has begun replacing old street light heads with LED lamps.

DISASTER RESPONSE SYSTEM

- Monthly tests of emergency notification system (tornado sirens)
- Wind damage debris removal (two storms this summer, seven working days)
- Assisted St. Clair and Waterville
- Multiple winter storm incidents required mobilization of crews for snow/ice removal

2016 brought a multitude of challenges throughout the year mainly revolving around the consistent above-average rainfall. Projects and daily tasks were often delayed as staff addressed maintaining the storm water infrastructure as they waited for drier conditions. Street patching and ravine maintenance were affected by the weather and aggressive projects scheduled resulted in fewer streets maintained than planned.

Substantial rains caused significant localized flooding throughout the region. While North Mankato's storm water infrastructure performed well, several other communities including St. Claire and Waterville did not fair as well. Staff and equipment were deployed to assist these communities. North Mankato supplied sandbags, pumps, and other equipment to these communities to help mitigate the situation.

SPECIAL PROJECTS

Public works crews participated in the City Hall ramp and parking lot improvements in conjunction with Nielson Blacktopping. City staff was responsible for removals, utility installation and the placement of earth and granular fill to raise the grade of the area to eliminate the need for a ramp in front of City Hall. Staff coordinated their work with engineers and sub-contractors to ensure a timely and quality result of the project.



The department works closely with non-profit entities. Staff has assisted in the construction of displays at the Children's Museum of Southern Minnesota, hauling wood-chips for the Human Society for dog walking trails, and participates with the Miracle League of North Mankato in the design and execution of the soon to be constructed all-inclusive Fallenstein Playground at Caswell Park.

The focus of 2017 is two-fold. First, the Public Works department is scheduled to complete several ongoing projects including a shelter, bridge, parking lot, and fishing pier in Benson Park in addition to constructing two outdoor hockey rinks within Spring Lake Park. Secondly, a focus will be placed on addressing the core functions of patching, storm sewer repair, and ravine maintenance associated with these projects.



COMMUNITY EVENTS

- Coordination and promotion of softball and soccer tournaments at Caswell north and south
- Traffic control and staffing for public events (e.g. Blues on Belgrade, Anthony Ford Pond Hockey)

Along with maintaining the physical infrastructure, staff also coordinated and executed traffic control for public events including the Fun Days parade, Blues on Belgrade, and the North Star Bike Race. The bike race was the most involved of the events during 2016. This event required three phases of traffic control during the race and over 70 traffic controls during the event. An additional challenge was added with a wedding being held within the race course at the time of the race. Staff coordinated with the bride and church to ensure the event went on without a delay.



© Stephanie Williams 2016



© Stephanie Williams 2016