

**March 4, 2024**

**Public Safety Committee Packet**



# Malden Department of Public Safety

**Jeffrey Mitchell**  
**Director of Public Safety / Chief of Police**  
112 E. Laclede St., Malden, MO 63863  
malden.mo.dps@gmail.com

**Maj. Bobby Jones**  
**Assistant Chief of Police**  
Phone: 573-276-2211  
Fax: 573-276-2379



February 22, 2024

**Reference: Sale of Fire Truck 16 proceeds**

**To: Malden Public Safety Committee**

The sale of the fire truck for \$141,000.00 presents a unique opportunity for the DPS to acquire some much-needed equipment.

1. We are recommending that we buy a patrol vehicle. If we bought a vehicle now, received the vehicle from the BPW in July, and continued the loan for a vehicle in August, this would provide three vehicles. We recommend buying a vehicle, with an estimated cost of \$30,000.00 to \$40,000.00. This will also allow us to sell 1 of our current older vehicles, which reduces our maintenance costs.
2. The DPS's current server's operating system, which includes all divisions information, is out-of-date and security updates are no longer provided. We are required to maintain a certain level of security with our files, especially the police files, and our system is not capable.

The Hikvision cameras we currently have at the police department have been banned by the government and recommended by the government to be removed from all government facilities.

We would like to use a portion of the remaining funds to replace our DPS server, and department cameras for an estimated cost of \$25,000.00.

3. We would like to use \$4,000.00 to purchase new kennels for the dog pound.
4. Several of sets of fire turnout gear worn by our volunteers is expired or close to expiring. We have acquired some gear through a grants. If we were to purchase 9 sets of turnout gear for the volunteer firemen for \$35,000.00, this would ensure the firemen had up-to-date gear.
5. We recommend replacing the emergency siren located by Casey's south. I have a quote of \$32,844.00, with us providing the pole, from April 19, 2023, for a new siren that would provide broader area of coverage, especially for the east side of town. Currently



# **Malden Department of Public Safety**

**Jeffrey Mitchell**

**Director of Public Safety / Chief of Police**

112 E. Laclede St., Malden, MO 63863

malden.mo.dps@gmail.com

**Maj. Bobby Jones**

**Assistant Chief of Police**

Phone: 573-276-2211

Fax: 573-276-2379



the siren has to be activated manually. I have had the electronics of the siren checked and replaced the radio in the siren's box. It is an old system and Battles has not been able to repair it.

We are asking to purchase these assets, because they will have to be purchased and buying them in this manner prevents the use of future budgetary funds.

In my 31 years I can't remember a time where we had the available means to make purchases of this nature. The purchases would greatly benefit four Divisions of the Department of Public Safety.

Respectfully,

Director Jeff Mitchell

cc Mayor Kooyman

**MALDEN DEPARTMENT OF PUBLIC SAFETY  
VEHICLE ALLOCATION SCHEDULE  
(REASONS FOR ROTATION: MILEAGE AND/OR MAINTENANCE)**

VIN	YEAR	MAKE	MODEL	MILEAGE	DIVISION	SCHEDULED FOR SALE	REASON	FISCAL YEAR OF SALE
0648	2016	Ford	Explorer	84018	POLICE			
0649	2016	Ford	Explorer	93145	FIRE/CE			
1152	1981	Ford	Fire Truck	30873	FIRE	YES	Maintenance	2023-2024
1529	1992	Chevrolet	HMMWV	N/A	POLICE			
1366	1999	International	Fire Truck	511057	FIRE			
2746	1995	Freightliner	Fire Truck	41882	FIRE			
3564	2011	Dodge	Ram	61155	FIRE			
5057	2008	Chevrolet	Van	178168	HUMANE			
5194	2016	Dodge	Charger	126973	POLICE			
5865	2012	Ford	F-150	48277	POLICE/CE			
6163	2014	Dodge	Charger	137027	POLICE/FIRE			
6180	2023	Chevrolet	Tahoe	12535	POLICE/FIRE			
6420	2012	Chevrolet	Tahoe	135126	POLICE/FIRE	YES	Mileage and Maintenance	2024-2025
6928	2018	Ford	Explorer	57998	POLICE/FIRE			
7214	2021	Chevrolet	Tahoe	24681	POLICE/FIRE			
7293	2016	Ford	Explorer	77044	POLICE/FIRE			
7339	2024	Freightliner	Fire Truck	2397	FIRE			
7348	2007	Freightliner	Fire Truck	56270	FIRE			
9172	2016	Dodge	Charger	45984	POLICE	YES	Maintenance	2024-2025
9690	2017	Chevrolet	Siverado	108214	POLICE			
9760	2021	Chevrolet	Tahoe	29592	POLICE			



## Outdoor Warning Consulting LLC.

**Sales**

**Installation**

**Service**

*"Serving Missouri Communities for over 40 years"*

**DATE:** April 19, 2023

**TO:** City of Malden  
201 S Madison Street  
Malden, MO. 63863

**SUBJECT:** Whelen Outdoor Warning System

Thank you for requesting information on Whelen outdoor warning systems. Outdoor Warning Consulting LLC is a woman minority owned business. We have been associated with Whelen Engineering since 1982. I would like to say "Thank You" in advance for the opportunity to submit information to City of Malden on your proposed early warning system.

All Whelen Engineering Company outdoor voice warning systems are design, manufacturer and assembled in the United States. Each unit is constructed out of maintenance free materials. You never have to worry about rusting or painting. In comparison, they are much lighter in weigh than any other available units. These units are 100% electronic and battery operated with a temperature compensated battery charger powered by 120VAC or solar power. Batteries will give you up to 30 minutes of continuous use and can operate for up to 14 days without recharging. Because the sirens are electronic and require "no moving parts" to create sound, they can operate on as few as 19VDC at maximum performance. Whelen sirens have 400 watt speaker drivers, specifically made for outdoor warning, that have a life expectancy of nearly 20 years. All sirens are standard with lightning arrestors for AC service, six standard tones, and have local "Silent Test". Additionally, Whelen sirens have been shown to be superior in workmanship, tone output or voice clarity.

Whelen Engineering Company has installed more electronic sirens worldwide than all our competitors combined and have over 1000 warning systems in the State of Missouri. Communities close to you that have Whelen systems are Stoddard County (11), City of Sikeston (7), City of New Madrid (3), Butler County (15), Hayti (2).

All Whelen sirens come with a 24-month user direct warranty, with an additional 3-year extended warranty whereby equipment repairs are made at a fixed price.

Please review all the information contained within this packet. Again, we appreciate the opportunity to provide this information. We will look forward to working with your community on this project.



## Outdoor Warning Consulting LLC.

Sales

Installation

Service

*"Serving Missouri Communities for over 40 years"*

**DATE:** April 19, 2023

**TO:** City of Malden  
201 S Madison Street  
Malden, MO. 63863

**SUBJECT:** Whelen Warning System Proposal

Outdoor Warning Consulting would like to submit the following proposal for one (1) 125 dB siren unit with a radius coverage of 4800 feet for Malden, MO. The siren system includes the following:

- 1 Whelen WPS2906A 125dbc, 4800 foot radius area of coverage at 70dBc.  
The Whelen siren system includes;
  - A) Battery Power, operates on four (4) batteries, which will give you up to 30 minutes continuous power, the system only draws 7 amps of service
  - B) Maintenance free aluminum control cabinet and composite speaker assembly
  - C) Temperature Compensated Battery Charger,
  - D) Local Diagnostic controls and timer,
  - E) No Moving Parts
  - F) Whelen Basic Warranty is 2 years with an extended warranty of 5 years @ a flat rate per module charge plus shipping,
  - G) Whelen Systems Diagnostic Silent Test
  - H) Whelen N2030NV DTMF Narrow Band One Way Radio (VHF)
  - I) Whelen WPSTTU Two-Tone Decoder
  - J) Whelen 2TTM Additional Two-Tone Decoder
  - K) Whelen WPSBATT One pair of batteries
  - L) Shipping
  - M) Whelen unit certified as per ANSI S12.14
  - N) Whelen products are designed, manufacturer, and assembly in the United States by an American owned company.
  - O) Outdoor Warning Consulting of Jefferson City is a Missouri owned and operated company serving Missouri communities since 1982.
  - P) Manufacturing time is 14 to 17 weeks ARO from Chester, Conn

**TOTAL**

**\$32,844.00**

### INSTALLATION

OWC will attach all Whelen components to customer supplied 60 foot Class 1 pole, while on ground. The customer supplies the digging, setting and power hook up of the pole. OWC will make all final terminations and testing.

**OPTIONS:**

**Turn-Key Installation:**

\$ 11,500.00

Outdoor Warning Consulting will supply one (1) 60' foot pole class one pole, dig the hole and set pole. The customer will supply AC service to the pole. OWC will attach all Whelen components while the pole is on the ground, make all final termination and test the unit.

**ROCK CLAUSE – If we hit rock, the charge is \$425.00 per lineal foot.**

**HYDRO EXCAVATION – If utilities locates require \$900.00**

**NOTE:**

The Whelen WPS2906 is expandable to a WPS2910, which will increase the dB levels and coverage areas.



# WPS2906 Six Cell



## Mass Notification Warning Product

*Whelen's Mass Notification WPS2900 Series omni-directional voice product delivers clear, powerful voice communication.*

### SYSTEM FEATURES

- **WPS2906** – Six omni-directional speaker cells assembled in a vertical column
- Three compartment (Type III) natural finish aluminum or stainless steel cabinet
- Speaker cell includes six high efficiency 400 watt **EZ-PULL™** speaker drivers
- 50' (15.24m) cable included
- Pole top mounting bracket included
- Public address and pre-recorded voice message capability
- AC temperature compensated "tri-mode" 10 amp battery charger
- Local or remote controls available
- Battery powered
- Six power amplifiers
- Electronic controller
- Tone Generator Timer
- Local control push-buttons
- Battery switch
- **RDVM1G** – digital voice 1-28 message capable
- **SI TEST®**
- **SLIDEOUT™** battery tray
- Lightning arrestor
- Six standard warning tones – Wail, Whoop, Alert, Attack, Hi-Lo, Airhorn

### SYSTEM OPTIONS

- **Solar option** – Two each 80 watt panels, with brackets and solar regulator
- **Batteries** – Four each Delco S2000 or Interstate Workaholic 31-MHD Batteries. Check Whelen's web site, [www.whelen.com](http://www.whelen.com), for other recommended batteries
- **Microphone** – for use at the cabinet (locally) or at the control point (remotely)
- **VisuAlert™** – Omni-Directional visual warning Model **VALERT®** for 2900 Series
- **L31H\*F4** – Top mount high dome beacon for 2900 Series, 24 VDC

### ACTIVATION CONTROLS

Our VHF and UHF radio narrow-band control packages feature Whelen protocol COMM/STAT™ and include the following:

- Radio
- Radio interface
- Tone or digital squelch
- 3-5 dB gain omni-directional antenna with bracket
- 35' (10.67m) of RG58 antenna cable
- Polyphaser
- SI TEST
- Low battery alarm (two-way only)

Other features are dependent upon one or two-way controls. Whelen equipment can be interfaced with many different types of two-way radio communications products and systems, from ACE, MOSCAD and FSK.

The following is available as standard options. **BOLD BLUE** indicates the Whelen Model:

### ONE-WAY CONTROLS

- **AUXIN** – Auxilliary board for contact closure activation
- **D2030LL** – 10 digit DTMF Landline
- **D2030NV** – 10 digit DTMF VHF High-Band Narrow-Band/138-174MHz
- **D2030NU** – 10 digit DTMF UHF Narrow-Band /450-470MHz
- **WPSTT** – Two-tone sequential option (one-way radio package must be ordered from above options)

### TWO-WAY CONTROLS

- **AUXCS** – Two-way contact closure activation and status board
- **C2030LL** – Two-way landline activation
- **C2030NV** – 10 digit DTMF VHF High-Band Narrow-Band/138-174MHz
- **C2030NU** – 10 digit DTMF UHF Narrow-Band /450-470MHz

### OPTIONS

- **STATUS** – Cabinet window LED status indicator
- **PGINT** – Paging interface
- **INTRUWPS** – Intrusion alarm



Type III  
Electronic  
Cabinet



# WPS2906 Six Cell



## Specifications

Component	Height Inches (CM)	Width Inches (CM)	Depth Inches (CM)	Weight Lbs. (kg)
WPS2906 Speaker	80.8 (205.23)	33.4 (84.84)	—	388 (175.99)
Electronics Cabinet Type III (Aluminum)*	74.5 (189.23)	33.2 (84.33)	12 (30.5)	210 (95.3)
Pole Top Bracket	30.5 (77.47) (with top plate)	12.0 (30.50) x 13.5 (34.30)	See Drawing	71 (32.20)

Batteries add 230 lbs. (104.32 kg) \*Stainless cabinet option adds 80 lbs. (36.29 kg)  
Pallets, boxes and skids add weight. Check with Whelen if a freight quote is needed.

## Electrical

- Battery Charger Input:** 120VAC, 60Hz, 7A fuse (240VAC 50/60 Hz available)
- Battery Charger Output:** 28VDC, 10A (nominal)
- Batteries:** (4) 12V, 115AH lead calcium
- Standby Current:** 82mA, 24VDC
- Operating Current:** 133A, 24VDC
- Power Amplifier Output Power:** Tone: 2400 watts, Voice: 3000 watts

## Environmental

- Operating Temperature:** -35°C to +60°C
- Storage Temperature:** -65°C to +125°C
- Humidity, Non Condensing:** 0 to 95%

## Ordering Information

### BASIC SYSTEM INCLUDES THE FOLLOWING

- WPS2906** – Speaker assembly with 50' (15.24m) cable & electronics cabinet with all the standard components including voice board for 1-28 pre-recorded messages and Pole Top Bracket

### OPTIONS

- AUXIN** (one-way) / **AUXCS** (two-way) – Auxiliary boards for contact closure activation
- D2030LL / D2030NV / D2030NU** – One-way controls
- C2030LL / C2030NV / C2030NU** – Two-way controls
- WPSTT** – Two-tone sequential
- STATUS** – Cabinet window LED status indicator
- PGINT** – Paging interface
- INTRUWPS** – Intrusion alarm (two-way only)
- MSGPROG** – Custom pre-recorded messages
- MSGPROGL** – Whelen library messages
- WPSNMCIC** – Microphone for public address use at the cabinet
- WPSBATT** – One pair of Whelen approved batteries
- RTM** – Roof top mount
- SBC280** – Solar option

### OPTIONAL LIGHTING ACCESSORIES

- VALERT\*** – VisuAlert™ lighting accessory
- L31H\*F4** – L31 LED, 24VDC
- LCWPS** – LED controller with mounting plate, hardware and harnessing for L31
- LEDCTRL** – LED controller only

\* Specify color A=Amber, B=Blue, R=Red, C=White/Clear

## Acoustic Performance

**Wattage:** 2400 watts

**Estimated 70dB Range:** 4,800 ft / 1463 m

Weather, terrain and other structures may impact the range. Each siren within the system may have a decreased or increased range depending on conditions beyond our control.

**WARNING:** This product may contain chemicals known to the State of California to cause cancer and birth defects or other reproductive harm. For more information, visit [whelen.com/regulatory](http://whelen.com/regulatory).

## MASS NOTIFICATION PRODUCTS

**Whelen Engineering Company, Inc.**

51 Winthrop Road

Chester, Connecticut 06412-0684

860-526-9504

800-637-4736

[www.whelen.com](http://www.whelen.com)

[iowsales@whelen.com](mailto:iowsales@whelen.com)

Whelen Engineering Company, Inc.  
reserves the right to upgrade its products with  
design improvements without notification.

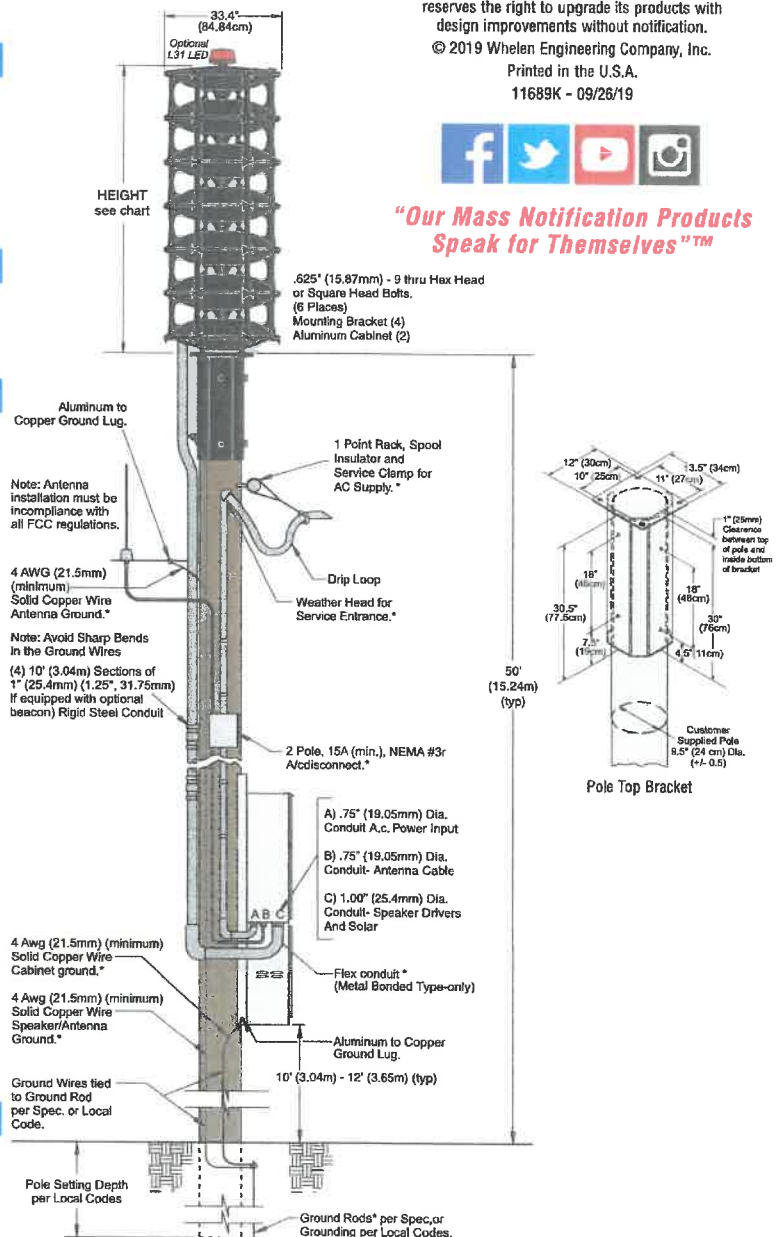
© 2019 Whelen Engineering Company, Inc.

Printed in the U.S.A.

11689K - 09/28/19



**"Our Mass Notification Products  
Speak for Themselves"™**







## Outdoor Warning Consulting LLC.

**Sales**

**Installation**

**Service**

*"Serving Missouri Communities for over 40 years"*

**DATE:** April 19, 2023

**TO:** City of Malden  
201 S Madison Street  
Malden, MO. 63863

**SUBJECT:** Whelen Warning System Proposal

Outdoor Warning Consulting would like to submit the following proposal for one (1) 126 dB siren unit with a radius coverage of 5100 feet for Malden, MO. The siren system includes the following:

- 1 Whelen WPS2907A 126dbc, 5100 foot radius area of coverage at 70dBc.  
The Whelen siren system includes;
  - A) Battery Power, operates on four (4) batteries, which will give you up to 30 minutes continuous power, the system only draws 7 amps of service
  - B) Maintenance free aluminum control cabinet and composite speaker assembly
  - C) Temperature Compensated Battery Charger,
  - D) Local Diagnostic controls and timer,
  - E) No Moving Parts
  - F) Whelen Basic Warranty is 2 years with an extended warranty of 5 years @ a flat rate per module charge plus shipping,
  - G) Whelen Systems Diagnostic Silent Test
  - H) Whelen N2030NV DTMF Narrow Band One Way Radio (VHF)
  - I) Whelen WPSBATT One pair of batteries
  - J) Shipping
  - K) Whelen unit certified as per ANSI S12.14
  - L) Whelen products are designed, manufacturer, and assembly in the United States by an American owned company.
  - M) Outdoor Warning Consulting of Jefferson City is a Missouri owned and operated company serving Missouri communities since 1982.
  - N) Manufacturing time is 14 to 17 weeks ARO from Chester, Conn

**TOTAL** **\$34,755.00**

### INSTALLATION

OWC will attach all Whelen components to customer supplied 60 foot Class 1 pole, while on ground. The customer supplies the digging, setting and power hook up of the pole. OWC will make all final terminations and testing.

**OPTIONS:**

**Turn-Key Installation:** \$ 11,500.00

Outdoor Warning Consulting will supply one (1) 60' foot pole class one pole, dig the hole and set pole. The customer will supply AC service to the pole. OWC will attach all Whelen components while the pole is on the ground, make all final termination and test the unit.

**ROCK CLAUSE – If we hit rock, the charge is \$425.00 per lineal foot.**

**HYDRO EXCAVATION – If utilities locates require \$900.00**

**NOTE:**

The Whelen WPS2907 is expandable to a WPS2910, which will increase the dB levels and coverage areas.



# WPS2907 Seven Cell



## Mass Notification Warning Product

Whelen's Mass Notification WPS2900 Series omni-directional voice product delivers clear, powerful voice communication.

### SYSTEM FEATURES

- **WPS2907** – Seven omni-directional speaker cells assembled in a vertical column
- Three compartment (Type III) natural finish aluminum or stainless steel cabinet
- Speaker cell includes seven high efficiency 400 watt EZ-PULL™ speaker drivers
- 50' (15.24m) cable included
- Pole top mounting bracket included
- Public address and pre-recorded voice message capability
- AC temperature compensated "tri-mode" 10 amp battery charger
- Local or remote controls available
- Battery powered
- Seven power amplifiers
- Electronic controller
- Tone Generator Timer
- Local control push-buttons
- Battery switch
- **RDVM1G** – digital voice 1-28 message capable
- **SI TEST**™
- **SLIDEOUT**™ battery tray
- Lightning arrestor
- Six standard warning tones – Wail, Whoop, Alert, Attack, Hi-Lo, Airhorn

### SYSTEM OPTIONS

- Solar option – Two each 80 watt panels, with brackets and solar regulator
- Batteries – Four each Delco S2000 or Interstate Workaholic 31-MHD Batteries. Check Whelen's web site, [www.whelen.com](http://www.whelen.com), for other recommended batteries
- Microphone – for use at the cabinet (locally) or at the control point (remotely)
- VisuAlert™ – Omni-Directional visual warning Model **VALERT**™ for 2900 Series
- **L31H\*F4** – Top mount high dome beacon for 2900 Series, 24 VDC

### ACTIVATION CONTROLS

Our VHF and UHF radio narrow-band control packages feature Whelen protocol COMM/STAT and include the following:

- Radio
- Radio interface
- Tone or digital squelch
- 3-5 dB gain omni-directional antenna with bracket
- 35' (10.67m) of RG58 antenna cable
- Polyphaser
- **SI TEST**
- Low battery alarm (two-way only)

Other features are dependent upon one or two-way controls. Whelen equipment can be interfaced with many different types of two-way radio communications products and systems, from ACE, MOSCAD and FSK.

The following is available as standard options. **BOLD BLUE** indicates the Whelen Model:

### ONE-WAY CONTROLS

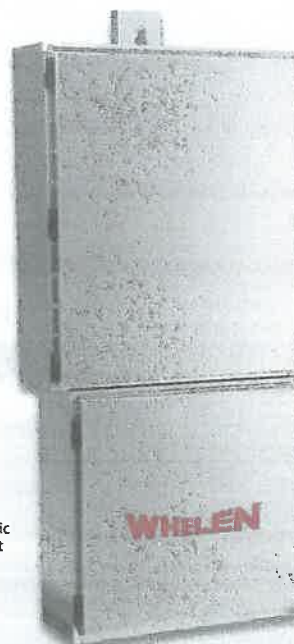
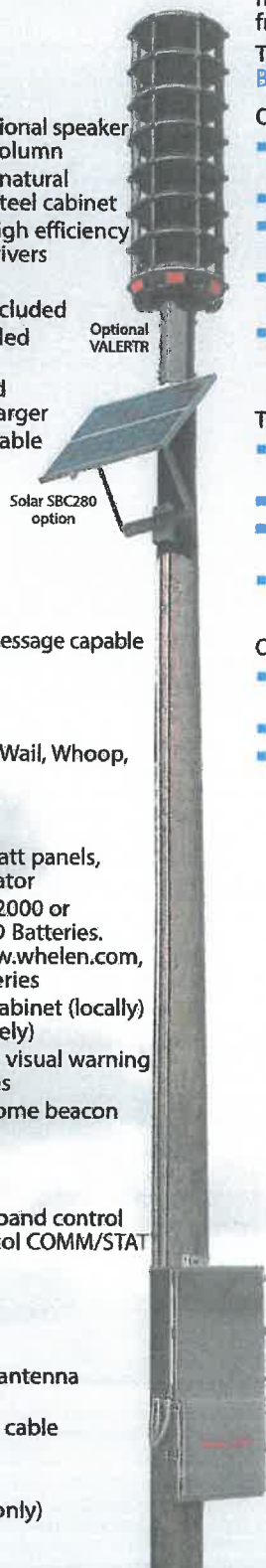
- **AUXIN** – Auxilliary board for contact closure activation
- **D2030LL** – 10 digit DTMF Landline
- **D2030NV** – 10 digit DTMF VHF High-Band Narrow-Band/138-174MHz
- **D2030NU** – 10 digit DTMF UHF Narrow-Band /450-470MHz
- **WPSTT** – Two-tone sequential option (one-way radio package must be ordered from above options)

### TWO-WAY CONTROLS

- **AUXCS** – Two-way contact closure activation and status board
- **C2030LL** – Two-way landline activation
- **C2030NV** – 10 digit DTMF VHF High-Band Narrow-Band/138-174MHz
- **C2030NU** – 10 digit DTMF UHF Narrow-Band /450-470MHz

### OPTIONS

- **STATUS** – Cabinet window LED status indicator
- **PGINT** – Paging interface
- **INTRUWPS** – Intrusion alarm



Type III  
Electronic  
Cabinet



# WPS2907 Seven Cell



## Specifications

Component	Height Inches (CM)	Width Inches (CM)	Depth Inches (CM)	Weight Lbs. (kg)
WPS2907 Speaker	93.2 (236.72)	33.4 (84.84)	-	437 (198.22)
Electronics Cabinet Type III (Aluminum)*	74.5 (189.23)	33.2 (84.33)	12 (30.5)	218 (98.9)
Pole Top Bracket	30.5 (77.47) (with top plate)	12.0 (30.50) x 13.5 (34.30)	See Drawing	71 (32.20)

Batteries add 230 lbs. (104.32 kg) \*Stainless cabinet option adds 80 lbs. (36.29 kg)  
Pallets, boxes and skids add weight. Check with Whelen if a freight quote is needed.

## Electrical

- Battery Charger Input: 120VAC, 60Hz, 7A fuse (240VAC 50/60 Hz available)
- Battery Charger Output: 28VDC, 10A (nominal)
- Batteries: (4) 12V, 115AH lead calcium
- Standby Current: 82mA, 24VDC
- Operating Current: 155A, 24VDC
- Power Amplifier Output Power: Tone: 2800 Watts, Voice: 3500 Watts

## Environmental

- Operating Temperature: -35°C to +60°C
- Storage Temperature: -65°C to +125°C
- Humidity, Non Condensing: 0 to 95%

## Ordering Information

### BASIC SYSTEM INCLUDES THE FOLLOWING

- WPS2907** – Speaker assembly with 50' (15.24m) cable & electronics cabinet with all the standard components including voice board for 1-28 pre-recorded messages and Pole Top Bracket

### OPTIONS

- AUXIN** (one-way) / **AUXCS** (two-way) – Auxiliary boards for contact closure activation
- D2030LL/D2030NV/D2030NU** – One-way controls
- C2030LL/C2030NV/C2030NU** – Two-way controls
- WPSTT** – Two-tone sequential
- STATUS** – Cabinet window LED status indicator
- PGINT** – Paging interface
- INTRUWPS** – Intrusion alarm (two-way only)
- MSGPROG** – Custom pre-recorded messages
- MSGPROGL** – Whelen library messages
- WPSNCMIC** – Microphone for public address use at the cabinet
- WPSBATT** – One pair of Whelen approved batteries
- RTM** – Roof top mount
- SBC280** – Solar option

### OPTIONAL LIGHTING ACCESSORIES

- VALERT\*** – VisuAlert™ lighting accessory
- L31H\*F4** – L31 LED, 24VDC
- LCWPS** – LED controller with mounting plate, hardware and harnessing for L31
- LEDCTRL** – LED controller only

\* Specify color A=Amber, B=Blue, R=Red, C=White/Clear

## Acoustic Performance

Wattage: 2800 watts

Estimated 70dB Range: 5,100 ft / 1555 m

Weather, terrain and other structures may impact the range. Each siren within the system may have a decreased or increased range depending on conditions beyond our control.

**WARNING:** This product may contain chemicals known to the State of California to cause cancer and birth defects or other reproductive harm. For more information, visit [whelen.com/regulatory](http://whelen.com/regulatory).

## MASS NOTIFICATION PRODUCTS

Whelen Engineering Company, Inc.  
51 Winthrop Road  
Chester, Connecticut 06412-0684  
860-526-9504  
800-637-4736  
[www.whelen.com](http://www.whelen.com)  
[iowsales@whelen.com](mailto:iowsales@whelen.com)

Whelen Engineering Company, Inc.  
reserves the right to upgrade its products with  
design improvements without notification.

© 2019 Whelen Engineering Company, Inc.

Printed in the U.S.A.

11690K - 09/26/19



"Our Mass Notification Products  
Speak for Themselves"™

