

BIRDS

Of Angelina County, Texas

A SEASONAL CHECKLIST



Michael Musummeche, Black-crowned Night-Heron



Michael Musummeche, Cattle Egret



Doyle Fincher, Painted Bunting



Jeanette McCall



DESTINATION LUFKIN

THE HEART OF THE TEXAS FOREST COUNTRY
LUFKIN CONVENTION & VISITORS BUREAU

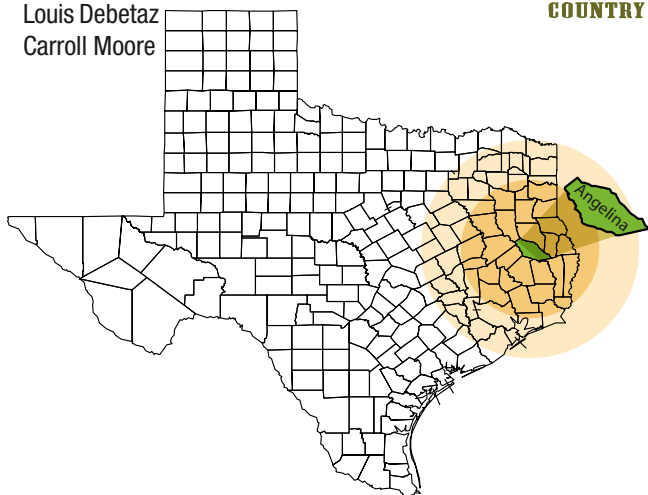
BIRDS Of Angelina County, Texas

A SEASONAL CHECKLIST



Compiled by:

Louis Debetaz
Carroll Moore



INTRODUCTION

Angelina County is the central county in a region of eastern Texas known as the Pineywoods. Four often sought after species, Bachman's Sparrow, Red-cockaded Woodpecker, Brown-headed Nuthatch, and in winter Henslow's Sparrow, are regularly reported in the county. Other birds of significant interest include the Swainson's Warbler, and the Prairie Warbler. A number of Bald Eagles can be found within the county, particularly near Sam Rayburn Reservoir in winter.

Angelina County is 807 square miles of gently rolling hills. Much of the county is covered with mixed pine hardwood forests. There are primarily four species of pine represented: long-leaf, short leaf, slash, and loblolly. Hardwoods are represented by gum, magnolia, elm, hickory, and oak. The remaining rural areas are much altered by man and include pine plantations, clearcuts, and pastures. Other than Sam Rayburn Reservoir, there are few areas of open water and many of the them are not available to the public. There are a limited number of wetland habitats represented as well as some bottomland hardwood forest.

SOME GOOD BIRDING SPOTS

Lufkin:

Azalea Trail

The trail stretches from Grace Dunn Richardson Park to Kiwanis Park. It can be accessed from either. Grace Dunn Richardson Park is near Loop 287 on the south side of Lufkin. It is a 1.5 mile trail through riparian habitat.

Angelina College Fitness Trail

This 0.9 mile trail is located on the northwest corner of the campus of Angelina College, which is found on the south side of Lufkin on US 59. The trail meanders through 20 acres of mixed pine hardwood forest beside Hurricane Creek.

Ellen Trout Zoo and Lake

Walking loops surround a 31 acre lake. The trails pass through mixed pine hardwood forests, near one of the best small city zoos in Texas. The zoo and lake are on Loop 287 on the north side of Lufkin near George H. Henderson, Jr., Exposition Center.

Diboll:

Old Orchard Park

The city park adjacent to the Neches Pines Golf Course contains mixed pine hardwood forest interspersed with nice walking trails and ball fields along White Oak Creek. It is found off Durham Hall Street on the east side of Diboll.

Near Sam Rayburn Reservoir:

Cassells-Boykin County Park

This park is hilly and covered with mixed pine hardwood forest. It allows access to a stretch of shoreline on Sam Rayburn Reservoir. It is found east of Zavalla off TX 147 four miles down FM 3123. Check out the SH 147 bridge and causeway nearby.

Marion's Ferry Park

The park and boat launch are found on FM 1669 just off TX 103 about 17 miles east of Lufkin on Sam Rayburn Reservoir. It is surrounded by pine forests and contains good shoreline habitat. It is one of the better spots for shorebirds when lake levels are low. Don't forget the SH 103 bridge and causeway across Sam Rayburn Reservoir.

There are four other parks on the southwestern shore of Sam Rayburn Reservoir within Angelina County.

Near Zavalla:

Bouton Lake Campground

Within the Angelina National Forest, this area offers a variety of hardwoods and mixed pine hardwood forests. It connects to nearby Boykin Springs Recreation Park just across the county border in Jasper County by the Sawmill Trail. It is on TX 63 in the far southeastern part of the county near Zavalla.

USING THIS CHECKLIST

Some species are strongly associated with specific habitats while others are found within many different habitats.

Abundance categories are determined within appropriate habitat. As a result, abundance categories may be inappropriate outside that habitat. For example, a bird listed as common may only be common within its limited and specific habitat. It is also true that abundance may vary within a defined season. For instance, bird migrations in the spring may be quite concentrated in relatively brief time periods rather than having an equal abundance throughout the season.

Birds listed as present during the summer season should not be assumed to be nesting since they may also represent early or late migrants, non-breeding populations, or vagrants.

Birds listed as vagrants have been reported fewer than five times in the 35 years, while species listed as rare have been infrequently but regularly reported. They may also have been reported more commonly but within only a very few years, as is the case with some irruptive species.

This checklist is based on sightings collected over a thirty-five year period by a number of individuals. There are 293 species listed with AOU Check-list 7th Edition ordering (47th Supplement).

CHECKLIST LEGEND

SEASONAL ABUNDANCE

In appropriate habitat in proper season:

A - Abundant, Seen on almost all trips, usually in large numbers

C - Common, Seen most of the time

U - Uncommon, Usually present but in low numbers or locally

R - Rare, Found infrequently

V - Vagrant, Seen only a very few times

* - Nesting species, Nesters or probable nester in the county

SEASONS

Sp - Spring, *March - May*

Su - Summer, *June - July*

Fa - Fall, *August - November*

Wi - Winter, *December - February*

Geese & Ducks		Sp	Su	Fa	Wi
	Black-bellied Whistling-Duck*	R	R	R	
	Greater White-fronted Goose	R		U	V
	Snow Goose	U		U	R
	Ross's Goose			V	V
	Cackling Goose	V		V	V
	Canada Goose	U		U	R
	Tundra Swan				V
	Wood Duck*	C	C	C	C
	Gadwall	U	R	C	C
	American Wigeon	U		U	U
	Mallard	U	V	U	C
	Mottled Duck		V	V	
	Blue-winged Teal	C	R	C	R
	Cinnamon Teal				V
	Northern Shoveler	U		U	C
	Northern Pintail	U		U	U
	Green-winged Teal	U		C	U
	Canvasback	U		U	C
	Redhead	R		R	U
	Ring-necked Duck	C		C	C
	Greater Scaup	U		U	U
	Lesser Scaup	U	V	U	U
	Surf Scoter				V
	White-winged Scoter				V
	Long-tailed Duck	V			V
	Bufflehead	U		U	U
	Common Goldeneye	R			R
	Hooded Merganser	U	R	U	U
	Common Merganser				R
	Red-breasted Merganser	R		R	U
	Ruddy Duck	U	R	U	C
Turkey					
	Wild Turkey	V	V	V	V
Quail					
	Northern Bobwhite*	U	U	U	U
Loons					
	Common Loon	U		U	U
Grebes					
	Pied-billed Grebe*	C	R	C	C
	Horned Grebe	U		U	U
	Red-necked Grebe	V			V
	Eared Grebe	R		R	R
	Western Grebe	V			V
Pelicans					
	American White Pelican	U	V	U	U
	Brown Pelican	V		V	
Cormorants					
	Neotropic Cormorant	R	R	R	R
	Double-crested Cormorant*	C	R	C	A
Darters					
	Anhinga*	U	U	U	R
Bitterns, Herons, & Egrets					
	American Bittern	V		V	V
	Great Blue Heron*	C	C	C	C
	Great Egret*	C	C	C	U
	Snowy Egret*	U	U	C	
	Little Blue Heron*	U	U	U	

	Sp	Su	Fa	Wi
Tricolored Heron	R	R	U	
Cattle Egret*	C	C	A	V
Green Heron*	C	C	C	
Black-crowned Night-Heron	R	V	R	R
Yellow-crowned Night-Heron*	U	U	U	
Ibises & Spoonbills				
White Ibis	C	C	C	V
White-faced Ibis	R	V	R	
Roseate Spoonbill		R	R	V
Storks				
Wood Stork		U	U	
Vultures				
Black Vulture*	C	C	C	C
Turkey Vulture*	C	C	C	A
Hawks, Kites, & Eagles				
Osprey*	U	R	U	R
Swallow-tailed Kite	V			
White-tailed Kite	V		V	
Mississippi Kite	U	R	U	
Bald Eagle*	U	R	R	U
Northern Harrier	U		U	U
Sharp-shinned Hawk*	U	R	U	U
Cooper's Hawk	U	R	U	U
Red-shouldered Hawk*	C	C	C	C
Broad-winged Hawk*	R	U	R	
Swainson's Hawk			V	
Red-tailed Hawk*	C	U	C	C
Golden Eagle	V		V	
Falcons				
American Kestrel*	U	R	U	C
Merlin	R		R	R
Peregrine Falcon	V		V	
Rails, Gallinules, & Coots				
Virginia Rail			R	
Sora	R		R	
Purple Gallinule*	R	R	R	
American Coot*	C	R	C	A
Cranes				
Sandhill Crane			V	V
Plovers				
Black-bellied Plover			U	V
American Golden-Plover	U		V	
Semipalmated Plover			U	
Piping Plover			R	
Killdeer*	C	C	C	C
Stilts & Avocets				
Black-necked Stilt	R			
American Avocet	V		U	
Sandpipers & Snipes				
Spotted Sandpiper	U	R	U	R
Solitary Sandpiper	U	V	U	V
Greater Yellowlegs	U	U	U	V
Willet	R		R	V
Lesser Yellowlegs	U	U	U	
Upland Sandpiper	U		U	
Hudsonian Godwit	V			
Ruddy Turnstone			V	
Sanderling	V		R	

	Sp	Su	Fa	Wi
Semipalmated Sandpiper	R	U	U	
Western Sandpiper	R	U	U	
Least Sandpiper	U	U	U	R
White-rumped Sandpiper	R			
Baird's Sandpiper	R		U	
Pectoral Sandpiper	U		U	
Dunlin	V	V	V	
Stilt Sandpiper		R	U	
Buff-breasted Sandpiper	V		U	
Short-billed Dowitcher			R	
Long-billed Dowitcher			U	V
Wilson's Snipe	U		U	U
American Woodcock*	U	R	U	U
Gulls & Terns				
Laughing Gull	V	V	R	V
Franklin's Gull	R		R	V
Bonaparte's Gull	R			U
Ring-billed Gull	U		U	C
Herring Gull	R		R	R
Least Tern			V	
Caspian Tern	R		U	R
Black Tern			U	
Common Tern			V	
Forster's Tern	U	R	U	C
Pigeons & Doves				
Rock Pigeon*	A	A	A	A
Eurasian Collared-Dove*	C	C	C	C
White-winged Dove	V		V	V
Mourning Dove*	A	A	A	A
Inca Dove*	U	U	U	U
Common Ground-dove			V	
Cuckoos, Roadrunners, & Anis				
Yellow-billed Cuckoo*	U	U	U	
Black-billed Cuckoo	R			
Greater Roadrunner*	R	R	R	R
Groove-billed Ani	V			
Owls				
Eastern Screech-Owl*	C	C	C	C
Great Horned Owl*	U	U	U	U
Barred Owl*	C	C	C	C
Nightjars				
Common Nighthawk*	C	R	U	V
Chuck-will's-widow*	U	U	R	
Whip-poor-will	U			
Swifts				
Chimney Swift*	A	C	A	
Hummingbirds				
Ruby-throated Hummingbird*	C	C	C	
Rufous Hummingbird	R		R	R
Kingfishers				
Belted Kingfisher*	U	U	U	U
Woodpeckers, Sapsuckers, & Flickers				
Red-headed Woodpecker*	U	U	U	U
Red-bellied Woodpecker*	C	C	C	C
Yellow-bellied Sapsucker	C		C	C
Downy Woodpecker*	C	C	C	C
Hairy Woodpecker*	U	U	U	U
Red-cockaded Woodpecker*	R	R	R	R

	Sp	Su	Fa	Wi
Northern Flicker*	U	R	C	C
Pileated Woodpecker*	U	U	U	U
Tyrant Flycatchers				
Olive-sided Flycatcher	R		R	
Eastern Wood-Pewee*	C	C	U	
Yellow-bellied Flycatcher	R		V	
Acadian Flycatcher*	C	C	U	
Willow Flycatcher	V			
Least Flycatcher	U		U	
Eastern Phoebe*	C	R	C	C
Vermilion Flycatcher			V	
Great Crested Flycatcher*	C	C	U	
Western Kingbird	R			
Eastern Kingbird*	C	C	U	
Scissor-tailed Flycatcher*	C	C	C	
Shrikes				
Loggerhead Shrike*	U	U	U	U
Vireos				
White-eyed Vireo*	A	A	C	R
Bell's Vireo		V	V	
Yellow-throated Vireo*	U	U	U	
Blue-headed Vireo	U		U	U
Warbling Vireo	U		U	
Philadelphia Vireo	U		U	
Red-eyed Vireo*	C	C	C	
Jays & Crows				
Blue Jay*	A	A	A	A
American Crow*	A	A	A	A
Larks				
Horned Lark			V	
Martins & Swallows				
Purple Martin*	C	C	U	R
Tree Swallow	U	V	U	
Northern Rough-winged Swallow	U	V	U	V
Bank Swallow	U		U	
Cliff Swallow*	U	U	U	
Barn Swallow*	A	A	C	
Chickadees & Titmice				
Carolina Chickadee*	A	A	A	A
Tufted Titmouse*	C	C	C	C
Nuthatches				
Red-breasted Nuthatch	R		R	U
White-breasted Nuthatch*	R	R	R	R
Brown-headed Nuthatch*	U	U	U	U
Tree Creepers				
Brown Creeper	U		U	U
Wrens				
Carolina Wren*	A	A	A	A
Bewick's Wren	V		R	R
House Wren	U		U	U
Winter Wren	U		U	U
Sedge Wren	R		U	U
Marsh Wren			U	R
Kinglets				
Golden-crowned Kinglet	R		U	U
Ruby-crowned Kinglet	C		C	C
Gnatcatchers				
Blue-gray Gnatcatcher*	C	U	C	U

Thrushes		Sp	Su	Fa	Wi
	Eastern Bluebird*	C	C	C	C
	Veery	R			
	Gray-cheeked Thrush	R			
	Swainson's Thrush	U			
	Hermit Thrush	R		U	U
	Wood Thrush*	U	U	R	
	American Robin*	C	U	C	A
Mockingbirds & Thrushes					
	Gray Catbird*	U	R	U	R
	Northern Mockingbird*	A	A	A	A
	Brown Thrasher*	U	U	C	U
Starlings					
	European Starling*	C	C	C	C
Pipits					
	American Pipit	U		U	U
	Sprague's Pipit				R
Waxwings					
	Cedar Waxwing	U		C	A
Wood-Warblers					
	Blue-winged Warbler	U		U	
	Golden-winged Warbler	U		V	
	Tennessee Warbler	C		R	
	Orange-crowned Warbler	U		U	C
	Nashville Warbler	U		C	
	Northern Parula*	C	C	C	V
	Yellow Warbler	C		U	
	Chestnut-sided Warbler	U		R	
	Magnolia Warbler	C		R	
	Cape May Warbler	V			
	Yellow-rumped Warbler	C		C	A
	Black-throated Green Warbler	C		U	
	Blackburnian Warbler	U		R	
	Yellow-throated Warbler*	C	C	U	
	Pine Warbler*	A	A	A	A
	Prairie Warbler*	U	U	R	
	Palm Warbler	R		R	
	Bay-breasted Warbler	U			
	Blackpoll Warbler	R			
	Cerulean Warbler	R			
	Black-and-white Warbler*	C	U	U	V
	American Redstart*	C	R	R	
	Prothonotary Warbler*	C	C	R	
	Worm-eating Warbler	R		V	
	Swainson's Warbler*	U	U	R	
	Ovenbird	R		V	
	Northern Waterthrush	U		U	
	Louisiana Waterthrush	U	U	R	
	Kentucky Warbler*	U	U	R	
	Mourning Warbler	R		R	
	Common Yellowthroat*	C	U	C	R
	Hooded Warbler*	C	C	C	
	Wilson's Warbler	U		U	V
	Canada Warbler	U		U	
	Yellow-breasted Chat*	C	C	U	
Tanagers					
	Summer Tanager*	C	C	C	
	Scarlet Tanager	U		R	

	Sp	Su	Fa	Wi
Western Tanager			V	
Sparrows, Towhees, Juncos, & Longspurs				
Spotted Towhee				V
Eastern Towhee	U		U	U
Bachman's Sparrow*	R	R	R	R
Chipping Sparrow*	C	U	C	A
Clay-colored Sparrow			V	
Field Sparrow*	U	R	U	C
Vesper Sparrow	R		U	U
Lark Sparrow*	U	U	U	V
Lark Bunting			V	
Savannah Sparrow	C		U	C
Grasshopper Sparrow	V		R	
Henslow's Sparrow				R
Le Conte's Sparrow	U		U	U
Nelson's Sharp-tailed Sparrow			V	
Fox Sparrow				U
Song Sparrow	U		U	C
Lincoln's Sparrow	U		U	U
Swamp Sparrow	U		U	U
White-throated Sparrow	C		C	A
Harris's Sparrow				R
White-crowned Sparrow	U		U	U
Dark-eyed Junco	U		C	C
Lapland Longspur				V
Cardinals & Grosbeaks				
Northern Cardinal*	A	A	A	A
Rose-breasted Grosbeak	C		R	
Black-headed Grosbeak			V	V
Blue Grosbeak*	U	U	U	
Lazuli Bunting	V			
Indigo Bunting*	C	C	C	
Painted Bunting*	U	U	R	
Dickcissel*	R	R		
Blackbirds, Meadowlarks, Cowbirds, Grackles, & Orioles				
Bobolink	R		V	
Red-winged Blackbird*	C	C	C	C
Eastern Meadowlark*	C	C	C	C
Western Meadowlark			V	R
Yellow-headed Blackbird	V			
Rusty Blackbird				R
Brewer's Blackbird	R			R
Common Grackle*	C	C	C	A
Great-tailed Grackle	R	V		
Brown-headed Cowbird*	C	C	C	C
Orchard Oriole*	C	C	R	
Baltimore Oriole*	C	R	U	
Finches				
Purple Finch	U		R	U
House Finch*	U	U	U	U
Red Crossbill	R	V	V	R
Pine Siskin	U		R	U
American Goldfinch	C		C	C
Old World Sparrows				
House Sparrow*	C	C	C	C

Location _____

Date _____

Time _____

Observers _____

Weather _____

Notes

Compiled by:

Louis Debetaz
Carroll Moore

Major Contributor:

Nancy Bird
Other Contributors:

Clarence A. Bassinger
Charles Dean Fisher, Ph.D.
Jack Windsor

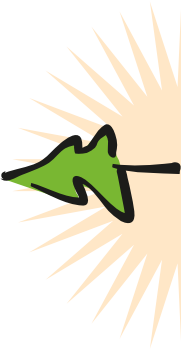
Photography by:

Doug Fincher
Michael Musumeche

Special thanks to:

David Wolf for his review of the early draft of this checklist as well as his extensive contributions of sightings data.
Cliff Shackelford, Texas Department of Parks and Wildlife, for reviewing the draft of this checklist.





DESTINATION LUFKIN

THE LUFKIN CONVENTION & VISITORS BUREAU
1615 S. CHESTNUT, PO BOX 1606, LUFKIN, TEXAS 75901

PRESORTED
STANDARD
U.S. Postage

PAID

Permit No. 36
Lufkin, Texas

TEXAS

LUFKIN