

TAB B

DETERMINATION OF
TOTAL MAXIMUM DEVIATION
And
POPULATION DEMOGRAPHICS
BY
PRECINCT

Demographics
City of Lamesa, Texas

	Actual Pop.	Ideal Pop.	Deviate	Relative Deviation
District 1	1435	1446	-11	-0.74%
District 2	1380	1446	-66	-4.54%
District 3	1470	1446	24	1.68%
District 4	1449	1446	3	0.23%
District 5	1441	1446	-5	-0.32%
District 6	1499	1446	53	3.69%
Total	8674	8674		
Total Maximum Deviation	8.21 %			

Lamesa Demographic Analysis Proposed 12-7-21

Total Maximum Deviation above 10% requires redistricting

Maximum Deviation less than than 5% is desirable if possible.

Ethnic/Racial Data- Total

	Anglo	Black	Am. Ind.	Asian	Hispanic	Haw/Pac Is	Other	Multi	Totals	%
District 1	669	32	3	15	689	0	1	26	1435	16.54%
District 2	221	49	0	4	1088	0	4	14	1380	15.91%
District 3	294	103	1	23	1013	0	5	31	1470	16.95%
District 4	456	47	5	3	924	0	0	14	1449	16.71%
District 5	269	40	5	3	1102	0	2	20	1441	96.13%
District 6	808	25	6	2	640	0	0	18	1499	17.28%
Total	2717	296	20	50	5456	0	12	123	8674	100.00%
% of County	31.32%	3.41%	0.23%	0.58%	62.90%	0.00%	0.14%	1.42%	100.00%	

Ethnic %

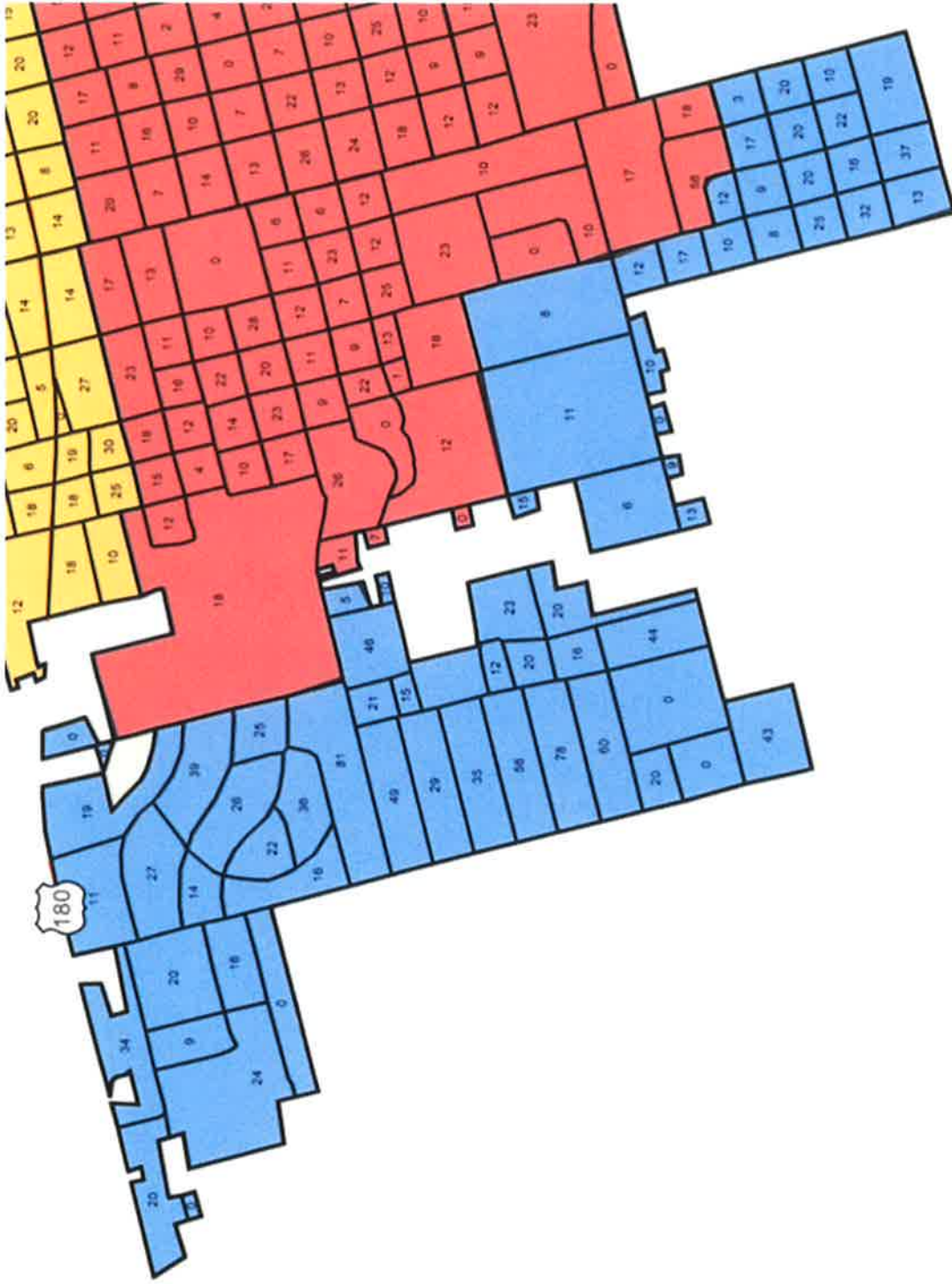
District 1	46.62%	2.23%	0.21%	1.05%	48.01%	0.00%	0.07%	1.81%	100.00%
District 2	16.01%	3.55%	0.00%	0.29%	78.84%	0.00%	0.29%	1.01%	100.00%
District 3	20.00%	7.01%	0.07%	1.56%	68.91%	0.00%	0.34%	2.11%	100.00%
District 4	31.47%	3.24%	0.35%	0.21%	63.77%	0.00%	0.00%	0.97%	100.00%
District 5	18.67%	2.78%	0.35%	0.21%	76.47%	0.00%	0.14%	1.39%	100.00%
District 6	53.90%	1.67%	0.40%	0.13%	42.70%	0.00%	0.00%	1.20%	100.00%

Voting Age Ethnic/Racial Data

	Anglo	Black	Am. Ind.	Asian	Hispanic	Haw/Pac Is	Other	Multi	Totals	%
District 1	561	28	1	12	428	0	1	16	1047	16.62%
District 2	172	40	0	4	790	0	2	8	1016	16.13%
District 3	223	90	0	18	698	0	5	21	1055	16.75%
District 4	383	26	5	3	622	0	0	7	1046	16.61%
District 5	198	37	1	2	750	0	2	8	998	15.84%
District 6	682	21	6	2	414	0	0	12	1137	18.05%
Total	2219	242	13	41	3702	0	10	72	6299	100%
% of City	35.23%	3.84%	0.21%	0.65%	58.77%	0.00%	0.16%	1.14%	100%	

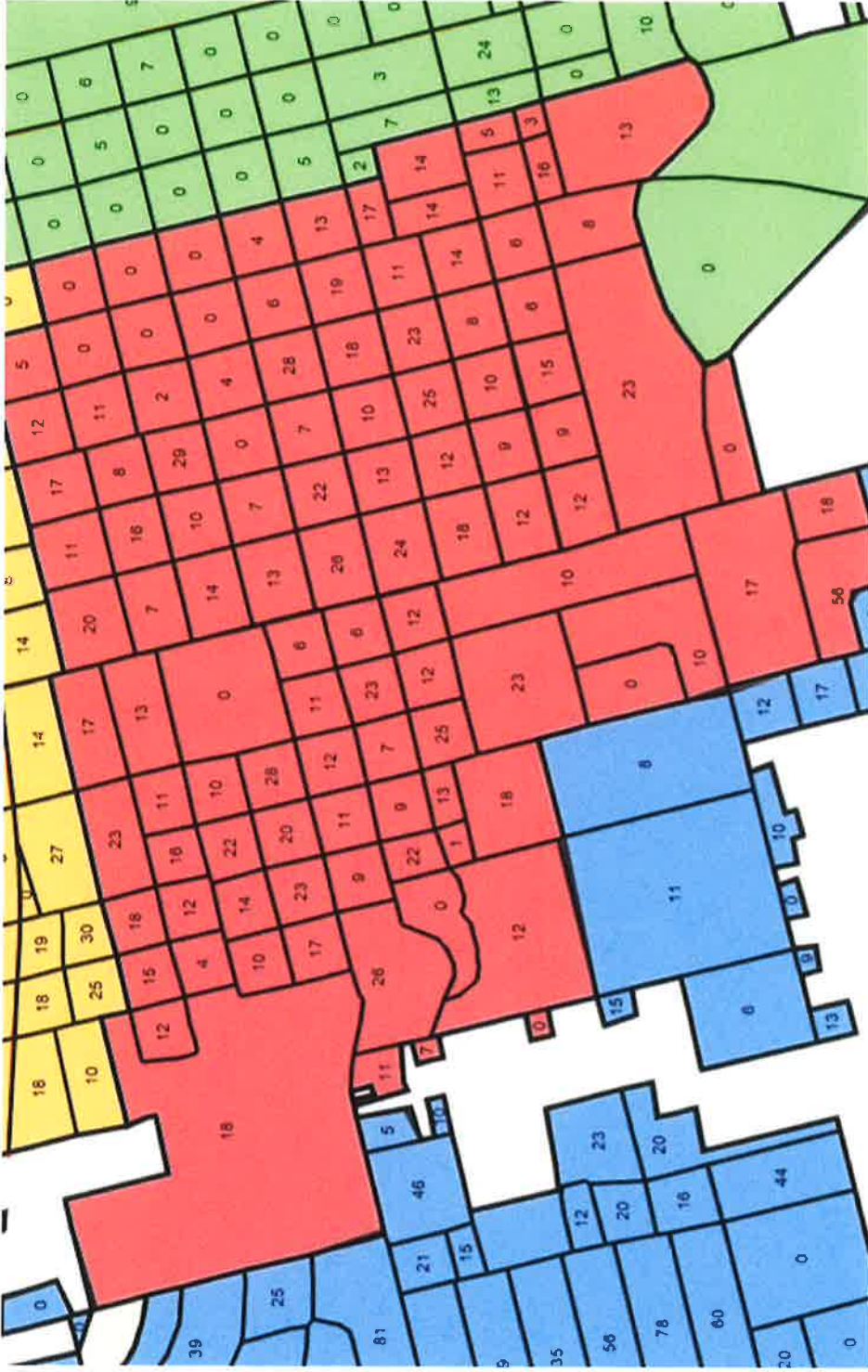
Voting Age %

District 1	53.58%	2.67%	0.10%	1.15%	40.88%	0.00%	0.10%	1.53%	100.00%
District 2	16.93%	3.94%	0.00%	0.39%	77.76%	0.00%	0.20%	0.79%	100.00%
District 3	21.14%	8.53%	0.00%	1.71%	66.16%	0.00%	0.47%	1.99%	100.00%
District 4	36.62%	2.49%	0.48%	0.29%	59.46%	0.00%	0.00%	0.67%	100.00%
District 5	19.84%	3.71%	0.10%	0.20%	75.15%	0.00%	0.20%	0.80%	100.00%
District 6	59.98%	1.85%	0.53%	0.18%	36.41%	0.00%	0.00%	1.06%	100.00%



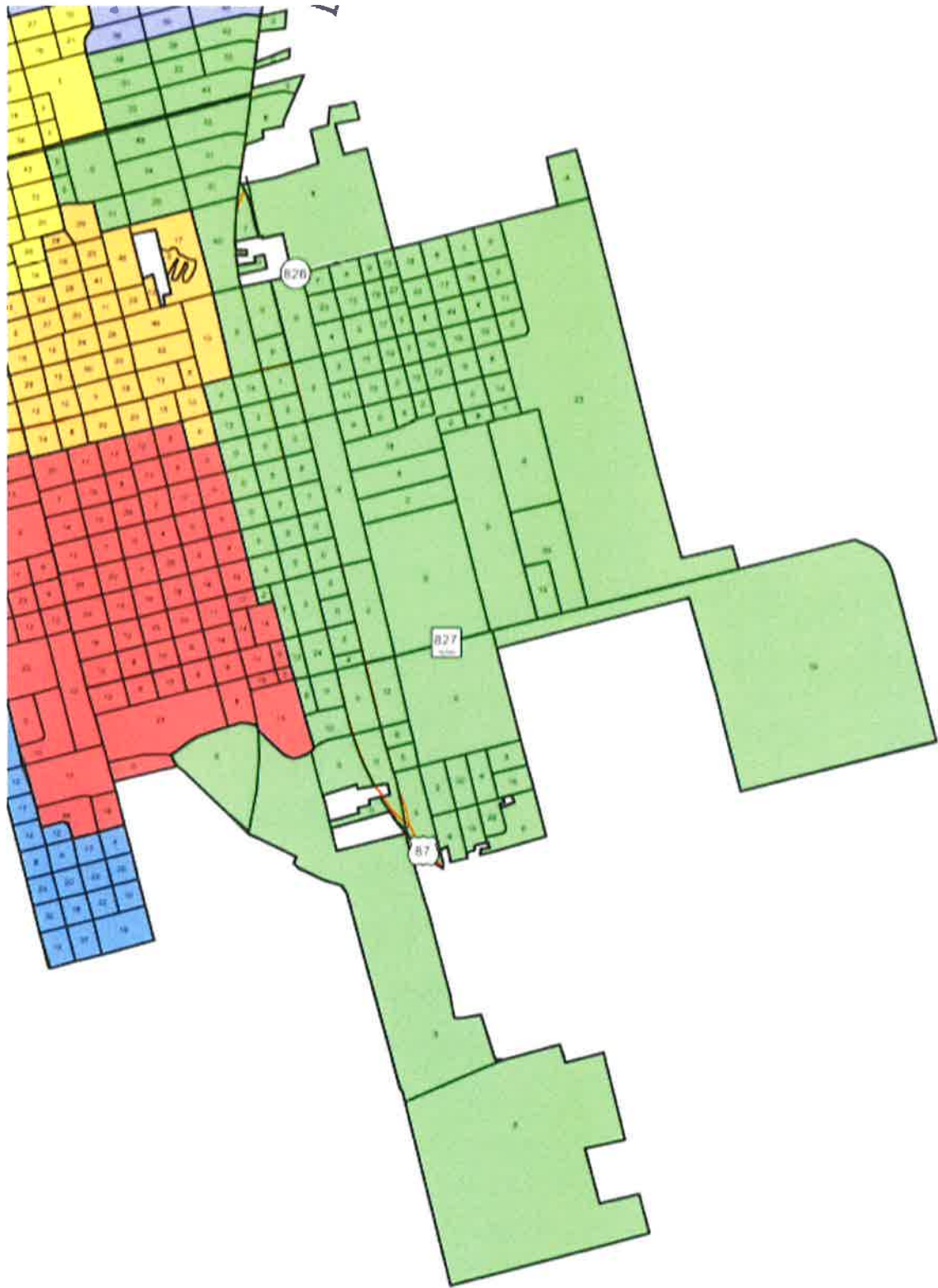
District 1

Voting Age Ethnic/Racial Data	Anglo	Black	Am. Ind.	Asian	Hispanic	Haw/Pac Is	Other	Multi	Totals	%
District 1	561	28	1	12	428	0	1	16	1047	16.62%



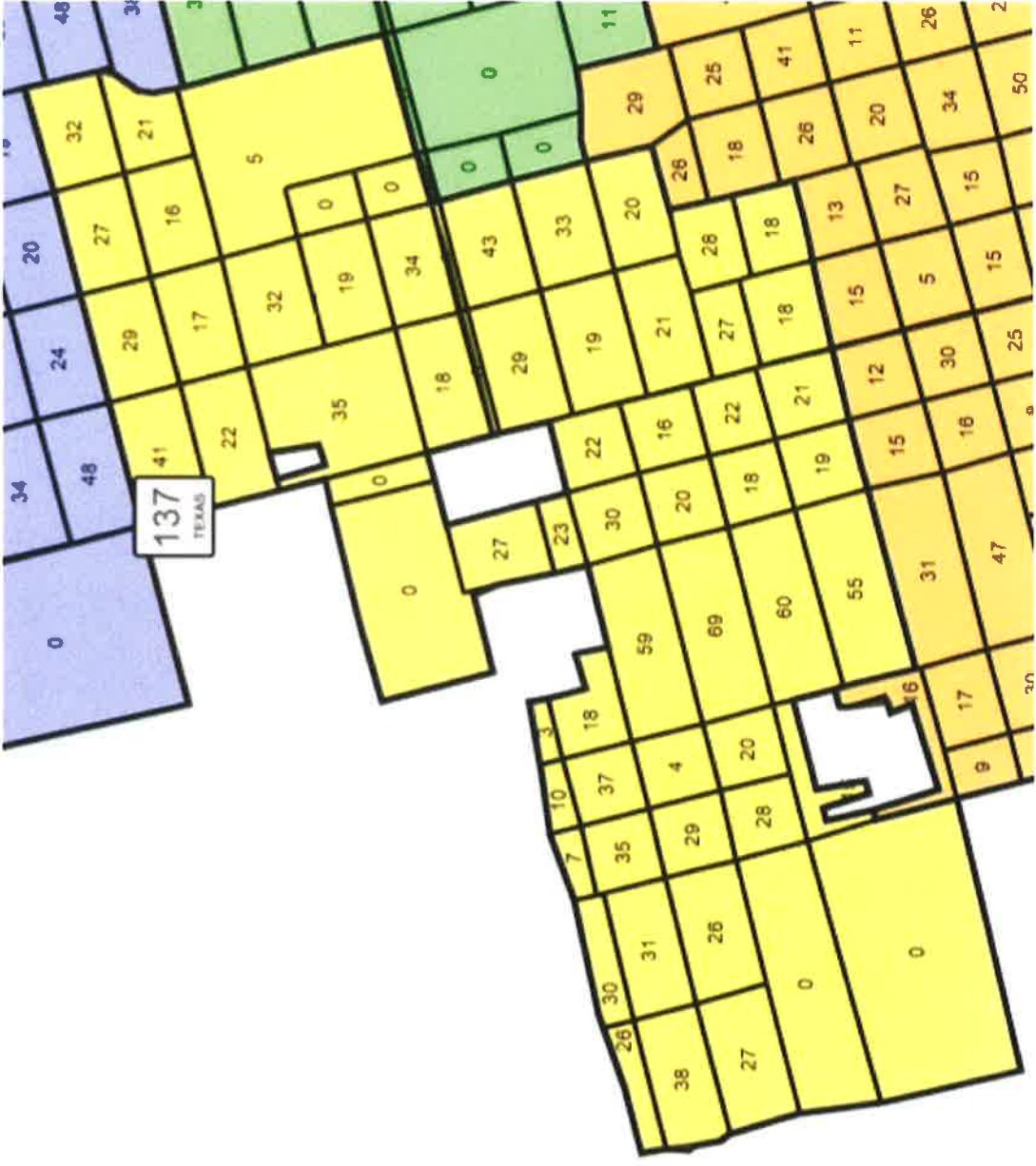
District 2

Voting Age Ethnic/Racial Data	Anglo	Black	Am. Ind.	Asian	Hispanic	Haw/Pac Is	Other	Multi	Totals	%
District 2	172	40	0	4	790	0	2	8	1016	16.13%



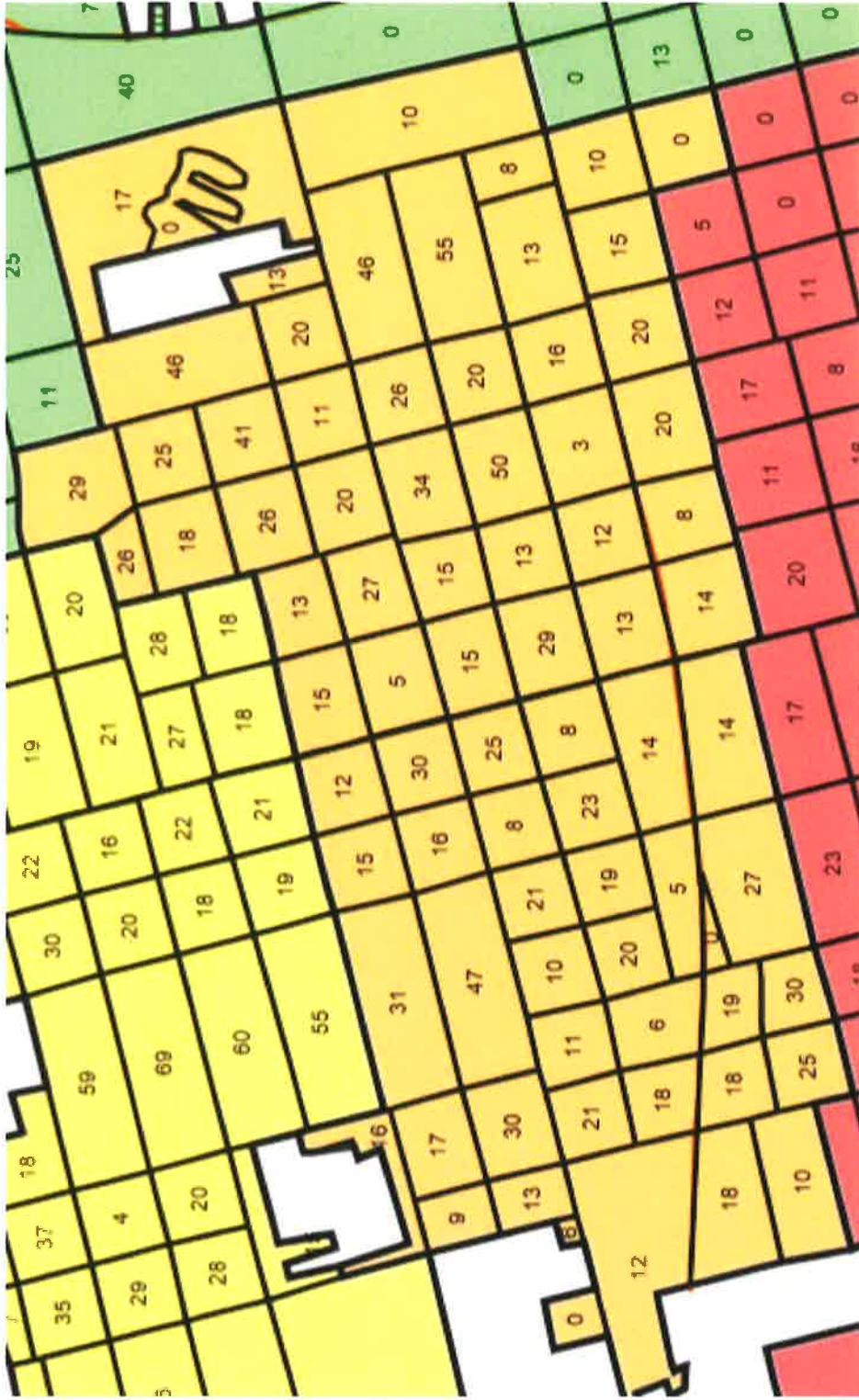
District 3

Voting Age Ethnic/Racial Data	Anglo	Black	Am. Ind.	Asian	Hispanic	Haw/Pac Is	Other	Multi	Totals	%
District 3	223	90	0	18	698	0	5	21	1055	16.75%



District 4

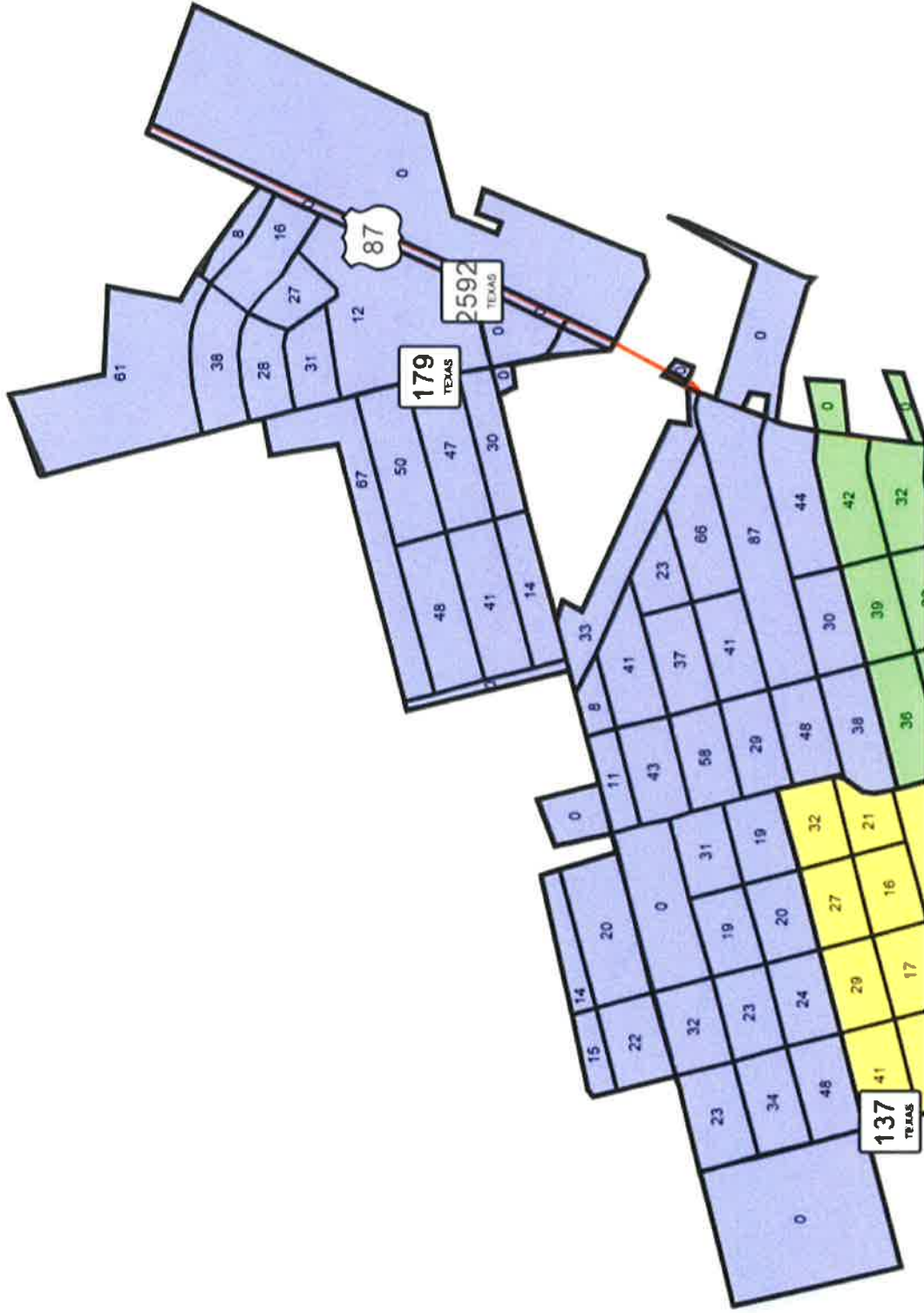
Voting Age Ethnic/Racial Data	Anglo	Black	Am. Ind.	Asian	Hispanic	Haw/Pac Is	Other	Multi	Totals	%
District 4	383	26	5	3	622	0	0	7	1046	16.61%



District 5



Voting Age Ethnic/Racial Data	Anglo	Black	Am. Ind.	Asian	Hispanic	Haw/Pac Is	Other	Multi	Totals	%
District 5	198	37	1	2	750	0	2	8	998	15.84%



District 6



Voting Age Ethnic/Racial Data	Anglo	Black	Am. Ind.	Asian	Hispanic	Haw/Pac Is	Other	Multi	Totals	%
District 6	682	21	6	2	414	0	0	12	1137	18.05%