

NEWSLETTER

S P R I N G 2 0 2 1

Dear Neighbors and Friends,

As we continue to navigate through the Covid-19 pandemic, I am proud to say that we are continuing our operations with high levels of service. Public meetings are still being held on Zoom. We continue to adhere to St. Louis County guidelines with regards to social distancing and mask policies. Our staff has adapted well to working remotely and I thank them for their dedication.

While there has been minimal impact from an operational standpoint, our sales tax revenue has declined as have the calls for ambulance service. While this affects our bottom line, we currently have the funds, in the General Fund and in our dedicated funds (Capital, Road and Bridge and Stormwater) to execute projects and provide services. We continue to work to improve and innovate operations to maximize our performance while being mindful of your tax dollars.

One of our most important advances is our ability to increase police presence in our neighborhoods and

businesses. We have been able to implement this due to our newly formed partnership with West Central Dispatch Center. By joining the dispatch center, we were able to hire an additional patrol officer. Rest assured, our dispatch service remains the same and there is always an officer in the police station during daytime hours and the police lobby is open in the evening with a direct line to officers on duty. Be sure to update your important numbers with our **new non-emergency number for Police 737-4600**. Our **non-emergency Fire** number remains the same **993-0181**.

Congratulations to Sam Zes, Finance Director, for earning the City the Distinguished Budget Award from the Government Finance Officers Association. This is the highest honor awarded to government finance for transparency and presentation of budget documents. Many thanks to our City staff, Shelly Benson, Shelly Todd, Lori Wrobel and Elizabeth

Weimar for their hard work in obtaining this award.

Zoning and Planning has begun their review of the Comprehensive Plan Draft. We remain committed to our City's strong zoning laws and Ladue's unique character while working to make our community conducive to walking and connectivity. Please join in on the Zoom Z&P meetings to make your voice heard. We welcome your input and opinions.

The Ladue Cellular Service Advisory Committee continues to make good progress in their mission to improve cell service. I know we all look forward to their findings and their recommendations.

Our restaurants and retailers have been hit hard by Covid-19. Please join me in continuing to support our neighbors, retailers, and restaurant owners. You can make a tremendous impact on our community by choosing to shop and eat locally.

I look forward to the day that we can be together in one room again! Take care.

Mayor Nancy Spewak



Public Works Department

This year, the City will be contracting for the following projects:

- Clayton Road ADA sidewalk improvements Phase III; Eversdale to Lindbergh. *Construction: Spring 2021.* This project also will include the reconfiguring of the medians on westbound Clayton at Lindbergh to increase the turning lane capacity.
- Robin Hill/McKnight Lane/Brookside Streambank Stabilization project. This creekbank project is the City's 2nd project to be constructed as part of the Citywide Stormwater Implementation Plan. *Construction starts: Summer 2021*
- Willow Hill Stormwater Improvements. This pipe and inlet infrastructure will be the City's 3rd stormwater project. *Construction is planned to begin mid-2021.*
- Microsurfacing of Litzsinger Road from Lindbergh to McKnight and westbound Clayton Road east of Lay. Microsurfacing is a latex modified slurry seal and 2021 marked the 6th year of the program.

Projects that are in the engineering design phase include:

- Dielman Road sidewalk improvements and pavement rehabilitation (80% Federally Funded) *Construction: 2023*
- Warson Road at Conway; signalization and intersection improvements (80% Federally Funded) *Construction: 2023*

Projects that are in the planning phase include:

- Conversion of Edie's Mulch Site into a passive park which will include a walking trail. The City will apply for a grant in August 2021 and then if successful, will begin the design phase.
- Rodes Park Master Plan; Planning Open House meetings held in January & February are identifying priorities for minor improvements to this small park located at Warson and Ladue.

Arbor Day will be held on *April 24th from 9 – 11 am* at two locations for social distancing: Rodes Park and at the Public Works Building at 9345 Clayton Road. This outdoor event will include free tree saplings, an 'Ask the Arborist' booth, and a Tree Scavenger Hunt. More information to follow on the City's website. Please join us for this event!

For additional information about the City's Public Works Department, please visit the Public Works page of the website at: <http://www.cityofladue-mo.gov/> or call us at (314) 993-5665.

Anne Lamitola, P.E., Director of Public Works

Police Department News

The City of Ladue Police Department is excited to announce the implementation of our Body Worn Camera Program. After an extensive research period where our department obtained bids from various companies and participated in a "Body Worn Camera Pilot Program," the Ladue City Council unanimously voted approval of the purchase of body worn cameras from BodyWorn by Utility, in December of 2020.

During the Fall of 2020, six of our officers were outfitted with and tested body worn cameras from BodyWorn by Utility. This is the same company who outfitted our marked patrol vehicles with new in-car camera video systems and microphones early last year. Additionally, BodyWorn by Utility is the provider of body worn cameras in several surrounding jurisdictions to include St. Louis County PD, Creve Coeur PD, and Des Peres PD to name a few. The decision to choose the BodyWorn by Utility system was based on local support, reliability, and ease of use.

The Ladue Police Department's use of body worn camera technology will be a valuable tool in accurately documenting events, conditions, and statements made during enforcement actions. Although body worn cameras do not capture everything the officer sees, they will be beneficial for prosecution of criminal cases and increase our departments ability to review procedures and training needs. The use of body worn cameras also increase the transparency and accountability of our police officer's actions, while providing an opportunity to capture the great service our police officers provide on a daily basis. Additionally, we believe this equipment will enhance the safety of both citizens and officers alike.

We are in the process of outfitting every Ladue Patrol



Officer with the appropriate equipment and hope the body worn camera program is fully operational by the Spring of 2021. The implementation of the body worn camera program is yet another step the Ladue Police Department has taken to ensure we continue providing the highest levels of service and professionalism in all our actions.

Sincerely, Ken Andreski, Jr., Chief of Police

Student Opportunities Network

The Student Opportunities Network is a platform that connects high school and college students to available work, internship, and volunteering positions with local businesses and organizations. The initiative also provides a depth of student resources to help students navigate the college application process. After its launch in 2020, the Student Opportunities Network has already helped over 200 students secure work, internship, and volunteering positions. This year, the Network will continue providing opportunities and create a virtual mentorship program that allows students to engage with and ask questions to community professionals in their areas of interest. The initiative has already partnered with a variety of local organizations, such as the Ladue News and the Ladue Education Foundation, and is always open to forming more partnerships. If you or your organization would like to get involved to provide work, internship, volunteering, or mentorship opportunities to students, please contact Giuseppe Di Cera at gdicera44@gmail.com.

Student Opportunities Network website: <https://laduestudentopptsnet.wixsite.com/ladue>

Is There a Creek or Stream on Your Property? *Stream Maintenance Guidelines*

Do you have a creek or stream on your property? If you do, then you are responsible for maintenance of the stream just like any other part of your property. Neither the City nor MSD is responsible for creeks that are located on private property. MSD will investigate blocked creek complaints; however, MSD will only remove debris that is deemed a flooding threat. MSD will not remove typical debris or branches. The property owner is responsible for removing typical debris and branches to keep the creek clean and clear of obstructions just as you would remove them from other parts of your lawn.

A healthy stream can be a wonderful asset to any property. It has aesthetic value that can add real value to your property. A healthy stream can provide habitat and greenways for animals to travel through. While it does provide storm water relief, it can also recharge groundwater.

On the other hand, an unhealthy stream can lower property values. The goal of this article is to provide landowners with some guidelines on activities that adversely affect a stream, and also provide some Best Management Practices (BMPs) for healthy streams.

Some BMPs include:

- Remove woody debris to prevent streambank erosion and accumulation that may lead to clogging of culverts.
- Never dump gasoline, motor oil, antifreeze, battery acid, or other automotive fluids into a stream or storm drain.
- Dispose of unusable paints and paint products at your local household hazardous waste facility.
- Avoid washing your car on a paved driveway or street that drains to a stream. Use a commercial car wash.
- The best way to drain your swimming pool is to let the chlorine dissipate by allowing the water to sit for up to two weeks and then drain onto landscaping.
- If your downspouts are piped to a stream, consider redirecting the flow onto a grassed area to allow infiltration.
- ***Never dump grass, leaves or tree limbs on the banks of the stream or into the stream.*** Please utilize the City's leaf and brush collection programs.
- Do not overfertilize your lawn, so chemicals do not runoff into the stream.

One landowner can make a difference on his or her own property. However, the problems seen in the stream are most often symptoms of changes or actions taking place elsewhere in the watershed. The City is part of the Deer Creek watershed. You may want to become active on a watershed basis. Information on the Deer Creek Watershed Alliance can be found at <https://www.deercreekalliance.org/>.

If you are a creek owner, please remember to include this portion of your property in your landscape maintenance plans!

Information for this article was taken from Stream Care Guide: An Owner's Manual Designed for Streamside Landowners published by the Soil and Water Conservation District of St. Louis County, Missouri. The manual can be found at <https://dnr.mo.gov/pubs/pub1192.pdf>.

Fire Department News



By now most of us have heard the year 2020 referred to as a “giant dumpster fire”. This, along with several incidents over the past few years inspired me to provide an article to the residents regarding dumpster fires. More recently, the City of Ladue Fire Department has responded to six (6) dumpster/trash can fires within our city limits. Five of these incidents involved large roll-off dumpsters that were being used for construction projects while another was a large trash can that was on fire on school property. Out of the five (5) construction dumpsters that were on fire, ALL five of them were well or fully involved fires. In two (2) of these cases the fires happened while construction crews were still on the job site. This does help as those fires tend to be noticed quicker, reported to 911 faster and our units can respond to extinguish before an adjoining structure can catch fire. The other three (3) incidents happened late at night or on a weekend at times in which no construction workers were on site. These fires have a greater tendency to be much larger and go unnoticed for a longer period.

Construction dumpsters typically have a large amount of combustible waste in them from scrap wood, pallets, demolition waste to paints and solvents. While smoke itself is always dangerous to firefighters these fires tend to add an extra element of danger due to the materials that are typically found in these dumpsters. They can also be very time-consuming fires for the firefighters to extinguish due to the hazards of overhauling or checking that the fire is completely out before we return in service. Many times, we will just flood the dumpster with large amounts of water rather than sift through the materials and risking injury. These fires can start from cigarettes being tossed into the dumpster, oily rags that

spontaneously combust to being set intentionally by juveniles and/or arsonists. If we arrive on a dumpster fire and the risk of spreading to an exposure is minimal you will most likely take notice that our crews are operating in a slower and much more methodical manner. Crews will be wearing their full fire gear with self-contained breathing apparatus (masks). They will most likely be setting up a water supply from a fire hydrant due to the possible large quantity of water needed to extinguish. This may require multiple firetrucks but can be handled by one firetruck depending on the circumstances. Crews will most likely be attacking the fire from a distance and may be lobbing water into the dumpster until they can approach the fire in a much safer fashion. Again, these can be time consuming incidents.

How can we be safer when it relates to construction projects? Construction dumpsters should be placed as far away from other structures as possible. The adopted fire code requires that dumpsters be located no less than 5-feet from any combustible walls, openings or combustible roof eave lines. As the

fire grows within the dumpster, it will no longer be contained within the four sides of the dumpster and will begin to grow in height. Depending on wind conditions (direction and speed) it may begin to move towards combustible exposures causing them to become involved as well. Even five feet is very close to a structure and should beg the question of how much farther can we safely place the dumpster? Good oversight from the property owner or the contractor ensuring proper distance is critical. Typically, the fire department will not catch a dumpster being too close to a structure until they respond on the actual incident. The Fire Marshal will occasionally catch these and require that the contractor have the dumpster relocated. If you ever have a question or concern regarding these dumpsters, please do not hesitate to reach out to the fire department at 314-993-0181.



Jeff Johnson
Assistant Fire Chief

Let Freedom Ring

On September 11, 2007 the bronze sculpture that sits in front of Ladue City Hall, LET FREEDOM RING, was formally dedicated. The sculpture, sculpted by internationally recognized Missouri sculptor, Harry Weber, was donated to the City of Ladue by former Ladue Mayor (1975 – 1995) Edith J. Spink. Dignitaries in attendance included Mayor Spink, Mayor Irene Holmes, Dr. William H. Danforth, Mr. Joseph H. White and Harry Weber.



Ladue resident and Chief of Protocol Mr. Joseph H. White welcomed everyone to the formal dedication. Former Mayor Edith J. Spink thanked everyone for attending, indicating that it was an honor to underwrite the sculpture. Longtime Ladue resident Dr. William H. Danforth was the keynote speaker at the dedication. He noted that the sculpture was to be dedicated “to the blessings that bind us together as Americans and to celebrate our freedoms and liberties”. Sculptor Harry Weber noted that the sculpture was being dedicated on the 6th anniversary of the 9/11/2001 attack and was being dedicated

both to commemorate 9/11/2001 and to represent the hope for the future. Current Mayor Irene S. Holmes formally accepted the sculpture on behalf of the City of Ladue. At the end of the formal dedication Ladue resident Mr. Richard “Randy” Woods fired a large cannon to mark the conclusion of the dedication.

The sculpture actually consists of two sculptures and a bronze plaque. One sculpture depicts a teenage boy with his left hand on the shoulder of a young girl, both looking up at the American flag with their right hands over their hearts. The boy was Mrs. Spink’s nephew from Grosse Point, Michigan, P.T. Maxwell. The girl was Mrs. Spink’s niece, Nina Swift ... daughter of current Ladue residents Lindsey and Bryan Swift. The second sculpture is of a Scottish Terrier and was modeled after Mrs. Spink’s dog, Gorgeous George. In front of the sculpture is a bronze plaque set on a marble base that reads:

LET FREEDOM RING

Given by

Johnson and Edith Spink

Dedicated September 11, 2007

Sculptor: Harry Weber

SCULPTURE TRIVIA: The name “JOE WHITE” is engraved onto the backside of the boys belt. Harry Weber included this inscription to recognize Joe White’s efforts to connect Mrs. Spink with Harry Weber, as well as Mr. White’s request that both the boy and the girl be looking upward toward the raised flag with their right hands over their hearts.

Mental Health Resources

Amidst a pandemic, the influences of mental health are ubiquitous. According to the American Foundation for Suicide Prevention, 53% of people experienced anxiety and sadness in higher levels than they did prior to the pandemic. Not surprisingly, with the pandemic exacerbating the already daunting task of navigating school, extracurriculars, and college applications, the subject of mental health has infiltrated the lives of students. As high school students ourselves, the members of the Mayor’s Youth Advisory Council are cognizant of the obstacles of assimilating into a COVID-19 riddled world. However, with this subject being more prominent than ever, it is imperative that we perpetuate the stigma surrounding mental health through respectful conversation and awareness.

Consequently, with the main priorities of affordability and accessibility, the Youth Council is working to compile a list of resources in hopes that it may alleviate the pressures of seeking help and be rendered useful for boosting mental well-being. On the note of increasing accessibility to resources, the Youth Council is also working to incorporate a series of mental health hotlines onto the City of Ladue’s website — which can be found at <https://www.cityofladue-mo.gov/>.

Staying afloat during an unprecedented pandemic is not an easy task. For this reason, the Youth Council encourages our fellow peers to seek solace in strength of community and to regularly check in on friends and family.

City of Ladue Receives GFOA's Distinguished Budget Presentation Award

This award represents a significant achievement by the City. It reflects the commitment of the governing body and staff to meeting the highest principles of governmental budgeting. In order to receive the budget award, the City had to satisfy nationally recognized guidelines for effective budget presentation. These guidelines are designed to assess how well an entity's budget serves as:

- a policy document
- a financial plan
- an operations guide
- a communications device

Budget documents must be rated "proficient" in all four categories, and in the fourteen mandatory criteria within those categories, to receive the award.

When a Distinguished Budget Presentation Award is granted to an entity, a Certificate of Recognition for Budget Presentation is also presented to the individual(s) or department designated as being primarily responsible for having achieved the award. The Certificate has been presented to the City's Finance Department.

There are over 1,600 participants in the Budget Awards Program. The most recent Budget Award recipients, along with their corresponding budget documents, are posted quarterly on GFOA's website. Award recipients have pioneered efforts to improve the quality of budgeting and provide an excellent example for other governments throughout North America.

Government Finance Officers Association (GFOA) advances excellence in government finance by providing best practices, professional development, resources and practical research for more than 20,500 members and the communities they serve.



*Sam Zes, City of Ladue
Director of Finance*

Attention Trustees

Are you a Trustee for your neighborhood association? Does the City have your current contact information? Please contact Lori Wrobel at City Hall with updated information at 314-993-3439 or lwrobel@cityofladue-mo.gov.

Email Notification Service

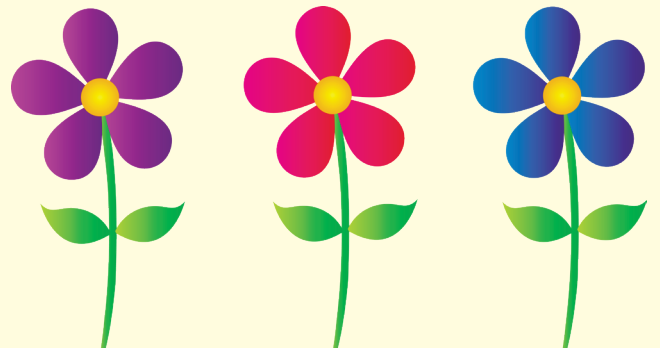
We encourage you to subscribe to the City's "Email Notification" service. This service allows you to receive an email notification for the following categories:

1. City Council and Committee/Commission Meeting Agendas
2. Crime Alerts
3. Ladue Current Events
4. Lane Trustee Notifications

The sign-up bar is located on the home page at the center left and lower right side at www.cityofladue-mo.gov.

Ladue Garden Club

We invite you to visit the city's website at <http://www.cityofladue-mo.gov/residents/garden-club-314> for conservation news and tips provided by the Ladue Garden Club.



Arbor Day Activity



Name: _____

Missouri Trees

C H I N K A P I N O A K F Z W R G G
F L S S H O R T L E A F P I N E Q C
B W D O U G L A S S F I R N X Q U H
L P H A Z Q B A L D C Y P R E S S B
A T E I C W R I V E R B I R C H F R
C I M C T L M Z W H I T E O A K Z E
K S A R A E G N Z R E D C E D A R D
G X P U W N P D W I V A Q B K E R B
U F L O W E R I N G D O G W O O D U
M C E B L N R H N I B U C K E Y E D
X W W A L N U T I E C G N Y S T D P
E A M E R I C A N S Y C A M O R E W

Find the following words in the puzzle.

Words are hidden → ↓ and ↘ .

AMERICANSYCAMORE
BALDCYPRESS
BLACKGUM
BUCKEYE
CHINKAPINOAK
DOUGLASSFIR

FLOWERINGDOGWOOD
MAPLE
PECAN
REDBUD
REDCEDAR
RIVERBIRCH

SHORTLEAFPINE
WALNUT
WHITEOAK
WHITEPINE

City of Ladue
9345 Clayton Road
St. Louis County, MO 63124

PRSRT STD
U.S. POSTAGE
PAID
ST. LOUIS, MO
PERMIT #2710

City Council Members

WARD 1 STACEY KAMPS AND JOHN HOWELL

WARD 2 JOHN FOX AND PATRICK HENSLEY

WARD 3 HAL BURROUGHS AND BILL BRENNAN

(CONTACT INFORMATION IS AVAILABLE ON THE CITY
WEBSITE, www.cityofladue-mo.gov)



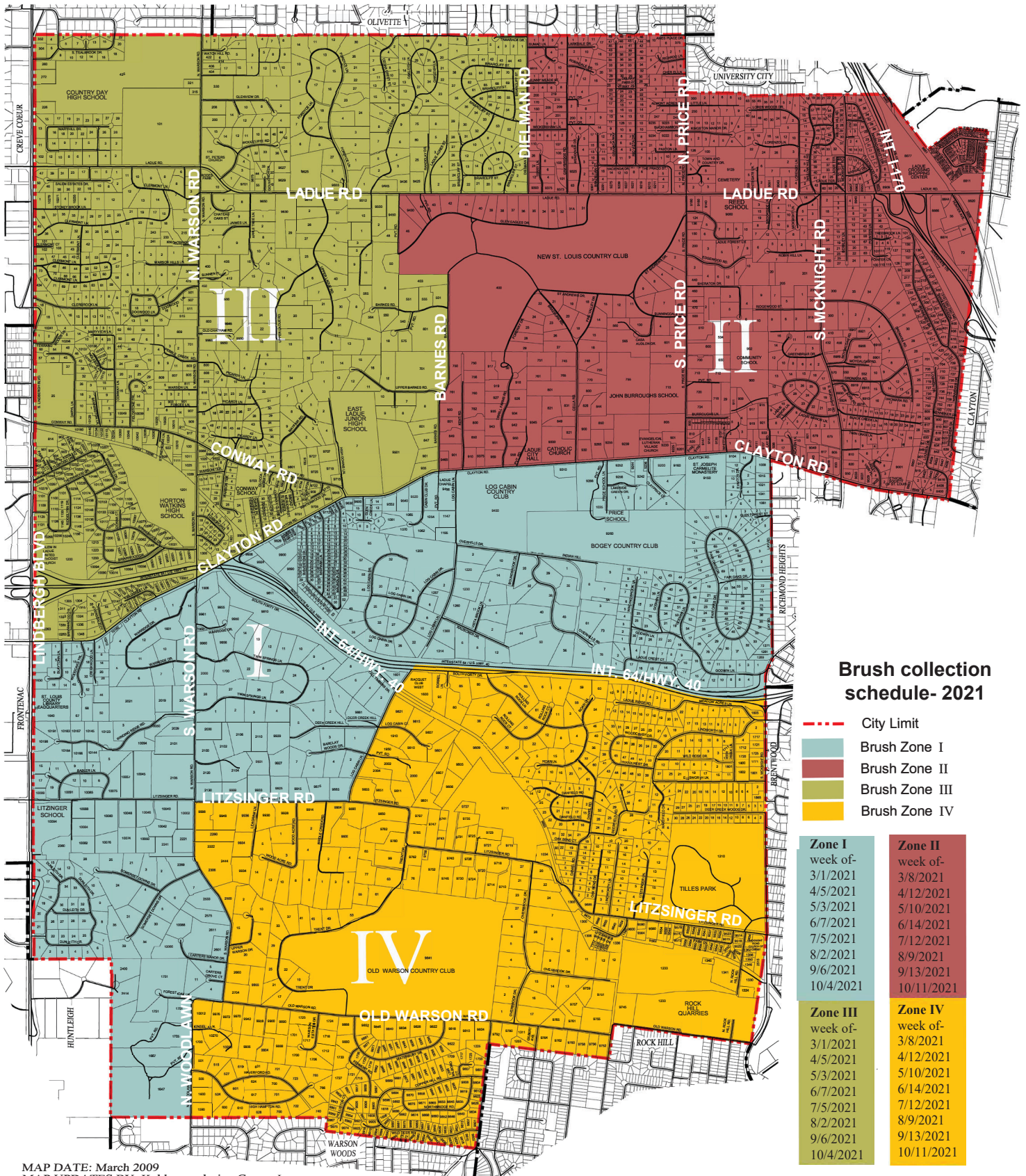
City Directory

MAYOR	314-993-3439 ext. 245
ADMINISTRATION	314-993-3439
BUILDING	314-997-6308
MUNICIPAL COURT	314-993-3919
PUBLIC WORKS	314-993-5665
PUBLIC WORKS – FAX	314-994-3195
EMERGENCY	911
POLICE (non-emergency)	314-737-4600
POLICE (administration)	314-993-1214
FIRE (non-emergency)	314-993-0181
FIRE – FAX	314-993-0412
FAX (all other departments)	314-993-5652
Website	www.cityofladue-mo.gov
E-MAIL	lrider@cityofladue-mo.gov nspewak@cityofladue-mo.gov



City of Ladue Brush Map

KdG
Kuhlmann *design* Group



MAP DATE: March 2009
MAP UPDATES BY: Kuhlmann design Group, Inc.