

NEWSLETTER

F A L L 2 0 1 7

Neighbors and Friends,

I would like to take this opportunity to introduce you to Ladue's newest Chief of Police, Ken Andreski, Jr. as he takes the reins from retiring Chief Rich Wooten. Chief Andreski has been a member of the Ladue Police force for the last fifteen years. He has served in just about every capacity in the department, including a duty as our School Resource Officer. Chief Andreski is a graduate of the Northwestern University School of Police Staff and Command and has a masters degree in human resource management.

Chief and his wife, Beth, have three children and Beth is a Patrol Sergeant in the City of Olivette. Chief Andreski plans to be a visible figure in our community, so please reach out and introduce yourselves to him when you see him out and about. He will continue and strengthen Ladue's commitment to community policing. We are incredibly fortunate to have someone of his caliber to lead the fine men and women who are your Ladue Police Department. I couldn't be more pleased and confident in his leadership.

The City Council joins me in extending a tremendous thank you to our retiring Chief, Rich Wooten. Chief Wooten served the City of Ladue for 32 years. Starting out as a patrol officer, he also served as Ladue's School Resource Officer, as a Sergeant and Lieutenant, prior to serving as your Chief for the past eight years. The integrity of

the Ladue Police Department was his utmost goal and I am proud to say we have all benefitted from his leadership.

Although he is no longer a sworn police officer, you will continue to see Rich Wooten on occasion as he has agreed to work with me and the Council on a consultancy basis for special projects through the Administration Department of the City.

Building projects in Ladue continue at a quick pace. We are accepting drawings for many additions to existing homes and some lovely new homes. Ladue is a community with a strong zoning code and a long history of a high level of standards. To that end, our Architectural Review Board is updating and clarifying our Architectural Guidelines and staff is working with Council to do the same for our Landscape Review Guidelines. Our intent is to maintain the highest standard of architectural integrity while not limiting specific architectural styles or your own personal taste.

If you are planning a building project, please visit our website to familiarize yourself with the City's procedures or call or stop in the Building Department with questions. Your architect and contractor should familiarize themselves with our requirements and procedures to ensure that the various required approvals are built in to your project timeline and budget. We are here to

help and the more you, as homeowners, understand the procedures and guidelines, the smoother your project will be.

Leaf season is in full swing although they seem to be falling later this year. Please be sure to check the website for your zone pick up. Our Public Works Crews always run the scheduled pickups and sometimes they run ahead of schedule. If you see crews in your neighborhood prior to the published date, rest assured that they will return on the scheduled week as well.

As always, remember to shop Ladue. Sales tax revenue accounts for nearly 20% of our budget. You are positively affecting our bottom line every time you make a local purchase. Plus, it's fun to shop in Ladue! Our storekeepers are helpful and friendly. Bring your friends, stop for lunch and make a day of it!

City Hall is open from 8 to 5 Monday through Friday. We are here to serve you so please let us know if we can assist you in any way. If you are a new resident, we would love to meet you.

Best,

Mayor Nancy Spewak

Mayor Nancy Spewak



Public Works Department Update

It's hard to believe that as of November 26, 2017, I have been the Director of Public Works for the City of Ladue for five years. The time certainly has gone by quickly, and in the last five years, the Public Works Department has completed many projects and new initiatives. Here are some of the highlights:

Sidewalks and Roadway

- Implementation of the 2012 Citywide sidewalk plan including **NEW** City installed sidewalks on Litzsinger between McKnight and Deer Creek, Ladue Road between Salem Estates and Warson Road, Warson Road between Ladue Road and the City's northern municipal boundary, McKnight Road between Clayton Road and Ladue Road, Conway between Daryl Lane and Lindbergh Blvd.
- Replaced sidewalks on Price Road between Delmar and Clayton
- Obtained Federal Funding for the addition of sidewalks and repaving on Lay Road between Clayton and McKnight (2018 construction)
- Repaved Litzsinger Road from Lindbergh to McKnight, McKnight Road from Ladue to Clayton, and Price Road between Delmar and Clayton
- Replaced two bridges on McKnight Road
- Applied asphalt pavement maintenance treatments on Conway Road, Warson Road, Old Warson Road, Woodlawn, McKnight, and Price Roads
- Developed concepts for pedestrian facilities connecting the Clayton Road business district to neighborhoods south of South 40 Drive and continue
- Developing an ADA Self-evaluation and multi-year Transition plan for City sidewalks as well as City owned facilities

Storm Water

- Developed a multi-phased Storm Water Program over the last three years that has included:
 - Citywide storm water needs assessment which involved identifying storm water problems and stream health throughout the City.
 - Establishment of a Storm Water Advisory Committee who worked with the Public Works Department and the City's consultant to develop a storm water ordinance which officially established the storm water program
 - Development of a Storm Water Master Plan which identified \$114 Million in projects
 - Development of 5-year implementation plan to begin January 1, 2018 which includes the highest priority projects identified in the Master Plan
 - Engaged the public during all phases of the Storm Water program
 - Hired a part-time storm water engineer on City staff, Pete Merten, to manage the implementation of the storm water projects

Other initiatives

- Increased the duties of Public Works maintenance staff to include concrete sidewalk pavement replacement, annual Citywide crack sealing, and small storm water maintenance & repair projects
- Trained a Public Works employee to become a Certified Arborist who performs tree removal permit reviews, has been developing an Emerald Ash Borer survey of City owned trees, and other tree related duties
- Beautification and Parks
 - Evaluated and developed standards for plantings and improvements for public spaces and rights-of-way
 - Installed memorial stepping stones in Rodes Park

If you have any comments, concerns, or questions about the Public Works Department, please contact us at (314) 993-5665.

Best regards,
Anne C. Lamitola, P.E.
Director of Public Works

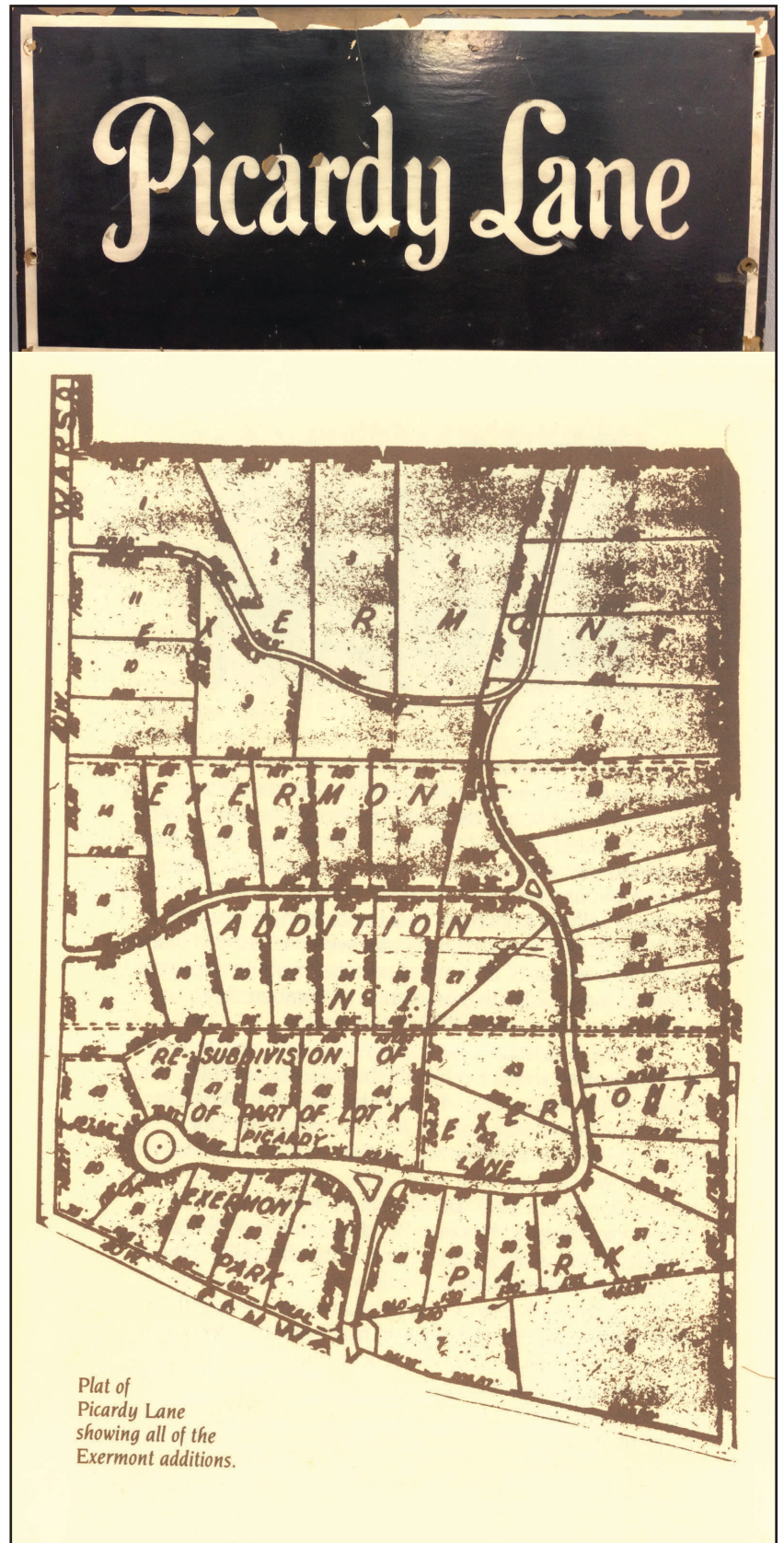
One of several defining characteristics of the City of Ladue are the serene lanes, subdivisions and neighborhoods that comprise our residential community that was incorporated on December 1, 1936. One of the premier Ladue neighborhoods in the City of Ladue is the Picardy Lane neighborhood, located at the intersection of Conway and Warson Roads. Nearly century old stone pylons mark the Picardy Lane entrances from both Conway and Warson Roads.

Picardy Lane was originally laid out when Ladue was still a village. In 1923 Alma Luedloff sold part of the Barber Estate (bought in 1892) to the Interstate Mercantile Corporation, which was headed by Norman B. Comfort. Mr. Comfort decided to call this new subdivision "Picardy", named after the beautiful area in northern France where he had been stationed during World War I.

Picardy Lane was laid out in three sections corresponding to divisions of the old Luedloff property; thus the E-shaped street plan. The first section, on the north end, was platted and recorded on March 22, 1924 and covers lots 1 – 11. The second section, in the middle area, was platted and recorded on October 25, 1925 and covers lots 14 – 33. The third section, on the south end, was platted and recorded on June 3, 1929. Each lot is 30,000 sq. ft. minimum lot size with minimum 75 ft. setbacks from the edge of the street pavement. In contrast to most of the other subdivisions in the Village of Ladue, that sold only land, the developer of Picardy Lane also built several of the houses to be sold along with the land, most of them designed by renowned architect Daniel H. Mullen. Because the Depression occurred soon after the last platting of Picardy Lane, many of the houses were not built until the late 1930's and 1940's. Today Picardy Lane is comprised of 48 homes.

If you, or someone you know, has an interest in donating old Ladue subdivision/neighborhood photos, articles, plat cards, documents or memorabilia please contact Ladue

*Archives Committee Chairman
Charlie Hiemenz at 991-9176 or
achiemenz@aol.com.*



Attention Trustees

Are you a Trustee for your neighborhood association? Does the City have your current contact information?

Please contact Shelly Benson at City Hall with updated information at 314-993-3439 or sbenson@cityofladue-mo.gov.

We encourage you to visit the City's website at www.cityofladue-mo.gov to sign up for "Email Notification" service. This service allows you to receive an email for the following categories:

1. City Council and Committee/Commission Meeting Agendas
2. Crime Alerts
3. Ladue Current Events
4. Trustee Group Notifications

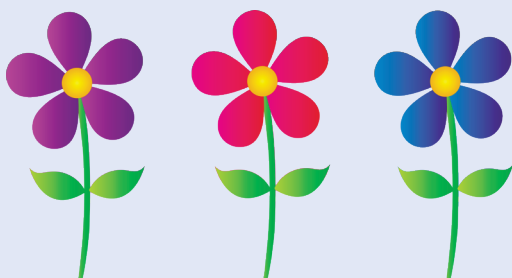
The sign up bar is located on the home page in the lower left menu and at the bottom right side at www.cityofladue-mo.gov.

A new "Trustee" page has been added to the City's website on the home page under "Residents". Helpful information has been consolidated here for convenience. New information will be added and updated periodically.

Ladue Garden Club

We invite you to visit the city's website at <http://www.cityofladue-mo.gov/residents/garden-club-314>

for conservation news and tips provided by the Ladue Garden Club.



Thank You from the Fire Department

It is finally complete, both outdated fire houses have been successfully rebuilt and are fully occupied. As I see it, this would be the appropriate time to thank the community for supporting the reconstruction of the fire houses. However, before I get to the "thank you", I think it is important to understand what the fire houses mean to us, the firefighters.

The fire service is a unique industry as we do not fall into the "40 hour" work week model. It is customary for firefighters to work 24 or 48 hour shifts. In the City of Ladue, firefighters work 48 hours on and 96 hours off. Just to be clear, when I say they are on shift for 48 hours, they are living at the fire house for 48 hours. Over a thirty year career a firefighter will spend over nine years of his or her life at the fire house. Comparatively speaking, "40-hour" employees spend approximately seven years of their life at work. So, as you can see, fire fighters spend a significant amount of time at the fire house.

Since there is so much time spent at the fire house, personnel become very close and a family atmosphere develops. To many of us, the fire house is a safe place in which we can discuss personal or global issues, i.e., sit around the coffee table solving all the problems of the world and by doing this, lifelong friendships are developed.

On any given day firefighters see and handle horrific things that most individuals could not or would not want to see. These calls have lasting effects on firefighters. The fire house is a place in which we return to after the horrific call, the safe-haven, the place in which we can vent or discuss how the call went; could we have done better, did we have an impact on someone's life, or simply did nothing go right. We as firefighters rely on the safety and inclusiveness of the fire houses to verbalize what we have seen and how it was handled. It is also the place in which "the family" continues to check on the individual that is struggling with personal issues or dealing with a bad call. The fire house IS the place in which we take care of each other. However, it is also the place where harmless pranks are held, holidays are shared, birthdays are celebrated, and retirements are honored.

The fire house is our second home! This is difficult to explain to a five-year old who doesn't understand that dad or mom must leave on Christmas morning to report for duty or when he or she is receiving an award and dad or mom cannot attend because they are at the fire house. These are the times in which we lean on each other at the fire house as missing these moments with loved ones is difficult.

Through this short essay, I hope I have given you an idea of what the fire house means to us. If you understand what the fire house means to us, you will truly understand when we, all fire department personnel, say thank you, thank you, thank you. We have two beautiful homes to spend our firefighting careers in because the citizens of Ladue support and respect us. It is my pleasure to be the Fire Chief of this City and truly look forward to serving for many years to come.

Chief Steven Lynn



Fall 2017 Leaf Collection Schedule

Sections 1B, 4A, 2A

October 2 & October 30 & December 4

Sections 5B, 3C, 2B

October 9 & November 6 & December 11

Sections 5A, 3B, 5C

October 16 & November 13 & December 18

Sections 4B, 1A, 3A

October 23 & November 20 & December 26

Don't Forget...

- To guarantee pick-up, have leaves out no later than 7am on Monday of your scheduled week.
- No bagged leaves will be collected.
- No grass, hedge, lawn clippings or sweet gum balls will be collected.
- Leaves must be raked off the road and spread out so that the back edges are no further than 3 feet from the road.
- Leaves should be placed on your personal property and not on common ground areas.
- Leaves should not be placed out for collection more than 10 days in advance.



Christmas tree pick up starts January 15, 2018
Please have your tree out!



Police Department

On behalf of the men and women of the City of Ladue Police Department I would like to take some time over the next couple of newsletters to describe our organizational structure, as well as briefly outline a few of the roles and responsibilities each position is tasked with. Our Department is comprised of twenty-seven sworn officers, and six civilian employees, who are all committed to excellence and are dedicated to serving the residents of Ladue, as well as every person that works, attends school, or simply passes through our town.

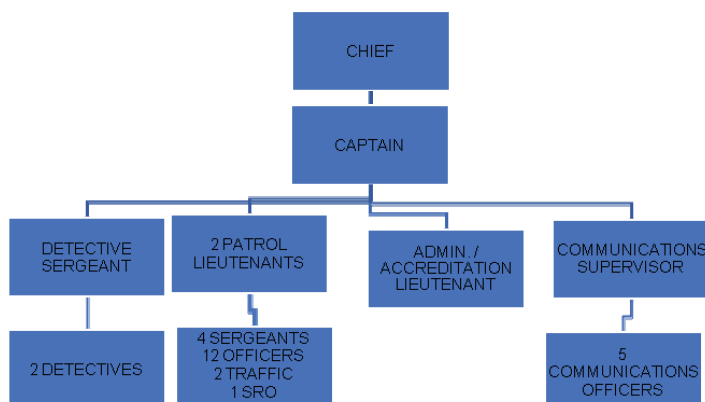
Let's begin with the largest group of officers and the group widely considered the backbone of the Department, our patrol division. The patrol division is commanded by two Lieutenants and incorporates the patrol and traffic units, as well as the school resource officer. There are four patrol teams comprised of a supervisor (Sergeant) and three police officers. We currently have two officers assigned to the traffic safety unit and one officer assigned to the Ladue School District as a school resource officer.

Some of the basic responsibilities of our patrol officers include the appropriate enforcement of laws and ordinances, preserving the public peace, investigating crimes, protecting lives, property and individual rights, providing general police services to the public where appropriate, prevention and detection of crime, and apprehension and prosecution of offenders. Officers assigned to the traffic safety unit are primarily responsible for the enforcement of all traffic laws and ordinances, the investigation of traffic crashes, directing

and controlling traffic, and identifying traffic-related needs of the unit and community. The primary responsibility of the school resource officer is to support and facilitate the educational process within the Ladue School District by providing a safe and secure environment through building and establishing meaningful relationships with students, parents, and staff.

Patrol officers are often the first responders and are the most visible officers to the public. As the face of the Department, we ask this group of officers to get in neighborhoods, schools, and businesses while maintaining a cordial and approachable demeanor. We are here for the public and please don't hesitate to stop an officer for a friendly discussion or to simply say hello.

Respectfully,
Ken Andreski, Jr.
Chief of Police



City of Ladue
9345 Clayton Road
St. Louis County, MO 63124

PRSRT STD
U.S. POSTAGE
PAID
ST. LOUIS, MO
PERMIT #2710

City Council Members

WARD 1 A. CHARLES HIEMENZ AND JOHN HOWELL

WARD 2 JOHN FOX AND PATRICK HENSLEY

WARD 3 HAL BURROUGHS AND BILL BRENNAN

(CONTACT INFORMATION IS AVAILABLE ON THE CITY
WEBSITE, www.cityofladue-mo.gov)



City Directory

MAYOR	314-993-3439 ext. 245
ADMINISTRATION	314-993-3439
BUILDING	314-997-6308
MUNICIPAL COURT	314-993-3919
PUBLIC WORKS	314-993-5665
PUBLIC WORKS – FAX	314-994-3195
POLICE (non-emergency)	314-993-1214
FIRE (non-emergency)	314-993-0181
FIRE – FAX	314-993-0412
FAX (all other departments)	314-993-5652
Website	www.cityofladue-mo.gov
E-MAIL	lrider@cityofladue-mo.gov nspewak@cityofladue-mo.gov