

NEWSLETTER

F A L L 2 0 1 6

There is always something going on in Ladue! This fall saw the groundbreaking for Firehouse #1. The basement walls have been poured and soon you will see our beautiful new building taking shape. The architectural style is similar to our recently built Firehouse #2. Not only are these buildings in keeping with the residential quality of Ladue, they allow our Fire/EMS crews up to date equipment with which to provide superior services to our community. A special thanks goes to our Oversight Committee Chairs Councilman John Fox and Fire and Police Commissioner Bill Francis. This project is on time and on budget.

If you are wondering where our fire truck and ambulance are during construction-take a drive through the City Hall campus and you will see the fire trailer nestled next to the Public Works building. Locating the Firehouse #1 crews there will allow response times to remain the same. Our ambulance is residing in the second bay of Firehouse #2. We appreciate that our personnel are willing to live in temporary quarters and that they do it with a smile.

The City's Storm Water Initiative continues to move forward in the second phase. Chaired ably, by Bob Watt, the advisory committee worked with HR Green, our storm water engineering consultants, to develop a matrix by which to prioritize storm water projects that were identified in the first phase of the project. The larger committee has completed their work. Many thanks to the members who have concluded their committee work: Jennifer Avery, Ann Carter and Ray Potter.

At the September Council Meeting, the Council approved my appointments to a core Storm Water Committee. This committee will again work with HR Green to use the matrix and begin to identify projects recommended for design. This committee is again chaired by Bob Watt and

the members are: Maryann Rober, Tom Bowers, Lloyd Palans and Trae Meyr with Anne Lamitola and myself serving as ex-officio members. We will now begin by exploring our options with regard to funding the prioritized projects. Most likely we will be working with MSD and with private entities to optimize funding. Additionally, homeowners can now apply for matching grants to help with smaller storm water issues.

Stop by the Public Works Building, located just north of City Hall, this fall to see the Ladue Garden Club's Conservation garden. This garden was originally donated to the City by Ladue residents Dennis and Kathy Woldum in conjunction with the organization, Bring Conservation Home. The Garden Club is improving on a lovely garden by adding some landscape architecture and increasing the number of native plants. Look for other partnerships between the City and the Ladue Garden Club in the near future.

Beautify Ladue is responsible for some lovely improvements in our town. They recently completed the landscape at the entrance to Tanglewood subdivision and have planted trees and flowers all around town. Watch for their mailer and your opportunity to contribute to their cause.

As always, our volunteer committees continue to contribute time and expertise and I wish to give them well deserved credit for contributing to our well run City. Please refer to the City website to see a list of our committees and our volunteers.

Our Building Department is a bustling department and we have many new faces-some completely new to the City and some who have joined us from other

departments. Stephanie Davenport who was our Court Clerk for many years is now the Building Department Coordinator. Keith Terry, one of our retired Fire Captains, is our new Property Maintenance Inspector. Mark Weber joins us as Building Inspector upon Dan Meehan's retirement. We wish Dan the best in his retirement. And, Nancy Dunaway, is our new part time administrative assistant.

The City Council approved my appointments to the Architectural Review Board. Kathy Williams and Diane Lochner join Matt Wolfe and Gene Mackey on the Board. We are seeing a great increase in building projects and I thank each one of our building department personnel and our volunteers for the time spent to ensure that we maintain the highest of standards.

Remember to shop Ladue first. Our merchants are your friends and neighbors and they offer unique and fun experiences in all of our shops and restaurants. Truffles just opened a lovely outdoor patio and I hope you take advantage of the beautiful fall weather to try it out along with our other outdoor dining spots in town.

I wish you and yours the loveliest of holiday seasons as we look forward to Thanksgiving and the December holidays. Please call or email me with any questions, suggestions or your thoughts. I love to hear it all! Even complaints often lead to a "tweaking" of our services as we constantly strive to improve ourselves. I hope you agree with me that our City personnel continue to provide you with the highest quality services. I don't know of another City that works as hard as we do to deliver. Best to you and yours.

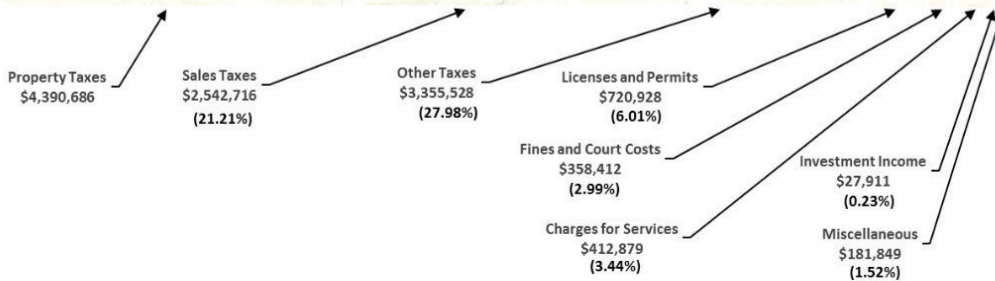
Mayor Nancy Spewak



City of Ladue, Missouri

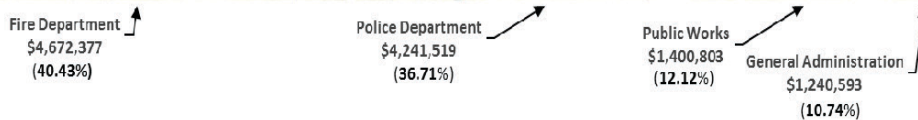
Fiscal Year 2015 Revenues

Total Revenue: \$11,990,909



Fiscal Year 2015 Expenditures

Total Expenditures: \$11,555,292



Business Profile

Located in the heart of Ladue on Clayton Road, Ladue Pharmacy has been your community pharmacy for generations. Complete with a soda fountain and bicycle delivery, the Williams' "community" pharmacy began when registered pharmacist Maurice Williams founded the pharmacy at the historic streetcar stop near the U. City Loop. Ladue Pharmacy is now proudly owned by Maurice's sons, Rick and Brett Williams. Our mission has always remained constant – to meet all of your healthcare needs and to provide outstanding personal service to each and every customer. We offer house charge accounts and delivery service to our valued customers. Additionally, in order to meet the growing needs of our customers, Ladue Pharmacy has now evolved into an expansive gift shop and cosmetics boutique. Visit our website www.laduepharmacy.com for more information and receive a valuable coupon when you sign up for our newsletter.

Attention Trustees

Are you a Trustee for your neighborhood association? Does the City have your current contact information? Please contact Shelly Benson at City Hall with updated information at 314-993-3439 or sbenson@cityofladue-mo.gov.

New! For Christmas Trees

The City picks up 800-900 Christmas trees annually and the tree crews will begin sweeping the City for trees on Monday morning January 9, 2017 weather permitting. There is no need to call the City to have your Christmas tree picked up this year as the crews will run the entire City. Please have them set out by the street no later than Monday morning January 9, 2017 for pick up.



Public Works Department

Roadway Projects

The Public Works Department is proud of the road work completed in 2016! The Price Road Improvement project, which included the replacement of an aging asphalt path with ADA compliant concrete sidewalks on the west side of Price from Clayton Road to Delmar, along with an asphalt overlay of the pavement, wrapped up in June. In September, the surface of Warson Road was sealed with a latex modified slurry seal which, along with ongoing maintenance treatments such as crack sealing, will prolong the life of the pavement. The City also continues to work on the design phase for Lay Road improvements, which will include the construction of a concrete sidewalk on the west side of the street, and overlaying the roadway with two inches of asphalt. The construction phase for the Lay Road project is scheduled for 2018.

Citywide Storm Water Program

In 2015, the City began a three-phased Citywide storm water program. The first phase of the program was the Citywide storm water needs assessment which was completed in November 2015 and involved:

- ☐ compiling all of the existing and new storm water complaint data from all available sources
- ☐ evaluation of creeks and streams for stream health and erosion
- ☐ creating a basic hydraulic model of the drainage system within Ladue
- ☐ mapping the findings which included 1000 problem points citywide

The executive summary of the needs assessment is available on the Public Works Departmental page on the City's website: <http://www.cityofladue-mo.gov/>

In early 2016, the Mayor appointed a Storm Water advisory committee who was tasked with defining the storm water control program for the City, how the City will evaluate and identify projects, and how the City will implement storm water projects. The Storm Water advisory committee met monthly and successfully developed the project evaluation system that is to be utilized for the Storm Water master planning phase. They also proposed a small project storm water grant program which will allow for homeowners to be reimbursed for 50% of their costs, up to \$25,000, for the design and construction of small scale City-approved storm water

2016 Fall Leaf Collection Dates

DECEMBER



05	Section	5B	3C	2B
12	Section	5A	3B	5C
19	Section	4B	1A	3A
26	Section	1B	4A	2A

projects. All of this information was compiled into a proposed storm water ordinance by the committee which was adopted by City Council on August 18, 2016.

At the September City Council meeting, City Council approved a contract amendment with the City's storm water consultant, HR Green, for the development of the Storm Water Master Plan. The Storm Water Master plan will involve the development of concept engineering solutions for the seventeen neighborhoods with the highest statistical need with regard to severity and concentration of storm water problems. The consultant will also take the basic hydraulic model that was created for the entire City during the Needs Assessment phase and update it with any new information this year, after completion of the needs assessment. The updated model will serve as a baseline that all proposed projects will be measured against to ensure that storm water solutions do not create a problem elsewhere in the conveyance system. The Master Plan will be presented to the Storm Water Committee in the Spring of 2017 and they will review the proposed projects, and seek public input. All affected property owners will be invited to the Committee meeting, and any member of the public will be welcome to attend to learn more about the plan. After Master Plan completion, the City will work with the consultant to create a five-year implementation plan, which will outline the specific projects that will be designed and constructed. The five-year implementation plan is projected to be complete by Summer 2017.

THE NEED FOR COMMUNITY RISK REDUCTION PROGRAMS

What is Community Risk Reduction (CRR) and Why is it Important? Community Risk Reduction (CRR) is the identification and prioritization of risks followed by the coordinated application of resources to minimize the probability or occurrence and/or the impact of unfortunate events. Within the fire service context, this means that fire departments exist not only to respond to emergencies after the fact, but to prevent or reduce the effects of their occurrence in the first place. It assumes that the fire service will act proactively as a risk reduction entity for their community. It also assumes they will partner with other community organizations as needed to accomplish their risk reduction objectives. By working proactively and with community partners, the Ladue Fire Department will be able to provide the highest level of protection. CRR is not a new concept for the fire service. For years' fire departments have been involved in some community risk reduction through building inspections and public education. But this concept needs to be applied in a focused manner, integrated into the mindset of staff and become the mission of the fire department and citizens.

The Ladue Fire department is committed to preventing emergencies as much as mitigating the emergencies. The first step is to identify the risk with the City of Ladue and apply a standard strategies and tactics approach to developing a reduction plan. Once the plan is developed and implemented, firm data must be collected to evaluate the effectiveness of the program.

The vision of the Ladue Fire Department is to preserve and promote the safest environment for the citizens of Ladue. To accomplish this, it is imperative that the fire department has a strong community risk reduction program. As we already have several of the pieces of the program, we will be looking to fill the gaps so that we may fulfill the vision by identifying and reducing risk within our community. By doing this we will accomplish our vision.

Fire Chief Steven Lynn



STORMWATER POLLUTION SOLUTIONS & YOU

You can help keep our waterways clean by following these tips on dealing with common around-the-house pollutants.

SEDIMENT

This is the most common pollutant. Many other pollutants often attach to, and are carried by, sediment particles. Excess sediment in the water can cause cloudiness which makes it difficult for aquatic plants to receive the sunlight. Sediment can also build up in waterways altering their natural course which could lead to increased flooding. Those waterways used for navigation may need to be dredged to restore them.

Solution: Sweep driveways instead of hosing them off. If you live near a stream, avoid mowing 10-15 feet from the bank. This will minimize erosion and help filter sediment. Vegetate bare spots in your yard.

NUTRIENTS

Phosphorus and nitrogen are nutrients often associated with stormwater runoff. Nutrients can come from landscaping (commercial and residential), leaks from sanitary sewers and septic systems and animal waste.

Solution: Pick up pet waste. Involve your homeowner's association. Report sanitary sewer issues.

ORGANIC MATTER

Sources of organic matter include leaves and grass clippings and pet waste.

Solution: Consider using a mulch mower and leave clippings and leaves on the yard. Consider composting. Never blow leaves or grass clippings into the street. Never put grass clippings into creeks. Pick up pet waste.

OIL & GREASE

Traffic and other activities on roadways produce oil, grease and lubricating agents that are easily transported by stormwater.

Solution: Fix vehicles that are leaking fluids. Properly dispose of used oil.

LAWN CHEMICALS

Pesticides and herbicides can get into, and be transported by, stormwater runoff.

Solution: Do not over fertilize. Do not apply fertilizers or pesticides before a heavy rain. Landscape with native plants. Use chemicals according to instructions. Conduct a soil test.

CAR WASH RESIDUE

Pollutants can include soap, detergents, salt, rust, motor oils and fluids. If you wash your car at home, polluted water can flow into storm drains.

Solution: Use a commercial car wash. If you wash at home, do so on an area that will absorb the water. Use biodegradable, phosphate-free, water-based cleaners. Empty wash buckets into sink or toilet.

LITTER & TRASH

Trash and litter is carried off to storm drains.

Solution: Organize or participate in neighborhood litter clean-up events. Pick up litter in your own yard and simply do not litter. Always put trash in its proper place.

Police Department

Over the past several months, the City of Ladue and other communities in West St. Louis County have experienced both thefts from inside unlocked vehicles, unlocked vehicles parked in open garages, and stolen vehicles which were unlocked with the keys inside.

This type of crime is not new to our community. We began to see this type of crime increase in early 2012. In all these incidents, no single individual or group is responsible for all of the crime. Most often they return and continue to commit their crimes until they are identified, caught, and prosecuted.

Regardless of how these individuals get to our city (bus, car, bike or walk) and then into your neighborhood we know they are looking for opportunity to commit their crimes.

In the first eight months of 2016 we had twelve (12) incidents of property stolen from unlocked vehicles and five vehicles stolen. Four of the five vehicles were recovered the next morning. The fifth was recovered a few days later. All four vehicles were recovered within several blocks of each other. No damage occurred to any of the vehicles and in most cases the keys were found inside when recovered. We believe the suspects simply stole the vehicles to “get back home”.

In early October, two individuals responsible for several of the thefts from vehicles were arrested and confessed to their involvement in these offenses. Another group comprised mostly of juveniles (under 17) are responsible for multiple thefts from vehicles and all of the stolen vehicles were also identified and several arrested. These crimes are all the same; however, the perpetrators did not know each other. The two individuals and the juvenile group members are all currently being sought by other west county police departments.

To illustrate this point, the following information comes from a recent arrest detailed in a September 26, 2016 KTVI Channel 2 report:

“Prosecutors said Spates confessed to stealing the car and said he took the Metro bus from East St. Louis to a Metro station at Ballas Road and Interstate 64. Spates said he walked around looking for an unlocked vehicle with the keys still inside”.

When investigators asked Spates why he went through the trouble of taking the bus all the that way....., he told them, “Everybody knows rich people in west county leave their cars unlocked with the keys in them.”

Given the above facts and the mentality of the

Email Notification Service

We are proud to announce that the City’s website now offers “Email Notification” service. This service allows you to receive an email for the following categories:

1. City Council and Committee/ Commission Meeting Agendas
2. Crime Alerts
3. Ladue Current Events

We encourage you to sign up for this service.

The email notification sign up bar is located on the bottom right side of the homepage at www.cityofladue-mo.gov.

individuals who commit this type of crime we (police and citizens) have to work together on prevention. In crime prevention, there are several universal truths:

1. We have no control over an individual’s motivation or “desire” to commit crime; 2. We have very little control over the means or “ability” of committing the crime; and 3. We have the most control over the OPPORTUNITY.

Therefore, there are steps you can take to reduce the chance of becoming a victim of this type of crime.

1. Remove all property from inside your vehicle day and night;
2. Lock your vehicle at all times when parked day or night;
3. Close and lock both your overhead garage and entry doors;
4. Lock your home’s entry doors (even when you are home);
5. Always use your home’s alarm system;
6. Leave exterior lighting on around your home;
7. Don’t leave valuable property on countertops, desks, etc.. visible from rear entry doors; and
8. If you see or hear any suspicious activity, please notify us immediately.

Chief Rich Wooten

City of Ladue Archives

Charlie Hiemenz - Archives Committee Chairman

The present 8.4 square miles that comprise the City of Ladue came together as a result of the consolidation of four villages:

The Village of Ladue (population 780), named for Peter Albert LaDue, was originally incorporated on 3/29/1928.

McKnight Village (population 441), named for John K. McKnight, was originally incorporated on 1/9/1929.

Deer Creek Village (population 492) was originally incorporated in 4/1929.

Dwyer Village "Dwyerville", named for Timothy T. Dwyer, was formed in 1869.

The villages of Ladue, McKnight and Deer Creek voted on 10/27/1936 to join together as a 4th class city and then their residents voted on 11/17/1936 to consolidate as the new *City of Ladue* that we know today. Dwyer Village became a part of this new city several years later. Below are the approximate village boundaries as they were laid out prior to consolidation:

McKnight Village

Gay Avenue to the east
Price Road to the west
Delmar Blvd. to the north
Clayton Road to the south

Village of Deer Creek

Lay Road to the east
Lindbergh Blvd. to the west
Clayton Road to the north
Old Warson Road to the south (to Des Peres Road, then the west side of Des Peres from Old Warson Road to the City limits of Warson Woods)

Village of Ladue

Price Road to the east
Warson Road to the west (plus Clermont Lane)
Rear of Ames Place Drive to the rear of Watch Hill Road to the north
Clayton Road to the south

Dwyer Village

Intersection of Clayton & Conway Roads to the east
Lindbergh Blvd. to the west
Conway Road to the north
Clayton Road to the south

If you, or any family member, have Ladue items of historical interest that you would like to donate to the City of Ladue archives collection, please contact Charlie Hiemenz either at 314-991-9176 or via Email at achiemenz@aol.com



TRY LADUE.....

.....BUY LADUE !

Did you know that each time you make a purchase in Ladue, you are making a direct investment in the Ladue Community? You double your purchasing power each time you make a purchase in Ladue by:

- Getting what your family wants and needs
- Helping secure the revenue base for your City

Currently, sales tax receipts in Ladue fund 20% of the City operating budget as well as our City capital projects.

The City of Ladue directly receives a portion of a 2 ¼% tax on every taxable purchase dollar spent in Ladue. These sales tax dollars are allocated into 3 different areas to fund the following:

- 1 ¼% is allocated to the City operational budget to help fund all City employee salaries, benefits, and training; as well as the other (non-payroll) City operating expenses.
- ½% is allocated to the City storm water budget to fund upgrades or replacements of the City owned bridges and culverts.
- ½% is allocated to the City capital improvements budget to fund all City owned equipment including 2 fire trucks and related equipment, our ambulance and related medical supplies, our police vehicles and equipment, and the vehicles and equipment used for such purposes as snow removal, leaf and brush pick up, and city owned right-of-way maintenance.

It is important to our community to lend your financial support to the Ladue merchants and businesses. By supporting these local businesses, many of which are family owned, Ladue residents can enjoy a wide variety of traditional and upscale offerings while at the same time helping support the revenue base for your City. Every time you TRY LADUE.....BUY LADUE ! You truly make a lasting and positive financial investment in your community.

City of Ladue
9345 Clayton Road
St. Louis County, MO 63124

PRSRT STD
U.S. POSTAGE
PAID
ST. LOUIS, MO
PERMIT #2710

City Council Members

WARD 1 A. CHARLES HIEMENZ AND JOHN HOWELL

WARD 2 JOHN FOX AND PATRICK HENSLEY

WARD 3 HAL BURROUGHS AND BILL BRENNAN

(CONTACT INFORMATION IS AVAILABLE ON THE CITY
WEBSITE, www.cityofladue-mo.gov)



City Directory

MAYOR	314-993-3439 ext. 245
ADMINISTRATION	314-993-3439
BUILDING	314-997-6308
MUNICIPAL COURT	314-993-3919
PUBLIC WORKS	314-993-5665
PUBLIC WORKS – FAX	314-994-3195
POLICE (non-emergency)	314-993-1214
FIRE (non-emergency)	314-993-0181
FIRE – FAX	314-993-0412
FAX (all other departments)	314-993-5652
Website	www.cityofladue-mo.gov
E-MAIL	lrider@cityofladue-mo.gov nspewak@cityofladue-mo.gov