

LADUE HISTORICAL ARCHIVES COMMITTEE FORMED

Mayor Irene Holmes has established the Ladue Archives Committee to gather and make available for display a wide range of Ladue historical memorabilia. "We know there are longtime residents who have wonderful items to share" Mayor Holmes said. The committee will be chaired by Ladue resident and City Council Member Charles Hiemenz.

The newly formed committee will engage in a number of tasks and functions including:

- Identifying, recording, cataloging and preserving historical items currently housed at Ladue City Hall.
- Accepting, recording, cataloging and preserving donated historical memorabilia relating to the City of Ladue.
- Scanning and digitizing items acquired to make them available to current and future Ladue residents.
- Coordinating with other local archivists to share information on historical pieces located in the archives of such other Ladue organization as schools, churches, businesses and clubs.

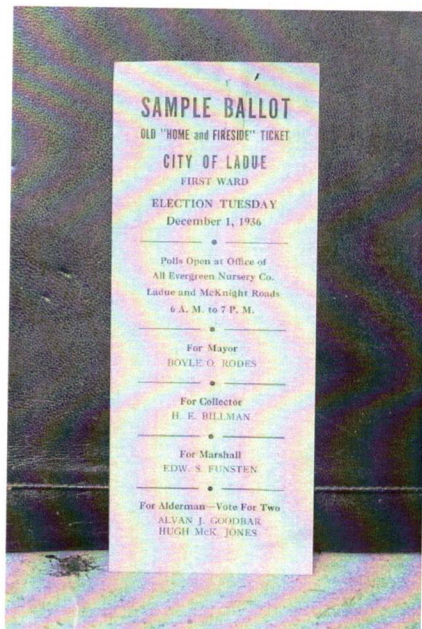
The Archives Committee is actively seeking items related to Ladue's history, including:

- Papers of former Ladue public officials and private citizens
- Subdivision documents and records
- Building plans
- Old letters
- Newspaper articles/periodicals
- Maps
- Works of art
- Plat cards
- Photographs



As the City of Ladue approaches its 75th anniversary in 2011, please give thoughtful consideration to donating items in the attic or closet that will help to tell a part of the story of the rich history of Ladue. All donations will be acknowledged with a letter of appreciation from the Mayor and with a permanent listing in the City of Ladue Historical Archives Book to be located at City Hall.

If you, or someone you know, is interested in helping preserve the rich history of Ladue by donating an item to the City of Ladue please contact Charles Hiemenz at 991-9176.



1947 PLYMOUTH PATROL CAR BEING GASSED UP AT 9159 CLAYTON ROAD.
DRIVER INSPECTOR H. E. WEILAND, PASSENGER PATROLMAN WALTER HALLER.

LADUE HISTORICAL ARCHIVES

SHARE YOUR LADUE MEMENTOS WITH THE ARCHIVES!

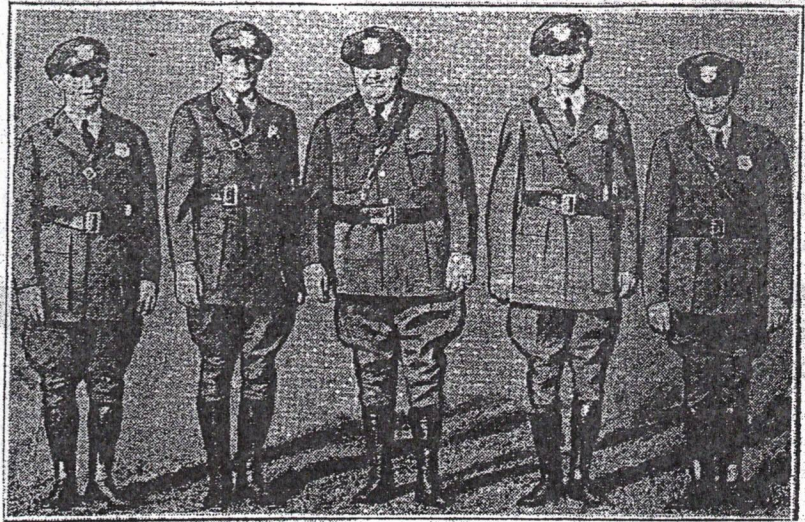
As the City approaches its 75th anniversary in 2011, The Ladue Historical Archives Committee is seeking items related to Ladue history, such as:

- Papers of former Ladue public officials
- Subdivision documents
- Building plans
- Newspaper articles
- Maps
- Photographs

If you or anyone you know has any historical photographs, documents or memorabilia related to The City of Ladue that you or they would be interested in sharing please contact Ladue resident and City Council member Charlie Hiemenz at 991-9176. These historical items will be properly preserved and displayed at City Hall for current and future generations of Ladue residents to enjoy. All donations will be acknowledged with a letter of appreciation and with a permanent listing in the City of Ladue Historical Archives Book to be located at City Hall.

LADUE TRIVIA: Ladue Road (named for Peter Albert LaDue) was laid out in 1860 and remained a mostly mud, sometimes gravel road until the Village of Ladue trustees voted on 7/2/1929 to pave the road with concrete. The Village of Ladue had been incorporated on 3/29/1928 with a population of 780.

New Ladue Village Police Force



By a Staff Photographer.
These men make up the newly-appointed constabulary for the exclusive St. Louis County section incorporated as Ladue Village. From left to right they are: Mills McGinnis, Harry E. Weiland, Ralph E. Strain (chief), Harry Gross and John H. Dintlemann.

MONDAY, FINANCIAL PAGE

\$40,000.00. VILLAGE OF LADUE, ST. LOUIS COUNTY, MISSOURI. FIRE STATION BONDS.

Sealed proposals will be received by the Treasurer of the Village of Ladue, St. Louis County, Missouri, at the office of the Board of Trustees, namely, at the shop of Nick Bender, on the south side of Clayton road near Price road, until 12 o'clock noon, on May 21, 1931, for the purchase of Forty Thousand Dollars (\$40,000.00) of the Village of Ladue Fire Station Bonds, to be dated May 1, 1931, of the denomination of One Thousand Dollars (\$1,000.00) each, interest payable semi-annually on February 1st and August 1st in each year, maturing \$2,000.00 February 1st in each of the years 1932 to 1951, both inclusive; principal and interest payable at the Mississippi Valley Trust Company, in the City of St. Louis, Missouri.

The rate of interest on said bonds is still to be determined, and bids will be received on said bonds paying 4 per cent or 4 1/2 per cent per annum, or any other rate to yield par and accrued interest.

The full faith and credit of the Village are pledged to the punctual payment of principal and interest of these bonds, which are payable by an unlimited ad valorem tax to be levied upon all the taxable property in the Village.

Each bid must be accompanied by a certified check on some solvent bank or trust company for One Thousand Dollars (\$1,000.00), payable to the Treasurer of the Village. All checks except those of the successful bidder or bidders will be returned. The check or checks of the successful bidder or bidders will be held by the Village Treasurer to be applied by him as part payment of the bonds awarded or applied as and for liquidated damages in case the bonds awarded are not taken up and paid for. And, such check or checks will be returned to the successful bidder or bidders in the event the Village does not deliver the bonds awarded to him or them on or before the first day of June, 1931.

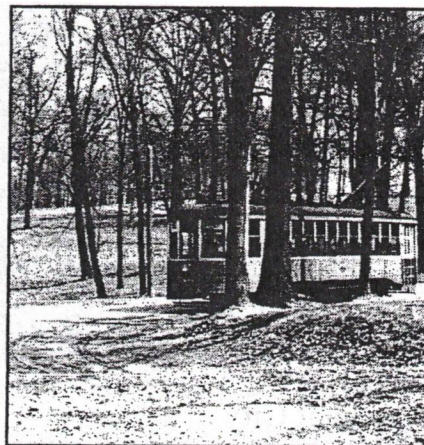
Proposals should be addressed to A. Wessel Shapleigh, Village Treasurer, Village of Ladue, St. Louis County, Missouri, and should be marked "Proposal for Village of Ladue Fire Station Bonds."

Purchasers will be furnished the legal opinion of Benjamin H. Charles, Esq., of St. Louis, approving these bonds as valid and binding obligations of the Village. Bonds will be printed and registered by the State Auditor at the expense of the Village. Delivery of said bonds will be made in accordance with the award on or before the first day of June, 1931, at the office of the Mississippi Valley Trust Company, St. Louis, Missouri.

A complete transcript of all proceedings preliminary to the issuance of these bonds will be furnished the purchaser. The right is reserved to reject any and all bids for said bonds which may be made.

The Village Treasurer shall require that each bidder shall file and deposit with him a certified check in the sum of One Thousand Dollars (\$1,000.00), payable to him as Village Treasurer, as provided in the form of advertisement hereinabove set out.

VILLAGE OF LADUE,
A. WESSEL SHAPLEIGH, Clerk.



OFFICIAL BALLOT

Special Bond Election

VILLAGE OF LADUE,
ST. LOUIS COUNTY, MISSOURI

Tuesday, the 7th Day of April, 1931

PROPOSITION

To increase the indebtedness of the Village of Ladue, St. Louis County, Mo., in the amount of Forty Thousand Dollars (\$40,000) for the purpose of constructing a building in which to maintain a Fire Company and to house apparatus and equipment for preventing and extinguishing fires, to authorize the Board of Trustees of said Village to borrow said sum for said purpose and to issue bonds of the Village therefor.

FOR INCREASE OF DEBT - YES

FOR INCREASE OF DEBT - ~~NO~~

(Strike out the clause you do not favor)

CITY OF LADUE HISTORICAL ARCHIVES

The City of Ladue Archives Committee is actively engaged in the process of acquiring memorabilia related to the history of the City. Items donated to the City Archives Committee greatly enhance the City archives collection and also help preserve the rich history of the City since its incorporation in 1936.

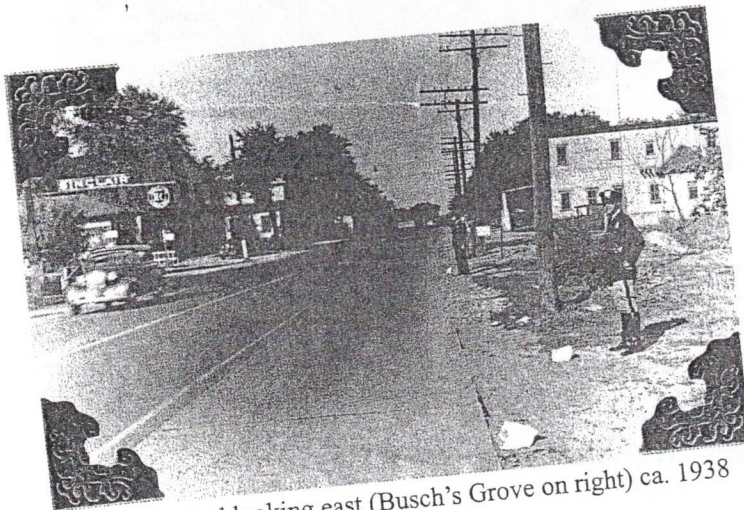
The committee is hoping to add to the City archives collection with items such as:

- Old City Artifacts
- Old Photographs
- Old Newspaper Articles
- Old Letters
- Old City Maps
- Historical Subdivision Files, Plans, Documents and Records

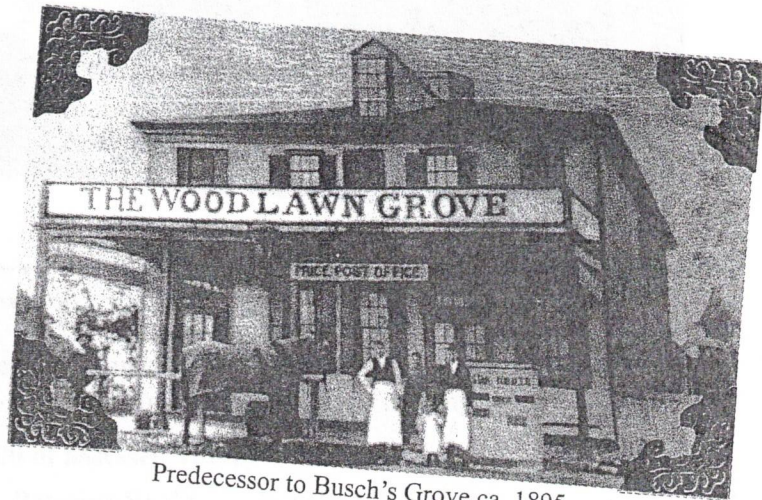
If you or someone you know has City of Ladue related memorabilia and are interested in donating it to the City archives collection, please contact:

Charlie Hiemenz – Chairman, Ladue Archives Committee
991-9176 or achiemenz@aol.com

LADUE TRIVIA: The City of Ladue was incorporated in 1936 as a result of the consolidation of three villages: McKnight Village, Deer Creek Village and the Village of Ladue. On December 1, 1936 Boyle O. Rodes, a partner in W.H. Markahm & Co. Insurance Company who lived on Upper Ladue Road, was elected the first mayor of The City of Ladue.



Clayton Road looking east (Busch's Grove on right) ca. 1938



Predecessor to Busch's Grove ca. 1895

The City of Ladue formed the Ladue Archives Committee in early 2011 as the City approached the 75th anniversary of being incorporated in 1936. Since being formed, the City has received numerous gifts and donations from Ladue businesses, current Ladue residents, and families of former Ladue residents. These "treasures" help the City preserve the rich history of Ladue.

The Ladue Archives Committee is actively seeking items related to Ladue's history, including:

- Papers of former Ladue public officials and private citizens
- Subdivision records and documents
- Building plans
- Old letters
- Newspaper articles and/or periodicals
- Maps
- Works of art related to Ladue
- Plat cards
- Photographs

If you, or someone you know, has an item that they would be willing to donate to the City of Ladue archives collection, please contact Ladue Councilman/City Archivist Charlie Hiemenz @ 991-9176 or achiemenz@aol.com

LADUE TRIVIA: The Ladue Police Department was organized on July 1, 1931. The officers provided their own uniforms and equipment and used their personal cars for patrol duty. Police headquarters was located at the St. Louis Country Club. Residents needing the police had to telephone the Country Club.

THE ST. LOUIS STAR SATURDAY EVENING, AUGUST 1, 1931.

New Ladue Village Police Force



These men make up the newly-appointed constabulary for the exclusive St. Louis County section incorporated as Ladue Village. From left to right they are: Mills McGinnis, Harry E. Weiland, Ralph E. Strain (chief), Harry Gross and John H. Dintlemann.

By a Staff Photographer.

#5

Spring 2014

The first Annual Ladue Dogwood Parade and Festival was held in 1993 under the leadership of Ladue residents and event co-chairs Joe White and Elliot Benoist. The parade and festival was underwritten with private donations obtained by Ladue's beloved mayor, Edie Spink, who had come up with the idea of a fun spring event to bring together Ladue residents, students from the Ladue public and private schools, and Ladue business merchants. The event was named "Dogwood" in recognition of the City of Ladue official flower; the beautiful dogwood flower that blooms on dogwood trees throughout Ladue each spring.

The Annual Dogwood Parade and Festival was held annually each year in May through 2007. The parade route ran from Horton Watkins High School, south on Warson Road, east on Clayton Road, ending at the Ladue Middle School parking lot facing Clayton Road at Conway Road. Clowns, candy, confections, and classic cars defined what quickly became a traditional Ladue event each spring. On the festival main stage there was an owner/dog look-a-like contest one year, there was a Battle of the Bands contest another year, and Elvis sang yet another year.

The event was discontinued after the 2007 event due to the I-64 shut down and construction project. The I-64 construction project added significant vehicular traffic onto adjacent roads, including Clayton Road, necessitating the City to keep Clayton Road open at all times. When Mayor Nancy Spewak was elected Mayor of the City of Ladue in April, 2013 she stated that one of her first priorities was to bring back the Annual Dogwood Parade and Festival. At the direction of Mayor Spewak, the Ladue Dogwood Parade and Festival is back. The 15th Annual Ladue Dogwood Parade and Festival will be held on **Saturday, May 10th**. The 2014 Honorary Grand Marshall will be Ladue resident and build-A-Bear founder, Maxine Clark. The 3 Pedros Group, sponsored by Truffles Restaurant, will be playing and singing on the main stage at the festival.

The City of Ladue archives collection includes many fun photos from prior year Dogwood Parades and Festivals. The City of Ladue Archives Committee is hoping to enhance the City collection of Dogwood event memorabilia and would appreciate donations of any items, photographs or documented recollections from previous Dogwood Parades and Festivals. In addition, the Archives Committee is actively collecting items, photographs and documented recollections related to the City of Ladue from years and generations long passed. If you, or someone you know, are interested in making a donation to the City of Ladue archives collection, please contact:

Charlie Hiemenz
991-9176
achiemenz@aol.com

#6

SPRING 2015

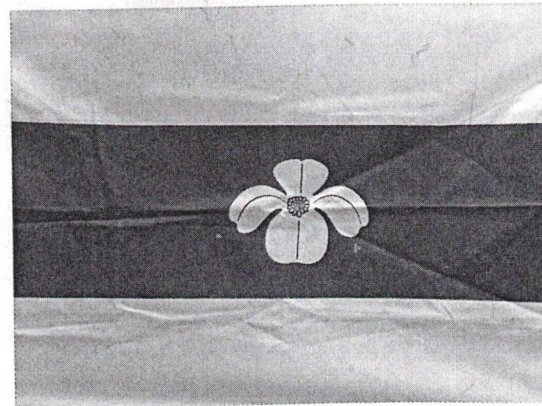
LADUE ARCHIVES COMMITTEE MORE ACTIVE THAN EVER!

The City of Ladue Archives is more busy and active than ever collecting vintage and historical Ladue memorabilia for current and future generations of Ladue residents to enjoy. Terrific items continue to be donated to the City by long time residents and their families. If you, or someone you know, is interested in donating an item to the City of Ladue, please contact Committee Chair Charlie Hiemenz at 991-9176 or achiemenz@aol.com.

The Archives Committee continues to seek historical Ladue items such as:

- Old letters
- Old maps of the area
- Vintage photographs
- Newspaper articles/periodicals
- Subdivision documents and records
- Artwork related to the Ladue area

LADUE TRIVIA: The dogwood flower was adopted as the official emblem for the City of Ladue by the Ladue City Council in 1951 and was displayed on all City issued automobile stickers. Today this official emblem appears on City vehicles, the City flag, City road entrance signs, signs identifying Ladue creeks, and in many other areas around and in the City of Ladue.



WINTER 2014

LADUE ARCHIVES COMMITTEE MORE ACTIVE THAN EVER!

The City of Ladue Archives is more busy and active than ever collecting vintage and historical Ladue memorabilia for current and future generations of Ladue residents to enjoy. Terrific items continue to be donated to the City by long time residents and their families. If you, or someone you know, is interested in donating an item to the City of Ladue, please contact Committee Chair Charlie Hiemenz at 991-9176 or achiemenz@aol.com.

The Archives Committee continues to seek historical Ladue items such as:

- Old letters
- Old maps of the area
- Vintage photographs
- Newspaper articles/periodicals
- Subdivision documents and records
- Artwork related to the Ladue area

LADUE TRIVIA: The dogwood flower was adopted as the official emblem for the City of Ladue by the Ladue City Council in 1951 and was displayed on all City issued automobile stickers. Today this official emblem appears on City vehicles, the City flag, City road entrance signs, signs identifying Ladue creeks, and in many other areas around and in the City of Ladue.

City Of Ladue Historical Archives

FALL 2015

#8

As *The City of Ladue* approaches its 80th anniversary in 2016, The *City of Ladue Historical Archives Committee* is actively seeking items related to Ladue's rich history, including:

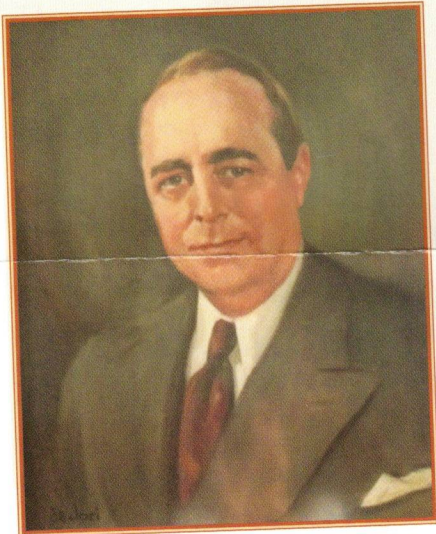
- Papers of former Ladue public officials
- Subdivision plans, files, documents, records, etc.
- Ladue building plans (residential, commercial, institutional)
- Old photographs of the Ladue area
- Old newspaper articles/periodicals pertaining to Ladue

If you or someone you know has City of Ladue related memorabilia that you or they would be interested in donating to *The City of Ladue*, please contact:

Charlie Hiemenz – Chairman, Ladue Archives Committee
Phone #: 314.991.9176
Email Address: achiemenz@aol.com

Ladue Trivia

Rodes Park sits at the intersection of Ladue and Warson Roads. This triangular shaped tract of land was purchased on July 20, 1944 from Minnie Rubinstein for the sum of ten dollars (\$10.00). The park was subsequently named after Boyle O. Rodes (1882 – 1945) who was appointed to the Board of Trustees of the Village of Ladue in 1936 and was elected the first mayor of *The City of Ladue* (1936 – 1945) when, on December 1, 1936, the Village of Ladue merged with McKnight Village and Deer Creek Village to create *The City of Ladue*.



Mayor Boyle O. Rodes
1936 - 1945



Archives Committee

Spring 2016
#9

THANK YOU! In 2015 the City of Ladue archives collection was significantly increased thanks to many donations from a wide range of current and former Ladue residents. These donations truly help preserve the rich history of the City of Ladue for current and future generations to enjoy.

If you, or someone you know, has City of Ladue related memorabilia that could be added to the City archives collection, please contact:

Charlie Hiemenz
991-9176
achiemenz@aol.com

LADUE TRIVIA: When the City of Ladue was formed on November 17, 1936 by the merger of three villages (the villages of Ladue, McKnight and Deer Creek) the first order of business of the new Ladue city government was to select an individual to develop a Master Comprehensive Plan for the new city. The Mayor and the City Council selected Harland Bartholomew, a City Planner who had introduced City Zoning as an element in City planning to protect property values, public safety and public health. Bartholomew, often referred to as The Father of American City Planning, developed a Master Comprehensive Plan for the new City of Ladue that was presented to the citizens of the City of Ladue in March, 1939. This plan is still followed by the City of Ladue today, some 77 years after it was first presented to the citizens of the City of Ladue!

Historical Archives

The City of Ladue formed the Ladue Archives Committee in early 2011 as the City approached the 75th anniversary of being incorporated in 1936. Since being formed, the City has received numerous gifts and donations from Ladue businesses, current Ladue residents, and families of former Ladue residents. These "treasures" help the City preserve the rich history of Ladue.

The Ladue Archives Committee is actively seeking items related to Ladue's history, including:

- Papers of former Ladue public officials and private citizens
- Subdivision records and documents
- Building plans
- Old letters
- Newspaper articles and/or periodicals
- Maps
- Works of art related to Ladue
- Plat cards
- Photographs

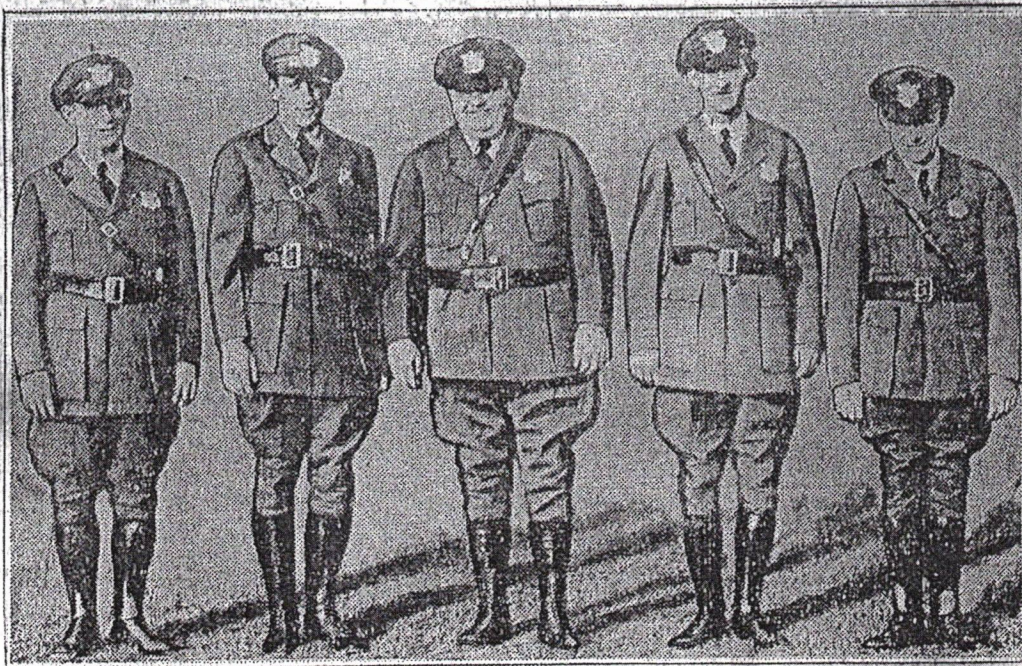
If you, or someone you know, has an item that they would be willing to donate to the City of Ladue archives collection, please contact Ladue Councilman/City Archivist Charlie Hiemenz @ 991-9176 or achiemenz@aol.com

LADUE TRIVIA: The Ladue Police Department was organized on July 1, 1931. The officers provided their own uniforms and equipment and used their personal cars for patrol duty. Police headquarters was located at the St. Louis Country Club. Residents needing the police had to telephone the Country Club.

THE ST. LOUIS STAR

SATURDAY EVENING, AUGUST 1, 1931.

New Ladue Village Police Force



By a Staff Photographer.

These men make up the newly-appointed constabulary for the exclusive St. Louis County section incorporated as Ladue Village. From left to right they are: Mills McGinnis, Harry E. Weiland, Ralph E. Strain (chief), Harry Gross and John H. Dintlemann.