

In the past year, have you...

- ⇒ Spent more time drinking or using than you meant to?
- ⇒ Neglected some of your usual responsibilities because of using alcohol or drugs?
- ⇒ Felt you needed to cut down on your drinking or drug use?
- ⇒ Did your family, a friend, or anyone else tell you they objected to your drinking or drug use?
- ⇒ Found yourself thinking a lot about drinking or using?
- ⇒ Used alcohol or drugs to relieve emotional discomfort, such as sadness, anger, or boredom?

If you answered 'yes' to at least two of the above questions, there is a good chance your use of alcohol or drugs has become out of control.

Let us help you sort it out with a free consultation.



Mission Statement

Providing quality services for individuals and families in a safe, supportive, respectful partnership by promoting health, well-being, and self-sufficiency.

Vision Statement

To promote safety, well-being, and self-sufficiency for the individuals of Juneau County. We strive to do so by remaining open-minded to the ideas and suggestions of others; provide person-centered services in the least intrusive and least restrictive way possible; collaborate with our departments and community partners; to function with integrity in all matters, manage public resources responsibly; and acknowledge the values and beliefs of others in a courteous and respectful manner.

**Juneau County
Department of Human Services**

200 Hickory Street
Mauston, WI 53948

Ph: 608-847-2400
Fax: 608-847-9421

Office Hours

Monday through Friday
8:00am - 4:30pm



**Juneau County
Department of
Human Services**

**- AODA -
Substance
Use
Treatment**

AODA—Substance Use Treatment

As a service to Juneau County residents, our Substance Abuse Counselors offer a variety of services to assist you in reaching your personal substance use goals. These services are available at a reasonable cost. If not covered by insurance or health plans, a sliding fee scale is used based on a person's ability to pay.

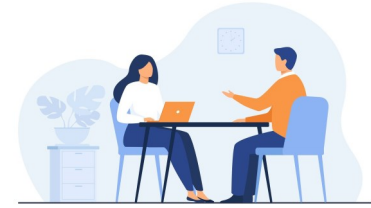


Addiction is the continued compulsive use of a substance or behavior in spite of adverse health or social consequences. It can happen to anyone. It is not a character flaw or a moral weakness. Addiction is a disease. It not only affects you but everyone close to you. Excessive alcohol and drug use acts as an effective solvent. It can dissolve families, marriages, friendships and careers.

It is not your fault.

Available Services

- Chemical Use and Court-ordered Assessments for adults and adolescents.
- Individual counseling for adults and adolescents.
- Assistance in locating residential treatment programs, traditional housing, and aftercare services.
- Community prevention and educational services.
- Assistance in finding local support groups such as Alcoholics Anonymous, Narcotics Anonymous, and Al Anon meetings.
- Referrals to county mental health services such as individual psychotherapy or psychiatry, if warranted.
- Education for family members and concerned others in order to better understand addiction and substance abuse.



IDP Assessments

Juneau County is responsible for completing Intoxicated Driver Program (IDP) Assessments for Juneau County residents charged for Operating While Intoxicated (OWI) or Driving Under the Influence (DUI).

Fee: \$275.00

To schedule an assessment, we require a \$50.00 deposit, balance due on or prior to date of assessment.

Payment can be made over the phone with a credit or debit card, or in person with cash, credit, or debit. There is a small processing fee to use a credit or debit card. No personal checks accepted.