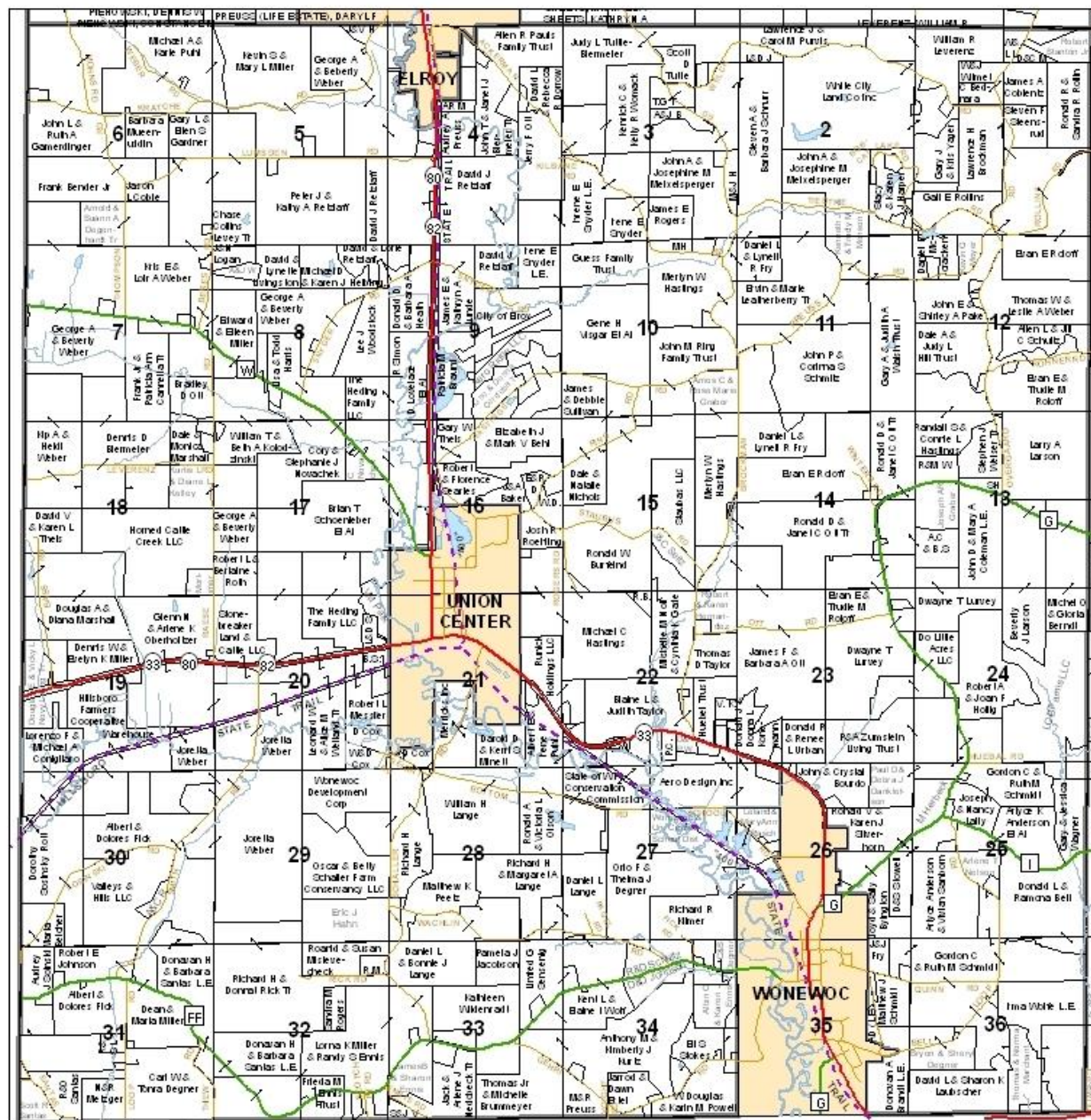


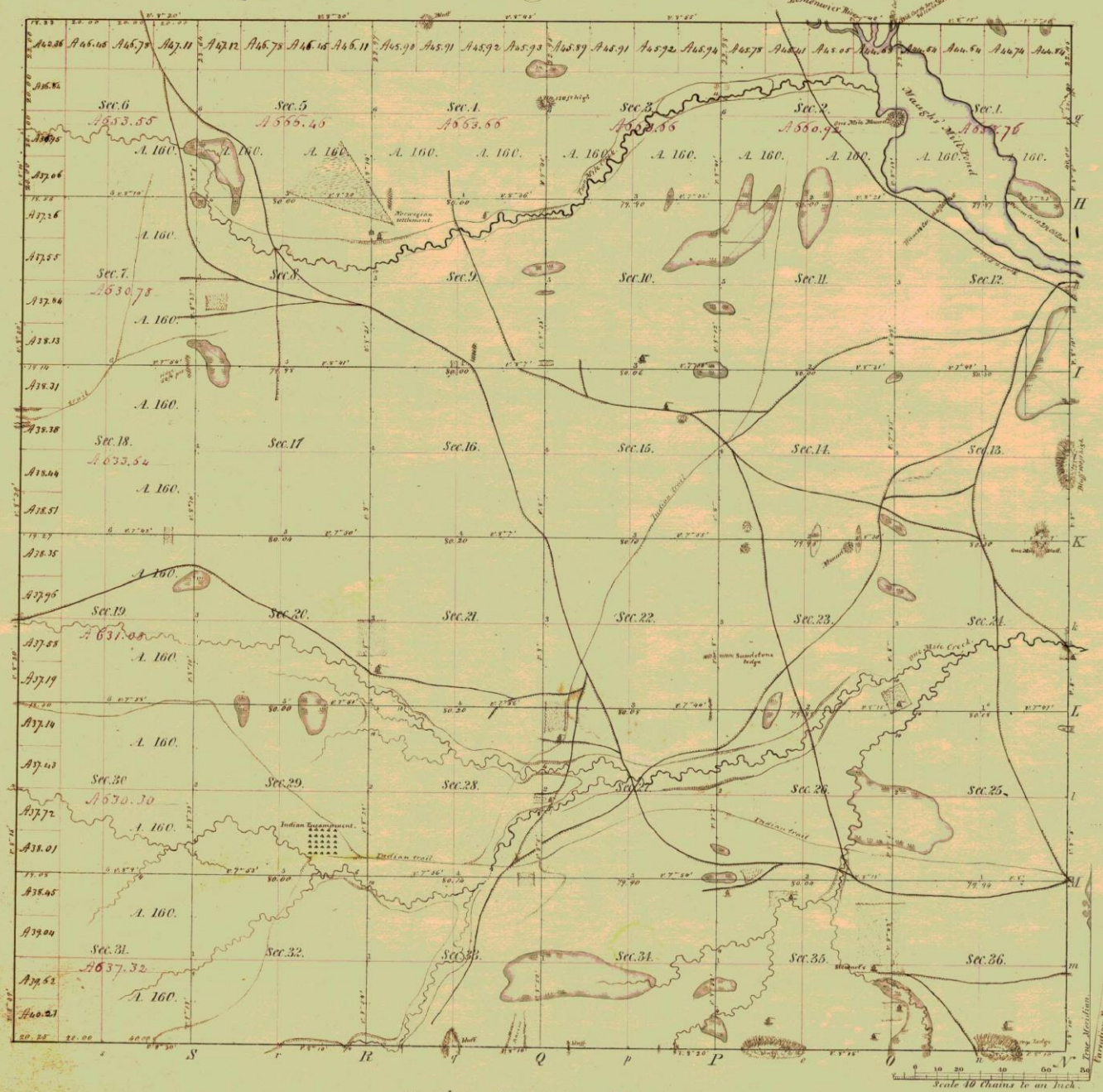
# Town of Wonewoc





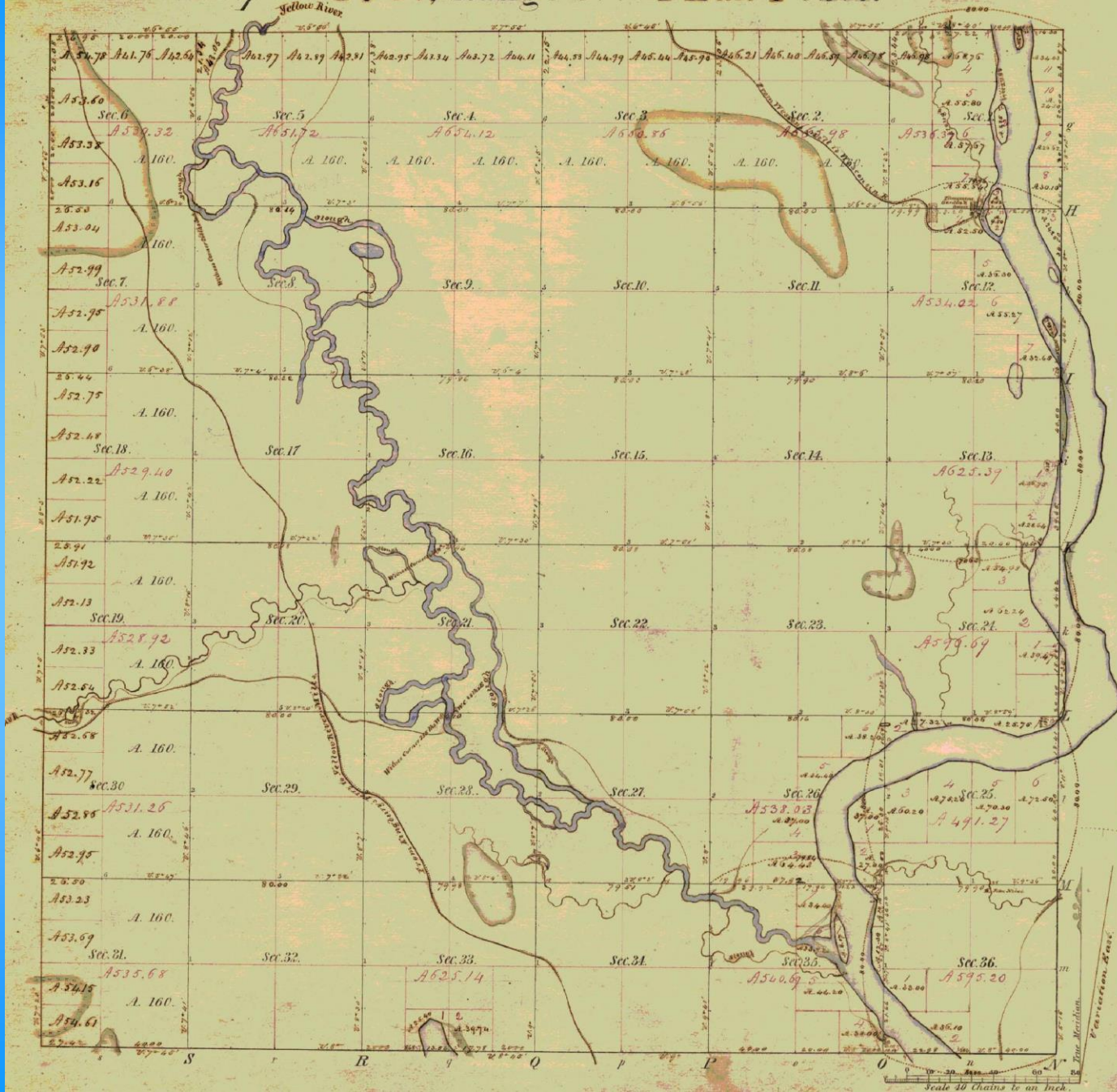
Township N<sup>o</sup> 15. N. Range N<sup>o</sup> 3 East of the 4<sup>th</sup> Mer.

15-3



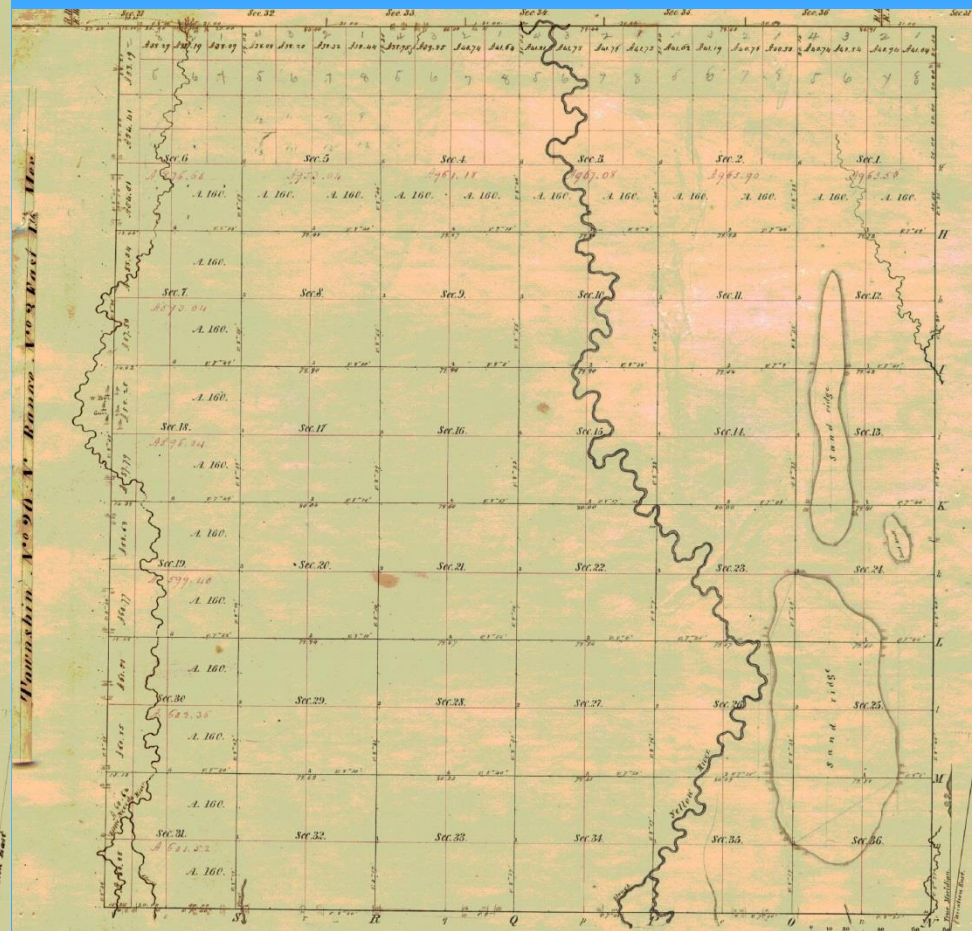
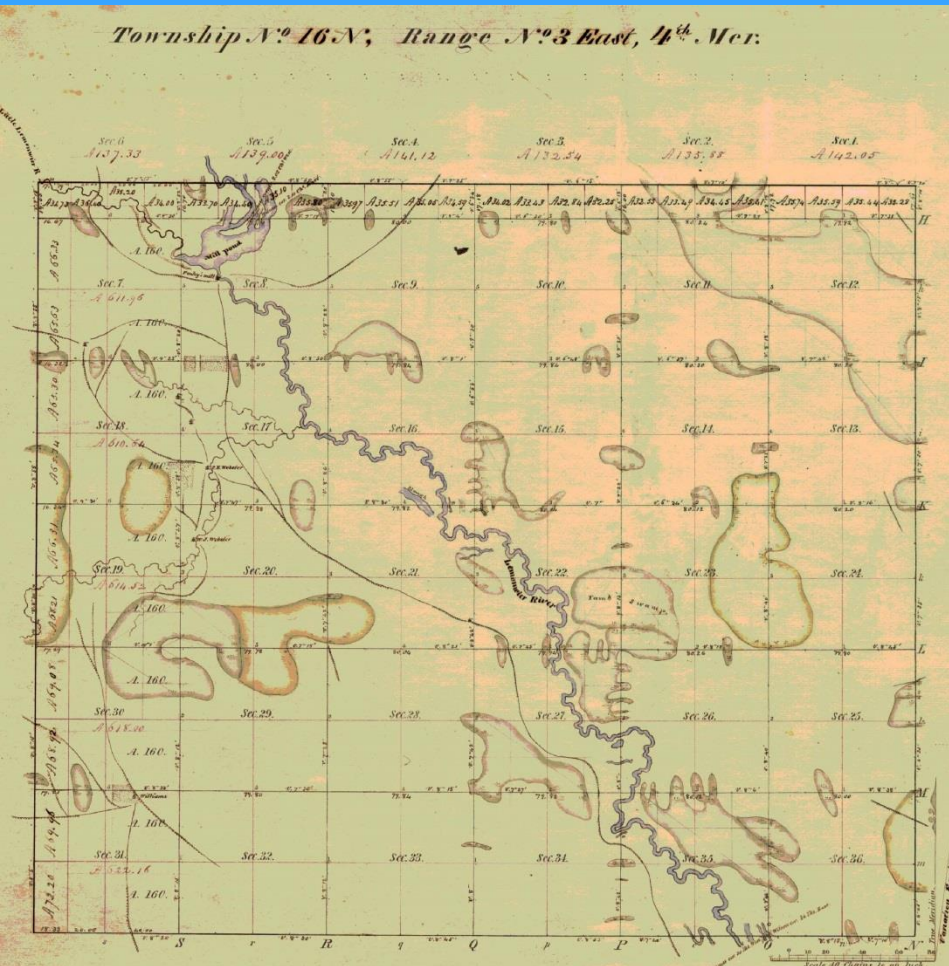


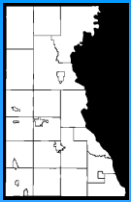
Township N<sup>o</sup> 17 N; Range N<sup>o</sup> 4 East 4<sup>th</sup> Mer.





# 16-3 & 20-3





## Juneau County Land Information

A short overview of

# Geographic Information Systems

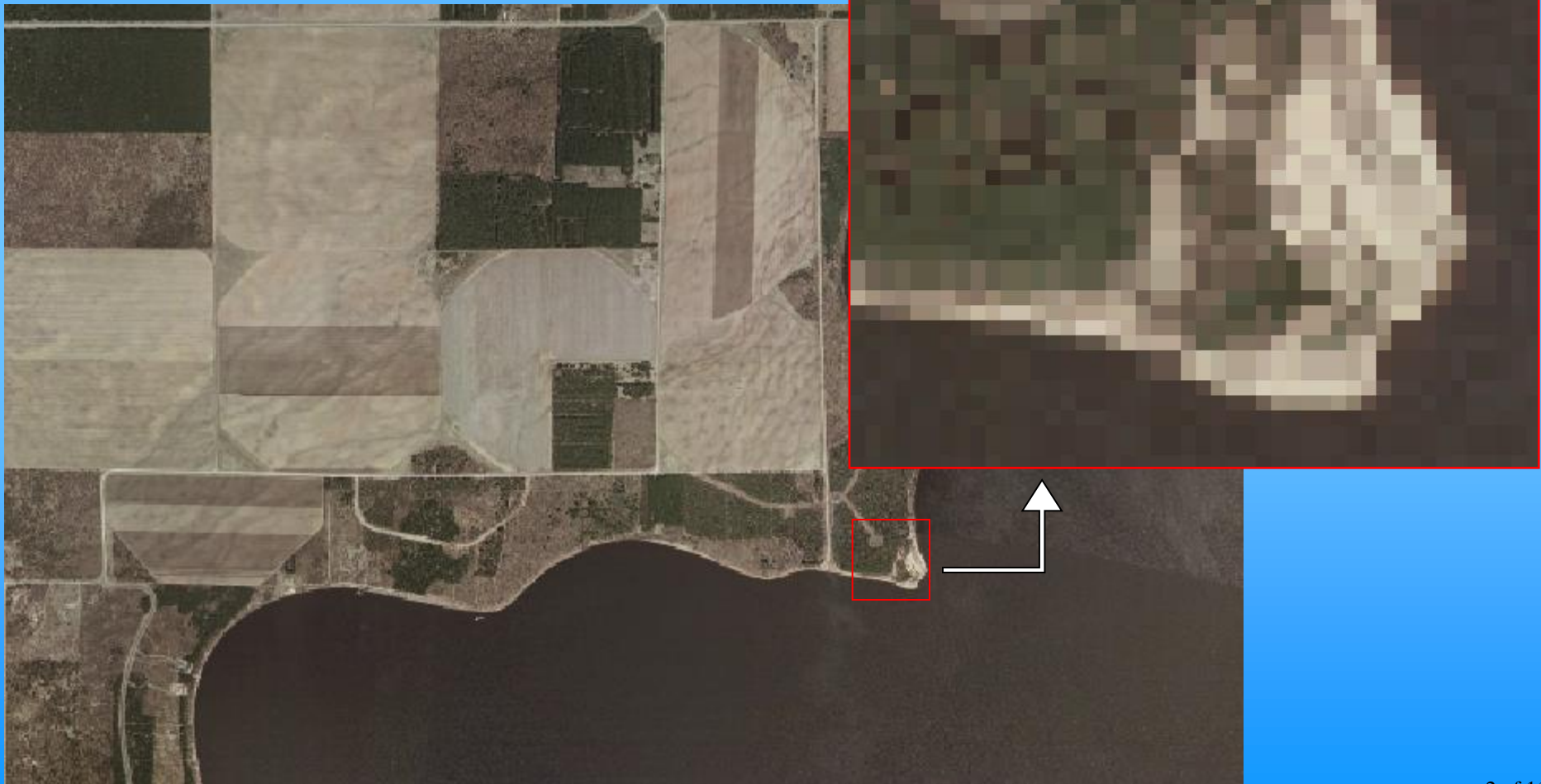
**Geographic Information Systems** is a system of computer software, hardware, data, and personnel to help manipulate analyze and present information that is tied to a spatial location.

(Source: [www.gis.com](http://www.gis.com), October 2003)

A simple way of thinking of it is a smart map which helps you to answer real world questions.

**Raster-** A raster layer is made up of many squares. Each of these squares represents the information contained within its boarder. In this case the information represented is color. As you see on the right when you look closely at a raster layers you can see the squares.

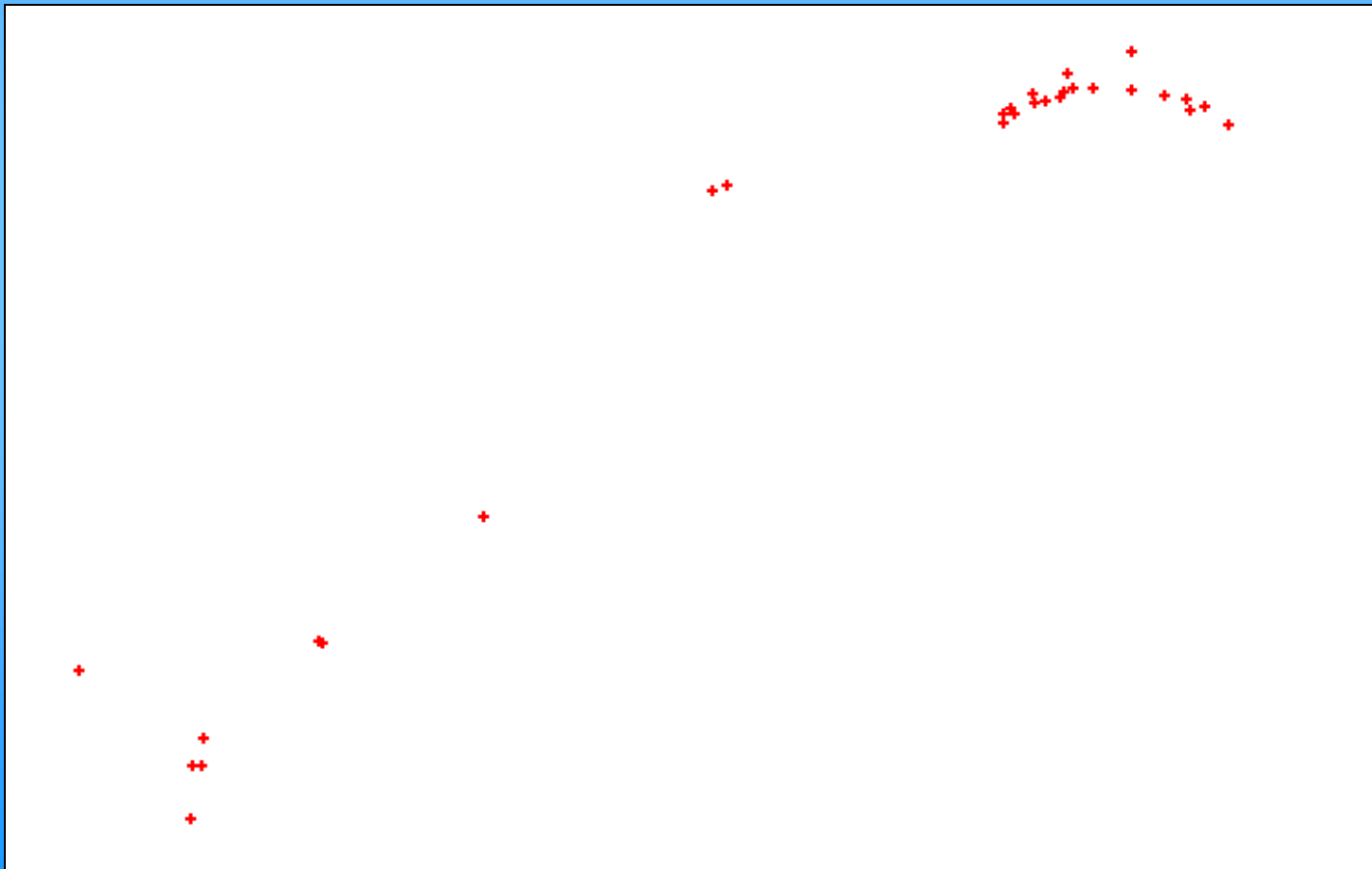
# Types of GIS Layers





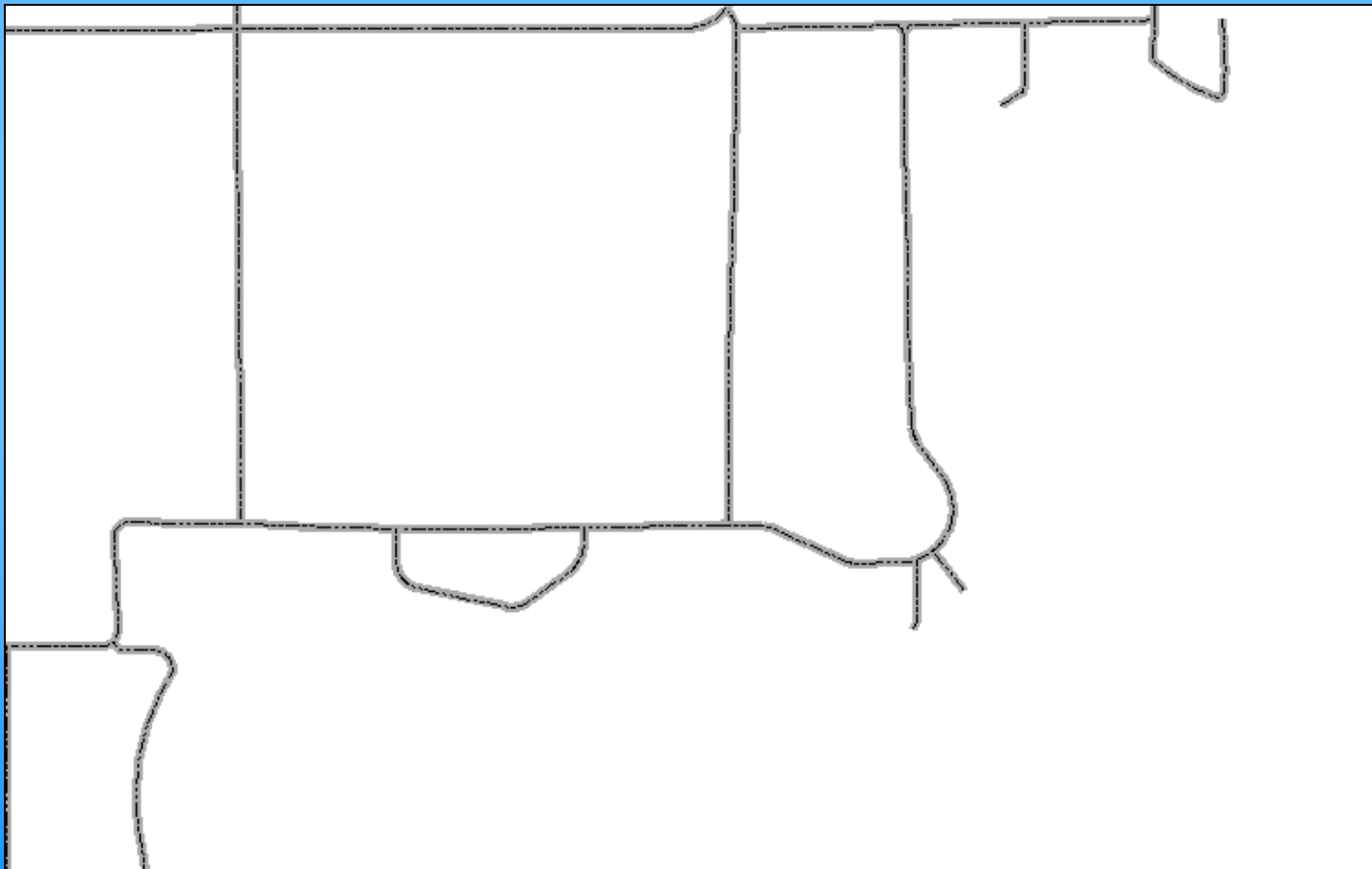
# Types of GIS Layers

**Point-** A point layer is made up of symbols which represents a specific geographic location. Point layers can represent many types of features. This point layer for example represents building locations. Other point layers might represent school, traffic light, store, city or town hall locations.



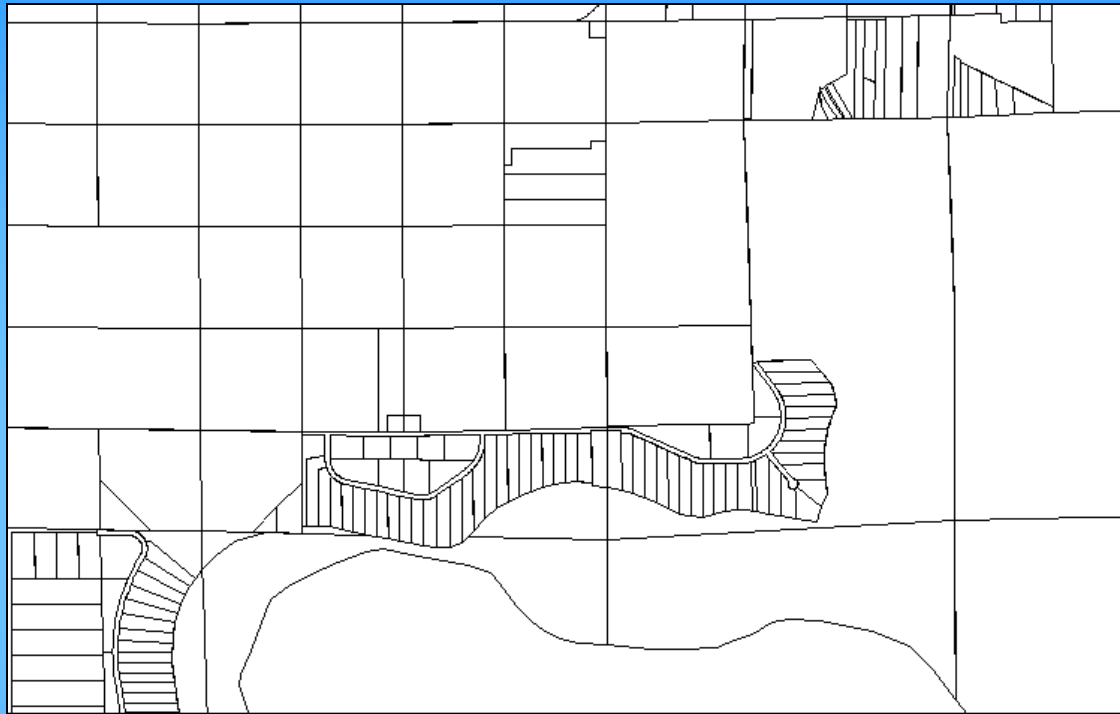
# Types of GIS Layers

**Line-** A line layer is made up of linear symbols which represents a geographic linear feature. This line layer for example represents road center lines. Other line layers might represent stream centerlines, flood plain boundaries, recreational trails, or electric lines.



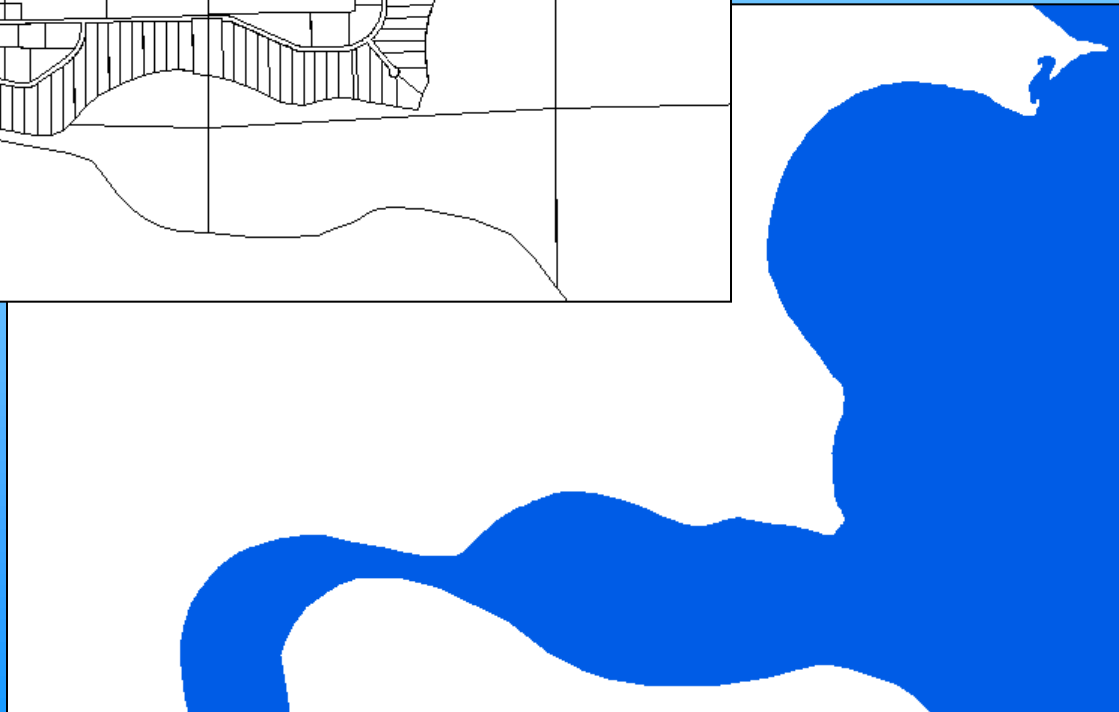


# Types of GIS Layers



**Polygon-** A polygon layer is made up of polygon which represent a geographic features which have area. The layer at the upper left represents land parcels and the layer at the bottom represents water. Other polygon layers might represent

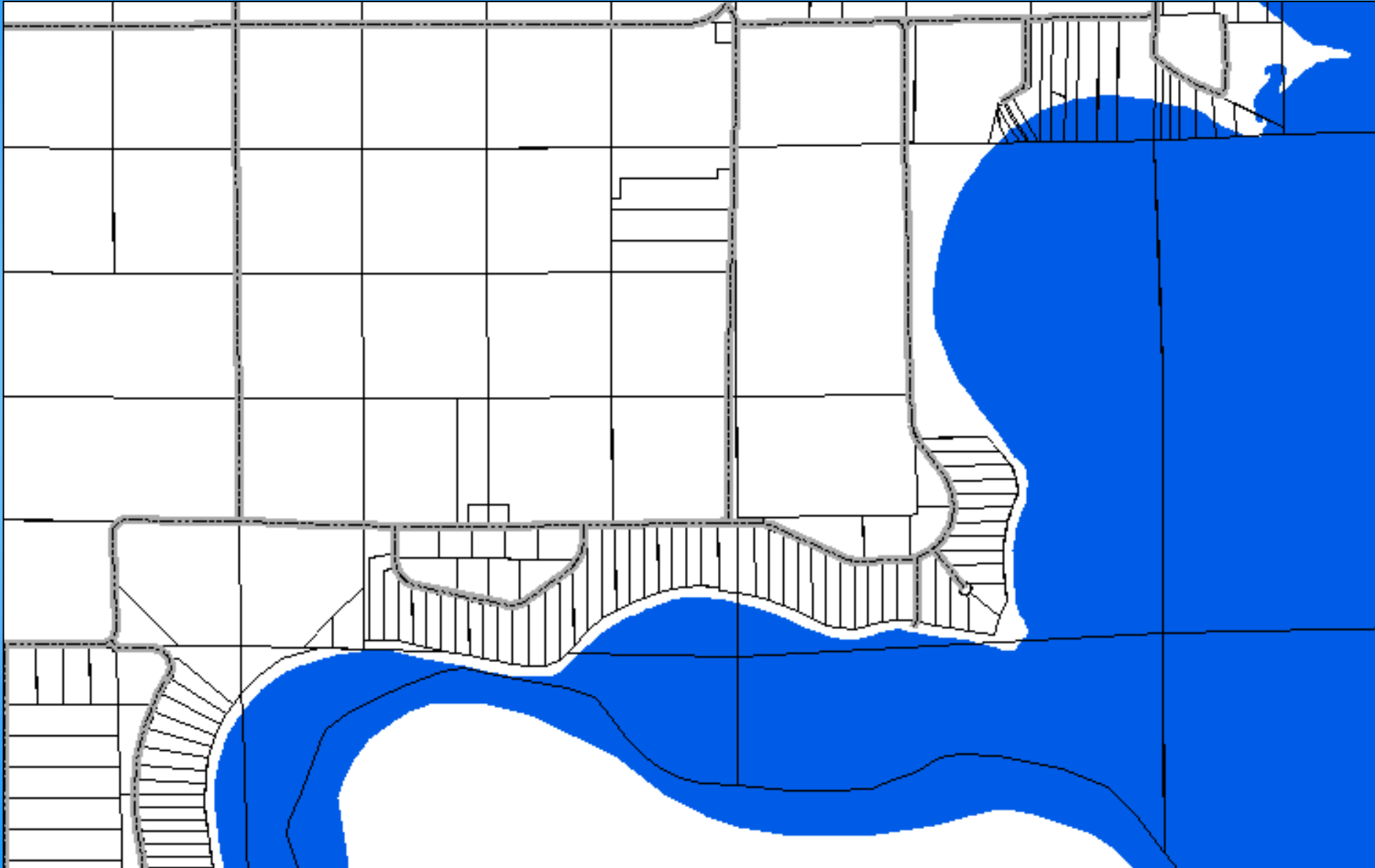
voting wards, flood plains, municipalities, wetland areas or forested areas.



There are many ways to  
view this geographic information.

You can view some layers.

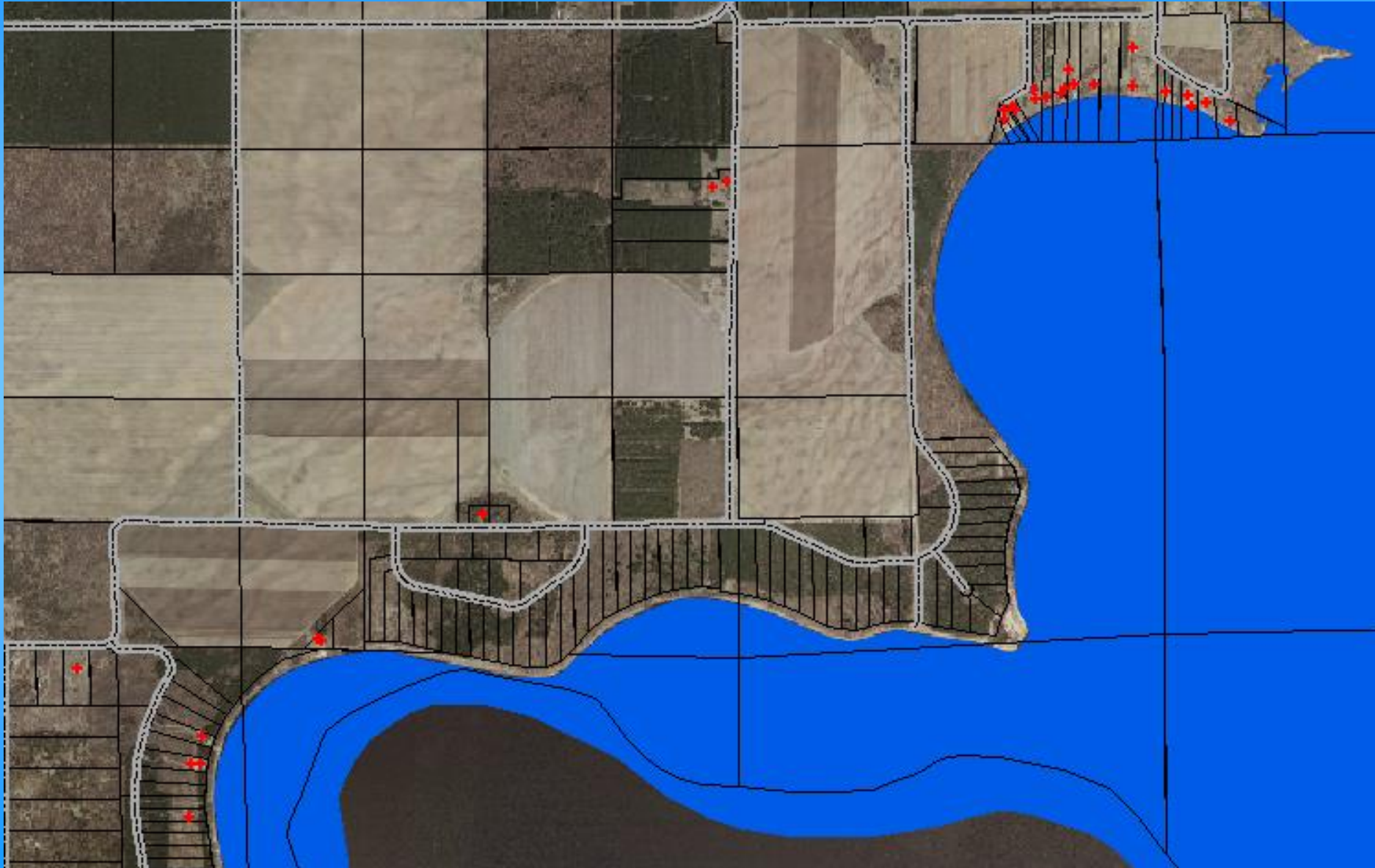
(WATER, LAND PARCELS AND ROAD CENTERLINES)





# You can view all layers.

(WATER, LAND PARCELS, ROAD CENTERLINES, AERIAL PHOTO, AND BUILDING LOCATIONS )



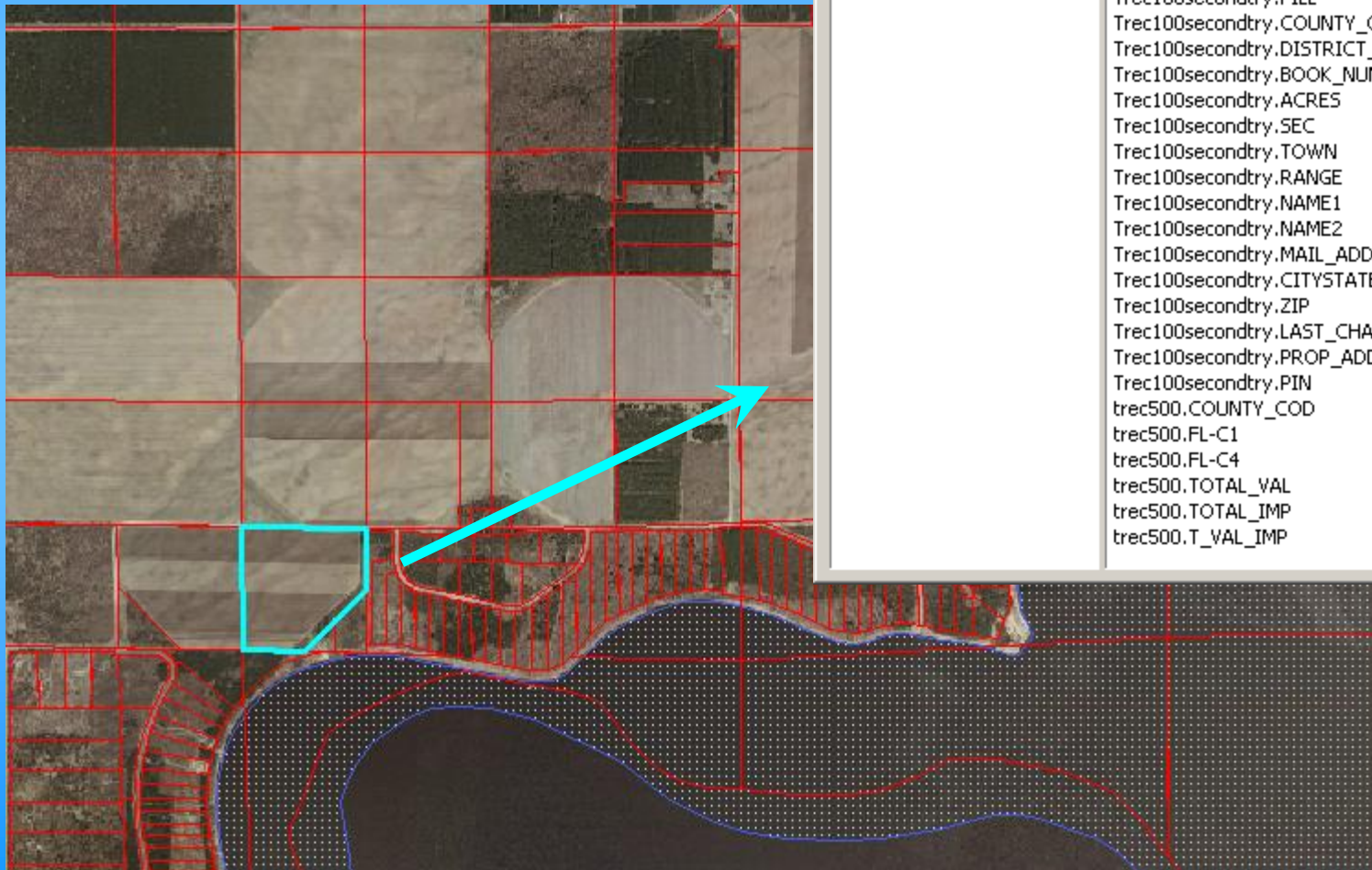
And you can change the way they look.





GIS can be used as a smart map largely because the spatial features are linked to databases.

Each spatial feature is tied to a record in the database



Identify Results		
Layers: <Top-most layer>		
Location: (489785.700827 293404.674831)		
<div>armenia1 polygon</div> <div>290021210</div>		
Field	Value	
polygon:ARMENIA1-ID	933	
Trec100secondtry.FILL	7629002	
Trec100secondtry.COUNTY_COD	29	
Trec100secondtry.DISTRICT_A	TAR	
Trec100secondtry.BOOK_NUM	01	
Trec100secondtry.ACRES	0035.000	
Trec100secondtry.SEC	25	
Trec100secondtry.TOWN	020	
Trec100secondtry.RANGE	004	
Trec100secondtry.NAME1	WISCONSIN	
Trec100secondtry.NAME2	INC	
Trec100secondtry.MAIL_ADD	1810 RIVE	
Trec100secondtry.CITYSTATE	WISCONSIN	
Trec100secondtry.ZIP	54494	
Trec100secondtry.LAST_CHANG	010303	
Trec100secondtry.PROP_ADDRE		
Trec100secondtry.PIN	290021210	
trec500.COUNTY_COD	29	
trec500.FL-C1		
trec500.FL-C4		
trec500.TOTAL_VAL	5700	
trec500.TOTAL_IMP	0	
trec500.T_VAL_IMP	5700	

# Spatial Data

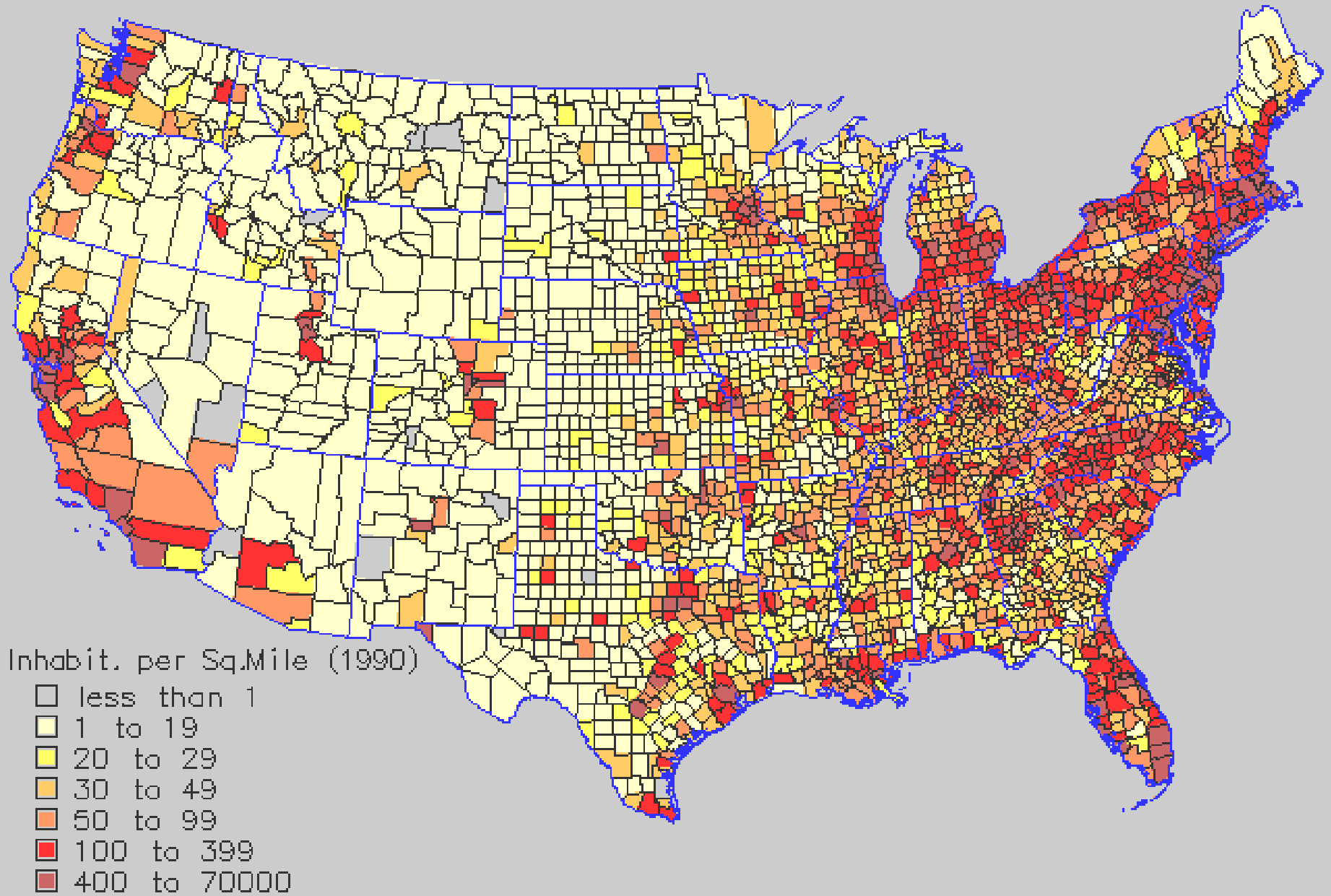
**Data currently on hand** – AutoCAD parcel maps (entire county), DTM (Digital Terrain Model), DEM (Digital Elevation Model), 2010, 2003 color orthophotography, 1999 b/w orthophotography, 1978 black and white hard copy photos, and 1938 black and white hard copy photos.

**GIS layers currently being developed, refined and maintained** – Railroads [Major Roads](#) ROW, Local Roads, Town Halls, Congressional Districts, Senate Districts, Assembly Districts, Local voting wards, Police Departments, Airports, EMS, Fire Departments, Haz\_Mat, Schools, Churches, Waysides, Hospital, ESN, School Districts, Lot Dimensions, Address Points, Driveways, City and Village Address Points, Parcels, Subdivisions, Easements, Survey Lines, Survey Labels, Lot Lines, Lot Labels, ATV Trails, Campgrounds, Parks, Boat Landings, Snowmobile trails, Soils, Dams, Floodplain, Wetlands, Streams, Lakes, Rivers, Minor Civil Divisions, Zipcodes, Fortys, Sections, Townships, Landfill Wells, Bridges, State Sections, County Sections, Winter Sections, Mauston Zoning, TIF District 2, TIF District 3, Mauston Voting Wards, Aldermanic Districts, Extraterritorial Boundary, Extraterritorial Zoning, V. Necedah Zoning, V. Necedah Tiff Dist, Nitrate Level, 2nd Nitrate Levels, and Road Centerlines

**New layers are developed or created as needed, once they are, we maintain them.**



# 1990 US Population



# McDonald's Density

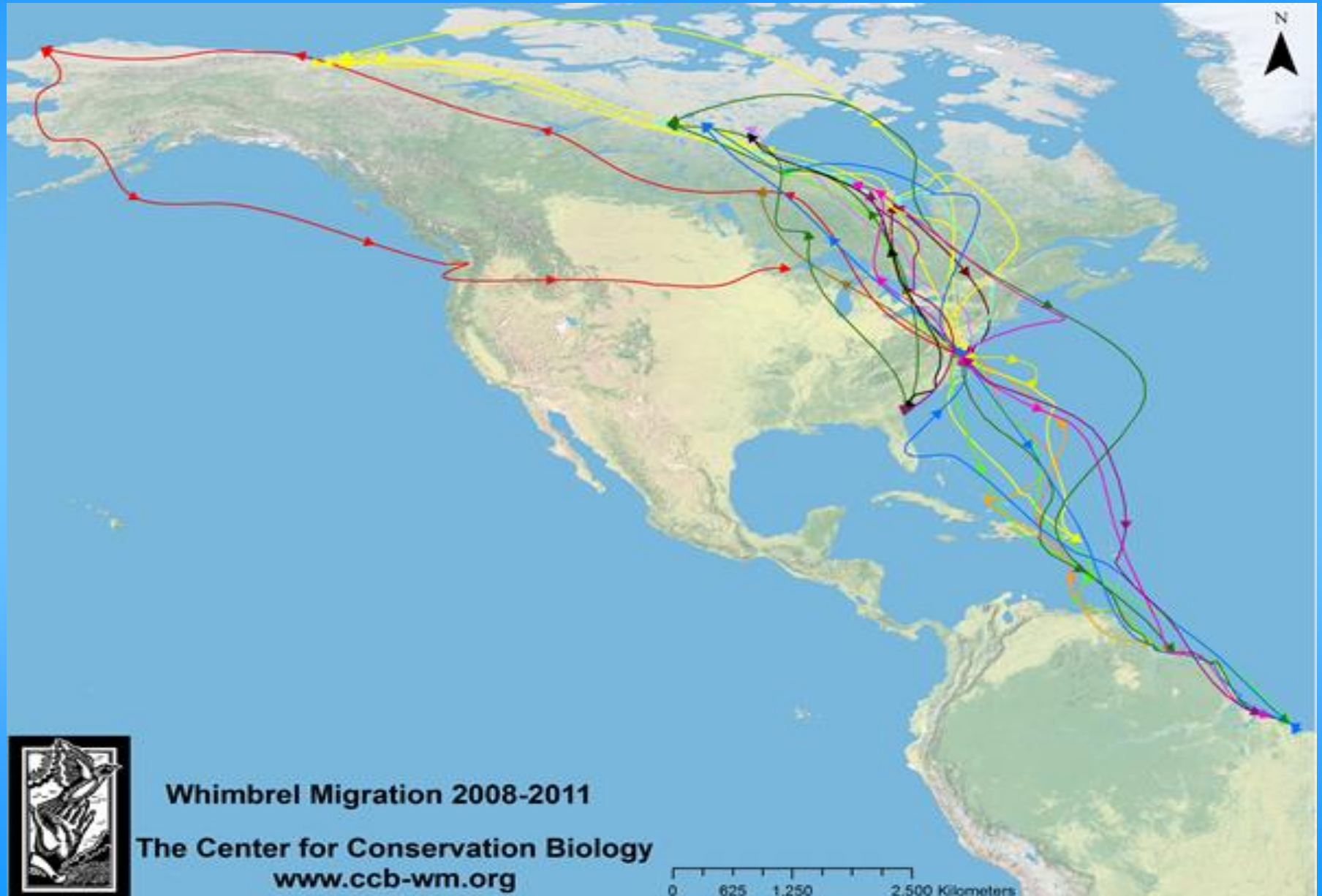


# Ship Traffic





# Migration

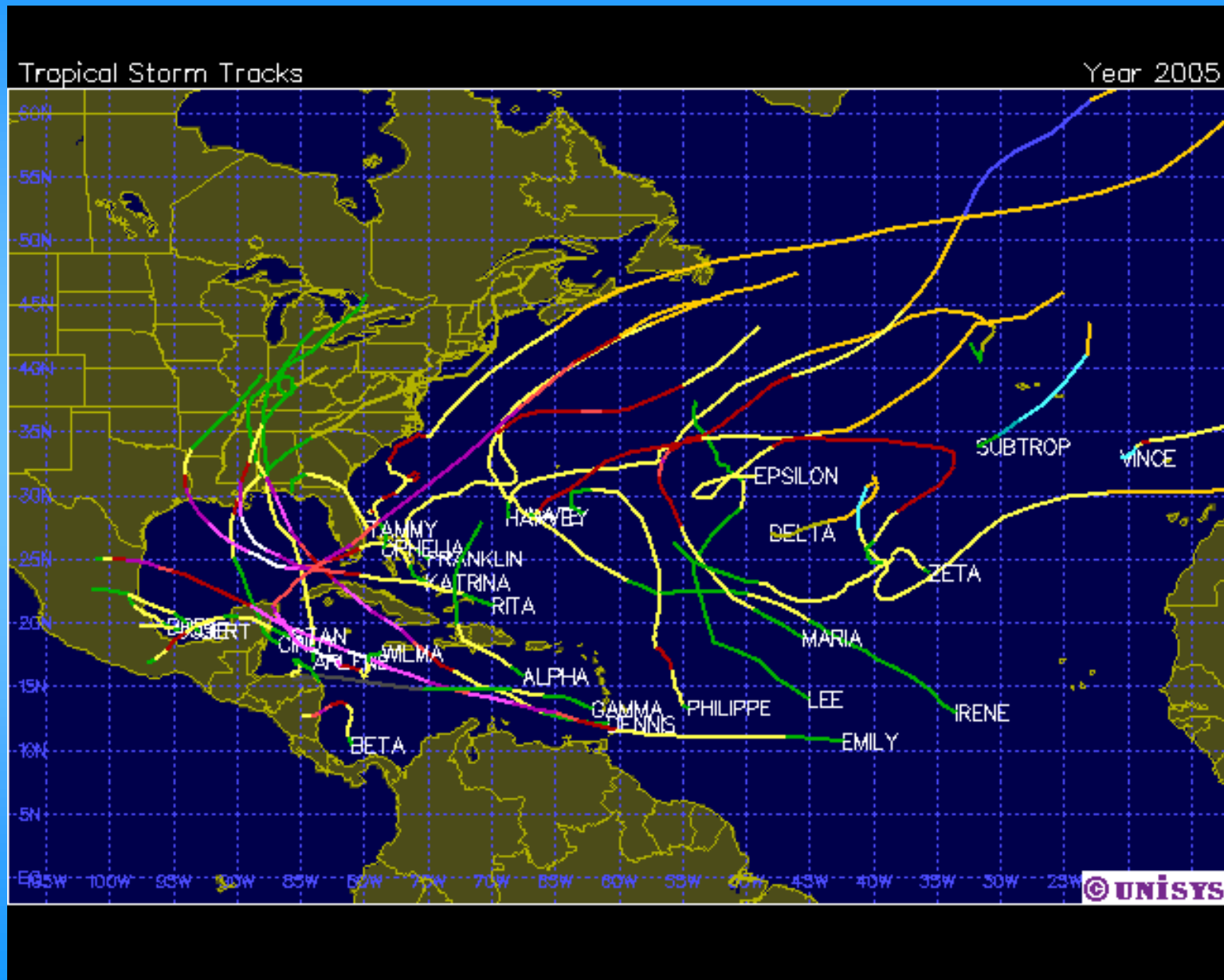


# Storm Tracking

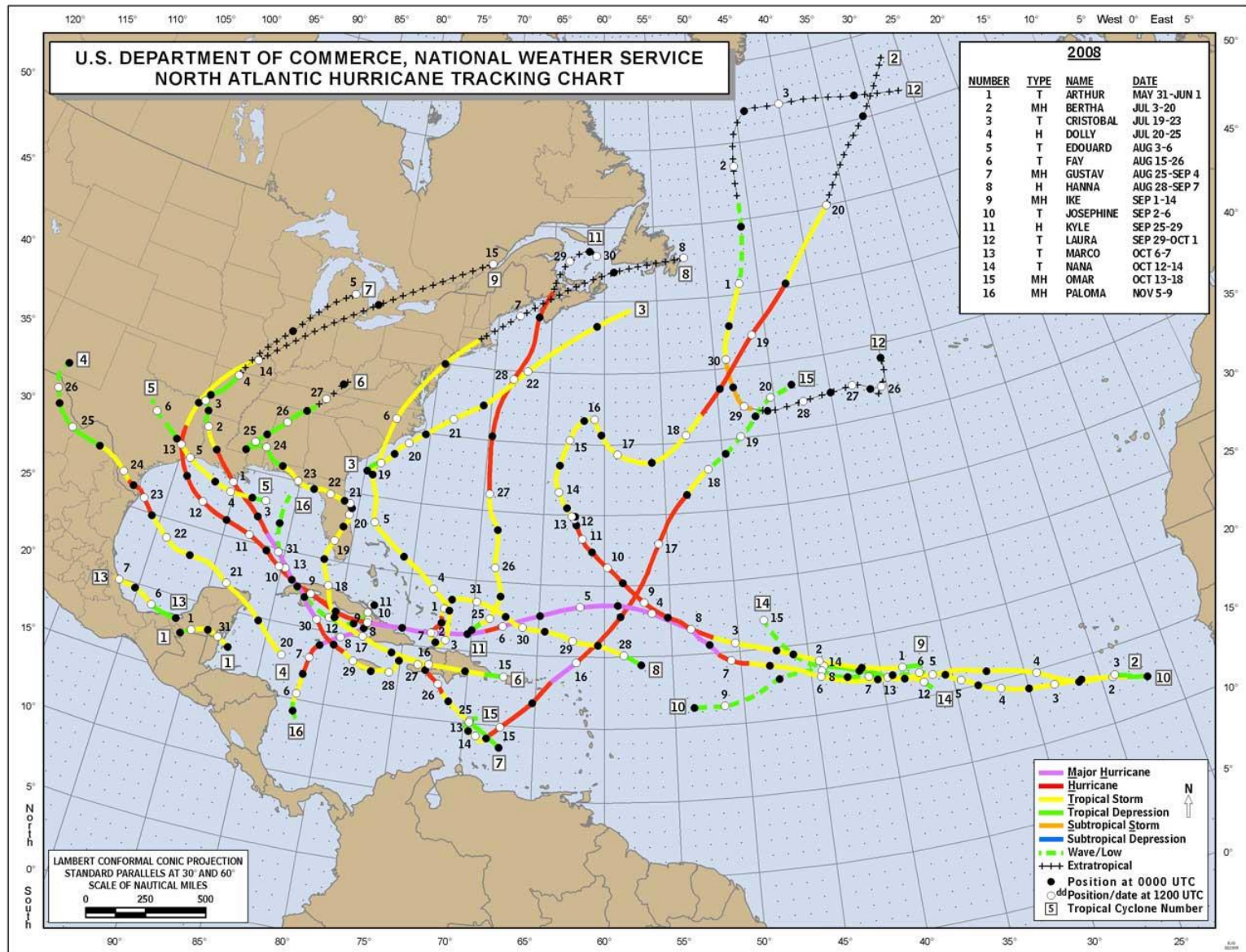




# Tropical Storms



# Hurricanes



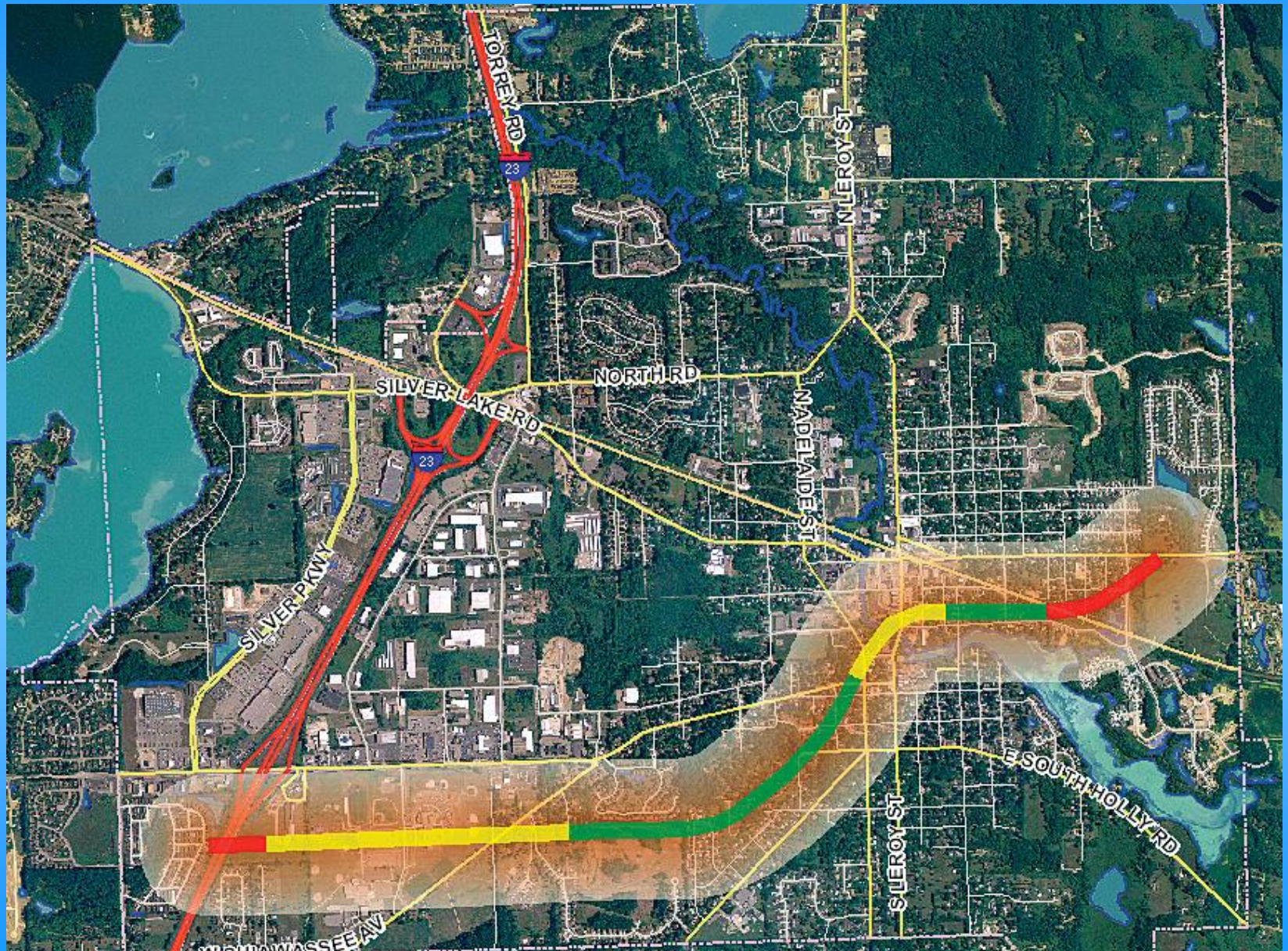


# Hurricanes





# Tornados

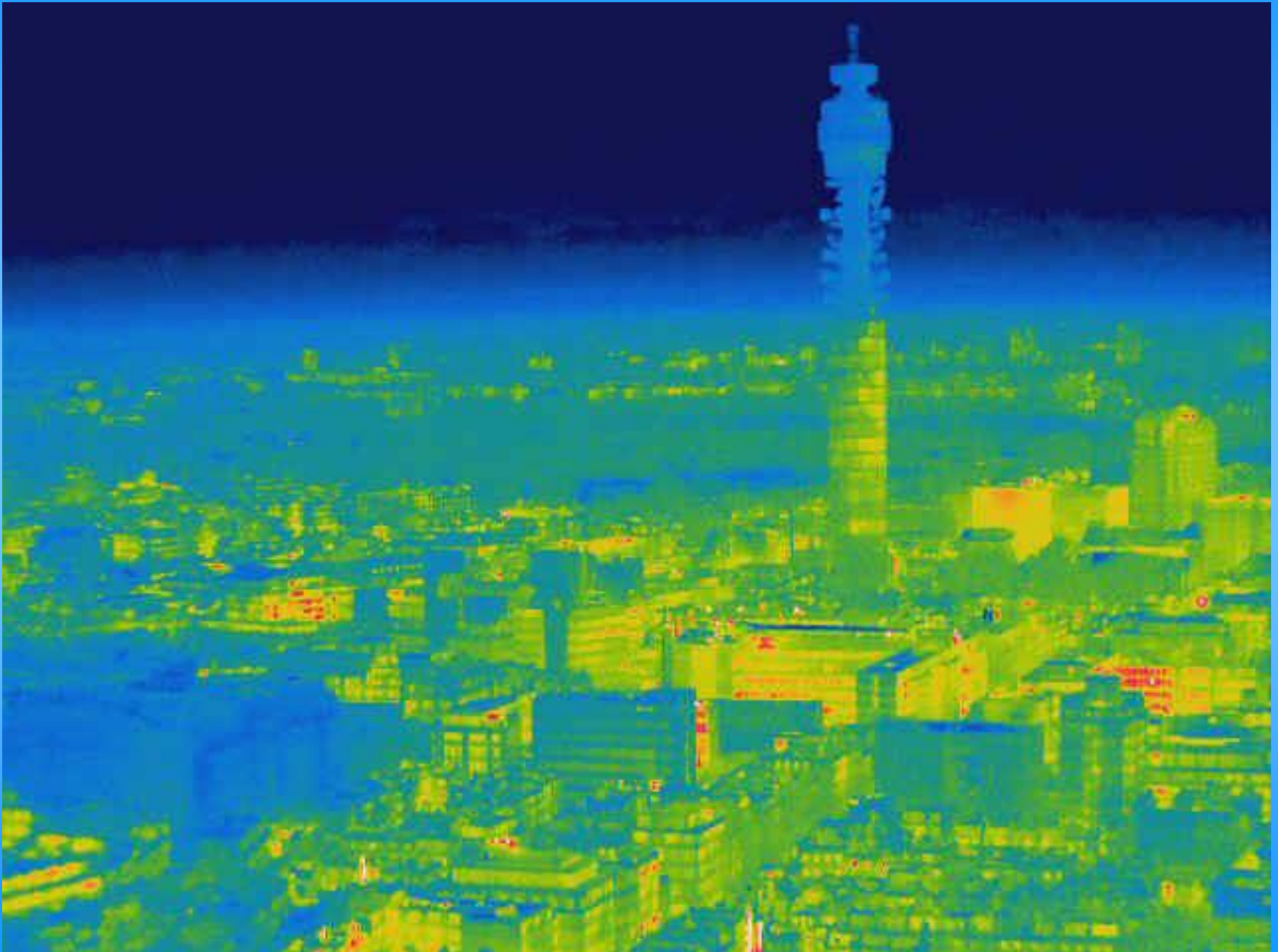




# Infrared



# Thermal Imaging

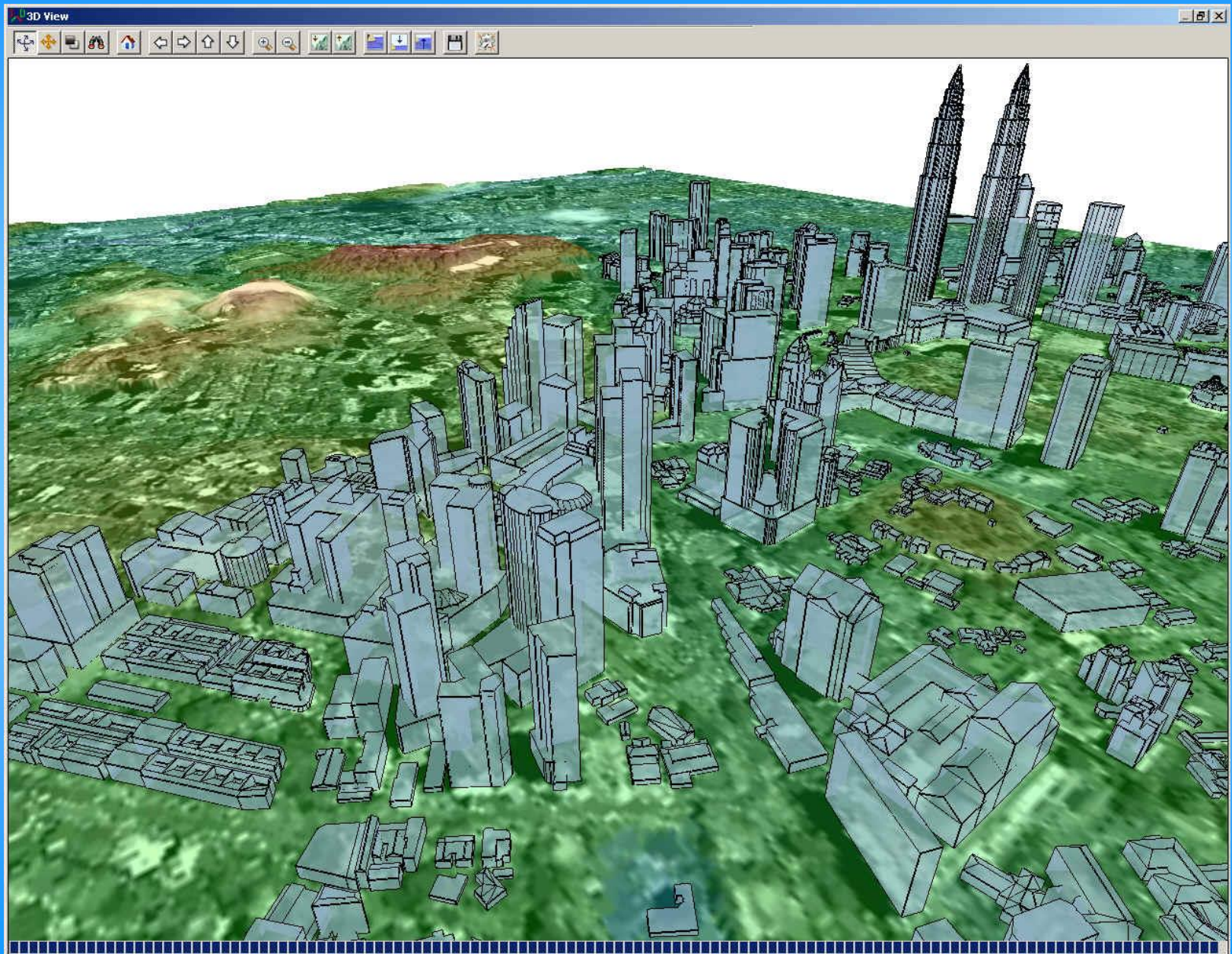




# 3D Buildings



# 3D Buildings



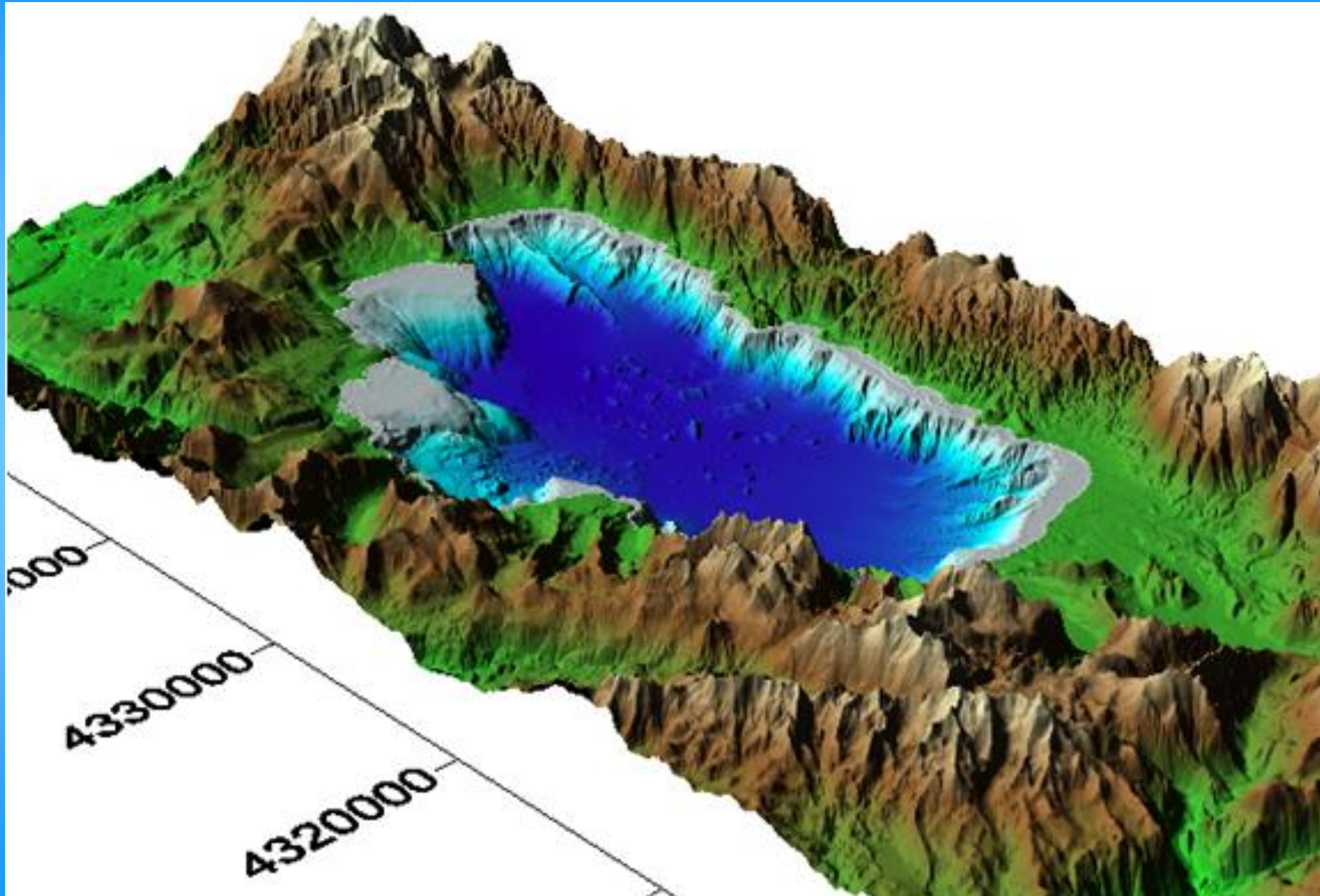


# Landscaping Layout

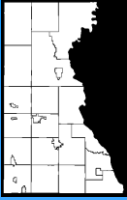




# Elevation Terrain







## Juneau County Land Information

If any of you have questions concerning the nature of GIS, what geographic data we have, or how we are using GIS in Juneau County we would be more than happy to talk with you.

### **Bret Davies, LIO**

GIS/LIS Coordinator/Supervisor

[juneaulo@co.juneau.wi.us](mailto:juneaulo@co.juneau.wi.us)

Phone: (608) 847-9446

### **Liz Housworth**

GIS/LIS Specialist

[liojuneau@co.juneau.wi.us](mailto:liojuneau@co.juneau.wi.us)

Phone: 847-9457