

NOV 5 1953

Whipple Lake Estates  
Sliwa's  
Plat 135  
Drawer 10

# "SLIWA'S WHIPPLE LAKE ESTATES"

PART OF THE N.E. 1/4 OF SEC. 10, T-4-N., R-9-E.,  
INDEPENDENCE TWP., OAKLAND COUNTY, MICH.

AUGUST, 27, 1952.



NOTE: ALL DIMENSIONS ARE SHOWN IN FEET AND DECIMALS THEREOF.

### DEDICATION

KNOW ALL MEN BY THESE PRESENTS, that we, Louis S. Sliwa and Tillie T. Sliwa, his wife, as proprietors, have caused the land embraced in the annexed plat to be surveyed, laid out and platted, to be known as, "SLIWA'S WHIPPLE LAKE ESTATES", part of the N. E. 1/4 of Sec. 10, T. 4 N., R. 9 E., Independence Township, Oakland County, Michigan

and that the streets as shown on said plat are hereby dedicated to the use of the public.

Signed and Sealed in the Presence of:  
Gordon G. Ladd, Notary Public, Oakland County, Michigan  
Louis S. Sliwa (L.S.)  
Lyster C. Ladd, Notary Public, Oakland County, Michigan  
Tillie T. Sliwa (L.S.)

### DESCRIPTION OF LAND PLATTED

The land embraced in the annexed plat of "SLIWA'S WHIPPLE LAKE ESTATES", part of the N. E. 1/4 of Sec. 10, T. 4 N., R. 9 E., Independence Township, Oakland County, Michigan, is described as follows:  
Beginning at a point North 664.2 feet, N. 01° 45' E., 378.50 feet, and N. 02° 54' E., 288.1 feet from the center of Section 10, T. 4 N., R. 9 E., Independence Township, Oakland County, Michigan, thence N. 02° 54' E., 164.28 feet, thence N. 05° 05' E., 313.58 feet, thence Northwesterly along a 17° 07' 47" degree curve to the left, 174.91 feet, said curve having a radius of 335.74 feet, a chord distance of 172.95 feet, bearing N. 09° 36' W., thence S. 88° 39' 34" E., 626.78 feet, thence South 630.62 feet, thence S. 89° 51' W., 633.87 feet to the place of beginning.

### SURVEYOR'S CERTIFICATE

I hereby certify that the plat hereon delineated is a correct one and that permanent metal monuments consisting of bars not less than one-half inch in diameter and 48 inches in length, or shorter bars of not less than one-half inch in diameter and 48 inches in length, or shorter bars of not less than one-half inch in diameter lapped over each other at least 6 inches with an over-all length of not less than 48 inches, encased in a concrete cylinder at least 4 inches in diameter and 48 inches in depth have been placed at points marked thus (... P ...) as thereon shown at all angles in the boundaries of the land platted, at all the intersections of streets, intersections of alleys, or of streets and alleys, and at the intersections of streets and alleys with the boundaries of the plat as shown on said plat.

E. J. Giffels  
Registered Professional Engineer

### ACKNOWLEDGMENT

STATE OF MICHIGAN  
County of OAKLAND... ss.  
On this 28<sup>th</sup> day of SEPTEMBER, 1953, before me, a Notary Public in and for said County, personally came the above named Louis S. Sliwa and Tillie T. Sliwa, his wife, known to me to be the persons who executed the above dedication, and acknowledged the same to be their free act and deed.  
Lyster C. Ladd, Notary Public, OAKLAND County, Michigan  
My Commission expires MAY 14, 1959

### APPROVAL BY BOARD OF COUNTY ROAD COMMISSIONERS

This plat has been examined and was approved on the 5<sup>th</sup> day of OCTOBER, 1953, by the OAKLAND County Board of Road Commissioners.

Robert O. Felt (Chairman)  
Lee O. Brooks (Member)

### MUNICIPAL APPROVAL

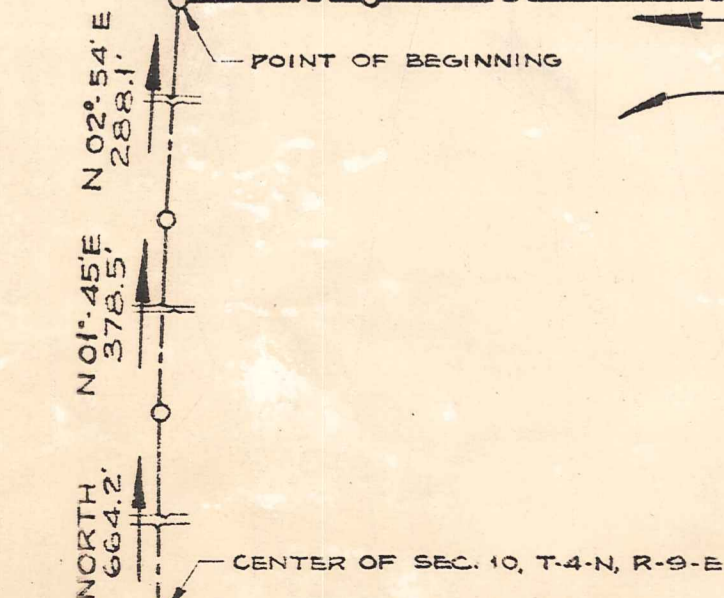
This plat was approved by the Township Board of the Independence Township of Independence at a meeting held June 17, 1953.  
Harold J. Doebler (Clerk)

Approved by Oakland County Plat Board, pursuant to Act 172 of P.A. of 1929, as amended, this 2nd day of November, 1953.  
REGISTER OF DEEDS  
By: [Signature]  
COUNTY BOARD OF AUDITORS  
By: [Signature]

OAKLAND COUNTY TREASURER'S CERTIFICATE  
No. CP 12691  
I HEREBY CERTIFY that there are no TAX LIENS or TITLES held by the State or any individual against the within description, and all TAXES on same are paid for five years previous to the date of this instrument, as appears by the records in this office except as stated.  
Charles A. Sparks, County Treasurer

I = 23°-51'-06"  
R = 335.74'  
D = 17°-07'-47"  
L = 174.91'  
L.C. = 172.95'  
Drg. L.C. N 09°-36' W

I = 25°-40'  
R = 395.74'  
D = 14°-31'-01"  
L = 177.26'  
L.C. = 175.80'  
Drg. L.C. S 07°-45' E



BAILEY'S LAKEVIEW SUB.  
L.51-P.54

I hereby certify that this copy is a true copy of the map or plat forwarded to the Register of Deeds for recording.  
Date November 5, 1953  
Filed in Auditor General's Dept.  
Date November 10, 1953  
Examined and Approved  
Date November 5, 1953

John B. Martin  
Auditor General

Register's Office  
Oakland County, ss.  
Plat of Sliwa's Whipple Lake Estates  
Independence Twp.  
was Recorded this 9 day of Nov A.D., 1953 at 9:46 o'clock A.M. in Liber 70 of Plats  
on Page 8  
Lola Parker  
Deputy Register of Deeds