



January 2024



# Newsletter



## SPONSORSHIP OPPORTUNITIES

[CLICK HERE](#)

The City of Enterprise Parks and Recreation Department is offering sponsorship opportunities for 2024 at our high trafficked sports fields and special events.

In 2023, Festival in the Park brought in over 10,000 people and Spooky in the Park brought in over 5,000 people in just 3 hours. We also had an increase in participation in our youth sports with 600 youth baseball players, 255 youth softball players, and over 400 youth football players.

Increase your visibility by having a banner on one or all of our ball fields and by being an event sponsor.

**SPONSOR TODAY!**

## In this Issue

- Sponsorship Opportunities
- Baseball & Softball Registration
- Basketball Games
- Ongoing Activities
- Ongoing Projects

# BASEBALL & SOFTBALL REGISTRATION

JANUARY 8TH - 19TH 2024

Youth Baseball (ages 4-15) and Youth Softball (ages 5-15) registration begins on January 8th and will end on January 19th at 4:30pm. You can register online or at our office. A copy of birth certificate is required and \$45 fee. For questions, please call our Athletic Department at (334) 348-2681

Online Registration:

<https://eprd.recdesk.com/Community/Program>

In Person Registration:

Enterprise Civic Center

2401 Neil Metcalf Rd, Enterprise, AL 36330

Time: Monday-Friday 7:30am-4:30pm  
closed 12pm-1pm

[Click Here for FAQ's](#)



## BASKETBALL

JANUARY 2024

We are excited to start basketball season! January 2nd is Rec Night at EHS, and the season will officially start on January 4th. Game schedules can be found on our website [eprd.recdesk.com/Community/League](https://eprd.recdesk.com/Community/League)





# SENIOR AEROBICS

## SCHEDULE

Whether you are looking for a fun day out of your home, or a way to stay in shape, this is a class for you! Designed for seniors of all ages, these classes are FREE and open to the public.

Tues, Jan 2 - 9am, Enterprise Civic Center  
Thurs, Jan 4 - 9am, Enterprise Civic Center  
Tues, Jan 9 - 10am, Enterprise Civic Center  
Thurs, Jan 11 - 9am, Enterprise Civic Center  
Tues, Jan 16 - 9am, Enterprise Civic Center  
Thurs, Jan 18 - Cancelled  
Tues, Jan 23 - 9am, Enterprise Civic Center  
Thurs, Jan 25 - 9am, Enterprise Civic Center  
Tues, Jan 30 - 9am, Enterprise Civic Center



# FISHING DAYS

Every third Saturday of the month enjoy public fishing at Johnny Henderson Family Park. Seniors (55 & older) can fish every 1st and 3rd Friday of the month.

Visit [alabamainteractive.org](http://alabamainteractive.org) to obtain a fishing license.



# NEW PICKLEBALL COURTS

## COMING SOON!

Progress is being made at the new pickleball courts. The new courts will be located behind ESCC at the corner of Campus Drive and George C Wallace Drive. There will be 8 courts designated for pickleball use only. Follow us on social media to find out about the opening date!



# 2024 SPONSOR SPOTLIGHT

The City of Enterprise Parks and Recreation Department offers sponsorship opportunities each year at our high trafficked sports fields and special events. We would like to take a moment each month to spotlight a sponsor.

Murphy Family Restaurants is a family owned and operated McDonald's franchise serving the Wiregrass area. Owners Gerry, Cheryl and their son Stephen Murphy operate our local McDonald's restaurant in Enterprise and 30 McDonald's locations across Alabama. They have been a large part of the Enterprise community since 2008, supporting our recreational events and youth sports by being a sponsor, as well as, supporting other organizations across the Wiregrass.



Our department has had the pleasure of not only working with the Murphy family over the years, but also working with their Director of Marketing and Community Outreach, Eddie Byrd who is largely known in our community for his unwavering dedication to promoting their restaurants while supporting community events.

Take a moment out of your day to enjoy one of the Murphy Family Restaurants McDonald's for breakfast, lunch, or dinner. We know you will be 'lovin' it' as much as we do.

*Thank you for Sponsoring with us!*

Become a Sponsor today! Visit [rec.enterpriseal.gov](http://rec.enterpriseal.gov) or [Click Here](#)



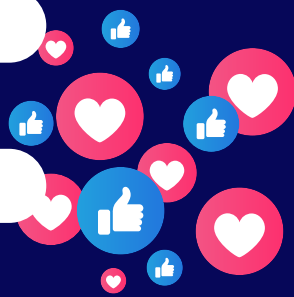
## STAY UPDATED



@enterpriseparksandrecreation



@enterpriseparksandrec



## THIS NEWSLETTER IS SPONSORED BY:



**Enterprise Parks and Recreation**

7.3K likes • 8.5K followers

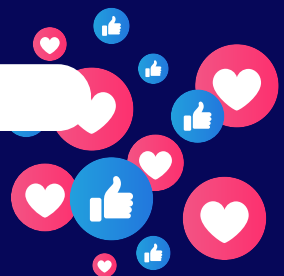
## STAY UPDATED



@enterpriseparksandrecreation



@enterpriseparksandrec





**10,000+**  
**ATTENDEES**



**5,000+**  
**ATTENDEES**



**130**  
**PARTICIPANTS**

Take advantage of the opportunity to have your business/organization logo on our signs, shirts, and social media.

Find out more at the link:

[rec.enterprisecal.gov/about\\_us/sponsorship\\_opportunities.php](http://rec.enterprisecal.gov/about_us/sponsorship_opportunities.php)



**600+**  
**BASEBALL**  
**PLAYERS**



**250+**  
**SOFTBALL**  
**PLAYERS**



**400+**  
**FOOTBALL**  
**PLAYERS**

Gain more visibility for your business or organization by having a 4'x8' banner on one or all of our ball fields for baseball, softball and youth football seasons.

Find out more at the link:

[rec.enterprisecal.gov/about\\_us/sponsorship\\_opportunities.php](http://rec.enterprisecal.gov/about_us/sponsorship_opportunities.php)