



MEMORANDUM

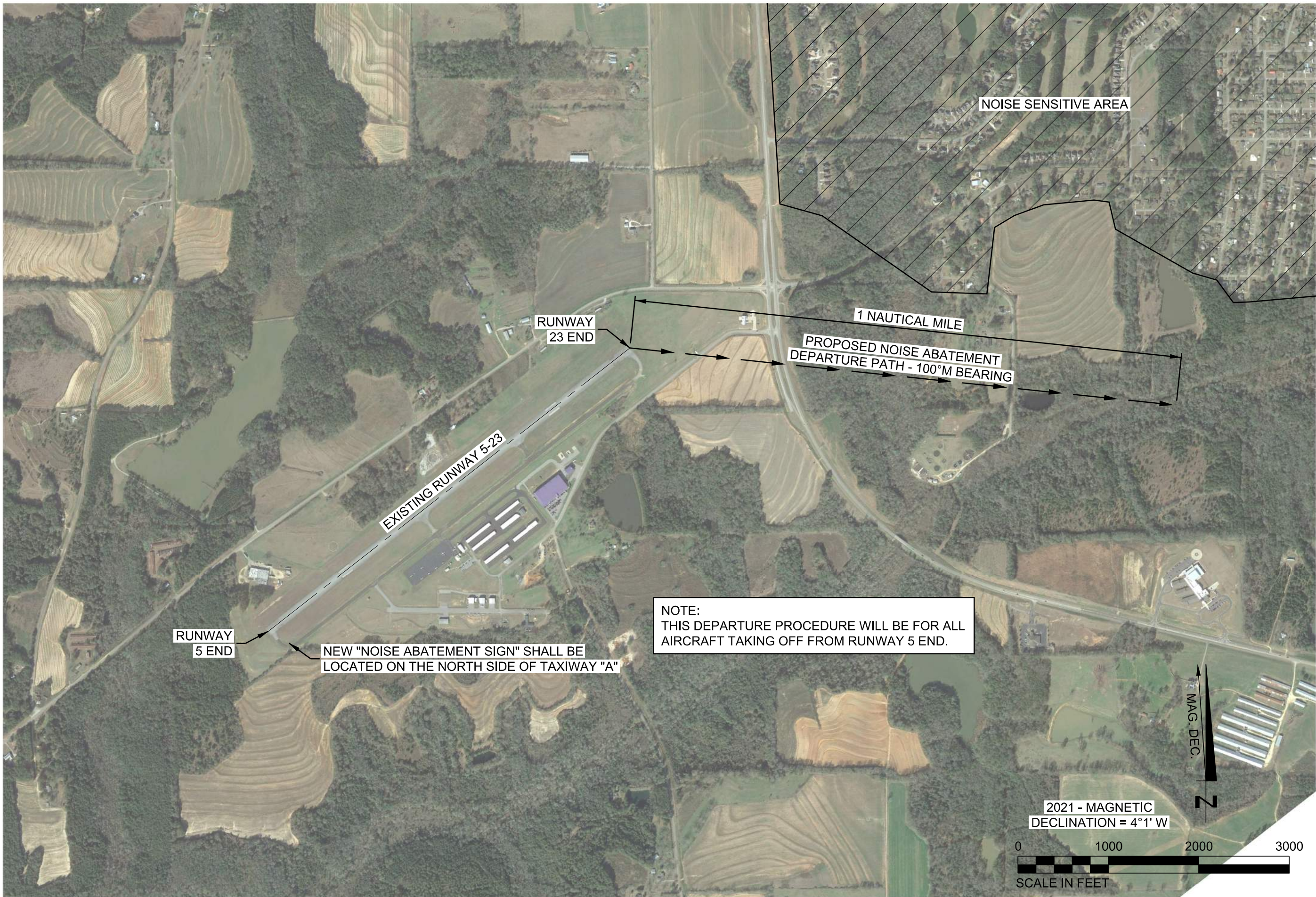
TO: All Pilots
FROM: City of Enterprise
DATE: May 4, 2021
RE: Noise Abatement Procedures

The City of Enterprise (City) has received numerous noise complaints from the neighborhood located northeast of the Airport. In an effort to be a good neighbor, the City is implementing a voluntary noise abatement procedure when taking off from the Runway 5 end. The purpose of this new departure procedure is to try and limit the number of aircraft flying at low altitudes at full power over the noise sensitive area (see attachment 1). Some tenets of the new procedure are as follows:

- The City encourages the use of this new departure procedure, but adherence is strictly voluntary.
- Each pilot must make his/her own decisions regarding weather conditions, prevailing winds, pilot experience, mechanical condition of aircraft, etc. whether they can follow the new departure path or not. If a pilot is not comfortable following the new departure path, they should follow their normal departure protocol.
- Pilot safety is of utmost importance!
- In addition to the new departure procedure, RW 5 will be changed to a right-hand pattern and this will be listed in an upcoming version of the U.S. Chart Supplement ("Green Book" or old Airport Facility Directory publication) both in printed copies and online.
- A new information sign will be installed on the right-hand side of the hold position marking on Taxiway A at the RW 5 end. An example of the actual sign is shown below.

NOISE ABATEMENT
VY - "BEST RATE OF CLIMB"
SOON AS SAFELY PRACTICABLE
TURN RIGHT TO 100°
MAINTAIN 100° HEADING FOR 1 MILE

- There is no change to the departure procedure for RW 23.



DEPARTURE PATH SKETCH

NOISE ABATEMENT
ENTERPRISE MUNICIPAL AIRPORT
ENTERPRISE, ALABAMA

REV.	DR.	CHK.	DATE	DESCRIPTION
	JEC	MJC	4/21/2021	ISSUED FOR REVIEW