

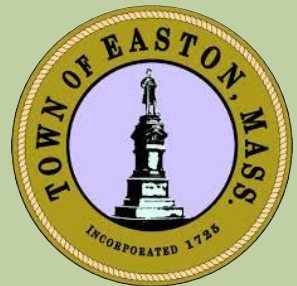
RESOURCES FOR A MORE SUSTAINABLE EASTON

Live More Sustainably to Conserve Resources
and Protect Easton's Natural Beauty

2024 - 2025
Vol. 1



**Environmental
Stewardship
Committee**
Easton, Massachusetts



*One individual cannot possibly make a difference, alone. It is individual efforts,
collectively, that makes a noticeable difference – all the difference in the world!*

– Dr. Jane Goodall, DBE, Primatologist

TABLE OF CONTENTS

Click on each header to go directly to that section.

PURPOSE 03

Intro
How to use the guide

ENERGY SAVING RESOURCES 05

Community Choice Power Supply Program
Energy-saving programs
EV programs and resources

WATER CONSERVATION RESOURCES 10

Town water rates
Stormwater management
PFAS mitigation
Mosquito & tick protection
Water conservation resources


WASTE REDUCTION RESOURCES 22

Town waste removal
Food waste & composting
Waste reduction & disposal resources
Recycle-Reuse-Repurpose resources

ADDITIONAL RESOURCES 35

Appendix

This guide was created to share resources with town residents and businesses to help identify ways to save energy, protect water and land, and reduce the amount of waste produced.

Programs that also help consumers save money while conserving resources are identified throughout. Look for a small  sign for these specific listings.

This is not meant to be an exhaustive guide; rather, we hope this will encourage everyone to explore even more ways to help preserve this town, this state, and this world.

Created by:

Environmental Stewardship Committee of Easton, MA

Christina Refford, Chair

Jamie Stebbins, Select Board Designee

Stephen Drown

Carolyn McCafferty

Amy Spencer

How to Use this Guide:

Linked resources are in **bold blue** type; click on the text to be directed to a webpage with more information.

Phone numbers have been provided as well, when available.

RESOURCES FOR A MORE SUSTAINABLE EASTON

Whether a longtime Easton resident or a newcomer to the town, one thing that unites many is a love for the town's open spaces and unique architecture that distinguishes it from its neighbors.

And with an estimated **15% of Easton's community dedicated to conservation land**, the town's commitment to preserving and protecting its environment has made Easton a special place to live, play, work, and learn.

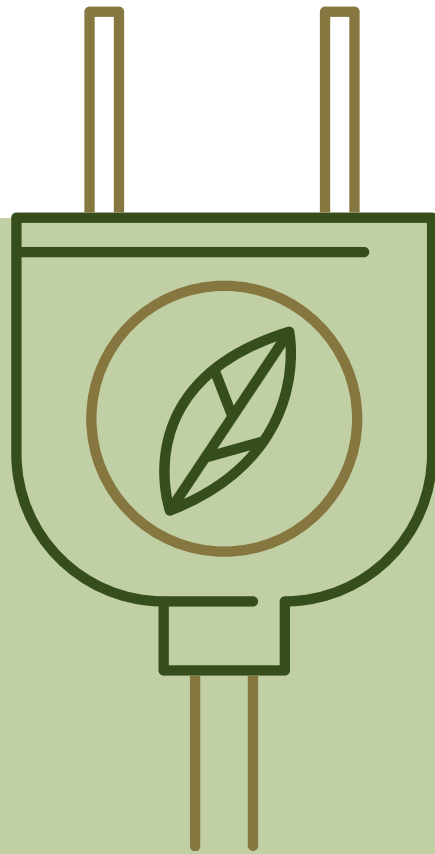
It takes everyone, collectively, to maintain the natural and historical beauty of not only Easton, but of our region and world around us.

Realize that everything connects to everything else.

– Leonardo Da Vinci

Borderland State Park · NRT Sheep Pasture
Clifford G. Grant Management Area · Wheaton Farm
The Rockery · Langwater Pond · Governor Oliver Ames Estate
North Easton Historic District · Beaver Brook · Hockomock Swamp
Whitman's Brook · Flyaway Pond · Long Pond
Bay Circuit Trail · Canoe River Aquifer Area · Swift's Park
Poquanticut Management Area · Dorchester Brook
Black Brook · Tufts Farm · Furnace Village · Red Mill Road Area
Settler's Pond · John E. Grant Management Area

ENERGY-SAVING RESOURCES



A transition to clean energy is about making an investment in our future.

– Gloria Reuben, Actress & Environmental Activist

ENERGY-SAVING RESOURCES

Town Energy: Optional Green Product

Easton's Community Choice Power Supply Program

The Town of Easton's Community Choice Power Supply Program offers a competitive flat rate for electricity negotiated with First Point Power through November 2025.

There are two options for residents and businesses within this program: the default Standard Rate or the **Optional Green Product** which provides electricity using 100% renewable energy, with only the slightest different in price.

The difference per kilowatt/hour (kWh) for 100% renewable energy is only \$.00164 more than standard residential service rates, through November 2025. This represents less than \$2 per month based on national average kWh usage (Source: [U.S. Energy Information Administration](#)).

To choose 100% renewable energy through this program, visit colonialpowergroup.com/easton or call First Point Power at 888-875-1711 to select the "Optional" product.

When enrolled in either of the town's programs, invoicing will still come from National Grid, with no discernable change in service. Customers can opt out or change their electricity provider.

Easton Community Choice Power Supply Program ELECTRIC RATE COMPARISON

Standard Rate*



\$.14740/kWh

100% Green Product*



\$.14904/kWh

Difference: \$.00164/kWh

*On average, a monthly difference of \$1.50**

*Source: Monthly difference based on average of 900kWh/mo per U.S. Energy Information Administration. Easton rates negotiated through November 2025.

ENERGY-SAVING RESOURCES

Mass Save Program

This state program helps homeowners, apartment dwellers, landlords, and businesses make energy-saving improvements to their property through rebates, zero-interest loans, and product discounts.

Some popular rebates and discounts include heat pump rebates, home insulation and air sealing rebates, and 0% HEAT loan financing.

To benefit from the Mass Save Program, an inspection of the property is first required to review the best ways to save energy. Please see the next column for Mass Save partners who can perform these inspections. Inspections can be redone every few years; no commitment necessary.

866-527-SAVE (7283)

Mass Save Income-Based Assistance

Lower-income residents are eligible for enhanced offers through the Mass Save program such as no-cost insulation, new appliances, and rebates on more efficient heating systems.

888-714-3990

HomeWorks Energy

HomeWorks Energy is one of several Mass Save partner companies in our region that provides no-cost energy assessments and recommendations. They will conduct a home inspection for energy-saving recommendations, help secure bids for outside work, and provide assistance in understanding the Mass Save program and available rebates or discounts.

781-305-3319

Other companies that work with Mass Save in this region include: Able Home Performance, Revise, A2Z Energy, Colt Home Services, NEEECO, LLC.

Visit [MassSave.com](https://www.masssave.com) for a full list of providers in our region.

Heat Pump Rebates

Mass Save is currently offering large rebates for the installation of energy-saving heat pumps, with between \$10,000-\$15,000 rebates for whole-home systems. Rebates are also available for partial-home systems, as well as **enhanced, larger rebates for prescreened, income-eligible households.**

866-527-SAVE (7283)

ENERGY-SAVING RESOURCES

Self Help Inc

This Brockton-based nonprofit provides qualified low-income families and individuals in the region with financial assistance on a number of energy-saving programs which may include weatherizing assistance to help reduce energy usage. Many other programs available for qualified residents.

508-588-0447

Massachusetts Weatherization Assistance Program

Provides eligible households (including renters with landlord approval) with home energy efficiency services with priority for households with elderly, disabled, children (6 and under), LIHEAP (Low-Income Home Energy Assistance Program) high-energy costs, and Native Americans.

800 632-8175 for the Cold Relief Hotline

EnergyCENTS: Commonwealth Energy Tool for Savings

Provides a robust search for all of the energy-saving opportunities available to Massachusetts residents, businesses, and institutions. Includes rebates, loans, and financing for electric vehicles, appliances, home energy assessments, solar electricity, and more.

Energy Sage

EnergySage makes it easier to review alternative energy sources for heating and cooling, request information from specific companies, and compare quotes from different solar or heat pump suppliers in the region.

888-802-8806

NEXAMP

Save up to 12½% on a National Grid electricity bill by subscribing to a Nexamp Community Solar farm. Enrollment in this program pushes more solar power into the grid. Available to homeowners and renters.

Massachusetts Clean Energy Center's Clean Energy Lives Here

A guide for residents about bringing clean energy to the home from the Massachusetts Clean Energy Center. Includes information on ground source heat pumps with links to current available rebates from Mass Save.

ENERGY-SAVING RESOURCES

Connected Solutions

Earn incentive for reducing home energy use at peak times during the summer when cooling costs soar.

Homes with smart thermostats can enroll in this optional National Grid program which prompts users to reduce their air conditioning usage at peak times in summer when the grid is overloaded. Homes can “opt out” when prompted each time if they do not want to participate. There are typically 15 peak events every summer – each event lasts approximately three hours.

Participants are rewarded with an annual incentive. A similar program is offered for those with a home battery system.

Charge Smart MA

Earn money off the electric bill for charging an EV during designated off-peak times.

MOR-EV (Mass Offers Rebates for Electric Vehicles)

This state program offers rebates for the purchase or lease of an electric vehicle.

866-900-4223, Press 1 for Electric Cars; 2 for Trucks

Electric Vehicle Charging Station Locator

The U.S. Department of Energy’s Alternative Fuels Data Center makes it easy to search for EV charging locations in Easton, throughout the state, and across the country. Also includes the option to search for alternative fuel corridors, assisting with planning distance travel with EVs.

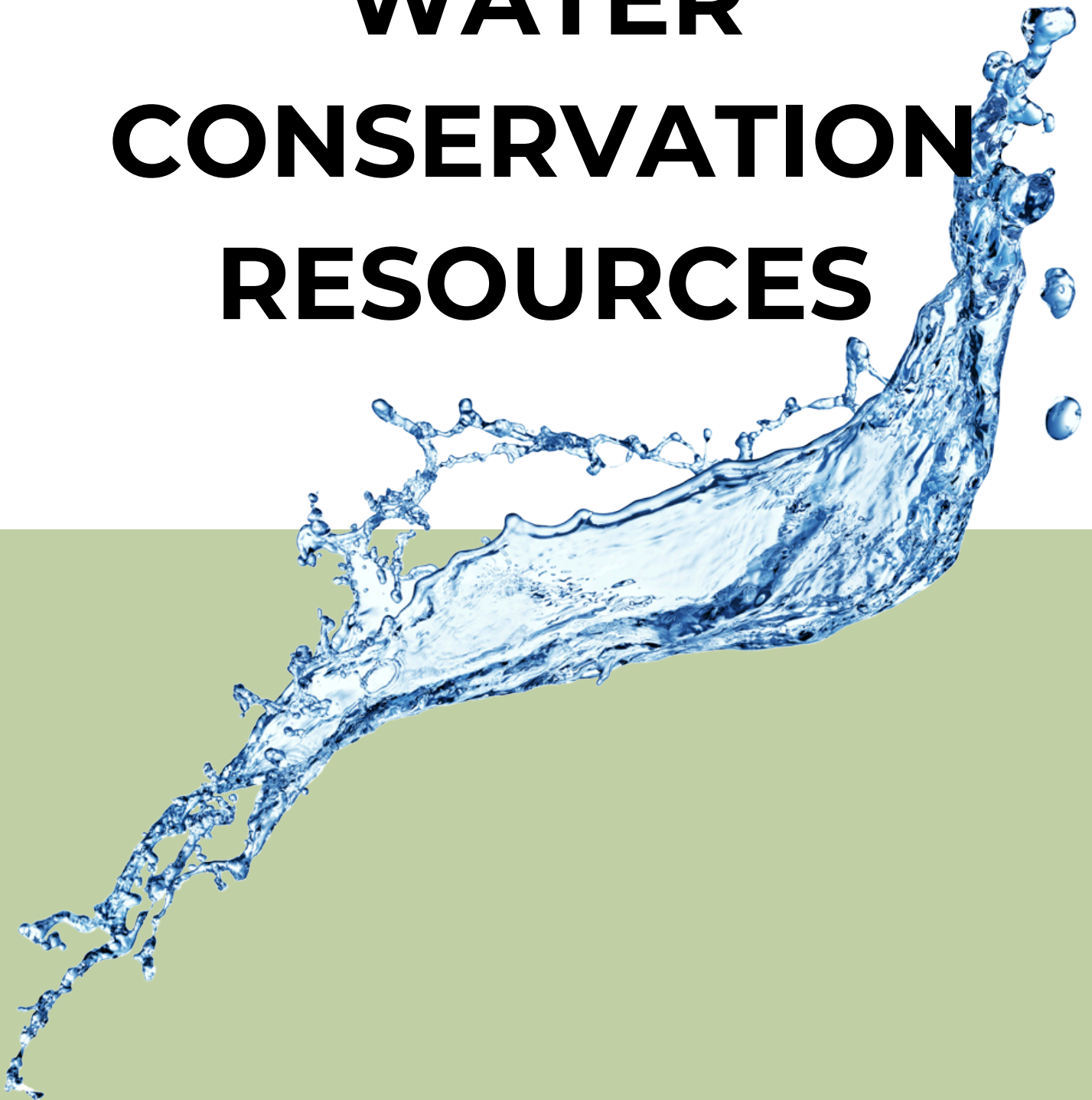
Home Energy Meter Loan Program

Get a better idea of how much electricity home appliances and other plugged-in products are using with the Ames Free Library's Home Energy Meter Loan Program. Borrow a Kill-A-Watt EZ electricity usage monitor from the Library of Things.

508-238-2000



WATER CONSERVATION RESOURCES



All the water that will ever be is, right now.

– National Geographic

WATER CONSERVATION RESOURCES

Town Water Rates

Water Rates

Water rates are billed by the thousand gallons used each quarter. Customers pay a single rate up to 20,000 gallons; this rate increases for gallons 20,001-50,000, and then increases again for water used above 50,000 gallons.

To save money on water, reduce usage by watering the lawn less frequently or not at all, checking for leaks, installing low-flow faucets and shower heads, using car washes (which recycle water), and considering a rain barrel to collect rainwater for gardens and other usage.

508-230-0850 Town of Easton Water Department

Easton 2024 Water Rates



(rates per thousand gallons used each quarter)

WATER CONSERVATION RESOURCES

Easton Water Restrictions

Before turning on lawn sprinklers, get information on town water restrictions at Easton's Water Restrictions Page.

Easton often imposes strict water restrictions from May-November in order to ensure adequate water supply for the town's residents, businesses, and emergency needs. Failure to comply with these restrictions can result in fines on future water bills.

But why the restrictions when there's been a lot of rain?

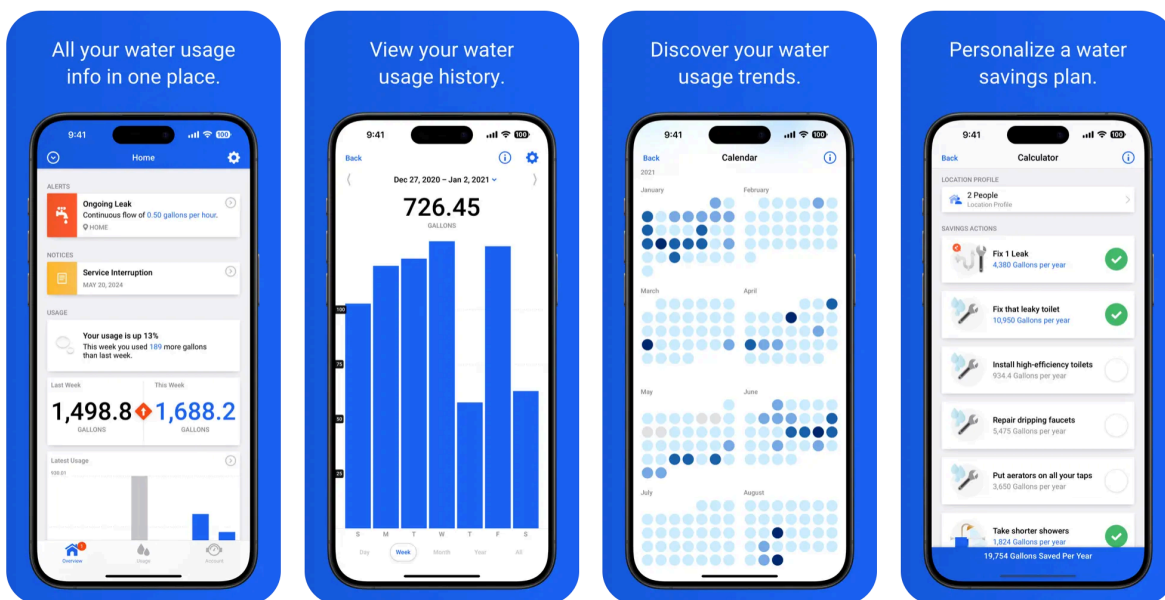
Six reasons why water conservation is important even when it seems abundant.

Eye on Water App

Approximately 4,000 "smart" meters with cellular devices have been installed in Easton. These meters allow property owners to access their water usage either on a computer or smart device.

Residents can check if they have such a meter by downloading the Eye on Water app. This app monitors water usage and can identify ongoing or sudden leaks. It will also provide usage trends and may help users determine ways to cut back, such as using a sprinkler system less frequently.

This app is free to download and use. See below for sample screen shots.



WATER CONSERVATION RESOURCES

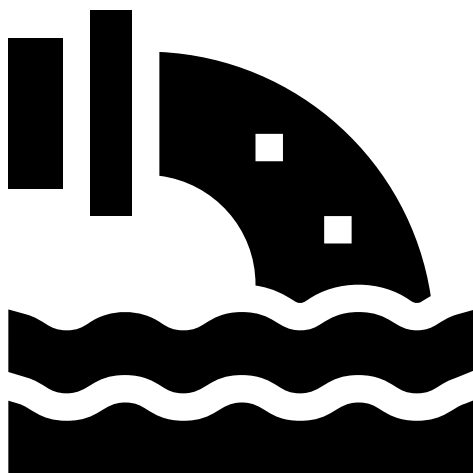
Why care about stormwater and what is the MS4 Permit?

Stormwater is the water that flows off yards, roads, cars, parking lots, as well as through streams, brooks, and rivers, which ends up joining larger water systems. It can be from water sources (hoses, sprinklers, spigots), rain, or snowmelt.

Stormwater runoff is **the leading cause of water pollution in Massachusetts** and New England. If polluted, it can threaten clean drinking water and impact water quality in local ponds or lakes, effecting the public's ability to swim or fish.

The **Municipal Separate Storm Sewer System (MS4) General Permit** refers to the requirements set by the EPA to operate municipal stormwater systems for most cities and towns in the state. Easton's stormwater system is made up of a collection of structures designed to gather stormwater and discharge it into local waterways. These structures include retention basins, ditches, roadside inlets, and underground pipes.

As part of its MS4 permit, Easton must review and update its Stormwater Management Plan annually to meet the requirements of the permit. These requirements are managed by the Town of Easton DPW.

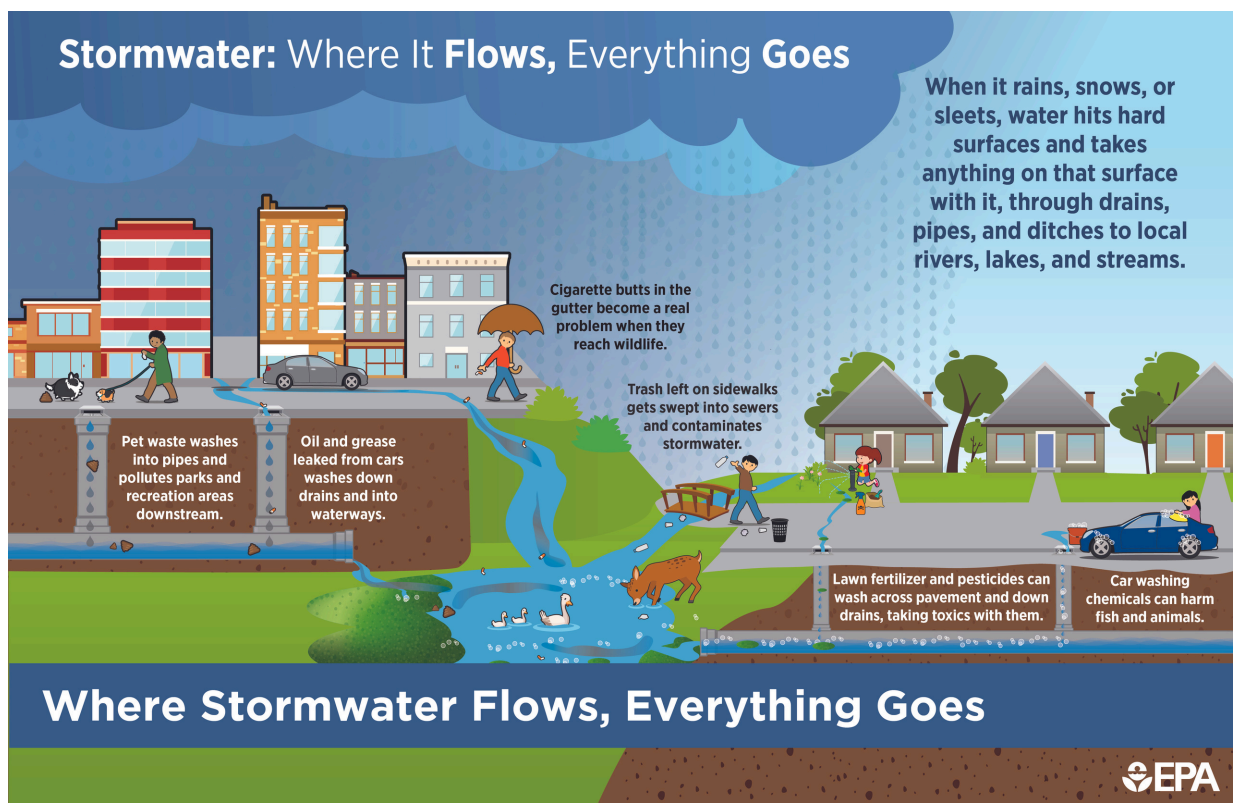


WATER CONSERVATION RESOURCES

How to reduce stormwater pollution

Everyone in town can help reduce stormwater pollution:

- **Reduce reliance** on fertilizers, weed killers, bug sprays, deer or mosquito treatments, etc. that wash off yards and into the street drains.
- Visit local car washes that **recycle their water properly** vs washing soaps and detergents off your car and into the road.
- **Never deposit leaves or yard waste** illegally as its decomposition can contaminate nearby streams or water tables.
- **Properly dispose** of all paints, used motor oil, and other hazardous waste, preferably at **Easton's Annual Household Hazardous Waste Day** in April. Never dump these items down the drain or wash away outside to enter storm drains.
- **Pick up dog waste** and dispose of in the trash. Dog waste carries high levels of harmful E. coli bacteria and other pathogens that can wash into storm drains, increasing public health risks.
- Keep **walkways and driveways clean** and compost the yard waste.
- **Never dump** anything directly into storm drains.
- **Reduce amount of impermeable surfaces** around home or business (blacktop or cement that can not absorb water).



WATER CONSERVATION RESOURCES

What are PFAS and why are they in our water?

“Per- and polyfluoroalkyl substances (PFAS) are a family of chemicals used since the 1950s to manufacture stain- resistant, water-resistant, and non-stick products.

PFAS are widely used in common consumer products as coatings, on food packaging, outdoor clothing, carpets, leather goods, ski and snowboard waxes, and more.”

Source: [MassDEP](#)

Found in thousands of commercial and consumer products, PFAS do not break down easily and, instead, bio-accumulate within the food chain and in the body, often through drinking water. Contrary to popular belief, regular filters do not capture PFAS chemicals. PFAS have been found in town water, well water, and bottled water.

Studies have linked PFAS exposure to possible health issues such as altered metabolism, diabetes, certain cancers, liver disease, and more. (Source: [NIEHS](#))

NOTE: PFAS are a family of chemicals, many which are proprietary to their manufacturers. Some of the most studied chemicals within the family are PFOA and PFOS, but there are around 12,000 PFAS, not all of which can be detected with current tests. [Source: USGS](#)

WATER CONSERVATION RESOURCES

Easton's response to PFAS contamination

Easton has been at the forefront of the PFAS issue in several ways:

1. Easton's Town Administrator, Connor Read, was invited to participate in the **Massachusetts PFAS Interagency Task Force** to develop a statewide response to this issue. The result is the report, ***PFAS in the Commonwealth of Massachusetts: Final Report of the PFAS Interagency Task Force.***
2. Easton joined **national lawsuit against PFAS manufacturers** in 2020.
3. Easton approved \$12M for the construction of **PFAS filtration plants** at wells 1, 2, and 4 which are online and removing PFAS to a level of non-detect as of 2023.
4. The Town approved another \$5M to add PFAS filtration to the Red Mill Road plant for wells 3, 5, and 7 to stay years ahead of the USEPA PFAS standards scheduled to go into effect in 2029.

Learn more about the town's response to PFAS contamination by reading ***The Path Forward on PFAS: Examining State and Local Approaches - Easton.***

Hear from PEER Director, environmental advocate, and local resident Dr. Kyla Bennett in the Bloomberg special feature, ***One Woman's War Against Forever Chemicals.***

WATER CONSERVATION RESOURCES

PFAS: Beyond Water

PFAS have been found in water, air, fish, and soil, globally, including in the blood of unborn fetuses. Along with drinking water, Easton has actively worked with the town's fire department to remove or reduce PFAS exposure from gear and firefighting foam.

The public should also reduce exposure by carefully examining products used, especially if those products include waterproofing or nonstick coatings.

See image below for a sample of products that often contain PFAS chemicals.



WATER CONSERVATION RESOURCES

Massachusetts Water Conservation Toolkit

A comprehensive guide from the state to provide water conservation tips and additional resources.

A companion site, [Why Conserve Water in Massachusetts?](#), helps explain why conservation is so important, even in times of heavy rain or even flooding.


Groundwater Foundation

Learn more about groundwater and how to protect it. Website includes teaching resources for students with lesson plans, activities, coloring sheets, and games to engage all ages.

614-898-7791

Massachusetts Water Resources Authority

Track the status of water in the state including the presence of COVID-19 in wastewater, PFAS in drinking water, and ongoing maintenance and water-testing results.

Also provides [tips for saving water at home](#)  with additional information about low-flow toilets and water-efficient appliances.

617-242-6000

Sustainable Lawn Care Guidelines

Pesticides, herbicides, and other lawn care products can harm the environment by washing into our stormwater and water supply. They can also kill beneficial insects, creatures, and plants, and may contain concerning amounts of PFAS.

Easton's Conservation Commission has published their Sustainable Lawn Care Guidelines, linked above, to help residents maintain their lawns with less negative impact on the environment.

Drought-Tolerant Native Plants

Make lawns more tolerant to drought and lawn watering restrictions while supporting the natural environment by downloading the linked list of drought-tolerant plants that are native to Massachusetts. This list was created by Easton's Green Communities Committee and Garden Club.

Native Plant Trust

Why native plants? Native plants attract birds and beneficial insects, require less water, and are easier to maintain. Get advice on native plants from Native Plant Trust, the nation's first plant conservation organization and the only one solely focused on New England's native plants.

774-519-5555

NATURAL MOSQUITO PROTECTION

Mosquitoes can be much more than a nuisance in Easton, with **EEE (Eastern Equine Encephalitis)** and **WestNile Virus** strains appearing in mosquitoes almost every summer. To reduce their breeding habitat, here are easy and environmentally friendly tips to reduce the number of mosquitoes:

1. **Remove standing water** that collects after it rains or after watering the lawn. Empty pots or planters, children's play toys, old tires, and trash containers. Mosquito larvae can hatch in only 1" of water, so make it a habit to walk yards at least weekly to check for standing water.
2. Keep lawn **free of debris** such as hollow logs, piles of leaves, etc, in which female mosquitoes can find a damp spot to lay eggs.
3. **Empty and refill** bird baths or kiddie pools every few days. Laid eggs need 8-10 days to hatch and become a flying insect.
4. Install a **small fountain** inside a bird bath or fish pond to reduce stagnation. Mosquitoes will not lay eggs in moving water.
5. Plant **mosquito-repelling plants** on property, such as lavender, marigold, and citronella.
6. Put a little vegetable oil or apple cider vinegar in stagnant pools of water to safely kill mosquito larvae. **(Do not do this in birdbaths or ponds with fish or other living creatures!)**

While the State retains the right to conduct aerial spraying to protect the public health, residents can request to be excluded from routine ground spraying performed by the Bristol County Mosquito Control Project. Applications must be submitted annually, property signage is required and requests take 14 days to go into effect. Detailed information can be found here at [Bristol County Mosquito Control Project](#).

Please note that exclusions/opt-out requests will not be honored if the Commissioners of Public Health, the Department of Conservation and Recreation, or the Department of Agricultural Resources determines it is necessary for the public good.

NATURAL MOSQUITO PROTECTION

Outside of spraying bodies or clothing with pesticides, there are other ways to keep mosquitos from biting.

1. **Limit time outdoors**, primarily during dawn and dusk when mosquitoes are most likely to be out.
2. **Cover up**. Wear long-sleeved shirts and pants when outside, especially in wooded or swampy areas.
3. Wear **lighter colored clothing**. Mosquitoes love dark colors, especially black, navy, and red.
4. Apply **lemon eucalyptus** to exposed skin (ages 3+)
5. **Cover** the baby stroller with a mosquito net when out for a walk or at the playground.
6. Keep away from **stagnant water** whenever possible.
7. Remain **odor-free**--mosquitoes are attracted to strong body odor and perfumes.



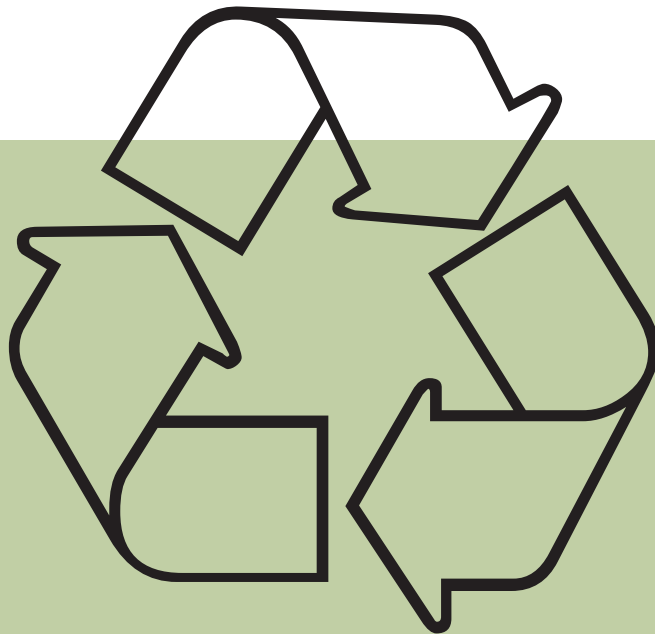
NATURAL TICK PROTECTION

Ticks can render a very dangerous bite to both people and pets. Lyme Disease, Babesiosis, and Anaplasmosis are the most prevalent hazards of an infected tick bite, but other tick-borne illnesses have been on the rise in our region.

To reduce the chance of a dangerous tick bite, here are a few natural tick protection ideas from the [Global Lyme Alliance](#) and [CDC](#):

- **Avoid areas** known to host ticks such as wooded areas, leaf litter, tall grass, beach grass, bushy areas, stone walls, and perimeters where the lawn meets the woods.
- Wear **clothing to protect from ticks**, like long-sleeved shirts, pants, and socks in closed-toe shoes. Light-colored clothing will make it easier to spot ticks.
- Apply **EPA-approved tick repellent** properly (Oil of Lemon Eucalyptus is recommended by the CDC as a plant-based alternative to DEET for ages 3+).
- **Remove clothing** when back indoors and put it in a hot dryer to kill ticks.
- **Examine skin** for ticks daily as the risk of Lyme disease is always there.
- Add **tick-repellent plants** to yard: Some plants produce chemicals that repel ticks or deter small animals that ticks like to live on. Another option is to use cedar mulch or wood chips in the yard as they contain natural repellents.

WASTE REDUCTION RESOURCES



*Everything must go somewhere. There is no "waste" in nature
and there is no "away" to which things can be thrown.*

– Barry Commoner, Biologist

WASTE REDUCTION RESOURCES

Town Waste Removal

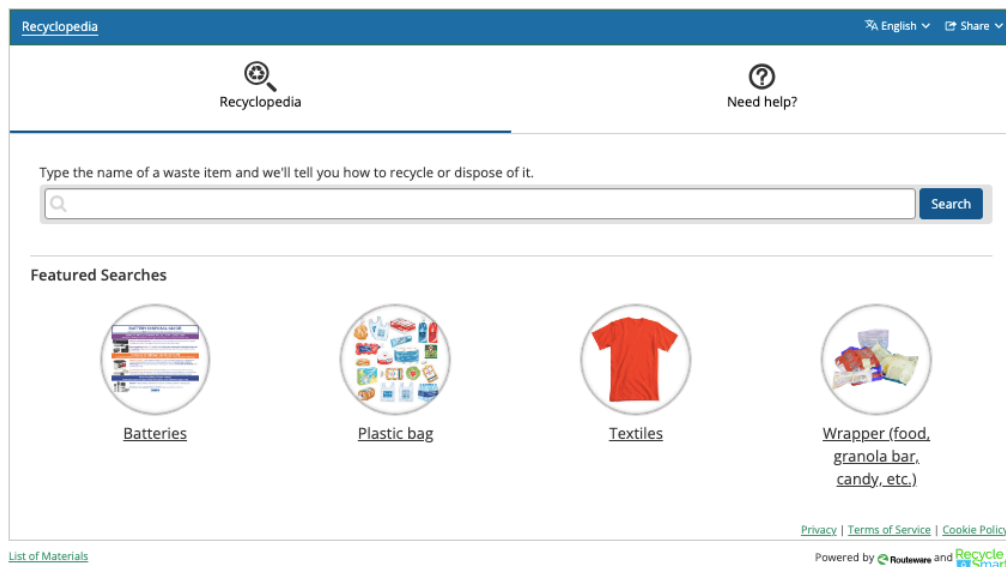
Waste Management (WM) town recycling and waste program

Waste Management provides trash and general recycling pick up for the town of Easton, though participation is voluntary. Trash and recycling are picked up weekly.

Residents who sign up for town trash pickup with Waste Management will be given a 64-gallon trash bin and a single-stream 96-gallon recycling bin. No need to sort recyclable items by type!

Not certain if an item can be recycled? Visit [Recycle Smart's Recyclopedia](#) to check before recycling.

Click on this search box below to be directed to the Recyclopedia page:



There are also six bulky-item pick-up days per year as part of regular service. Customers must register for bulk trash pickup. A list of accepted bulk items is found [here](#).

Outside of the free bulk item pickup weeks, a bulky item or white good may be scheduled for pick-up for a fee by calling Waste Management directly.

800-972-4545

WASTE REDUCTION RESOURCES

Town Waste Removal

10%

What happens when the town's recycling is more than 10% trash?

Waste Management's recycling trucks are randomly inspected for improperly recycled materials (known as *contamination*) that must then be diverted to landfills for disposal. When the percentage of contamination exceeds 10%, the town is charged a contamination fee for the tonnage over 10%. **Contamination charges are passed onto the residents in the form of higher trash and recycling rates.**

Easton's most recent audits have all had over 10% contamination.

August 2022: 11.1%

June 2020: 15.1%

Sept 2019: 15.8%

July 2018: 12.9%

How can these rates be lowered?

- Learn what can and cannot be recycled by using the [Recyclopedia](#) before trying to recycle an item.
- Empty and rinse out containers of food or liquids since food waste can contaminate otherwise recyclable materials.
- Remember that just because an item IS recyclable doesn't mean it can go in the weekly recycling bin. Plastic film, shredded paper, Styrofoam, etc *may be recyclable* **but only through channels specifically for those items.**
- **One person's trash is another person's treasure.** Consider giving away reusable items before you try to recycle them.
- **When in doubt, throw it out.** Do not engage in "wishcycling" which is the hope that something that probably isn't recyclable will be recycled if it's put in the recycling bin. That just creates more trash and costs money.

WASTE REDUCTION RESOURCES

Recycle Smart (and safely)

These FIVE items should **never** be put into recycling bins:

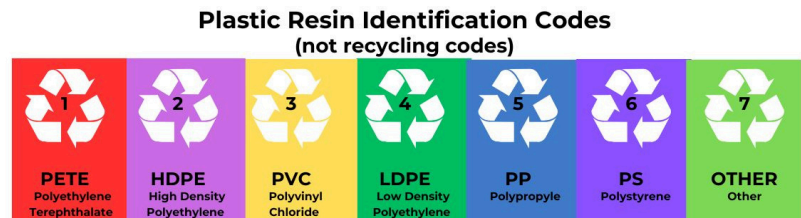
- 1) Lithium batteries
- 2) Propane tanks (empty or full)
- 3) Chains/ropes/hoses (all "tangles" that get wrapped around the rollers and have to be manually removed)
- 4) Plastic bags and other flimsy plastic film
- 5) Excess food or water, often left in jars, cans, and bottles

Some of these items could seriously hurt employees working at the plant; others can contaminate loads of recycling, making them unsuitable for future use.

Ignore the triangle!

It is a misconception that the triangle on the bottom of plastic containers indicate whether or not an item is recyclable. These marks merely specify the resin type of the plastic.

Instead of this:

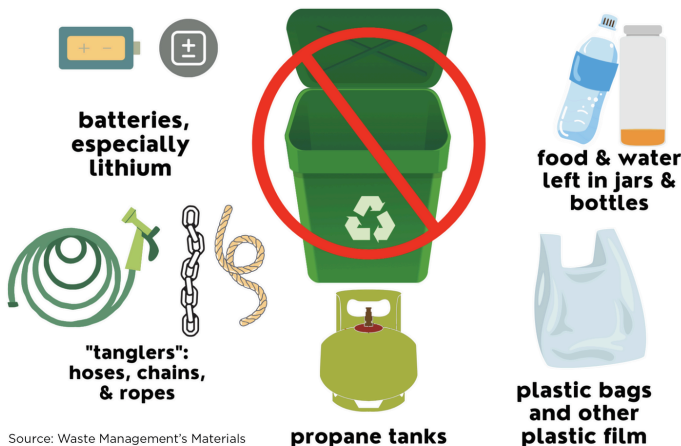


Focus on this:

Recycle plastics by shape: *Bottles, jars, jugs, and tubs.*



5 ITEMS THAT DO **NOT** BELONG IN THE WEEKLY RECYCLING BIN



Source: Waste Management's Materials Recovery Facility, Avon, MA

WASTE REDUCTION RESOURCES

Reducing Food Waste

Massachusetts estimates that fully 25% of the waste stream, after recycling, is made up of food waste. Food rotting in landfills also produces methane, a potent greenhouse gas.

In 2022, Massachusetts placed a ban on the disposal of food and other organic wastes from businesses and institutions that generate more than one-half ton of these materials per week. While this ban does not affect individuals, learning how to keep food out of the waste stream is still enormously important.

- Plan meals ahead using up what is in-house first
- Google ingredients plus the word “recipe” to get meal ideas that use up food before it spoils
- Buy loose nuts, grains, etc to control quantities
- Plant frequently used herbs to snip off just what you need, as needed
- Organize the refrigerator for easy access
- **Understand “use by” and “best before” dates**
- Use clear containers so that food isn’t hidden and forgotten
- Make stock with scraps/leftovers
- When ordering take out, ask for no extra condiments (as well as no utensils, napkins) if you’ll be eating at home



WASTE REDUCTION RESOURCES

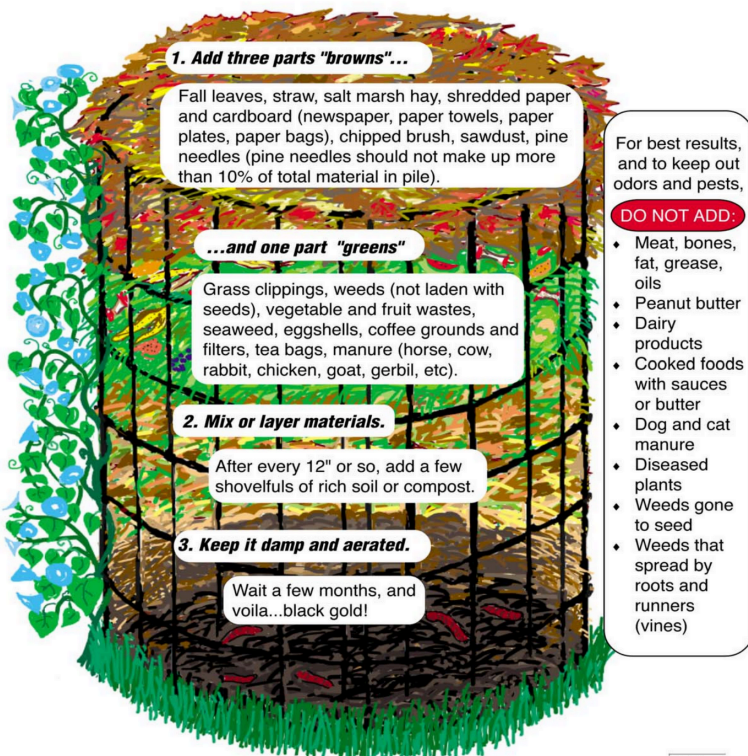
Home Composting

Composting removes food waste from our landfills and helps turn food scraps into rich compost for soil. Setting up a home composter is easy to do and can help residents use less pesticides on their gardens and lawn.

Interested in composting? A **low-cost compost bin** from one of our neighboring towns may be available. See this flyer for more information on setting up a home composting bin.

Composting is easy!

To make compost, just follow these simple steps:



Prepared by the Massachusetts Department of Environmental Protection



Black Earth Compost

Sign up for biweekly residential compost pickup to reduce food waste in trash. Starter kits include a small indoor compost collector, a larger outdoor bin, and bin liners.

Unlike traditional home compost bins or piles, Black Earth Compost sends waste to industrial compost facilities which accept almost all food scraps including meat, dairy, bones, and certified compostable serveware due to the high-heat generated in their compost facilities. This reduces the amount of regular trash produced.

978-290-4610

WASTE REDUCTION RESOURCES



In Massachusetts, leaves cannot be burned, tossed in a trash can, or dumped near a body of water, down a storm drain, or near wetlands. However, there are some options for disposing of leaves:

1. Mulch: Use a lawn mower to chop up leaves to form a thin layer of mulch on the lawn. The leaves will gradually break down and enrich the soil.
2. Compost! A compost pile full of food scraps and other "greens" will benefit from a valuable layer of brown leaves.
3. Hire a landscaping company to do a yard cleanup. They will remove leaves and dispose of them properly and legally.
4. Bag up leaves and take them to a site that has been registered with the Massachusetts Department of Environmental Protection. Two local places accepting yard waste (for a fee) are:

Bridgewater Farm Supply (508-697-0357)

South Ridge Farm & Nursery in Walpole (508-668-0401)

*Environmental tip? **Leave the leaves alone** until late spring to benefit small creatures and beneficial insects! Even setting aside part of the lawn for this reason is worthwhile.*

WASTE REDUCTION RESOURCES

Reduce Remodeling and Construction Waste

Before beginning a remodeling or construction project, consider what materials may be reused or find the proper channels for disposal of waste. Remember to ask your contractor to recycle cardboard, glass, and metal waste. For larger quantities and pieces, some resources to consider:

Old Colony Habitat for Humanity ReStore

Accepts donations of new and gently used building materials, appliances, and furniture for resale to fund community projects. Please call ahead before bringing materials to donate.

508-639-9577

Boston Building Resources

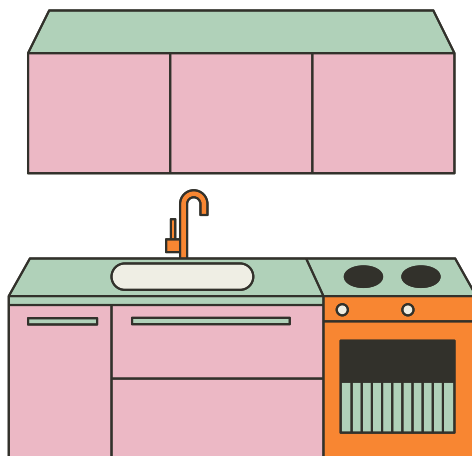
Donate doors, windows, kitchen cabinets, clean masonry, and more to be used for other building projects. Contact them with donation request to confirm acceptance.

617-665-8753 or donations@bostonbuildingresources.com

Upcycle

Local organization working with architects, contractors, homeowners, local government agencies, and others interested in reducing waste and increasing reuse of their building materials. Will accept gently-used building materials for reuse.


617-335-0948



WASTE REDUCTION RESOURCES

Easton Hazardous Waste Day

The Department of Public Works' Division for the Easton Water Division hosts a household **Hazardous Waste Day** for residents each spring. Many items are accepted at no extra charge in order to keep hazardous waste out of the traditional waste stream and the town's waterways.

In addition to hazardous waste, items collected include propane and waste oil, tires, textiles, and electronics (a fee may be charged for some items). Free document shredding available as well. 

508-230-0800



WASTE REDUCTION RESOURCES

Single-Use Plastic Shopping Bag Ban

Single-use plastic shopping bags were banned for distribution in Easton at a Special Town Meeting on November 12, 2019. Please bring reusable bags when you go shopping to reduce waste and recycling contamination in our town.

Many retailers have bins at the front of their store to recycle any leftover plastic shopping bags, along with other thin-film plastic such as plastic bread bags, produce bags, and clean plastic wrap.



Terracycle

Find locations for hard-to-recycle items such as squeeze bottles, food pouches, toothbrushes, and even small appliances.

Styrofoam disposal

Clean white styrofoam may be recycled by **Insulation Technologies Inc.** in Bridgewater, but not in Easton's recycling pickup. Accepted: styrofoam egg cartons, NON-biodegradable packing peanuts, foam coolers, packing foam, and food trays/cups. Must be clean: no leftover food, liquid, trash, or dirt. Remove any stickers, labels or tape. If the material does not snap when bent, it is not accepted.
508-697-6926

Plastic gardening trays/pots

Check at point of sale to see if trays/pots can be reused by retailer.

Shredded paper

Shredded paper should never go into recycling bins; the paper sticks to other items and can contaminate an entire load. Please 1) add to compost bin, 2) bag and trash it, 3) or check with a local shredding facility for drop-off options.

WASTE REDUCTION RESOURCES

Textile Recycling

Textiles (clothing, towels, bedding, curtains, and fabric) are banned from regular trash disposal bins in the state of Massachusetts. Instead, donate no-longer-wanted textiles in the following ways:

HELPSY is an Easton partner that recycles clothing and textiles. Simply schedule an appointment for a free pickup of 3+ bags.
800-244-6350

Bay State Textiles' drop-off bins are located on the Easton Public Schools campus. School organizations earn money based on the weight of the textiles received for recycling.
617-877-2432

Give away reusable clothing, accessories, bedding, etc using Facebook groups (Gifts of Easton, Buy Nothing) or Freecycle.org, or drop off items in good condition to thrift shops (Goodwill, Salvation Army, Savers, Lion's Club Thrift Store), donate them to charity, or resell the best items directly or via consignment.

Clothes hangers

Check with local dry cleaners for clothes hanger recycling.

Mattress Disposal

Mattresses are banned from regular trash disposal in the state of Massachusetts. All mattresses must be recycled. Two resources to consider:

- **HandUp Mattress**, (774) 271-8744, to make an appointment for curbside pickup of a mattress and/or box spring.
- **LRP Recycling**, (508) 879-1732, in Medway (by appointment, drop off only).

The Easton Lion's Club Thrift Store

Three-stories of gently-used goods for sale to the public, and the funds raised support the Club's mission. Donations are also regularly accepted, making this an excellent resource to pass on items that are no longer needed.
508-230-5466, 192 Washington Street

Gently Used Books

Donate to the **Ames Free Library's Friends Book Sale Room**. Donations are resold to support Library programs. Additionally, the Library has **a list of several other book donation options**.



Medical Equipment to Borrow


Easton's Council on Aging loans walkers, wheelchairs, canes, and other medical equipment to residents at no charge.
508-230-0690

WASTE REDUCTION RESOURCES

Electronics Disposal

Check Easton's [Covenant Congregational Church](#) for electronics recycling events. Both Best Buy and Staples also accept small electronics for recycling as does [Brockton-based uBreakiFix](#). Also check with manufacturers for their recycling programs.


Printer Cartridges

Check with retailer at point of sale for info on printer cartridge recycling programs. [EveryCartridge.com](#) includes links to many different options including [cartridgeforest](#) which partners with Trees For the Future to plant two trees for every *unused* cartridge received. Or earn cash for recycling empty or unused cartridges with [InkRecycling.com](#). 

Batteries and Tech

Additional resources for recycling batteries and technology can be found at the following websites:

[Recycling Services at Staples](#): Tech, batteries, printer cartridges

[Walmart Trade-In](#) : "Gadgets to Gift Cards" 

[Amazon.com](#): Recycle & trade in electronics

[Batteries Plus](#): Recycle batteries, lightbulbs, and small electronics

WASTE REDUCTION RESOURCES

Residential Sharps Program from the Town of Easton

Easton residents are able to bring household sharps to Easton Fire Department - Station 3 at 413 Bay Road during approved hours. Please see link (above) for details.

Sharps must be secured in capped, puncture-resistant plastic containers, such as laundry detergent bottles or red sharps containers.

Prescription and OTC Medications

As explained by the EPA, trashing or dumping medication down the toilet can contaminate water supplies. Instead, drop off expired or unwanted drugs at one of these two local spots:

- **Town of Easton drug drop off**
- **CVS medication disposal**

Please read each link carefully to confirm accepted items.

Prescription Bottles

Americans have four billion prescriptions written each year, but unfortunately, empty pill containers are not recyclable. A location in Ohio, **Matthew 25: Ministries**, accepts these cleaned, empty, and label-free plastic containers for reuse.

513-793-6256

Annual Town Clean Up

Follow **Keep Easton Beautiful's Facebook page** for updates on their annual town-wide clean up, usually held in April. Adults and children can volunteer to clean up roadsides, parks, and other public spaces.

ADDITIONAL RESOURCES



Additional Resources

Community Gardens

[NRT Community Gardens](#), 508-238-6049

[Wheaton Farm Community Gardens](#), 508-230-0630

Local Fruits & Vegetables and Farmer's Markets

[Langwater Farm](#), thefarmers@langwaterfarm.com

[Simpson Springs Market](#), 508-238-4472

[Flynn's Family Farm](#), 508-238-1600

[CN Smith Farm](#), 508-378-2270

[Ward's Berry Farm](#), 781-784-3600

[Mass Grown Map](#), farms, farmer's markets, and agricultural activities in state

More Ways To Preserve, Protect, and Engage with Natural Resources

[Everyone Can Take Climate Action](#) by mass.gov

[Interactive Map of Easton's Walking Trails](#)

[Easton Garden Club](#)

[Landscaping for Pollinators](#) from UMASS Center for Agriculture

[Choosing Pollinator-Friendly Native Plants In Home Gardening or Landscaping](#)

[More than Just a Yard: Ecological Landscaping Tools for Massachusetts](#)

[Homeowners](#)

[UMASS Center for Agriculture Fact Sheet Page](#): A resource of information on a variety of topics, including practices residents often use, plants, and pests

[Audubon Native Plant finder](#): Help create more bird-friendly habitats with native plants

[Picture This](#): Plant identifier app

[Merlin Bird ID](#): Identify birds seen or heard to help build list of area birds

[iNaturalist](#): Record observations seen outside; findings are shared with scientific data repositories like the Global Biodiversity Information Facility to help scientists find and use submitted data.

I like to envision the whole world as a jigsaw puzzle...if you look at the whole picture, it is overwhelming and terrifying, but if you work on your little part of the jigsaw and know that people all over the world are working on their little bits, that's what will give you hope.

– Dr. Jane Goodall, DBE, Primatologist



**Environmental
Stewardship
Committee**
Easton, Massachusetts



All resources are current as of 2024. Inclusion in this guide does not imply endorsement of any products or services. Requests for inclusion in future updates of this guide can be emailed to Sean Dugan, Asst Town Administrator, at SDugan@easton.ma.us