

VIRTUAL PUBLIC MEETING



5th Avenue: Cherry Street to Grand Avenue
Grand Avenue: 2nd Avenue to 5th Avenue

One-Way to Two-Way Conversion

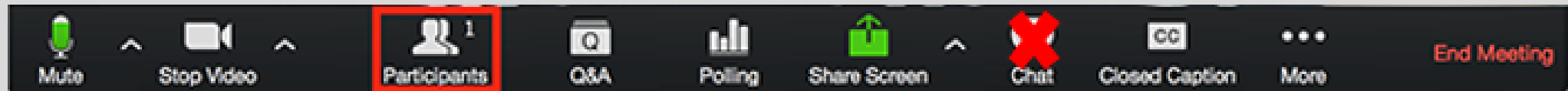
May 5, 2021

Steve Naber, P.E.
City Engineer

Corey Bogenreif, P.E.
Principal Traffic Engineer

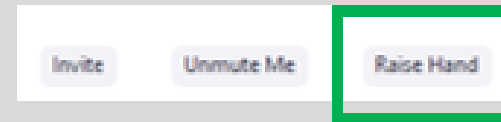
ATTENDEE INSTRUCTIONS

- During the meeting, please "raise your hand" through Zoom computer app if you wish to speak.
- The chat feature is not enabled for this meeting
- Click the **Participants** button, which will open box showing all of the participants.

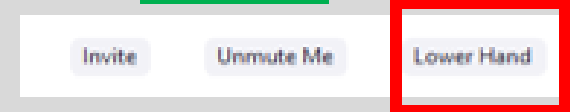



- At the bottom of the Participants box, you should see the following buttons.

- Click on RAISE HAND if you would like to speak.



- If you decide to lower your hand, click on LOWER HAND.



- If you are on a phone, please press *9 (star nine) to raise your hand
- To unmute or mute yourself, just press *6 (star six)
- This meeting will be recorded 

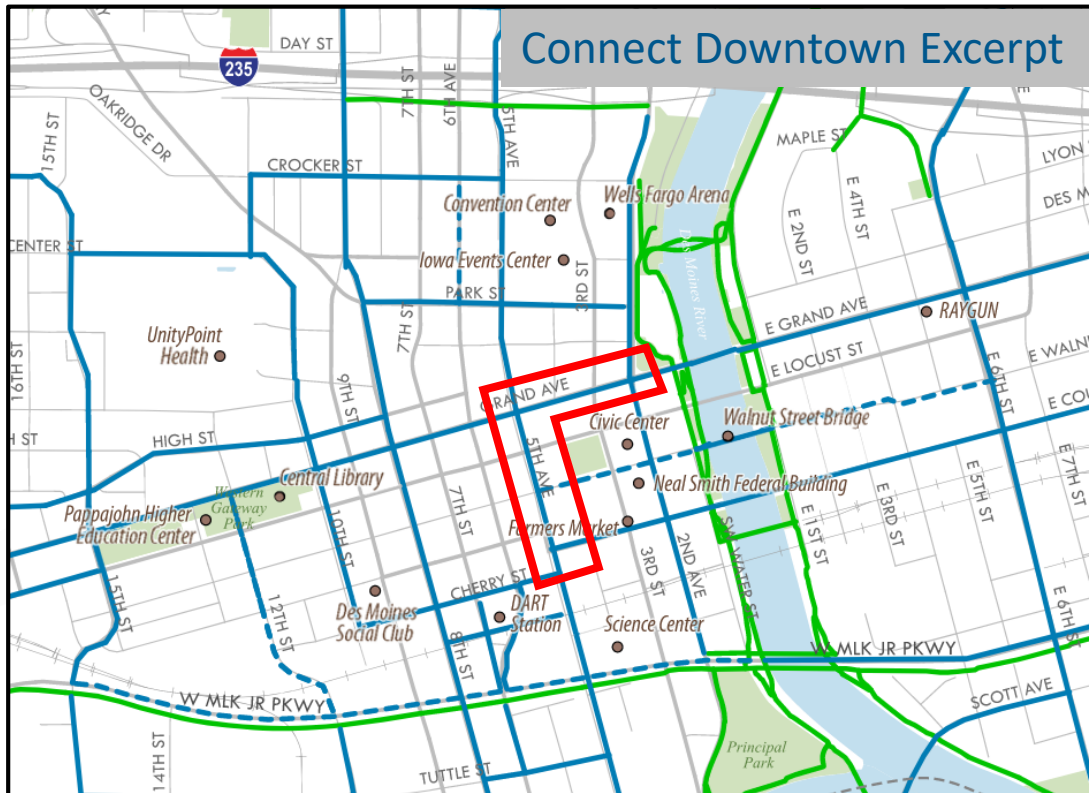
PURPOSE OF VIRTUAL OPEN HOUSE

- Typically, the City has in-person public meetings.
- Due to COVID-19 pandemic such public gatherings or meetings at a physical place are not possible or practicable.
- To reduce the risk of spreading COVID-19 the City has been conducting public meetings via Zoom.
- This is the City's opportunity to present this upcoming project.
- This is the public's opportunity to comment and ask questions about this upcoming project.

PROJECT BACKGROUND / OVERVIEW

5th AVENUE

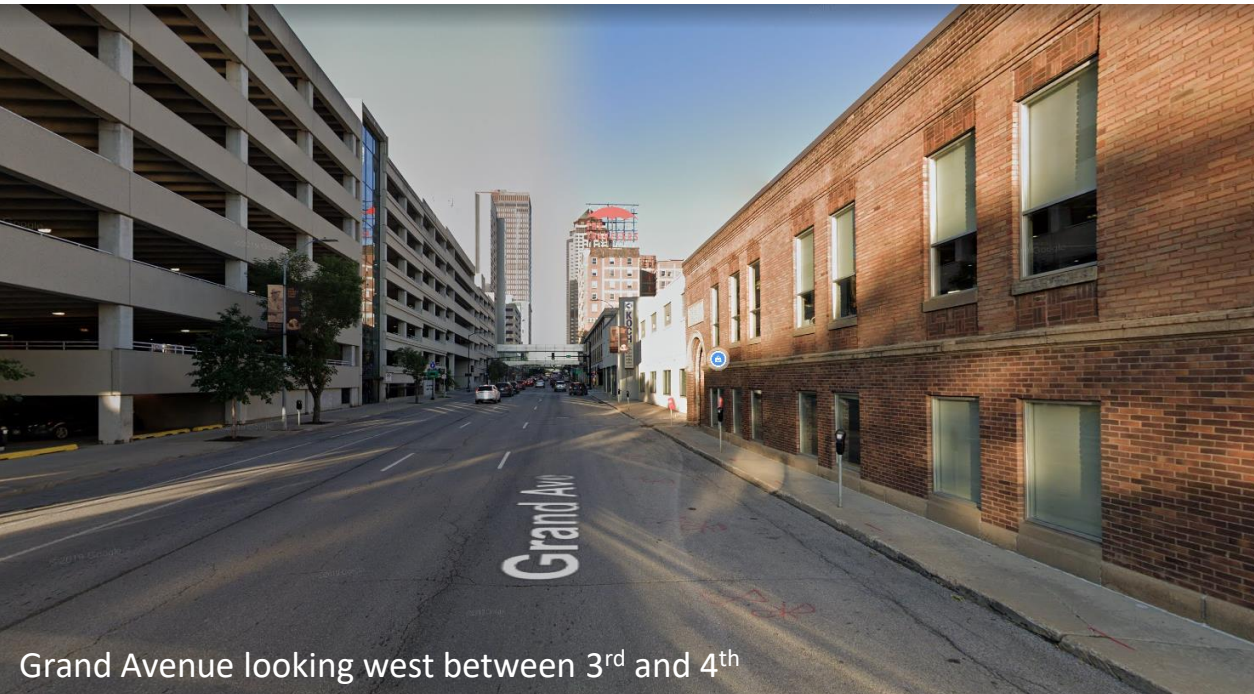
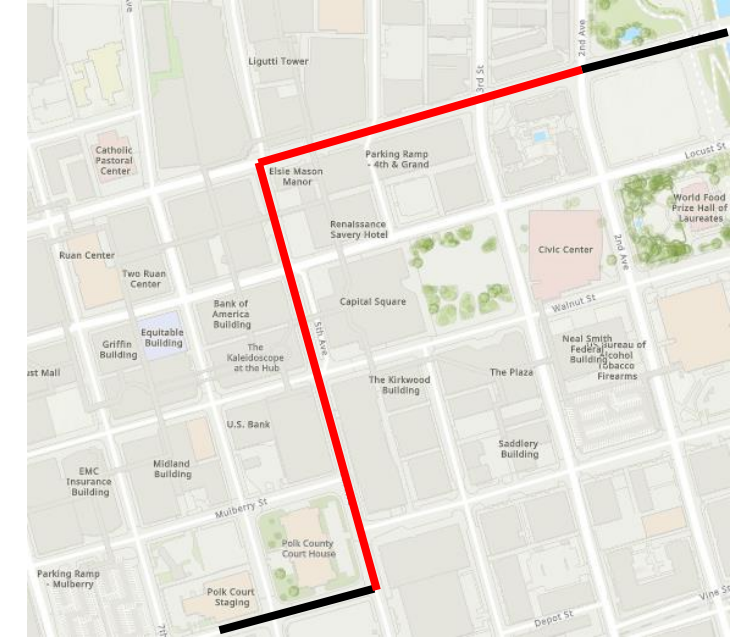
- Project would convert 3 blocks of 5th Avenue from Mulberry to Grand from one-way to two-way.
- This project was identified as a project in the City's Downtown Walkability Study, Connect Downtown completed in 2017



PROJECT BACKGROUND / OVERVIEW

GRAND AVENUE

- The long-range plan is to convert both Grand Avenue and Locust Street from one-way to two-way.
- The City is proposing to convert the two blocks of Grand from 3rd to 5th from one-way to two-way.
- This will provide two-way bicycle connectivity between recently complete bike lane projects on Cherry Street and E Grand
- Opportunity to improve sidewalks along Grand Avenue between 3rd and 4th



Grand Avenue looking west between 3rd and 4th



Grand Avenue looking west between 4th and 5th

5th Avenue – MoveDSM Summary Sheet

Step 1: Modes or Nodes?

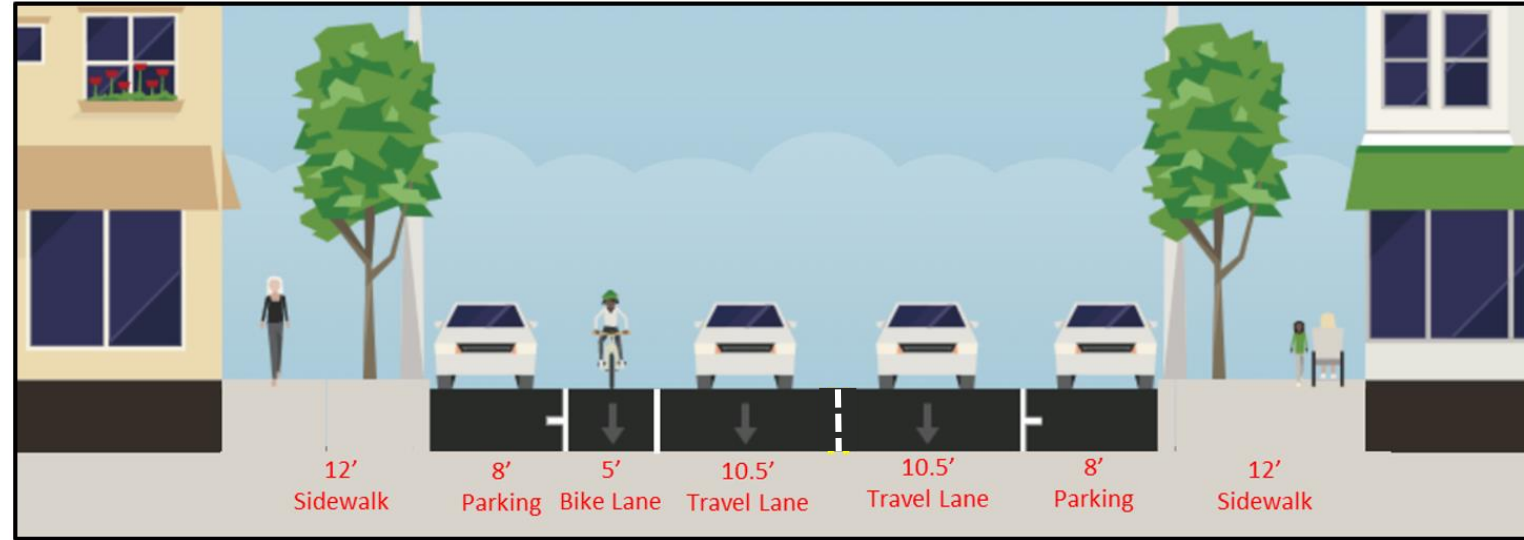
Nodes	✓
Bike	✓
Transit	
Truck	
Emergency Vehicle	

Step 2: Base versus Existing Condition

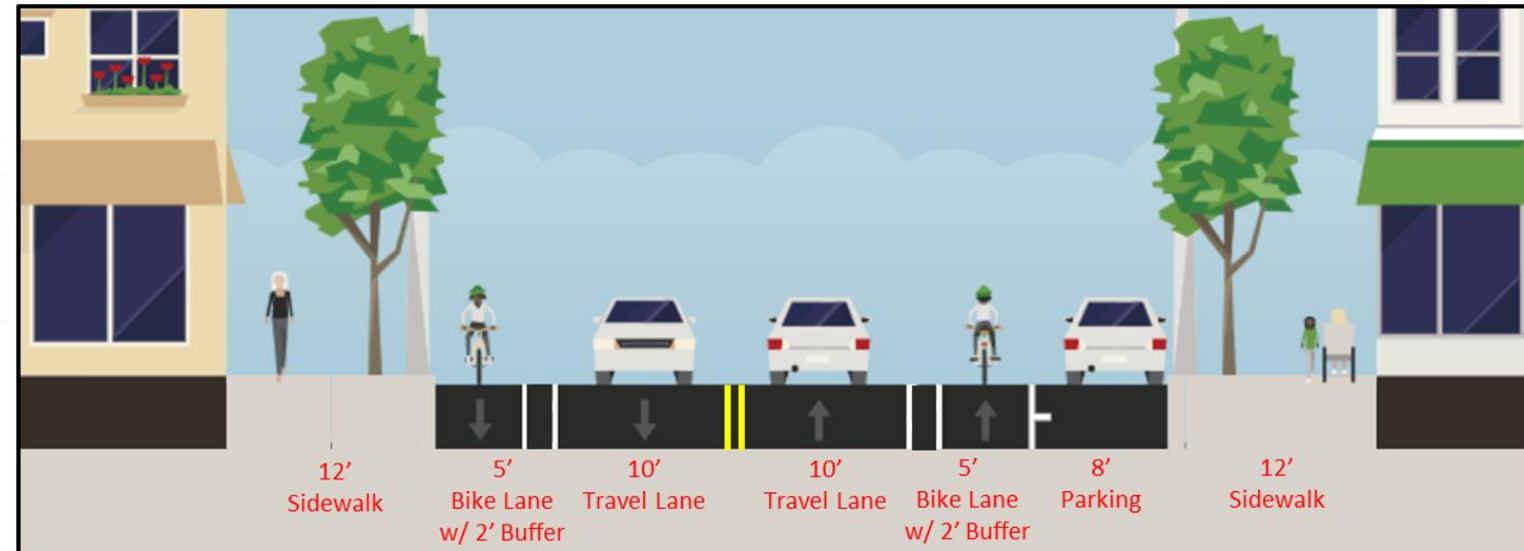
ROW Width	66'
Street Width	42'
Existing Speed Limit	25 mph
Recommended Speed Limit	25 mph
Average Daily Traffic	4,850
Parking	Both Sides

Step 3: Customization

	Proposed	MoveDSM Guidelines
Lane Width	10'	10' or 11'
Sidewalk	6'	N/A
Parkway	6'	N/A
Bike Facilities	Buffered	On-Street
Two-Way Left Turn Lane	N/A	N/A
On- Street Parking	Parallel One-Side	Parallel

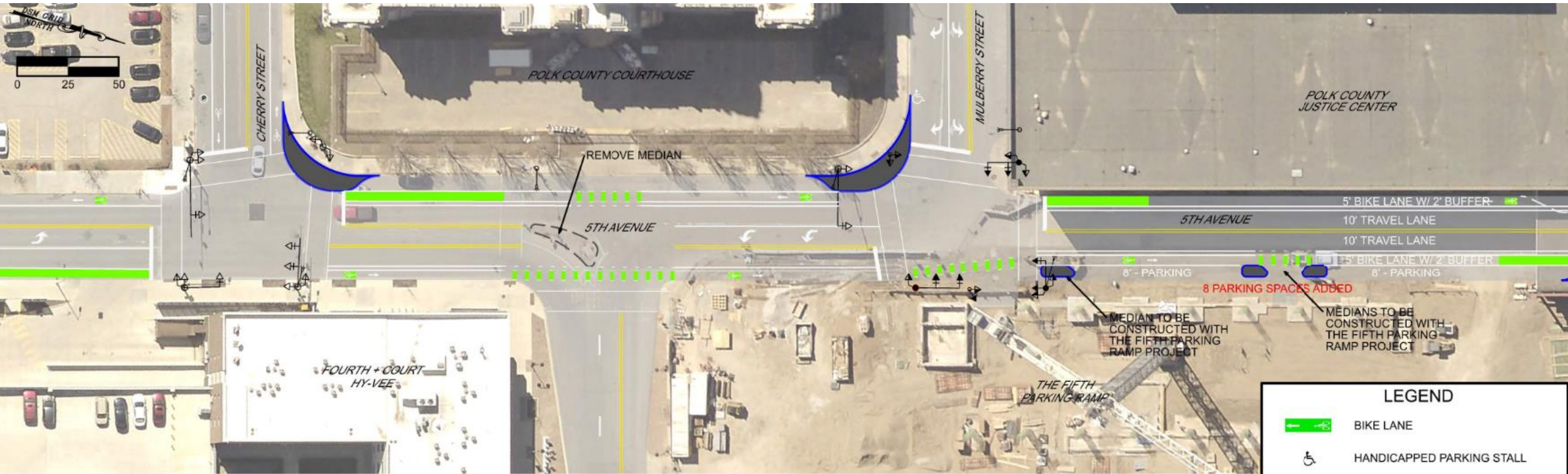


Existing Conditions



Proposed Cross-Section

5TH AVENUE – CHERRY ST TO WALNUT ST

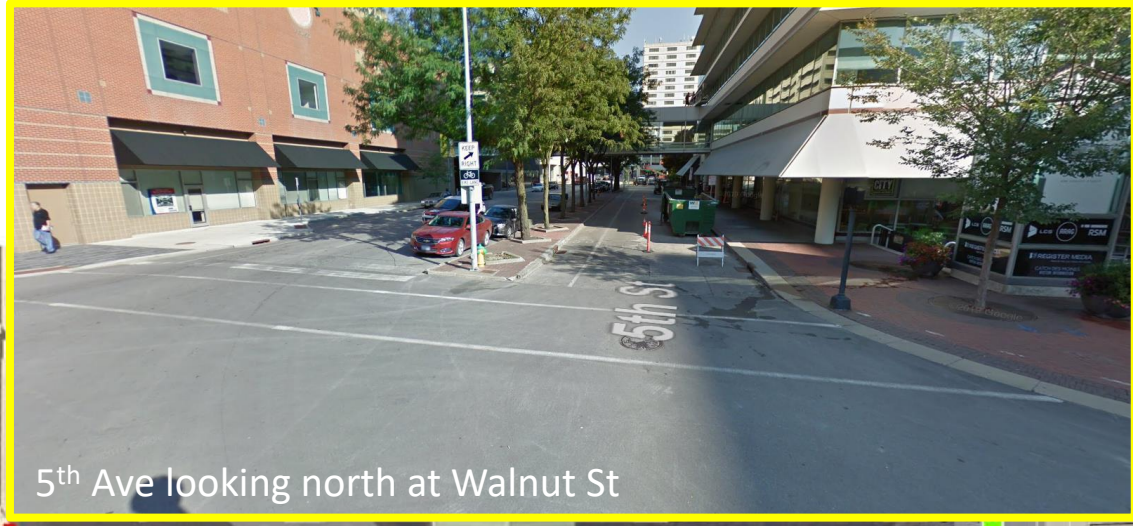


Notable Changes/Improvements

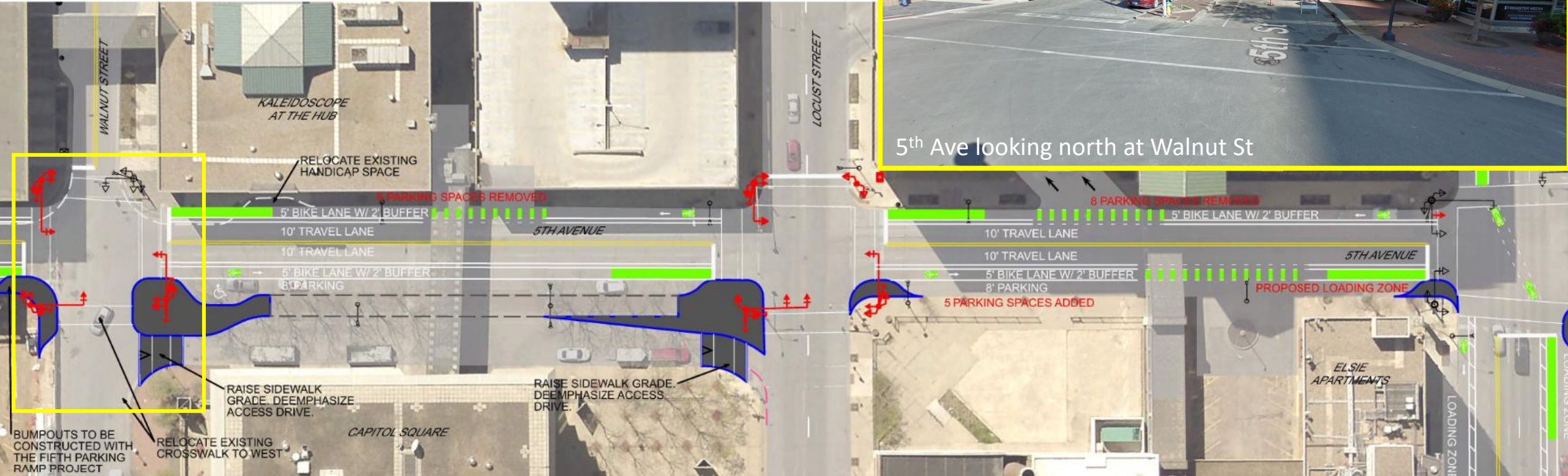
- Two-Way Conversion between Mulberry and Grand
- Green Paint / Bumpouts
- Removal of Median/Uncontrolled Crossing at Court Ave
- Addition of 8 on-street spaces between Mulberry and Walnut

- Net on-street parking changes:
 - No change from Cherry to Mulberry
 - + 8 spaces between Mulberry and Walnut

5TH AVENUE – WALNUT ST TO GRAND AVE



5th Ave looking north at Walnut St



Notable Changes/Improvements

- Two-Way Conversion between Mulberry and Grand
- Green Paint / Bumpouts
- New/Modified Traffic Signals at Walnut and Locust Intersections
- Relocate pedestrian crossing at Walnut and Locust to intersection
- Deemphasize Capitol Square “alley” driveway.
- Added loading zone at Elsie Manor Apartments
- Net on-street parking changes:
 - - 6 spaces between Walnut and Locust
 - - 3 spaces between Locust and Grand

Grand Avenue – MoveDSM Summary Sheet

Step 1: Modes or Nodes?

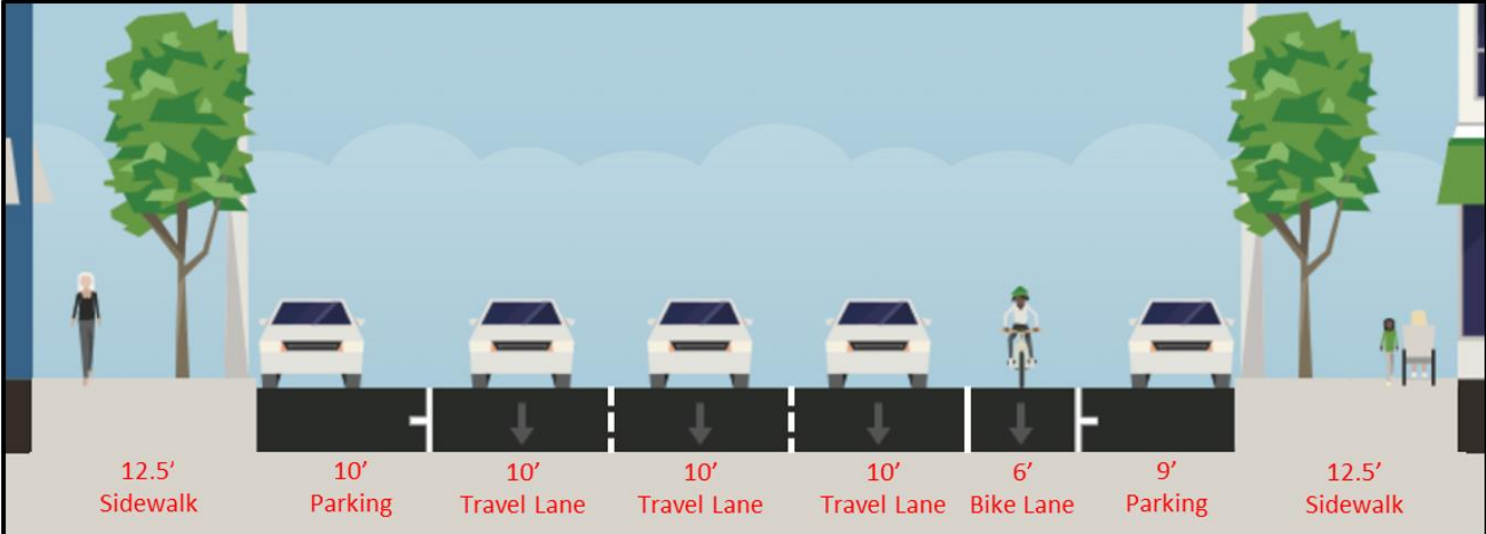
Nodes	✓
Bike	✓
Transit	✓
Truck	✓
Emergency Vehicle	✓

Step 2: Base versus Existing Condition

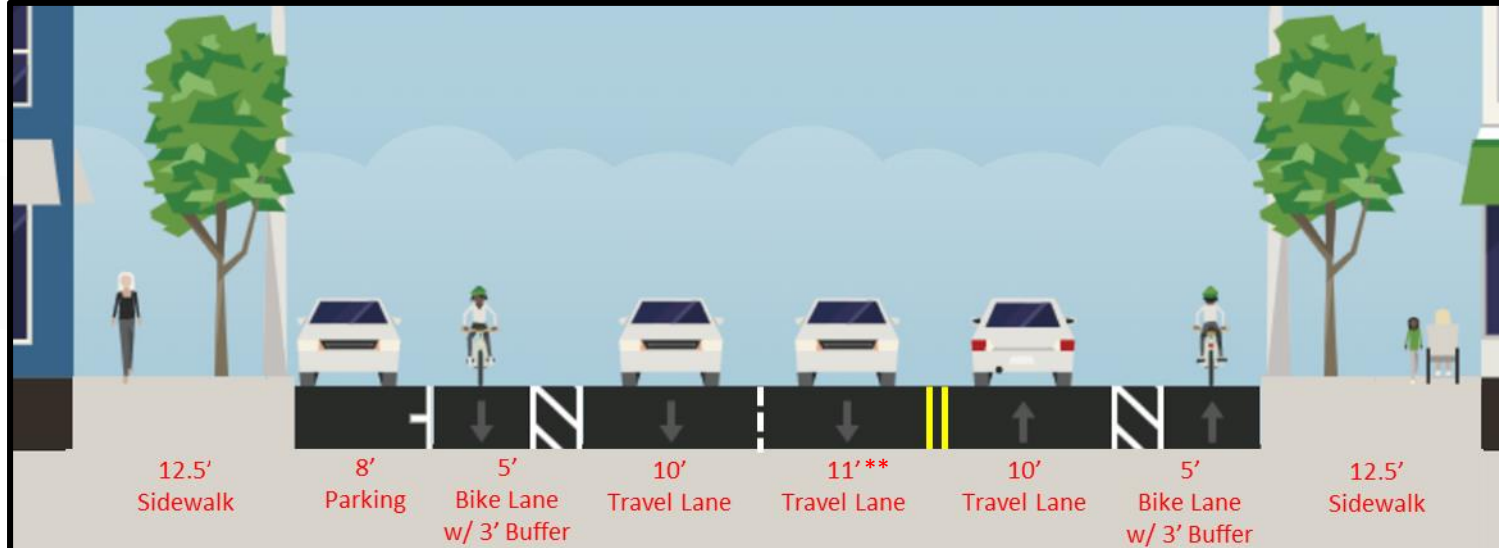
ROW Width	80'
Street Width	55'
Existing Speed Limit	25 mph
Recommended Speed Limit	25 mph
Average Daily Traffic	11,000
Parking	Both Sides

Step 3: Customization

	Proposed	MoveDSM Guidelines
Lane Width	10'	10' or 11'
Sidewalk	6'	N/A
Parkway	6' – 6.5'	N/A
Bike Facilities	Buffered	On-Street
Two-Way Left Turn Lane	N/A	N/A
On- Street Parking	Parallel One-Side	Parallel



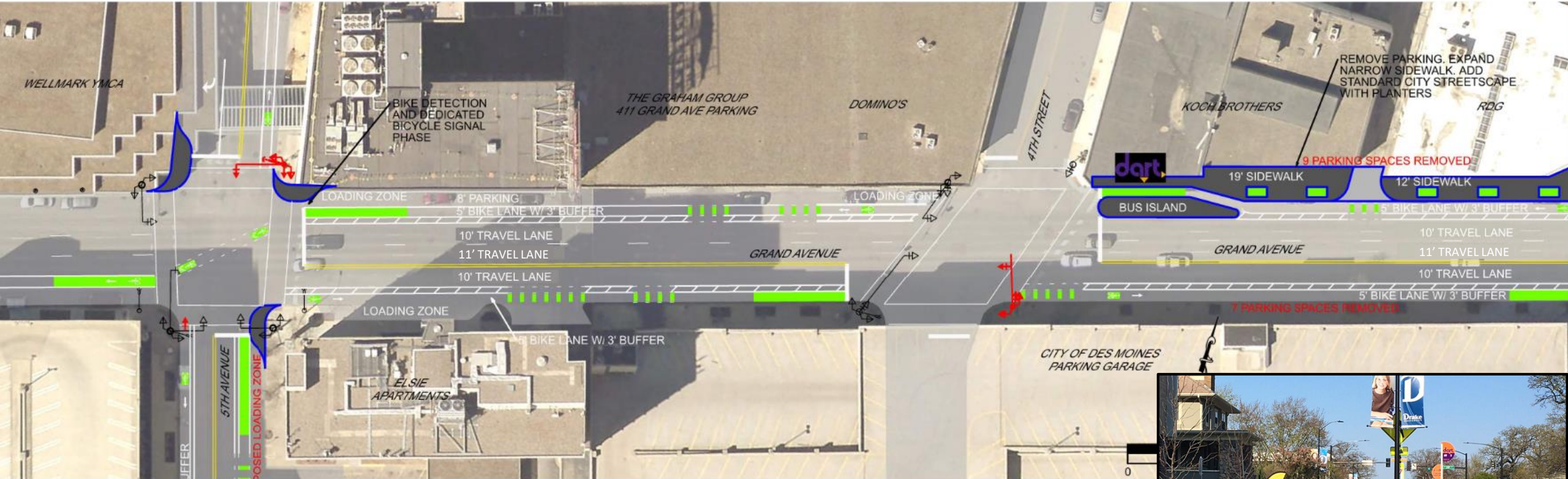
Existing Conditions



Proposed Cross-Section

** Proposed 11' for future condition when this lane becomes two-way left turn lane

GRAND AVENUE – 5th AVE TO 3rd ST



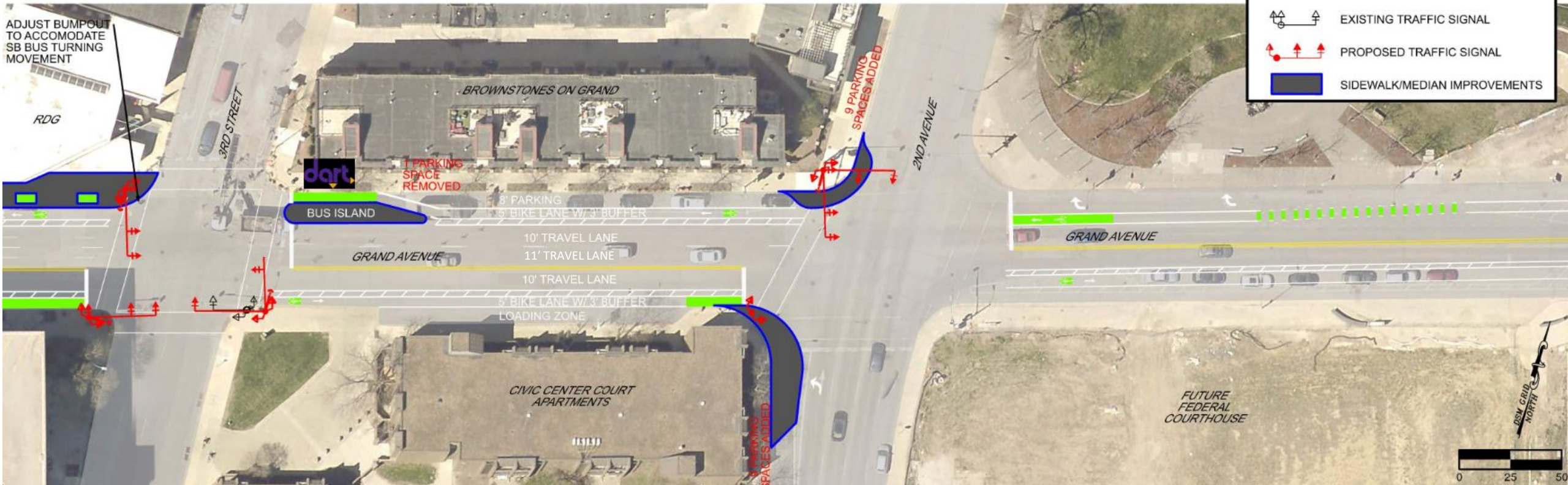
Notable Changes/Improvements

- Two-Way Conversion between 3rd and 5th
- Green Paint / Bumpouts
- Two-Way bike lanes between 2nd and 5th
- Bike scramble phase moved from 3rd to 5th. 5th Ave carries less traffic than 3rd.
- Traffic Signal Modifications at 4th and 5th
- Improved Emergency Access and On-Call DART service at Elsie Manor
- Improved DART bus island at 4th (approximately 140 buses/day on Grand)
- Improved Sidewalk on north side between 3rd and 4th
- Net on-street parking changes:
 - No changes between 4th and 5th
 - - 16 spaces between 3rd and 4th



University Ave and 27th St near Drake

GRAND AVE – 3rd ST TO DM RIVER



LEGEND

- BIKE LANE
- HANDICAPPED PARKING STALL
- EXISTING TRAFFIC SIGNAL
- PROPOSED TRAFFIC SIGNAL
- SIDEWALK/MEDIAN IMPROVEMENTS

Notable Changes/Improvements

- Two-Way Conversion between 3rd and 5th
- Green Paint / Bumpouts
- Two-Way bike lanes between 2nd and 5th
- Bike scramble phase moved from 3rd to 5th
- Traffic Signal Modifications at 2nd and 3rd
- Improved DART bus island at 3rd
- Bumpouts and lane continuity improvements on 2nd Avenue
- Net on-street parking changes:
 - - 1-2 spaces between 2nd and 3rd
 - + 18 spaces on 2nd
 - Net Zero on-street parking changes on project.

PROJECT SCHEDULE / NEXT STEPS

May 5, 2021	Virtual Public Meeting
May 11, 2021	Transportation Safety Committee
May – Nov 2021	Design
Nov 2021	Construction Bid Letting
2022	Construction



QUESTION?

PROJECT WEBPAGE: https://www.dsm.city/departments/engineering_-_division/projects_studies.php

