



---

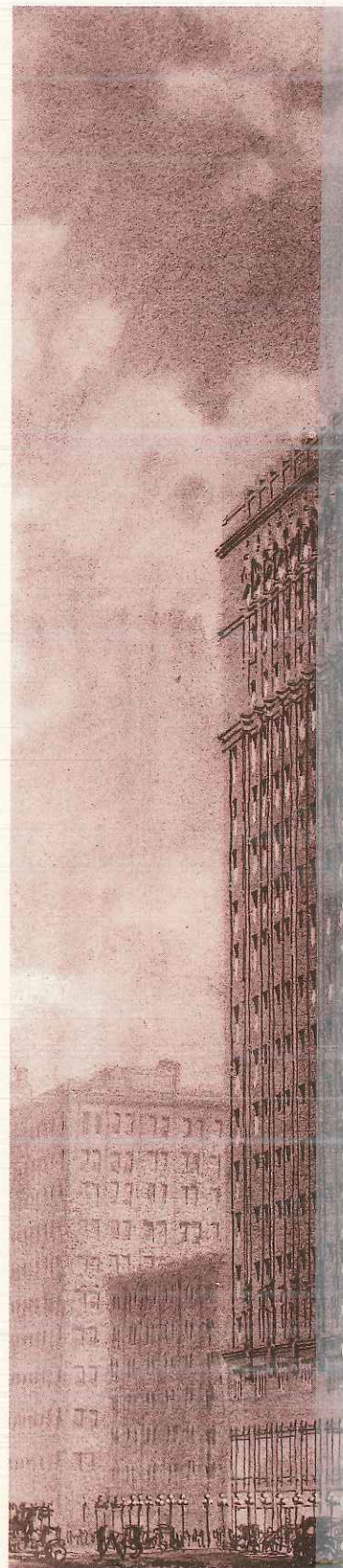
---

## 4 Documenting our successes and losses is important for creating future preservation victories.

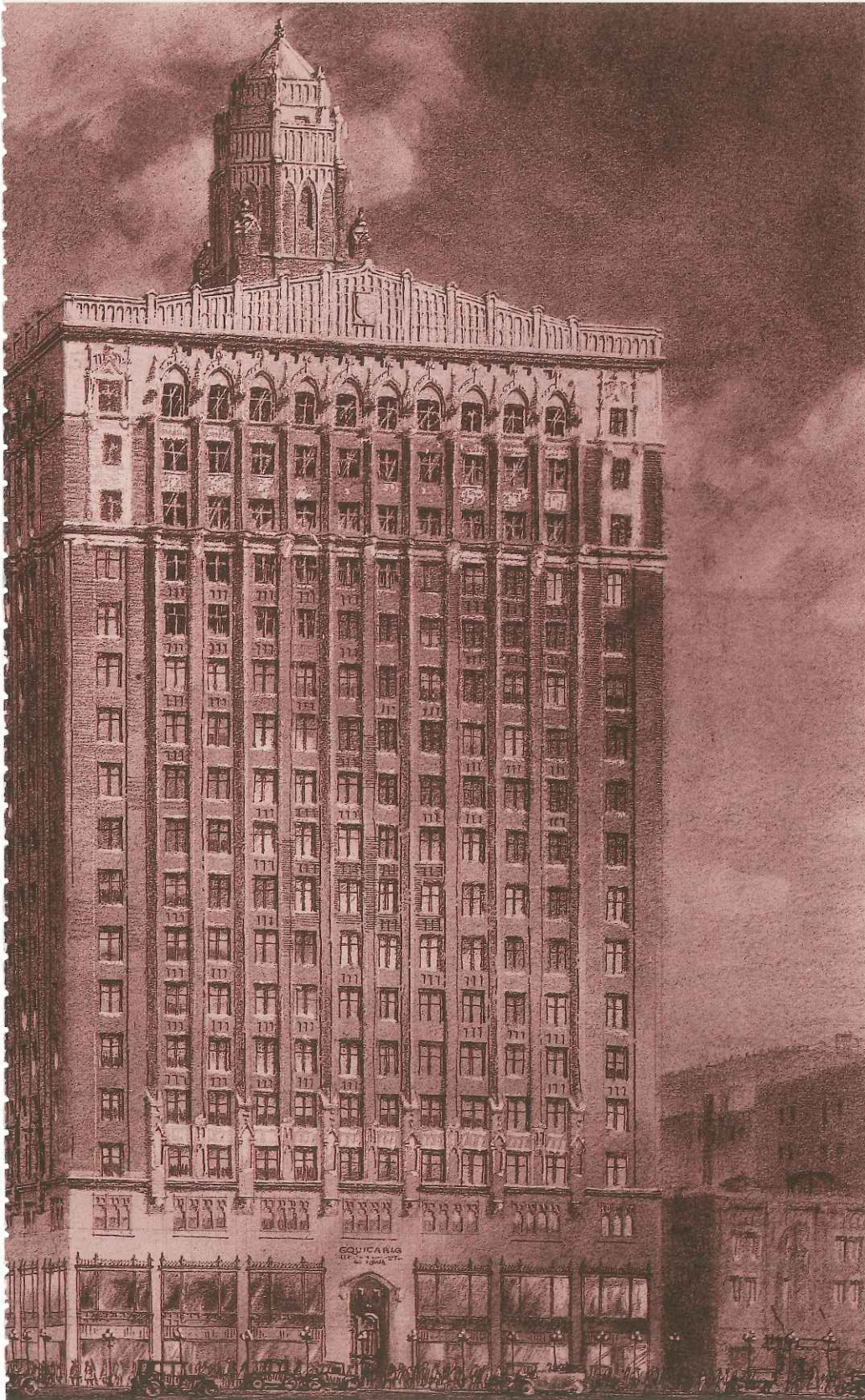
*For the past twenty five years individuals in Des Moines have attempted to protect many of the landmark buildings that defined much of the city's character. Their work has often been thankless and laborious. Some buildings and neighborhoods have been preserved, while other buildings have been demolished. The city owes these individuals, working in coalitions, a great deal of thanks for preserving that portion of our heritage and raising the collective consciousness of the city.*

*Preservationists have worked with policy makers to establish isolated ordinances that protect landmark buildings and two local historic districts. The State Historical Society of Iowa has worked with the city to fund surveys and studies that document much of the city's past and relate it to extant buildings. During the Country's Bicentennial Year, city staff and consultants were able to document and survey a large portion of Des Moines' architectural fabric. This partnership with the State Historical Society of Iowa to promote study of contexts and neighborhoods has continued.*

*The Equitable Building, 1923,  
Proudfoot, Bird and Rawson, architects*



# History of Preservation in Des Moines



## CHRONOLOGY OF IMPORTANT EVENTS IN PRESERVATION

**1966**

National Historic  
Preservation Act

**1968**

Old Federal Building  
demolished (site of Penny's  
Parking Garage) – first outcry  
in Des Moines for preservation  
of a public building

**1976**

United States of America  
Bicentennial

Architectural Survey of  
Structures, *Des Moines*  
*Heritage Phase I* completed\*

Landmarks Ordinance approved

**1977**

Sherman Hill Association formed

Main Library listed on National  
Register of Historic Places and  
restoration project begun

Iowa-Des Moines National  
Bank restored and listed in  
National Register (Firststar  
Bank at 520 Walnut)

Architectural Survey of  
Districts *Des Moines Heritage*  
*Phase II* completed\*

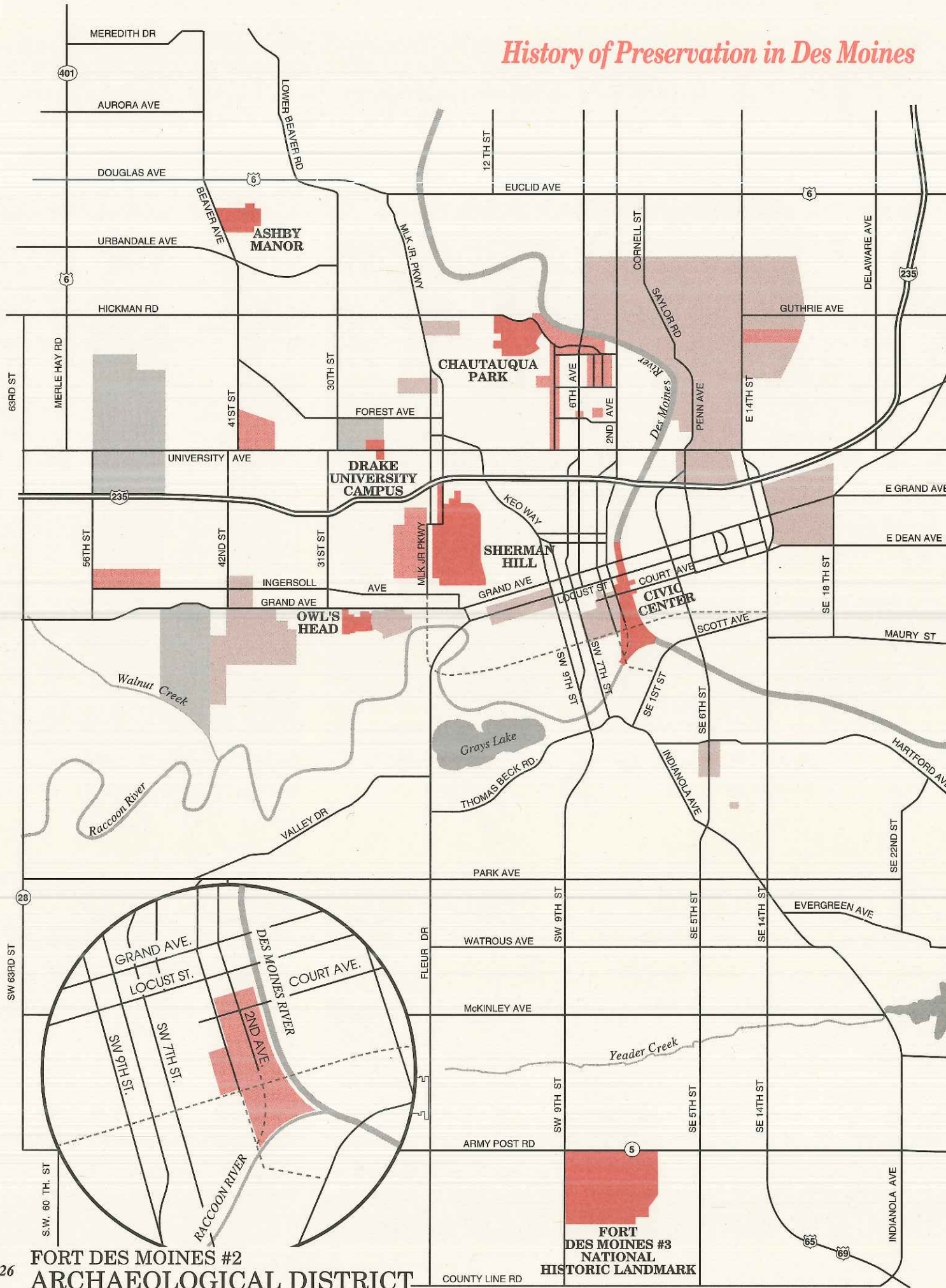
**1978**

*Des Moines: Capital City*  
Orin Dahl, published

Owl's Head listed in National  
Register of Historic Places

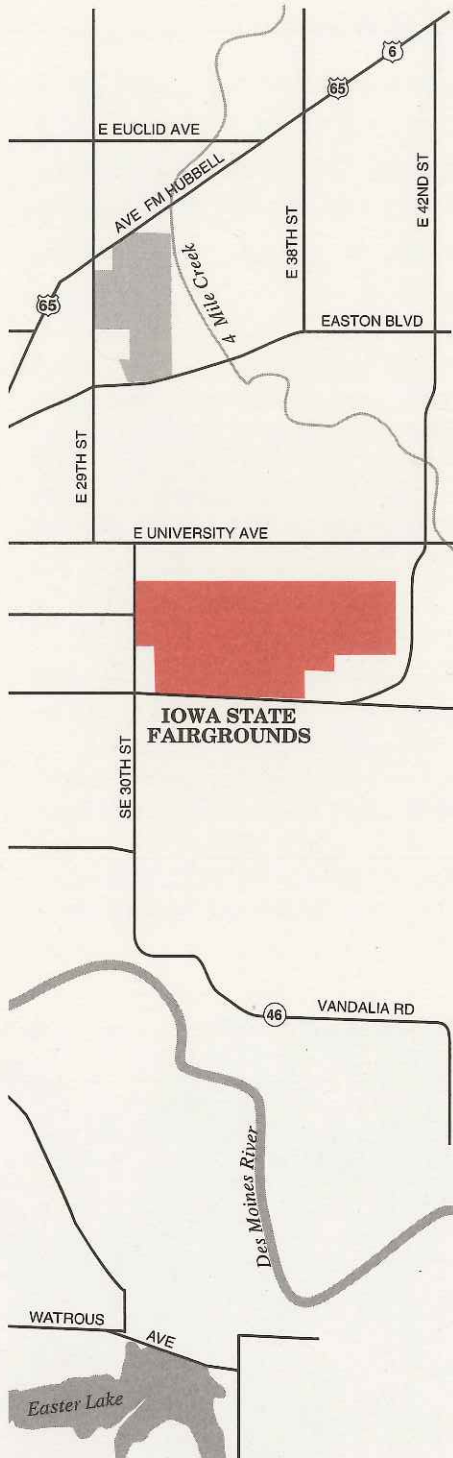
(continued)

# History of Preservation in Des Moines



# Districts of Architectural or Historical Significance

DES MOINES CITY-WIDE MAP, 1992



**OWL'S HEAD DISTRICT**, containing approximately 50 houses, was built between 1905 and 1915 in response to the extension of street railway lines westward from the city center and became an elegant "streetcar suburb." The houses, despite variation in architectural influences, have much in common: 2 stories, prominent gables and dormers on massive roof forms, material combinations of clapboard, wood shingle, brick and stucco. The large single family homes are well set back from the street on large lots, sheltered by large trees, hedges and shrubbery which gives the district a secluded atmosphere.

**SHERMAN HILL DISTRICT** is one of Des Moines' oldest, centrally located residential "suburbs" and contains approximately 250 structures. The residences of Sherman Hill, with the exception of mid-20th century apartment complexes, date almost exclusively from the late Victorian and early Craftsman period (1880 to 1920). They present many variations on two basic forms; the single-family residence (usually frame) and the multi-family brick block. The apartment buildings were built after the turn of the century as apartment living came into vogue.

**CHAUTAUQUA PARK DISTRICT**, containing approximately 100 houses, is a clearly defined residential area in north Des Moines, just south of a bend in the Des Moines River. The neighborhood was attractively laid out in the 1920s by a local landscape architect in order to take advantage of the topography. The heavily wooded hillside location, curving streets, and lack of sidewalks contribute to the character of this neighborhood. The district was nominated to the National Register under the Multiple Property submission, "*Suburban Developments in Des Moines Between the World Wars.*" The large concentration of 1½ story brick homes of a tudor revival style built between 1923 to 1941 enjoy a variety of lots shapes and sizes since the layout respects the curving topography of the site.

**ASHBY MANOR DISTRICT**, containing approximately 100 houses, is a clearly defined neighborhood in northwest Des Moines. Nominated to the National Register under the Multiple Property submission "*Suburban Developments in Des Moines Between the World Wars,*" the district developed as the automobile allowed residents to live farther from the downtown. The street layout and tree canopy are a distinctive break from the grid pattern of surrounding streets. The district retains a quiet, peaceful attitude attributable in part to the fact that none of the streets are thoroughfares and Ovid and Ashby Avenues dead-end at Ashby Park. The brick homes in this area, locally termed "Beaverdale Brick," give a unifying effect to the street.

**DRAKE UNIVERSITY CAMPUS DISTRICT**, consisting of six semi-public buildings constructed between 1903 and 1908, anchors the southeast part of the school's parklike campus. These five collegiate and one religious buildings are united by historic context and location. They relate to Drake University's early development, its relationship to the First Christian Church and their role in the development of the area. Construction the Old Main building (1882-1883) represents the initial pioneer period of Drake's development.

**CIVIC CENTER DISTRICT** is the most prominent representation in the city of the turn-of-the-century planning principles associated with the City Beautiful movement. The present district consists of six public buildings, eight bridges, 11,716 linear feet of river walls, two small dams, Riverside Drive, and West River Front Park and East River Front Park. Dates of construction range from 1900 to 1938. Buildings and structures are distinguished by their river front location and by their harmonious design, style, scale, civic use, siting and materials.

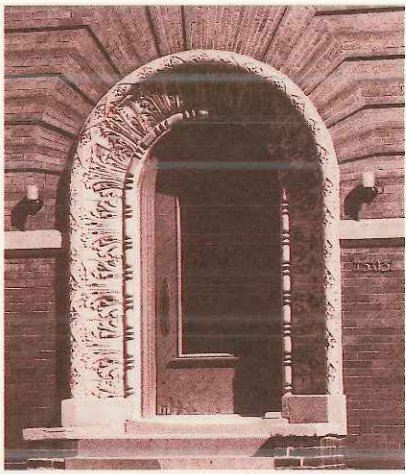
**IOWA STATE FAIR AND EXPOSITION GROUNDS DISTRICT** represents the culmination of a century of design effort on the part of the Iowa State Fair Board and other historical figures. Purchased in 1885, the Iowa State Fairgrounds retains a fine collection of late nineteenth and twentieth century fair and exposition type buildings and the original land-use pattern. The fairgrounds are a major East Side landmark along University Avenue.

- DISTRICTS LISTED IN THE NATIONAL REGISTER
- DISTRICTS FOUND ELIGIBLE FOR NATIONAL REGISTER  
Page 32 for description
- AREAS WITH POTENTIAL FOR NATIONAL REGISTER PROPERTIES OR DISTRICTS  
Page 33 for description

## CHRONOLOGY OF IMPORTANT EVENTS IN PRESERVATION

1979

Sherman Hill listed in National Register of Historic Places



Sherman Hill apartment doorway

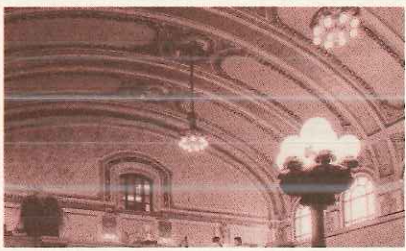
1980

Old Bankers Trust Building demolished (site of Ruan II, 666 Grand Avenue) – first outcry in Des Moines for preservation of a private building



Bankers Trust Building

Restoration of Grand Hall in City Hall initiated

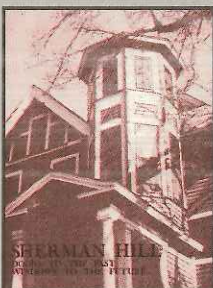


City Hall interior

1981

Sherman Hill Plan, *Doors to Past, Windows to the Future* completed

Historic District Ordinance approved



## National Register Properties and Districts (As of June, 1993)

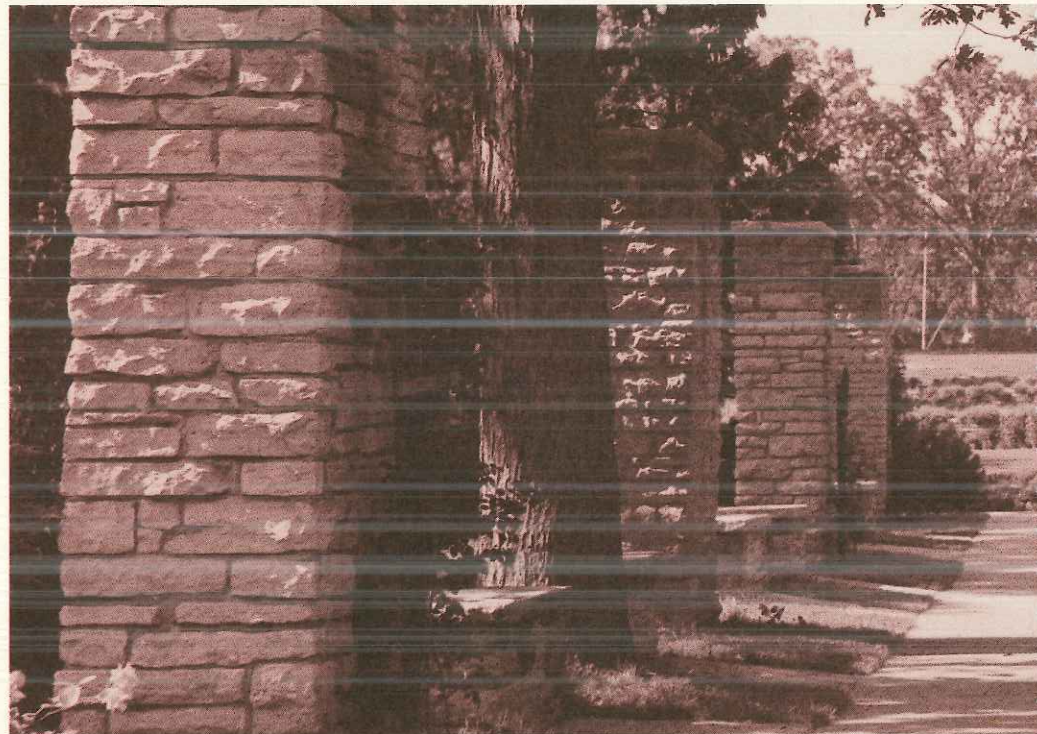
*The City of Des Moines has a significant number of individual properties and districts listed in the National Register of Historic Places. The National Register is the nation's official list of cultural resources worthy of preservation. Authorized by the National Preservation Act of 1966, the listing acknowledges the value and integrity of the*

### NATIONAL HISTORIC LANDMARKS (NHLs)

NHLs are associated with events that are significant to the nation as a whole and must be of exceptional quality as it relates to architectural style or events associated with the property or site. Because of the level of integrity and quality, they are more rare than properties listed on the National Register of Historic Places. An NHL is provided more direct protection and monitoring from the Department of the Interior, National Park Service.

**Fort Des Moines Provisional Officers Training School**—south of Army Post Road at SW 9th Street (portion outside city limits)

The Fort Des Moines Provisional Officer Training School, established in 1917, was the site of the first commissioned officers' training program for blacks in the United States. It was the first recognition by the U.S. government of a responsibility for training black officers and the establishment of a military tradition among blacks. From this post, 639 black officers were commissioned to lead the 92nd Division, an all black unit, which served meritoriously during World War I. During World War II, Fort Des Moines became the first training center for the Women's Auxiliary Army Corps and performed the majority of the Corps' training mission during the war.



The Greenwood Park Rose Garden, a local landmark

## History of Preservation in Des Moines

property's contribution to the history and architectural heritage of the city, community, state or nation. The listing is mainly prestigious but does allow the property to be eligible for some federal tax incentives for rehabilitation and consideration in planning for federally assisted projects. There are no mandatory requirements for review with any privately funded project on a National Register Property.

### DISTRICTS LISTED IN THE NATIONAL REGISTER OF HISTORIC PLACES

A historic district listed in the National Register is a contiguous group of properties that can be distinguished from surrounding properties. A district derives its importance from being a unified entity even though it is often composed of a wide variety of resources.

**Owl's Head**—28th and 29th Streets, south of Grand Avenue

**Sherman Hill**—15th to 19th Streets, Woodland Avenue to Freeway

**Civic Center**—Downtown Riverfront

(See *The City Beautiful Movement and City Planning in Des Moines, Iowa 1892-1938*)

**Drake University**—Old Main, Howard Hall, Cole Hall, Campus District Memorial Hall, Carnegie Library, University Christian Church  
(See *Drake University and Related Properties in Des Moines, Ia, 1881-1918*)

**Iowa State Fair Grounds**—E. 30th and University Avenue

**Chautauqua Park**—Chautauqua Parkway, South of Hickman Road  
(See *Suburban Developments in Des Moines Between the World Wars, 1918-1941*)

**Ashby Manor**—Ashby and Ovid Avenues, 40th Street Place and Wallace Lane, East of Beaver Avenue

(See *Suburban Developments in Des Moines Between the World Wars, 1918-1941*)

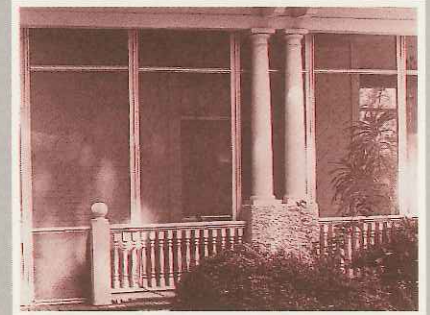


1982

Sherman Hill becomes Local Historic District

1983

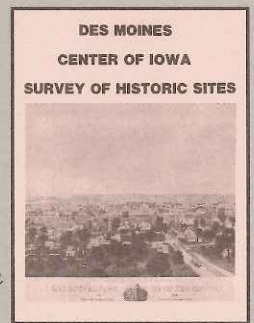
Owl's Head becomes Local Historic District



Residential porch in Owl's Head

Court Avenue Historic Area Study completed

*Des Moines, A Survey of Historic Sites* by Barbara Beving Long completed\*



1984

*Rehabilitation and New Construction Guidelines for Des Moines Historic Districts* published\*

Homestead Building restored



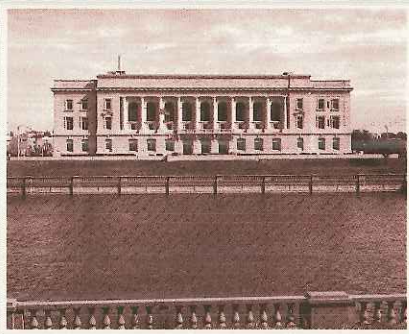
Homestead Building, 1893, Smith and Gutterson Restoration by Bussard Dikis

(continued)

## CHRONOLOGY OF IMPORTANT EVENTS IN PRESERVATION

1986

City of Des Moines designated  
a Certified Local Government



*Des Moines City Hall*

### Certified Local Government Designation

In 1986, the City entered into a partnership (the CLG agreement) in which three levels of government—local, state and federal—agree to follow the same standards and guidelines in all historic preservation activities. In the CLG agreement, the City commits itself to enforce all appropriate state and local ordinances for designating and protecting historic properties; to maintain a historic preservation review commission of preservation proponents and to maintain a system for the survey and inventory of historic and pre-historic properties. It reviews all nominations to the National Register of Historic Places of property within its jurisdiction and must provide for adequate public participation in the local preservation programs.

As a Certified Local Government, Des Moines is eligible to apply for federal grant funds through the State Historical Society of Iowa to help with these activities and has received several grants since it became a CLG.

## STRUCTURES/BUILDINGS/OBJECTS LISTED ON THE NATIONAL REGISTER OF HISTORIC PLACES

**Burns United Methodist Church**—811 Crocker Street  
**Caldwell-Brien-Robbins Funeral Home**—2100 University Avenue  
**Crawford Mansion**—2203 Grand Avenue  
**Cummins (Albert Baird) Residence**—2404 Forest Drive  
**Drake University and Related Properties:**  
    **Vail/Kinney House**—1318 27th Street  
    **Josiah Andrews House**—1128 27th Street  
    **Simmons House**—1113 27th Street  
    **Odenweller/Morey House**—1115 27th Street  
    **Lord Wilcox House**—2416 Kingman Boulevard  
    **Sherman House**—1052 26th Street  
    **Hill Bell House**—1091 26th Street  
    **Knotts House**—1021 26th Street  
    **Scott House**—1014 26th Street  
    **Reynolds House**—1022 26th Street  
    **Denny House**—1084 25th Street  
    **Stuart House**—1060 25th Street  
    **Kirkham House**—1026 24th Street  
    **The Norman Apartment**—3103 University Avenue  
**Ding Darling Studio**—2320 Terrace Drive  
**Fire Station No. 4**—1041 8th Street  
**First Methodist Church**—10th and Pleasant Streets  
**Fort Des Moines Hotel**—10th and Walnut Streets  
**Gabrial, (Rees) House**—1701 Pennsylvania Avenue  
**Grand View College (Old Main)**—1200 Grandview Avenue  
**Hawkeye Insurance Company Building**—209 4th Street  
**Herndon Hall**—2000 Grand Avenue  
**Homestead Building**—303 Locust Street  
**Hoyt Sherman Place**—1501 Woodland Avenue  
**Iowa-Des Moines National Bank Building**—520 Walnut Street  
**Iowa State Capitol**—E. 12th and Grand Avenue  
**Fish and Game Pavilion and Aquarium, Iowa State Fairgrounds**—  
    E. 30th and Grand Avenue  
**Iowa State Historical Building**—E. 12th and Grand Avenue  
**Keeler House (Rev. R.W. and Fannie)**—1430 10th Street  
**Kurtz Warehouse (Warfield Pratt)**—100 Court Avenue  
**Laenard Case House (Rose Hill)**—3111 Easton Boulevard  
**Lexington Apartments**—1721 Pleasant Street  
**Mahnke House**—2707 High Street  
**Maish House**—1623 Center Street  
**Municipal Building (City Hall)**—E. 1st and Locust Streets  
**Northwestern Hotel**—321 E. Walnut Street  
**Naylor House**—944 9th Street  
**Old Southeast Water Trough**—SE 11th and Scott Streets  
**Peak (George P.) House**—1080 22nd Street  
**Polk County Courthouse**—6th Avenue and Mulberry Street  
**Public Library of Des Moines**—100 Locust Street  
**Ralph Rollins House**—2801 Fleur Drive  
**Rumley Building**—104 SW 4th Street

## History of Preservation in Des Moines

**St. Ambrose Cathedral and Rectory**—607 High Street  
**St. John's Basilica**—1915 University Avenue  
**Saddlery Building**—307 Court Avenue  
**Salisbury House**—4025 Tonawanda Drive  
**Scottish Rite Consistory Building**—6th Avenue and Park Street  
**Stevenson House**—2940 Cottage Grove Avenue  
**Stoner, T.I. House**—1030 56th Street  
**Studio Building**—524 E. Grand Avenue  
**Sylvan Theater**—Greenwood Park  
**Terrace Hill**—2300 Grand Avenue  
**U. S. Post Office (Polk County Annex)**—2nd Avenue and Walnut Street  
**Wallace House, Henry**—756 16th Street  
**West Chester**—3520 Grand Avenue

### MULTIPLE PROPERTY DOCUMENTATION FORMS ACCEPTED TO NATIONAL REGISTER

Multiple property listing is a mechanism to register a number of properties linked by a common property type or historic context. A historic context is a body of information about historic properties organized by theme, place and time. For example, the Multiple Properties Document, "*Drake University and Related Properties*," outlines the contexts, themes and property types important to the development of Drake University. Under this document, one historic district and fourteen buildings were found eligible and listed in the National Register of Historic Places. More properties could be added in the future.

- *Drake University and Related Properties in Des Moines, Iowa 1881-1918*
- *Suburban Developments in Des Moines Between the World Wars 1918-1941*
- *The City Beautiful Movement and City Planning in Des Moines, Iowa 1892-1938*
- *Architectural Legacy of Proudfoot and Bird*

### LOCAL HISTORIC DISTRICTS

**Sherman Hill Historic District**—15th to 20th Streets, Woodland Avenue to Freeway  
**Owl's Head Historic District**—28th and 29th Streets, south of Grand Avenue

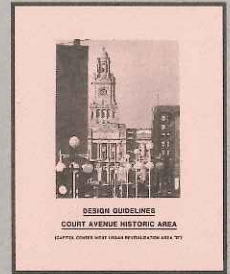
### LOCAL LANDMARKS

The City's Landmark Ordinance provides protection and recognition to properties that are locally significant. The ordinance requires design review before the Historic District Commission on all exterior alterations.

**The Lexington Apartments**—1721 Pleasant Street  
**The Gold Star Monument**—Lutheran Hospital Grounds  
**Woodland Cemetery**—(excluding Jewish Emanuel Cemetery) Corner of Woodland Avenue and Martin Luther King Jr. Parkway  
**Drake University Municipal Observatory**—Waveland Park  
**Old Southeast Water Trough**—SE 11th and Scott Streets  
**Colonial Bread Sign**—Second and University Avenues  
**Butler Mansion**—2633 Fleur Drive  
**Glendale Mausoleum**—Glendale Cemetery  
**Charles H. Martin House**—3939 Grand Avenue  
**Rose Garden**—Greenwood Park  
**Sylvan Theater**—Greenwood Park  
**Wallace House**—756 16th Street  
**American Federal Building**—601 Grand Avenue

1987

*Court Avenue Design Guidelines* adopted by City Council



*The City Beautiful Movement and City Planning in Des Moines, 1892-1938* completed\*

Des Moines Civic Center (Downtown Riverfront) listed in the National Register of Historic Places\*

City Council denies demolition of Garver House (621 16th St.)

1988

*Drake University and Related Properties in Des Moines, Ia 1881-1918*, Multiple Properties Document completed\*

Drake University Campus District listed in the National Register of Historic Places\*



*Carnegie Library, Drake University*

*Flag on the Prairie, History of Des Moines and Polk County* by Barbara Beving Long

1989

*Saga of the Des Moines River Greenbelt* by Harriet Heusinkveld

*Suburban Development between the World Wars*, Multiple properties document\*

(continued)

## CHRONOLOGY OF IMPORTANT EVENTS IN PRESERVATION

### 1990

Chautauqua Park  
Neighborhood listed in the  
National Register of Historic  
Places

*Sherman Hill Master Plan  
Update* by Dunbar-Jones  
Partnership\*

Architectural  
Guide  
*Des Moines  
Architecture  
at Hand*

published by Des Moines  
Architects Council

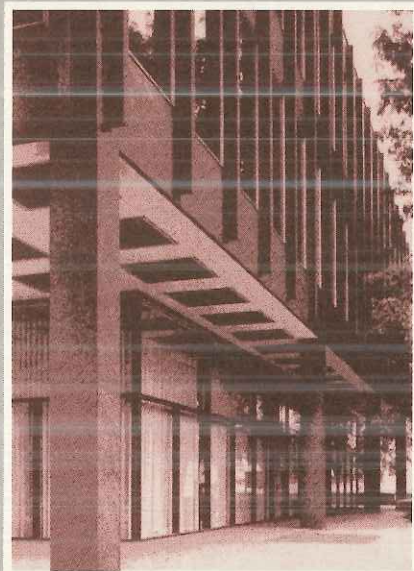
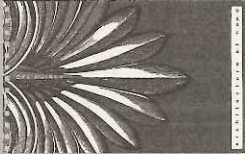
Historic District Commission  
establishes preservation  
awards

### 1992

Ashby Manor listed in the  
National Register of Historic  
Places\*

Cattell Elementary School  
demolished - postponed 13  
years by neighborhood  
(3101 E. 12th Street)

City Council declares  
American Federal Building a  
city landmark



American Federal Building, 1962, Ludwig Mies  
Van der Rohe

## DISTRICTS FOUND ELIGIBLE FOR THE NATIONAL REGISTER OF HISTORIC PLACES

(As of June, 1993)

The following areas have been found eligible for the National Register in a study sponsored by the City of Des Moines or other entity. The areas may be eligible because of their architectural unity or from the historic contexts developed in the multiple properties document. This list is by no means complete. As additional studies are done within the City of Des Moines we expect to find additional areas that are eligible for the National Register.

## DETERMINED ELIGIBLE IN TOWARDS A GREATER DES MOINES - EARLY SUBURBANIZATION AND DEVELOPMENT CIRCA 1880-CIRCA 1920,

by W.C. Page, and J. Walroth, 1993

**Prospect Park 2nd Plat**—Des Moines River to Franklin Avenue, 9th Street to 6th Avenue

**West 9th Street Corridor**—9th Street, Hickman Road to University Avenue

NATIONAL REGISTER DISTRICTS TO BE LISTED BY SPRING, 1996:

**Bates Park District**—4th Street, Oakland Avenue to Clark Street – composed of fourteen houses and the Park itself, illustrates a middle-class real estate development marketed and erected with a private park to increase the value of lots. The houses have a moderate size and level of architectural detail within two major styles, the American Four Square and Colonial Revival.

**Forest Avenue Commercial**—Intersection of 6th Avenue and Forest Avenue – contains a small collection of brick commercial buildings with a variety and sophistication that calls attention to the evolution of secondary commercial nodes in Nineteenth Century Des Moines.

**The Oaklands**—Oakland and Arlington Avenues, Franklin to College Avenues

**Riverview Park Plat**—Des Moines River to Franklin Avenue, eastern lot line of Lot &, Riverview Park Plat, to 6th Avenue

With numerous architect designed houses, the Oaklands and Riverview Park Plat Districts call attention to quality upper and middle class suburban real estate developments. Situated on some of the city's choicest nineteenth century locations, the adjoining districts featured broad streets and large sized lots as well as a nearby street car line.

## DETERMINED ELIGIBLE IN SUBURBAN DEVELOPMENTS IN DES MOINES BETWEEN THE WORLD WARS, 1918-1941

by Barbara Beving Long

**Forestdale Plat**—Germania and Maquoketa Drives

**Hauge's Birchwood Place**—Thompson Avenue, E. 14th to Glenbrook Drive

**Oak Lawn Place**—North side of Ingersoll Avenue and both sides of Waterbury Road, 49th to 56th Streets

## DETERMINED ELIGIBLE IN KEEPER OF THE REGISTER FINDING ENVIRONMENTAL IMPACT STATEMENT - CBD LOOP ARTERIAL, 1987

**Fort Des Moines #2 Archaeological District**—confluence of the rivers

**Woodland Cemetery**—Martin Luther King Jr. Parkway and Woodland Avenue

# History of Preservation in Des Moines

## AREAS WITH POTENTIAL FOR NATIONAL REGISTER PROPERTIES OR DISTRICTS

The following areas have been cited in studies as having potential to be districts eligible for the National Register or containing a number of properties that might be eligible for the National Register individually. Each area requires more intensive survey and identification work to be determined if the entire area or portions of the area are eligible. Some of the areas have integrity problems that may have made them ineligible since the time the district was originally noted. Regardless of National Register listing or potential, these are strong neighborhoods within the City of Des Moines that contribute to the community character of the city.

## RECOMMENDED FOR FURTHER STUDY IN TOWARDS A GREATER DES MOINES

by W.C. Page and J. Walroth 1992

**Brown's Woods Plat**—South of Grand Avenue to John Lynde Road, 37th to 42nd Streets

**Capital Park Plat**—E. 9th to E. 14th Streets, E. Washington to University Avenues

**Clark Street**—19th to 23rd Streets

**Connors Street**—S.E. 8th Street, Lacona and Bell Avenues

**Greenwood Park Plat**—Ingersoll Avenue to Grand Avenue, 39th to 42nd Streets

**Pennsylvania Avenue Corridor**—Pennsylvania Avenue between Washington and Roosevelt Avenues (includes Wise's Subdivision and Washington Heights Place)

**Portland Place Plat**—South of Grand Avenue along 37th Street

**South Main Street**—S.E. 6th Street, south of Hartford Avenue

## RECOMMENDED FOR FURTHER STUDY IN DES MOINES, A SURVEY OF HISTORIC SITES

by Barbara Beving Long, 1983

**Auto Row**—Both sides of Locust Street, 9th to 15th Streets

**Francis Avenue**—18th Street to Martin Luther King Parkway

## RECOMMENDED FOR FURTHER STUDY IN DES MOINES HERITAGE PHASE I AND II DES MOINES PLANNING COMMISSION, 1976 AND 1977

**Capitol East**—E. 15th to E. 18th Streets, Lyon to Dean Avenues

**Court Avenue Warehouse District**—South of Court Avenue

**Foster Drive**—42nd Street to Park Hill Drive along Woodlawn Drive

**Logan East**—E. 7th to E. 13th Street, University Avenue to the Freeway

**Terrace Hill District**—Polk and Hubbell Plat south of Grand Avenue, Allen Road to Terrace Place

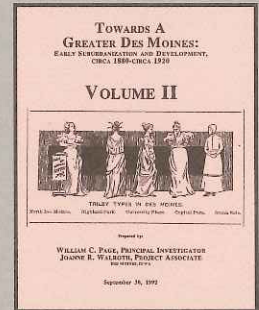
**Union Park**—6th Avenue to railroad tracks, Hull to Washington Avenues

## TRADITIONAL NEIGHBORHOODS

There are additional neighborhoods that have strong community character because of a particular housing style or type or because of the presence of unique streets within the area. These areas have never been cited in a particular study but are of interest to planners and residents because of their contribution to the city's character. These neighborhoods may contain a high concentration of historic housing stock particularly bungalows or Foursquares from the era 1907 through 1920.

State of Iowa demolishes Court Avenue Viaduct

*Towards a Greater Des Moines Early Suburbanization and Development* by W.C. Page and J. Walroth\*



City of Des Moines hosts annual Certified Local Government Conference  
*New Coalitions: Historic Preservation and Affordable Housing\**

1993

Des Moines Sesquicentennial

Designation of the Dragoon Trail



1994

Des Moines' Community Preservation Plan adopted as an element of Des Moines' Comprehensive Plan\*

Community Development Block Grant money allocated for National Register Nominations in River Bend Neighborhood

1995

City of Des Moines Park System History (in progress)

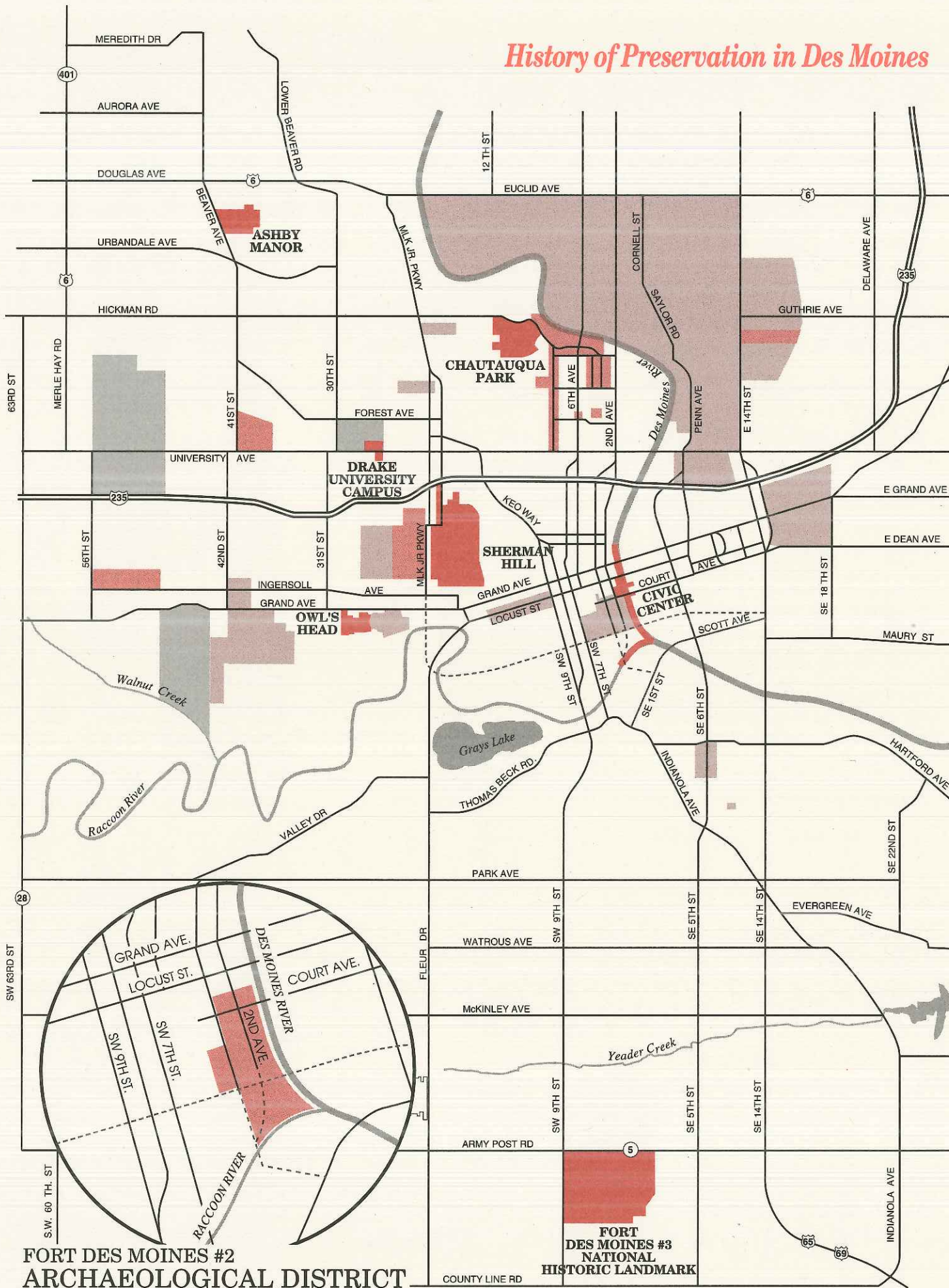
*Survey of Downtown Des Moines' Commercial Architecture 1889-1935* by Patricia Eckhardt\*

Community Development Block Grant money allocated for community preservation activities

- house moving
- mothballing of vacant houses

\* Grant funds administered through the State of Iowa Historical Society, Historic Preservation Bureau used in the project.

# History of Preservation in Des Moines



**FORT DES MOINES #2  
ARCHAEOLOGICAL DISTRICT**

**FORT  
DES MOINES #3  
NATIONAL  
HISTORIC LANDMARK**

# Programmatic Memorandum of Agreement

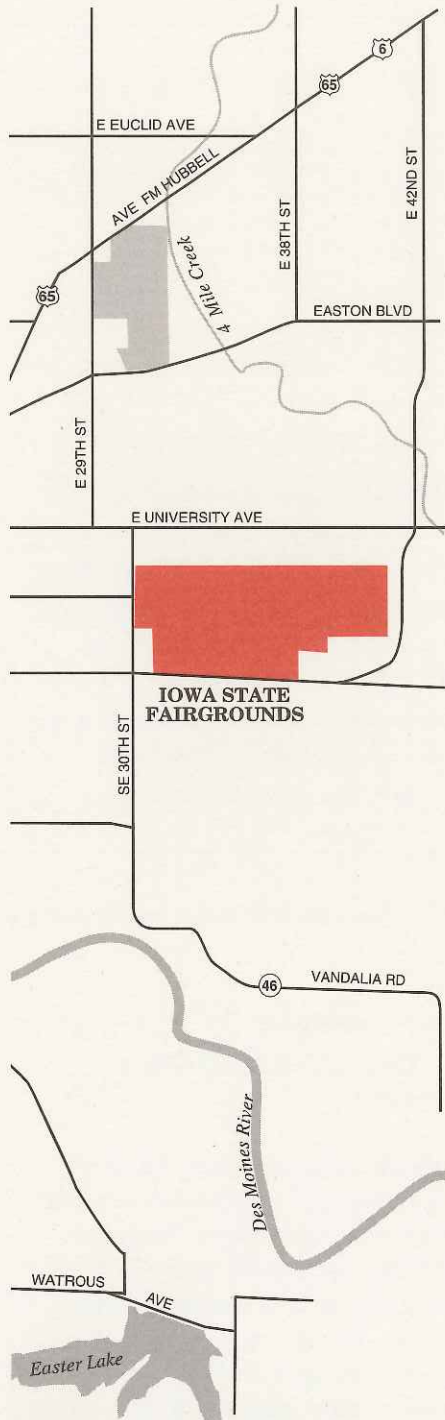
U.S. Department of Housing and Urban Development (HUD)


DES MOINES CITY-WIDE MAP, 1992

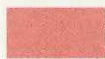
The City's expenditures of federal funds are regulated by Section 106 of the National Historic Preservation Act (16 U.S.C. 470). The City of Des Moines, Historical Society of Iowa, and Advisory Council on Historic Preservation developed a draft programmatic agreement that outlines procedures for HUD federally funded demolition, new construction and rehabilitation projects.


Under the terms of the agreement, the City of Des Moines first determines the property's eligibility for the National Register by using the map on the opposite page and past surveys of individual properties. The State Historic Preservation Office reviews all properties effected by federal funds listed in or eligible for the National Register. The City conducts a review on any property that is located in a future study area or area that may have some potential for National Register listing.

The PMOA deals with housing programs and programs for which the city regularly receives money through HUD. Large projects such as riverfront or downtown projects involving federal funds from other sources are still reviewed on a case-by-case basis. The full text of the Programmatic Memorandum of Agreement is listed in Chapter 6 (pages 72-75).



 DISTRICTS ON NATIONAL REGISTER REQUIRING SHPO REVIEW  
Page 73 for description

 DISTRICTS FOUND ELIGIBLE FOR NATIONAL REGISTER REQUIRING SHPO REVIEW  
Page 73 for description

 AREAS WITH POTENTIAL FOR NATIONAL REGISTER PROPERTIES OR DISTRICTS REQUIRING CITY STAFF REVIEW  
Page 73 for description