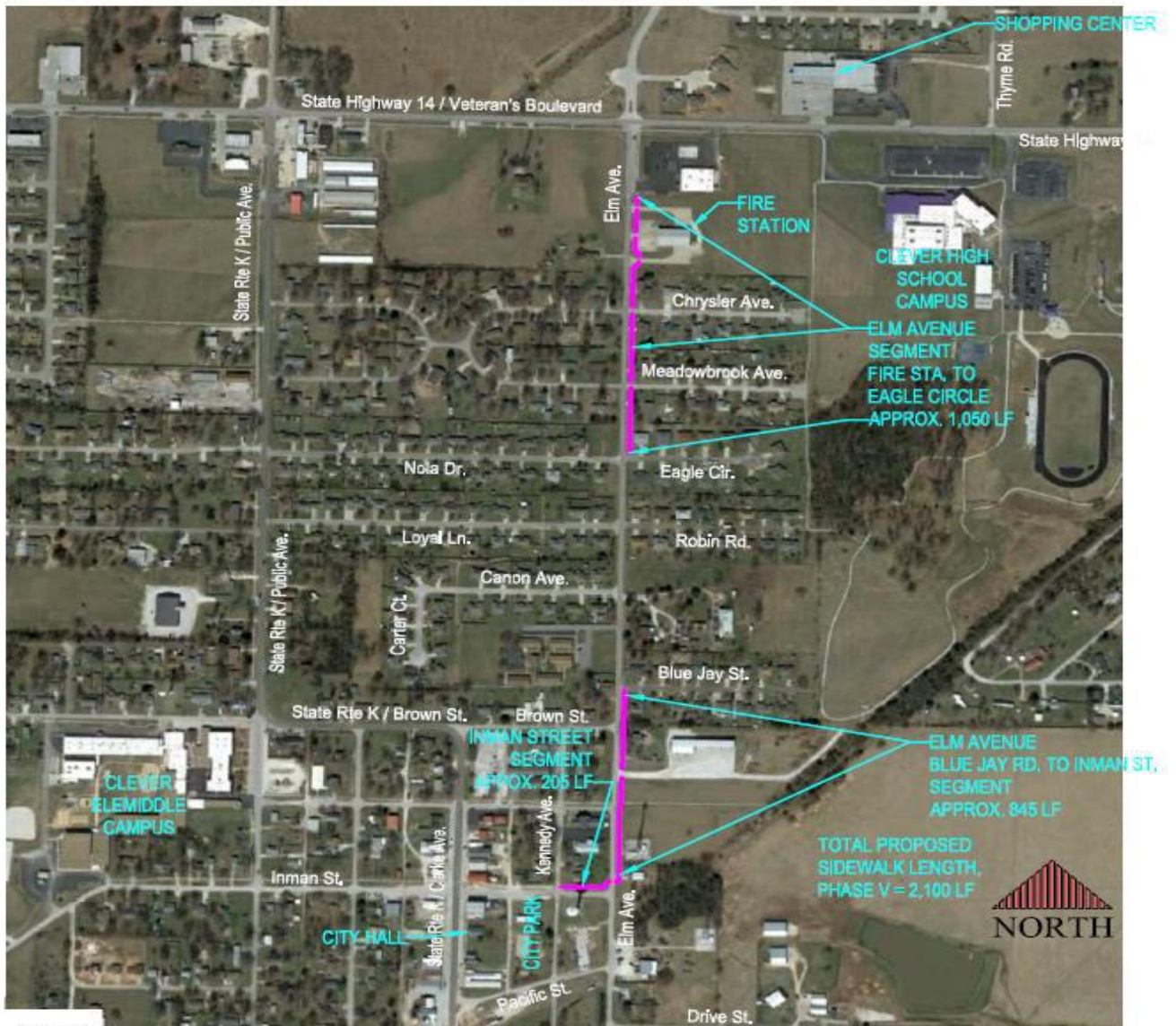


The Phase V section of sidewalk is planned along Elm Ave., from the fire station south to Eagle Cir. & from Blue Jay Rd. to Inman St. Sidewalk is planned along the north side of Inman St., from Elm Ave. to Kennedy Ave. Elm Ave. is the major north-south artery along the east side of town. Project has been approved for funding through MoDot. City is currently in the design phase with construction likely to start in the Fall of 2021 or Spring of 2022.



1 PROPOSED PHASE V SIDEWALK LAYOUT
 SCALE: 1" = 600'