

NOTICE OF MEETING

PUBLIC NOTICE IS HEREBY GIVEN THAT A REGULAR MEETING OF THE BOARD OF ALDERMEN OF THE CITY OF CLEVER, MISSOURI WILL BE HELD AT THE CLEVER CITY HALL, 304 S CLARKE AVE, CLEVER, MISSOURI ON OCTOBER 18, 2022, AT 6:30PM TO CONSIDER AND ACT UPON THE MATTERS ON THE FOLLOWING TENTATIVE AGENDA AND SUCH MATTERS AS MAY BE PRESENTED AT THE MEETING AND DETERMINED TO BE APPROPRIATE FOR DISCUSSION AT THE TIME:

1. CALL TO ORDER & PLEDGE OF ALLEGIANCE
2. MINUTES: September 27, 2022
3. FINANCIALS
 - a. August 2022 Financials:
Rev - Admin: \$69,051.91 St: \$7,324.51 Crt \$4,421.50 Water \$60,308.87 Sewer \$26,391.63
Exp - Admin: \$48,573.32 St: \$1,351.53 Crt \$8,430.50 Water \$38,086.67 Sewer \$31,095.84
 - b. Annual Audit – Marshal Decker with Decker and DeGood
4. WATER/WASTEWATER
 - a. Ronnie Keithley – Water Report
 - b. Bert Bond – Wastewater Report
5. COURT
 - a. Written
6. STREETS/PARKS/GROUNDS
7. PLANNING AND ZONING
 - a. Bill 20-2022 Ordinance 570: Carson's Corner – Replat and Rezoning
8. POLICE
9. ADMINISTRATION

Posted this 13th Day of October 2022.



Kristy Keithley

MINUTES

Mayor Hackworth called the regular meeting to order at 6:31 pm with the reciting of the Pledge of Allegiance. Aldermen present: Maisel, McPhail, and Schmidt. Alderman Larson was absent. Refer to sign in sheet for all others present.

MINUTES

McPhail made the motion to approve the minutes of August 16, 2022. Schmidt 2nd the motion passed with 3 ayes.

FINANCIALS

Schmidt made the motion to approve financials of August 2022 as presented: Rev - Admin: \$89,666.50 St: \$8,610.05 Crt \$5,422.00 Water \$360,887.80 Sewer \$492,163.61. Exp - Admin: \$63,290.88 St: \$6,299.53 Crt \$0.00 Water \$39,109.42 Sewer \$22,223.71. McPhail 2nd the motion and passed with 3 ayes.

WATER/WWTP

Mr. Keithley and Mr. Bond submitted a written reports.

Schmidt made the motion to approve the Director's Report and the Adjustment Report \$(340.98). Maisel 2nd the motion and passed with 3 ayes.

Discussion was held on the city's inflow and infiltration to the WWTP. Smoke testing and repairs will be starting in October.

COURT - written

STREET/PARKS/GROUNDS - written

PLANNING AND ZONING – No new business

POLICE – No new business

ADMINISTRATION

McPhail made the motion to approve the reading and passing of Bill 18-2022 Resolution 193: A Resolution of the City of Clever, County of Christian, State of Missouri authorizing the submission of a dot-gov domain authorization letter to the Cybersecurity and Infrastructure Security Agency. Schmidt 2nd the motion and passed by roll call vote: Maisel – Aye, Larson – Absent, Schmidt – Aye, and McPhail – Aye.

McPhail made the motion to approve the reading and passing of Bill 19-2022 Resolution 194: A Resolution of the City of Clever, County of Christian, State of Missouri declaring the month of September 2022, to be National Suicide Prevention Month in Clever, Missouri. Maisel 2nd the motion and passed by roll call vote: Maisel – Aye, Larson – Absent, Schmidt – Aye, and McPhail – Aye. Clerk is to bring this resolution annually in August.

Schmidt made the motion to adjourn at 7:30 pm. McPhail 2nd the motion and passed with 3 ayes.

Respectfully Submitted,

Date Approved:_____

Kristy Keithley - City Clerk

Scott Hackworth – Mayor

FINANCIAL

CITY OF CLEVER FINANCIALS

10/12/22 3:00 PM
Page 1

Fund Abbrev	Account Descr	22-23 Budget	September 22-23 Amt	22-23 % of Budget Remain	22-23 YTD Amt
Act Type R Revenue					
Fund 10 General Fund					
Dept 100 Administration					
GF	R 10-100-45950 Fines & Forfeitures	\$30,000.00	\$4,133.79	41.54%	\$17,537.09
GF	R 10-100-42030 Use Tax	\$60,000.00	\$7,813.51	63.58%	\$21,851.59
GF	R 10-100-50000 CARES ACT	\$0.00	\$0.00	0.00%	\$0.00
GF	R 10-100-49990 Sidewalk Grant	\$0.00	\$0.00	0.00%	\$0.00
GF	R 10-100-49010 Transfer Between Accts	\$0.00	\$0.00	0.00%	\$0.00
GF	R 10-100-49000 Miscellaneous Income	\$400.00	\$2,617.37	-558.18%	\$2,632.70
GF	R 10-100-48020 Grant Fund Revenue	\$0.00	\$0.00	0.00%	\$0.00
GF	R 10-100-48000 Interest Income	\$5,000.00	\$597.56	62.75%	\$1,862.66
GF	R 10-100-47520 NSF Checks	\$0.00	\$0.00	0.00%	\$0.00
GF	R 10-100-47510 Dog Impound	\$600.00	\$0.00	100.00%	\$0.00
GF	R 10-100-47500 Dog License	\$700.00	\$55.00	84.29%	\$110.00
GF	R 10-100-46000 LET-Officer Training	\$0.00	\$0.00	0.00%	\$0.00
GF	R 10-100-45960 Clerk/Judge Fee	\$300.00	\$33.49	58.84%	\$123.49
GF	R 10-100-44900 Business License	\$4,500.00	\$75.00	89.44%	\$475.00
GF	R 10-100-42010 County Property Tax	\$170,000.00	\$434.78	97.68%	\$3,951.91
GF	R 10-100-42500 Electric Franchise	\$27,000.00	\$2,929.89	67.84%	\$8,683.12
GF	R 10-100-40000 Charge for Service	\$500.00	\$10.00	93.56%	\$32.20
GF	R 10-100-40020 Build Permit-Plan Rev-Inspc	\$7,000.00	\$461.13	83.74%	\$1,138.20
GF	R 10-100-42510 Communication Franchise	\$3,600.00	\$300.00	83.33%	\$600.00
GF	R 10-100-45970 Inmate Security Fund	\$0.00	\$0.00	0.00%	\$0.00
GF	R 10-100-42000 MoDOR Sales Tax	\$210,000.00	\$21,785.56	66.05%	\$71,293.60
GF	R 10-100-44800 Motor Vehicle Sales Tax	\$16,000.00	\$2,395.99	60.65%	\$6,295.88
GF	R 10-100-43200 Gas Franchise	\$20,000.00	\$0.00	-17.69%	\$23,538.67
GF	R 10-100-44400 Nuisance Abatement	\$500.00	\$0.00	100.00%	\$0.00
GF	R 10-100-44500 Surtax	\$10,000.00	\$0.00	100.00%	\$0.00
GF	R 10-100-44600 Motor Vehicle Fuel Tax	\$50,000.00	\$6,070.04	65.04%	\$17,477.79
GF	R 10-100-44700 Motor Vehicle Fee Increase	\$8,000.00	\$1,015.03	67.63%	\$2,589.29
GF	R 10-100-43100 Utility Tax	\$32,000.00	\$3,612.12	69.07%	\$9,897.83
Dept 100 Administration		\$656,100.00	\$54,340.26	71.03%	\$190,091.02
Dept 200 Police					
GF	R 10-200-48020 Grant Fund Revenue	\$100.00	\$6,699.15	-7071.65%	\$7,171.65
GF	R 10-200-46000 LET-Officer Training	\$600.00	\$66.00	59.00%	\$246.00
GF	R 10-200-50000 CARES ACT	\$0.00	\$0.00	0.00%	\$0.00
GF	R 10-200-49020 School Resource Officer	\$85,000.00	\$7,500.00	73.51%	\$22,515.73
GF	R 10-200-49000 Miscellaneous Income	\$400.00	\$220.50	44.88%	\$220.50
GF	R 10-200-45972 Equipment Sales	\$500.00	\$0.00	100.00%	\$0.00
GF	R 10-200-40000 Charge for Service	\$400.00	\$10.00	93.75%	\$25.00
GF	R 10-200-45971 DWI:Recoop Fee	\$500.00	\$0.00	100.00%	\$0.00
GF	R 10-200-45970 Inmate Security Fund	\$600.00	\$66.00	59.33%	\$244.00
GF	R 10-200-42040 Seizure Funds	\$0.00	\$0.00	0.00%	\$0.00
GF	R 10-200-48030 Donations	\$0.00	\$150.00	0.00%	\$150.00
Dept 200 Police		\$88,100.00	\$14,711.65	65.30%	\$30,572.88
Dept 300 Court					
GF	R 10-300-50000 CARES ACT	\$0.00	\$0.00	0.00%	\$0.00
Dept 300 Court		\$0.00	\$0.00	0.00%	\$0.00
Fund 10 General Fund		\$744,200.00	\$69,051.91	70.35%	\$220,663.90

CITY OF CLEVER FINANCIALS

10/12/22 3:00 PM
Page 2

Fund Abbrev	Account Descr	22-23 Budget	September 22-23 Amt	22-23 % of Budget Remain	22-23 YTD Amt
Fund 20 Street Improvements					
Dept 400 Streets					
STRT I	R 20-400-41100 3/8% TE Sales Tax	\$70,000.00	\$7,324.51	66.62%	\$23,366.73
STRT I	R 20-400-49010 Transfer Between Accts	\$0.00	\$0.00	0.00%	\$0.00
STRT I	R 20-400-49000 Miscellaneous Income	\$0.00	\$0.00	0.00%	\$0.00
STRT I	R 20-400-48020 Grant Fund Revenue	\$0.00	\$0.00	0.00%	\$1,050.00
STRT I	R 20-400-48000 Interest Income	\$200.00	\$0.00	100.00%	\$0.00
STRT I	R 20-400-44800 Motor Vehicle Sales Tax	\$0.00	\$0.00	0.00%	\$0.00
STRT I	R 20-400-44700 Motor Vehicle Fee Increase	\$0.00	\$0.00	0.00%	\$0.00
STRT I	R 20-400-42020 County Sales Tax	\$0.00	\$0.00	0.00%	\$0.00
STRT I	R 20-400-44600 Motor Vehicle Fuel Tax	\$0.00	\$0.00	0.00%	\$0.00
Dept 400 Streets		\$70,200.00	\$7,324.51	65.22%	\$24,416.73
Fund 20 Street Improvements		\$70,200.00	\$7,324.51	65.22%	\$24,416.73
Fund 25 Sidewalk					
Dept 900 Sidewalk					
SWLK	R 25-900-49990 Sidewalk Grant	\$0.00	\$0.00	0.00%	\$0.00
Dept 900 Sidewalk		\$0.00	\$0.00	0.00%	\$0.00
Fund 25 Sidewalk		\$0.00	\$0.00	0.00%	\$0.00
Fund 35 Library					
Dept 800 Library					
LIB	R 35-800-46250 Library	\$0.00	\$0.00	0.00%	\$0.00
LIB	R 35-800-49010 Transfer Between Accts	\$0.00	\$0.00	0.00%	\$0.00
Dept 800 Library		\$0.00	\$0.00	0.00%	\$0.00
Fund 35 Library		\$0.00	\$0.00	0.00%	\$0.00
Fund 36 Library Money Market					
Dept 800 Library					
LIBMM	R 36-800-48000 Interest Income	\$0.00	\$0.00	0.00%	\$0.00
LIBMM	R 36-800-49010 Transfer Between Accts	\$0.00	\$0.00	0.00%	\$0.00
Dept 800 Library		\$0.00	\$0.00	0.00%	\$0.00
Fund 36 Library Money Market		\$0.00	\$0.00	0.00%	\$0.00
Fund 50 Municipal Court					
Dept 300 Court					
MC	R 50-300-45950 Fines & Forfeitures	\$40,000.00	\$4,421.50	58.98%	\$16,407.50
MC	R 50-300-47520 NSF Checks	\$0.00	\$0.00	0.00%	\$0.00
MC	R 50-300-49010 Transfer Between Accts	\$0.00	\$0.00	0.00%	\$0.00
Dept 300 Court		\$40,000.00	\$4,421.50	58.98%	\$16,407.50
Fund 50 Municipal Court		\$40,000.00	\$4,421.50	58.98%	\$16,407.50
Fund 60 Water Fund					
Dept 600 Water					
WF	R 60-600-50001 ARPA Funding	\$0.00	\$0.00	0.00%	\$282,166.06
WF	R 60-600-49000 Miscellaneous Income	\$100.00	\$968.07	-9368.07%	\$9,468.07
WF	R 60-600-49010 Transfer Between Accts	\$0.00	\$0.00	0.00%	\$0.00
WF	R 60-600-49100 1/2% Capital Impro Sales T	\$105,000.00	\$10,892.68	66.05%	\$35,646.67
WF	R 60-600-49200 1999 A&B Bond	\$0.00	\$0.00	0.00%	\$0.00
WF	R 60-600-49201 2022 WW&SS Bond	\$0.00	\$2,250.00	0.00%	\$6,750.00
WF	R 60-600-49202 2002B Rsrv	\$0.00	\$0.00	0.00%	\$0.00

CITY OF CLEVER FINANCIALS

10/12/22 3:00 PM
Page 3

Fund Abbrev	Account Descr	22-23 Budget	September 22-23 Amt	22-23 % of Budget Remain	22-23 YTD Amt
WF	R 60-600-50000 CARES ACT	\$0.00	\$0.00	0.00%	\$0.00
WF	R 60-600-48020 Grant Fund Revenue	\$0.00	\$0.00	0.00%	\$0.00
WF	R 60-600-44710 Sales Tax Collections	\$4,700.00	\$443.50	66.97%	\$1,518.94
WF	R 60-600-49204 2003 Rsrv	\$0.00	\$0.00	0.00%	\$0.00
WF	R 60-600-40000 Charge for Service	\$270,000.00	\$27,832.13	64.33%	\$94,612.89
WF	R 60-600-47520 NSF Checks	\$500.00	-\$500.61	182.86%	-\$441.81
WF	R 60-600-48010 Interest Bond Funds	\$3,500.00	\$660.62	42.88%	\$1,999.25
WF	R 60-600-44705 Primacy Fees	\$4,500.00	\$469.74	66.45%	\$1,476.97
WF	R 60-600-42130 Meter Set Sales	\$4,000.00	\$398.00	90.05%	\$398.00
WF	R 60-600-41620 Trash Service	\$150,000.00	\$13,432.35	71.51%	\$41,644.60
WF	R 60-600-41610 Penalties Assessed	\$11,000.00	\$944.24	71.59%	\$3,015.51
WF	R 60-600-41000 Utility Deposits	\$9,000.00	\$1,148.11	72.75%	\$2,452.16
WF	R 60-600-40200 Hook Up Fees	\$9,000.00	\$0.00	100.00%	\$0.00
WF	R 60-600-40010 Disconnect & Reconnect Fe	\$4,000.00	\$400.00	71.25%	\$1,150.00
WF	R 60-600-48000 Interest Income	\$7,000.00	\$970.04	62.14%	\$2,650.35
Dept 600 Water		\$582,300.00	\$60,308.87	16.28%	\$484,507.66
Fund 60 Water Fund		\$582,300.00	\$60,308.87	16.28%	\$484,507.66
Fund 70 Sewer Fund					
Dept 700 Sewer					
SF	R 70-700-50000 CARES ACT	\$0.00	\$0.00	0.00%	\$0.00
SF	R 70-700-50001 ARPA Funding	\$279,400.00	\$0.00	100.00%	\$0.00
SF	R 70-700-49201 2022 WW&SS Bond	\$0.00	\$2,250.00	0.00%	\$6,750.00
SF	R 70-700-48010 Interest Bond Funds	\$0.00	\$0.00	0.00%	\$0.00
SF	R 70-700-40200 Hook Up Fees	\$12,000.00	\$0.00	100.00%	\$0.00
SF	R 70-700-40000 Charge for Service	\$270,000.00	\$24,141.63	71.70%	\$74,620.25
SF	R 70-700-48020 Grant Fund Revenue	\$0.00	\$0.00	0.00%	\$4,400.60
Dept 700 Sewer		\$561,400.00	\$26,391.63	84.41%	\$85,770.85
Fund 70 Sewer Fund		\$561,400.00	\$26,391.63	84.41%	\$85,770.85
Act Type R Revenue		\$1,998,100.00	\$167,498.42	58.13%	\$831,766.64
Act Type E Expenditure					
Fund 10 General Fund					
Dept 100 Administration					
GF	E 10-100-6900 Utilities	\$1,000.00	\$60.66	83.29%	\$167.06
GF	E 10-100-6500 Equipment Expense	\$0.00	\$0.00	0.00%	\$0.00
GF	E 10-100-7800 Grant Money	\$0.00	\$0.00	0.00%	\$0.00
GF	E 10-100-6501 Capital-Property	\$0.00	\$0.00	0.00%	\$0.00
GF	E 10-100-6502 Capital-Transportation	\$0.00	\$0.00	0.00%	\$0.00
GF	E 10-100-6503 Capital-Equipment	\$5,000.00	\$425.00	63.02%	\$1,849.03
GF	E 10-100-6550 Postage Expense	\$1,200.00	\$89.94	86.26%	\$139.92
GF	E 10-100-6620 Repairs & Maintenance	\$1,000.00	\$0.00	100.00%	\$0.00
GF	E 10-100-7011 SIDEWALK PHASE IV	\$0.00	\$0.00	0.00%	\$0.00
GF	E 10-100-6800 Telephone	\$1,000.00	\$88.02	72.71%	\$264.16
GF	E 10-100-6901 Vehicle Gas	\$0.00	\$0.00	0.00%	\$0.00
GF	E 10-100-6950 Cleaning	\$300.00	\$25.00	91.67%	\$25.00
GF	E 10-100-6960 Office Supplies	\$1,500.00	\$25.48	89.35%	\$159.82
GF	E 10-100-6999 Transfer Between Accts	\$0.00	\$0.00	0.00%	\$0.00
GF	E 10-100-6211 Professional Fees	\$25,000.00	\$1,515.25	48.34%	\$10,782.63
GF	E 10-100-6700 Supplies Expense	\$600.00	\$0.00	46.71%	\$278.04
GF	E 10-100-5300 Unemployment	\$400.00	\$0.34	39.25%	\$242.99
GF	E 10-100-6321 Work Comp Insurance	\$1,200.00	\$0.00	-0.83%	\$1,210.00

CITY OF CLEVER FINANCIALS

10/12/22 3:00 PM
Page 4

Fund Abbrev	Account Descr	22-23 Budget	September 22-23 Amt	22-23 % of Budget Remain	22-23 YTD Amt
GF	E 10-100-6450 Miscellaneous	\$500.00	\$0.00	100.00%	\$0.00
GF	E 10-100-5051 Uniforms	\$400.00	\$0.00	100.00%	\$0.00
GF	E 10-100-5200 Group Insurance	\$6,000.00	\$617.87	69.12%	\$1,852.76
GF	E 10-100-5000 Salaries	\$52,808.00	\$6,334.32	70.97%	\$15,330.41
GF	E 10-100-5400 Lagers	\$2,000.00	\$266.23	53.89%	\$922.14
GF	E 10-100-5500 Conference & Training	\$1,000.00	\$112.50	56.23%	\$353.54
GF	E 10-100-6000 Advertising	\$600.00	\$53.04	63.26%	\$220.44
GF	E 10-100-6011 Contract Labor	\$5,000.00	\$60.00	82.60%	\$720.00
GF	E 10-100-6012 Nuisance Abatement	\$700.00	\$0.00	100.00%	\$0.00
GF	E 10-100-6020 Audit Expense	\$1,300.00	\$0.00	100.00%	\$0.00
GF	E 10-100-6120 Dues & Subscriptions	\$7,000.00	\$2,000.00	71.43%	\$2,000.00
GF	E 10-100-6200 Elections	\$1,200.00	\$0.00	100.00%	\$0.00
GF	E 10-100-6300 City Insurance	\$2,500.00	\$0.00	100.00%	\$0.00
GF	E 10-100-5100 FICA	\$5,000.00	\$484.32	76.57%	\$1,171.66
Dept 100 Administration		\$124,208.00	\$12,157.97	67.69%	\$37,689.60
Dept 200 Police					
GF	E 10-200-6000 Advertising	\$0.00	\$0.00	0.00%	\$0.00
GF	E 10-200-6321 Work Comp Insurance	\$9,000.00	\$0.00	-6.17%	\$9,555.30
GF	E 10-200-6211 Professional Fees	\$8,000.00	\$2,207.44	-89.22%	\$14,641.95
GF	E 10-200-6120 Dues & Subscriptions	\$2,000.00	\$0.00	100.00%	\$0.00
GF	E 10-200-6020 Audit Expense	\$850.00	\$0.00	100.00%	\$0.00
GF	E 10-200-6011 Contract Labor	\$0.00	\$0.00	0.00%	\$0.00
GF	E 10-200-5500 Conference & Training	\$10,000.00	\$250.72	78.84%	\$2,115.52
GF	E 10-200-5400 Lagers	\$18,000.00	\$1,632.79	68.56%	\$5,658.86
GF	E 10-200-5300 Unemployment	\$2,434.80	\$1.62	99.77%	\$5.70
GF	E 10-200-5200 Group Insurance	\$63,000.00	\$5,526.53	73.19%	\$16,893.14
GF	E 10-200-5100 FICA	\$42,000.00	\$1,565.10	86.81%	\$5,540.87
GF	E 10-200-5051 Uniforms	\$2,000.00	\$0.00	46.45%	\$1,071.00
GF	E 10-200-6350 Vehicle Repair	\$10,000.00	\$480.71	83.92%	\$1,608.28
GF	E 10-200-5000 Salaries	\$307,424.00	\$20,497.03	76.40%	\$72,543.83
GF	E 10-200-6900 Utilities	\$3,500.00	\$405.80	67.56%	\$1,135.43
GF	E 10-200-6300 City Insurance	\$18,000.00	\$0.00	100.00%	\$0.00
GF	E 10-200-7009 PD Grant Money	\$0.00	\$0.00	0.00%	\$0.00
GF	E 10-200-7008 Seizure Funds	\$0.00	\$0.00	0.00%	\$0.00
GF	E 10-200-6960 Office Supplies	\$1,400.00	\$270.61	74.40%	\$330.22
GF	E 10-200-6901 Vehicle Gas	\$14,000.00	\$2,088.25	55.81%	\$6,186.36
GF	E 10-200-7801 Donation Expenditures	\$0.00	\$0.00	0.00%	\$0.00
GF	E 10-200-6800 Telephone	\$7,000.00	\$623.98	64.16%	\$2,180.69
GF	E 10-200-6750 Car Wash	\$0.00	\$0.00	0.00%	\$0.00
GF	E 10-200-6499 Ammo Expense	\$5,000.00	\$0.00	100.00%	\$0.00
GF	E 10-200-6950 Cleaning	\$1,000.00	\$35.00	79.00%	\$175.00
GF	E 10-200-6498 Equipment Program	\$0.00	\$0.00	0.00%	\$0.00
GF	E 10-200-6700 Supplies Expense	\$1,000.00	\$280.49	36.14%	\$638.62
GF	E 10-200-6500 Equipment Expense	\$5,000.00	\$0.00	95.31%	\$234.68
GF	E 10-200-6501 Capital-Property	\$10,000.00	\$0.00	100.00%	\$0.00
GF	E 10-200-6502 Capital-Transportation	\$30,000.00	\$0.00	100.00%	\$0.00
GF	E 10-200-6503 Capital-Equipment	\$20,000.00	\$0.00	77.14%	\$4,572.57
GF	E 10-200-6550 Postage Expense	\$300.00	\$0.00	100.00%	\$0.00
GF	E 10-200-6620 Repairs & Maintenance	\$2,000.00	\$0.00	90.00%	\$0.00
Dept 200 Police		\$592,908.80	\$35,866.07	75.35%	\$145,088.02
Dept 300 Court					

CITY OF CLEVER FINANCIALS

10/12/22 3:00 PM
Page 5

Fund Abbrev	Account Descr	22-23 Budget	September 22-23 Amt	22-23 % of Budget Remain	22-23 YTD Amt
GF	E 10-300-6211 Professional Fees	\$0.00	\$0.00	0.00%	\$0.00
GF	E 10-300-6800 Telephone	\$150.00	\$0.00	100.00%	\$0.00
GF	E 10-300-6770 Inmate Security Fund	\$0.00	\$0.00	0.00%	\$0.00
GF	E 10-300-6550 Postage Expense	\$50.00	\$0.00	100.00%	\$0.00
GF	E 10-300-6503 Capital-Equipment	\$0.00	\$0.00	0.00%	\$0.00
GF	E 10-300-6321 Work Comp Insurance	\$50.00	\$0.00	0.00%	\$50.00
GF	E 10-300-6300 City Insurance	\$100.00	\$0.00	100.00%	\$0.00
GF	E 10-300-6960 Office Supplies	\$250.00	\$0.00	100.00%	\$0.00
GF	E 10-300-6120 Dues & Subscriptions	\$200.00	\$0.00	100.00%	\$0.00
GF	E 10-300-5608 Judges Pay	\$6,000.00	\$0.00	66.67%	\$1,500.00
GF	E 10-300-5500 Conference & Training	\$1,100.00	\$0.00	100.00%	\$0.00
GF	E 10-300-5400 Lagers	\$400.00	\$27.08	75.86%	\$96.58
GF	E 10-300-5300 Unemployment	\$70.00	\$0.02	99.86%	\$0.10
GF	E 10-300-5200 Group Insurance	\$1,200.00	\$117.40	70.66%	\$352.06
GF	E 10-300-5000 Salaries	\$4,900.00	\$376.01	73.22%	\$1,312.01
GF	E 10-300-5100 FICA	\$600.00	\$28.77	83.27%	\$100.38
Dept 300 Court		\$15,070.00	\$549.28	74.05%	\$3,411.13
Dept 500 Parks					
GF	E 10-500-6503 Capital-Equipment	\$70,000.00	\$0.00	100.00%	\$0.00
GF	E 10-500-6620 Repairs & Maintenance	\$1,000.00	\$0.00	91.51%	\$84.95
GF	E 10-500-6700 Supplies Expense	\$0.00	\$0.00	0.00%	\$0.00
GF	E 10-500-6350 Vehicle Repair	\$400.00	\$0.00	70.00%	\$119.99
GF	E 10-500-6300 City Insurance	\$1,000.00	\$0.00	100.00%	\$0.00
GF	E 10-500-6321 Work Comp Insurance	\$150.00	\$0.00	14.33%	\$128.50
GF	E 10-500-6901 Vehicle Gas	\$200.00	\$0.00	100.00%	\$0.00
GF	E 10-500-6500 Equipment Expense	\$300.00	\$0.00	100.00%	\$0.00
Dept 500 Parks		\$73,050.00	\$0.00	99.54%	\$333.44
Fund 10 General Fund		\$805,236.80	\$48,573.32	76.34%	\$186,522.19
Fund 20 Street Improvements					
Dept 400 Streets					
STRT I	E 20-400-6310 Paving	\$170,000.00	\$0.00	100.00%	\$0.00
STRT I	E 20-400-7800 Grant Money	\$0.00	\$0.00	0.00%	\$0.00
STRT I	E 20-400-6902 Street Lighting	\$13,000.00	\$1,088.24	83.32%	\$2,168.85
STRT I	E 20-400-6684 Sign Expense	\$14,000.00	\$0.00	55.26%	\$6,264.03
STRT I	E 20-400-6683 Snow Removal	\$1,000.00	\$0.00	100.00%	\$0.00
STRT I	E 20-400-6620 Repairs & Maintenance	\$1,200.00	\$263.29	77.48%	\$263.29
STRT I	E 20-400-6601 Animal Control	\$4,000.00	\$0.00	95.56%	\$62.47
STRT I	E 20-400-6503 Capital-Equipment	\$12,000.00	\$0.00	100.00%	\$0.00
STRT I	E 20-400-6500 Equipment Expense	\$3,000.00	\$0.00	100.00%	\$0.00
STRT I	E 20-400-6321 Work Comp Insurance	\$300.00	\$0.00	53.00%	\$141.00
STRT I	E 20-400-6300 City Insurance	\$2,000.00	\$0.00	100.00%	\$0.00
STRT I	E 20-400-6211 Professional Fees	\$5,000.00	\$0.00	100.00%	\$0.00
STRT I	E 20-400-6120 Dues & Subscriptions	\$50.00	\$0.00	100.00%	\$0.00
STRT I	E 20-400-6020 Audit Expense	\$300.00	\$0.00	100.00%	\$0.00
STRT I	E 20-400-6000 Advertising	\$300.00	\$0.00	100.00%	\$0.00
STRT I	E 20-400-6350 Vehicle Repair	\$500.00	\$0.00	100.00%	\$0.00
Dept 400 Streets		\$226,650.00	\$1,351.53	96.02%	\$8,899.64
Fund 20 Street Improvements		\$226,650.00	\$1,351.53	96.02%	\$8,899.64
Fund 25 Sidewalk					
Dept 900 Sidewalk					

CITY OF CLEVER FINANCIALS

10/12/22 3:00 PM
Page 6

Fund Abbrev	Account Descr	22-23 Budget	September 22-23 Amt	22-23 % of Budget Remain	22-23 YTD Amt
SWLK	E 25-900-7011 SIDEWALK PHASE IV	\$0.00	\$0.00	0.00%	\$0.00
Dept 900 Sidewalk		\$0.00	\$0.00	0.00%	\$0.00
Fund 25 Sidewalk		\$0.00	\$0.00	0.00%	\$0.00
Fund 35 Library					
Dept 800 Library					
LIB	E 35-800-6250 Library Expense	\$0.00	\$0.00	0.00%	\$0.00
Dept 800 Library		\$0.00	\$0.00	0.00%	\$0.00
Fund 35 Library		\$0.00	\$0.00	0.00%	\$0.00
Fund 36 Library Money Market					
Dept 800 Library					
LIBMM	E 36-800-6999 Transfer Between Accts	\$0.00	\$0.00	0.00%	\$0.00
Dept 800 Library		\$0.00	\$0.00	0.00%	\$0.00
Fund 36 Library Money Market		\$0.00	\$0.00	0.00%	\$0.00
Fund 50 Municipal Court					
Dept 300 Court					
MC	E 50-300-6010 NSF Checks	\$0.00	\$0.00	0.00%	\$0.00
MC	E 50-300-6760 Fines & Forfeitures	\$35,000.00	\$8,430.50	52.59%	\$16,594.50
MC	E 50-300-6999 Transfer Between Accts	\$0.00	\$0.00	0.00%	\$0.00
Dept 300 Court		\$35,000.00	\$8,430.50	52.59%	\$16,594.50
Fund 50 Municipal Court		\$35,000.00	\$8,430.50	52.59%	\$16,594.50
Fund 60 Water Fund					
Dept 600 Water					
WF	E 60-600-6960 Office Supplies	\$3,000.00	\$38.28	76.69%	\$699.18
WF	E 60-600-6500 Equipment Expense	\$400.00	\$0.00	100.00%	\$0.00
WF	E 60-600-6501 Capital-Property	\$0.00	\$0.00	0.00%	\$0.00
WF	E 60-600-6503 Capital-Equipment	\$60,000.00	\$637.50	96.56%	\$2,061.54
WF	E 60-600-6550 Postage Expense	\$3,000.00	\$329.32	61.69%	\$911.22
WF	E 60-600-6620 Repairs & Maintenance	\$10,000.00	\$955.70	90.25%	\$974.68
WF	E 60-600-6700 Supplies Expense	\$2,000.00	\$0.00	8.59%	\$1,344.60
WF	E 60-600-6800 Telephone	\$3,500.00	\$232.23	75.22%	\$807.04
WF	E 60-600-6810 Trash Service	\$155,000.00	\$14,196.89	72.54%	\$28,443.83
WF	E 60-600-6900 Utilities	\$41,000.00	\$4,783.87	65.93%	\$13,970.38
WF	E 60-600-6950 Cleaning	\$500.00	\$25.00	70.00%	\$125.00
WF	E 60-600-6999 Transfer Between Accts	\$0.00	\$0.00	0.00%	\$0.00
WF	E 60-600-7000 Bond Transfers To	\$0.00	\$2,250.00	0.00%	\$6,750.00
WF	E 60-600-5000 Salaries	\$74,672.00	\$5,715.66	74.96%	\$18,694.69
WF	E 60-600-7005 Depreciation	\$0.00	\$0.00	0.00%	\$0.00
WF	E 60-600-8230 Bond Principal 2022	\$25,000.00	\$0.00	100.00%	\$0.00
WF	E 60-600-6450 Miscellaneous	\$1,000.00	\$0.00	100.00%	\$0.00
WF	E 60-600-6901 Vehicle Gas	\$4,500.00	\$308.45	71.64%	\$1,276.41
WF	E 60-600-5450 Utility Deposit Refund	\$7,000.00	\$784.86	67.93%	\$2,047.23
WF	E 60-600-5100 FICA	\$4,300.00	\$435.14	66.92%	\$1,422.28
WF	E 60-600-5200 Group Insurance	\$14,000.00	\$1,533.39	71.30%	\$4,017.38
WF	E 60-600-6350 Vehicle Repair	\$1,000.00	\$84.92	54.38%	\$456.22
WF	E 60-600-5400 Lagers	\$4,000.00	\$335.78	68.57%	\$1,257.10
WF	E 60-600-5051 Uniforms	\$1,300.00	\$264.31	47.54%	\$584.23
WF	E 60-600-5500 Conference & Training	\$1,500.00	\$168.75	80.33%	\$168.75
WF	E 60-600-6000 Advertising	\$500.00	\$0.00	93.30%	\$33.48

CITY OF CLEVER FINANCIALS

10/12/22 3:00 PM
Page 7

Fund Abbrev	Account Descr	22-23 Budget	September 22-23 Amt	22-23 % of Budget Remain	22-23 YTD Amt
WF	E 60-600-6020 Audit Expense	\$3,000.00	\$0.00	100.00%	\$0.00
WF	E 60-600-6120 Dues & Subscriptions	\$3,300.00	\$1,500.00	40.91%	\$1,500.00
WF	E 60-600-6211 Professional Fees	\$15,000.00	\$993.75	21.40%	\$11,106.53
WF	E 60-600-6255 Sales Tax Payable	\$6,200.00	\$0.00	100.00%	\$0.00
WF	E 60-600-6290 Primacy Payables	\$5,000.00	\$1,228.92	75.42%	\$1,228.92
WF	E 60-600-6300 City Insurance	\$13,000.00	\$0.00	100.00%	\$0.00
WF	E 60-600-6011 Contract Labor	\$5,000.00	\$47.50	97.54%	\$102.50
WF	E 60-600-5300 Unemployment	\$600.00	\$0.45	99.75%	\$1.49
WF	E 60-600-6321 Work Comp Insurance	\$5,000.00	\$1,236.00	45.22%	\$2,738.96
Dept 600 Water		\$473,272.00	\$38,086.67	74.81%	\$102,723.64
Fund 60 Water Fund		\$473,272.00	\$38,086.67	74.81%	\$102,723.64
Fund 70 Sewer Fund					
Dept 700 Sewer					
SF	E 70-700-6502 Capital-Transportation	\$0.00	\$0.00	0.00%	\$0.00
SF	E 70-700-6900 Utilities	\$35,000.00	\$3,457.84	73.13%	\$9,405.92
SF	E 70-700-6800 Telephone	\$3,500.00	\$226.43	74.37%	\$789.66
SF	E 70-700-6700 Supplies Expense	\$36,000.00	\$2,235.82	79.97%	\$7,131.89
SF	E 70-700-6620 Repairs & Maintenance	\$60,000.00	\$122.47	97.38%	\$1,507.88
SF	E 70-700-6503 Capital-Equipment	\$125,000.00	\$637.50	98.35%	\$2,061.54
SF	E 70-700-6550 Postage Expense	\$3,200.00	\$329.32	57.52%	\$1,121.12
SF	E 70-700-6901 Vehicle Gas	\$4,000.00	\$308.44	85.15%	\$593.85
SF	E 70-700-6950 Cleaning	\$500.00	\$25.00	70.00%	\$125.00
SF	E 70-700-6960 Office Supplies	\$2,000.00	\$38.28	57.77%	\$844.54
SF	E 70-700-6999 Transfer Between Accts	\$0.00	\$0.00	0.00%	\$0.00
SF	E 70-700-7000 Bond Transfers To	\$0.00	\$2,250.00	0.00%	\$6,750.00
SF	E 70-700-6501 Capital-Property	\$20,000.00	\$0.00	100.00%	\$0.00
SF	E 70-700-8230 Bond Principal 2022	\$25,000.00	\$0.00	100.00%	\$0.00
SF	E 70-700-5500 Conference & Training	\$1,000.00	\$168.75	70.49%	\$168.75
SF	E 70-700-7005 Depreciation	\$0.00	\$0.00	0.00%	\$0.00
SF	E 70-700-6000 Advertising	\$0.00	\$0.00	0.00%	\$33.48
SF	E 70-700-8400 Bond 1999 A&B CK	\$0.00	\$0.00	0.00%	\$0.00
SF	E 70-700-5000 Salaries	\$74,672.00	\$4,891.01	77.11%	\$17,088.79
SF	E 70-700-5051 Uniforms	\$1,300.00	\$189.42	52.69%	\$517.20
SF	E 70-700-5100 FICA	\$4,300.00	\$372.09	69.78%	\$1,299.41
SF	E 70-700-5200 Group Insurance	\$14,000.00	\$1,533.29	71.31%	\$4,017.12
SF	E 70-700-6011 Contract Labor	\$43,000.00	\$8,447.50	80.18%	\$8,502.50
SF	E 70-700-5400 Lagers	\$4,500.00	\$335.74	72.07%	\$1,257.04
SF	E 70-700-6500 Equipment Expense	\$7,000.00	\$0.00	100.00%	\$0.00
SF	E 70-700-6020 Audit Expense	\$3,000.00	\$0.00	100.00%	\$0.00
SF	E 70-700-6120 Dues & Subscriptions	\$3,500.00	\$1,500.00	42.97%	\$1,500.00
SF	E 70-700-6211 Professional Fees	\$30,000.00	\$4,026.55	53.37%	\$13,927.83
SF	E 70-700-6300 City Insurance	\$26,000.00	\$0.00	100.00%	\$0.00
SF	E 70-700-6321 Work Comp Insurance	\$1,500.00	\$0.00	-262.48%	\$5,437.24
SF	E 70-700-6450 Miscellaneous	\$0.00	\$0.00	0.00%	\$0.00
SF	E 70-700-5300 Unemployment	\$600.00	\$0.39	99.78%	\$1.32
Dept 700 Sewer		\$528,572.00	\$31,095.84	83.84%	\$84,082.08
Fund 70 Sewer Fund		\$528,572.00	\$31,095.84	83.84%	\$84,082.08
Act Type E Expenditure		\$2,068,730.80	\$127,537.86	79.66%	\$398,822.05

CITY OF CLEVER
FINANCIALS

10/12/22 3:00 PM
Page 8

Fund Abbrev	Account Descr	22-23 Budget	September 22-23 Amt	22-23 % of Budget Remain	22-23 YTD Amt
		\$4,066,830.80	\$295,036.28	69.08%	\$1,230,588.69

CITY OF CLEVER
***Paid Check Register**

10/12/22 2:57 PM
Page 1

September 22-23

Check	Search Name	Account	Invoice	Amount	Comments
000702E	9/26/2022 ANTHEM BLUE CROSS BL	G 70-2171 Accrued Health I	145854992	\$59.72	SEWER
000702E	9/26/2022 ANTHEM BLUE CROSS BL	G 60-2171 Accrued Health I	145854992	\$59.72	WATER
000702E	9/26/2022 ANTHEM BLUE CROSS BL	E 70-700-5200 Group Insura	145854992	\$913.96	
000702E	9/26/2022 ANTHEM BLUE CROSS BL	E 60-600-5200 Group Insura	145854992	\$913.96	
000703E	9/26/2022 DNS EQUIPMENT, LLC	E 70-700-6700 Supplies Exp	22-532	\$953.69	ALUM
000704E	9/26/2022 LAGERS	G 70-2165 Accrued LAGER	AUG 2022	\$186.84	
000704E	9/26/2022 LAGERS	G 60-2165 Accrued LAGER	AUG 2022	\$186.85	
000704E	9/26/2022 LAGERS	E 60-600-5400 Lagers	AUG 2022	\$168.17	
000704E	9/26/2022 LAGERS	E 70-700-5400 Lagers	AUG 2022	\$168.17	
000705E	9/26/2022 OZARK ELECTRIC	E 70-700-6900 Utilities	8/12-9/12	\$136.81	BRIARS L/S
000705E	9/26/2022 OZARK ELECTRIC	E 70-700-6900 Utilities	8/12-9/12	\$111.29	KINGSGATE L/S
000706E	9/26/2022 SPIRE	E 60-600-6900 Utilities	8/2-9/1	\$35.90	GAS BILL
000706E	9/26/2022 SPIRE	E 70-700-6900 Utilities	8/2-9/1	\$35.91	GAS BILL
000707E	9/26/2022 MISSOURI EMPLOYERS M	E 60-600-6321 Work Comp	300427608	\$1,236.00	
000708E	9/30/2022 CITY OF CLEVER	E 70-700-7000 Bond Transf	SEPT22	\$2,250.00	2003 RESRV
000708E	9/30/2022 CITY OF CLEVER	E 60-600-7000 Bond Transf	SEPT22	\$2,250.00	2022 BOND RESR
000709E	9/16/2022 FLEET SERVICES	E 60-600-6901 Vehicle Gas	83474365	\$308.45	
000709E	9/16/2022 FLEET SERVICES	E 70-700-6901 Vehicle Gas	83474365	\$308.44	
000710E	9/26/2022 ANTHEM BLUE CROSS BL	E 10-100-5200 Group Insura	145854992	\$246.61	
000710E	9/26/2022 ANTHEM BLUE CROSS BL	G 10-2171 Accrued Health I	145854992	\$716.67	POLICE
000710E	9/2/2022 OZARK ELECTRIC	E 70-700-6900 Utilities	07/12-08/12	\$104.63	KINGSGATE LS
000710E	9/26/2022 ANTHEM BLUE CROSS BL	G 10-2171 Accrued Health I	145854992	\$95.56	ADMIN
000710E	9/26/2022 ANTHEM BLUE CROSS BL	E 10-200-5200 Group Insura	145854992	\$2,829.34	
000710E	9/26/2022 ANTHEM BLUE CROSS BL	G 10-2171 Accrued Health I	145854992	\$23.89	COURT
000710E	9/2/2022 OZARK ELECTRIC	E 70-700-6900 Utilities	07/12-08/12	\$125.24	BRIARS LS
000710E	9/26/2022 ANTHEM BLUE CROSS BL	E 10-300-5200 Group Insura	145854992	\$61.65	
000711E	9/26/2022 LAGERS	G 10-2165 Accrued LAGER	AUG 22	\$793.48	
000711E	9/26/2022 LAGERS	G 10-2165 Accrued LAGER	AUG 22	\$15.04	
000711E	9/26/2022 LAGERS	G 10-2165 Accrued LAGER	AUG 22	\$168.83	
000711E	9/26/2022 LAGERS	E 10-300-5400 Lagers	AUG 22	\$13.54	
000711E	9/26/2022 LAGERS	E 10-200-5400 Lagers	AUG 22	\$805.48	
000711E	9/26/2022 LAGERS	E 10-100-5400 Lagers	AUG 22	\$151.95	
000712E	9/26/2022 PAYROLL TAXES	G 10-2125 Accrued Medicar	9-22/3Q/2P	\$543.58	
000712E	9/26/2022 PAYROLL TAXES	G 10-2130 Accrued Federal	9-22/3Q/2P	\$1,373.12	
000712E	9/26/2022 PAYROLL TAXES	G 10-2120 Accrued FICA	9-22/3Q/2P	\$2,324.16	
000713E	9/26/2022 PAYROLL TAXES	G 10-2120 Accrued FICA	9-22/3Q/1P	\$2,352.86	
000713E	9/26/2022 PAYROLL TAXES	G 10-2125 Accrued Medicar	9-22/3Q/1P	\$550.24	
000713E	9/26/2022 PAYROLL TAXES	G 10-2160 Accrued Federal	9-22/3Q/1P	\$1,598.06	
000714E	9/26/2022 SPIRE	E 10-100-6900 Utilities	8/2-9/1	\$10.54	GAS BILL
000714E	9/26/2022 SPIRE	E 10-200-6900 Utilities	8/2-9/1	\$43.21	GAS BILL
000715E	9/26/2022 VERIZON	E 10-200-6800 Telephone	9914444455	\$295.55	CELL PHONE
000716E	9/16/2022 FLEET SERVICES	E 10-200-6901 Vehicle Gas	83474365	\$2,088.25	VEHICLE FUEL
002534	9/1/2022 DEPARTMENT OF REVENUE	E 50-300-6760 Fines & Forf	2534	\$234.44	COURT AUTO FUND
002535	9/1/2022 CITY OF CLEVER	E 50-300-6760 Fines & Forf	2535	\$4,299.28	FINE & COST
002536	9/1/2022 CHRISTINA SWOPES	E 50-300-6760 Fines & Forf	2536	\$500.00	200641050 - BOND
002537	9/1/2022 DEPARTMENT OF REVENUE	E 50-300-6760 Fines & Forf	2537	\$238.79	CVC
002538	9/1/2022 POST FUND	E 50-300-6760 Fines & Forf	2538	\$33.49	POST FUND
002539	9/29/2022 CITY OF CLEVER	E 50-300-6760 Fines & Forf	2539	\$2,602.38	FINE & COST
002540	9/29/2022 DEPARTMENT OF REVENUE	E 50-300-6760 Fines & Forf	2540	\$241.56	COURT AUTO FUND
002541	9/29/2022 DEPARTMENT OF REVENUE	E 50-300-6760 Fines & Forf	2541	\$246.05	CVC
002542	9/29/2022 POST FUND	E 50-300-6760 Fines & Forf	2542	\$34.51	POST FUND

CITY OF CLEVER

10/12/22 2:57 PM

Page 2

*Paid Check Register

September 22-23

Check	Search Name	Account	Invoice	Amount	Comments
013865	6/14/2022 CHARLES SMITH	E 60-600-5450 Utility Deposi	1900	-\$120.00	326 W CHEROKEE PATH
013977	9/6/2022 ALLIED WASTE	E 60-600-6810 Trash Servic	AUG 2022	\$14,196.89	TRASH SERVICE
013978	9/6/2022 ANTHEM EAP	E 70-700-5200 Group Insura	433289095030	\$3.23	EAP
013978	9/6/2022 ANTHEM EAP	E 60-600-5200 Group Insura	433289095030	\$3.23	EAP
013979	9/6/2022 ATLAS SECURITY	E 70-700-6800 Telephone	R 107608	\$47.20	HWY 14 L/S MONITORING
013979	9/6/2022 ATLAS SECURITY	E 70-700-6800 Telephone	R 109971	\$13.11	CITY HALL MONITORING
013979	9/6/2022 ATLAS SECURITY	E 60-600-6800 Telephone	R 107608	\$47.20	WELL 2 MONITORING
013979	9/6/2022 ATLAS SECURITY	E 70-700-6800 Telephone	R 107608	\$47.20	WWTP MONITORING
013979	9/6/2022 ATLAS SECURITY	E 60-600-6800 Telephone	R 109971	\$13.11	CITY HALL MONITORING
013980	9/6/2022 BANYON DATA SYSTEMS, IE	70-700-6211 Professional	163107	\$484.71	TIMECARD ENTRY MODUL
013980	9/6/2022 BANYON DATA SYSTEMS, IE	60-600-6211 Professional	163107	\$484.72	TIMECARD ENTRY MODUL
013981	9/6/2022 CHEYENNE LOUDERBACK	E 60-600-5450 Utility Deposi	1996	\$29.25	418 S KENNEDY
013982	9/6/2022 CLEAN STREAM ENTERPRISE	70-700-6011 Contract Lab	6544	\$2,800.00	WWTP CONTRACT - AUG
013982	9/6/2022 CLEAN STREAM ENTERPRISE	70-700-6011 Contract Lab	6538	\$2,800.00	WWTP CONTRACT - JULY
013982	9/6/2022 CLEAN STREAM ENTERPRISE	70-700-6011 Contract Lab	6528	\$2,800.00	WWTP CONTRACT - JUNE
013983	9/6/2022 CROSSROADS COFFEE C	E 60-600-5450 Utility Deposi	951	\$78.13	310 S CLARKE AVE
013984	9/6/2022 EMPIRE ELECTRIC	E 60-600-6900 Utilities	7/22-8/22	\$175.33	WATER MAINT BLD
013984	9/6/2022 EMPIRE ELECTRIC	E 70-700-6900 Utilities	7/22-8/22	\$33.49	KENNEDY L/S
013984	9/6/2022 EMPIRE ELECTRIC	E 70-700-6900 Utilities	7/22-8/22	\$2,260.63	WWTP
013984	9/6/2022 EMPIRE ELECTRIC	E 60-600-6900 Utilities	7/22-8/22	\$2,072.22	WELL ON BROWN ST
013984	9/6/2022 EMPIRE ELECTRIC	E 70-700-6900 Utilities	7/22-8/22	\$43.17	WILLARD/DRIVE L/S
013984	9/6/2022 EMPIRE ELECTRIC	E 60-600-6900 Utilities	7/22-8/22	\$75.18	CITY HALL
013984	9/6/2022 EMPIRE ELECTRIC	E 70-700-6900 Utilities	7/22-8/22	\$75.18	CITY HALL
013984	9/6/2022 EMPIRE ELECTRIC	E 70-700-6900 Utilities	7/22-8/22	\$22.89	HWY 14 L/S LIGHT
013984	9/6/2022 EMPIRE ELECTRIC	E 70-700-6900 Utilities	7/22-8/22	\$271.35	WWTP L/S
013984	9/6/2022 EMPIRE ELECTRIC	E 70-700-6900 Utilities	7/22-8/22	\$237.25	HWY 14 L/S
013984	9/6/2022 EMPIRE ELECTRIC	E 60-600-6900 Utilities	7/22-8/22	\$2,344.56	WELL ON PUBLIC
013984	9/6/2022 EMPIRE ELECTRIC	E 60-600-6900 Utilities	7/22-8/22	\$80.68	WATER TOWER KENNEDY
013985	9/6/2022 GLOBEL LIFE	G 60-2171 Accrued Health I	SEPT 2022	\$36.25	SUP INS
013985	9/6/2022 GLOBEL LIFE	G 70-2171 Accrued Health I	SEPT 2022	\$36.25	SUP INS
013986	9/6/2022 JEREMY WATSON	E 60-600-5450 Utility Deposi	1378	\$19.77	112 N PUBLIC AVE
013987	9/6/2022 LADEANA BURTON	E 60-600-5450 Utility Deposi	3931	\$41.69	609 A KIMBERLY COURT
013988	9/6/2022 LAKE LAND OFFICE SYSTEMS	E 70-700-6960 Office Suppli	IN445599	\$12.02	COPIER CONTRACT
013988	9/6/2022 LAKE LAND OFFICE SYSTEMS	E 60-600-6960 Office Suppli	IN445599	\$12.02	COPIER CONTRACT
013989	9/6/2022 MELISSA EVANS	E 60-600-5450 Utility Deposi	861	\$16.99	703 W LEXINGTON CR
013990	9/6/2022 MMET, INC.	E 70-700-6700 Supplies Exp	143538	\$29.75	TESTING
013990	9/6/2022 MMET, INC.	E 70-700-6700 Supplies Exp	143506	\$488.75	TESTING
013990	9/6/2022 MMET, INC.	E 70-700-6700 Supplies Exp	143477	\$29.75	TESTING
013991	9/6/2022 MO ONE CALL	E 70-700-6011 Contract Lab	2080141	\$47.50	LOCATES
013991	9/6/2022 MO ONE CALL	E 60-600-6011 Contract Lab	2080141	\$47.50	LOCATES
013992	9/6/2022 NIXA HARDWARE	E 70-700-6700 Supplies Exp	493499	\$217.68	WEEDKILLER
013993	9/6/2022 OREILLY AUTO PARTS	E 60-600-6350 Vehicle Rep	5225-246482	\$7.99	OIL
013993	9/6/2022 OREILLY AUTO PARTS	E 60-600-6350 Vehicle Rep	5225-246228	\$53.95	FREON-HOSE-OIL
013994	9/6/2022 POSTMASTER	E 70-700-6550 Postage Exp	SEPT 2022	\$210.32	UTILITY BILLS
013994	9/6/2022 POSTMASTER	E 60-600-6550 Postage Exp	SEPT 2022	\$210.32	UTILITY BILLS
013995	9/6/2022 RYAN & TIFFANY WARD	E 60-600-5450 Utility Deposi	2224	\$12.84	704 W LEXINGTON CR
013996	9/6/2022 SHAFFER & HINES	E 70-700-6211 Professional	7-215003	\$572.83	FACILITY PLAN COMPLETI
013996	9/6/2022 SHAFFER & HINES	E 70-700-6211 Professional	4-225003	\$2,468.25	TECH SPEC BOOK
013997	9/6/2022 SHOW ME CHRISTIAN COUE	70-700-6120 Dues & Subc	1270	\$1,500.00	ECONOMIC INVESTMENT
013997	9/6/2022 SHOW ME CHRISTIAN COUE	60-600-6120 Dues & Subc	1270	\$1,500.00	ECONOMIC INVESTMENT
013998	9/6/2022 SPRINGFIELD WINWATER	E 60-600-6620 Repairs & M	330316 01	\$144.00	TRAFFIC REPAIR KIT

CITY OF CLEVER
***Paid Check Register**

10/12/22 2:57 PM
Page 3

September 22-23

Check	Search Name	Account	Invoice	Amount	Comments
013999	9/6/2022 UNIFIRST CORP	E 70-700-5051 Uniforms	1860005843	\$91.64	UNIFORMS
013999	9/6/2022 UNIFIRST CORP	E 60-600-5051 Uniforms	1860007215	\$166.53	UNIFORMS
014000	9/23/2022 ADVANTICA	G 70-2171 Accrued Health I	OCT 2022	\$14.67	VISION-SEWER
014000	9/23/2022 ADVANTICA	G 60-2171 Accrued Health I	OCT 2022	\$14.67	VISION-WATER
014001	9/23/2022 AMBER JOHNSON	E 60-600-5450 Utility Deposi	2371	\$10.77	104 E CANON
014002	9/23/2022 AT&T	E 60-600-6800 Telephone	SEPT 2022	\$53.00	AUTO DIALERS
014003	9/23/2022 CABLE AMERICA	E 60-600-6800 Telephone	9/15-10/14	\$118.92	PHONE & INTERNET
014003	9/23/2022 CABLE AMERICA	E 70-700-6800 Telephone	9/15-10/14	\$118.92	PHONE & INTERNET
014004	9/23/2022 CHARLES & ROBERTA RID	E 60-600-5450 Utility Deposi	876	\$12.58	406 S PUBLIC
014005	9/23/2022 CHARLES SMITH	E 60-600-5450 Utility Deposi	1900	\$120.00	326 W CHEROKEE PATH
014006	9/23/2022 CHRISTIAN COUNTY ELEC	E 60-600-6211 Professional	AUG 2022	\$435.66	2022 BOND ISSUE
014006	9/23/2022 CHRISTIAN COUNTY ELEC	E 70-700-6211 Professional	AUG 2022	\$435.65	2022 BOND ISSUE
014007	9/23/2022 DAVID & SARAH WILLIAMS	E 60-600-5450 Utility Deposi	1375	\$60.00	111 E CANON
014008	9/23/2022 DNR	E 60-600-6290 Primacy Pay	34602301508	\$1,228.92	SEWER CONNECTION FE
014009	9/23/2022 DUSTIN ARBUCKLE	E 60-600-5450 Utility Deposi	2041	\$120.00	233 EAGLE CR
014010	9/23/2022 FAITH & BRYSTON MCHOL	E 60-600-5450 Utility Deposi	1325	\$15.22	324 W CHEROKEE PATH
014011	9/23/2022 FRANK & SHERRIL NAAF	E 60-600-5450 Utility Deposi	2894	\$82.09	707 W OSAGE
014012	9/23/2022 LISA GREGG	E 60-600-6950 Cleaning	691981	\$25.00	CLEANING
014012	9/23/2022 LISA GREGG	E 70-700-6950 Cleaning	691980	\$25.00	CLEANING
014013	9/23/2022 LOWES	E 70-700-6620 Repairs & M	AUG 2022	\$122.47	
014014	9/23/2022 MELISSA PETERSON	E 60-600-5450 Utility Deposi	3901	\$73.20	608B MORGAN CRT
014015	9/23/2022 MIRIAH PERKINS	E 60-600-5450 Utility Deposi	2836	\$67.24	582 CLEVER HEIGHTS
014016	9/23/2022 MMET, INC.	E 70-700-6700 Supplies Exp	143628	\$164.90	TESTING
014016	9/23/2022 MMET, INC.	E 70-700-6700 Supplies Exp	143615	\$29.75	TESTING
014016	9/23/2022 MMET, INC.	E 70-700-6700 Supplies Exp	143670	\$29.75	TESTING
014017	9/23/2022 MYLES GARAGE DOORS	E 60-600-6620 Repairs & M	5425	\$200.00	MAINT SHOP DOOR REPAI
014018	9/23/2022 OREILLY AUTO PARTS	E 60-600-6350 Vehicle Rep	5225-248984	\$22.98	COOLANT - F150
014019	9/23/2022 PEARSON-KELLY	E 60-600-6503 Capital-Equi	329706	\$637.50	M3655idn
014019	9/23/2022 PEARSON-KELLY	E 60-600-6960 Office Suppli	330961	\$13.13	COPIER CONTRACT
014019	9/23/2022 PEARSON-KELLY	E 70-700-6503 Capital-Equi	329706	\$637.50	M3655idn
014019	9/23/2022 PEARSON-KELLY	E 70-700-6960 Office Suppli	331268	\$13.13	COPIER CONTRACT
014019	9/23/2022 PEARSON-KELLY	E 60-600-6960 Office Suppli	331268	\$13.13	COPIER CONTRACT
014019	9/23/2022 PEARSON-KELLY	E 70-700-6960 Office Suppli	330961	\$13.13	COPIER CONTRACT
014020	9/23/2022 POSTMASTER	E 70-700-6550 Postage Exp	9/22 DEL	\$44.00	SEPT 2022 DELINQ
014020	9/23/2022 POSTMASTER	E 60-600-6550 Postage Exp	9/22 DEL	\$44.00	SEPT 2022 DELINQ
014021	9/23/2022 SAMUEL & MARIAH WOOD	E 60-600-5450 Utility Deposi	2059	\$60.00	309 N CHEYENNE
014022	9/23/2022 SPRINGFIELD WINWATER	E 60-600-6620 Repairs & M	330606 01	\$576.70	FLG KITS
014023	9/23/2022 STATE FARM LIFE INSURA	E 70-700-5200 Group Insura	OCT 2022	\$15.68	LIFE INSURANCE.
014023	9/23/2022 STATE FARM LIFE INSURA	E 60-600-5200 Group Insura	OCT 2022	\$15.68	LIFE INSURANCE
014024	9/23/2022 UNIFIRST CORP	E 70-700-5051 Uniforms	1860009317	\$97.78	UNIFORMS
014024	9/23/2022 UNIFIRST CORP	E 60-600-5051 Uniforms	1860008376	\$97.78	UNIFORMS
014025	9/23/2022 VERNON & MILDRED VAND	E 60-600-5450 Utility Deposi	4031	\$85.09	509 CAMELLA LANE
014026	9/23/2022 VISA CARD ADMIN	E 70-700-6211 Professional	AUG 2022	\$65.11	
014026	9/23/2022 VISA CARD ADMIN	E 60-600-6211 Professional	AUG 2022	\$73.37	
014026	9/23/2022 VISA CARD ADMIN	E 70-700-6550 Postage Exp	AUG 2022	\$75.00	
014026	9/23/2022 VISA CARD ADMIN	E 70-700-6700 Supplies Exp	AUG 2022	\$291.80	
014026	9/23/2022 VISA CARD ADMIN	E 60-600-6620 Repairs & M	AUG 2022	\$35.00	
014026	9/23/2022 VISA CARD ADMIN	E 60-600-5500 Conference	AUG 2022	\$168.75	
014026	9/23/2022 VISA CARD ADMIN	E 60-600-6550 Postage Exp	AUG 2022	\$75.00	
014026	9/23/2022 VISA CARD ADMIN	E 70-700-5500 Conference	AUG 2022	\$168.75	
017621	6/1/2022 N & F TRAINING SOLUTION	E 10-200-5500 Conference	052722	-\$450.00	HIGH - ACTIVE SHOOTER

CITY OF CLEVER
***Paid Check Register**

10/12/22 2:57 PM
Page 4

September 22-23

Check	Search Name	Account	Invoice	Amount	Comments
017700	9/6/2022 ALL PHASE ELECTRIC	E 10-100-6011 Contract Lab	22414	\$30.00	PRE-INSPECTIONS - 310 S
017700	9/6/2022 ALL PHASE ELECTRIC	E 10-100-6011 Contract Lab	22414	\$30.00	INSPECTIONS - 22-0005
017701	9/6/2022 ANTHEM EAP	E 10-200-5200 Group Insura	433289095030	\$7.96	EAP
017701	9/6/2022 ANTHEM EAP	E 10-300-5200 Group Insura	433289095030	\$0.20	EAP
017701	9/6/2022 ANTHEM EAP	E 10-100-5200 Group Insura	433289095030	\$1.30	EAP
017702	9/6/2022 ATLAS SECURITY	E 10-100-6800 Telephone	R 109971	\$8.76	CITY HALL MONITORING
017702	9/6/2022 ATLAS SECURITY	E 10-200-6800 Telephone	R 109929	\$34.95	POLICE DEPT MONITORIN
017703	9/6/2022 BANYON DATA SYSTEMS, IE	E 10-100-6211 Professional	163107	\$969.45	TIMECARD ENTRY MODUL
017703	9/6/2022 BANYON DATA SYSTEMS, IE	E 10-200-6211 Professional	163107	\$1,551.12	TIMECARD ENTRY MODUL
017704	9/6/2022 CABLE AMERICA	E 10-200-6800 Telephone	9/1-9/30	\$293.48	PHONE & INTERNET
017705	9/6/2022 EMPIRE ELECTRIC	E 10-100-6900 Utilities	7/22-8/22	\$50.12	CITY HALL
017705	9/6/2022 EMPIRE ELECTRIC	E 10-200-6900 Utilities	7/22-8/22	\$362.59	PD
017706	9/6/2022 GLOBEL LIFE	G 10-2171 Accrued Health I	SEPT 2022	\$41.62	SUP INS
017707	9/6/2022 LAKELAND OFFICE SYSTE	E 10-100-6960 Office Suppli	IN445599	\$8.00	COPIER CONTRACT
017707	9/6/2022 LAKELAND OFFICE SYSTE	E 10-200-6960 Office Suppli	IN446362	\$28.23	COPIER CONTRACT
017708	9/6/2022 LISA GREGG	E 10-100-6950 Cleaning	691979	\$25.00	CLEANING
017709	9/6/2022 OREILLY AUTO PARTS	E 10-200-6350 Vehicle Rep	5225-246931	\$54.14	CAPSULE - 802
017710	9/6/2022 REJIS COMMISSION	E 10-200-6211 Professional	490442	\$17.50	REPORT SYSTEM
017710	9/6/2022 REJIS COMMISSION	E 10-200-6211 Professional	482968	\$63.00	REPORT SYSTEM
017710	9/6/2022 REJIS COMMISSION	E 10-200-6211 Professional	482491	\$47.50	REPORT SYSTEM
017710	9/6/2022 REJIS COMMISSION	E 10-200-6211 Professional	490918	\$368.36	REPORT SYSTEM
017711	9/6/2022 SHOW ME CHRISTIAN COU	E 10-100-6120 Dues & Subc	1270	\$2,000.00	ECONOMIC INVESTMENT
017712	9/23/2022 A-1 CUSTOM	E 10-200-6350 Vehicle Rep	3-100022	\$129.85	2018 CHARGER - WIRING I
017712	9/23/2022 A-1 CUSTOM	E 10-200-6350 Vehicle Rep	3-99804	\$174.94	1801 - 2013 TAHOE - OIL C
017713	9/23/2022 ADVANTICA	G 10-2171 Accrued Health I	OCT 2022	\$36.71	VISION-PD
017713	9/23/2022 ADVANTICA	G 10-2171 Accrued Health I	OCT 2022	\$5.95	VISION-ADMIN
017713	9/23/2022 ADVANTICA	G 10-2171 Accrued Health I	OCT 2022	\$1.49	VISION-COURT
017714	9/23/2022 ALICIA ROBERTSON	E 10-200-5500 Conference	092022	\$293.62	POLICE CLERK TRAINING
017715	9/23/2022 CABLE AMERICA	E 10-100-6800 Telephone	9/15-10/14	\$79.26	PHONE & INTERNET
017716	9/23/2022 DOUBLE EAGLE TOWNING	E 10-200-6350 Vehicle Rep	090722	\$80.00	1803 - TOW TO SHOP
017717	9/23/2022 LISA GREGG	E 10-200-6950 Cleaning	691980	\$35.00	CLEANING
017718	9/23/2022 PEARSON-KELLY	E 10-100-6503 Capital-Equi	329706	\$425.00	COPIER - M3655idn
017718	9/23/2022 PEARSON-KELLY	E 10-100-6960 Office Suppli	331268	\$8.74	COPIER CONTRACT
017718	9/23/2022 PEARSON-KELLY	E 10-100-6960 Office Suppli	330961	\$8.74	COPIER CONTRACT
017719	9/23/2022 PHILLIPS MEDIA GROUP, L	E 10-100-6000 Advertising	140809	\$53.04	SATTERLEE SPLIT
017720	9/23/2022 REJIS COMMISSION	E 10-200-6211 Professional	492439	\$34.00	REPORT SYSTEM
017721	9/23/2022 STATE FARM LIFE INSURA	E 10-300-5200 Group Insura	OCT 2022	\$0.93	LIFE INSURANCE
017721	9/23/2022 STATE FARM LIFE INSURA	E 10-100-5200 Group Insura	OCT 2022	\$5.70	LIFE INSURANCE
017721	9/23/2022 STATE FARM LIFE INSURA	E 10-200-5200 Group Insura	OCT 2022	\$66.50	LIFE INSURANCE
017722	9/23/2022 STYRON LAW FIRM	E 10-100-6211 Professional	27589	\$525.00	SEPT 2022 COURT
017723	9/23/2022 VISA CARD ADMIN	E 10-100-6211 Professional	AUG 2022	\$20.80	
017723	9/23/2022 VISA CARD ADMIN	E 10-100-5500 Conference	AUG 2022	\$112.50	MML CONF
017723	9/23/2022 VISA CARD ADMIN	E 10-100-6550 Postage Exp	AUG 2022	\$89.94	
017723	9/23/2022 VISA CARD ADMIN	E 10-200-6211 Professional	AUG 2022	\$50.96	
017724	9/23/2022 VISA CARD POLICE	E 10-200-6960 Office Suppli	AUG 2022	\$179.88	ADOBE
017724	9/23/2022 VISA CARD POLICE	E 10-200-6211 Professional	AUG 2022	\$75.00	
017724	9/23/2022 VISA CARD POLICE	E 10-200-5500 Conference	AUG 2022	\$441.15	
017724	9/23/2022 VISA CARD POLICE	E 10-200-5500 Conference	AUG 2022	-\$34.05	
017724	9/23/2022 VISA CARD POLICE	E 10-200-6700 Supplies Exp	AUG 2022	\$227.00	
017724	9/23/2022 VISA CARD POLICE	E 10-200-6960 Office Suppli	AUG 2022	\$62.50	MICROSOFT 365
017724	9/23/2022 VISA CARD POLICE	E 10-200-6700 Supplies Exp	AUG 2022	\$53.49	

CITY OF CLEVER
***Paid Check Register**

10/12/22 2:57 PM
Page 5

September 22-23

Check	Search Name	Account	Invoice	Amount	Comments
017724	9/23/2022 VISA CARD POLICE	E 10-200-6350 Vehicle Rep	AUG 2022	\$41.78	
017725	9/30/2022 MISSOURI STATE WITHHO	G 10-2140 Accrued State W		\$455.66	
017725	9/30/2022 MISSOURI STATE WITHHO	G 10-2140 Accrued State W		\$389.10	
0000522	9/6/2022 EMPIRE ELECTRIC -STREE	E 20-400-6902 Street Lighti	7/22-8/22	\$1,088.24	STREET LIGHTING
0000523	9/6/2022 TOWN & COUNTRY POWE	E 20-400-6620 Repairs & M	106866	\$263.29	MOWER PARTS
Grand Total				<u>\$93,383.72</u>	

CITY OF CLEVER

RECEIPTS JOURNAL-COUNCIL

10/12/22 2:58 PM
Page 1

Amount	Tran Date	Refer	Comments	Batch Name	Account Descr
FUND 10 General Fund					
PL Type *R Revenue					
Tran Date 9/26/2022					
\$5.00	9/26/2022	920	CP22-0006	092622ADMC	R 10-100-40000 Charge for Service
\$5.00					
Tran Date 9/27/2022					
\$5.00	9/27/2022	833	CP22-0005 201 S MITCHELL	092222ADMC	R 10-100-40000 Charge for Service
\$5.00					
\$10.00					
Tran Date 9/6/2022					
\$193.00	9/6/2022	955	BP22-0024 JJ PROPANE	090622ADMC	R 10-100-40020 Build Permit-Plan Rev-
\$193.00					
Tran Date 9/13/2022					
\$40.00	9/13/2022	-4	BP22-0026 101 S CLARKE	091422POS	R 10-100-40020 Build Permit-Plan Rev-
\$81.13	9/13/2022	-4	BP22-0026 101 S CLARKE	091422POS	R 10-100-40020 Build Permit-Plan Rev-
\$25.00	9/13/2022	-4	BP22-0026 101 S CLARKE	091422POS	R 10-100-40020 Build Permit-Plan Rev-
\$146.13					
Tran Date 9/15/2022					
\$7.00	9/15/2022	-26	BP22-0027 101 W BROWN	091622POS	R 10-100-40020 Build Permit-Plan Rev-
\$20.00	9/15/2022	-26	BP22-0027 101 W BROWN	091622POS	R 10-100-40020 Build Permit-Plan Rev-
\$25.00	9/15/2022	-26	BP22-0027 101 W BROWN	091622POS	R 10-100-40020 Build Permit-Plan Rev-
\$52.00					
Tran Date 9/23/2022					
\$45.00	9/23/2022	923	FP22-0020	092322	R 10-100-40020 Build Permit-Plan Rev-
\$45.00					
Tran Date 9/27/2022					
\$25.00	9/27/2022	892	BP22-0025 515 W RICE	090622ADMC	R 10-100-40020 Build Permit-Plan Rev-
\$193.00	9/27/2022	905	BP22-0024 JJ PROPANE	090122ADMC	R 10-100-40020 Build Permit-Plan Rev-
\$218.00					
Tran Date 10/12/2022					
-\$193.00	10/12/2022	905	BP22-0024 JJ PROPANE	090122ADMC	R 10-100-40020 Build Permit-Plan Rev-
-\$193.00					
\$461.13					
Tran Date 9/27/2022					
\$21,785.56	9/27/2022	827	DOR SALES TAX	SEPT 22 ST	R 10-100-42000 MoDOR Sales Tax
\$21,785.56					
\$21,785.56					
Tran Date 9/6/2022					
\$434.78	9/6/2022	-57	PROPERTY TAX	09062022	R 10-100-42010 County Property Tax
\$434.78					
\$434.78					
Tran Date 9/27/2022					
\$7,813.51	9/27/2022	828	USE TAX	SEPT 22 ST	R 10-100-42030 Use Tax
\$7,813.51					

CITY OF CLEVER

RECEIPTS JOURNAL-COUNCIL

10/12/22 2:58 PM
Page 2

Amount	Tran Date	Refer	Comments	Batch Name	Account Descr
\$7,813.51					
Tran Date 9/6/2022					
\$75.00	9/6/2022	-56	UTILITY FRANCHISE FEE	09062022	R 10-100-42500 Electric Franchise
\$75.00					
Tran Date 9/8/2022					
\$2,854.89	9/8/2022	-32	UTILITY FRANCHISE FEE	090822ADM	R 10-100-42500 Electric Franchise
\$2,854.89					
\$2,929.89					
Tran Date 9/1/2022					
\$300.00	9/1/2022	-72	COMM. FRANCHISE FEE	090222ADM	R 10-100-42510 Communication Franc
\$300.00					
\$300.00					
Tran Date 9/27/2022					
\$3,612.12	9/27/2022	860	LIBERTY	09-22 LIB	R 10-100-43100 Utility Tax
\$3,612.12					
\$3,612.12					
Tran Date 9/27/2022					
\$6,070.04	9/27/2022	831		SEPT22 MVF	R 10-100-44600 Motor Vehicle Fuel Ta
\$6,070.04					
\$6,070.04					
Tran Date 9/27/2022					
\$1,015.03	9/27/2022	831		SEPT22 MVF	R 10-100-44700 Motor Vehicle Fee Incr
\$1,015.03					
\$1,015.03					
Tran Date 9/27/2022					
\$2,395.99	9/27/2022	831		SEPT22 MVF	R 10-100-44800 Motor Vehicle Sales T
\$2,395.99					
\$2,395.99					
Tran Date 9/19/2022					
\$25.00	9/19/2022	-49	EVERLAST STEEL CONSTRU	092022ADM	R 10-100-44900 Business License
\$25.00					
Tran Date 9/27/2022					
\$25.00	9/27/2022	851	OZARKS CUSTOM BUILDING	091622ADMC	R 10-100-44900 Business License
\$25.00	9/27/2022	839	ROBINSON FENCE	092122ADMC	R 10-100-44900 Business License
\$50.00					
\$75.00					
Tran Date 9/9/2022					
\$3,753.00	9/9/2022	-1	FINES & FORFEITURES	091222ADM	R 10-100-45950 Fines & Forfetures
\$12.39	9/9/2022	-1	FINES & FORFEITURES	091222ADM	R 10-100-45950 Fines & Forfetures
\$368.40	9/9/2022	-1	FINES & FORFEITURES	091222ADM	R 10-100-45950 Fines & Forfetures
\$4,133.79					
\$4,133.79					
Tran Date 9/9/2022					

CITY OF CLEVER RECEIPTS JOURNAL-COUNCIL

10/12/22 2:58 PM
Page 3

Amount	Tran Date	Refer	Comments	Batch Name	Account Descr
\$33.49	9/9/2022	-1	JUDICIAL EDUCATION	091222ADM	R 10-100-45960 Clerk/Judge Fee
\$33.49					
\$33.49					
Tran Date 9/1/2022					
\$20.00	9/1/2022	-67	SCOTT	090222ADM	R 10-100-47500 Dog License
\$5.00	9/1/2022	-71	HASEN #146	090222ADM	R 10-100-47500 Dog License
\$25.00					
Tran Date 9/23/2022					
\$10.00	9/23/2022	923	149 150	092322	R 10-100-47500 Dog License
\$10.00					
Tran Date 9/26/2022					
\$15.00	9/26/2022	920	151 152 153 BOOTH	092622ADMC	R 10-100-47500 Dog License
\$15.00					
Tran Date 9/27/2022					
\$5.00	9/27/2022	900	JESTER #147	090222ADMC	R 10-100-47500 Dog License
\$5.00					
\$55.00					
Tran Date 9/30/2022					
\$51.67	9/30/2022	943	INTEREST	SEPT22 INT	R 10-100-48000 Interest Income
\$360.35	9/30/2022	950	INTEREST	SEPT22 INT	R 10-100-48000 Interest Income
\$143.78	9/30/2022	951	INTEREST	SEPT22 INT	R 10-100-48000 Interest Income
\$41.76	9/30/2022	952	INTEREST	SEPT22 INT	R 10-100-48000 Interest Income
\$597.56					
\$597.56					
Tran Date 9/6/2022					
\$2,617.37	9/6/2022	-58	ANTHEM REBATE	09062022	R 10-100-49000 Miscellaneous Income
\$2,617.37					
\$2,617.37					
Tran Date 9/13/2022					
\$5.00	9/13/2022	-27	POLICE REPORTS	091422POS	R 10-200-40000 Charge for Service
\$5.00	9/13/2022	-28	POLICE REPORTS	091422POS	R 10-200-40000 Charge for Service
\$10.00					
\$10.00					
Tran Date 9/9/2022					
\$66.00	9/9/2022	-1	INMATE SECURITY FUND	091222ADM	R 10-200-45970 Inmate Security Fund
\$66.00					
\$66.00					
Tran Date 9/9/2022					
\$66.00	9/9/2022	-1	LET - MUNICIPAL	091222ADM	R 10-200-46000 LET-Officer Training
\$66.00					
\$66.00					
Tran Date 9/7/2022					
\$246.75	9/7/2022	-5	JULY 4TH DWI	090722ADM	R 10-200-48020 Grant Fund Revenue
\$246.75					

CITY OF CLEVER

RECEIPTS JOURNAL-COUNCIL

10/12/22 2:58 PM
Page 4

Amount	Tran Date	Refer	Comments	Batch Name	Account Descr
Tran Date 9/28/2022					
\$500.00	9/28/2022	931	2022 POST	092822ADM1	R 10-200-48020 Grant Fund Revenue
\$500.00					
Tran Date 9/29/2022					
\$5,952.40	9/29/2022	930	E-CITATION	092822ADM	R 10-200-48020 Grant Fund Revenue
\$5,952.40					
\$6,699.15					
Tran Date 9/13/2022					
\$150.00	9/13/2022	-29	OZARK JEEP THING	091422POS	R 10-200-48030 Donations
\$150.00					
\$150.00					
Tran Date 9/2/2022					
\$220.50	9/2/2022	-82	CANCELLED SRO TRAINING	090222ADM	R 10-200-49000 Miscellaneous Income
\$220.50					
\$220.50					
Tran Date 9/13/2022					
\$7,500.00	9/13/2022	-16	POLICE SRO	091422POS	R 10-200-49020 School Resource Offic
\$7,500.00					
\$7,500.00					
\$69,051.91					
\$69,051.91					
FUND 20 Street Improvements					
PL Type *R Revenue					
Tran Date 9/27/2022					
\$7,324.51	9/27/2022	829	TE TAX	SEPT 22 ST	R 20-400-41100 3/8% TE Sales Tax
\$7,324.51					
\$7,324.51					
\$7,324.51					
\$7,324.51					
FUND 50 Municipal Court					
PL Type *R Revenue					
Tran Date 8/29/2022					
\$82.00	8/29/2022	-23	220294978 MATTHEW JOHN	090222CRT	R 50-300-45950 Fines & Forfeitures
\$82.00					
Tran Date 9/2/2022					
\$182.00	9/2/2022	-36	220294969 RODNEY JONES	090222CRT	R 50-300-45950 Fines & Forfeitures
\$102.00	9/2/2022	-1	220192436 MATAMOROS RO	090722CRT	R 50-300-45950 Fines & Forfeitures
\$31.50	9/2/2022	-85	220192357 MICHELA BRIST	090722CRT	R 50-300-45950 Fines & Forfeitures
\$315.50					
Tran Date 9/6/2022					
\$157.00	9/6/2022	-31	220294921 AUSTIN AUSBUR	090722CRT	R 50-300-45950 Fines & Forfeitures
\$157.00					
Tran Date 9/14/2022					

CITY OF CLEVER

RECEIPTS JOURNAL-COUNCIL

10/12/22 2:58 PM
Page 5

Amount	Tran Date	Refer	Comments	Batch Name	Account Descr
\$50.00	9/14/2022	-34	220294938 MATTHEW CLAS	090222CRT	R 50-300-45950 Fines & Forfeitures
\$50.00					
Tran Date 9/16/2022					
\$92.00	9/16/2022	-45	220294977 MATTHEW JOHN	090222CRT	R 50-300-45950 Fines & Forfeitures
\$92.00					
Tran Date 9/19/2022					
\$57.00	9/19/2022	-48	220294895 KAYLEIGH GUYN	090222CRT	R 50-300-45950 Fines & Forfeitures
\$57.00					
Tran Date 9/22/2022					
\$60.00	9/22/2022	941	220294938 MATTHEW CLAS	092222 CRT	R 50-300-45950 Fines & Forfeitures
\$225.00	9/22/2022	941	220294991 MICHAEL CAREY	092222 CRT	R 50-300-45950 Fines & Forfeitures
\$225.00	9/22/2022	941	220295007 RAMIE BENNETT	092222 CRT	R 50-300-45950 Fines & Forfeitures
\$500.00	9/22/2022	941	220192360 SHIANNE CAWT	092222 CRT	R 50-300-45950 Fines & Forfeitures
\$1,010.00					
Tran Date 9/23/2022					
\$162.00	9/23/2022	934	220295038 CONNER SHULL	092322CRTPB	R 50-300-45950 Fines & Forfeitures
\$162.00					
Tran Date 9/25/2022					
\$92.00	9/25/2022	935	220294959 LISA MULLEN	092522PBE	R 50-300-45950 Fines & Forfeitures
\$92.00					
Tran Date 9/26/2022					
\$82.00	9/26/2022	936	220295004 JONATHAN COLE	092622PBW	R 50-300-45950 Fines & Forfeitures
\$82.00					
Tran Date 9/27/2022					
\$31.50	9/27/2022	914	220294909 KASSY MORRIS	090122CRTCC	R 50-300-45950 Fines & Forfeitures
\$250.00	9/27/2022	868	220192361 - CALEB CARTER	091422CRTBN	R 50-300-45950 Fines & Forfeitures
\$57.00	9/27/2022	867	220294972 - JOHN EBY	091222CRTCC	R 50-300-45950 Fines & Forfeitures
\$82.00	9/27/2022	866	220294955 CALEB CRANCE	090722CRTPB	R 50-300-45950 Fines & Forfeitures
\$82.00	9/27/2022	866	220294960 CALEB CRANCE	090722CRTPB	R 50-300-45950 Fines & Forfeitures
\$43.50	9/27/2022	914	220294911 KASSY MORRIS	090122CRTCC	R 50-300-45950 Fines & Forfeitures
\$57.00	9/27/2022	914	220294910 KASSY MORRIS	090122CRTCC	R 50-300-45950 Fines & Forfeitures
\$10.00	9/27/2022	890	220294996 GREGORY GOHL	090522CRTPB	R 50-300-45950 Fines & Forfeitures
\$57.00	9/27/2022	889	170386028 CHRISTOPHER Q	090222CRTPB	R 50-300-45950 Fines & Forfeitures
\$225.00	9/27/2022	869	220295039 - MELINDA VACE	091322CRTCC	R 50-300-45950 Fines & Forfeitures
\$56.50	9/27/2022	937	MICHAEL WARDLOW 160077	092722CRTPB	R 50-300-45950 Fines & Forfeitures
\$82.00	9/27/2022	902	220294933 DANIEL USUREL	090122CRTCC	R 50-300-45950 Fines & Forfeitures
\$82.00	9/27/2022	888	220294944 BRANDON BAKE	090222CRTCC	R 50-300-45950 Fines & Forfeitures
\$67.00	9/27/2022	889	200517251 CHRISTOPHER Q	090222CRTPB	R 50-300-45950 Fines & Forfeitures
\$132.00	9/27/2022	838	220192435 MAI LEE	091522CRTPB	R 50-300-45950 Fines & Forfeitures
\$10.00	9/27/2022	837	220294954 SCOTT CONBOY	092022CRTPB	R 50-300-45950 Fines & Forfeitures
\$225.00	9/27/2022	902	220192422 GAGE WISE	090122CRTCC	R 50-300-45950 Fines & Forfeitures
\$31.50	9/27/2022	902	220294908 GAGE WISE	090122CRTCC	R 50-300-45950 Fines & Forfeitures
\$132.00	9/27/2022	902	220192411 GAGE WISE	090122CRTCC	R 50-300-45950 Fines & Forfeitures
\$31.50	9/27/2022	902	220294986 SIERRA CRABB	090122CRTCC	R 50-300-45950 Fines & Forfeitures
\$40.00	9/27/2022	902	210546641 THOMASW WOL	090122CRTCC	R 50-300-45950 Fines & Forfeitures
\$31.50	9/27/2022	836	220295026 WYATT MELTON	091622CRTCC	R 50-300-45950 Fines & Forfeitures
\$3.50	9/27/2022	937	MICHAEL WARDLOW 160077	092722CRTPB	R 50-300-45950 Fines & Forfeitures
\$82.00	9/27/2022	903	220294993 BRITNEY SADLE	090122CRTPB	R 50-300-45950 Fines & Forfeitures

CITY OF CLEVER

RECEIPTS JOURNAL-COUNCIL

10/12/22 2:58 PM
Page 6

Amount	Tran Date	Refer	Comments	Batch Name	Account Descr
\$31.50	9/27/2022	902	220294892 CIARA NEHER	090122CRTCC	R 50-300-45950 Fines & Forfeitures
\$31.50	9/27/2022	902	220294934 DANIEL USUREL	090122CRTCC	R 50-300-45950 Fines & Forfeitures
\$1,964.50					
Tran Date 9/28/2022					
\$132.50	9/28/2022	938	220295069 LANDON ROGER	092822CRTCC	R 50-300-45950 Fines & Forfeitures
\$225.00	9/28/2022	939	220295063 JONATHAN NEAL	092622CRTCC	R 50-300-45950 Fines & Forfeitures
\$357.50					
\$4,421.50					
\$4,421.50					
\$4,421.50					
FUND 60 Water Fund					
PL Type *R Revenue					
Tran Date 9/1/2022					
\$2,111.96	9/1/2022	913	UB Receipt Serv 1 WATER	20220831AC0	R 60-600-40000 Charge for Service
\$20.70	9/1/2022	912	UB Receipt Serv 1 WATER	20220901E01	R 60-600-40000 Charge for Service
\$377.20	9/1/2022	911	UB Receipt Serv 1 WATER	20220901E00	R 60-600-40000 Charge for Service
\$135.68	9/1/2022	911	UB UR Receipt Group 01 ACT	20220901E00	R 60-600-40000 Charge for Service
\$2,645.54					
Tran Date 9/2/2022					
\$231.93	9/2/2022	906	UB Receipt Serv 1 WATER	20220902E00	R 60-600-40000 Charge for Service
\$39.49	9/2/2022	896	UB UR Receipt Group 01 ACT	2022090201	R 60-600-40000 Charge for Service
\$760.17	9/2/2022	896	UB Receipt Serv 1 WATER	2022090201	R 60-600-40000 Charge for Service
\$446.13	9/2/2022	907	UB Receipt Serv 1 WATER	20220902E01	R 60-600-40000 Charge for Service
\$485.27	9/2/2022	907	UB UR Receipt Group 01 ACT	20220902E01	R 60-600-40000 Charge for Service
\$1,962.99					
Tran Date 9/6/2022					
\$47.71	9/6/2022	898	UB UR Receipt Group 01 ACT	20220906E00	R 60-600-40000 Charge for Service
\$179.44	9/6/2022	887	UB UR Receipt Group 01 ACT	2022090601	R 60-600-40000 Charge for Service
-\$40.43	9/6/2022	887	UB Receipt Serv 1 WATER	2022090601	R 60-600-40000 Charge for Service
\$59.59	9/6/2022	897	UB UR Receipt Group 01 ACT	20220906E01	R 60-600-40000 Charge for Service
\$1,098.76	9/6/2022	898	UB Receipt Serv 1 WATER	20220906E00	R 60-600-40000 Charge for Service
\$1,190.11	9/6/2022	887	UB Receipt Serv 1 WATER	2022090601	R 60-600-40000 Charge for Service
\$28.72	9/6/2022	901	UB Receipt Serv 1 WATER	20220902A00	R 60-600-40000 Charge for Service
\$329.04	9/6/2022	897	UB Receipt Serv 1 WATER	20220906E01	R 60-600-40000 Charge for Service
\$2,892.94					
Tran Date 9/7/2022					
\$461.21	9/7/2022	881	UB Receipt Serv 1 WATER	2022090701	R 60-600-40000 Charge for Service
\$2.27	9/7/2022	881	UB UR Receipt Group 01 ACT	2022090701	R 60-600-40000 Charge for Service
\$857.87	9/7/2022	893	UB Receipt Serv 1 WATER	20220907E00	R 60-600-40000 Charge for Service
\$133.96	9/7/2022	894	UB Receipt Serv 1 WATER	20220907E01	R 60-600-40000 Charge for Service
\$1,455.31					
Tran Date 9/8/2022					
\$493.86	9/8/2022	879	UB Receipt Serv 1 WATER	2022090801	R 60-600-40000 Charge for Service
\$0.95	9/8/2022	886	UB UR Receipt Group 01 ACT	20220908E01	R 60-600-40000 Charge for Service
\$270.29	9/8/2022	885	UB Receipt Serv 1 WATER	20220908E00	R 60-600-40000 Charge for Service
\$163.02	9/8/2022	879	UB UR Receipt Group 01 ACT	2022090801	R 60-600-40000 Charge for Service
\$56.64	9/8/2022	886	UB Receipt Serv 1 WATER	20220908E01	R 60-600-40000 Charge for Service
\$16.33	9/8/2022	885	UB UR Receipt Group 01 ACT	20220908E00	R 60-600-40000 Charge for Service

CITY OF CLEVER

RECEIPTS JOURNAL-COUNCIL

10/12/22 2:58 PM
Page 7

Amount	Tran Date	Refer	Comments	Batch Name	Account Descr
\$1,001.09					
Tran Date 9/12/2022					
\$1,311.00	9/12/2022	883	UB Receipt Serv 1 WATER	20220912E00	R 60-600-40000 Charge for Service
\$113.34	9/12/2022	864	UB UR Receipt Group 01 ACT	2022091201	R 60-600-40000 Charge for Service
\$704.66	9/12/2022	884	UB Receipt Serv 1 WATER	20220912E01	R 60-600-40000 Charge for Service
\$0.08	9/12/2022	884	UB UR Receipt Group 01 ACT	20220912E01	R 60-600-40000 Charge for Service
\$1,086.31	9/12/2022	864	UB Receipt Serv 1 WATER	2022091201	R 60-600-40000 Charge for Service
\$136.44	9/12/2022	883	UB UR Receipt Group 01 ACT	20220912E00	R 60-600-40000 Charge for Service
\$3,351.83					
Tran Date 9/13/2022					
\$13.69	9/13/2022	878	UB UR Receipt Group 01 ACT	20220913E01	R 60-600-40000 Charge for Service
\$47.08	9/13/2022	875	UB Receipt Serv 1 WATER	20220913A00	R 60-600-40000 Charge for Service
\$108.00	9/13/2022	877	UB UR Receipt Group 01 ACT	20220913E00	R 60-600-40000 Charge for Service
\$310.94	9/13/2022	877	UB Receipt Serv 1 WATER	20220913E00	R 60-600-40000 Charge for Service
\$33.35	9/13/2022	878	UB Receipt Serv 1 WATER	20220913E01	R 60-600-40000 Charge for Service
\$513.06					
Tran Date 9/14/2022					
\$37.63	9/14/2022	873	UB UR Receipt Group 01 ACT	20220914E01	R 60-600-40000 Charge for Service
\$2,911.95	9/14/2022	874	UB Receipt Serv 1 WATER	20220913A00	R 60-600-40000 Charge for Service
\$652.31	9/14/2022	873	UB Receipt Serv 1 WATER	20220914E01	R 60-600-40000 Charge for Service
\$6.98	9/14/2022	872	UB UR Receipt Group 01 ACT	20220914E00	R 60-600-40000 Charge for Service
\$410.84	9/14/2022	872	UB Receipt Serv 1 WATER	20220914E00	R 60-600-40000 Charge for Service
\$3,633.14	9/14/2022	847	UB Receipt Serv 1 WATER	2022091401	R 60-600-40000 Charge for Service
\$68.20	9/14/2022	847	UB UR Receipt Group 01 ACT	2022091401	R 60-600-40000 Charge for Service
\$7,721.05					
Tran Date 9/15/2022					
\$64.69	9/15/2022	862	UB UR Receipt Group 01 ACT	20220915E00	R 60-600-40000 Charge for Service
\$636.70	9/15/2022	863	UB Receipt Serv 1 WATER	20220915E01	R 60-600-40000 Charge for Service
\$638.16	9/15/2022	862	UB Receipt Serv 1 WATER	20220915E00	R 60-600-40000 Charge for Service
\$21.92	9/15/2022	865	UB Receipt Serv 1 WATER	20220914A00	R 60-600-40000 Charge for Service
\$44.78	9/15/2022	863	UB UR Receipt Group 01 ACT	20220915E01	R 60-600-40000 Charge for Service
\$1,406.25					
Tran Date 9/16/2022					
\$1.18	9/16/2022	857	UB UR Receipt Group 01 ACT	20220916E01	R 60-600-40000 Charge for Service
\$529.93	9/16/2022	857	UB Receipt Serv 1 WATER	20220916E01	R 60-600-40000 Charge for Service
\$49.60	9/16/2022	842	UB UR Receipt Group 01 ACT	2022091601	R 60-600-40000 Charge for Service
\$722.28	9/16/2022	842	UB Receipt Serv 1 WATER	2022091601	R 60-600-40000 Charge for Service
\$1,115.11	9/16/2022	856	UB Receipt Serv 1 WATER	20220916E00	R 60-600-40000 Charge for Service
\$15.96	9/16/2022	856	UB UR Receipt Group 01 ACT	20220916E00	R 60-600-40000 Charge for Service
\$2,434.06					
Tran Date 9/19/2022					
\$455.38	9/19/2022	852	UB Receipt Serv 1 WATER	20220919E00	R 60-600-40000 Charge for Service
\$16.56	9/19/2022	852	UB UR Receipt Group 01 ACT	20220919E00	R 60-600-40000 Charge for Service
\$209.34	9/19/2022	853	UB Receipt Serv 1 WATER	20220919E01	R 60-600-40000 Charge for Service
\$681.28					
Tran Date 9/20/2022					
\$118.70	9/20/2022	849	UB Receipt Serv 1 WATER	20220920E00	R 60-600-40000 Charge for Service
\$106.33	9/20/2022	826	UB Receipt Serv 1 WATER	2022092001	R 60-600-40000 Charge for Service

CITY OF CLEVER

RECEIPTS JOURNAL-COUNCIL

10/12/22 2:58 PM
Page 8

Amount	Tran Date	Refer	Comments	Batch Name	Account Descr
\$225.03					
Tran Date 9/21/2022					
\$87.44	9/21/2022	844	UB Receipt Serv 1 WATER	20220921E00	R 60-600-40000 Charge for Service
\$0.37	9/21/2022	844	UB UR Receipt Group 01 ACT	20220921E00	R 60-600-40000 Charge for Service
\$56.25	9/21/2022	845	UB Receipt Serv 1 WATER	20220920A00	R 60-600-40000 Charge for Service
\$144.06					
Tran Date 9/22/2022					
\$149.24	9/22/2022	840	UB Receipt Serv 1 WATER	20220922E00	R 60-600-40000 Charge for Service
\$10.29	9/22/2022	840	UB UR Receipt Group 01 ACT	20220922E00	R 60-600-40000 Charge for Service
\$159.53					
Tran Date 9/23/2022					
\$191.35	9/23/2022	924	UB Receipt Serv 1 WATER	2022092301	R 60-600-40000 Charge for Service
\$27.04	9/23/2022	835	UB Receipt Serv 1 WATER	20220923E01	R 60-600-40000 Charge for Service
\$10.17	9/23/2022	834	UB Receipt Serv 1 WATER	20220923E00	R 60-600-40000 Charge for Service
\$228.56					
Tran Date 9/26/2022					
\$88.39	9/26/2022	825	UB Receipt Serv 1 WATER	20220926E01	R 60-600-40000 Charge for Service
\$71.24	9/26/2022	824	UB UR Receipt Group 01 ACT	20220926E00	R 60-600-40000 Charge for Service
\$175.00	9/26/2022	824	UB Receipt Serv 1 WATER	20220926E00	R 60-600-40000 Charge for Service
\$334.63					
Tran Date 9/27/2022					
\$2.90	9/27/2022	921	UB UR Receipt Group 01 ACT	20220927E00	R 60-600-40000 Charge for Service
\$8.50	9/27/2022	922	UB Receipt Serv 1 WATER	20220927E01	R 60-600-40000 Charge for Service
\$83.87	9/27/2022	921	UB Receipt Serv 1 WATER	20220927E00	R 60-600-40000 Charge for Service
\$73.29	9/27/2022	919	UB Receipt Serv 1 WATER	20220927A01	R 60-600-40000 Charge for Service
\$168.56					
Tran Date 9/28/2022					
\$13.11	9/28/2022	918	UB Receipt Serv 1 WATER	20220928E00	R 60-600-40000 Charge for Service
\$13.11					
Tran Date 9/29/2022					
\$43.77	9/29/2022	933	UB Receipt Serv 1 WATER	20220929E01	R 60-600-40000 Charge for Service
\$66.20	9/29/2022	932	UB Receipt Serv 1 WATER	20220929E00	R 60-600-40000 Charge for Service
\$109.97					
Tran Date 9/30/2022					
\$150.61	9/30/2022	929	UB Receipt Serv 1 WATER	20220930E01	R 60-600-40000 Charge for Service
\$230.92	9/30/2022	928	UB Receipt Serv 1 WATER	20220930E00	R 60-600-40000 Charge for Service
\$1.75	9/30/2022	929	UB UR Receipt Group 01 ACT	20220930E01	R 60-600-40000 Charge for Service
\$383.28					
\$27,832.13					
Tran Date 9/6/2022					
\$50.00	9/6/2022	887	UB Receipt Serv 101 TURN O	2022090601	R 60-600-40010 Disconnect & Reconne
\$50.00					
Tran Date 9/7/2022					
\$250.00	9/7/2022	893	UB Receipt Serv 101 TURN O	20220907E00	R 60-600-40010 Disconnect & Reconne
\$250.00					

CITY OF CLEVER

RECEIPTS JOURNAL-COUNCIL

10/12/22 2:58 PM
Page 9

Amount	Tran Date	Refer	Comments	Batch Name	Account Descr
Tran Date 9/8/2022					
\$50.00	9/8/2022	885	UB Receipt Serv 101 TURN O	20220908E00	R 60-600-40010 Disconnect & Reconne
\$50.00					
Tran Date 9/12/2022					
\$25.00	9/12/2022	883	UB Receipt Serv 101 TURN O	20220912E00	R 60-600-40010 Disconnect & Reconne
\$25.00					
Tran Date 9/15/2022					
\$25.00	9/15/2022	865	UB Receipt Serv 101 TURN O	20220914A00	R 60-600-40010 Disconnect & Reconne
\$25.00					
\$400.00					
Tran Date 9/6/2022					
-\$147.46	9/6/2022	901	UB Receipt Surc 30 RES SAL	20220902A00	R 60-600-41000 Utility Deposits
-\$147.46					
Tran Date 9/13/2022					
-\$126.72	9/13/2022	875	UB Receipt Surc 30 RES SAL	20220913A00	R 60-600-41000 Utility Deposits
-\$126.72					
Tran Date 9/14/2022					
\$60.00	9/14/2022	-1	FREEDOM PROPERTIES INV	091622POS	R 60-600-41000 Utility Deposits
\$60.00					
Tran Date 9/15/2022					
-\$164.78	9/15/2022	865	UB Receipt Serv 101 TURN O	20220914A00	R 60-600-41000 Utility Deposits
-\$164.78					
Tran Date 9/21/2022					
-\$183.70	9/21/2022	845	UB Receipt Surc 30 RES SAL	20220920A00	R 60-600-41000 Utility Deposits
-\$183.70					
Tran Date 9/23/2022					
\$60.00	9/23/2022	940	CHARLEE NEWTON 304 N SE	092322POS	R 60-600-41000 Utility Deposits
\$60.00					
Tran Date 9/27/2022					
\$60.00	9/27/2022	870	TAYLOR REAVES 104 E CAN	091322WSCC	R 60-600-41000 Utility Deposits
\$60.00	9/27/2022	855	TYLER YARBER 111 E CANO	091522WSCC	R 60-600-41000 Utility Deposits
\$60.00	9/27/2022	882	MARLENE GIEBLER 707 W O	090822WSCC	R 60-600-41000 Utility Deposits
\$60.00	9/27/2022	870	RONALD MAGGARD 324 W C	091322WSCC	R 60-600-41000 Utility Deposits
\$120.00	9/27/2022	904	MERCEDES HEITHOLD 418 S	090122WSCC	R 60-600-41000 Utility Deposits
\$120.00	9/27/2022	823	JOHN MCFERRON 130 E ME	092322WSCC	R 60-600-41000 Utility Deposits
\$60.00	9/27/2022	876	SYDNEY COLEMAN 509 CAM	091222WSCC	R 60-600-41000 Utility Deposits
\$120.00	9/27/2022	843	BARBRA DRAKE 111 S INMO	092022WSCC	R 60-600-41000 Utility Deposits
\$60.00	9/27/2022	850	MATTHEW FRAME 211 E CY	091622WSCC	R 60-600-41000 Utility Deposits
\$120.00	9/27/2022	832	ROBYN DECKARD 608 B MO	092222WSCC	R 60-600-41000 Utility Deposits
\$60.00	9/27/2022	899	DEVON JESTER 309 N CHEY	090222WSCC	R 60-600-41000 Utility Deposits
\$60.00	9/27/2022	904	MICHAELA SWITCH 703 W L	090122WSCC	R 60-600-41000 Utility Deposits
\$120.00	9/27/2022	861	LAUREN DECKARD 707 W O	091422WSCC	R 60-600-41000 Utility Deposits
\$120.00	9/27/2022	850	ASIA MITCHELL 208 N CHRI	091622WSCC	R 60-600-41000 Utility Deposits
\$120.00	9/27/2022	861	PRESTON COOK 711 W LAKE	091422WSCC	R 60-600-41000 Utility Deposits
\$60.00	9/27/2022	848	SUSAN MURDOCK 205 N CH	091922WSCC	R 60-600-41000 Utility Deposits
\$120.00	9/27/2022	861	GRACE PREATOR 217 EAGLE	091422WSCC	R 60-600-41000 Utility Deposits

CITY OF CLEVER

RECEIPTS JOURNAL-COUNCIL

10/12/22 2:58 PM
Page 10

Amount	Tran Date	Refer	Comments	Batch Name	Account Descr
\$120.00	9/27/2022	917	TANNER TEAGUE 212 E ROB	092722WSCC	R 60-600-41000 Utility Deposits
\$120.00	9/27/2022	910	ISAAC RUSSELL 325 B PAWN	090122WSCC	R 60-600-41000 Utility Deposits
\$60.00	9/27/2022	846	BP22-0026 101 S CLARKE	091422POS	R 60-600-41000 Utility Deposits
-\$209.23	9/27/2022	919	UB Receipt Surc 30 RES SAL	20220927A01	R 60-600-41000 Utility Deposits
<u>\$1,590.77</u>					
Tran Date 9/29/2022					
\$60.00	9/29/2022	927	STEPHEN MONTGOMERY 70	092922WSCC	R 60-600-41000 Utility Deposits
<u>\$60.00</u>					
<u>\$1,148.11</u>					
Tran Date 9/1/2022					
\$9.34	9/1/2022	911	UB Receipt Serv Pen 10 SEW	20220901E00	R 60-600-41610 Penalties Assessed
\$0.10	9/1/2022	911	UB Receipt Serv Pen 30 PRI	20220901E00	R 60-600-41610 Penalties Assessed
\$0.04	9/1/2022	912	UB Receipt Serv Pen 30 PRI	20220901E01	R 60-600-41610 Penalties Assessed
\$2.74	9/1/2022	912	UB Receipt Serv Pen 10 SEW	20220901E01	R 60-600-41610 Penalties Assessed
\$1.37	9/1/2022	912	UB Receipt Serv Pen 20 TRA	20220901E01	R 60-600-41610 Penalties Assessed
\$2.20	9/1/2022	912	UB Receipt Serv Pen 1 WATE	20220901E01	R 60-600-41610 Penalties Assessed
\$2.74	9/1/2022	911	UB Receipt Serv Pen 20 TRA	20220901E00	R 60-600-41610 Penalties Assessed
<u>\$50.47</u>	9/1/2022	911	UB Receipt Serv Pen 1 WATE	20220901E00	R 60-600-41610 Penalties Assessed
<u>\$69.00</u>					
Tran Date 9/2/2022					
\$13.73	9/2/2022	906	UB Receipt Serv Pen 10 SEW	20220902E00	R 60-600-41610 Penalties Assessed
\$37.92	9/2/2022	906	UB Receipt Serv Pen 1 WATE	20220902E00	R 60-600-41610 Penalties Assessed
\$6.23	9/2/2022	907	UB Receipt Serv Pen 1 WATE	20220902E01	R 60-600-41610 Penalties Assessed
\$2.23	9/2/2022	896	UB Receipt Serv Pen 10 SEW	2022090201	R 60-600-41610 Penalties Assessed
<u>\$16.04</u>	9/2/2022	896	UB Receipt Serv Pen 1 WATE	2022090201	R 60-600-41610 Penalties Assessed
<u>\$76.15</u>					
Tran Date 9/6/2022					
\$6.79	9/6/2022	887	UB Receipt Serv Pen 10 SEW	2022090601	R 60-600-41610 Penalties Assessed
\$1.17	9/6/2022	901	UB Receipt Serv Pen 1 WATE	20220902A00	R 60-600-41610 Penalties Assessed
\$2.74	9/6/2022	887	UB Receipt Serv Pen 20 TRA	2022090601	R 60-600-41610 Penalties Assessed
\$0.28	9/6/2022	898	UB Receipt Serv Pen 30 PRI	20220906E00	R 60-600-41610 Penalties Assessed
\$0.08	9/6/2022	887	UB Receipt Serv Pen 30 PRI	2022090601	R 60-600-41610 Penalties Assessed
\$10.03	9/6/2022	898	UB Receipt Serv Pen 20 TRA	20220906E00	R 60-600-41610 Penalties Assessed
\$1.87	9/6/2022	901	UB Receipt Serv Pen 10 SEW	20220902A00	R 60-600-41610 Penalties Assessed
\$33.68	9/6/2022	887	UB Receipt Serv Pen 1 WATE	2022090601	R 60-600-41610 Penalties Assessed
\$20.06	9/6/2022	898	UB Receipt Serv Pen 10 SEW	20220906E00	R 60-600-41610 Penalties Assessed
\$65.90	9/6/2022	898	UB Receipt Serv Pen 1 WATE	20220906E00	R 60-600-41610 Penalties Assessed
\$2.28	9/6/2022	897	UB Receipt Serv Pen 10 SEW	20220906E01	R 60-600-41610 Penalties Assessed
\$1.37	9/6/2022	901	UB Receipt Serv Pen 20 TRA	20220902A00	R 60-600-41610 Penalties Assessed
\$0.04	9/6/2022	901	UB Receipt Serv Pen 30 PRI	20220902A00	R 60-600-41610 Penalties Assessed
<u>\$3.48</u>	9/6/2022	897	UB Receipt Serv Pen 1 WATE	20220906E01	R 60-600-41610 Penalties Assessed
<u>\$149.77</u>					
Tran Date 9/7/2022					
\$0.08	9/7/2022	894	UB Receipt Serv Pen 30 PRI	20220907E01	R 60-600-41610 Penalties Assessed
\$14.26	9/7/2022	894	UB Receipt Serv Pen 1 WATE	20220907E01	R 60-600-41610 Penalties Assessed
\$49.63	9/7/2022	893	UB Receipt Serv Pen 1 WATE	20220907E00	R 60-600-41610 Penalties Assessed
\$5.82	9/7/2022	894	UB Receipt Serv Pen 10 SEW	20220907E01	R 60-600-41610 Penalties Assessed
\$12.11	9/7/2022	893	UB Receipt Serv Pen 20 TRA	20220907E00	R 60-600-41610 Penalties Assessed
\$3.18	9/7/2022	894	UB Receipt Serv Pen 20 TRA	20220907E01	R 60-600-41610 Penalties Assessed
<u>\$19.98</u>	9/7/2022	893	UB Receipt Serv Pen 10 SEW	20220907E00	R 60-600-41610 Penalties Assessed

CITY OF CLEVER

RECEIPTS JOURNAL-COUNCIL

10/12/22 2:58 PM
Page 11

Amount	Tran Date	Refer	Comments	Batch Name	Account Descr
\$0.36	9/7/2022	893	UB Receipt Serv Pen 30 PRI	20220907E00	R 60-600-41610 Penalties Assessed
<u>\$105.42</u>					
Tran Date 9/8/2022					
\$3.17	9/8/2022	885	UB Receipt Serv Pen 1 WATE	20220908E00	R 60-600-41610 Penalties Assessed
\$0.08	9/8/2022	885	UB Receipt Serv Pen 30 PRI	20220908E00	R 60-600-41610 Penalties Assessed
\$3.18	9/8/2022	885	UB Receipt Serv Pen 20 TRA	20220908E00	R 60-600-41610 Penalties Assessed
<u>\$4.08</u>	9/8/2022	885	UB Receipt Serv Pen 10 SEW	20220908E00	R 60-600-41610 Penalties Assessed
<u>\$10.51</u>					
Tran Date 9/12/2022					
\$12.59	9/12/2022	883	UB Receipt Serv Pen 1 WATE	20220912E00	R 60-600-41610 Penalties Assessed
\$0.04	9/12/2022	883	UB Receipt Serv Pen 30 PRI	20220912E00	R 60-600-41610 Penalties Assessed
\$3.73	9/12/2022	883	UB Receipt Serv Pen 10 SEW	20220912E00	R 60-600-41610 Penalties Assessed
<u>\$1.37</u>	9/12/2022	883	UB Receipt Serv Pen 20 TRA	20220912E00	R 60-600-41610 Penalties Assessed
<u>\$17.73</u>					
Tran Date 9/15/2022					
\$0.13	9/15/2022	865	UB Receipt Serv Pen 30 PRI	20220914A00	R 60-600-41610 Penalties Assessed
\$7.67	9/15/2022	865	UB Receipt Serv Pen 10 SEW	20220914A00	R 60-600-41610 Penalties Assessed
\$4.11	9/15/2022	865	UB Receipt Serv Pen 20 TRA	20220914A00	R 60-600-41610 Penalties Assessed
<u>\$4.32</u>	9/15/2022	865	UB Receipt Serv Pen 1 WATE	20220914A00	R 60-600-41610 Penalties Assessed
<u>\$16.23</u>					
Tran Date 9/16/2022					
<u>\$1.04</u>	9/16/2022	842	UB Receipt Serv Pen 1 WATE	2022091601	R 60-600-41610 Penalties Assessed
<u>\$1.04</u>					
Tran Date 9/19/2022					
\$0.88	9/19/2022	852	UB Receipt Serv Pen 30 PRI	20220919E00	R 60-600-41610 Penalties Assessed
\$52.37	9/19/2022	852	UB Receipt Serv Pen 1 WATE	20220919E00	R 60-600-41610 Penalties Assessed
\$60.46	9/19/2022	852	UB Receipt Serv Pen 10 SEW	20220919E00	R 60-600-41610 Penalties Assessed
\$33.27	9/19/2022	852	UB Receipt Serv Pen 20 TRA	20220919E00	R 60-600-41610 Penalties Assessed
\$10.03	9/19/2022	853	UB Receipt Serv Pen 20 TRA	20220919E01	R 60-600-41610 Penalties Assessed
\$17.67	9/19/2022	853	UB Receipt Serv Pen 10 SEW	20220919E01	R 60-600-41610 Penalties Assessed
\$24.26	9/19/2022	853	UB Receipt Serv Pen 1 WATE	20220919E01	R 60-600-41610 Penalties Assessed
<u>\$0.26</u>	9/19/2022	853	UB Receipt Serv Pen 30 PRI	20220919E01	R 60-600-41610 Penalties Assessed
<u>\$199.20</u>					
Tran Date 9/20/2022					
\$12.46	9/20/2022	826	UB Receipt Serv Pen 1 WATE	2022092001	R 60-600-41610 Penalties Assessed
\$8.44	9/20/2022	826	UB Receipt Serv Pen 20 TRA	2022092001	R 60-600-41610 Penalties Assessed
\$0.24	9/20/2022	826	UB Receipt Serv Pen 30 PRI	2022092001	R 60-600-41610 Penalties Assessed
\$14.69	9/20/2022	826	UB Receipt Serv Pen 10 SEW	2022092001	R 60-600-41610 Penalties Assessed
\$0.17	9/20/2022	849	UB Receipt Serv Pen 30 PRI	20220920E00	R 60-600-41610 Penalties Assessed
\$9.21	9/20/2022	849	UB Receipt Serv Pen 10 SEW	20220920E00	R 60-600-41610 Penalties Assessed
\$7.29	9/20/2022	849	UB Receipt Serv Pen 20 TRA	20220920E00	R 60-600-41610 Penalties Assessed
<u>\$11.87</u>	9/20/2022	849	UB Receipt Serv Pen 1 WATE	20220920E00	R 60-600-41610 Penalties Assessed
<u>\$64.37</u>					
Tran Date 9/21/2022					
\$7.29	9/21/2022	844	UB Receipt Serv Pen 20 TRA	20220921E00	R 60-600-41610 Penalties Assessed
\$10.58	9/21/2022	844	UB Receipt Serv Pen 10 SEW	20220921E00	R 60-600-41610 Penalties Assessed
\$8.74	9/21/2022	844	UB Receipt Serv Pen 1 WATE	20220921E00	R 60-600-41610 Penalties Assessed
\$0.20	9/21/2022	844	UB Receipt Serv Pen 30 PRI	20220921E00	R 60-600-41610 Penalties Assessed

CITY OF CLEVER

RECEIPTS JOURNAL-COUNCIL

10/12/22 2:58 PM
Page 12

Amount	Tran Date	Refer	Comments	Batch Name	Account Descr
\$26.81					
Tran Date 9/22/2022					
\$0.16	9/22/2022	840	UB Receipt Serv Pen 30 PRI	20220922E00	R 60-600-41610 Penalties Assessed
\$7.21	9/22/2022	840	UB Receipt Serv Pen 20 TRA	20220922E00	R 60-600-41610 Penalties Assessed
\$19.55	9/22/2022	840	UB Receipt Serv Pen 1 WATE	20220922E00	R 60-600-41610 Penalties Assessed
\$14.01	9/22/2022	840	UB Receipt Serv Pen 10 SEW	20220922E00	R 60-600-41610 Penalties Assessed
\$40.93					
Tran Date 9/23/2022					
\$1.37	9/23/2022	834	UB Receipt Serv Pen 20 TRA	20220923E00	R 60-600-41610 Penalties Assessed
\$0.04	9/23/2022	924	UB Receipt Serv Pen 30 PRI	2022092301	R 60-600-41610 Penalties Assessed
\$0.04	9/23/2022	835	UB Receipt Serv Pen 30 PRI	20220923E01	R 60-600-41610 Penalties Assessed
\$1.81	9/23/2022	835	UB Receipt Serv Pen 20 TRA	20220923E01	R 60-600-41610 Penalties Assessed
\$19.96	9/23/2022	924	UB Receipt Serv Pen 1 WATE	2022092301	R 60-600-41610 Penalties Assessed
\$2.45	9/23/2022	835	UB Receipt Serv Pen 10 SEW	20220923E01	R 60-600-41610 Penalties Assessed
\$2.70	9/23/2022	835	UB Receipt Serv Pen 1 WATE	20220923E01	R 60-600-41610 Penalties Assessed
\$1.02	9/23/2022	834	UB Receipt Serv Pen 1 WATE	20220923E00	R 60-600-41610 Penalties Assessed
\$0.04	9/23/2022	834	UB Receipt Serv Pen 30 PRI	20220923E00	R 60-600-41610 Penalties Assessed
\$1.60	9/23/2022	834	UB Receipt Serv Pen 10 SEW	20220923E00	R 60-600-41610 Penalties Assessed
\$3.50	9/23/2022	924	UB Receipt Serv Pen 10 SEW	2022092301	R 60-600-41610 Penalties Assessed
\$1.81	9/23/2022	924	UB Receipt Serv Pen 20 TRA	2022092301	R 60-600-41610 Penalties Assessed
\$36.34					
Tran Date 9/26/2022					
\$6.66	9/26/2022	824	UB Receipt Serv Pen 20 TRA	20220926E00	R 60-600-41610 Penalties Assessed
\$0.04	9/26/2022	825	UB Receipt Serv Pen 30 PRI	20220926E01	R 60-600-41610 Penalties Assessed
\$8.84	9/26/2022	825	UB Receipt Serv Pen 1 WATE	20220926E01	R 60-600-41610 Penalties Assessed
\$2.86	9/26/2022	825	UB Receipt Serv Pen 10 SEW	20220926E01	R 60-600-41610 Penalties Assessed
\$14.25	9/26/2022	824	UB Receipt Serv Pen 10 SEW	20220926E00	R 60-600-41610 Penalties Assessed
\$1.37	9/26/2022	825	UB Receipt Serv Pen 20 TRA	20220926E01	R 60-600-41610 Penalties Assessed
\$17.50	9/26/2022	824	UB Receipt Serv Pen 1 WATE	20220926E00	R 60-600-41610 Penalties Assessed
\$0.16	9/26/2022	824	UB Receipt Serv Pen 30 PRI	20220926E00	R 60-600-41610 Penalties Assessed
\$51.68					
Tran Date 9/27/2022					
\$0.09	9/27/2022	922	UB Receipt Serv Pen 30 PRI	20220927E01	R 60-600-41610 Penalties Assessed
\$6.85	9/27/2022	921	UB Receipt Serv Pen 20 TRA	20220927E00	R 60-600-41610 Penalties Assessed
\$11.00	9/27/2022	921	UB Receipt Serv Pen 10 SEW	20220927E00	R 60-600-41610 Penalties Assessed
\$8.38	9/27/2022	921	UB Receipt Serv Pen 1 WATE	20220927E00	R 60-600-41610 Penalties Assessed
\$0.18	9/27/2022	921	UB Receipt Serv Pen 30 PRI	20220927E00	R 60-600-41610 Penalties Assessed
\$0.85	9/27/2022	922	UB Receipt Serv Pen 1 WATE	20220927E01	R 60-600-41610 Penalties Assessed
\$1.43	9/27/2022	922	UB Receipt Serv Pen 10 SEW	20220927E01	R 60-600-41610 Penalties Assessed
\$28.78					
Tran Date 9/28/2022					
\$7.50	9/28/2022	918	UB Receipt Serv Pen 10 SEW	20220928E00	R 60-600-41610 Penalties Assessed
\$0.12	9/28/2022	918	UB Receipt Serv Pen 30 PRI	20220928E00	R 60-600-41610 Penalties Assessed
\$8.41	9/28/2022	918	UB Receipt Serv Pen 1 WATE	20220928E00	R 60-600-41610 Penalties Assessed
\$4.55	9/28/2022	918	UB Receipt Serv Pen 20 TRA	20220928E00	R 60-600-41610 Penalties Assessed
\$20.58					
Tran Date 9/29/2022					
\$1.49	9/29/2022	932	UB Receipt Serv Pen 1 WATE	20220929E00	R 60-600-41610 Penalties Assessed
\$1.89	9/29/2022	932	UB Receipt Serv Pen 10 SEW	20220929E00	R 60-600-41610 Penalties Assessed

CITY OF CLEVER

RECEIPTS JOURNAL-COUNCIL

10/12/22 2:58 PM
Page 13

Amount	Tran Date	Refer	Comments	Batch Name	Account Descr
\$0.04	9/29/2022	932	UB Receipt Serv Pen 30 PRI	20220929E00	R 60-600-41610 Penalties Assessed
\$1.37	9/29/2022	932	UB Receipt Serv Pen 20 TRA	20220929E00	R 60-600-41610 Penalties Assessed
<u>\$4.79</u>					
Tran Date 9/30/2022					
\$0.08	9/30/2022	928	UB Receipt Serv Pen 30 PRI	20220930E00	R 60-600-41610 Penalties Assessed
\$3.78	9/30/2022	928	UB Receipt Serv Pen 10 SEW	20220930E00	R 60-600-41610 Penalties Assessed
\$3.18	9/30/2022	928	UB Receipt Serv Pen 20 TRA	20220930E00	R 60-600-41610 Penalties Assessed
\$1.48	9/30/2022	929	UB Receipt Serv Pen 10 SEW	20220930E01	R 60-600-41610 Penalties Assessed
\$15.13	9/30/2022	928	UB Receipt Serv Pen 1 WATE	20220930E00	R 60-600-41610 Penalties Assessed
\$1.22	9/30/2022	929	UB Receipt Serv Pen 1 WATE	20220930E01	R 60-600-41610 Penalties Assessed
\$0.04	9/30/2022	929	UB Receipt Serv Pen 30 PRI	20220930E01	R 60-600-41610 Penalties Assessed
<u>\$24.91</u>					
<u>\$944.24</u>					
Tran Date 9/1/2022					
\$54.80	9/1/2022	912	UB Receipt Serv 20 TRASH	20220901E01	R 60-600-41620 Trash Service
\$1,224.16	9/1/2022	913	UB Receipt Serv 20 TRASH	20220831AC0	R 60-600-41620 Trash Service
\$185.50	9/1/2022	911	UB Receipt Serv 20 TRASH	20220901E00	R 60-600-41620 Trash Service
<u>\$1,464.46</u>					
Tran Date 9/2/2022					
\$292.60	9/2/2022	896	UB Receipt Serv 20 TRASH	2022090201	R 60-600-41620 Trash Service
\$118.40	9/2/2022	906	UB Receipt Serv 20 TRASH	20220902E00	R 60-600-41620 Trash Service
\$300.90	9/2/2022	907	UB Receipt Serv 20 TRASH	20220902E01	R 60-600-41620 Trash Service
<u>\$711.90</u>					
Tran Date 9/6/2022					
-\$13.70	9/6/2022	887	UB Receipt Serv 1 WATER	2022090601	R 60-600-41620 Trash Service
\$646.60	9/6/2022	887	UB Receipt Serv 20 TRASH	2022090601	R 60-600-41620 Trash Service
\$54.80	9/6/2022	901	UB Receipt Serv 20 TRASH	20220902A00	R 60-600-41620 Trash Service
\$172.35	9/6/2022	897	UB Receipt Serv 20 TRASH	20220906E01	R 60-600-41620 Trash Service
\$679.10	9/6/2022	898	UB Receipt Serv 20 TRASH	20220906E00	R 60-600-41620 Trash Service
<u>\$1,539.15</u>					
Tran Date 9/7/2022					
\$449.90	9/7/2022	893	UB Receipt Serv 20 TRASH	20220907E00	R 60-600-41620 Trash Service
\$240.00	9/7/2022	881	UB Receipt Serv 20 TRASH	2022090701	R 60-600-41620 Trash Service
\$132.10	9/7/2022	894	UB Receipt Serv 20 TRASH	20220907E01	R 60-600-41620 Trash Service
<u>\$822.00</u>					
Tran Date 9/8/2022					
\$138.84	9/8/2022	885	UB Receipt Serv 20 TRASH	20220908E00	R 60-600-41620 Trash Service
\$37.16	9/8/2022	886	UB Receipt Serv 20 TRASH	20220908E01	R 60-600-41620 Trash Service
\$296.26	9/8/2022	879	UB Receipt Serv 20 TRASH	2022090801	R 60-600-41620 Trash Service
<u>\$472.26</u>					
Tran Date 9/12/2022					
\$560.88	9/12/2022	883	UB Receipt Serv 20 TRASH	20220912E00	R 60-600-41620 Trash Service
\$408.30	9/12/2022	884	UB Receipt Serv 20 TRASH	20220912E01	R 60-600-41620 Trash Service
\$509.44	9/12/2022	864	UB Receipt Serv 20 TRASH	2022091201	R 60-600-41620 Trash Service
<u>\$1,478.62</u>					
Tran Date 9/13/2022					
\$23.00	9/13/2022	875	UB Receipt Serv 20 TRASH	20220913A00	R 60-600-41620 Trash Service

CITY OF CLEVER

RECEIPTS JOURNAL-COUNCIL

10/12/22 2:58 PM
Page 14

Amount	Tran Date	Refer	Comments	Batch Name	Account Descr
\$168.30	9/13/2022	877	UB Receipt Serv 20 TRASH	20220913E00	R 60-600-41620 Trash Service
\$18.10	9/13/2022	878	UB Receipt Serv 20 TRASH	20220913E01	R 60-600-41620 Trash Service
<u>\$209.40</u>					
Tran Date 9/14/2022					
\$658.19	9/14/2022	847	UB Receipt Serv 20 TRASH	2022091401	R 60-600-41620 Trash Service
\$251.00	9/14/2022	872	UB Receipt Serv 20 TRASH	20220914E00	R 60-600-41620 Trash Service
\$297.67	9/14/2022	873	UB Receipt Serv 20 TRASH	20220914E01	R 60-600-41620 Trash Service
\$1,999.04	9/14/2022	874	UB Receipt Serv 20 TRASH	20220913AC0	R 60-600-41620 Trash Service
<u>\$3,205.90</u>					
Tran Date 9/15/2022					
\$385.30	9/15/2022	862	UB Receipt Serv 20 TRASH	20220915E00	R 60-600-41620 Trash Service
\$355.70	9/15/2022	863	UB Receipt Serv 20 TRASH	20220915E01	R 60-600-41620 Trash Service
\$54.80	9/15/2022	865	UB Receipt Serv 20 TRASH	20220914A00	R 60-600-41620 Trash Service
<u>\$795.80</u>					
Tran Date 9/16/2022					
\$219.06	9/16/2022	857	UB Receipt Serv 20 TRASH	20220916E01	R 60-600-41620 Trash Service
\$471.56	9/16/2022	842	UB Receipt Serv 20 TRASH	2022091601	R 60-600-41620 Trash Service
\$547.67	9/16/2022	856	UB Receipt Serv 20 TRASH	20220916E00	R 60-600-41620 Trash Service
<u>\$1,238.29</u>					
Tran Date 9/19/2022					
\$332.66	9/19/2022	852	UB Receipt Serv 20 TRASH	20220919E00	R 60-600-41620 Trash Service
\$100.30	9/19/2022	853	UB Receipt Serv 20 TRASH	20220919E01	R 60-600-41620 Trash Service
<u>\$432.96</u>					
Tran Date 9/20/2022					
\$72.90	9/20/2022	849	UB Receipt Serv 20 TRASH	20220920E00	R 60-600-41620 Trash Service
\$84.40	9/20/2022	826	UB Receipt Serv 20 TRASH	2022092001	R 60-600-41620 Trash Service
<u>\$157.30</u>					
Tran Date 9/21/2022					
\$52.60	9/21/2022	845	UB Receipt Serv 20 TRASH	20220920A00	R 60-600-41620 Trash Service
\$72.90	9/21/2022	844	UB Receipt Serv 20 TRASH	20220921E00	R 60-600-41620 Trash Service
<u>\$125.50</u>					
Tran Date 9/22/2022					
\$72.08	9/22/2022	840	UB Receipt Serv 20 TRASH	20220922E00	R 60-600-41620 Trash Service
<u>\$72.08</u>					
Tran Date 9/23/2022					
\$13.70	9/23/2022	834	UB Receipt Serv 20 TRASH	20220923E00	R 60-600-41620 Trash Service
\$18.10	9/23/2022	835	UB Receipt Serv 20 TRASH	20220923E01	R 60-600-41620 Trash Service
\$18.10	9/23/2022	924	UB Receipt Serv 20 TRASH	2022092301	R 60-600-41620 Trash Service
<u>\$49.90</u>					
Tran Date 9/26/2022					
\$66.57	9/26/2022	824	UB Receipt Serv 20 TRASH	20220926E00	R 60-600-41620 Trash Service
\$13.70	9/26/2022	825	UB Receipt Serv 20 TRASH	20220926E01	R 60-600-41620 Trash Service
<u>\$80.27</u>					
Tran Date 9/27/2022					
\$41.10	9/27/2022	919	UB Receipt Serv 20 TRASH	20220927A01	R 60-600-41620 Trash Service
\$68.50	9/27/2022	921	UB Receipt Serv 20 TRASH	20220927E00	R 60-600-41620 Trash Service

CITY OF CLEVER

RECEIPTS JOURNAL-COUNCIL

10/12/22 2:58 PM
Page 15

Amount	Tran Date	Refer	Comments	Batch Name	Account Descr
\$109.60					
Tran Date 9/28/2022					
\$109.10	9/28/2022	918	UB Receipt Serv 20 TRASH	20220928E00	R 60-600-41620 Trash Service
\$109.10					
Tran Date 9/29/2022					
\$13.70	9/29/2022	933	UB Receipt Serv 20 TRASH	20220929E01	R 60-600-41620 Trash Service
\$66.30	9/29/2022	932	UB Receipt Serv 20 TRASH	20220929E00	R 60-600-41620 Trash Service
\$80.00					
Tran Date 9/30/2022					
\$86.60	9/30/2022	929	UB Receipt Serv 20 TRASH	20220930E01	R 60-600-41620 Trash Service
\$191.26	9/30/2022	928	UB Receipt Serv 20 TRASH	20220930E00	R 60-600-41620 Trash Service
\$277.86					
\$13,432.35					
Tran Date 9/27/2022					
\$398.00	9/27/2022	846	BP22-0026 101 S CLARKE	091422POS	R 60-600-42130 Meter Set Sales
\$398.00					
\$398.00					
Tran Date 9/1/2022					
\$1.76	9/1/2022	912	UB Receipt Serv 30 PRIMACY	20220901E01	R 60-600-44705 Primacy Fees
\$5.94	9/1/2022	911	UB Receipt Serv 30 PRIMACY	20220901E00	R 60-600-44705 Primacy Fees
\$43.82	9/1/2022	913	UB Receipt Serv 30 PRIMACY	20220831AC0	R 60-600-44705 Primacy Fees
\$51.52					
Tran Date 9/2/2022					
\$3.52	9/2/2022	906	UB Receipt Serv 30 PRIMACY	20220902E00	R 60-600-44705 Primacy Fees
\$12.00	9/2/2022	896	UB Receipt Serv 30 PRIMACY	2022090201	R 60-600-44705 Primacy Fees
\$9.54	9/2/2022	907	UB Receipt Serv 30 PRIMACY	20220902E01	R 60-600-44705 Primacy Fees
\$25.06					
Tran Date 9/6/2022					
\$4.84	9/6/2022	897	UB Receipt Serv 30 PRIMACY	20220906E01	R 60-600-44705 Primacy Fees
\$20.63	9/6/2022	898	UB Receipt Serv 30 PRIMACY	20220906E00	R 60-600-44705 Primacy Fees
\$1.32	9/6/2022	901	UB Receipt Serv 30 PRIMACY	20220902A00	R 60-600-44705 Primacy Fees
-\$0.44	9/6/2022	887	UB Receipt Serv 1 WATER	2022090601	R 60-600-44705 Primacy Fees
\$25.82	9/6/2022	887	UB Receipt Serv 30 PRIMACY	2022090601	R 60-600-44705 Primacy Fees
\$52.17					
Tran Date 9/7/2022					
\$10.03	9/7/2022	881	UB Receipt Serv 30 PRIMACY	2022090701	R 60-600-44705 Primacy Fees
\$3.91	9/7/2022	894	UB Receipt Serv 30 PRIMACY	20220907E01	R 60-600-44705 Primacy Fees
\$14.10	9/7/2022	893	UB Receipt Serv 30 PRIMACY	20220907E00	R 60-600-44705 Primacy Fees
\$28.04					
Tran Date 9/8/2022					
\$0.88	9/8/2022	886	UB Receipt Serv 30 PRIMACY	20220908E01	R 60-600-44705 Primacy Fees
\$12.38	9/8/2022	879	UB Receipt Serv 30 PRIMACY	2022090801	R 60-600-44705 Primacy Fees
\$4.04	9/8/2022	885	UB Receipt Serv 30 PRIMACY	20220908E00	R 60-600-44705 Primacy Fees
\$17.30					
Tran Date 9/12/2022					
\$12.56	9/12/2022	884	UB Receipt Serv 30 PRIMACY	20220912E01	R 60-600-44705 Primacy Fees

CITY OF CLEVER

RECEIPTS JOURNAL-COUNCIL

10/12/22 2:58 PM
Page 16

Amount	Tran Date	Refer	Comments	Batch Name	Account Descr
\$17.60	9/12/2022	883	UB Receipt Serv 30 PRIMACY	20220912E00	R 60-600-44705 Primacy Fees
\$24.10	9/12/2022	864	UB Receipt Serv 30 PRIMACY	2022091201	R 60-600-44705 Primacy Fees
<u>\$54.26</u>					
Tran Date 9/13/2022					
\$0.44	9/13/2022	878	UB Receipt Serv 30 PRIMACY	20220913E01	R 60-600-44705 Primacy Fees
\$4.84	9/13/2022	877	UB Receipt Serv 30 PRIMACY	20220913E00	R 60-600-44705 Primacy Fees
\$1.32	9/13/2022	875	UB Receipt Serv 30 PRIMACY	20220913A00	R 60-600-44705 Primacy Fees
<u>\$6.60</u>					
Tran Date 9/14/2022					
\$68.50	9/14/2022	874	UB Receipt Serv 30 PRIMACY	20220913AC0	R 60-600-44705 Primacy Fees
\$8.80	9/14/2022	873	UB Receipt Serv 30 PRIMACY	20220914E01	R 60-600-44705 Primacy Fees
\$7.92	9/14/2022	872	UB Receipt Serv 30 PRIMACY	20220914E00	R 60-600-44705 Primacy Fees
\$27.34	9/14/2022	847	UB Receipt Serv 30 PRIMACY	2022091401	R 60-600-44705 Primacy Fees
<u>\$112.56</u>					
Tran Date 9/15/2022					
\$11.82	9/15/2022	862	UB Receipt Serv 30 PRIMACY	20220915E00	R 60-600-44705 Primacy Fees
\$1.76	9/15/2022	865	UB Receipt Serv 30 PRIMACY	20220914A00	R 60-600-44705 Primacy Fees
\$10.39	9/15/2022	863	UB Receipt Serv 30 PRIMACY	20220915E01	R 60-600-44705 Primacy Fees
<u>\$23.97</u>					
Tran Date 9/16/2022					
\$16.28	9/16/2022	856	UB Receipt Serv 30 PRIMACY	20220916E00	R 60-600-44705 Primacy Fees
\$6.16	9/16/2022	857	UB Receipt Serv 30 PRIMACY	20220916E01	R 60-600-44705 Primacy Fees
\$16.22	9/16/2022	842	UB Receipt Serv 30 PRIMACY	2022091601	R 60-600-44705 Primacy Fees
<u>\$38.66</u>					
Tran Date 9/19/2022					
\$9.59	9/19/2022	852	UB Receipt Serv 30 PRIMACY	20220919E00	R 60-600-44705 Primacy Fees
\$2.83	9/19/2022	853	UB Receipt Serv 30 PRIMACY	20220919E01	R 60-600-44705 Primacy Fees
<u>\$12.42</u>					
Tran Date 9/20/2022					
\$2.64	9/20/2022	826	UB Receipt Serv 30 PRIMACY	2022092001	R 60-600-44705 Primacy Fees
\$1.85	9/20/2022	849	UB Receipt Serv 30 PRIMACY	20220920E00	R 60-600-44705 Primacy Fees
<u>\$4.49</u>					
Tran Date 9/21/2022					
\$1.76	9/21/2022	845	UB Receipt Serv 30 PRIMACY	20220920A00	R 60-600-44705 Primacy Fees
\$2.20	9/21/2022	844	UB Receipt Serv 30 PRIMACY	20220921E00	R 60-600-44705 Primacy Fees
<u>\$3.96</u>					
Tran Date 9/22/2022					
\$1.76	9/22/2022	840	UB Receipt Serv 30 PRIMACY	20220922E00	R 60-600-44705 Primacy Fees
<u>\$1.76</u>					
Tran Date 9/23/2022					
\$0.44	9/23/2022	924	UB Receipt Serv 30 PRIMACY	2022092301	R 60-600-44705 Primacy Fees
\$0.44	9/23/2022	834	UB Receipt Serv 30 PRIMACY	20220923E00	R 60-600-44705 Primacy Fees
\$0.44	9/23/2022	835	UB Receipt Serv 30 PRIMACY	20220923E01	R 60-600-44705 Primacy Fees
<u>\$1.32</u>					
Tran Date 9/26/2022					
\$0.44	9/26/2022	825	UB Receipt Serv 30 PRIMACY	20220926E01	R 60-600-44705 Primacy Fees

CITY OF CLEVER RECEIPTS JOURNAL-COUNCIL

10/12/22 2:58 PM
Page 17

Amount	Tran Date	Refer	Comments	Batch Name	Account Descr
\$1.76	9/26/2022	824	UB Receipt Serv 30 PRIMACY	20220926E00	R 60-600-44705 Primacy Fees
\$2.20					
Tran Date 9/27/2022					
\$0.94	9/27/2022	922	UB Receipt Serv 30 PRIMACY	20220927E01	R 60-600-44705 Primacy Fees
\$1.98	9/27/2022	921	UB Receipt Serv 30 PRIMACY	20220927E00	R 60-600-44705 Primacy Fees
\$2.20	9/27/2022	919	UB Receipt Serv 30 PRIMACY	20220927A01	R 60-600-44705 Primacy Fees
\$5.12					
Tran Date 9/28/2022					
\$3.08	9/28/2022	918	UB Receipt Serv 30 PRIMACY	20220928E00	R 60-600-44705 Primacy Fees
\$3.08					
Tran Date 9/29/2022					
\$2.20	9/29/2022	932	UB Receipt Serv 30 PRIMACY	20220929E00	R 60-600-44705 Primacy Fees
\$14.14	9/29/2022	933	UB Receipt Serv 30 PRIMACY	20220929E01	R 60-600-44705 Primacy Fees
\$16.34					
Tran Date 9/30/2022					
\$5.28	9/30/2022	928	UB Receipt Serv 30 PRIMACY	20220930E00	R 60-600-44705 Primacy Fees
\$3.63	9/30/2022	929	UB Receipt Serv 30 PRIMACY	20220930E01	R 60-600-44705 Primacy Fees
\$8.91					
\$469.74					
Tran Date 9/1/2022					
\$1.18	9/1/2022	912	UB Receipt Surc 30 RES SAL	20220901E01	R 60-600-44710 Sales Tax Collections
\$5.69	9/1/2022	911	UB Receipt Surc 30 RES SAL	20220901E00	R 60-600-44710 Sales Tax Collections
\$32.63	9/1/2022	913	UB Receipt Surc 30 RES SAL	20220831AC0	R 60-600-44710 Sales Tax Collections
\$16.09	9/1/2022	913	UB Receipt Surc 31 BUSINES	20220831AC0	R 60-600-44710 Sales Tax Collections
\$55.59					
Tran Date 9/2/2022					
\$2.77	9/2/2022	906	UB Receipt Surc 30 RES SAL	20220902E00	R 60-600-44710 Sales Tax Collections
\$7.07	9/2/2022	907	UB Receipt Surc 30 RES SAL	20220902E01	R 60-600-44710 Sales Tax Collections
\$0.86	9/2/2022	907	UB Receipt Surc 31 BUSINES	20220902E01	R 60-600-44710 Sales Tax Collections
\$7.78	9/2/2022	896	UB Receipt Surc 30 RES SAL	2022090201	R 60-600-44710 Sales Tax Collections
\$11.91	9/2/2022	896	UB Receipt Surc 31 BUSINES	2022090201	R 60-600-44710 Sales Tax Collections
\$30.39					
Tran Date 9/6/2022					
\$22.82	9/6/2022	898	UB Receipt Surc 30 RES SAL	20220906E00	R 60-600-44710 Sales Tax Collections
\$15.78	9/6/2022	887	UB Receipt Surc 30 RES SAL	2022090601	R 60-600-44710 Sales Tax Collections
\$5.77	9/6/2022	897	UB Receipt Surc 30 RES SAL	20220906E01	R 60-600-44710 Sales Tax Collections
\$0.51	9/6/2022	901	UB Receipt Surc 30 RES SAL	20220902A00	R 60-600-44710 Sales Tax Collections
-\$0.71	9/6/2022	887	UB Receipt Serv 1 WATER	2022090601	R 60-600-44710 Sales Tax Collections
\$8.91	9/6/2022	887	UB Receipt Surc 31 BUSINES	2022090601	R 60-600-44710 Sales Tax Collections
\$53.08					
Tran Date 9/7/2022					
\$12.42	9/7/2022	881	UB Receipt Surc 31 BUSINES	2022090701	R 60-600-44710 Sales Tax Collections
\$5.17	9/7/2022	881	UB Receipt Surc 30 RES SAL	2022090701	R 60-600-44710 Sales Tax Collections
\$4.44	9/7/2022	894	UB Receipt Surc 30 RES SAL	20220907E01	R 60-600-44710 Sales Tax Collections
\$13.02	9/7/2022	893	UB Receipt Surc 30 RES SAL	20220907E00	R 60-600-44710 Sales Tax Collections
\$35.05					
Tran Date 9/8/2022					

CITY OF CLEVER

RECEIPTS JOURNAL-COUNCIL

10/12/22 2:58 PM
Page 18

Amount	Tran Date	Refer	Comments	Batch Name	Account Descr
\$4.78	9/8/2022	885	UB Receipt Surc 31 BUSINES	20220908E00	R 60-600-44710 Sales Tax Collections
\$0.67	9/8/2022	879	UB Receipt Surc 31 BUSINES	2022090801	R 60-600-44710 Sales Tax Collections
\$7.90	9/8/2022	879	UB Receipt Surc 30 RES SAL	2022090801	R 60-600-44710 Sales Tax Collections
\$0.55	9/8/2022	886	UB Receipt Surc 30 RES SAL	20220908E01	R 60-600-44710 Sales Tax Collections
\$2.32	9/8/2022	885	UB Receipt Surc 30 RES SAL	20220908E00	R 60-600-44710 Sales Tax Collections
<u>\$16.22</u>					
Tran Date 9/12/2022					
\$13.29	9/12/2022	864	UB Receipt Surc 30 RES SAL	2022091201	R 60-600-44710 Sales Tax Collections
\$12.32	9/12/2022	864	UB Receipt Surc 31 BUSINES	2022091201	R 60-600-44710 Sales Tax Collections
\$17.65	9/12/2022	883	UB Receipt Surc 30 RES SAL	20220912E00	R 60-600-44710 Sales Tax Collections
\$12.04	9/12/2022	884	UB Receipt Surc 30 RES SAL	20220912E01	R 60-600-44710 Sales Tax Collections
\$0.73	9/12/2022	883	UB Receipt Surc 31 BUSINES	20220912E00	R 60-600-44710 Sales Tax Collections
<u>\$56.03</u>					
Tran Date 9/13/2022					
\$0.39	9/13/2022	878	UB Receipt Surc 30 RES SAL	20220913E01	R 60-600-44710 Sales Tax Collections
\$0.82	9/13/2022	875	UB Receipt Surc 30 RES SAL	20220913A00	R 60-600-44710 Sales Tax Collections
\$5.45	9/13/2022	877	UB Receipt Surc 30 RES SAL	20220913E00	R 60-600-44710 Sales Tax Collections
<u>\$6.66</u>					
Tran Date 9/14/2022					
\$5.83	9/14/2022	872	UB Receipt Surc 30 RES SAL	20220914E00	R 60-600-44710 Sales Tax Collections
\$0.73	9/14/2022	847	UB Receipt Surc 31 BUSINES	2022091401	R 60-600-44710 Sales Tax Collections
\$11.07	9/14/2022	873	UB Receipt Surc 30 RES SAL	20220914E01	R 60-600-44710 Sales Tax Collections
\$46.48	9/14/2022	874	UB Receipt Surc 30 RES SAL	20220913AC0	R 60-600-44710 Sales Tax Collections
\$14.88	9/14/2022	874	UB Receipt Surc 31 BUSINES	20220913AC0	R 60-600-44710 Sales Tax Collections
\$16.96	9/14/2022	847	UB Receipt Surc 30 RES SAL	2022091401	R 60-600-44710 Sales Tax Collections
<u>\$95.95</u>					
Tran Date 9/15/2022					
\$0.83	9/15/2022	865	UB Receipt Surc 30 RES SAL	20220914A00	R 60-600-44710 Sales Tax Collections
\$10.66	9/15/2022	863	UB Receipt Surc 30 RES SAL	20220915E01	R 60-600-44710 Sales Tax Collections
\$10.89	9/15/2022	862	UB Receipt Surc 30 RES SAL	20220915E00	R 60-600-44710 Sales Tax Collections
<u>\$22.38</u>					
Tran Date 9/16/2022					
\$2.42	9/16/2022	842	UB Receipt Surc 31 BUSINES	2022091601	R 60-600-44710 Sales Tax Collections
\$6.38	9/16/2022	857	UB Receipt Surc 30 RES SAL	20220916E01	R 60-600-44710 Sales Tax Collections
\$11.07	9/16/2022	842	UB Receipt Surc 30 RES SAL	2022091601	R 60-600-44710 Sales Tax Collections
\$14.81	9/16/2022	856	UB Receipt Surc 30 RES SAL	20220916E00	R 60-600-44710 Sales Tax Collections
<u>\$34.68</u>					
Tran Date 9/19/2022					
\$8.11	9/19/2022	852	UB Receipt Surc 30 RES SAL	20220919E00	R 60-600-44710 Sales Tax Collections
\$3.76	9/19/2022	853	UB Receipt Surc 30 RES SAL	20220919E01	R 60-600-44710 Sales Tax Collections
<u>\$11.87</u>					
Tran Date 9/20/2022					
\$1.08	9/20/2022	849	UB Receipt Surc 30 RES SAL	20220920E00	R 60-600-44710 Sales Tax Collections
\$1.83	9/20/2022	826	UB Receipt Surc 30 RES SAL	2022092001	R 60-600-44710 Sales Tax Collections
<u>\$2.91</u>					
Tran Date 9/21/2022					
\$1.52	9/21/2022	844	UB Receipt Surc 30 RES SAL	20220921E00	R 60-600-44710 Sales Tax Collections
\$0.99	9/21/2022	845	UB Receipt Surc 30 RES SAL	20220920A00	R 60-600-44710 Sales Tax Collections

CITY OF CLEVER

RECEIPTS JOURNAL-COUNCIL

10/12/22 2:58 PM
Page 19

Amount	Tran Date	Refer	Comments	Batch Name	Account Descr
\$2.51					
Tran Date 9/22/2022					
\$1.88	9/22/2022	840	UB Receipt Surc 30 RES SAL	20220922E00	R 60-600-44710 Sales Tax Collections
\$1.88					
Tran Date 9/23/2022					
\$0.31	9/23/2022	924	UB Receipt Surc 30 RES SAL	2022092301	R 60-600-44710 Sales Tax Collections
\$0.18	9/23/2022	834	UB Receipt Surc 30 RES SAL	20220923E00	R 60-600-44710 Sales Tax Collections
\$0.36	9/23/2022	835	UB Receipt Surc 30 RES SAL	20220923E01	R 60-600-44710 Sales Tax Collections
\$0.85					
Tran Date 9/26/2022					
\$0.54	9/26/2022	825	UB Receipt Surc 30 RES SAL	20220926E01	R 60-600-44710 Sales Tax Collections
\$1.81	9/26/2022	824	UB Receipt Surc 30 RES SAL	20220926E00	R 60-600-44710 Sales Tax Collections
\$2.35					
Tran Date 9/27/2022					
\$1.39	9/27/2022	921	UB Receipt Surc 30 RES SAL	20220927E00	R 60-600-44710 Sales Tax Collections
\$1.27	9/27/2022	919	UB Receipt Surc 30 RES SAL	20220927A01	R 60-600-44710 Sales Tax Collections
\$2.66					
Tran Date 9/28/2022					
\$2.62	9/28/2022	918	UB Receipt Surc 30 RES SAL	20220928E00	R 60-600-44710 Sales Tax Collections
\$2.62					
Tran Date 9/29/2022					
\$0.76	9/29/2022	933	UB Receipt Surc 30 RES SAL	20220929E01	R 60-600-44710 Sales Tax Collections
\$1.69	9/29/2022	932	UB Receipt Surc 30 RES SAL	20220929E00	R 60-600-44710 Sales Tax Collections
\$2.45					
Tran Date 9/30/2022					
\$5.01	9/30/2022	928	UB Receipt Surc 30 RES SAL	20220930E00	R 60-600-44710 Sales Tax Collections
\$2.36	9/30/2022	929	UB Receipt Surc 30 RES SAL	20220930E01	R 60-600-44710 Sales Tax Collections
\$7.37					
\$443.50					
Tran Date 9/5/2020					
-\$50.00	9/5/2020	959	NSF - CLAY	NSF-CLAY	R 60-600-47520 NSF Checks
-\$50.00					
Tran Date 9/2/2022					
-\$37.11	9/2/2022	956	BURTON- TAKEN OUT OF DE	NSF-BURTON	R 60-600-47520 NSF Checks
-\$37.11					
Tran Date 9/8/2022					
\$27.50	9/8/2022	885	UB Receipt Serv 102 NSF CH	20220908E00	R 60-600-47520 NSF Checks
\$50.00	9/8/2022	885	UB Receipt Serv 16 NSF AMO	20220908E00	R 60-600-47520 NSF Checks
\$77.50					
Tran Date 9/27/2022					
-\$60.13	9/27/2022	858	POWELL - NSF	091422-NSF	R 60-600-47520 NSF Checks
-\$364.62	9/27/2022	891	POWER BLAST CAR WASH	POWERBLAST-	R 60-600-47520 NSF Checks
-\$63.75	9/27/2022	854	ATKINSON - NSF	ATKINSON - N	R 60-600-47520 NSF Checks
-\$52.95	9/27/2022	859	ROGERS - NSF	091422-NSF	R 60-600-47520 NSF Checks
-\$541.45					

CITY OF CLEVER

RECEIPTS JOURNAL-COUNCIL

10/12/22 2:58 PM
Page 20

Amount	Tran Date	Refer	Comments	Batch Name	Account Descr
Tran Date 9/30/2022					
\$27.50	9/30/2022	928	UB Receipt Serv 102 NSF CH	20220930E00	R 60-600-47520 NSF Checks
\$52.95	9/30/2022	928	UB Receipt Serv 16 NSF AMO	20220930E00	R 60-600-47520 NSF Checks
<u>\$80.45</u>					
Tran Date 10/12/2022					
-\$394.62	10/12/2022	891	POWER BLAST CAR WASH	POWERBLAST-	R 60-600-47520 NSF Checks
\$364.62	10/12/2022	891	POWER BLAST CAR WASH	POWERBLAST-	R 60-600-47520 NSF Checks
<u>-\$30.00</u>					
<u>-\$500.61</u>					
Tran Date 9/30/2022					
\$302.22	9/30/2022	953	INTEREST	SEPT22 INT	R 60-600-48000 Interest Income
\$637.26	9/30/2022	949	INTEREST	SEPT22 INT	R 60-600-48000 Interest Income
\$30.56	9/30/2022	948	INTEREST	SEPT22 INT	R 60-600-48000 Interest Income
<u>\$970.04</u>					
<u>\$970.04</u>					
Tran Date 9/30/2022					
\$34.82	9/30/2022	946	INTEREST	SEPT22 INT	R 60-600-48010 Interest Bond Funds
\$56.56	9/30/2022	944	INTEREST	SEPT22 INT	R 60-600-48010 Interest Bond Funds
\$26.61	9/30/2022	945	INTEREST	SEPT22 INT	R 60-600-48010 Interest Bond Funds
\$17.85	9/30/2022	947	INTEREST	SEPT22 INT	R 60-600-48010 Interest Bond Funds
\$524.78	9/30/2022	942	INTEREST	SEPT22 INT	R 60-600-48010 Interest Bond Funds
<u>\$660.62</u>					
<u>\$660.62</u>					
Tran Date 9/6/2022					
\$968.07	9/6/2022	-59	ANTHEM REBATE	09062022	R 60-600-49000 Miscellaneous Income
<u>\$968.07</u>					
<u>\$968.07</u>					
Tran Date 9/27/2022					
\$10,892.68	9/27/2022	830	CI TAX	SEPT 22 ST	R 60-600-49100 1/2% Capital Impro S
<u>\$10,892.68</u>					
<u>\$10,892.68</u>					
Tran Date 9/29/2022					
\$2,250.00	9/29/2022	954	TRANS FROM 110764	9-22BND	R 60-600-49201 2022 WW&SS Bond
<u>\$2,250.00</u>					
<u>\$2,250.00</u>					
<u>\$60,308.87</u>					
<u>\$60,308.87</u>					
FUND 70 Sewer Fund					
PL Type *R Revenue					
Tran Date 9/1/2022					
\$2,054.82	9/1/2022	913	UB Receipt Serv 10 SEWER	20220831AC0	R 70-700-40000 Charge for Service
\$77.52	9/1/2022	912	UB Receipt Serv 10 SEWER	20220901E01	R 70-700-40000 Charge for Service
\$360.94	9/1/2022	911	UB Receipt Serv 10 SEWER	20220901E00	R 70-700-40000 Charge for Service
\$16.00	9/1/2022	913	UB Receipt Serv 15 SEWER-	20220831AC0	R 70-700-40000 Charge for Service
<u>\$2,509.28</u>					

CITY OF CLEVER RECEIPTS JOURNAL-COUNCIL

10/12/22 2:58 PM
Page 21

Amount	Tran Date	Refer	Comments	Batch Name	Account Descr
Tran Date 9/2/2022					
\$455.72	9/2/2022	907	UB Receipt Serv 10 SEWER	20220902E01	R 70-700-40000 Charge for Service
\$367.20	9/2/2022	906	UB Receipt Serv 10 SEWER	20220902E00	R 70-700-40000 Charge for Service
\$567.67	9/2/2022	896	UB Receipt Serv 10 SEWER	2022090201	R 70-700-40000 Charge for Service
<u>\$1,390.59</u>					
Tran Date 9/6/2022					
\$1,228.76	9/6/2022	887	UB Receipt Serv 10 SEWER	2022090601	R 70-700-40000 Charge for Service
\$57.66	9/6/2022	901	UB Receipt Serv 10 SEWER	20220902A00	R 70-700-40000 Charge for Service
\$1,164.60	9/6/2022	898	UB Receipt Serv 10 SEWER	20220906E00	R 70-700-40000 Charge for Service
\$351.09	9/6/2022	897	UB Receipt Serv 10 SEWER	20220906E01	R 70-700-40000 Charge for Service
-\$19.95	9/6/2022	887	UB Receipt Serv 1 WATER	2022090601	R 70-700-40000 Charge for Service
<u>\$2,782.16</u>					
Tran Date 9/7/2022					
\$727.45	9/7/2022	893	UB Receipt Serv 10 SEWER	20220907E00	R 70-700-40000 Charge for Service
\$232.98	9/7/2022	894	UB Receipt Serv 10 SEWER	20220907E01	R 70-700-40000 Charge for Service
\$397.43	9/7/2022	881	UB Receipt Serv 10 SEWER	2022090701	R 70-700-40000 Charge for Service
<u>\$1,357.86</u>					
Tran Date 9/8/2022					
\$536.02	9/8/2022	879	UB Receipt Serv 10 SEWER	2022090801	R 70-700-40000 Charge for Service
\$279.68	9/8/2022	885	UB Receipt Serv 10 SEWER	20220908E00	R 70-700-40000 Charge for Service
\$67.18	9/8/2022	886	UB Receipt Serv 10 SEWER	20220908E01	R 70-700-40000 Charge for Service
<u>\$882.88</u>					
Tran Date 9/12/2022					
\$630.02	9/12/2022	884	UB Receipt Serv 10 SEWER	20220912E01	R 70-700-40000 Charge for Service
\$1,048.44	9/12/2022	864	UB Receipt Serv 10 SEWER	2022091201	R 70-700-40000 Charge for Service
\$984.46	9/12/2022	883	UB Receipt Serv 10 SEWER	20220912E00	R 70-700-40000 Charge for Service
<u>\$2,662.92</u>					
Tran Date 9/13/2022					
\$28.52	9/13/2022	878	UB Receipt Serv 10 SEWER	20220913E01	R 70-700-40000 Charge for Service
\$54.50	9/13/2022	875	UB Receipt Serv 10 SEWER	20220913A00	R 70-700-40000 Charge for Service
\$258.92	9/13/2022	877	UB Receipt Serv 10 SEWER	20220913E00	R 70-700-40000 Charge for Service
<u>\$341.94</u>					
Tran Date 9/14/2022					
\$526.99	9/14/2022	873	UB Receipt Serv 10 SEWER	20220914E01	R 70-700-40000 Charge for Service
\$425.15	9/14/2022	872	UB Receipt Serv 10 SEWER	20220914E00	R 70-700-40000 Charge for Service
\$3,212.19	9/14/2022	874	UB Receipt Serv 10 SEWER	20220913AC0	R 70-700-40000 Charge for Service
\$2,056.39	9/14/2022	847	UB Receipt Serv 10 SEWER	2022091401	R 70-700-40000 Charge for Service
<u>\$6,220.72</u>					
Tran Date 9/15/2022					
\$653.45	9/15/2022	862	UB Receipt Serv 10 SEWER	20220915E00	R 70-700-40000 Charge for Service
\$632.70	9/15/2022	863	UB Receipt Serv 10 SEWER	20220915E01	R 70-700-40000 Charge for Service
\$44.24	9/15/2022	865	UB Receipt Serv 10 SEWER	20220914A00	R 70-700-40000 Charge for Service
<u>\$1,330.39</u>					
Tran Date 9/16/2022					
\$978.19	9/16/2022	856	UB Receipt Serv 10 SEWER	20220916E00	R 70-700-40000 Charge for Service
\$395.91	9/16/2022	857	UB Receipt Serv 10 SEWER	20220916E01	R 70-700-40000 Charge for Service
\$772.08	9/16/2022	842	UB Receipt Serv 10 SEWER	2022091601	R 70-700-40000 Charge for Service

CITY OF CLEVER

RECEIPTS JOURNAL-COUNCIL

10/12/22 2:58 PM
Page 22

Amount	Tran Date	Refer	Comments	Batch Name	Account Descr
<u>\$2,146.18</u>					
Tran Date 9/19/2022					
\$604.19	9/19/2022	852	UB Receipt Serv 10 SEWER	20220919E00	R 70-700-40000 Charge for Service
<u>\$176.59</u>	9/19/2022	853	UB Receipt Serv 10 SEWER	20220919E01	R 70-700-40000 Charge for Service
\$780.78					
Tran Date 9/20/2022					
\$92.16	9/20/2022	849	UB Receipt Serv 10 SEWER	20220920E00	R 70-700-40000 Charge for Service
<u>\$146.91</u>	9/20/2022	826	UB Receipt Serv 10 SEWER	2022092001	R 70-700-40000 Charge for Service
\$239.07					
Tran Date 9/21/2022					
\$72.10	9/21/2022	845	UB Receipt Serv 10 SEWER	20220920A00	R 70-700-40000 Charge for Service
<u>\$105.73</u>	9/21/2022	844	UB Receipt Serv 10 SEWER	20220921E00	R 70-700-40000 Charge for Service
\$177.83					
Tran Date 9/22/2022					
<u>\$128.89</u>	9/22/2022	840	UB Receipt Serv 10 SEWER	20220922E00	R 70-700-40000 Charge for Service
\$128.89					
Tran Date 9/23/2022					
\$15.97	9/23/2022	834	UB Receipt Serv 10 SEWER	20220923E00	R 70-700-40000 Charge for Service
\$34.96	9/23/2022	924	UB Receipt Serv 10 SEWER	2022092301	R 70-700-40000 Charge for Service
<u>\$24.48</u>	9/23/2022	835	UB Receipt Serv 10 SEWER	20220923E01	R 70-700-40000 Charge for Service
\$75.41					
Tran Date 9/26/2022					
\$28.58	9/26/2022	825	UB Receipt Serv 10 SEWER	20220926E01	R 70-700-40000 Charge for Service
<u>\$142.39</u>	9/26/2022	824	UB Receipt Serv 10 SEWER	20220926E00	R 70-700-40000 Charge for Service
\$170.97					
Tran Date 9/27/2022					
\$14.32	9/27/2022	922	UB Receipt Serv 10 SEWER	20220927E01	R 70-700-40000 Charge for Service
\$91.37	9/27/2022	919	UB Receipt Serv 10 SEWER	20220927A01	R 70-700-40000 Charge for Service
<u>\$110.01</u>	9/27/2022	921	UB Receipt Serv 10 SEWER	20220927E00	R 70-700-40000 Charge for Service
\$215.70					
Tran Date 9/28/2022					
<u>\$129.51</u>	9/28/2022	918	UB Receipt Serv 10 SEWER	20220928E00	R 70-700-40000 Charge for Service
\$129.51					
Tran Date 9/29/2022					
\$119.52	9/29/2022	932	UB Receipt Serv 10 SEWER	20220929E00	R 70-700-40000 Charge for Service
<u>\$45.31</u>	9/29/2022	933	UB Receipt Serv 10 SEWER	20220929E01	R 70-700-40000 Charge for Service
\$164.83					
Tran Date 9/30/2022					
\$267.69	9/30/2022	928	UB Receipt Serv 10 SEWER	20220930E00	R 70-700-40000 Charge for Service
<u>\$166.03</u>	9/30/2022	929	UB Receipt Serv 10 SEWER	20220930E01	R 70-700-40000 Charge for Service
\$433.72					
<u>\$24,141.63</u>					
Tran Date 9/29/2022					
\$2,250.00	9/29/2022	954	TRANS FROM 110764	9-22BND	R 70-700-49201 2022 WW&SS Bond
<u>\$2,250.00</u>					

CITY OF CLEVER
RECEIPTS JOURNAL-COUNCIL

10/12/22 2:58 PM
Page 23

Amount	Tran Date	Refer	Comments	Batch Name	Account Descr
\$2,250.00					
\$26,391.63					
\$26,391.63					
\$167,498.42					

(([Act Year]='22-23' and [period] in (3)) and ([Tran Nbr] like '[1]*'))

WATER/
WWTP

October 2022 Council Report

The water system is working as it should with no new leaks to report. We do have a meter valve that we have found that is broke off and can not be shut off. The owner of the building is needing it shut off for repairs, so I have contacted Jolly Excavation to come out and dig up the meter and replace the valve. We would do it in house, but with as much other stuff that we have going with the sewer system and me taking three days off next week it we needed to contact Jolly. We also took a couple of days to clean and repaint the pipes in the well houses to keep them from rusting and looking good.

We are assisting Clean Stream with smoke testing this week. On the first day of testing, we found 55 defects, with most of the being sewer clean out caps. Last time we smoke tested Council wanted us to fix all the caps, so we have already begun that process as well. We will continue to smoke test until the rest of the town is complete and we will fix all the caps as quick as possible after that. We have also found a couple of sewer manhole lids that are leaking. Once we see how many lids are leaking for sure we will get the stuff to fix them. I am hoping we will see a significant decrease in inflow and infiltration, and see the flows go down at the plant after this. As we have said we will never stop it all, but every little bit helps. After we have all the defects fixed, we will send that information to DNR, so they know we are working on the issues.

Streets, Parks, and Grounds

As I noted last month, I had a community service worker painting at the park. He was able to get all the equipment and the pavilion painted. I also had him to pressure wash the entire basketball court and repaint it. I think the park looks a lot better. They have delayed our playground equipment until December now. They are having trouble getting metal pipe in. I am staying in touch with the sales rep and hopefully we stay on track for the December time frame.

We are going to be getting all the winter equipment out soon and going through it to make sure it is all running and ready for winter. Hopefully, we have a fall this year and we have plenty of time before it gets cold, but we know how Missouri is.

As always please contact me with any questions or concerns,

Ronnie Keithley Jr

Public Works Director



CLEAN STREAM ENTERPRISE LLC

Bert Bond

102 E. Brown Clever Mo. 65631
Phone 417-693-3590
bond8x11@yahoo.com

October 14, 2022

SEPTEMBER SEWER REPORT

Clever Council,

We ran a total of 3,569,800 gallons thru the plant in September, with an average daily flow of 118,900 gallons and a one day peak flow of 211,500 gallons.

31,500 gallons of sludge was spread on a farmer's field.

The plant achieved a 98% BOD removal rate for the month and a 98% removal rate for TSS.

The last of the wiring was ran and connected to the return station and a Fluid Equipment Technician is tentatively scheduled to check the controls and do start up in two weeks.

The final VFD we need for the 85 side of the plant is scheduled to be installed the week of the 24th by a Cogent Technician.

The remaining four basins were smoke tested this week completing the entire town. At this writing the defect count is at 88 and that number will go up as all the data is compiled into a final report. I would also like to note Public Works has already repaired approximately 16 of the defects found.

Any question or concerns contact me anytime at 693-3590.

Bert Bond.

Director's Report

DISTRIBUTION EFFICIENCY SUMMARY

	Gallons	Percent
Water Supplied to System	6,625,598	100.0%
Water Sold to Customers	5,802,796	87.6%
Utility Use (fire, flushing)	300,000	4.5%
Water Lost	-522,802	7.9%
Average Use Per Account	5,046	
Accounts Using Water	1,150	

	WATER	TRASH	PRIMACY	RES SALES	BUSINESS S	SEWER
Charges	\$28,176.89	\$14,844.40	\$532.92	\$420.15	\$112.96	\$25,928.82
Count	1150	1059	1140	1081	37	1130
Average	\$24.50	\$14.02	\$0.47	\$0.39	\$3.05	\$22.95

CITY OF CLEVER ADJUSTMENT REPORT

09/27/22 12:42 PM

Page 1

Account	Billing Name	Date	Charge Name	Amount	Comment	Type
00-00002323-05-3	HOLLOWAY, DAKOTA	09/13/22	SEWER	(\$48.34)	wasn't living there anymore	Adjustment
00-00002805-02-5	HATFIELD, MARY	08/26/22		(\$5.31)	DEP OVERAGE	Adjustment
00-00002224-01-5	WARD, RYAN & TIFFANY	08/26/22		(\$12.84)	DEP OVERAGE	Adjustment
00-00001378-05-4	WATSON, JEREMY	08/26/22		(\$19.77)	DEP OVERAGE	Adjustment
01-00002161-00-5	MILLER, KIM & CHARLES	08/30/22		\$13.71	applied late fee when paid	Adjustment
01-00003031-00-8	CLAY, GLENDA	09/02/22	NSF AMOUNT	\$50.00	ECHECK NSF	Adjustment
01-00003031-00-8	CLAY, GLENDA	09/02/22	NSF CHARGE	\$27.50		Adjustment
01-00002069-01-9	POWER BLAST CARWASH	09/07/22	NSF AMOUNT	\$394.62	echek nsf	Adjustment
01-00002069-01-9	POWER BLAST CARWASH	09/07/22	NSF CHARGE	\$27.50		Adjustment
00-00000876-00-3	RIDER, CHARLES & ROBE	09/13/22		(\$12.58)	dep overage	Adjustment
00-00000951-02-5	CROSSROADS COFFEE C	08/26/22		(\$78.13)	DEP OVERAGE	Adjustment
01-00002890-02-8	HANSON, PHILIP & CAME	09/13/22		\$78.61	dep overage transfer from old	Adjustment
01-00001911-00-7	RUNNER, BEN	09/22/22	WATER	(\$4.66)	miscalculate	Adjustment
00-00002059-02-8	WOODS, SAMUEL & MARI	09/14/22		(\$60.00)	dep overage	Adjustment
00-00001325-01-4	MCHOLLAND, FAITH & B	09/14/22		(\$15.22)	dep overage	Adjustment
00-00002041-01-4	ARBUCKLE, DUSTIN	09/14/22		(\$120.00)	dep overage	Adjustment
01-00002705-01-6	POWELL JR, JAMES & AN	09/16/22	NSF AMOUNT	\$60.13	ach nsf	Adjustment
01-00002705-01-6	POWELL JR, JAMES & AN	09/16/22	NSF CHARGE	\$27.50		Adjustment
01-00003691-00-8	ROGERS, BRADON & ALY	09/16/22	NSF AMOUNT	\$52.95	ach nsf	Adjustment
01-00003691-00-8	ROGERS, BRADON & ALY	09/16/22	NSF CHARGE	\$27.50		Adjustment
01-00004101-00-5	ATKINSON, JOHNNY& KA	09/16/22	NSF AMOUNT	\$70.13	ach nsf plus late fee	Adjustment
01-00004101-00-5	ATKINSON, JOHNNY& KA	09/16/22	NSF CHARGE	\$27.50		Adjustment
00-00002166-02-5	HANSON, PHILIP & CAME	09/13/22		(\$78.61)	dep overage transfer to new ad	Adjustment
				\$402.19		

CITY OF CLEVER
AGED ACCOUNTS

09/27/22 12:40 PM
Page 1

Account	Full Billing Name	3 Per Full Overdue Property Address
00-00002323-05-3	HOLLOWAY, DAKOTA	\$29.81 201 S PUBLIC
00-00002964-05-8	CANTRELL, TERIN	\$23.41 217 EAGLE CIRCLE
00-00001222-01-4	DRISKILL PROPERTIES	\$61.15 312 W NAVAJO CIRCLE
00-00001931-01-5	SEATON, CHRISTOPHER	\$289.44 132 E MEADOWBROOK AVE
00-00001785-00-7	BRUCE, RANDALL & JENNIFER	\$16.10 406 LYNN DRIVE
00-00002827-01-0	NOE, REGINA & JAMES	\$79.35 103 E NOLA STREET
00-00002299-01-1	BODENHAMER, KYLE	\$33.08 709 W LAKE
00-00002770-04-0	BRIZENDINE, AMANDA	\$14.07 227 EAGLE CIRCLE
01-00002765-00-1	JOHNSON, DAVID	\$162.00 203 E TEAKWOOD
01-00002345-00-7	HUGHEY, CASEY & SHAWN	\$73.98 108 S INMON
		\$782.39

COURT

MUNICIPAL DIVISION SUMMARY REPORTING FORM

Refer to instructions for directions and term definitions. Complete a report each month even if there has not been any court activity.

<u>I. COURT INFORMATION</u>		Municipality: Clever Municipal		Reporting Period: Sep 1, 2022 - Sep 29, 2022	
Mailing Address: 304 SOUTH CLARK AVENUE, PO BOX 52, CLEVER, MO 65631					
Physical Address: 304 SOUTH CLARK AVENUE, PO BOX 52, CLEVER, MO 65631				County: Christian County	
				Circuit: 38	
Telephone Number: (417)7432544			Fax Number:		
Prepared by: KRISTY KEITHLEY			E-mail Address:		
Municipal Judge:					
<u>II. MONTHLY CASELOAD INFORMATION</u>					
			Alcohol & Drug Related Traffic	Other Traffic	Non-Traffic Ordinance
A. Cases (citations/informations) pending at start of month			1	187	22
B. Cases (citations/informations) filed			0	65	1
C. Cases (citations/informations) disposed					
1. jury trial (Springfield, Jefferson County, and St. Louis County only)			0	0	0
2. court/bench trial - GUILTY			0	0	0
3. court/bench trial - NOT GUILTY			0	0	0
4. plea of GUILTY in court			0	18	0
5. Violations Bureau Citations (i.e. written plea of guilty) and bond forfeiture by court order (as payment of fines/costs)			0	13	0
6. dismissed by court			0	0	0
7. <i>nolle prosequi</i>			0	11	0
8. certified for jury trial (not heard in Municipal Division)			0	0	0
9. TOTAL CASE DISPOSITIONS			0	42	0
D. Cases (citations/informations) pending at end of month [pending caseload = (A+B)-C9]			1	210	23
E. Trial de Novo and/or appeal applications filed			0	0	0
<u>III. WARRANT INFORMATION (pre- & post-disposition)</u>					
1. # Issued during reporting period			9	<u>IV. PARKING TICKETS</u>	
2. # Served/withdrawn during reporting period			12	<input type="checkbox"/> Court staff does not process parking tickets	
3. # Outstanding at end of reporting period			112		

MUNICIPAL DIVISION SUMMARY REPORTING FORM

COURT INFORMATION	Municipality: Clever Municipal	Reporting Period: Sep 1, 2022 - Sep 29, 2022
--------------------------	--------------------------------	--

V. DISBURSEMENTS

Excess Revenue (minor traffic and municipal ordinance violations, subject to the excess revenue percentage limitation)		Other Disbursements: Enter below additional surcharges and/or fees not listed above. Designate if subject to the excess revenue percentage limitation. Examples include, but are not limited to, arrest costs and witness fees.	
Fines - Excess Revenue	\$2,035.50	Court Automation	\$241.56
Clerk Fee - Excess Revenue	\$379.60	Total Other Disbursements	\$241.56
Crime Victims Compensation (CVC) Fund surcharge - Paid to City/Excess Revenue	\$12.77	Total Disbursements of Costs, Fees, Surcharges and Bonds Forfeited	\$3,124.50
Bond forfeitures (paid to city) - Excess Revenue	\$0.00	Bond Refunds	\$0.00
Total Excess Revenue	\$2,427.87	Total Disbursements	\$3,124.50
Other Revenue (non-minor traffic and ordinance violations, not subject to the excess revenue percentage limitation)			
Fines - Other	\$0.00		
Clerk Fee - Other	\$0.00		
Judicial Education Fund (JEF) <input type="checkbox"/> Court does not retain funds for JEF	\$34.51		
Peace Officer Standards and Training (POST) Commission surcharge	\$34.51		
Crime Victims Compensation (CVC) Fund surcharge - Paid to State	\$246.05		
Crime Victims Compensation (CVC) Fund surcharge - Paid to City/Other	\$0.00		
Law Enforcement Training (LET) Fund surcharge	\$70.00		
Domestic Violence Shelter surcharge	\$0.00		
Inmate Prisoner Detainee Security Fund surcharge	\$70.00		
Restitution	\$0.00		
Parking ticket revenue (including penalties)	\$0.00		
Bond forfeitures (paid to city) - Other	\$0.00		
Total Other Revenue	\$455.07		

STREETS

PARKS

GROUND

PLANNING
&
ZONING

AN ORDINANCE OF THE CITY OF CLEVER, MISSOURI ACCEPTING AND APPROVING THE REPLAT AND ZONING OF LOTS 1 THRU 12 OF BLOCK 1 AND THE VACATED ALLEY AND ALL OF LOTS 1 THRU 6 OF BLOCK 4, ALONG WITH THE VACATED RIGHTS-OF-WAY OF MITCHELL STREET AND GOULD STREET OF DEEDS PROPOSED ADDITION TO CLEVER SUBDIVISION AND ALSO LYING IN THE SOUTHWEST QUARTER OF THE SOUTHEAST QUARTER OF SECTION 20, TOWNSHIP 27 NORTH, RANGE 23 WEST: NOW KNOWN AS CASON'S CORNER, IN THE CITY OF CLEVER, CHRISTIAN COUNTY, MISSOURI.

WHEREAS: The proposed property complies with the following described land to be within the city limits of the City of Clever, Missouri in Christian County, Missouri as presented for the acceptance at the duly called meeting of the Clever Board of Aldermen.

NEW DESCRIPTION OF LOTS

LOT 1A:

A TRACT OF LAND LYING IN DEED'S PROPOSED ADDITION TO CLEVER AS DESCRIBED IN THE CHRISTIAN COUNTY MISSOURI RECORDER'S OFFICE IN PLAT BOOK C, PAGE 25 AND ALSO LYING IN THE SOUTHWEST QUARTER OF THE SOUTHEAST QUARTER OF SECTION 20, TOWNSHIP 27 NORTH, RANGE 23 WEST AS DESCRIBED IN CHRISTIAN COUNTY, MISSOURI RECORDER'S OFFICE IN BOOK 2020, PAGE 755 AND SAID TRACT BEING MORE PARTICULARLY DESCRIBED AS FOLLOWS: ALL OF LOTS 1 THROUGH 12 OF BLOCK 1 OF DEED'S PROPOSED ADDITION TO CLEVER AS DESCRIBED IN THE CHRISTIAN COUNTY MISSOURI RECORDER'S OFFICE IN PLAT BOOK C, PAGE 25, INCLUDING THE VACATED ALLEY, ALL OF VACATED MITCHELL STREET FROM THE NORTH RIGHT-OF-WAY OF WEST GRANT STREET TO THE CENTER OF VACATED GOULD STREET AND THE SOUTH HALF OF VACATED GOULD STREET FROM THE EAST RIGHT-OF-WAY OF THE VACATED MITCHELL STREET TO THE EAST RIGHT-OF-WAY OF SULLIVAN ROAD. CONTAINING 123,802 SQUARE FEET OR 2.84 ACRES, MORE OR LESS. ALL LYING IN THE SOUTHWEST QUARTER OF THE SOUTHEAST QUARTER OF SECTION 20, TOWNSHIP 27 NORTH, RANGE 23 WEST IN THE CITY OF CLEVER, CHRISTIAN COUNTY, MISSOURI. NEW ZONING FOR LOT 1A WILL BE COMMERCIAL.

LOT 2A:

A TRACT OF LAND LYING IN DEED'S PROPOSED ADDITION TO CLEVER AS DESCRIBED IN THE CHRISTIAN COUNTY MISSOURI RECORDER'S OFFICE IN PLAT BOOK C, PAGE 25 AND ALSO LYING IN THE SOUTHWEST QUARTER OF THE SOUTHEAST QUARTER OF SECTION 20, TOWNSHIP 27 NORTH, RANGE 23 WEST AS DESCRIBED IN CHRISTIAN COUNTY, MISSOURI RECORDER'S OFFICE IN BOOK 2020, PAGE 755 AND SAID TRACT BEING MORE PARTICULARLY DESCRIBED AS FOLLOWS: ALL OF LOTS 1 THROUGH 6 OF BLOCK 4 OF DEED'S PROPOSED ADDITION TO CLEVER AS DESCRIBED IN THE CHRISTIAN COUNTY MISSOURI RECORDER'S OFFICE IN PLAT BOOK C, PAGE 25. CONTAINING 46,770 SQUARE FEET OR 1.07 ACRES, MORE OR LESS. ALL LYING IN THE SOUTHWEST QUARTER OF THE SOUTHEAST QUARTER OF SECTION 20, TOWNSHIP 27 NORTH, RANGE 23 WEST IN THE CITY OF CLEVER, CHRISTIAN COUNTY, MISSOURI. NEW ZONING FOR LOT 2A WILL BE R-1b RESIDENTIAL.

WHEREAS: a public hearing concerning said matter was held at City Hall in Clever, Missouri, at 6:30 pm on September 22, 2022; and

WHEREAS: notice of said Public hearing was given by publication of the notice, on September 7, 2022 in the Christian County Headliner a newspaper of general circulation in the County of Christian, State of Missouri and a notice was posted in at least two other places within the City of Clever, Missouri; and

WHEREAS: at said Public Hearing, all interested persons, corporations or political subdivisions were afforded the opportunity to present evidence regarding the proposed zoning; and

WHEREAS: NO written responses to the proposed zoning were filed or sent to the Board of Aldermen of the City of Clever, Missouri, within fourteen days after the public hearing; and

WHEREAS: Said plat was presented to the Board of Aldermen of the City of Clever, Missouri for approval and acceptance as a subdivision of land within the City and

WHEREAS: The Board of Aldermen of the City of Clever, Missouri, does find and determine that said zoning is reasonable and necessary to the proper development of the City; and

THEREFORE: BE IT ORDAINED BY THE BOARD OF ALDERMAN OF THE CITY OF CLEVER, COUNTY OF CHRISTIAN, STATE OF MISSOURI, AS FOLLOWS:

SECTION I: The Mayor and the City Clerk are hereby authorized and directed to endorse acceptance of said property and to certify the acceptance and approval of said property under the seal of the City of Clever on any and all documents as necessary.

SECTION II: The City Clerk of the City of Clever is hereby ordered to produce two (2) certified copies of this ordinance; one copy to be filed with the Christian County Clerk and one copy to be filed with the Christian County Recorder's Office.

SECTION III: This ordinance shall be in full force and effect from and after its passage and approval.

FIRST READING BY TITLE WITH COPIES AVAILABLE TO THE PUBLIC HELD ON THIS 18th DAY OF OCTOBER 2022.

	Aye	Nay
Alderman MAISEL	_____	_____
Alderman LARSON	_____	_____
Alderman SCHMIDT	_____	_____
Alderman MCPHAIL	_____	_____

SECOND READING AND FINAL PASSAGE HERE ON THIS 18TH DAY OF OCTOBER 2022.

	Aye	Nay
Alderman MAISEL	_____	_____
Alderman LARSON	_____	_____
Alderman SCHMIDT	_____	_____
Alderman MCPHAIL	_____	_____

Date Approved_____

SCOTT HACKWORTH, Mayor

Attest:

KRISTY KEITHLEY, City Clerk

CASON'S CORNER

A REPLAT OF LOTS 1 THRU 12 OF BLOCK 1 AND THE VACATED ALLEY AND ALL OF LOTS 1 THRU 6 OF BLOCK 4, ALONG WITH THE VACATED RIGHTS-OF-WAY OF MITCHELL STREET AND GOULD STREET OF DEEDS PROPOSED ADDITION TO CLEVER SUBDIVISION AND ALSO LYING IN THE SOUTHWEST QUARTER OF THE SOUTHEAST QUARTER OF SECTION 20, TOWNSHIP 27 NORTH, RANGE 23 WEST, IN THE CITY OF CLEVER, CHRISTIAN COUNTY, MISSOURI



LOCATION SKETCH
SEC. 20, T27N, R23W
NOT TO SCALE

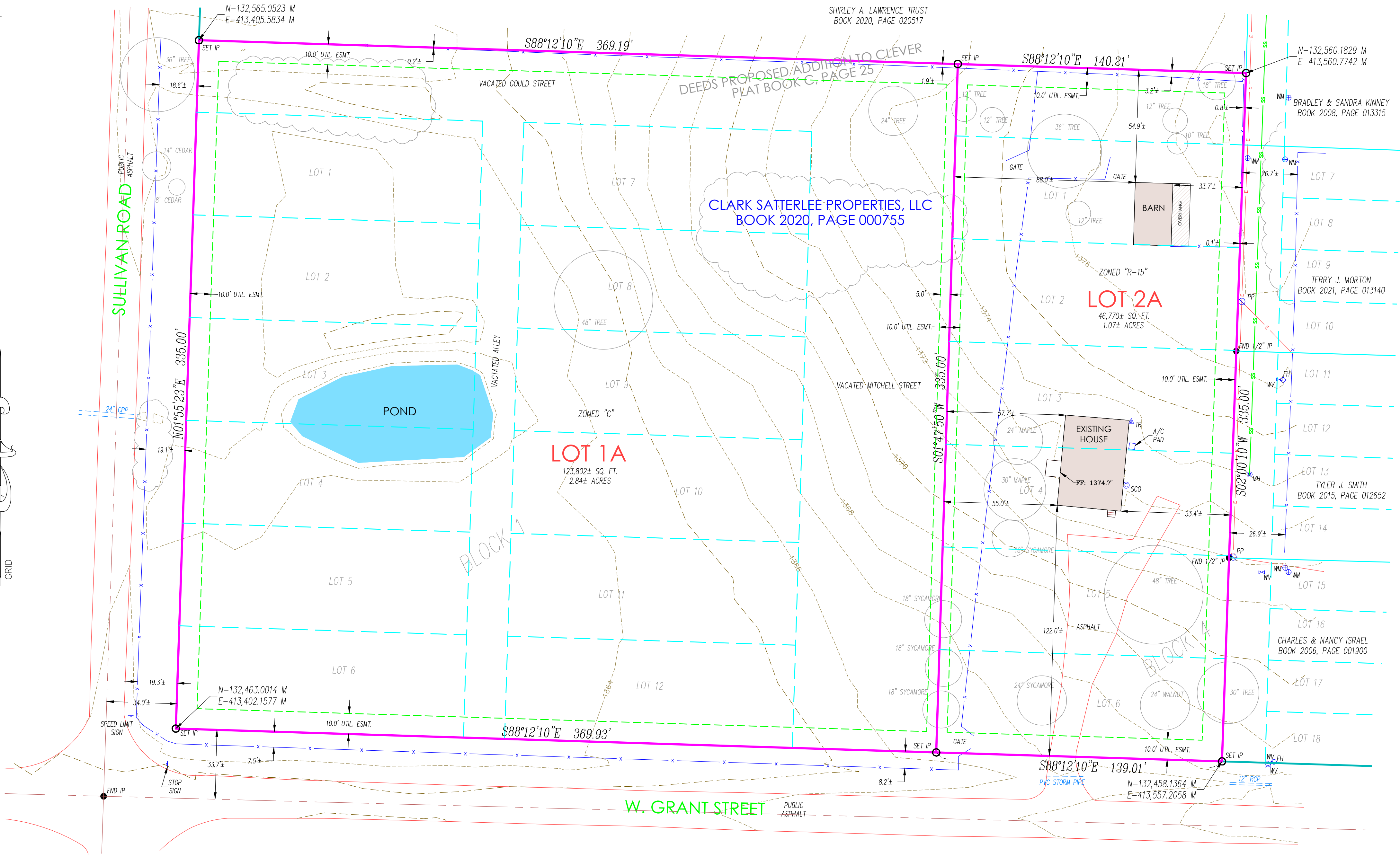


LEGEND

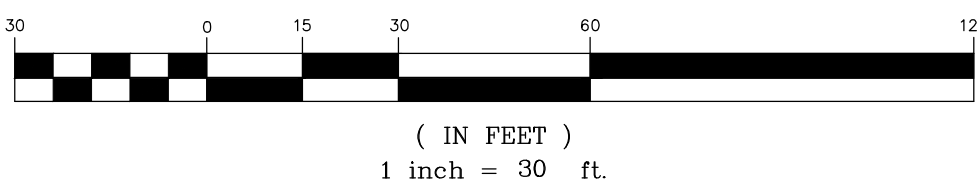
- CP CONTROL POINT
 - FND IP FOUND IRON PIN
 - SET IP SET IRON PIN
 - RWM RIGHT-OF-WAY MARKER
 - PP POWER POLE W/ GUY
 - MH MANHOLE
 - SCO SEWER CLEANOUT
 - GM GAS METER
 - LP LIGHT POLE
 - SG SIGN
 - WM WATER METER
 - WV WATER VALVE
 - GV GAS VALVE
 - FH FIRE HYDRANT
 - TR TELEPHONE RISER
 - BP BUMPER POST
 - IG GRATE INLET
 - TL TREELINE
 - BUSH
 - ER ELECTRICAL RISER
 - TS TRAFFIC SIGNAL BOX
 - EM ELECTRIC METER
 - MB MAIL BOX
 - BH BOREHOLE
 - ICV IRRIGATION CONTROL VALVE
- PROPERTY LINE
- SANITARY SEWER
- STORM SEWER
- TELEPHONE LINE
- UNDERGROUND TELEPHONE
- GAS LINE
- WATER LINE
- OVERHEAD ELECTRIC LINE
- UNDERGROUND ELECTRIC
- FENCE LINE
- RETAINING WALL
- LINE LABELS
- MEASURED DEED 100' M
- MEASURED PLAT 100' M

NOTES

COORDINATE PAIRS ON SURVEY ARE SHOWN IN METERS
METERS TO U.S. FEET CONVERSION 3.28083333 "GRID"



GRAPHIC SCALE



CERTIFICATE OF DEDICATION

STATE OF MISSOURI)
COUNTY OF CHRISTIAN)

I, _____, HAVE CAUSED THE LAND DESCRIBED ON THIS PLAT TO BE SURVEYED, DIVIDED, MAPPED, AND ALL ACCESS RIGHTS RESERVED AND DEDICATED AS REPRESENTED ON THE PLAT. I, _____, HEREBY DEDICATE, GRANT AND CONVEY RIGHT-OF-WAY AND EASEMENTS SHOWN HEREON TO THE CITY OF CLEVER, FURTHERMORE, I, _____, CERTIFY THAT THERE ARE NO SUITS, ACTIONS, LIENS, OR TRUSTS ON THE PROPERTY CONVEYED HEREIN, AND WARRANT GENERALLY AND SPECIFICALLY THE PROPERTY CONVEYED FOR PUBLIC USE AND WILL EXECUTE SUCH FURTHER ASSURANCES AS MAY BE REQUIRED.

(OWNER SIGNATURE) - PRINT NAME UNDERNEATH LINE (OWNER SIGNATURE) - PRINT NAME UNDERNEATH LINE

(TITLE - IF APPROPRIATE) (TITLE - IF APPROPRIATE)

APPROVAL BY CITY COUNCIL

I, _____, CITY CLERK FOR THE CITY OF CLEVER CHRISTIAN COUNTY, MISSOURI, DO HEREBY CERTIFY THAT THE, _____, WAS PRESENTED TO, ACCEPTED AND APPROVED BY THE CITY COUNCIL OF SAID CITY OF CLEVER, AND APPROVED BY GENERAL ORDINANCE NUMBER _____, ON THE DAY _____ OF _____, 20____.

CITY CLERK DATE

CERTIFICATE OF COMPLIANCE WITH ZONING AND SUBDIVISION REGULATIONS

I, _____, CITY CLERK FOR THE CITY OF CLEVER, MISSOURI, DO HEREBY CERTIFY THAT THE WITHIN ON THE _____ DAY OF _____, 20____, CONFORMS TO THE CITY OF CLEVER LAND USE REGULATIONS, IN ACCORDANCE WITH THE CLEVER CODE OF ORDINANCES.

ACKNOWLEDGEMENT

STATE OF MISSOURI (SS)
COUNTY OF CHRISTIAN
ON THIS _____ DAY OF _____, IN THE YEAR _____, BEFORE ME, THE UNDERSIGNED NOTARY PUBLIC, PERSONALLY APPEARED _____, KNOWN TO ME TO BE THE PERSON(S) WHOSE NAME(S) IS/ARE SUBSCRIBED TO THE WITHIN INSTRUMENT AND ACKNOWLEDGED THE HE/SHE/THEY EXECUTED THE SAME FOR THE PURPOSES THEREIN CONTAINED, IN WITNESS WHEREOF, I HERETO SET MY HAND AND SEAL.

NOTARY PUBLIC

COLLECTOR'S STATEMENT

I HEREBY CERTIFY ON THIS _____ DAY OF _____, 20____, THAT ALL TAXES OWED ON PARCEL # _____ HAVE BEEN PAID.

COUNTY COLLECTOR

ZONING DATA

LOT 1A IS PROPOSED TO BE ZONED C (COMMERCIAL)
BUILDING SETBACK REQUIREMENTS:
FRONT YARD: 25 FEET
SIDE YARD: NONE
REAR YARD: 30 FEET

LOT 2A IS ZONED R-16 (RESIDENTIAL)
BUILDING SETBACK REQUIREMENTS:
FRONT YARD: 25 FEET
SIDE YARD: 10 FEET
REAR YARD: 25 FEET

COA #000082



FIELD: CB DATE: 08-25-2022
DRAWN: GAS FIELD BK: N/A
CHECKED: KRP JOB NO: 22SP10131

22SP10131
SHT. 1 OF 1 REV.

FLOOD NOTE:

BY GRAPHIC PLATTING ONLY, THIS PROPERTY IS IN ZONE X OF THE FLOOD INSURANCE RATE MAP, COMMUNITY PANEL NO. 290430000C, WHICH BEARS AN EFFECTIVE DATE OF DECEMBER 17, 2010, AND IS NOT IN A SPECIAL FLOOD HAZARD AREA, NO FIELD SURVEYING WAS PERFORMED TO DETERMINE THIS.

SURVEYORS NOTE:

WITH THIS SURVEY WE DO NOT GUARANTEE THAT OWNERSHIP IS TO THE SURVEY LINES DEPICTED HEREON. THIS SURVEY IS A GRAPHIC REPRESENTATION OF THE OPINION OF THE SURVEYOR AS TO THE LOCATION OF THE RECORD DESCRIPTION. NO OPINION AS TO THE VALIDITY OF TITLE IS GIVEN OR IMPLIED.

UTILITY NOTE:

THIS SURVEY REFLECTS ABOVE GROUND INDICATIONS OF UTILITIES AND INFORMATION AVAILABLE FROM UTILITY COMPANIES. THE SURVEYOR MAKES NO GUARANTEE THAT THE UNDERGROUND UTILITIES SHOWN COMPRISE ALL SUCH UTILITIES IN THE AREA, EITHER IN SERVICE OR ABANDONED. THE SURVEYOR FURTHER DOES NOT WARRANT THAT THE UNDERGROUND UTILITIES SHOWN ARE IN THE EXACT LOCATION INDICATED, ALTHOUGH HE DOES CERTIFY THAT THEY ARE LOCATED AS ACCURATELY AS POSSIBLE FROM INFORMATION AVAILABLE. THE SURVEYOR HAS NOT PHYSICALLY LOCATED THE UNDERGROUND UTILITIES.

LOT 1A DESCRIPTION

A TRACT OF LAND LYING IN DEEDS PROPOSED ADDITION TO CLEVER AS DESCRIBED IN THE CHRISTIAN COUNTY, MISSOURI RECORDER'S OFFICE IN PLAT BOOK C, PAGE 25 AND ALSO LYING IN THE SOUTHWEST QUARTER OF THE SOUTHEAST QUARTER OF SECTION 20, TOWNSHIP 27 NORTH, RANGE 23 WEST AS DESCRIBED IN CHRISTIAN COUNTY, MISSOURI RECORDER'S OFFICE IN BOOK 2020, PAGE 755 AND SAID TRACT BEING MORE PARTICULARLY DESCRIBED AS FOLLOWS:

ALL OF LOTS 1 THROUGH 12 OF BLOCK 1 OF DEEDS PROPOSED ADDITION TO CLEVER AS DESCRIBED IN THE CHRISTIAN COUNTY, MISSOURI RECORDER'S OFFICE IN PLAT BOOK C, PAGE 25, INCLUDING THE VACATED ALLEY, ALL OF VACATED MITCHELL STREET FROM THE NORTH RIGHT-OF-WAY OF WEST GRANT STREET TO THE CENTER OF VACATED GOULD STREET AND THE SOUTH HALF OF VACATED GOULD STREET FROM THE EAST RIGHT-OF-WAY OF THE VACATED MITCHELL STREET TO THE EAST RIGHT-OF-WAY OF SULLIVAN ROAD, CONTAINING 123,802 SQUARE FEET OR 2.84 ACRES, MORE OR LESS, ALL LYING IN THE SOUTHWEST QUARTER OF THE SOUTHEAST QUARTER OF SECTION 20, TOWNSHIP 27 NORTH, RANGE 23 WEST IN THE CITY OF CLEVER, CHRISTIAN COUNTY, MISSOURI.

LOT 2A DESCRIPTION

A TRACT OF LAND LYING IN DEEDS PROPOSED ADDITION TO CLEVER AS DESCRIBED IN THE CHRISTIAN COUNTY, MISSOURI RECORDER'S OFFICE IN PLAT BOOK C, PAGE 25 AND ALSO LYING IN THE SOUTHWEST QUARTER OF THE SOUTHEAST QUARTER OF SECTION 20, TOWNSHIP 27 NORTH, RANGE 23 WEST AS DESCRIBED IN CHRISTIAN COUNTY, MISSOURI RECORDER'S OFFICE IN BOOK 2020, PAGE 755 AND SAID TRACT BEING MORE PARTICULARLY DESCRIBED AS FOLLOWS:

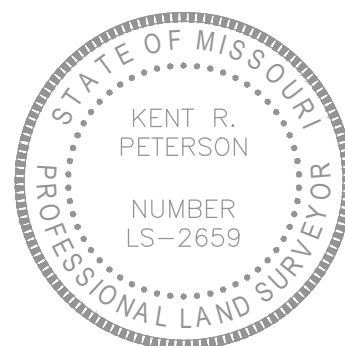
ALL OF LOTS 1 THROUGH 6 OF BLOCK 4 OF DEEDS PROPOSED ADDITION TO CLEVER AS DESCRIBED IN THE CHRISTIAN COUNTY, MISSOURI RECORDER'S OFFICE IN PLAT BOOK C, PAGE 25, CONTAINING 46,770 SQUARE FEET OR 1.07 ACRES, MORE OR LESS, ALL LYING IN THE SOUTHWEST QUARTER OF THE SOUTHEAST QUARTER OF SECTION 20, TOWNSHIP 27 NORTH, RANGE 23 WEST IN THE CITY OF CLEVER, CHRISTIAN COUNTY, MISSOURI.

SURVEYOR'S DECLARATION

I, THE UNDERSIGNED, DO HEREBY DECLARE THAT THE BOUNDARY SURVEY SHOWN HEREON WAS MADE UNDER MY SUPERVISION AND TO THE BEST OF MY KNOWLEDGE THE INFORMATION IS AS SHOWN AND IN ACCORDANCE WITH THE CURRENT MINIMUM STANDARDS FOR URBAN PROPERTY SURVEYS, DRAWING LAST REVISED ON SEPTEMBER 26, 2022.

ANDERSON ENGINEERING, INC. LC 62
BY:

Kent R. Peterson
KENT R. PETERSON P.L.L.C. 2659



9-26-2022
DATE

POLICE

ADMIN