



Clay Township

Recreation Plan 2017-2021

Prepared by: Clay Township Recreation Advisory Committee
Adopted by: Clay Township Board
Assisted by: Giffels Webster | Clearzoning, Inc.
Adopted:

Prepared by Clay Township

Planning Commission

Kathie Schweikart, Acting Chairperson
Christine Holcomb, Secretary
Mark Borchardt
Lesly Cahill
Keith Fell
Edward Keller II
Tom Kozel
Joanne Shirkey
Whitey Simon

Board of Trustees

Artie Bryson, Township Supervisor
Cindy Valentine, Clerk
Thomas H. Krueger, Treasurer
Joanne Shirkey
John M. Horvath
Tom Fetter
Karen Straffon

Recreation Coordinator

Cindy Babisz

Assisted by:

Giffels Webster
6303 26 Mile Road, Suite 100
Washington Twp, MI 48094
p 586.781.8950
www.giffelswebster.com

Clay Township

Recreation Plan 2017-2021

Table of Contents

Community Description	1
Administrative Structure	7
Parks & Recreation Inventory	9
Resource Inventory	27
Recreation Needs Analysis	41
Planning Process	45
Goals & Objectives	47
Action Strategies	51
Appendix	55

In loving memory of

Tony Antkowiak

1941–2016

1

Community Description

Clay Township prepared this Recreation Plan to:

- Create an inventory of existing parks and recreation facilities in and around the Township.
- Gain community input on parks and recreation strengths and weaknesses.
- Develop goals and objectives that will lead to future improvements.

This plan will address parks located within and under the jurisdiction of Clay Township. All aspects of recreation will be evaluated through the planning process. The previous Recreation Plan, completed in 2011, will be reviewed; any remaining goals that are still pertinent will be detailed. New objectives will be added as appropriate.

Community Profile

Clay Township is located in southern St. Clair County and possesses a long stretch of shoreline of the St. Clair River and Lake St. Clair. Access to the region is provided by M-29 and Marine City Highway; I-94 runs within nearly 14 miles of the Township's northwestern corner.

The Township is bordered by Ira Township and Cottrellville Township to the north, while the remainder of the Township is surrounded by the St. Clair River or Lake St. Clair. The Township surrounds the City of Algonac. Clay Township is approximately 83 square miles, with 36 square miles of land and 47 square miles of water.

Population

The estimated 2014 population for Clay Township was 8,856, down from 9,066 in 2010. From 1970 through 2000, the township had experienced an upswing in population, reaching its peak 9,822 residents. From 2000 to 2010 the population declined by 8%. The Southeast Michigan Council of Governments (SEMCOG) projects the Township’s population to slightly decline to 8,885 residents by 2040.

The number of households has remained steady over the past ten years as well, from 5,631 to 5,630. The Household size has decreased slightly from 2.29 to 2.20 persons. The Township’s residents are split fairly evenly between males and females.

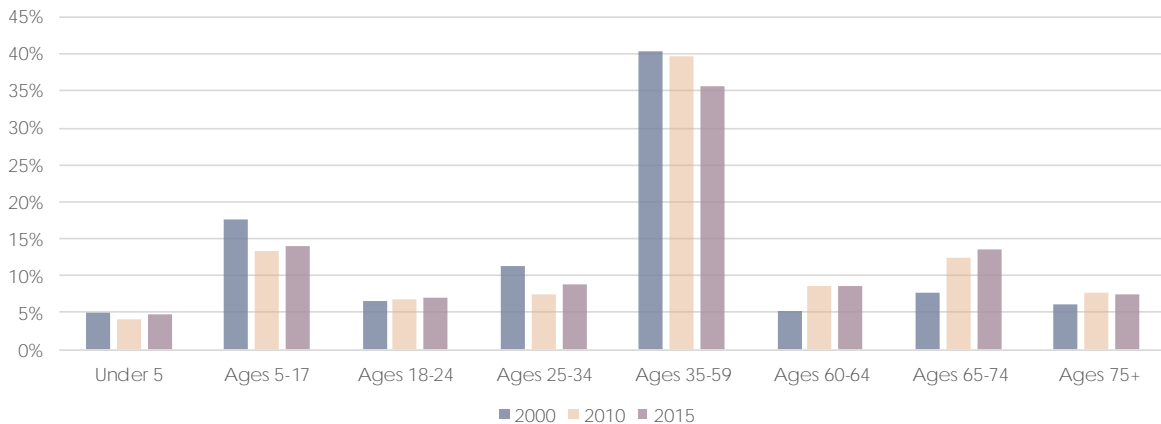
While the Township’s population has decreased, there has been increased in certain population segments, particularly in children under 5, adults aged 25-34, and those aged 65-74. From 2000 to 2010, the Census reports the median age increased from 40.9 to 48.8 years. SEMCOG projects that the population segment that is likely to grow the fastest are those aged 75 and older—in Clay Township as well as in the region and the country.

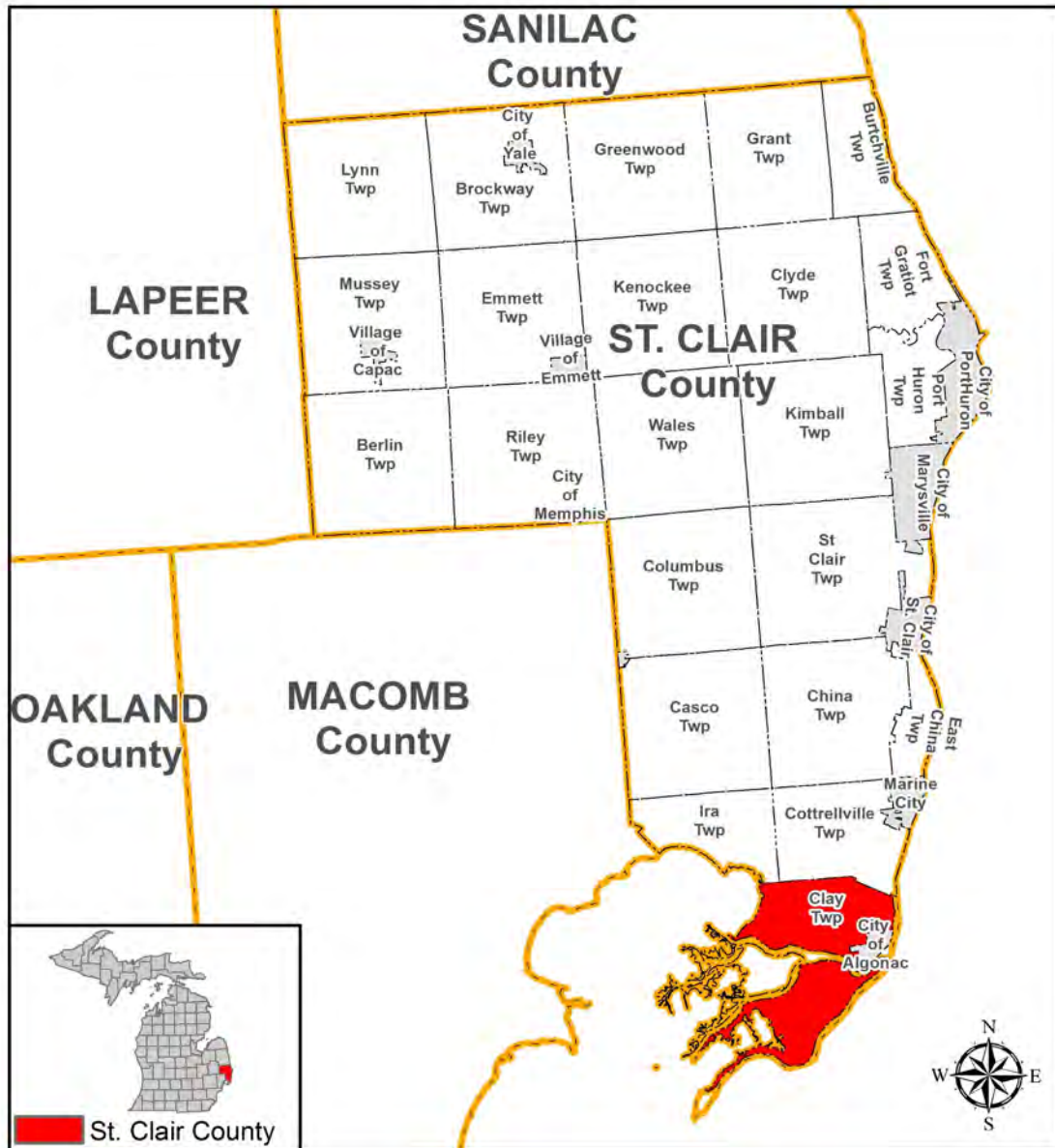
In St. Clair County, the 55+ population rose from 22,811 in 2000 to 24,471 in 2013. SEMCOG projects this population segment to nearly double to 42,022 by 2040. This increase in the senior population is not only due to the aging Baby Boomer segment, but also is due to our population living longer and a lower overall birth rate. This growing segment of the Township’s population will play a role in the planning of recreation needs now and in the future.

Land Use & Zoning

Clay Township’s population is concentrated in the area along the shoreline, where many small lots line

Clay Township Age Distribution 2000–2015





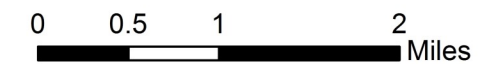
the St. Clair River and the canals of the North Channel. Industrial and commercial development, as well as marinas, are found along Pointe Tremble Rd. The vast majority of the Township’s large-lot residential development, agriculture, and vacant land can be found to the north portion of the mainland, as well parts of Harsens Island, Dickinsen Island, and Middle Island. About 5.2% of the Township’s area is roads.

Less than 50% of the Township’s land is considered developed. Park, recreation, and open space use is the largest segment of land use, with approximately 42% of total land use. Most of the Township’s developed land is located along Pointe Tremble Road, which generally runs parallel to the Lake St. Clair shoreline. The next largest land-use is single-family residential at 35.3%, followed by government/institutional (12.1%) and agricultural (5.4%).

Clay Township St. Clair County, Michigan

- RS-1 Rural Suburban
- RS-2 Rural Suburban
- R-1L One Family Residential
- R-1 One Family Residential
- R-2 One Family Residential
- R-3 One Family Residential
- R-4 Perch Point Isles Residential
- RM Multiple Family Residential
- MHP Mobile Home Park
- C-1 Business Office District
- C-2 Small Business District
- C-3 General Business District
- I-1 Industrial District
- I-2 Industrial District

Official Zoning Map



clearzoning | giffels webster
 Created September 15, 2016
 Sources: St Clair County GIS,
 Michigan Geographic Data Library,
 Clay Township



Intentionally left blank

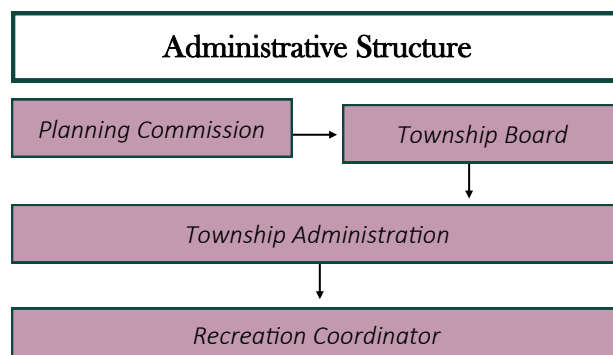
2

Administrative Structure

Clay Township’s parks and recreation programming falls under the responsibility of the Township Supervisor and the Recreation Coordinator.

The Recreation Plan is developed by Planning Commission, which advises the Township Board on the recreation needs of the Township. The purpose of the plan is to identify the Township’s near- and long-term recreation needs and develop a program to address these needs.

The total Township budget for Parks & Recreation for fiscal 2015/2016 was \$122,500. Expenditures through March 31, 2016 were \$336,566.72 The 2016/2017 budget is \$88,226.96.



St. Clair County has established a millage for recreation at a rate of 50 cents for every \$1,000 of State Equalized Valuation (SEV), or ½ mill. A percentage of this money (25%) is returned to each community on a per capita basis for local recreation projects; the remaining 75% is used for County Park funding and development. The local share of the millage are then returned to each Community directly.

Table 1. Clay Township Parks and Recreation Budget

	FY: 2015-2016	FY: 2016-2017
Employee/Labor Expenses	\$0.00	\$27,821.54
Capital outlays under \$5k	\$0.00	\$2,500.00
Engineering Fees	\$2,000.00	\$2,500.00
Detroit Edison	\$7,000.00	\$7,000.00
Water/Sewer	\$3,000.00	\$3,500.00
Maintenance	\$17,000.00	\$12,000.00
Miscellaneous	\$3,500.00	\$3,000.00
Contingency Fund	\$0.00	\$405.42
Capital Outlays Over \$5K	\$90,000.00	\$30,000.00
TOTAL	\$122,500.00	\$88,226.96

3

Parks & Recreation Inventory

Clay Township residents have access to a variety of recreation opportunities. Within the Township, the Township Hall Park offers a variety of activities, including a pathway, playground, pavilion, splash pad, and a volleyball court. The Pearl Beach Pier also offers residents an opportunity to fish and relax near the shore. The Michigan Department of Natural Resources (MDNR) also operates a boat launch within the Township, and athletic facilities are available at several schools. A portion of the St. John's Marsh State Wildlife Area is located within the Township's southeastern corner.

Beyond the Township's limits, St. Clair County, the Huron-Clinton Metropolitan Authority and the State of Michigan offer numerous recreation opportunities within a short drive of Clay Township. These other facilities offer many activities not available at Township recreation facilities, including swimming, horseback riding, game areas, hiking, camping, museums, butterfly gardens, and off-road bicycling. Private recreation opportunities in neighboring townships include golf courses and gun clubs.

Various methods were employed to assess local recreational facilities including a review of aerials and existing maps, w\surveys, site visits, and discussions with recreational providers. The primary methods used to assess the usability of the Clay Township Hall Park and Pearl Beach Pier were walking tours and input from actual park users. The inventory that follows provides a detailed look at the amenities available at the Township park facilities, as well as the local schools, and an overview of golf courses, private recreation areas, and regional parks in the area.

Clay Township Parks

Township Hall Park Site

Established in 2010, this park is located adjoining the Township Hall. The acre park provides activities for all ages, including a splash pad, playground, volleyball court, pavilion, and walking paths.

Type	Community Park
Size	7.5 acres
Accessibility Rating	4

Amenities
Looped pathway
Playground
Pavilion
Concession Stand
Volleyball Court
Basketball Court
Splash Pad
Restrooms
Dedicated off-street parking
Stationary grills



Clay Township Parks

Pearl Beach Pier

This Township pier is located at the end of Pearl Beach Blvd., behind Gabriel Marine . It is a popular spot for anglers and boat watchers.

Type	Mini Park
Size	0.6 acres
Accessibility Rating	4

Amenities
Fishing Pier
Benches
Parking Lot

The Township received a DNR Passport Grant to rebuild the pier into a small park, in order to remedy outstanding safety issues and provide enhancements. The development will take place over the course of two phases.

Phase 1 will include resurfacing the 315 foot pier, installing low level light and security cameras, as well as swimming ladders, hand rails, and mooring pilings

Phase 2 will be the development of the end of Pearl Beach Blvd. for parking and outdoor furniture. Plans include ADA accessibility.



DNR Grant Inventory:

Project #: 13-484

Name: Pearl Beach Park Pier Reconstruction

Year: 2013

Scope: \$45,000—Development to include reconstruction of the existing Pearl Beach Park Pier

Status: Grant returned, project completed through Township funding

Barrier-Free Analysis

A critical component in planning for recreation facilities is providing barrier-free access to accommodate the needs of both physically and mentally challenged visitors. Barrier-free access includes, but is not limited to, ensuring that adequate barrier-free parking spaces, sidewalks, trails, picnic tables, and playground equipment are provided for renovated or new recreational facilities. Standards from The Accessibility Checklist, a guidebook founded upon the Uniform Federal Accessibility Standards (UFAS) and the codes and standards of the Americans with Disabilities Act (ADA), were used to verify barrier-free compliance.

The MDNR Guidelines require that a barrier-free ranking be given to each facility for assessing its accessibility to persons with disabilities. The assessment considers the accessibility of both the facilities themselves as well as the access routes to them. The following system, provided by the *MDNR Guidelines for the Development of Community Park, Recreation, Open Space and Greenway Plans (01/27/06)*, was used to assess each park:

Rank 1: None of the facilities / park areas meet accessibility guidelines.

Rank 2: Some of the facilities / park areas meet accessibility guidelines.

Rank 3: Most of the facilities / park areas meet accessibility guidelines.

Rank 4: The entire park meets accessibility guidelines.

Rank 5: The entire park was developed / renovated using the principals of universal design.

Accessibility

The U.S. Access Board is designated by the Americans with Disabilities Act (ADA) as the agency responsible for developing minimum accessibility guidelines to ensure that new construction and alteration of facilities covered by ADA are accessible and useable by people with disabilities. The Access Board has published the following guidelines that should be used by Access to Recreation applicants to determine the criteria they must exceed to achieve universal accessibility:

- Americans with Disabilities Act Accessibility Guidelines (ADAAG) 2002:
www.access-board.gov/adaag/html/adaag.htm
- Recommendations for Accessibility Guidelines for Outdoor Developed Areas:
www.access-board.gov/outdoor/outdoor-rec-rpt.htm

The National Center on Accessibility is a collaborative program of Indiana University and the National Park Service and also provides information on access for people with disabilities in recreation.

www.ncaonline.org

Accessibility: Barrier Free Analysis

Township Hall Park

Overall rating: 4 (see details next page)

Pearl Beach Pier

Overall rating: 5 (See details next page)

Improvements to Target

In Clay Township, there are general improvements that could be made to each park that would make the parks more accessible:

- Consider accessibility features such as an enhanced entrance, such as non-slip ramps, and transitional pathways from general park circulation to play equipment at the Township Hall Park
- Provide restrooms at Pearl Beach Pier
- Provide an accessible connection from pier to pedestrian walkways.

Barrier-Free Analysis: Township Hall Park

Park Name: Township Hall Park

Overall Park Rating: 4

Parking

- Yes** Accessible parking spaces are provided and marked with International Symbol of Accessibility.
- Yes** Accessible parking is as near to the park entrance as possible.

Play Areas

- No** There is an accessible route (60 inches wide) to the entrance of the play area with a slope no steeper than 1:16.
- No** For playground equipment, at least one turning space is provided on the same level as play components.
- Yes** Play area surface is firm and stable (mulch/woodchips, sand and gravel are not accessible surfaces)
- No** Where multiple swings in a swing bay are provided, one swing is located on an accessible route.
- Yes** For court sports, at least one accessible route connects both sides of the court.

Park Amenities

- Yes** Picnic tables provide at least one wheelchair space for each 24 linear feet of usable table surface perimeter. The aisles between chairs and tables are 3 feet wide.
- Yes** Drinking fountain spout outlets are a maximum of 36 inches above the finish floor or ground.
- Yes** Safety is promoted by good street lighting.
- No** Ramps are non-slip.
- Yes** If public restroom facility present, there is at least one fully accessible restroom.

Trails and Sidewalks

- Yes** There is a path of travel that does not require the use of stairs.
- Bike paths are separate from pedestrian walkways.
- Yes** Sidewalks are free of obstruction, wide enough for wheelchairs, solid (not made of dirt), and have curb cuts.
- No** All stairways feature a railing and stair tips that are painted to distinguish each step.
- Handrails are provided on both sides of a ramp.
- Yes** Accessible routes connect all park amenities and coincide with general circulation paths.

Accessibility: Pearl Beach Pier

Park Name: Pearl Beach Pier

Overall Park Rating: 4

Parking

- Yes** Accessible parking spaces are provided and marked with International Symbol of Accessibility.
- Yes** Accessible parking is as near to the park entrance as possible.

Play Areas

- There is an accessible route (60 inches wide) to the entrance of the play area with a slope no steeper than 1:16.
- For playground equipment, at least one turning space is provided on the same level as play components.
- Play area surface is firm and stable (mulch/woodchips, sand and gravel are not accessible surfaces)
- Where multiple swings in a swing bay are provided, one swing is located on an accessible route.
- For court sports, at least one accessible route connects both sides of the court.

Park Amenities

- Picnic tables provide at least one wheelchair space for each 24 linear feet of usable table surface perimeter. The aisles between chairs and tables are 3 feet wide.
- Drinking fountain spout outlets are a maximum of 36 inches above the finish floor or ground.
- Yes** Safety is promoted by good street lighting.
- Yes** Ramps are non-slip.
- No** If public restroom facility present, there is at least one fully accessible restroom.

Trails and Sidewalks

- Yes** There is a path of travel that does not require the use of stairs.
- Bike paths are separate from pedestrian walkways.
- Yes** Sidewalks are free of obstruction, wide enough for wheelchairs, solid (not made of dirt), and have curb cuts.
- Yes** All stairways feature a railing and stair treads that are painted to distinguish each step.
- Yes** Handrails are provided on both sides of a ramp.
- No** Accessible routes connect all park amenities and coincide with general circulation paths.

Programming and Partnerships

Programs

Clay Township hosts events year-round at Township Hall Park, including:

- Farmers Market
- Music in the Park
- Winterfest
- Outdoor Movie Night

Partnerships

Role of Volunteers

Volunteers are welcome and critical to recreational offerings in the Township, especially as the Township begins rebuilding programs, activities and special events.

Volunteer availability is a concern. The Township tries to encourage Boy and Girl Scout, Student Council, National Honor Society, and retiree involvement.

Partnerships with Schools, Public Agencies, and Other Insitutions

Clay Township was previously involved in an intergovernmental agreement with the City of Algonac and the School District partnered through that created Downriver Recreation Commission, which is no longer in existence. This entity also held a partnership with the county health department and many other organizations. Clay Township is open to renewing that agreement and is in the process of reviewing possibilities.

The Township continues to be receptive to any joint ventures with past and new partnerships. As of 2016 the Township is currently in the process of developing and strengthening partnerships with the Algonac School District, the Blueways of St. Clair, and the Michigan DNR, among many others.

Local Schools and Other Local Facilities

Schools

Clay Township is within the Algonac School District, which includes Algonac High School, Algonquin Middle School, and Millside Elementary School. The Township has no formal recreation partnerships with any of the three schools .

Algonac High Schools

- 1 baseball field
- 1 softball field
- 1 track
- Athletic field
- 4 tennis courts
- Playground

Algonquin Middle School

- 4 softball diamonds
- 1 baseball diamond
- Playground
- Athletic field

Millside Elementary School

- Playground

Other Facilities

Harsens Island Lions Club

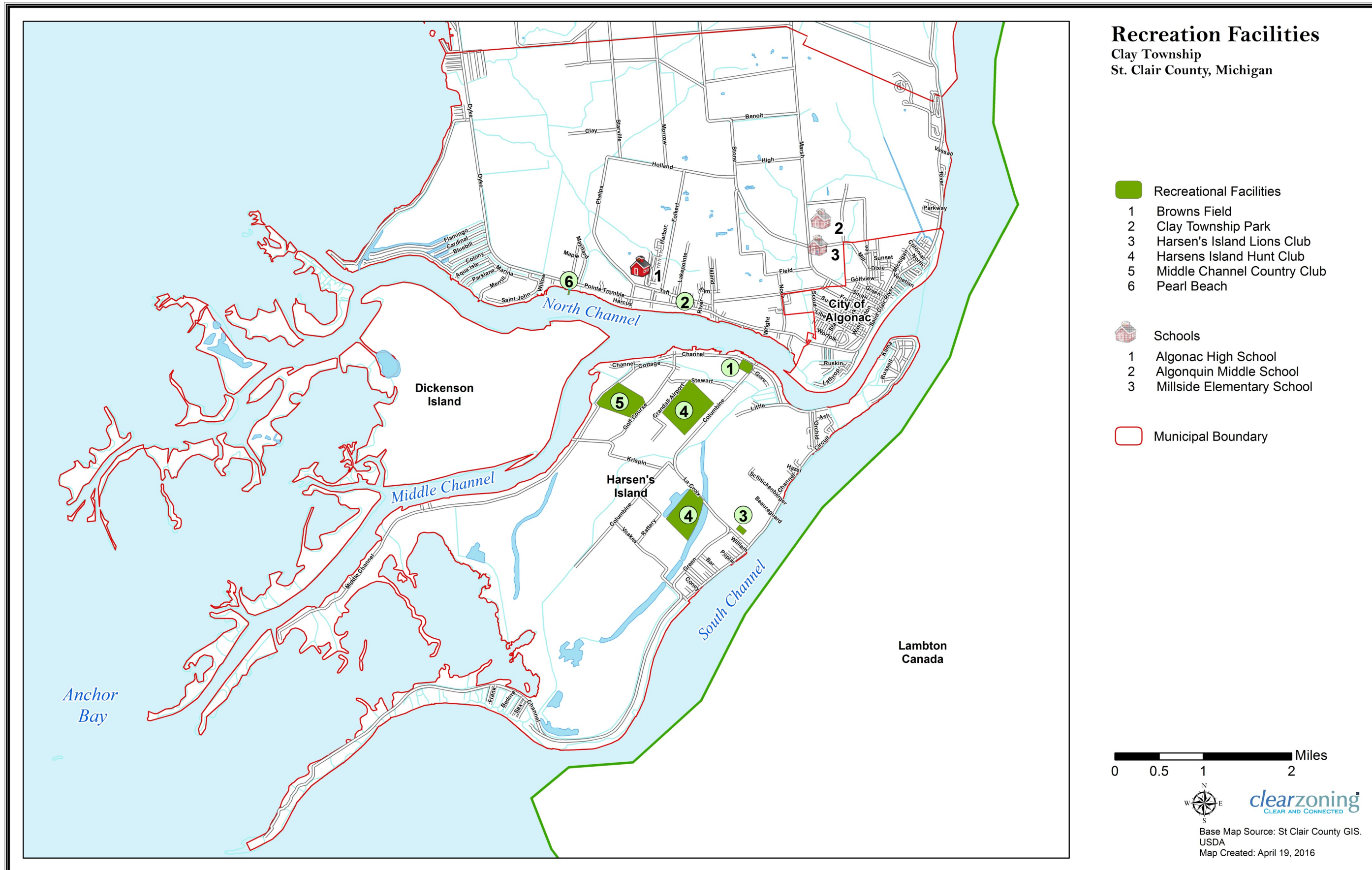
- Located on Harsens Island
- Approximately 14 acre open area
- 3 trap houses

Harsens Island Association—Browne’s Field

- 14 acre semi-public park
- Intended for island residents
- Playground
- 1 softball diamond
- 1 picnic pavilion
- 2 tennis courts
- Athletic field

The Old Club

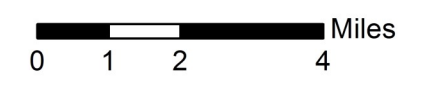
- 3 tennis courts
- 9-hole golf course
- Trap shooting range



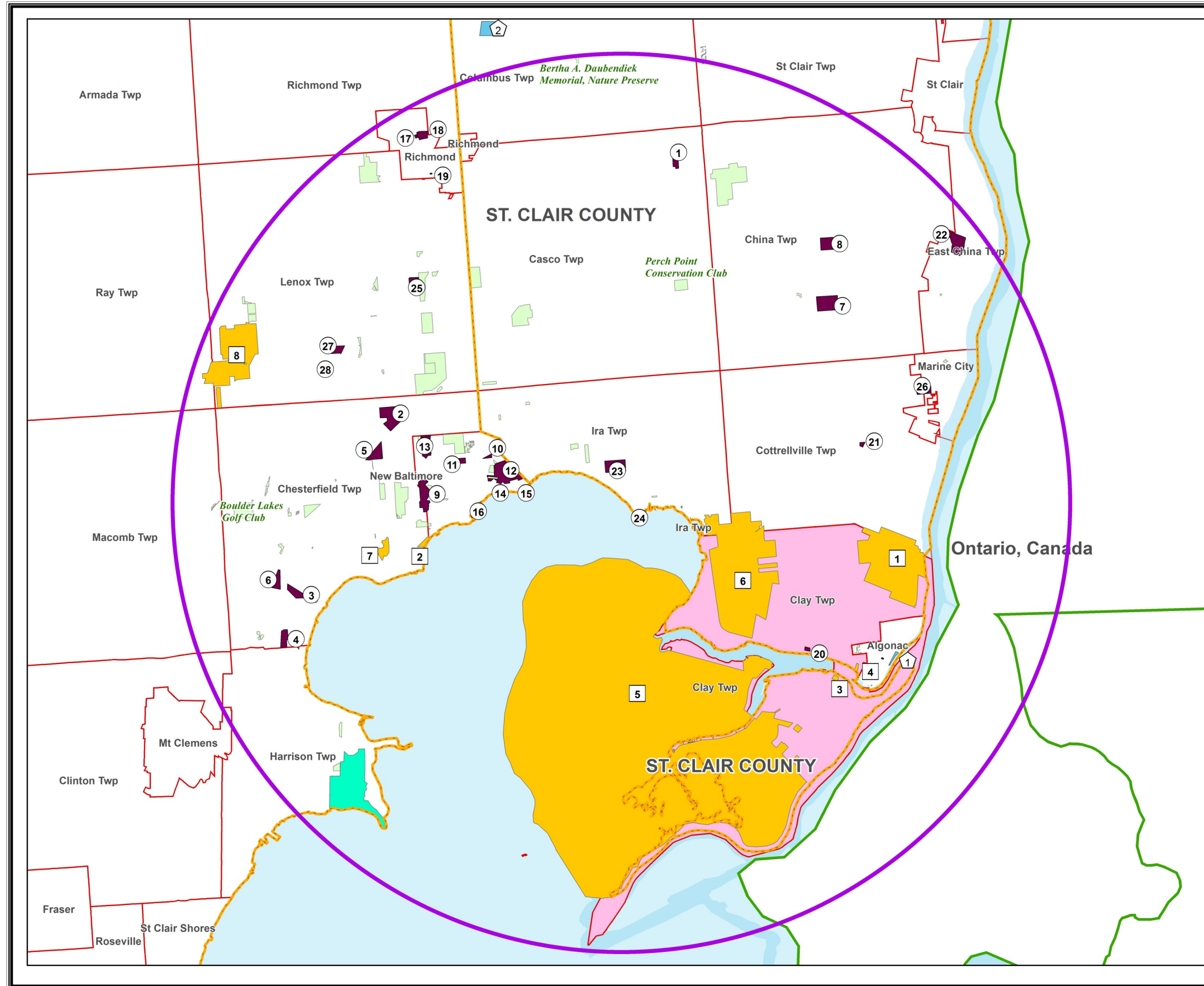
Intentionally left blank

Regional Parks Clay Township St. Clair County, Michigan

- State Parks
 - 1 Algonac State Park
 - 2 Brandenburg Park
 - 3 Browns Field
 - 4 Boat Launches and Small Parks
 - 5 St. Clair Flats State Wildlife Area
 - 6 St. Johns Marsh State Wildlife Area
 - 7 Salt River Marsh State Wildlife Area
 - 8 Wetzel State Park
- Metro Beach Metropark (Huron Clinton Metropark Authority)
- County Parks
 - 1 Algonac County Park
 - 2 Columbus County Park
- Local Parks
 - Casco Township Parks
 - 1 Casco Township Park
 - Chesterfield Township Parks
 - 2 Bertha M. Pollard Park
 - 3 Chesterfield Township Park
 - 4 Community Center Park
 - 5 Mount Trashmore
 - 6 North Lagoons Property
 - China Township Parks
 - 7 Indian Trail Road Park
 - 8 Township Hall Park
 - City of New Baltimore Parks
 - 9 24 Mile Road Park Site
 - 10 County Line Park
 - 11 Festival Park - Proposed
 - 12 Green Street Woods Park - Proposed
 - 13 Homestead Wetland Park
 - 14 Reginald Brady Park
 - 15 Reudisale Point Park
 - 16 Walter and Mary Burke Park (Downtown Park)
 - City of Richmond Parks
 - 17 Baily Park
 - 18 Beebe Park and Jack Davidson Memorial Field
 - 19 Gierk Street Park
 - Clay Township Parks
 - 20 Clay Township Park
 - Cottrellville Township Parks
 - 21 Cottrellville Township Park
 - East China Township Parks
 - 22 Township Park
 - Ira Township Parks
 - 23 Ira Township Park
 - 24 Water Works Park
 - Lenox Township Parks
 - 25 Lenox Township Community Center and Park
 - Marine City Parks
 - 26 King Road Park
 - Village of New Haven Parks
 - 27 New Haven Village Park
 - 28 Downtown New Haven Park
- Conservation Easements, Private Parks and Facilities



Base Map Source: St Clair County GIS.
Ducks Unlimited
Map Created: April 19, 2016



Intentionally left blank

Regional Facilities

State Parks, Game Areas and Wildlife Areas

There are numerous state parks and recreation areas located in Southeast Michigan. These facilities provide opportunities for hiking, swimming, fishing, boating, picnicking, camping, cross-country skiing, and other recreational opportunities. Several large state facilities are located in St. Clair and northern Macomb Counties.

Lakeport State Park

Lakeport State Park is on the Lake Huron shore in far northern St. Clair County. The park includes a beach, campgrounds, picnic areas, playgrounds, and cabins.

Algonac State Park

Located along the St. Clair River, Algonac State Park features unique habitats, campgrounds and trails.

St. John’s Marsh Wildlife Area

St. John’s Marsh is a managed hunting unit of the St. Clair Flats State Wildlife Area. It includes two large wildlife refuges and hunting opportunities.

Port Huron State Game Area

Port Huron State Game area is a large hunting area located in central St. Clair County.

St. Clair Flats State Wildlife Area

St. Clair Flats is a very large wildlife area located on the islands of Clay Township and including wildlife refuges and a large area open to in-season hunting. The area has unique terrain and habitats.

Wetzel State Recreation Area

Located in Lenox Township, Wetzel State Recreation Area is an undeveloped park providing areas for hiking, hunting, snowmobiling and cross-country skiing.

Huron-Clinton Metropolitan Authority

The Huron-Clinton Metropolitan Authority operates 13 parks across Southeast Michigan, including three in Macomb County, all of which are a short drive from Clay Township.

Stony Creek Metropark, Shelby Township

Established around Stony Creek Lake, this park includes a nature center, hiking and mountain biking trails, campgrounds, boat rental and launch, bike rental, golf course, and disc golf course.

Lake St. Clair Metropark, Harrison Township

Located on the Lake St. Clair shore, this park offers a splash pad, swimming pool, and beach, tennis, par-3 golf, a sledding hill, nature center, trails, windsurfing launch, and boat launch, among other amenities.

Wolcott Mill Metropark, Ray Township

Wolcott Mill Metropark is a largely natural park featuring trails, a farm center, campgrounds, a golf course, and a model airplane field.

Other Facilities

Specialty facilities in the region include the Washington Life Center in Marine City, which offers programming for seniors, sledding hills in New Baltimore, East China Township and Marine City, and ice arenas in Chesterfield Township, Mount Clemens, and Marysville. Clay Township’s park annually floods its basketball court to create an ice rink.

Regional Facilities

St. Clair County Parks

Columbus County Park

Located in Columbus Township, this park on the Belle River includes a modern lodge, sledding hill, and large, natural outdoor area, including hiking, equestrian, and mountain biking trails.

Goodells County Park

This park occupies 327 acres and contains the County Farm Museum and 4-H Fair Grounds. Other amenities include the Butterfly Garden, meadows, picnic areas, a BMX track, sledding hills, playgrounds and a splash pad for children.

Fort Gratiot County Park

This 30-acre park is located in north St. Clair County, and offers scenic views of Lake Huron. This park includes a public beach, picnicking facilities, playgrounds, and walking trails, as well as the 1971 Tunnel Explosion Memorial, which honors 22 workers killed in an accident while constructing a water intake tunnel in the area.

Fort Gratiot Light Station

This five-acre former Coast Guard station was transferred to St. Clair County in 2010, making it the county's newest park. The site is home to Michigan's oldest lighthouse. Restoration and improvements to the site were completed with various grants and fundraising.

Woodsong County Park

This park was purchased from the Michigan Waterways Council of the Girl Scouts of America. This site contains rustic trails and runs along a half mile of the Black River. Activities includes nature study, hiking, biking, and paddling.

Blue Water Trails

In 2009, St. Clair County began implementing its Blueways Trail system along the county's many waterways. Its website lists 16 different paddling routes, totaling 138 miles, in nine unique bodies of water. The Island Loop Route, which runs up the Black River and along the Lake Huron shoreline, has been selected as a National Water Trail by the US Department of the Interior, the first such trail in Michigan, and one of only 14 in the nation. There are four ADA-accessible kayak launches in St. Clair County: River Front Park off North River Road in Fort Gratiot Township, the City of St. Clair Marina, the Marysville Boat Launch north of the water treatment plant, and the newest one (2012), Baker's Field Park in Port Huron Township.

Bridge-To-Bay Trail

The Bridge-To-Bay Trail is a biking and walking path that roughly follows the coast of St. Clair County, running from Burtchville Township to New Baltimore. Much of the trail is comprised of off-street shared-use pathways; the segment running through Clay Township is on the shoulder of Dixie Highway and not separated from the street.

Wadhams to Avoca Trail

The Wadhams to Avoca Trail is a rails-to-trails pathway more than 12 miles in length, comprised of the former CSX rail line. The trail is open to hikers, bikers, and equestrians, and its scenic rural character also supports birding. The trail also contains the 60-foot Mill Creek Trestle, which provides four overlook areas into the Mill Creek Valley.

Local Facilities in Neighboring Communities

Lions Club

Located on Harsens Island the 14 acre park contains an open space area.

Harsens Island Association

Also known as Browne’s Field, this privately maintained facility is open to island residents for public recreation use.

Ira Township

The Township provides two parks to the community. It’s larger park contains playgrounds, sports fields and courts, disc golf, and a war memorial. The small park sits on the waterfront and offers quiet enjoyment to visitors.

Cottrellville Township

A community park was established on the waterfront in 2010. There is also a park at the Township Hall, a private riding stable, as well as the Bridge-to-Bay Trail.

China Township

Three parks are located in China Township. Recreation amenities at these parks include playscapes, picnicking amenities, shelters, and sports fields and courts. Boy Scouts use the wooded areas of the Recor Road Site for camping, and the King Road/Belle River site contains a wooded trail and an access point for canoeing/kayaking in the Belle River.

New Baltimore

The City of New Baltimore is host to eleven parks and recreational facilities, which include eight public parks, one public/private venture, and two private facilities. Public parks in New Baltimore include amenities similar to Clay, as well as soccer fields, ice rinks, sledding hills, and exercise paths.

Casco Township

Casco has recently developed a Township Park and contains sports fields, picnic facilities, and equestrian trails. Senior activities are also conducted at the Casco Township Hall.

Chesterfield Township

Eight parks are located in Chesterfield Township and contain numerous sport fields and courts, boat launches and paddling opportunities, hiking and bike paths, shelters, wildlife watching, and indoor facilities.

Lenox Township

A Township Park is available to the residents of Lenox and New Haven. It contains sports fields, courts, and rinks, picnic amenities, and playscapes.

Algonac

The City of Algonac’s waterfront park features a long riverfront boardwalk with access to the local historical museum, a ferry landing, and boat launch.

Other Nearby Facilities

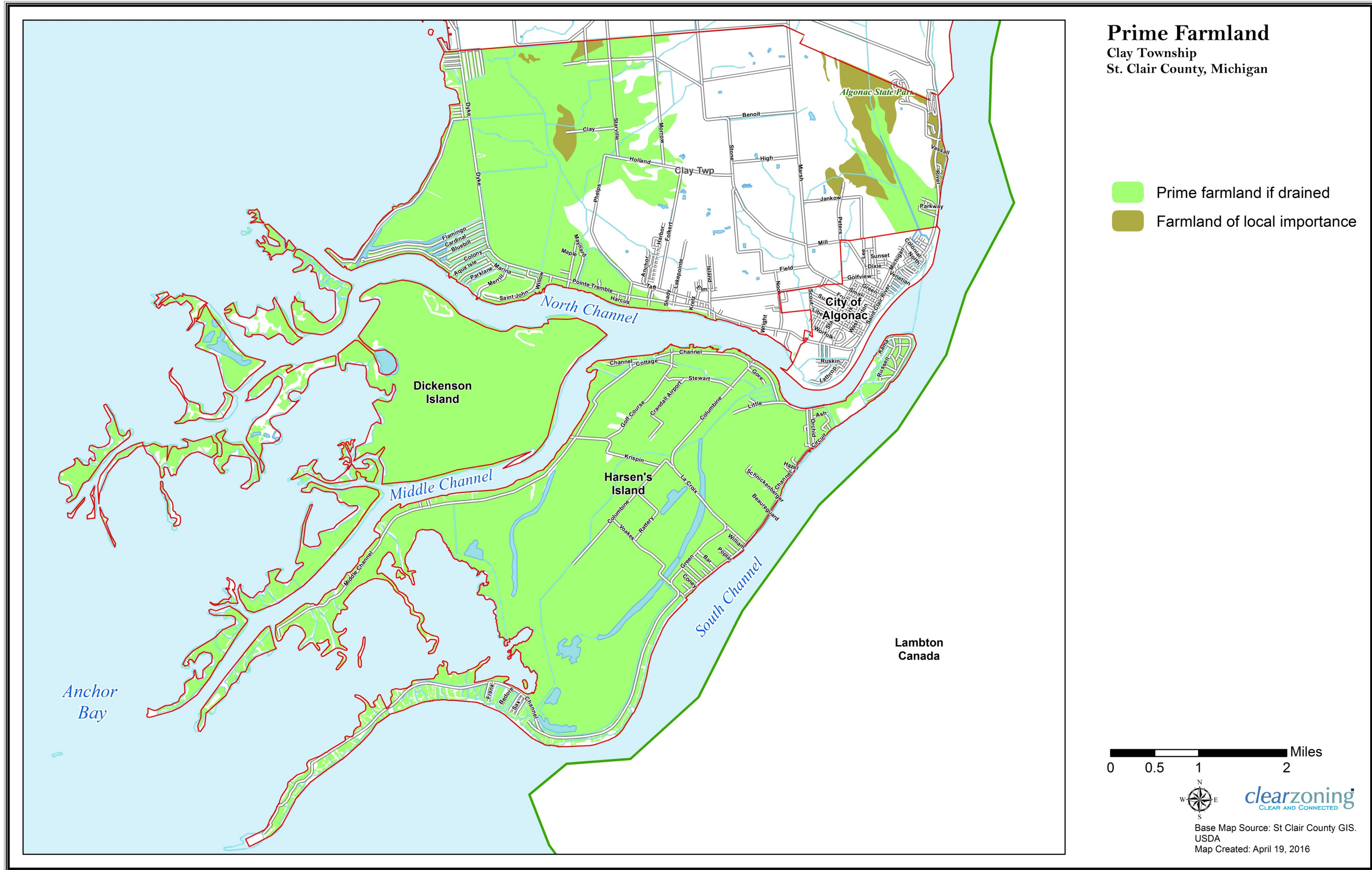
The nearest ice arena is on 25 Mile Rd in Macomb Township, roughly ten miles from the Township.

4

Resource Inventory

In a community such as Clay Township, where recreation is heavily intertwined with the natural environment, an inventory of natural resources is a helpful tool for understanding where potential opportunities may be available. These maps can also inform the planning process of open space preservation not related to recreation.

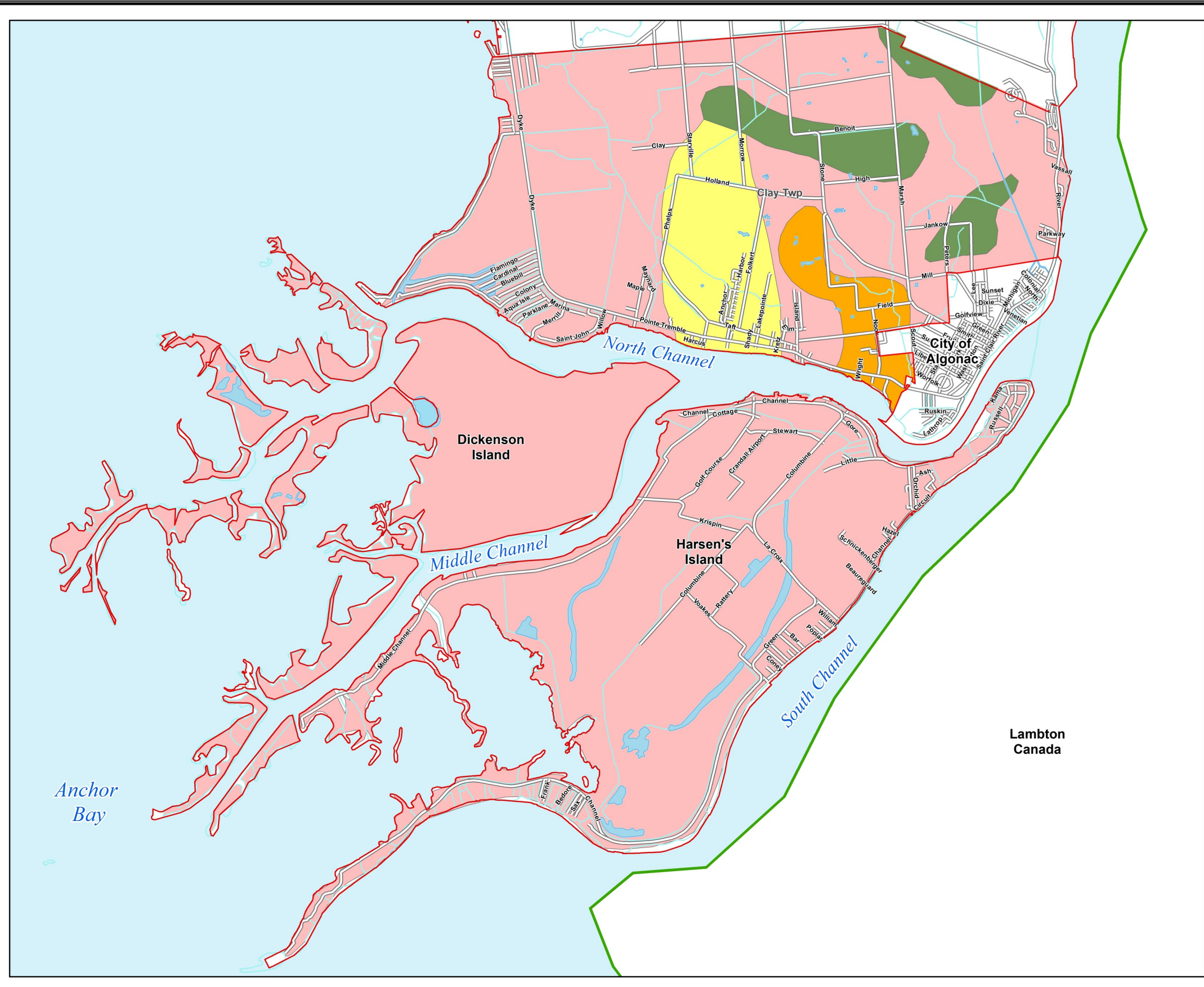
The following pages map prime farmland, quaternary geology, soils, topography, watershed and waterways, wetlands, and woodlands.



Intentionally left blank

Quaternary Geology
 Clay Township
 St. Clair County, Michigan

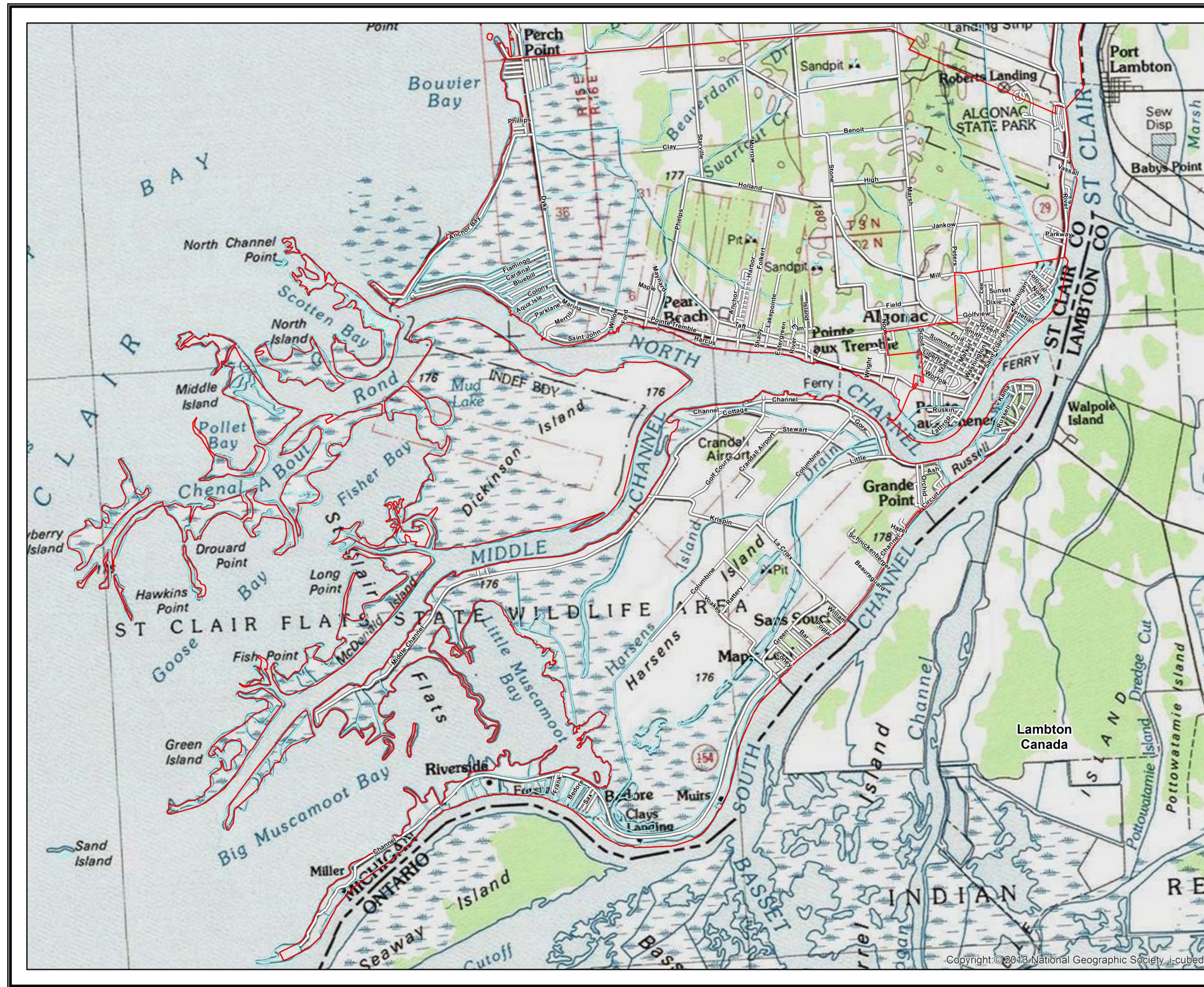
- Dune sand
- Lacustrine clay and silt
- Lacustrine sand and gravel
- Medium-textured glacial till



clearzoning
 CLEAR AND CONNECTED

Base Map Source: St Clair County GIS,
 USDA
 Map Created: April 19, 2016

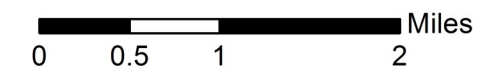
Intentionally left blank



Topography

Clay Township
St. Clair County, Michigan

 Municipal Boundary

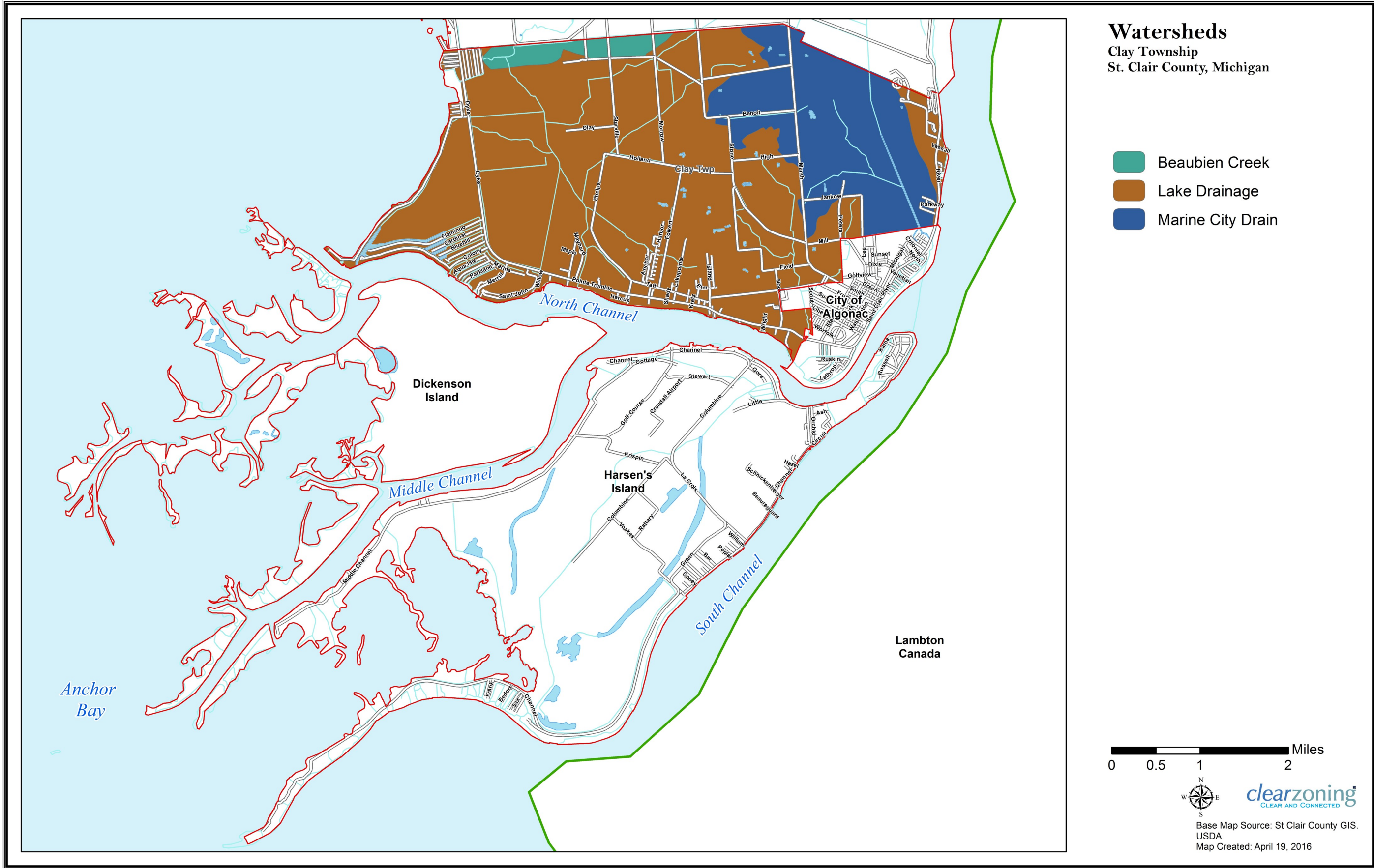


clearzoning
CLEAR AND CONNECTED

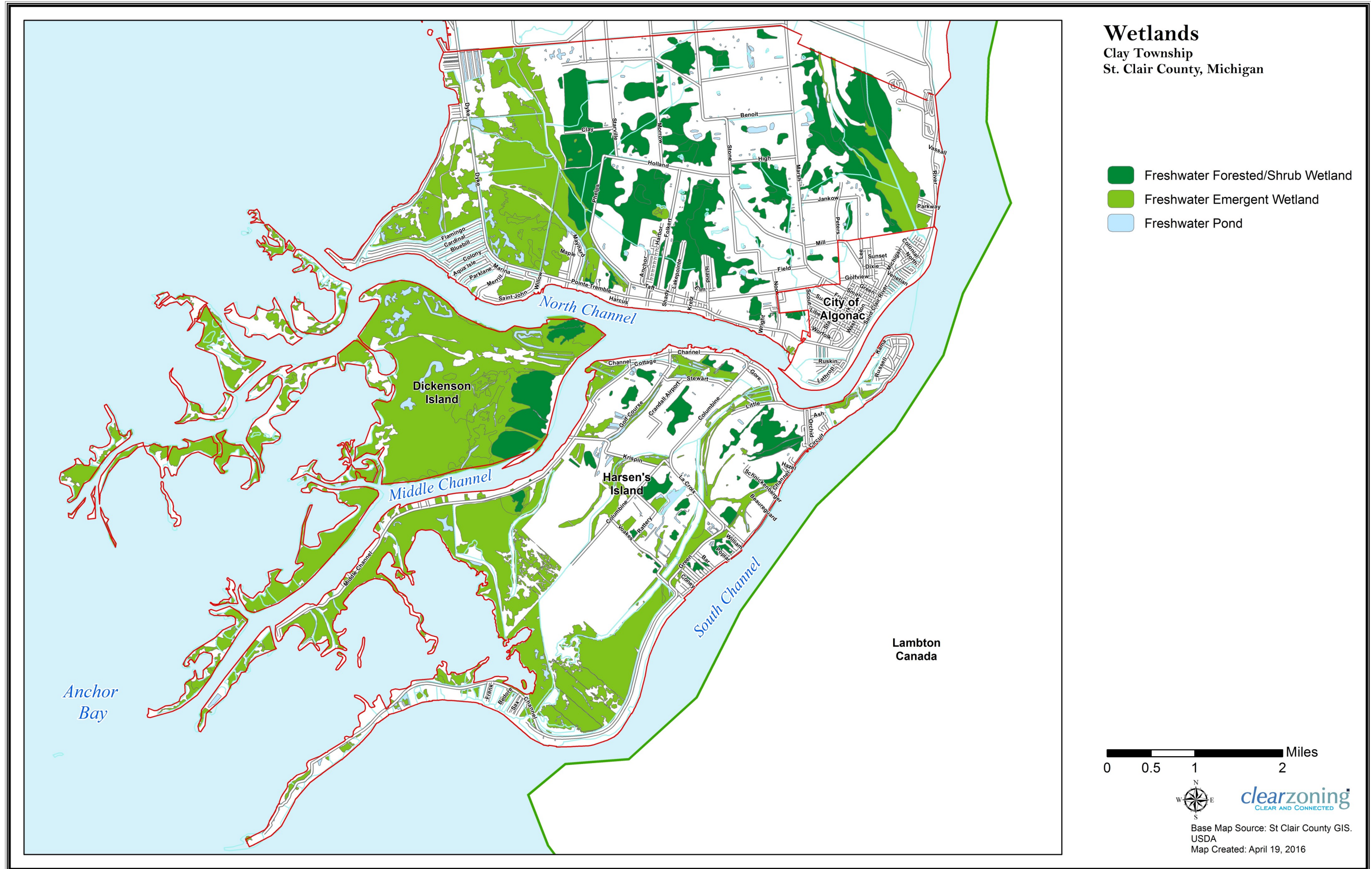
Base Map Source: St Clair County GIS.
USDA
Map Created: April 19, 2016

Copyright © 2013 National Geographic Society, i-cubed

Intentionally left blank



Intentionally left blank



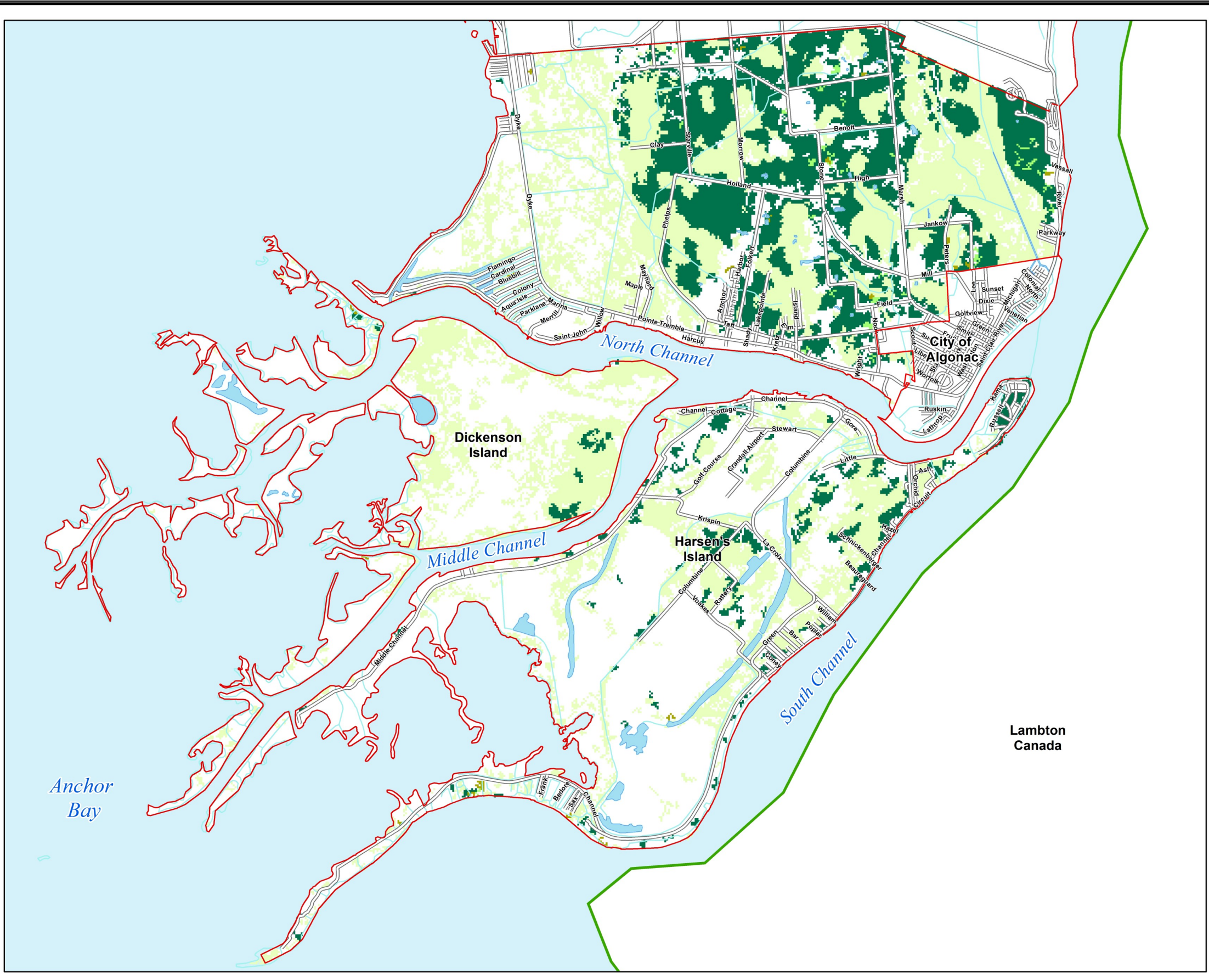
Intentionally left blank

Woodlands
 Clay Township
 St. Clair County, Michigan

- Woody Wetlands
- Mixed Forest
- Evergreen Forest
- Deciduous Forest



Base Map Source: St Clair County GIS.
 USDA
 Map Created: April 19, 2016



Intentionally left blank

5

Recreation Needs Analysis

To analyze the recreational needs of Township residents and determine deficiencies within recreation programs, it is helpful to consider standards for recreation service areas, land needs based on future population, and the ultimate size and extent of recreation facilities and their location.

These recreation planning standards are a useful tool in making an assessment of future recreation needs. Standards may be used effectively only as a means for comparing present conditions to what is thought to be suitable or desirable, and as a general guide toward estimating future needs and demands.

The following organizations have developed guidelines for recreation, which are referenced in this analysis of Clay Township's recreation facilities:

1. Heritage Conservation & Recreation Service (HCRS)

The HCRS recommends standards based on compiled data on standards used or recommended by various city, county, metropolitan, state, and federal park and recreation agencies.

2. Urban Land Institute (ULI)

The ULI, a private research organization concerned with planning and development of land, recommends standards for recreation areas for community and neighborhood development.

3. National Recreation and Park Association (NRPA)

The NRPA developed the following recommended standards and guidelines for recreation, parks and open space.

Recommended Community Recreation Facilities:

The major types of community recreation facilities recommended by the above organizations include:

1. Playgrounds/Mini-Parks

Specialized facilities that serve a concentrated or limited population, or specific groups such as small children or senior citizens. For example, suggested recreational amenities for an individual mini-park are a tot lot, 2 picnic tables and ½ acre open space.

2. Playfield or Athletic Fields/Neighborhood Park

Neighborhood parks should offer a variety of activities to accommodate a range of ages, physical abilities, and recreational interests. Therefore, it is recommended that neighborhood parks should be comprised of approximately 50% active uses (fields, courts, playgrounds, skating, etc.) and 50% passive uses (trails, picnic areas, etc.). It is recommended that a minimum of 7-10 parking spaces should be provided.

3. Community Parks

Community-wide parks include larger parks with diverse environmental quality. A variety of passive and active uses are provided, including athletic fields, sledding hills, trails, picnic areas, and playgrounds. Typically, uses are separated by activity and age group to limit potential conflicts between different types of users. Other potential activities include outdoor swimming, lighted spectator-type athletic fields, ice skating, and ample off-street parking.

4. Connector Trails

Connector trails would include a multi-use trail to give non-motorized access to parks and other uses throughout Clay Township, and would also provide connections to the Bridge-to-Bay Trail. Modes of travel include walking, biking, and in-line skating. These trails could be located in an independent right-of-way, such as along the utility corridors, or within the road rights-of-way. There are no current standards for trails within/around a community.

Park types and sizes

Clay Township's modest population and development pattern, with low-density development inland and shoreline-oriented dense development between lake St. Clair and M-29, make particular demands on the Township's recreation offerings. Most residents have direct access to their preferred casual outdoor recreation activities, either through private watercraft or on their own land. The Township's role is to provide facilities that residents do not customarily have access to, and this has been the focus of the development of the municipal park. Playground equipment, sports courts, and gathering places, such as the pavilion, afford Township residents recreational opportunities they would not easily be able to access without public facilities.

The Township currently does not have its own system of **connector trails, paths and greenways**. It does, however, have a network of largely rural roads capable of accommodating bicycle users, and the Bridge-To-Bay Trail runs on the shoulder of M-29, the beginnings of a sidewalk network in the Downtown Development District, and an opportunity to add the Krispin Drain to the Blueways of St. Clair.

Assessment of Township Facilities

In determining the recreational needs for the Township as a whole, it is important to consider the location of parks and facilities. Clay Township Municipal Park is centrally located within the Township. The Township’s development pattern limits the need for playgrounds and mini-parks.

The Michigan Department of Natural Resources (DNR) has developed a set of standards based on NRPA guidelines entitled “Michigan Recreation Opportunity Standards,” which will be utilized in this recreation needs and deficiency analysis. These standards state the amount of locally developed recreation acreage and the amounts of various specific recreation facilities and equipment that a community should have per every 1,000 persons in the community’s population. Table 5-1 presents these standards.

Analysis of Needs and Deficiencies

While the Recreation Opportunity Standards reference a very broad set of facilities, it is important to note that many of the standards reference populations that are considerably larger than Clay Township’s, or in several cases, populations larger than the Township and its neighbors combined.

Nearly all of the facilities in the list are accessible to Township residents either within the Township boundaries or in a directly neighboring community. The Township meets most of the standard with the inclusion of St John’s Marsh Wildlife Area and Algonac State Park, as well as Browne’s Field and the Lions Club facility. The Township also offers ample fishing access at the Peal Beach Pier, as well as the Krispin Drain.

Clay Township, especially as a water front community, may want to consider increased opportunities for public boat launches (currently only two public launches available). It is likely the Township will meet this goal, as a partnership with the DNR has proposed at least three more launches for non-motorized boats. The Township also lacks ORV access and snowmobiling opportunities, which is not uncommon and likely not appropriate for Southeast Michigan.

Table 5-1: Michigan Recreation Opportunity Standards

Type of Recreation Opportunity	Plan Standard
Developed Local Park Land	10 acres / 1,000 population
Ballfields (not including school facilities)	1 / 3,000 population
Outdoor Basketball Courts (not including school facilities)	1 / 5,000 population
Picnic Areas (tables)	1 / 200 population
Playgrounds (not including school facilities)	1 / 3,000 population
Outdoor Tennis Courts (not including school facilities)	1 / 4,000 population
Public Boat Launches (parking)	1 / 400 population
Campground Sites (including commercial)	1 / 150 population
Cross-Country Ski Trails (miles)	1 / 10,000 population
Fishing Access (feet)	1,000 / 1,000 population
Hiking Trails (miles)	1 / 5,000 population
ORV Areas	1 acre / 7,500 population
ORV Trails (miles)	1 / 10,000 population
Snowmobiling Land	10 acres / 1,000 population
Snowmobiling Trails (miles)	1 / 3,000 population

Intentionally Blank

6

Planning Process

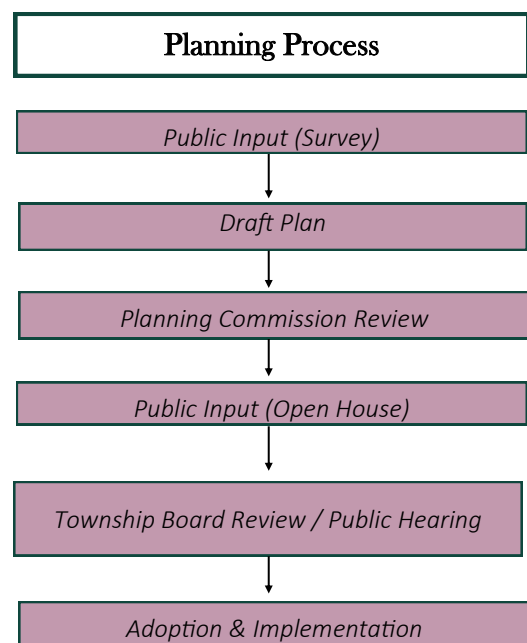
The recreation planning process in Clay Township is intended to involve individuals who represent a broad cross-section of the community’s population. The Township Board is responsible for implementing the Recreation Plan, but the Planning Commission provides input, analysis and recommendations.

The planning process began with an inventory of all Clay Township parks facilities. An initial survey was administered to participants in the Township’s Trick And Treat Halloween event. A second, more generalized survey was developed and posted online. Invitations were sent to set of active parks stakeholders for a focus group. Some focus group invitees provided feedback on proposed discussion topics. Finally, a survey was conducted at the annual Easter Egg Hunt event.

Using the inventory and survey findings, this Recreation Plan identifies strengths and opportunities of the current parks facilities, along with goals for the future.

The draft plan and 5-year action program of priority projects were reviewed by the Planning Commission.

Following the recommendation of approval by the Planning Commission, the plan was presented to the Township Board. The draft plan was made available for public review and comment for at least 30 days prior to formal adoption by the Township Board. Notice of the public review period was provided in the local newspaper. The plan was presented at a public hearing held by Township Board. Copies of the notices announcing the review period and public hearing are included in the Appendix.



Public Input

Understanding the important role of public involvement during preparation of this plan, the Planning Commission developed an online survey to gather general input from residents regarding how they participate in recreational activities and facilities within the Township, as well as recommendations for improving features and amenities offered. The survey was available for seven (7) weeks beginning July 12, 2016. It was advertised on the Township website, Facebook page, and in the Voice newspaper. Over 160 individuals responded to the survey and provided input. See the Appendix for the complete survey results.

Respondents of all ages completed the survey, with 50 to 64 years old being the largest cohort (42%). Most respondents participated in recreation activities within the Township (70%). Almost half of the participants utilized the Township's parks (45%), while 58% participate in activities outside of the Township's parks. Those who did not participate in recreational activities within the Township most often cited that they were unaware of any facility or program offerings.

Activities

Boating/kayaking/paddling was the most popular recreational activity in the Township (72%), followed by walking (68%), fishing (61%), biking (61%), and swimming/wading (53%). The Township Hall Park and Browne's Field were the most popular facilities for recreation (both at 60%). Of the special events held in Clay Township, the Farmer's Market was the most popular (62%), followed by Music in the Park (49%), Winterfest (29.13%), and Outdoor Movie Night (19%).

Respondents who participate in recreational activities in the Township most often did so with other adults (80%) or with children (45%). The majority found it easy and convenient to pursue their recreational interests in Clay Township. When asked if respondents would like to see another park in the Township, the majority said they would like to see a waterfront park in the Township (61%), followed by a park on Harsens Island (53%).

Comments and Suggestions

When asked what, if any, improvements residents would like to see, bike paths, more activities/facilities on Harsens Island, a waterfront park and public beach area were most frequently suggested.

Below are some additional comments received from survey participants that are representative of major themes.

"The Township Park is a fabulous addition to Clay Twp! Let's keep trying for the beach park!"

"We are a waterfront community. Promote our greatest asset!"

"Glad to see the increase in public recreation opportunities since I was a kid. Need better bike infrastructure."

"Continue to find ways to enhance healthy ways for all ages to participate in a variety of recreational activities."

7

Goals & Objectives

Goals and Objectives formulated by Clay Township are the basis of the recreation planning process. They form the framework for public and private decision-making regarding recreational facilities and programs in the Township. This Recreation Plan seeks to pursue long-range recreational goals and objectives through specific short-range actions on the part of the Township, County, and State as well as private entities.

Mission Statement

The Clay Township Planning Commission is dedicated to providing a full range of recreational facilities and aesthetically pleasing parks which will increase the overall quality of life for the residents of Clay Township.

Vision Statement

The Clay Township will grow and diversify as the population does. Parks and open space areas will be provided throughout the Township so that all residents have equal recreational opportunities.

Goals & Objectives

1. Enhance the quality of life for Township residents by providing recreational facilities and services that foster social, intellectual, physical, and emotional development of youth and adults.

- Provide recreation opportunities that meet the needs of the community population and trends, including senior interests
- Develop health and wellness programs which educate residents of all ages on healthy eating, exercise habits, stress management, etc.
 - Strengthen the pathway connectivity of the Township.
 - Provide greater connections between residents as well as visitors and the abundant water resources within the Township, including the river, the channels and the marshes and wetlands.

2. Work with schools, community organizations, and other partners to provide and promote recreational opportunities for residents.

- Work with other organizations within and around Clay Township to promote car shows, boat shows, festivals and the like.
- Promote through newspapers articles, websites, TV advertisements, as well as other promotional materials the abundance of environmental and water related activities which are available in the Township.
- Continue to develop and expand outdoor classroom areas in conjunction with the School District and State facilities, and potentially on the Hunt Club property, if an agreement can be achieved with the new ownership/developer that would permit a new programming partnership.
- Consider the potential of merging resources and programming with other recreation providers within the County.
- Continue to collaborate with the County to implement and maintain the Clay Township portions of the Bridge to Bay Trail.

Goals & Objectives

3. Preserve Clay Township's existing unique natural features for open space recreational purposes.

- Recognize and promote the unique environmental opportunities available for Township residents as well as visitors, such as extensive wildlife viewing, hunting, fishing, kayaking, hiking, boating, snowmobiling, etc. in addition to traditional recreation facilities.
- Provide expanded opportunities for outdoor environmental education such as wildlife viewing, fishing, vegetation and environmental systems viewing and education.
- Work with the State to provide additional access to the St. Clair Flats as well as the St. Johns Marsh.

4. Acquire additional land for recreational use as it becomes available.

- Monitor sites which become available for potential expansion of baseball, softball, and soccer fields or other recreational opportunities.
- Work with other recreational entities such as the County or State to achieve grant help for land acquisition.
- Target areas/properties along the River for acquisition and access purposes which are currently vacant or are currently underdeveloped to protect shoreline environments as well as provide water access.
- Secure lands through either acquisition or easement which will limit developments in around those sensitive habitats throughout the Township, including the St. John's Marsh, the St. Clair Flats and the actual waterways

8

Action Strategies

Action Strategies outline Clay Township’s approach to implementing the goals and objectives identified in the previous chapter. These strategies are intended to provide guidance for planning and budgeting purposes for the next five years. They suggest priorities generally, but are not intended to be set in stone or limit additional creative approaches. Generally, parks and recreation action strategies should consider the following when outlining a strategy to implement goals and objectives:

1. Are there immediate health and safety concerns that need to be addressed?
2. What are opportunities that exist to partner with other groups towards a common goal?
3. Is there a person or group who can champion specific goals/objectives?
4. Are there multiple goals that can be achieved by implementing a project?
5. What projects affect the greatest number of people in the community and/or address the greatest need?
6. How can projects be broken down into phases for a multi-year approach?
7. What funding opportunities exist for implementation of certain goals?

Planning Actions reflect strategies aimed at identifying an approach to achieving certain goals and objectives. These are activities that can be undertaken at a variety of levels, including the Planning Commission and the Township Board.

Maintenance Actions address those issues identified in the plan as needing upgrades or attention to repair, safety or appearance. These activities will likely be addressed by the public works department, but may also include assistance by various community groups.

Administrative Actions will pursue strategies that keep an inventory of recreation facilities, programs and events for the Township. Strategies developed through planning actions will be implemented and/or coordinated through administrative efforts.

Funding Actions will actively pursue local, cooperative and grant funding approaches to implementing the goals and objectives of the plan.

Clay Township Parks & Recreation 5-Year Action Plan

Park	Action	Action Type	Year	Projected Cost(s)
Township Hall Park	Reutilize concession stand with equipment rentals on select days of the week.	Administrative	1 year	—
	Install fitness stations along walking path.	Planning	2 years	\$35,000
	Install gazebo.	Planning	5 years	\$40,000
	Install warming station for winter months.	Planning	3 years	\$15,000
Pearl Beach Pier	Complete Phase 2 of the Pearl Beach Pier Development Plan.	Planning	2 years	—
	Provide interpretive signage, informing visitors of native species in the area, especially sturgeon.	Planning	1 year	—
	Evaluate and, if feasible, develop a strategy for repurposing property in front of Pier along Pte. Tremble Road	Planning	2 years	—

Costs for many of the aforementioned items are dependent on quality of construction, brand of manufacturer, and scale of design.

This plan does not target any specific property for acquisition, but the Planning Commission reserves the right to recommend to the Township Board the acquisition of appropriate property for future park development as opportunities arise.

Clay Township Parks & Recreation 5-Year Action Plan

Park	Action	Action Type	Year	Projected Cost(s)
Recreation Partnerships	Continue and strengthen partnerships with surrounding communities, sharing both facilities and recreation programming.	Administrative	Ongoing	—
	Continue communications with established and potential recreation partners in promoting and developing the Township as a recreation destination for a variety of activities for all age groups and abilities.	Administrative	Ongoing	—
	Work with Blueway trails in the developing and installation of trail markers along the Krispin Drain.	Administrative	2 years	—
	Expand partnership with the DNR at Algonac State Park to support community events.	Administrative	Ongoing	—
	Support the DNR in Algonac State Park’s proposal to expand the boardwalk.	Administrative Funding	5 years	—
	Work with the DNR in the installation of kayak launches at the Algonac Ramp, across from Browne’s Field, and the Middle Channel.	Administrative Funding Planning	5 years	\$33,000 per launch
	Evaluate the feasibility of a bike trail and walking trail along M-154 on Harsens Island.	Administrative Planning	Ongoing	—
	Support the DNR in the restoration of St. John’s Marsh.	Administrative	2 years	—
Recreation Programming	Continue and expand recreational program offerings of the township.	Administrative	Ongoing	—
	Work with surrounding communities and recreation partners in building and sharing recreational offerings on a community-wide scale.	Administrative	Ongoing	—

9

Appendix

Resolutions of Adoption	
Public Notices	
Meeting Minutes	
Survey Results	
Transmittal Letters	
DNR Grant Inventory	
Post-Completion Certification Reports	

Resolution of Adoption

Public Notice

Meeting Minutes (Meeting of Adoption)



CLAY TOWNSHIP

Recreation Plan Update Focus Group Meeting

Dear Clay Township Parks & Recreation Focus Group Participant,

Thank you for agreeing to participate in the stakeholder focus group being held by Clay Township's Planning Commission. Your participation will help to inform the update of the Recreation Plan for 2016-2021. Following is the meeting time, location and program information.

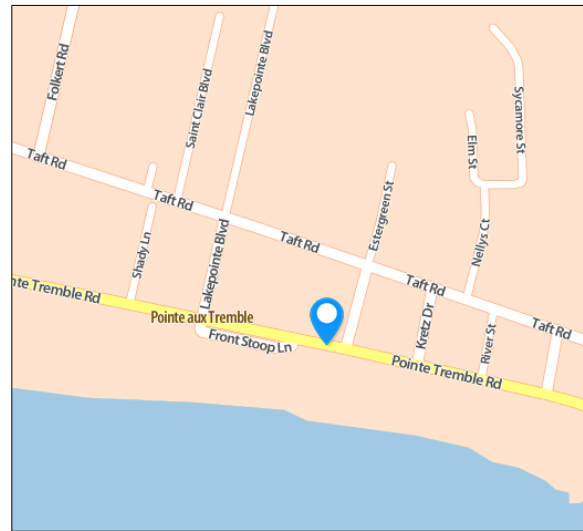
Topic: Recreation Plan Update

Date: July 27, 2016

Time: 7:30 PM

Location: Clay Township Meeting Hall
4710 Pte. Tremble Road

Questions: Karen Zarowny, Giffels Webster
313.285.5249 or
kzarowny@giffelswebster.com



10 minutes Recreation Plan Overview

60 minutes Focus Group Activity

Questions for the Focus Group Activity:

- What three things do you value most about parks & recreation in Clay Township?
- Describe your vision of parks & recreation in Clay Township in the next 5 years
- What should be accomplished over the next 5 years?
- How do Clay Township's parks & recreation facilities and programs benefit your organization and what contribution does your organization make in return?

15 minutes Review of Focus Group Activity & Final Comments

Clay Township Recreation Plan Stakeholder Focus Group - July 27, 2016

Attendees: Cindy Babisz (Township Recreation Coordinator), Ilene Bischer, Mark Brochu (St. Clair County Parks and Recreation), Artie Bryson (Township Supervisor), Susan Bryson (Cattails), William Foster (County Parks/Recreation), Kris Dombrowski (The Kayak Store), Lori Eschenburg (Blueways of St. Clair County) , Chuck Miller (Historical Society), Doreen Miller (Reader's Cove), Jim Neumann (Riverside Grocery- Kayak/Paddleboard classes), John Stryker (School District), Cindy Valentine (Township Clerk), Dennis Wilson (Algonac State Park), Dennis York (Downriver Recreation Association)

The Stakeholder Focus Group for the Clay Township Recreation Plan was held on July 27, 2016 at the Township Hall. Stakeholders included government/quasi-government representatives, community partners, business organizations, recreation partners, and natural resource partners.

The intent of this meeting was for stakeholders to provide input that would inform the Planning Commission's development of the Recreation Plan's Action Goals and Strategies. Attendees were given a brief introduction to the Recreation Plan process. The stakeholders were then asked to respond to the following statements:

- What three things do you value most about parks & recreation in Clay Township?
- Describe your vision of parks & recreation in Clay Township in the next 5 years
- What should be accomplished over the next 5 years?
- How do Clay Township's parks & recreation facilities and programs benefit your organization and what contribution does your organization make in return?

Three things you value you the most about Recreation in Clay Township

- Biking/biking paths (x9)
- Walking paths (x4)
- Fishing (x4)
- Kayaking (x3)
- Clay Township Parks (x3)
- Boating (x2)
- Paddle boarding (x2)
- Access to natural areas (x2)
- Nature trails
- Access to waterways
- Community Activities
- Family destination
- Showcase
- Variety
- Free access to launch
- Clean Water
- Watersports in general
- Waterskiing
- Harsens Island as a unique gem for Recreation
- Outdoor appreciation
- Health and wellness
- Canoeing
- Beaches
- BBQ place
- Pickleball
- Tennis
- Golf
- Swimming
- Hiking
- Playground
- Water front activities
- High school sports
- Activities for our youth
- Vision of community investments
- Open facilities
- Walking path

Three things you value you the most about Recreation in Clay Township (continued)

- Water recreation
- Wildlife Division and public access to enjoy
- Hunting access

5-Year Vision for Clay Township Recreation

- Ongoing stakeholder input
- Tennis/pickleball courts and training programs
- Beginner-friendly, safe kayaking
- Appropriate boat launch with parking
- Take leadership role in changing the character of the “floating bar”
 - Be more child-friendly
- More access points to the water
- Programs for all ages
- More developed trailheads
- Develop unique branding program for the Township
- Focus on what we do best: water safety and other safety programs for kids in the summer
- Safe bike path on the island
- Barrier-free access at trailheads
- Board of Trustees believes better access to natural sources is good for business
- Emphasize interconnectivity of inside waterways
- Access for parking along Crispin drain for canoe/kayak
- Maintain waterways following improvement projects
- Education programs-family oriented
- Continue partnerships with school district
- Bring users to school tennis courts
- Harsens Island would like local pickleball courts
- USTA may have grants for court sports
- Make sure people know where boating access points are located
 - Boat access limits fishing access
- Promote natural beauty of our wetlands, waterways, marsh
- A Township beach
- State Park has an undesignated area of water (small, 100 feet)

Most important accomplishment in the next 5 years

- Greater access to natural resources
- A Township beach
- Acquire unused DNR tracts on the South Channel; Crispin Drain
 - Boat launch on the South Channel
 - Barrier free kayak launch on the marsh
 - Check the tax foreclosure list annually
- Expand bike path system in cooperation with regional and state partners with access to the dike
- Expand recreation programming for all ages
- Improve communication with all partners
- Research foreclosures and grants
- Work to expand funding
- Assemble “Action Groups” to get things done – sweat equity
- Find a champion for each major action

Most important accomplishment in the next 5 years (continued)

- Contact M. Maroun about surplus property
- Plan activities to fully use and program existing facilities.

Benefits and Contributions

- School kids are always in the Township Park
 - School has millions of dollars in facilities that could be programmed
- Kayak rental shop can offer education and training experience
- Harsens Island can provide the water experience
- Trail head amenities and storm shelters
- Harsens Island is a “gold mine”, and magical place
 - However, lacks safety and amenities for recreation users
- DNR access points are beneficial – can offer making others aware of their location
- If a site can be secured, County parks can install barrier-free kayak launch
- Lions Pool [Algonac]/ Clay splash pad—is there any opportunity to share?
- Move water station on the island. Redevelop as access to North Channel
- Rotary and Lions Club hold events in the park – install equipment in return
- Help coordinate programs and activates
- Care for what you have—make it a priority to retain public support



Search_ [arrow]



Home > More News > Clay Twp Parks & Rec Plan Input

Clay Twp Parks & Rec Plan Input



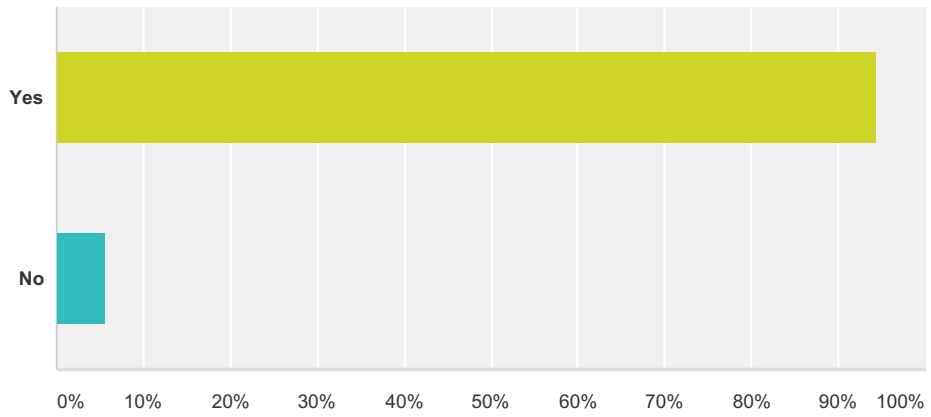
The Clay Township Planning Commission is in the process of updating the community's 5-Year Recreation Plan, which will guide future parks and recreation planning. Input from residents is an important component of the process. Please take a few minutes to share your ideas by completing a short survey through the link provided:

<https://www.surveymonkey.com/r/ClayTwp>

Thank you!

Q1 Are you a resident of Clay Township?

Answered: 161 Skipped: 5

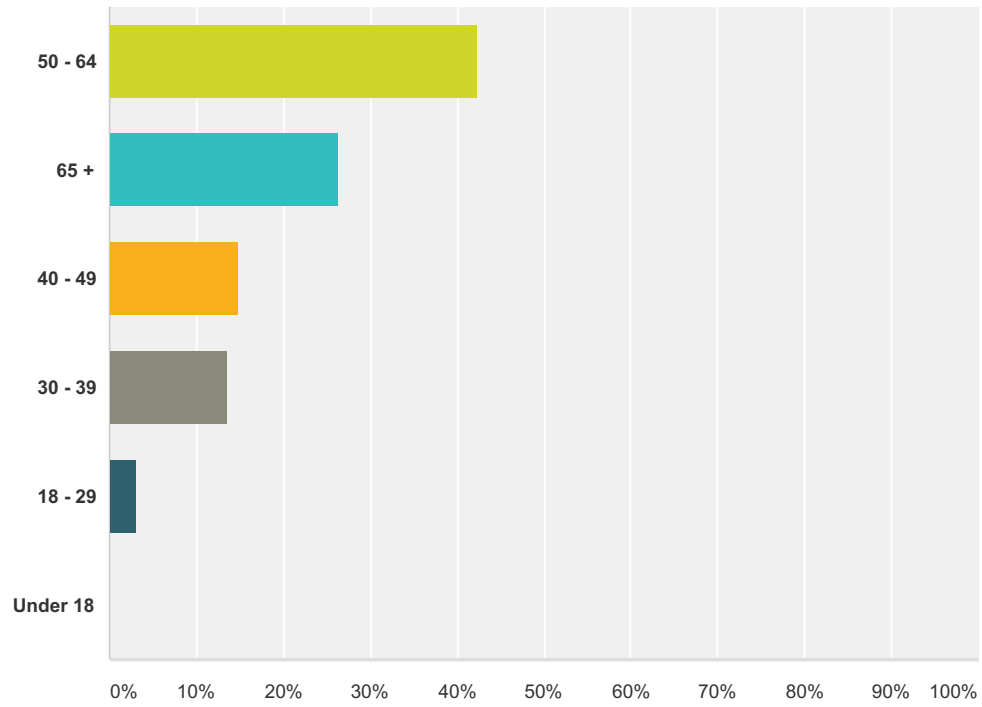


Answer Choices	Responses
Yes	94.41% 152
No	5.59% 9
Total	161

Clay Township Recreation Plan Survey

Q2 What is your age?

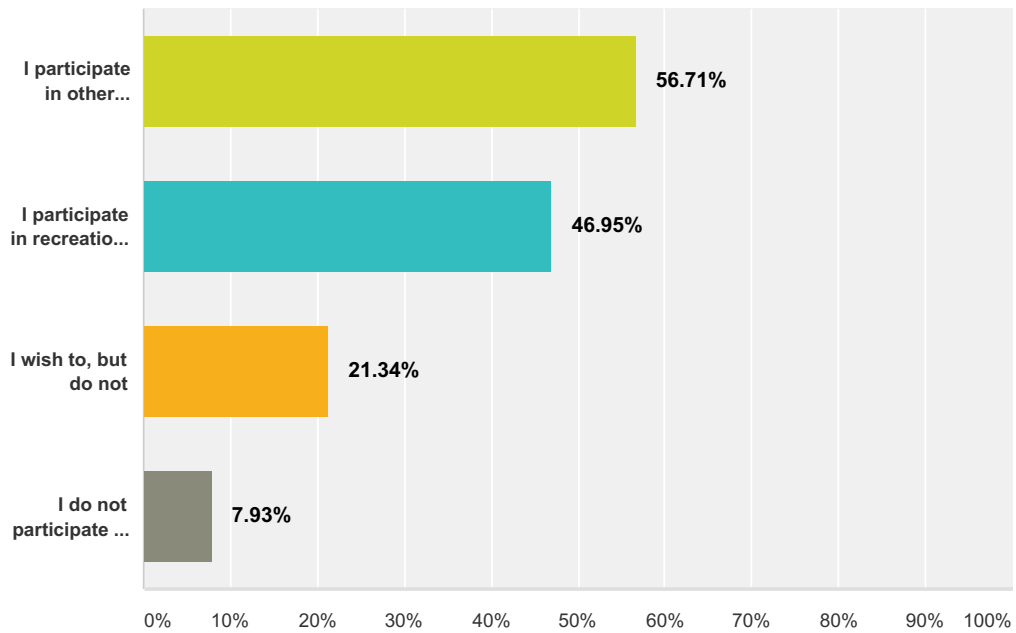
Answered: 163 Skipped: 3



Answer Choices	Responses	Count
50 - 64	42.33%	69
65 +	26.38%	43
40 - 49	14.72%	24
30 - 39	13.50%	22
18 - 29	3.07%	5
Under 18	0.00%	0
Total		163

Q3 Check any and all the statements that you find true:

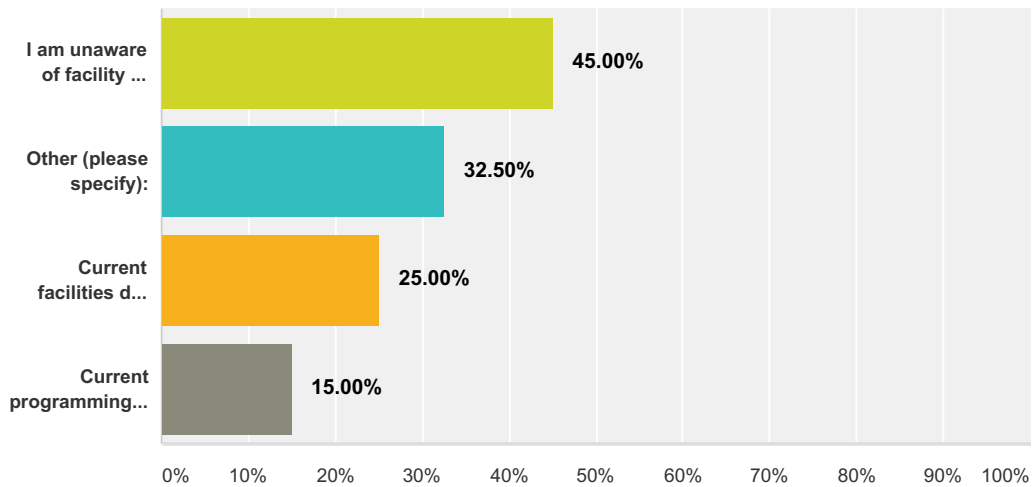
Answered: 164 Skipped: 2



Answer Choices	Responses	
I participate in other recreation activities in Clay Township, outside of the parks	56.71%	93
I participate in recreation activities at Clay Township's parks(Township Hall Park & Pearl Beach Pier)	46.95%	77
I wish to, but do not	21.34%	35
I do not participate in recreation activities in Clay Township	7.93%	13
Total Respondents: 164		

Q4 Why do you not participate in recreational activities in Clay Township?

Answered: 40 Skipped: 126

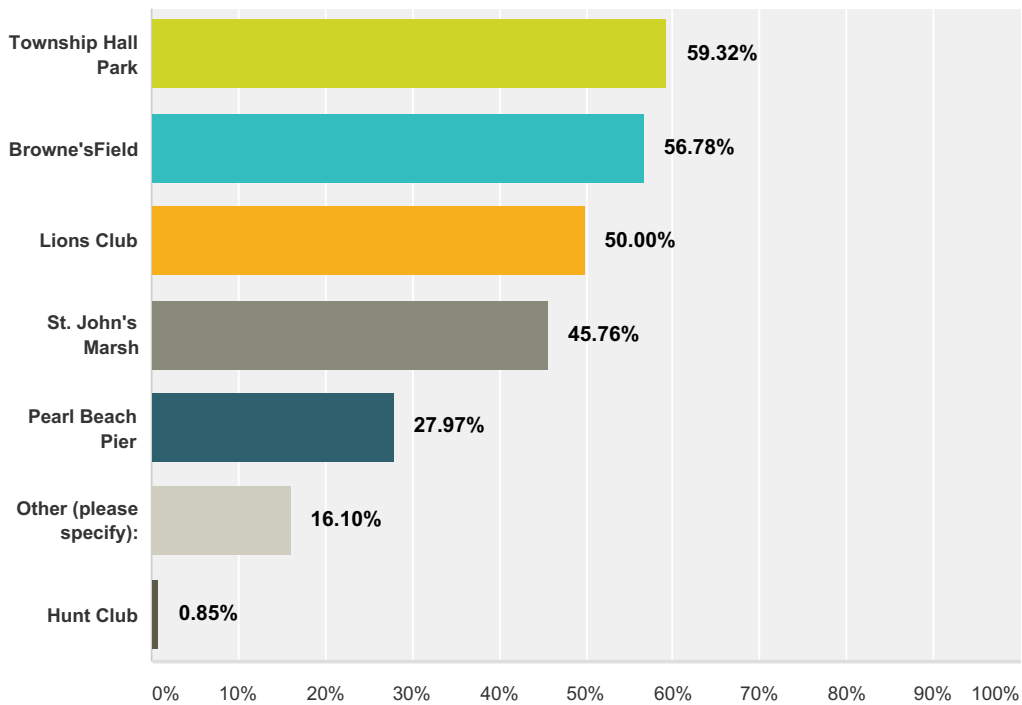


Answer Choices	Responses
I am unaware of facility or program offerings within the Township	45.00% 18
Other (please specify):	32.50% 13
Current facilities do not support my interests	25.00% 10
Current programming does not support my interests	15.00% 6
Total Respondents: 40	

#	Other (please specify):	Date
1	Too busy	8/31/2016 4:09 PM
2	Busy	8/18/2016 8:18 PM
3	Work schedule	7/14/2016 9:51 PM
4	Seem to be too busy on the island	7/13/2016 8:25 PM
5	Not available to participate due to work schedule	7/13/2016 1:30 PM
6	part time	7/12/2016 9:12 PM
7	I like exercises. Some activities could be aimed at 60plus.	7/12/2016 8:35 PM
8	None on Harsens island	7/12/2016 7:34 PM
9	Not interested	7/12/2016 5:16 PM
10	I fish.	7/12/2016 3:25 PM
11	Wish the planning commission would finish what they started. They need to finish supplying city water to the remaining three miles of the island!!!	7/12/2016 2:19 PM
12	To old	7/12/2016 2:01 PM
13	Time constraint	7/12/2016 1:47 PM

Q5 Which recreational facilities do you visit in Clay Township? Check all that apply:

Answered: 118 Skipped: 48



Answer Choices	Responses
Township Hall Park	59.32% 70
Browne's Field	56.78% 67
Lions Club	50.00% 59
St. John's Marsh	45.76% 54
Pearl Beach Pier	27.97% 33
Other (please specify):	16.10% 19
Hunt Club	0.85% 1
Total Respondents: 118	

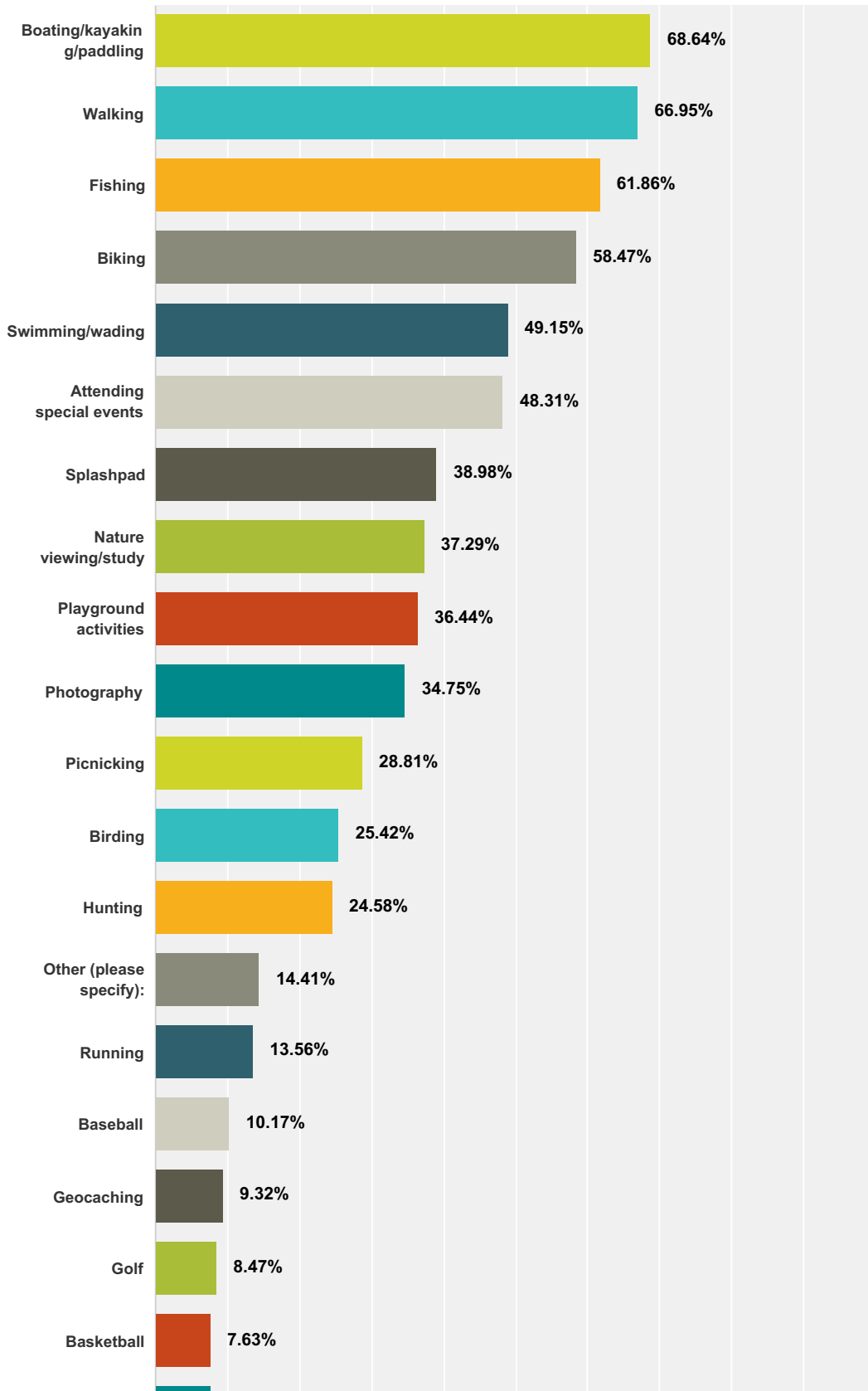
#	Other (please specify):	Date
1	Clay township park	8/31/2016 5:01 PM
2	Library	7/18/2016 6:25 PM
3	Harsens Island Managed Waterfowl Area	7/17/2016 12:30 PM
4	Splash pad	7/13/2016 10:35 PM
5	Krispin drain Kayak path	7/13/2016 8:38 AM
6	Bike riding, kayaking, running, swimming, fishing and boating.	7/13/2016 8:22 AM
7	Lions Hall on Harsens Island	7/13/2016 7:17 AM

Clay Township Recreation Plan Survey

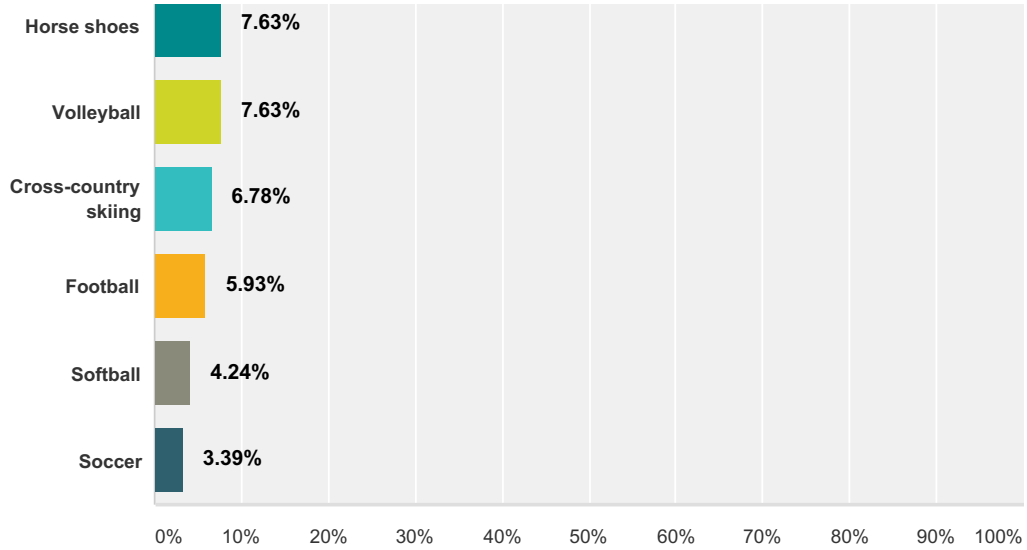
8	Anything available on Harsens Island	7/13/2016 6:45 AM
9	Browne's Field	7/12/2016 11:07 PM
10	River	7/12/2016 9:23 PM
11	Algonac state park	7/12/2016 8:21 PM
12	Both schools, DNR on Harsens Island and St Johns Marsh	7/12/2016 5:11 PM
13	krispin drain	7/12/2016 4:02 PM
14	Kayak in the south channel and the bay	7/12/2016 3:50 PM
15	Splash pad and hockey rink	7/12/2016 3:17 PM
16	St. Clair River	7/12/2016 2:10 PM
17	Pearl beach Lions club	7/12/2016 2:09 PM
18	Local Waterways, State Park, Bike Trails	6/27/2016 4:35 PM
19	clay-algonac historical society	5/4/2016 4:10 PM

Q6 What recreation activities do you participate in Clay Township?

Answered: 118 Skipped: 48



Clay Township Recreation Plan Survey



Answer Choices	Responses	
Boating/kayaking/paddling	68.64%	81
Walking	66.95%	79
Fishing	61.86%	73
Biking	58.47%	69
Swimming/wading	49.15%	58
Attending special events	48.31%	57
Splashpad	38.98%	46
Nature viewing/study	37.29%	44
Playground activities	36.44%	43
Photography	34.75%	41
Picnicking	28.81%	34
Birding	25.42%	30
Hunting	24.58%	29
Other (please specify):	14.41%	17
Running	13.56%	16
Baseball	10.17%	12
Geocaching	9.32%	11
Golf	8.47%	10
Basketball	7.63%	9
Horse shoes	7.63%	9
Volleyball	7.63%	9
Cross-country skiing	6.78%	8

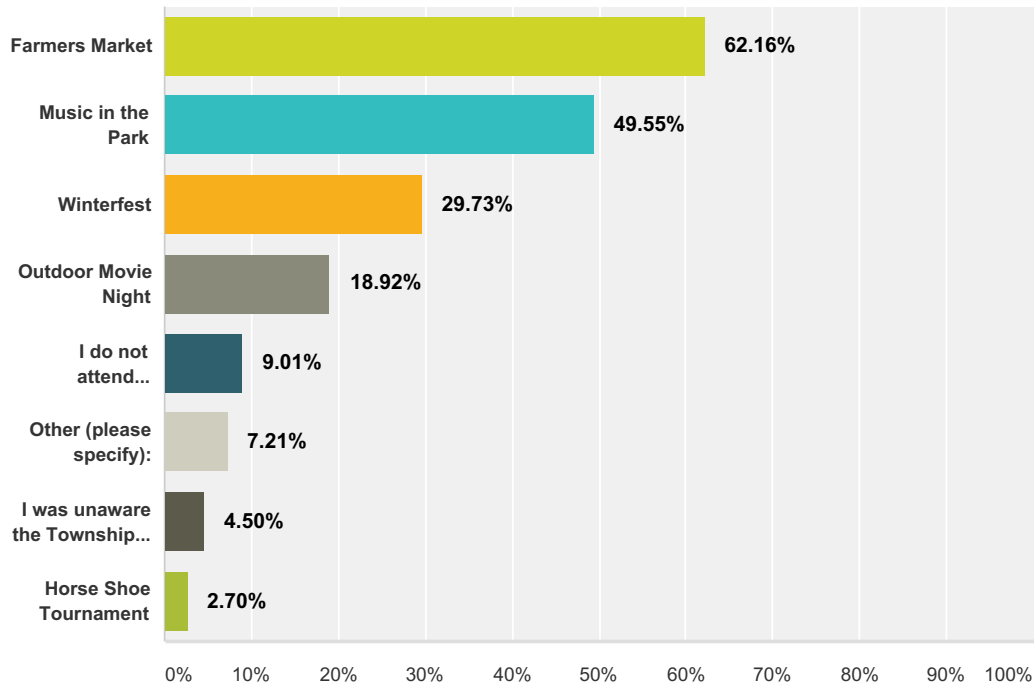
Clay Township Recreation Plan Survey

Football	5.93%	7
Softball	4.24%	5
Soccer	3.39%	4
Total Respondents: 118		

#	Other (please specify):	Date
1	Pickleball	8/31/2016 5:12 PM
2	tennis	8/31/2016 3:25 PM
3	why did we let the golf course die on harsens island	8/31/2016 2:52 PM
4	I just moved off the island last week. I'm handicapped so, I was not physically active. I went to Brown's field twice a day even in the winter. To get out... It had tables I could sit at.	7/19/2016 12:07 PM
5	Pickleball	7/18/2016 9:29 PM
6	Trapping	7/17/2016 12:30 PM
7	DNR open house	7/15/2016 7:38 AM
8	Pickleball	7/14/2016 5:11 PM
9	Pickle ball	7/13/2016 2:46 PM
10	Watwrsports	7/13/2016 8:32 AM
11	Pickle Ball	7/12/2016 11:07 PM
12	Pickle Ball at Browns Feild	7/12/2016 5:11 PM
13	Hockey	7/12/2016 3:17 PM
14	Horseback riding	7/12/2016 3:05 PM
15	Pickleball at Brown's field	7/12/2016 1:59 PM
16	SUP	6/27/2016 4:35 PM
17	hiking pickle ball	5/4/2016 4:10 PM

Q7 Do you attend any events in the Township? Check all that apply.

Answered: 111 Skipped: 55



Answer Choices	Responses
Farmers Market	62.16% 69
Music in the Park	49.55% 55
Winterfest	29.73% 33
Outdoor Movie Night	18.92% 21
I do not attend Townships hosted events	9.01% 10
Other (please specify):	7.21% 8
I was unaware the Township hosted events	4.50% 5
Horse Shoe Tournament	2.70% 3
Total Respondents: 111	

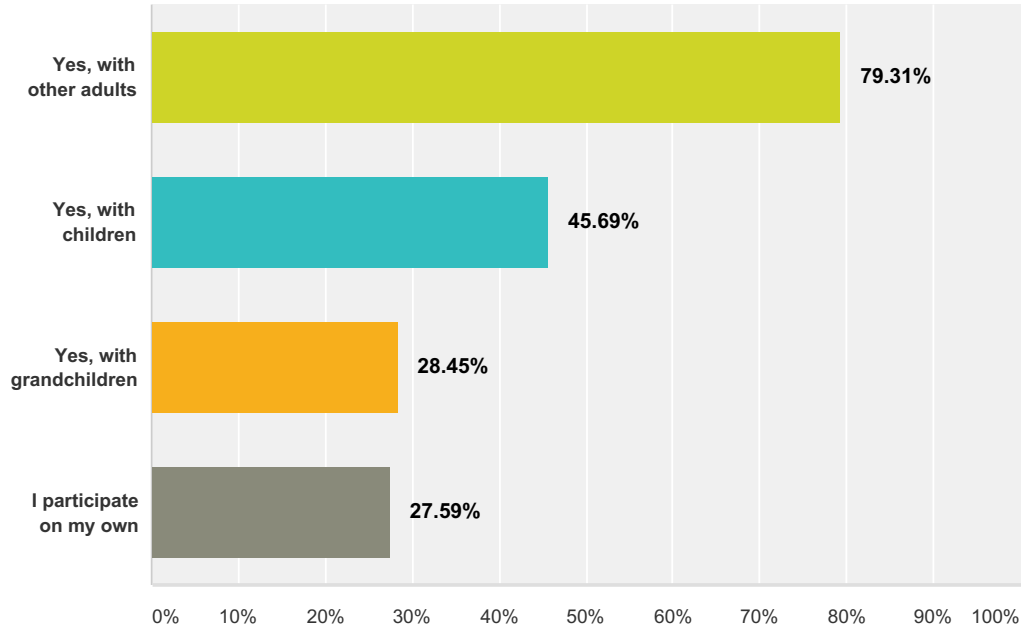
#	Other (please specify):	Date
1	HI field day	7/13/2016 2:47 PM
2	Lion's Craft fair Harsens Island and Clay park.	7/13/2016 8:10 AM
3	Only events on Harsens Island	7/13/2016 6:45 AM
4	Baseball games at Browne's Field	7/12/2016 11:07 PM
5	field day turkey shoot	7/12/2016 4:02 PM
6	Field day. Turkey shoot	7/12/2016 3:20 PM

Clay Township Recreation Plan Survey

7	I have not yet made it to these special events.	7/12/2016 2:19 PM
8	Fishing Events	6/27/2016 4:35 PM

Q8 Are you accompanied by others when participating in recreational activities in the township? Check all that apply

Answered: 116 Skipped: 50

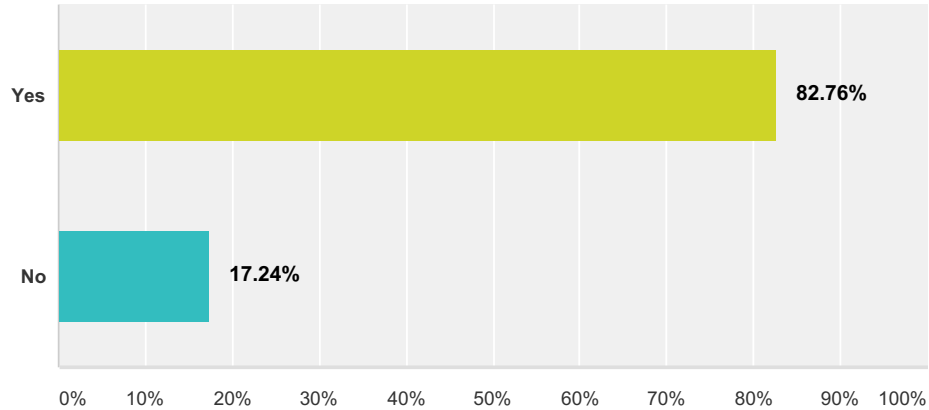


Answer Choices	Responses	
Yes, with other adults	79.31%	92
Yes, with children	45.69%	53
Yes, with grandchildren	28.45%	33
I participate on my own	27.59%	32
Total Respondents: 116		

Clay Township Recreation Plan Survey

Q9 Is it easy and convenient for you to participate in your recreational interests in Clay Township?

Answered: 116 Skipped: 50



Answer Choices	Responses
Yes	82.76% 96
No	17.24% 20
Total	116

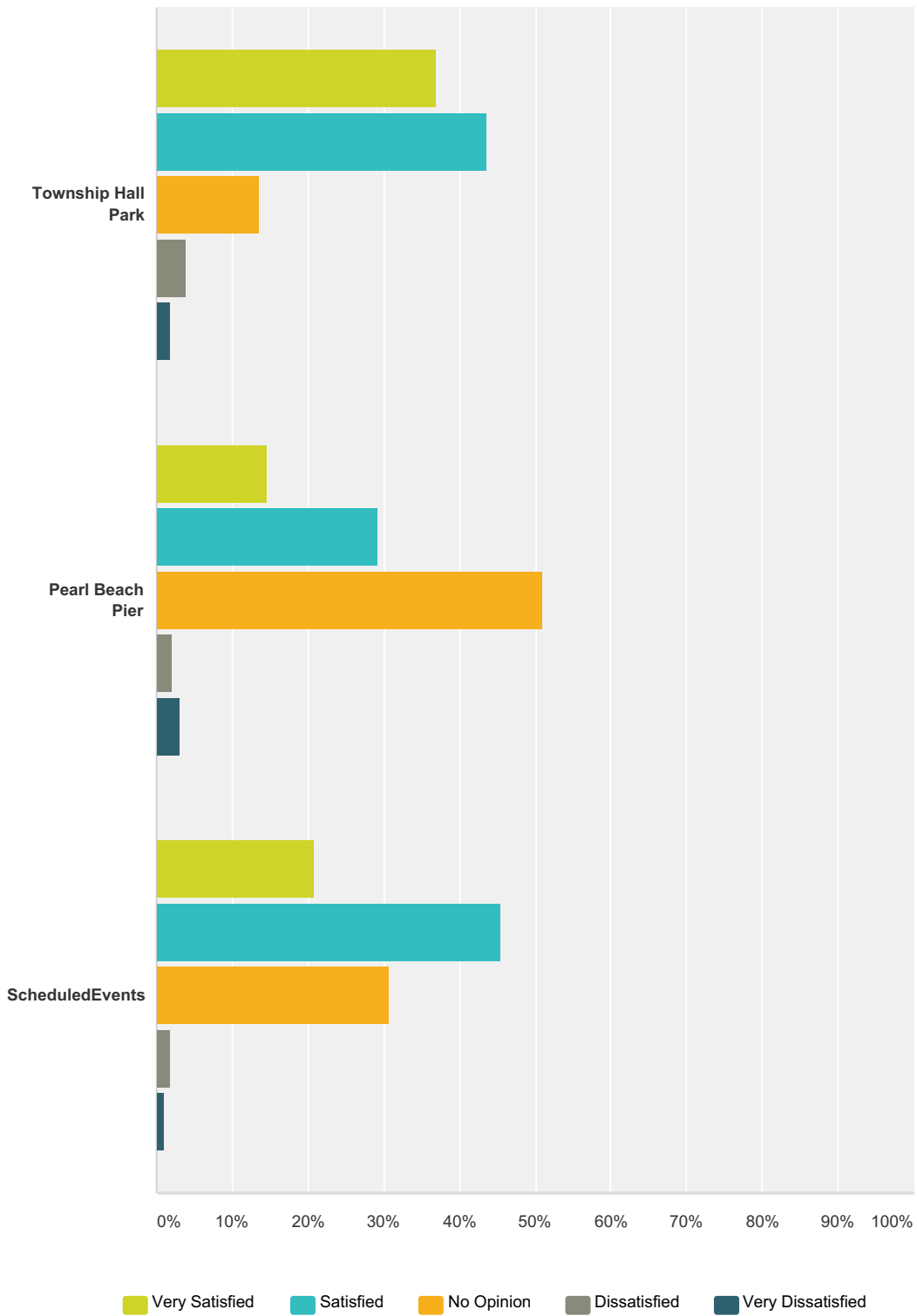
#	Please explain:	Date
1	Busy schedule, my own fault	8/31/2016 3:20 PM
2	ferry	8/31/2016 2:52 PM
3	Not enough shade trees at Brown's field AND I wish it had a splash pad there as not to pay the ferry fee. Not as expensive but, something to do in the heat of the summer. I also, think it's unfair that other home owners on the island aren't aloud to use the beach at the end of Monroe St. & South Channel	7/19/2016 12:07 PM
4	I live on Harsens Island, so water activities are easy. I have to travel out of the township for Pickleball in the winter.	7/18/2016 9:29 PM
5	Some yes, some no. Not bike friendly, limited public swimming	7/17/2016 12:30 PM
6	Living on Harsens Island makes it more difficult to take advantage of recreational activities on the mainland.	7/16/2016 11:51 AM
7	Live on Harsens Is. ClayTwpPark too far to walk	7/15/2016 7:38 AM
8	Please keep finding ways to make it more easily handicap accessible; non-paved areas difficult for walkers, canes and scooters.	7/13/2016 4:44 PM
9	But parking problems in pearl beach	7/13/2016 4:21 PM
10	live down the road from the park.	7/13/2016 3:41 PM
11	I wish there was more available on Harsens Island!	7/13/2016 2:46 PM
12	Own waterfront property	7/13/2016 8:55 AM
13	The Krispin drain lacks proper kayak parking/launching	7/13/2016 8:38 AM
14	Easy but always with a ferry fee.	7/13/2016 8:32 AM
15	My neighborhood is Harsens Island	7/13/2016 6:45 AM
16	Farmer's Market is not accessible to those who work. Why is it such a weird time?	7/12/2016 11:08 PM
17	We live close to bike path. Also live on the water so water activities convenient. Township Park also close by.	7/12/2016 9:48 PM

Clay Township Recreation Plan Survey

18	I think we really need island residents in total need an island beach and a real island bike and walking path.	7/12/2016 9:23 PM
19	No beaches and dock behind lega's is not inviting for my grandchildren	7/12/2016 8:21 PM
20	Close By. golf cart access..	7/12/2016 4:32 PM
21	wish there was access to wade in the water or let my dog swim in the water . also where is there access to the krispin drain did you not see that ? coming ???	7/12/2016 4:02 PM
22	Their are no SAFE way to walk or bike on the island, their is no access to the water to kayak easily their is very poor recreation opportunities in Clay Twp even thought there are so many recreational things to do, but they just are not developed. Clay needs to develop the Island as a Recreational hub for the Twp!!!! It would be great to have access to the water to kayak or get in the water and the Island needs a safe way to bike ride/walk/run on the Island	7/12/2016 3:50 PM
23	a bike path on Harsens Island is needed and would be safer	7/12/2016 3:47 PM
24	No safe biking paths . No access to wade in the water or walk on a beach not interested in a dock behind a bar	7/12/2016 3:20 PM
25	I live on the water, I do all activities here.	7/12/2016 2:31 PM
26	Farmer's Market hours are inconvenient. Ample notification for other events has not occurred for me.	7/12/2016 2:19 PM
27	cost to ride ferry	7/12/2016 2:10 PM
28	Sometimes. No good access to water for swimming or fishing.	7/12/2016 1:58 PM

Q10 How satisfied are you with the recreational offerings of Clay Township?

Answered: 105 Skipped: 61



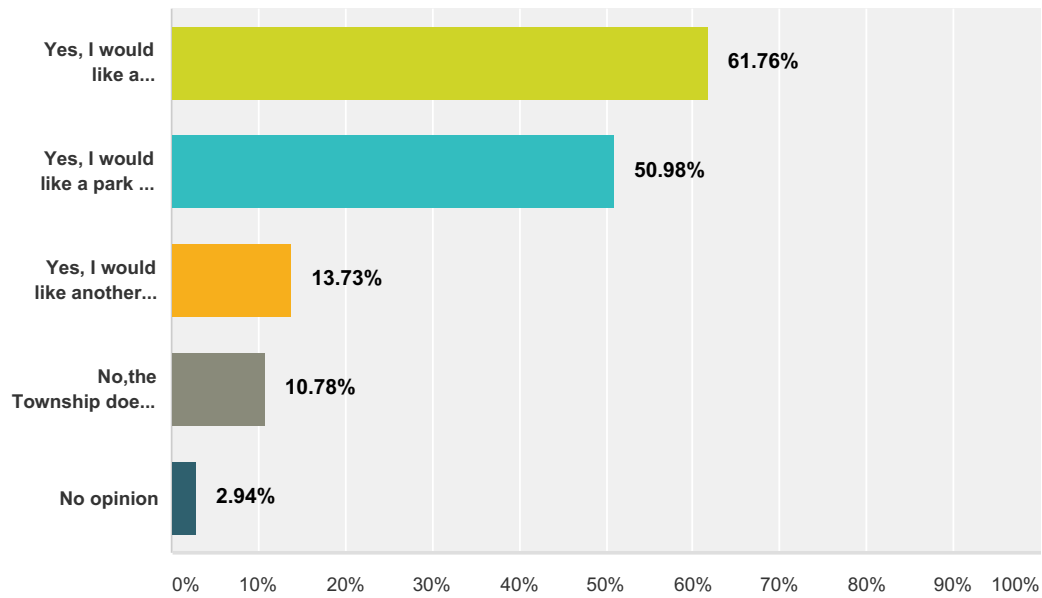
Very Satisfied	Satisfied	No Opinion	Dissatisfied	Very Dissatisfied	Total
----------------	-----------	------------	--------------	-------------------	-------

Clay Township Recreation Plan Survey

Township Hall Park	36.89% 38	43.69% 45	13.59% 14	3.88% 4	1.94% 2	103
Pearl Beach Pier	14.58% 14	29.17% 28	51.04% 49	2.08% 2	3.13% 3	96
ScheduledEvents	20.79% 21	45.54% 46	30.69% 31	1.98% 2	0.99% 1	101

Q11 Would you like to see another park in the Township?

Answered: 102 Skipped: 64



Answer Choices	Responses
Yes, I would like a waterfront park in the Township	61.76% 63
Yes, I would like a park on Harsens Island	50.98% 52
Yes, I would like another park in the Township	13.73% 14
No, the Township does not need another park	10.78% 11
No opinion	2.94% 3
Total Respondents: 102	

#	Comments:	Date
1	More parks! More green! More trees! More community!	8/31/2016 3:23 PM
2	would like a golf course	8/31/2016 3:09 PM
3	So many families have visitors that aren't on a beach or own a boat. Browns field splash pad would be great.	7/19/2016 12:11 PM
4	A waterfront, public swimming area on the Island!	7/17/2016 12:31 PM
5	Our area is beautiful, we should make plenty of areas to enjoy..	7/16/2016 9:17 PM
6	A public beach on Harsens Island would be greatly appreciated, as there is currently no public swimming access.	7/16/2016 11:53 AM
7	Don't believe there is room for another park on the Island but help on improving Browne's field would be welcome. Pickleball is the fastest growing sport in the U.S. right now. If we can't get the money to improve the courts on the Island then having Pickleball courts built somewhere else in the Township would be excellent.	7/14/2016 5:18 PM
8	I don't think we need another park on the mainland. I'm not sure about Harsens Island.	7/13/2016 11:59 PM
9	I would love a water activity on the island: a pool (my dream!) or a splash park, or a beach	7/13/2016 3:29 PM
10	The township needs an Island park with a beach. Our guests and visitors are upset that an ISLAND doesn't have ANY public beach area.	7/13/2016 9:01 AM

Clay Township Recreation Plan Survey

11	Residents beach on Harsens Island at turnaround	7/13/2016 8:36 AM
12	The Island offers some unique opportunities that the mainland cannot.	7/13/2016 7:21 AM
13	We have Browne Field on Harsens Island do not need another park.	7/13/2016 6:57 AM
14	The DDA should handle the funding for mainland. Recreational fund should come to Harsens Island.	7/13/2016 6:48 AM
15	There is a park on Harsens Island provided by the Harsens Island St Clair Flats Association however no township funding is allocated. That needs to change	7/12/2016 11:11 PM
16	I would like to see a splash pad at Browns field.	7/12/2016 10:36 PM
17	We do not travel by car to Harsens Island too often due to cost. We have biked across. The Township Park has the squirt park for the young kids, but not much available for teens. Don't know if there is space for putt=putt golf or pickle ball or rock-climbing wall.	7/12/2016 10:15 PM
18	Yes. An island beach	7/12/2016 9:26 PM
19	A park was given away in grand pointe subdivision that was deeded to be a perpetual neighborhood park . Barb shuot the assessor is aware	7/12/2016 8:29 PM
20	Need a nice beach	7/12/2016 8:18 PM
21	kayak parking on island	7/12/2016 6:35 PM
22	why not utilize the natural resources in the area rather then sink more money into a money pit like the twp park sprinkler and its high cost to maintain . also the dock is very unappealing to families located behind a popular local bar poor location choice. All that money spent on the sprinkler park could have bought a very nice piece of property on the water without such future expenses .	7/12/2016 4:14 PM
23	Please develop the island as a recreational hub for the Twp. Please bring Vistors to the island so we don't lose any more of our small businesses And please bring in a downtown San Souci Athority before we lose the Resturant due to the sanitation limitations of the Island, this will be the next business to close in my opinion. The Island is dying a slow death please stop this.	7/12/2016 4:09 PM
24	a walking path would be safer	7/12/2016 3:49 PM
25	Connected to the existing park by a lighted paved walking path	7/12/2016 3:34 PM
26	A park on Harsens would only work if there was a public beach available somewhere; a tourist attraction. A beach in Clay Township would also be welcome, but a landlocked park (in my opinion) would not be beneficial for either.	7/12/2016 2:23 PM
27	We need a beach, kayak launches and also a larger park similar to the Township Park which has been highly attended since built.	6/27/2016 4:35 PM

Clay Township Recreation Plan Survey

Q12 What, if any, improvements would you like to see to support recreational activities in Clay Township?

Answered: 57 Skipped: 109

#	Responses	Date
1	More types of activities	8/31/2016 10:35 PM
2	Please develop plans pickleball which older adults can play	8/31/2016 5:14 PM
3	Indoor pool.. Public beach	8/31/2016 5:02 PM
4	More community get togetherness and activities.	8/31/2016 3:23 PM
5	A beach, art studio NOT run by a church, but by local volunteers. A public marina.	8/31/2016 3:12 PM
6	buy the Harsens Island golf course	8/31/2016 3:09 PM
7	I would love to see a beach or at least a waterfront area and opportunities for small business.	7/26/2016 6:02 PM
8	Brown field have some type of water fun for the kids. The field would get much more use.	7/19/2016 12:11 PM
9	Add pickleball courts to township park. Might be able to just stripe the basketball courts and purchase portable nets. (\$150 for net). An indoor recreation center for walking, basketball, pickleball, volleyball during cold months would be wonderful.	7/18/2016 9:32 PM
10	A Civic building	7/18/2016 6:28 PM
11	A bike path on throughout Harsens Island and a public access beach on the Island. Increased hunting/trapping public opportunity.	7/17/2016 12:31 PM
12	Yes, I would Love a waterfront park....and make improvements on the ones we have, more for the kids, they talked about a snow hill at Browns Field, that would be great! Something for all on winter break.....accesses for the HI Drain. I would also, with all the bicycle traffic on the island, love to see a path for them instead of blocking and aggravating cars.... I think it is becoming a huge problem. I have nothing against the bicyclers, but they have blocked the entire road and feel it's not safe for them or the ones driving.	7/16/2016 9:17 PM
13	I would LOVE to see a paved bike/walking path on Harsens Island and also a public beach on the Island.	7/16/2016 11:53 AM
14	Parking for Crispin Drain access	7/14/2016 7:21 AM
15	Allow biking on the trail along the marsh. Why can't we bike there. You allow motor boats in the marsh.	7/13/2016 11:59 PM
16	A water park on Browne's Field	7/13/2016 7:37 PM
17	see above re: ease of use for physically challenged	7/13/2016 4:46 PM
18	Water or beach park for day outings over by the launch at Krogers	7/13/2016 4:24 PM
19	It would be wonderful to finally have that beach on the mainland - more for making us a destination than for me	7/13/2016 3:29 PM
20	A safe place on Harsens Island to walk and bike, especially with children. Pickle ball courts, how about court lines applied to the basketball courts to be used temporary nets.	7/13/2016 3:05 PM
21	Krispen drain access parking. Harsens Island boys club turned into public park...beach is already there. Safe bike/hike path on Harsens Island.	7/13/2016 11:59 AM
22	These comments will all be in regards to Harsens Island. We would like drop in points and parking for kayaking. If there is an area for a public beach that would be a great addition. We live in the interior and would like to show visitors the water but there's no place to go. Better bike/walking paths also.	7/13/2016 9:14 AM
23	Better access for the Kayak path (parking, signage) Bike/walking path along M154. It's too dangerous currently to walk or ride bikes on that road. Public beach area on the island. Why does an ISLAND not have a public beach already?	7/13/2016 9:01 AM
24	I would really like to have a walking path on Harsens Island. Even though traffic is generally light, I do not feel it is safe to walk on the roads.	7/13/2016 8:55 AM
25	A biking/jogging lane and a State Park on Lupenski's island.	7/13/2016 8:25 AM

Clay Township Recreation Plan Survey

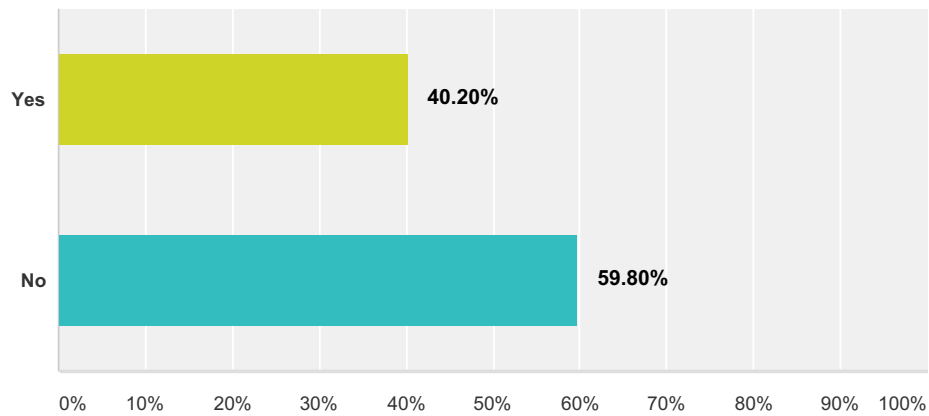
26	Web Camera at the ferry to make planning easier	7/13/2016 7:53 AM
27	Offer financial support to Brown's Field and the Lions Hal on the Island. Both offer many community activities that the mainland cannot.	7/13/2016 7:21 AM
28	None, it is just a shame that people don't read and pay attention to all the activities in Clay Township. Because we do have a lot to offer on and off the Island too.	7/13/2016 6:57 AM
29	Access to waterways on Harsens Island. SAFE and accessible bike paths/trails/cross country skiing,freighter viewing.	7/13/2016 6:48 AM
30	I think we need park, senior center, pool, nature walk, bike path, kaya area, activity center, on Harsens Island. We pay large amount of tax money for nothing we can use near us.	7/13/2016 6:39 AM
31	Kayak launch	7/13/2016 3:31 AM
32	Continued, unwavering support of the library. It is the main, year-round recreational activity to a large portion of the community and it wasn't even mentioned in this survey. It's available to the infant and the 80 year old, in the sun and in the snow and everyone in between. It is available to the snowbird on vacation, it is available when the ferry can't run, it is important to all parts of the community.	7/12/2016 11:13 PM
33	Harsens Island residents see a portion of the parks and recreation funding spent on Harsens Island	7/12/2016 11:11 PM
34	Improved small boat launch at St. John Marsh and bike trail.	7/12/2016 10:15 PM
35	True restrooms at Browns field. Like they had way back in the day. Even if they remain locked until events it would be nice to have a real restroom to use.	7/12/2016 10:08 PM
36	Island beach. Parking at the pier. Island bike/walk path.	7/12/2016 9:26 PM
37	a safe bike path and a beach ..boys club????	7/12/2016 8:29 PM
38	More picnic areas and maybe more covered areas for people out of the sun	7/12/2016 6:33 PM
39	More activities for children to be active outdoors. Perhaps a soccer league or other sports.	7/12/2016 6:13 PM
40	Dog Park if we have inexpensive property for it	7/12/2016 5:13 PM
41	A Beach.	7/12/2016 4:33 PM
42	A waterfront park on Harsens Island, preferably in Sans Souci.	7/12/2016 4:26 PM
43	I would like to see safe biking areas and an actual beach . It is a shame that the Boys Club has been unused for over 40 years and that the Hunt Club also slipped out of the twps. hands :/ ... And why can there not be some place to allow parking at the turn around????? A beautiful view and property unusedWHY????? ABSOLUTLY NO MONEY has been allocated for Harsens Island	7/12/2016 4:14 PM
44	Please bring a linear park (bike trails) and not just next to the road. Bring it thur the middle of the Island so people can enjoy the natural beauty the Island has to offer The Island could connect people to nature and showcase the preservation of open space and wildlife habit. Connect the trail to the "Bridge to Bay trail" with signage and rest stops with bike racks, bring it into San Souci, this could be a local attraction. People want livable communities where they can commute and socialize by foot and bikes. Recent socio economic and cultural trends highlight the desire for walkable and bike able communities. Also Harsen Island is an Island with NO ACCESS to water make a water access area like a beach and we need a kayak launch	7/12/2016 4:09 PM
45	a bike path or walking path on Harsens Island	7/12/2016 3:49 PM
46	A lighted paved walking path outside of the township park path.	7/12/2016 3:34 PM
47	More for teenagers (not another skate park. Lots of drugs there). A street light by the Marsh path so people can cross safely to the marsh, many people live on the other side of the dangerous road and don't use the path because of the road. Upgrade Marsh path, needs some maintance.	7/12/2016 3:23 PM
48	It seems like the rink is always full in the winter... Maybe another one somewhere? A paddle park would be cool...	7/12/2016 3:19 PM
49	Paddling /kayak launch facility Trails for horse riding/cross country skiing	7/12/2016 3:07 PM
50	A park with a rest room on Harsens Island would be nice.	7/12/2016 2:40 PM
51	AN INDOOR POOL. I can't take my child(ren) to swim lessons at the Algonac pool in the summer because the classes are in the morning during the week and I work full time. Plus, the Algonac is outdoor and inclement weather is a threat. Currently I have to drive all the way over to New Baltimore to take swim lessons or do adult lap swim.	7/12/2016 2:23 PM
52	More advertisement. A quarterly township newspaper maybe?	7/12/2016 2:17 PM

Clay Township Recreation Plan Survey

53	Help the Little League with proposed improvements at their complex. Including new concessions stand with built in real bathrooms instead of Porta potties, scoreboards, pavillion and the list goes on and on. They serve over 300 children in the entire Algonac Community Schools district. And could easily serve many more with these improvements.	7/12/2016 2:14 PM
54	bike path to keep them OFF the roads. they block the roadway 2-5 wide and will not move over and police won't ticket them.	7/12/2016 2:12 PM
55	Repair the tennis courts at Brown's field and make one of the tennis courts into two pickleball courts	7/12/2016 2:01 PM
56	More access to water for fishing, swimming, canoeing is needed. I liked the proposal to purchase the island in munchies bay for a park.	7/12/2016 1:59 PM
57	More Recreational Activities, Special Events. A Community Center. Address all abilities. An accessible Kayak Launch (or two) would be great! County PARC has resources for this.	6/27/2016 4:35 PM

Q13 Do you belong to any community organizations or recreational groups?

Answered: 102 Skipped: 64



Answer Choices	Responses	
Yes	40.20%	41
No	59.80%	61
Total		102

#	If Yes, which ones?	Date
1	How do I find out what's available? And what's involved?	8/31/2016 3:24 PM
2	Woman's Life	8/31/2016 3:13 PM
3	Algonac -Clay Historical Society , HISCFA Council on Aging	8/18/2016 2:20 PM
4	HISCFA	8/4/2016 2:45 PM
5	Historical Society and the group for Browns field. I forgot the name.	7/19/2016 12:16 PM
6	Marine City Senior Center. Bluewater Pickleball club.	7/18/2016 9:33 PM
7	MDNR	7/17/2016 12:32 PM
8	Harsens Island Association	7/16/2016 9:18 PM
9	The HI Pickleballers! ??	7/14/2016 5:18 PM
10	Harsens island Historical society and Hiscfa	7/14/2016 7:22 AM
11	HI Home owners	7/13/2016 7:37 PM
12	Harsens Island Garden Club, Historical Society, HISCFA, St. Mark's	7/13/2016 4:50 PM
13	VFW post	7/13/2016 4:25 PM
14	Fraternal Order of Eagles.	7/13/2016 3:44 PM
15	HISCFA, HISCFHS, STEAM exercise classes	7/13/2016 3:32 PM
16	Lionessess, Garden Club, HISCFA, Harsens Island Historical Society, pickle ball group, Council on the Aging,	7/13/2016 3:11 PM
17	Save Our South Channel Lights, HISCFA, and the HI Lions organizations	7/13/2016 2:49 PM
18	Harsens Island Historical society,HISCFA	7/13/2016 12:01 PM
19	Flats Business Association	7/13/2016 8:36 AM

Clay Township Recreation Plan Survey

20	Flats Assoc.	7/13/2016 8:13 AM
21	Lions on HI , St. Clair Flats Assoc. ,HI Historical Society	7/13/2016 7:23 AM
22	Reader's Cove, Director on the HISCFA, also I am in charge of rentals at the Pavilion at Browne Field.	7/13/2016 6:59 AM
23	HISCFA, Historical Society	7/13/2016 6:51 AM
24	Harsens Island St Clair Flats Association	7/12/2016 11:11 PM
25	United States Power Squadron	7/12/2016 10:15 PM
26	St Clair flats Association	7/12/2016 10:09 PM
27	ABYA	7/12/2016 10:07 PM
28	Island	7/12/2016 9:27 PM
29	Little league	7/12/2016 6:14 PM
30	Former HI Conservation Association HI Historical Society	7/12/2016 4:27 PM
31	Chair of the immaculate conception perch run	7/12/2016 3:20 PM
32	Girl Scouts	7/12/2016 2:42 PM
33	HISCFA	7/12/2016 2:40 PM
34	HISCFA	7/12/2016 2:23 PM
35	ACS Community Garden, the kids are in swim classes at Lions Pool	7/12/2016 2:22 PM
36	Algonac Little League	7/12/2016 2:14 PM
37	Hiscfa	7/12/2016 2:01 PM
38	Woman's Life Blueways Lake St Clair Walleye Association St Clair County PARC Access to Recreation	6/27/2016 4:35 PM

Clay Township Recreation Plan Survey

Q14 Any additional comments you would like to share about parks and recreation in Clay Township?

Answered: 28 Skipped: 138

#	Responses	Date
1	I would like to see some year around activities like yoga, Zumba, dance, tumbling crochet or sewing and art classes like chalk or paint	8/31/2016 10:36 PM
2	Thanks for doing what you do.	8/31/2016 3:24 PM
3	Continue to find ways to enhance healthy ways for all ages to participate in a variety of recreational activities.	8/18/2016 2:20 PM
4	I think more things should be done to Brown's field with the high taxes the islanders pay. As it is, islanders pay all expenses for the field.	7/19/2016 12:16 PM
5	Glad to see the increase in public recreation opportunities since I was a kid. Need better bike infrastructure.	7/17/2016 12:32 PM
6	The splash pad is great!	7/16/2016 11:54 AM
7	Stop putting up tons of little signs to promote events. One banner and two little signs are plenty. It makes a beautiful park look trashy.	7/14/2016 12:01 AM
8	See what other communities have done that is cost effective re: physically challenged ease of use	7/13/2016 4:50 PM
9	The Township Park is a fabulous addition to Clay Twp! Let's keep trying for the beach park!	7/13/2016 3:32 PM
10	I would like to see some of my tax dollars spent on Harsens Island for recreation	7/13/2016 3:11 PM
11	They are kept up nicely. Thank you!	7/13/2016 2:49 PM
12	No new park....on Harsens Island	7/13/2016 8:13 AM
13	We need to offer bike trails on the island and on the mainland.	7/13/2016 7:23 AM
14	None	7/13/2016 6:59 AM
15	Previous efforts to stir interest and action among the 'agencies', legislative reps and the twp. have generally been ignored.	7/13/2016 6:51 AM
16	Park & recreation is nothing on the island. We don't have our golf course anymore. So sad nothing for us!!	7/13/2016 6:40 AM
17	Township Park was a great idea and now a wonderful asset. Wish it were larger.	7/12/2016 10:15 PM
18	Use natural resources rather than dumb money into parks not on the water and behind a bar ..can't even see it from the road	7/12/2016 8:31 PM
19	doing a great job	7/12/2016 6:36 PM
20	If the Township wishes to attract visitors/tourists to this area, a waterfront park on Harsens Island would be a big step to achieve that objective.	7/12/2016 4:27 PM
21	Its a Joke and embarrassment that our twp logo endorses water recreation yet we have no lake access other then a dock behind a local bar that is uninviting to families. an a money pit sprinkler system .	7/12/2016 4:18 PM
22	Please consider adding a walking or bike path on Harsens Island	7/12/2016 3:50 PM
23	We are a waterfront community. Promote our greatest asset!	7/12/2016 3:35 PM
24	Doing a great job! Keep it up!	7/12/2016 3:24 PM
25	Maybe host a possible ice man type run/bike event? Would be a great location for an event like that w/ the island near	7/12/2016 3:20 PM
26	none	7/12/2016 2:23 PM
27	We love the Clay Twp park by the police stn. I don't know where the pearl beach park is. We're fairly new to Clay Twp. A map of park locations, public fishing holes and trails would be really, really helpful. We went to Winterfest last year and loved it. All the events are so great. We just miss them sometimes because we don't know about them until it's too late.	7/12/2016 2:22 PM

Clay Township Recreation Plan Survey

28	Focus on quality, safety, all ages and all abilities.	6/27/2016 4:35 PM
----	---	-------------------

Transmittal Letters to adjacent communities

Post-Completion Certification Reports