

COMPREHENSIVE SAFETY ACTION PLAN

April 2, 2026

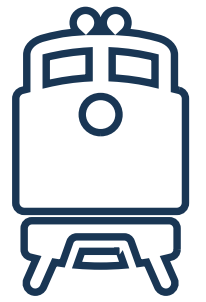
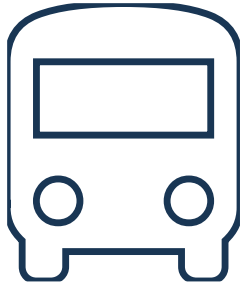


BACKGROUND

The City is creating a Comprehensive Safety Action Plan to make streets safer for everyone – whether you walk, bike, drive, take transit or use mobility aids.

North Charleston has experienced a high number of fatal and serious injury crashes.

Crashes impact families, schools, neighborhoods, and services.



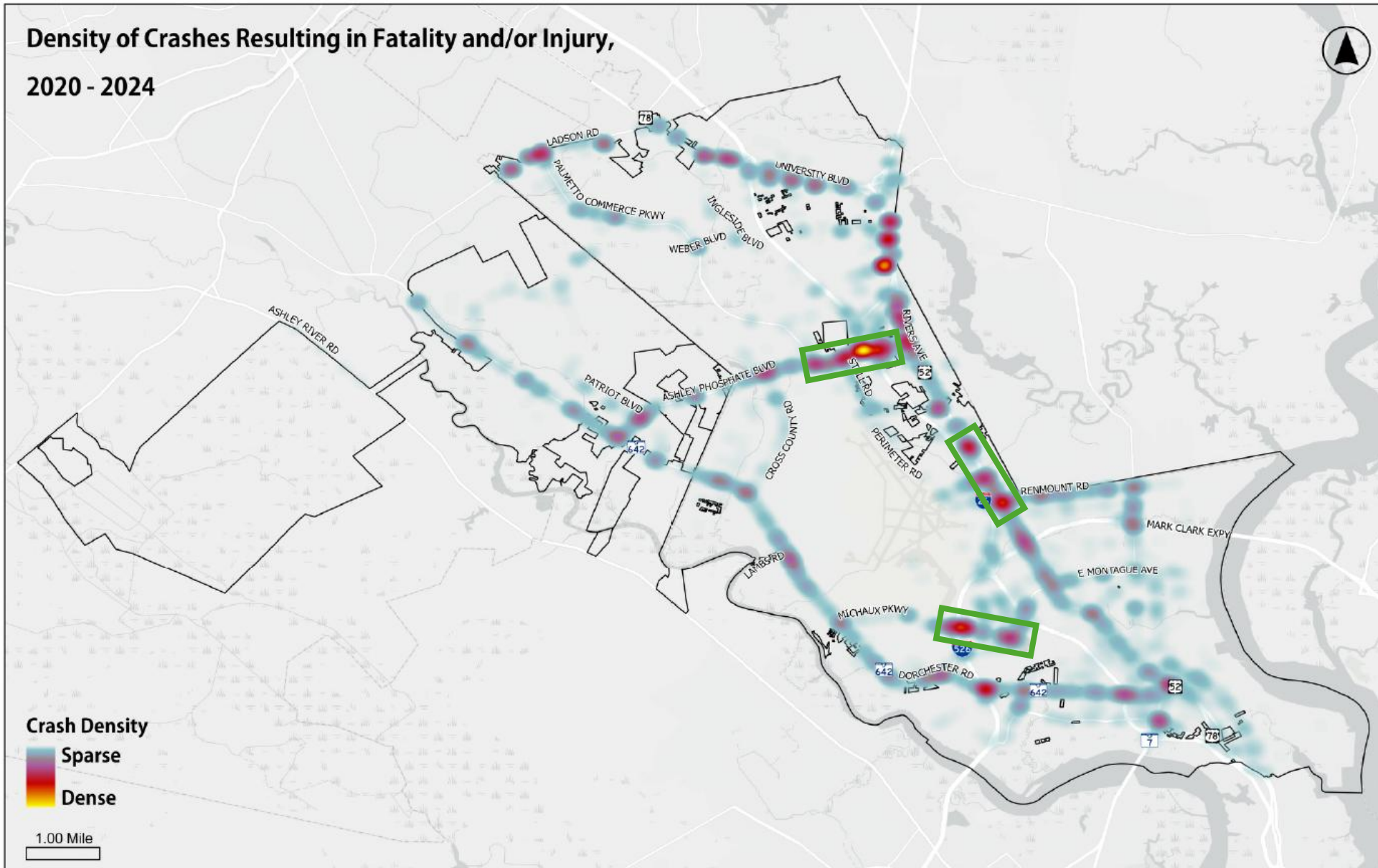
SAFETY ACTION PLAN

- A citywide effort to reduce traffic-related fatalities and serious injuries
- Existing Conditions Analysis helps
 - Identify where and why crashes happen
 - Prioritize safety improvements
- Evaluates safety for all road users
 - Pedestrians
 - Bicyclists
 - Drivers
 - Transit Users
- Combines crash data with community experience to create a clear set of safety priorities and actions



Density of Crashes Resulting in Fatality and/or Injury,

2020 - 2024



Crash Hotspots

Ashley Phosphate Blvd –
from Rivers Ave to
Southrail Rd

I-26 and Rivers Ave –
from Aviation Ave to
Remount Rd

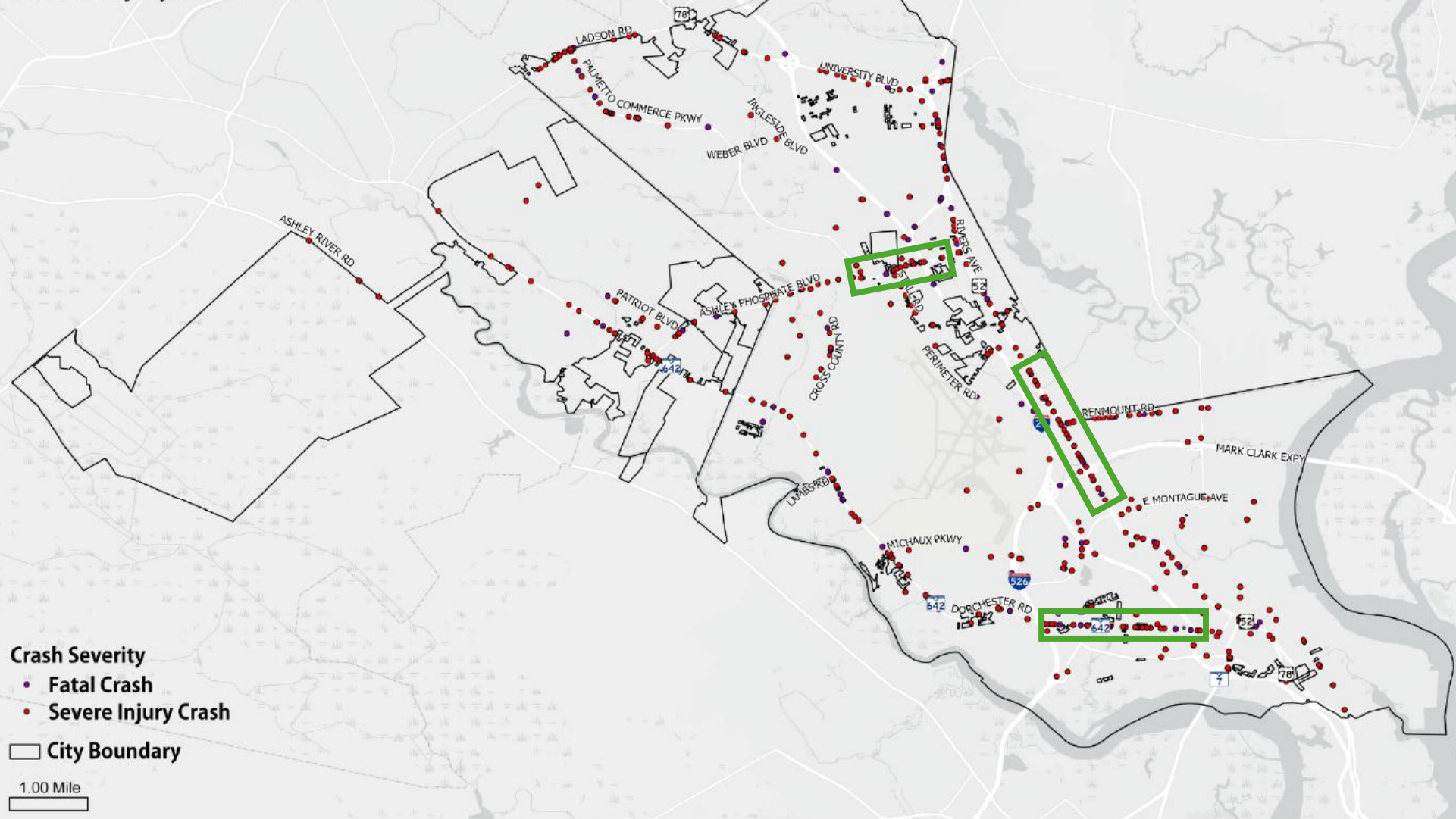
I-526 and International
Blvd

Crash Density



1.00 Mile

Crashes Resulting in Fatality or Serious Injury, 2020 - 2024



Crash Severity

- Fatal Crash
- Severe Injury Crash

□ City Boundary

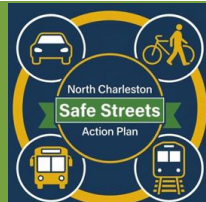
1.00 Mile

Corridors with a high incidence of fatal and severe injuries

Ashley Phosphate Blvd – from Rivers Ave to Southrail Rd

I-26 and Rivers Ave – from Aviation Ave to Remount Rd

Dorchester Rd – I-26 to I-26

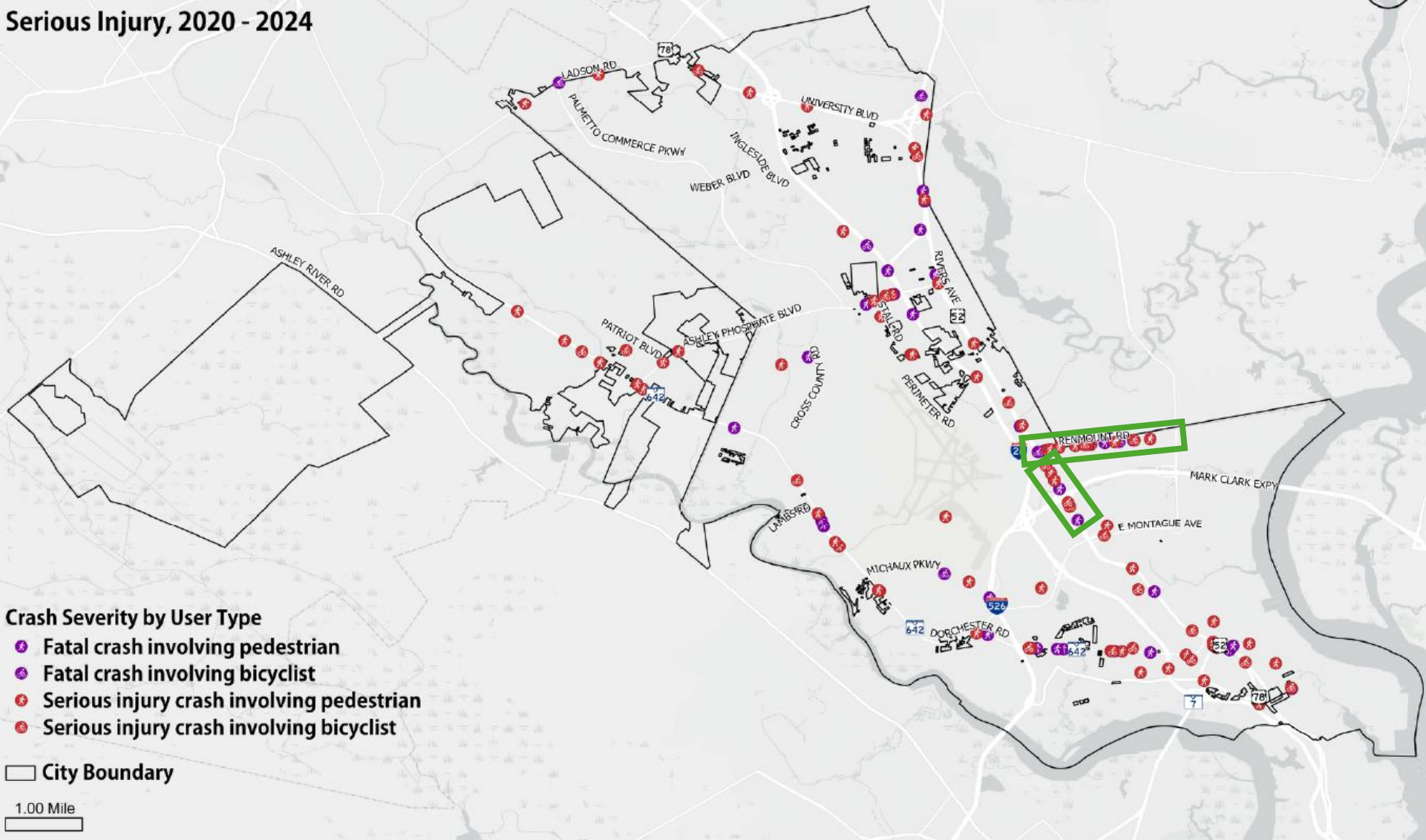


PEDESTRIAN AND BICYCLIST SAFETY

- Pedestrians and bicyclists are among the most vulnerable road users
 - These incidents are more likely to result in severe injury or death
- Patterns show higher concentrations near
 - Major roadways
 - Commercial areas
 - Corridors with higher speeds



Crashes Resulting in Fatality or Serious Injury, 2020 - 2024



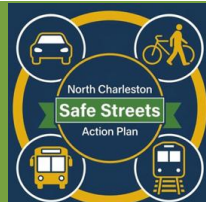
- Crash Severity by User Type**
- Fatal crash involving pedestrian
 - Fatal crash involving bicyclist
 - Serious injury crash involving pedestrian
 - Serious injury crash involving bicyclist

City Boundary
1.00 Mile

Corridors with a high incidence of fatal and severe injuries involving bicycles and pedestrians

Remount Rd – from I-26 to N Rhett Ave

Rivers Ave – from Remount Rd to Mark Clark Expwy



COMMUNITY DATA IS IMPORTANT

- Crash data does not capture near misses, everyday walking challenges, or locations that feel unsafe

How your feedback is used

- Public comments help:
 - Identify unsafe locations not shown in crash data
 - Prioritize future safety projects
- Feedback directly influences recommendations



WE NEED YOUR INPUT!

Tell us where you feel unsafe and what would make your trips more comfortable. Residents, workers, and visitors are all invited to share their experiences.

Answer the following questions of

- Where are crashes happening?
- Why are they happening?
- What can we do to prevent them?

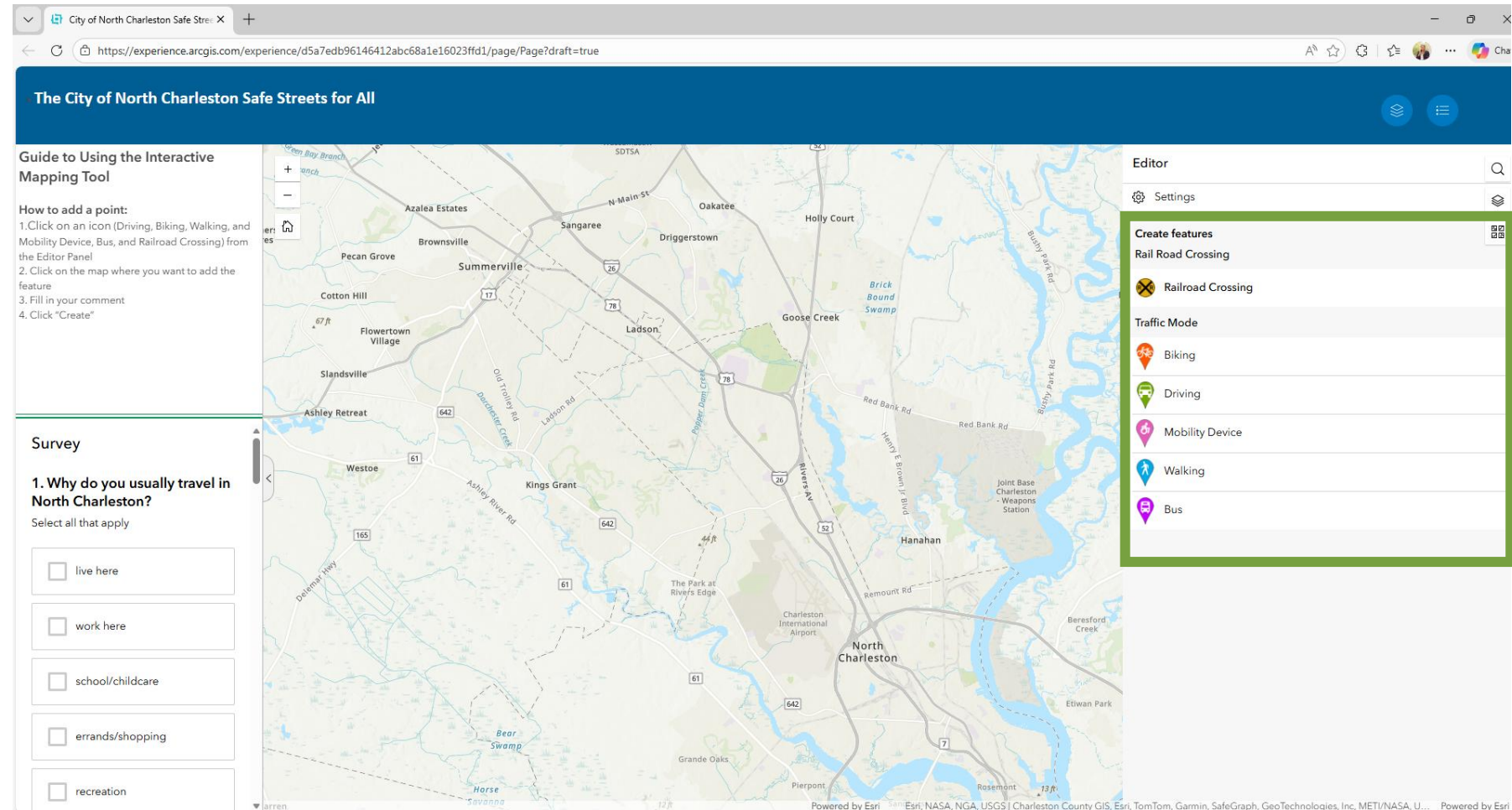
**Scan the QR code
below to provide
your input**



HOW TO USE THE INTERACTIVE MAP

This interactive map is where the public can add their comments

Start by selecting the traffic mode icon you would like to place on the map.



HOW TO USE THE INTERACTIVE MAP

Place the icon on the map where you think the improvement should happen

Leave your comment in the box on the right-hand side of the screen

Hit “create” in the bottom right-hand side of the screen to publish your comment

The City of North Charleston Safe Streets for All

Guide to Using the Interactive Mapping Tool

How to add a point:

1. Click on an icon (Driving, Biking, Walking, and Mobility Device, Bus, and Railroad Crossing) from the Editor Panel
2. Click on the map where you want to add the feature
3. Fill in your comment
4. Click "Create"

Survey

1. Why do you usually travel in North Charleston?

Select all that apply

- live here
- work here
- school/childcare
- errands/shopping
- recreation

Create features

Traffic Mode

Mode

Bus

Comment

Create

HOW TO USE THE INTERACTIVE MAP

- Complete the survey on the left-hand side of the screen
- Hit “submit” at the bottom of the survey when completed

The screenshot displays the 'The City of North Charleston Safe Streets for All' interactive map. The interface includes a header, a map, a 'Create features' panel on the right, and a 'Survey' form on the left. The survey form is highlighted with a green border.

Survey

1. Why do you usually travel in North Charleston?
Select all that apply

- live here
- work here
- school/childcare
- errands/shopping
- recreation

Create features

Settings

Traffic Mode

Mode: Bus

Comment

Create

WE NEED YOUR HELP!

Please assist us in gathering as much feedback as possible by sharing the flyer within your community.

The survey will remain open until July 31, 2026.

SAFE STREETS ACTION PLAN



We need your voice!

North Charleston is in the process of developing a Safety Action Plan to make it safer and more comfortable to walk, bike, drive, ride transit, and use mobility aids across the city.

What could change;

- Safer street crossings for pedestrians and bicyclists, such as visible crosswalks and clearer bike crossings
- Improved lights along streets and at intersections
- Strategies to cut speeding, distracted driving, and aggressive driving.

Tell us where you feel unsafe and what would make your trips more comfortable. Residents, workers, and visitors are all invited to share their experiences.



Thank you for helping make North Charleston's streets safer for everyone!

Mead
& Hunt

City of
NORTH
CHARLESTON



Guide to Using the Interactive Mapping Tool

How to add a point:

1. Click on an icon (Driving, Biking, Walking, and Mobility Device, Bus, and Railroad Crossing) from the Editor Panel
2. Click on the map where you want to add the feature
3. Fill in your comment

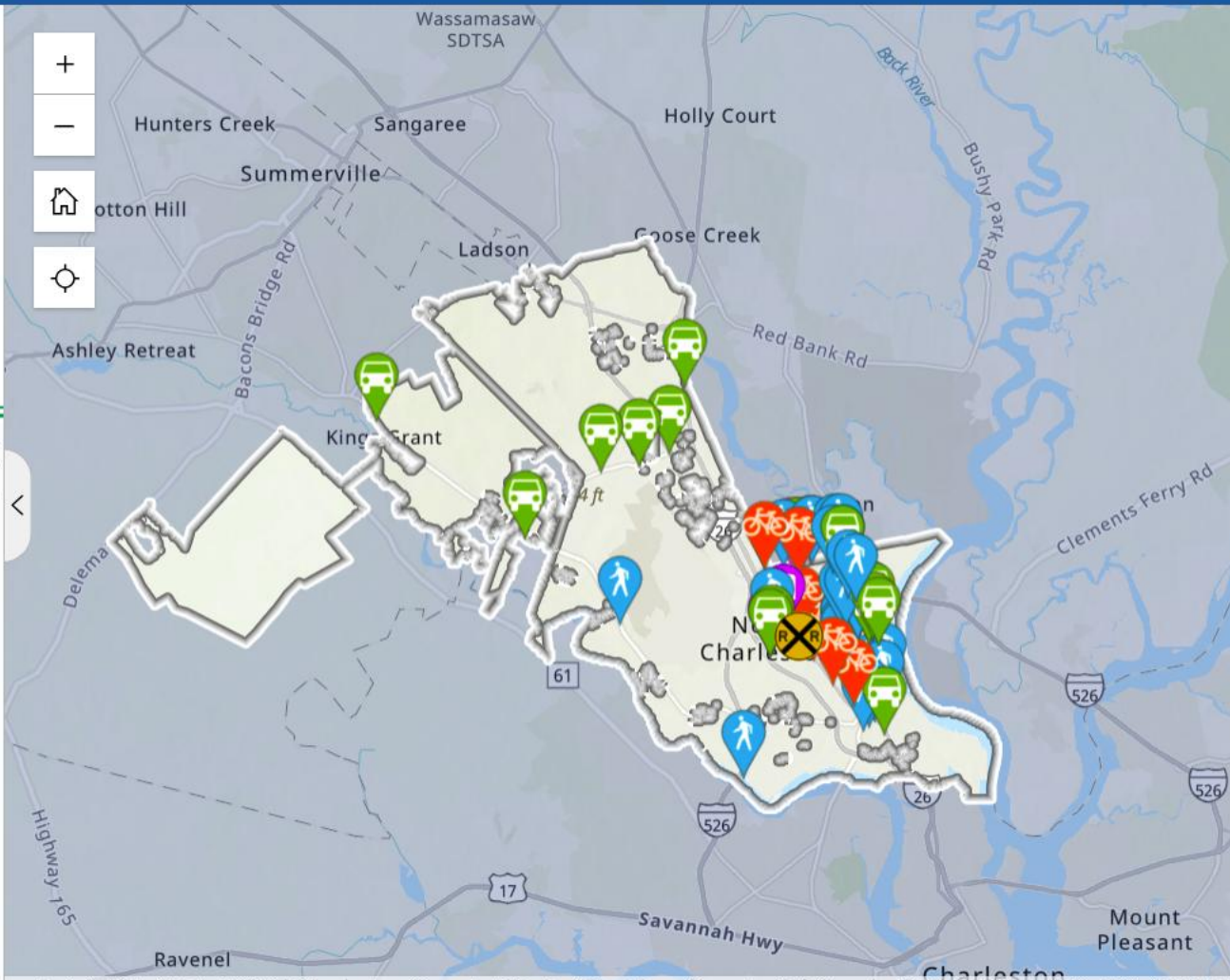
Survey

1. Why do you usually travel in North Charleston?

Select all that apply

live here

work here



Editor

Settings

Create features

Rail Road Crossing

Railroad Crossing

Traffic Mode

Biking

Driving

Mobility Device

Walking

Bus

Esri, NASA, NGA, USGS | Charleston County GIS, Esri, TomTom, Garmin, SafeGraph, METI/NASA, USGS, EPA, NPS, USDA, USFWS

Powered by Esri



Thank you!

