



# INFRASTRUCTURE DEVELOPMENT RELATIVE TO CIBOLO

---

TxDOT – New Braunfels Area Office

August 23, 2018



# The Discussion

1 Safety Message

2

3

4

# Champions of Safety

## Clear minds make good drivers!

- In 2017 alcohol and drugs contributed to 23,674 crashes in Texas
- 995 people died and 2,159 were seriously hurt in alcohol-related crashes in 2017
- About 27 percent of Texas highway fatalities involve alcohol
- In San Antonio area 2017 saw 2,765 alcohol-related crashes, killing 73 people and seriously hurting 214 others

## Driver seats are for drivers!

- Nearly 9 of 10 Texans admit to phone use while driving
- In 2017 about 20 percent of all crashes in Texas involved distracted driving
- Distracted driving killed 444 people in Texas last year; seriously injured 2,889
- Distracted driving is ANY activity that pulls attention away from driving
- Eating and external distractions are found to be bigger problems than phone use

## Click it or Ticket!

- 929 Texans killed in 2017 because they weren't buckled
- About half of fatalities involving pickup trucks weren't buckled
- Seatbelts reduce risk of fatality by 45 percent in cars, up to 60 percent in pickup trucks
- Under Texas law unbuckled passengers can be ticketed; if they are minors, the driver will be ticketed

**NOV 7<sup>th</sup>, 2000**

- Last Day of no reported fatalities on TxDOT roadways – Lets End the Streak!

# The Discussion

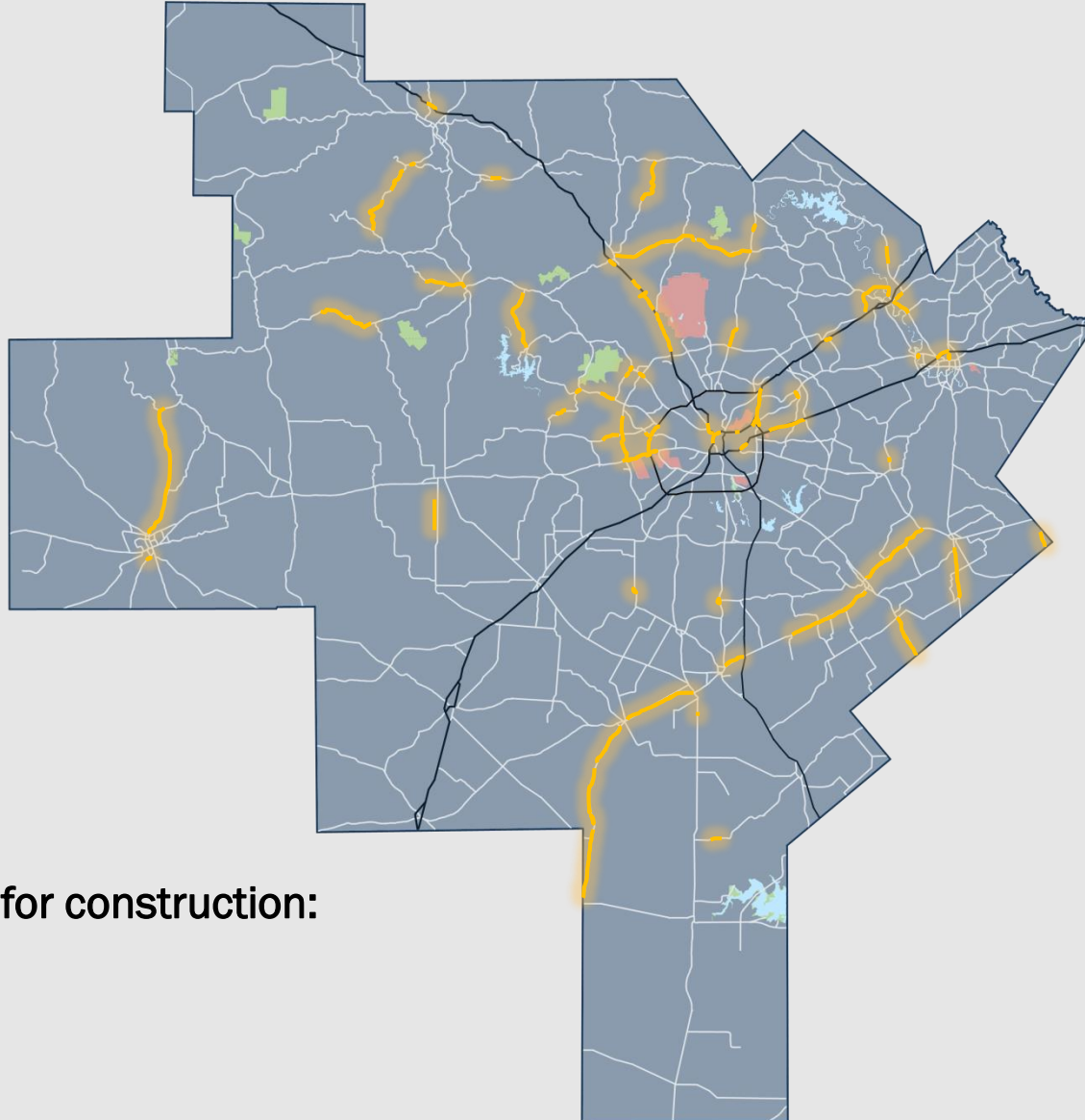
**1** Safety Message

**2** The Big Stuff

**3**

**4**

# Construction Projects across the District



**Under contract for construction:**

- 85 projects
- \$1.1 Billion



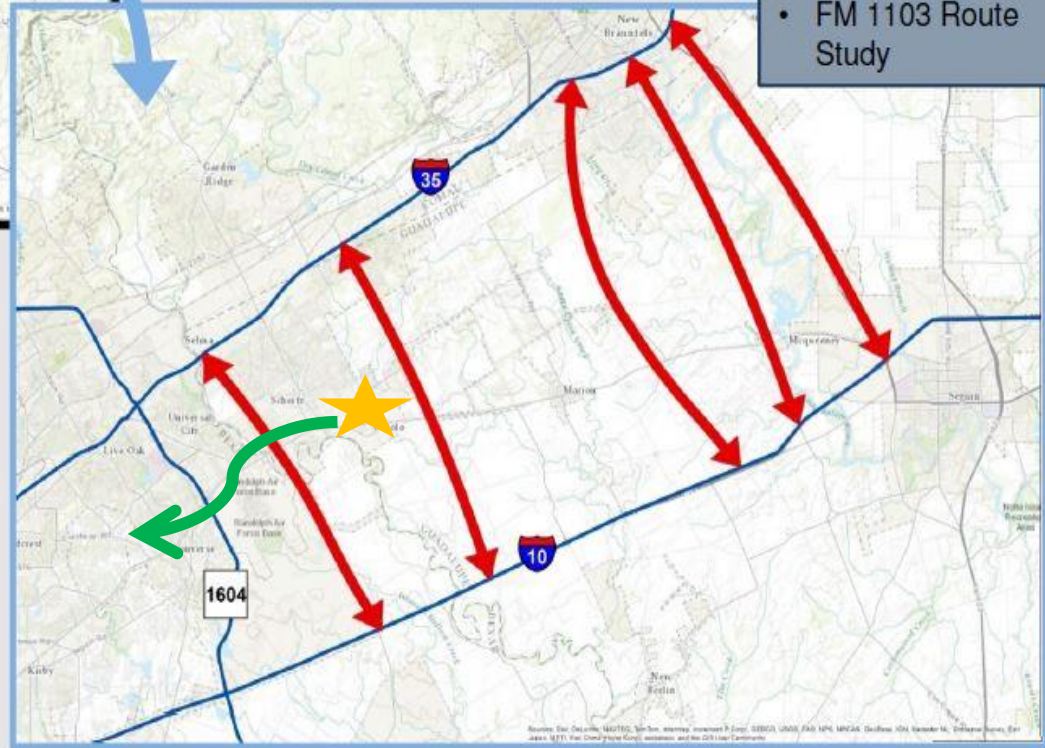
# Connecting Arterial Improvements Strategy



Alternative for possible improvement of arterial roads connecting I-10 to I-35 northeast of San Antonio and I-35 to Loop 1604 in southwest San Antonio.

## Inspired by:

- Public/Stakeholder Suggestion
- FM 1103 Route Study



**PRELIMINARY**  
SUBJECT TO FURTHER STUDY







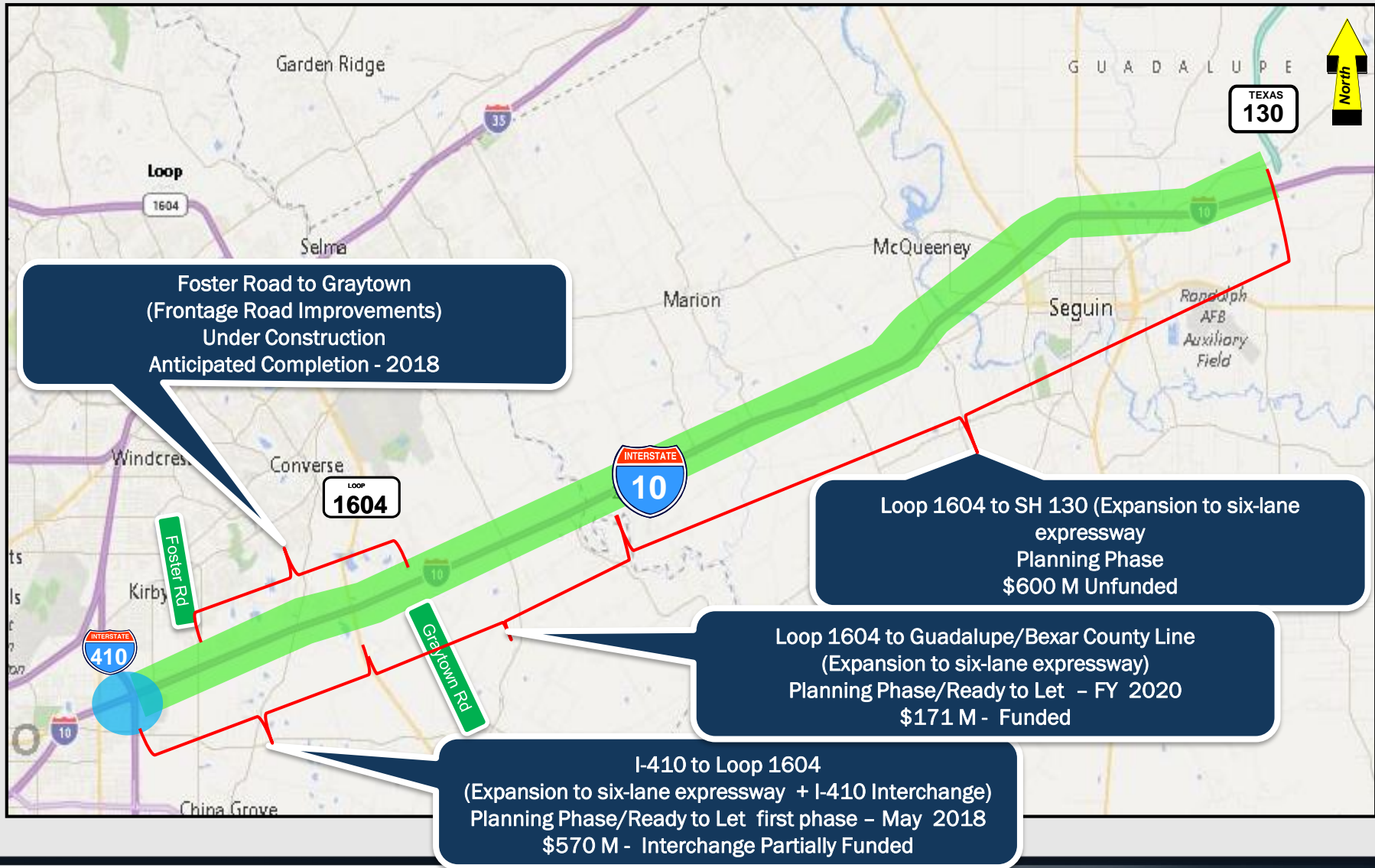
# I-10 East Corridor Plan

- Passing through San Antonio and Houston, the I-10 corridor connects two of the largest and fastest growing metropolitan areas in Texas.
  - A Statewide Corridor Plan to expand I-10 from San Antonio to Houston is under development.
  - The proposed I-10 East project from I-410 to Loop 1604 would compliment this Corridor Plan.





# I-10 East Corridor Plan

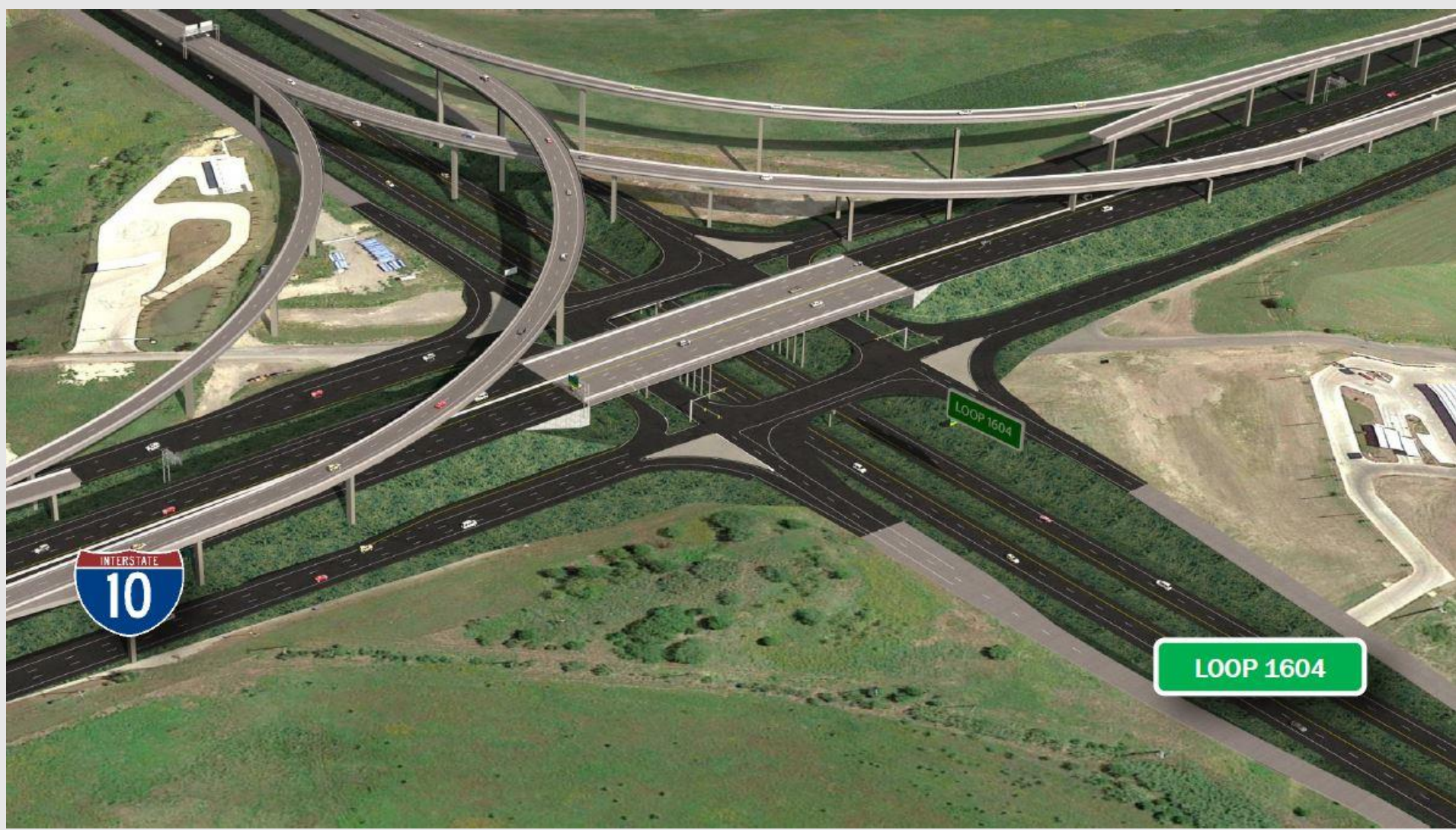


# I-10 @ FM 1516





# I-10 @ LP 1604









# I-35 Operational Improvements

FM 2252 to Comal/Hayes County Line  
Partially Funded

- Scope: ramp revisions, intersection improvements, and conversion from two-way to one-way frontage roads.
- Project limits: From FM 2252 to Comal/Hayes county line
- Anticipated lettings starting: FY 2019

# I-35 Operational Improvements



- Operational Improvements on I-35 including ramp, frontage road, and intersection improvements.
- 3 separate projects:
  - FM 2252 to Schwab Rd
    - Anticipated Letting date: February 2019
    - Estimate: \$25 M
  - 1.2 Miles South of FM 306 to FM 306
    - Anticipated Letting date : April 2019
    - Estimate: \$12 M
  - FM 306 to Hays/Comal County Line
    - Anticipated Letting date : June 2019
    - Estimate: \$63 M

# I-35 Northeast Corridor



I-410 N to I-410 S (Expand to eight-lane expressway + operational improvements)  
Currently under construction  
Substantially complete

I-410 S to FM 1103  
(Add express lanes + interchange improvements at I-410 N, I-410 S, & Loop 1604 N)  
Secured Environmental Clearance  
\$1.5 B Project Cost  
Likely constructed in phases



# I-35 from I-410 N to FM 3009



- *Working on Phasing , Plan of Finance and developing a Design/Build strategy.*

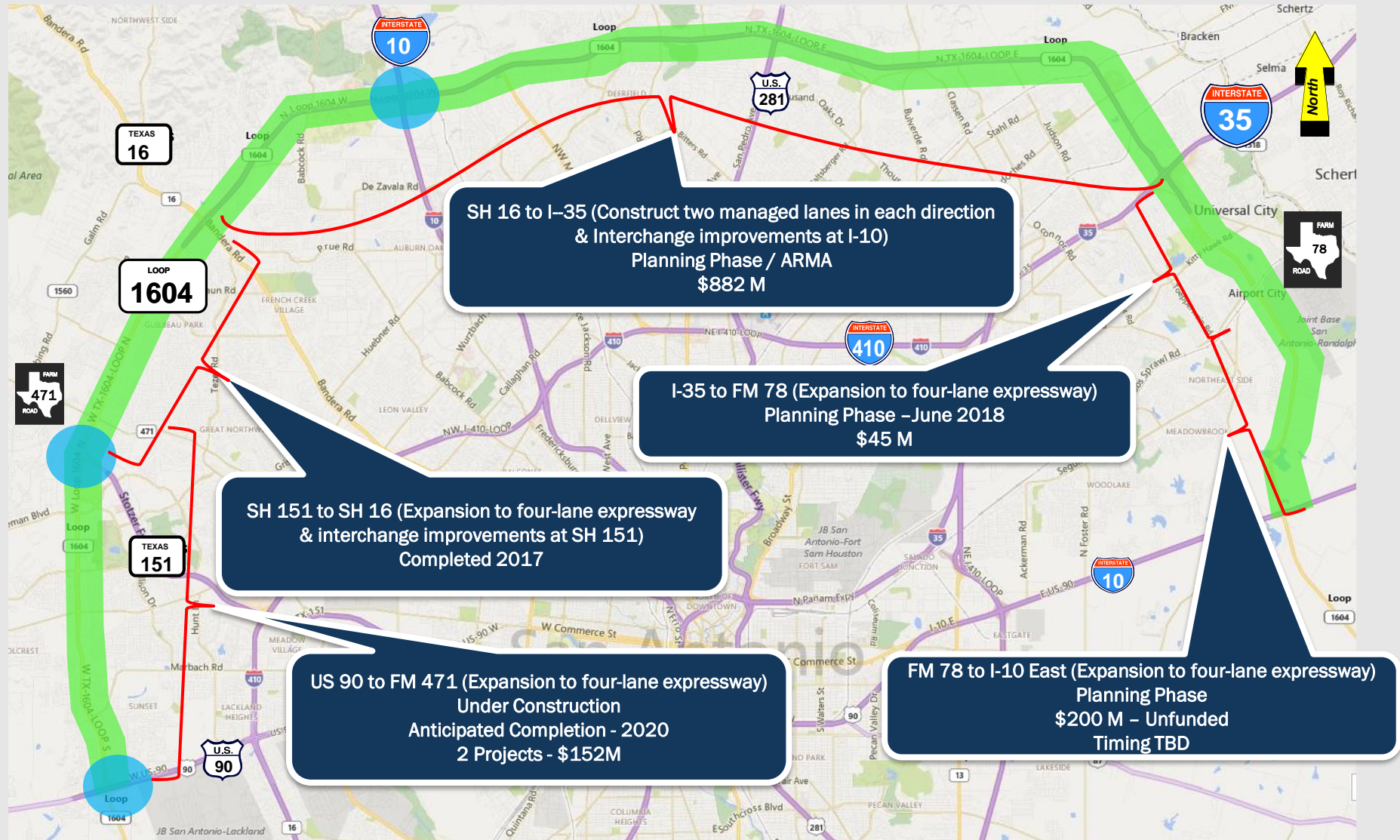
- #47 on Top 100 List
- Expand I-35 from 8 lane to 14 lane expressway
- Add 6 new elevated express lanes including 2 HOV lanes
- Improvements at I-410 N and LP 1604 interchanges
- Construction Estimate: \$720 M
- Design Build Execution: Summer 2020



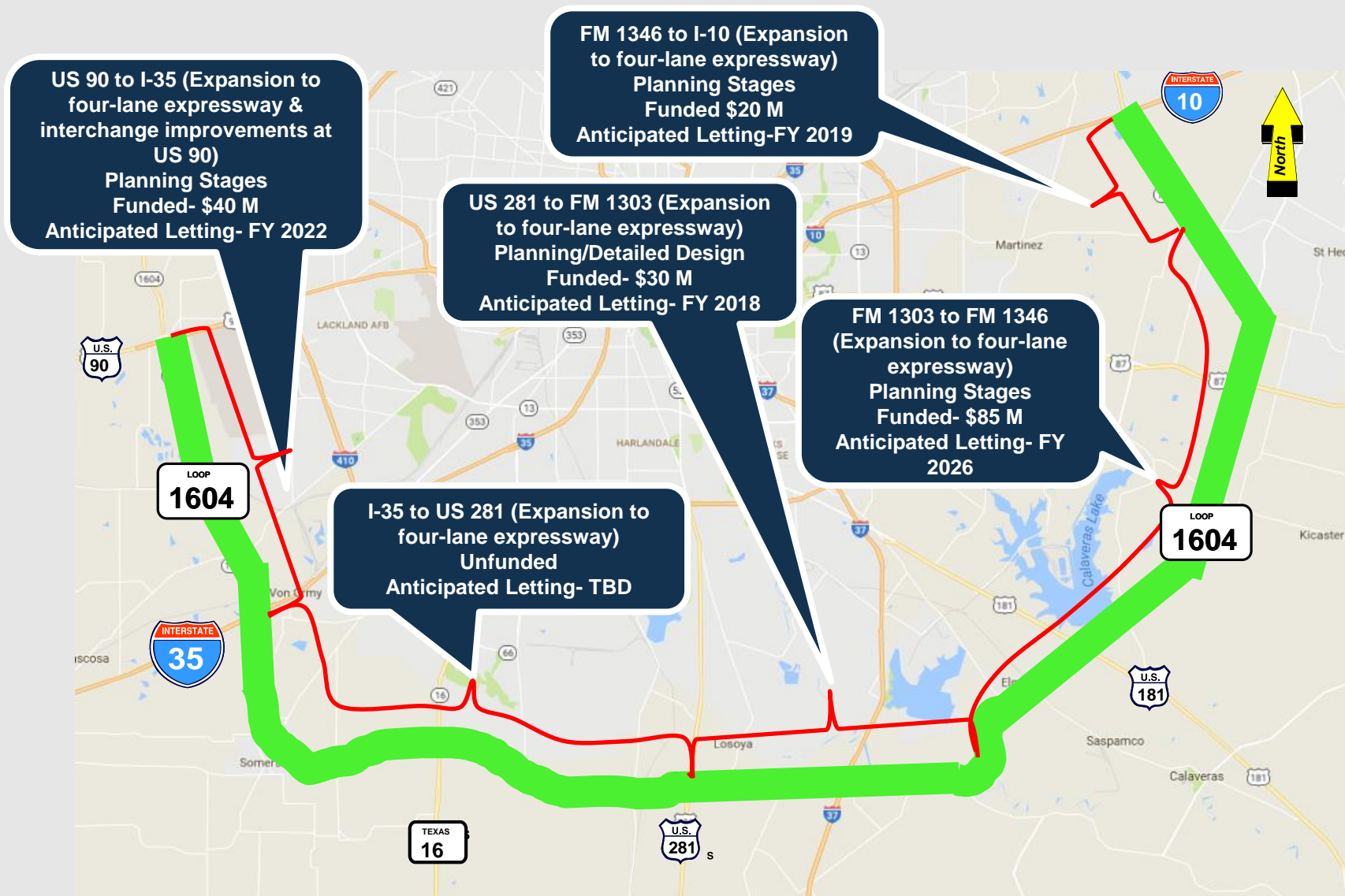
# I-35 plan: Schertz to Downtown



# Loop 1604 north of San Antonio



# Loop 1604 south of San Antonio



# The Discussion

**1** Safety Message

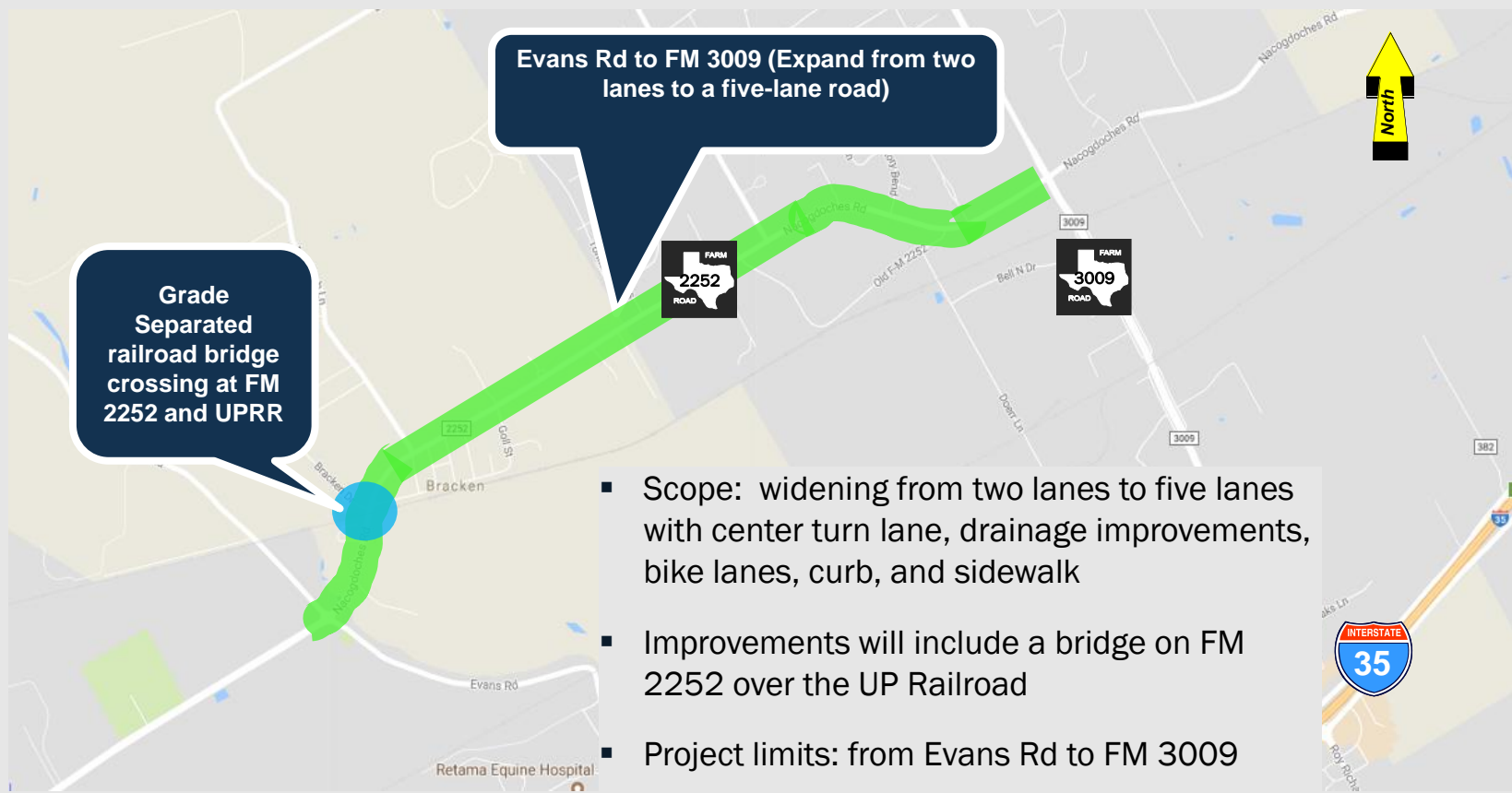
**2** The Big Stuff

**3** Local Highlights

**4**

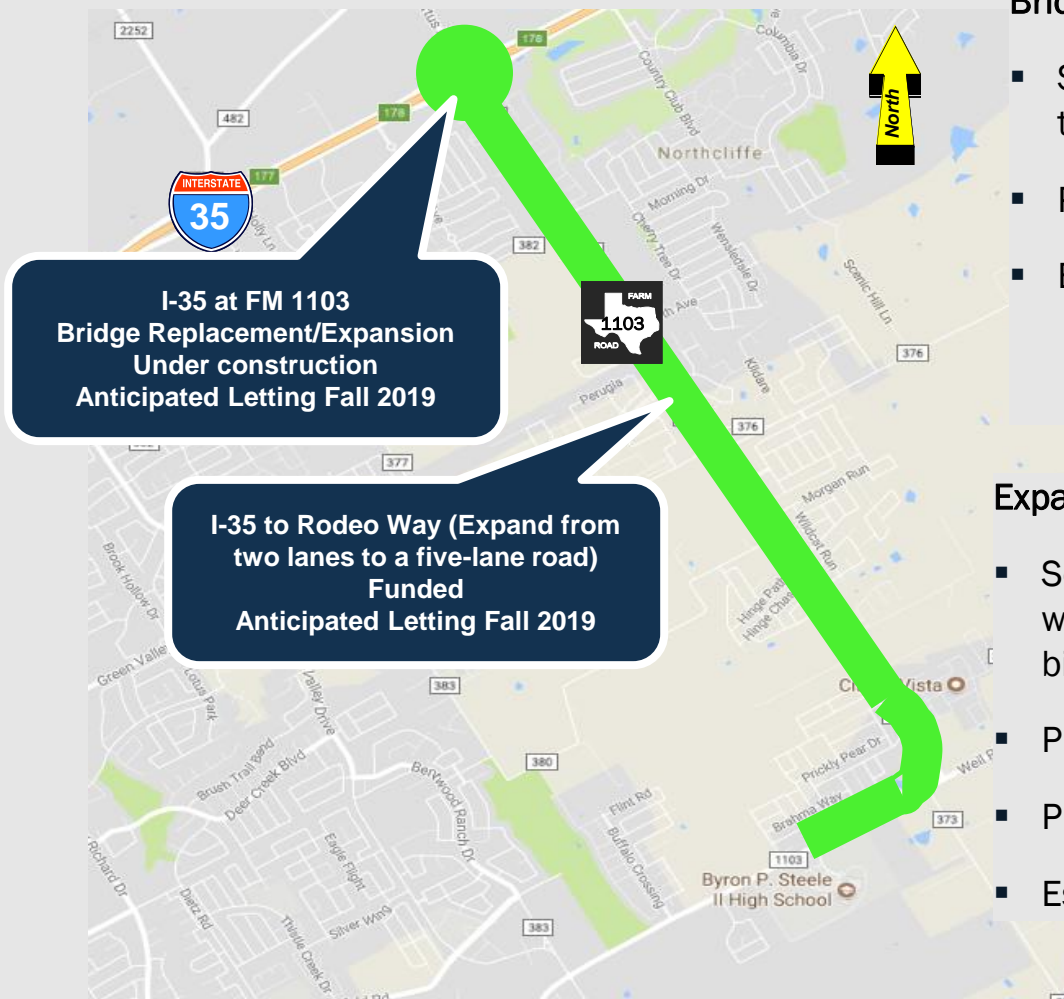


# FM 2252 Expansion



- Scope: widening from two lanes to five lanes with center turn lane, drainage improvements, bike lanes, curb, and sidewalk
- Improvements will include a bridge on FM 2252 over the UP Railroad
- Project limits: from Evans Rd to FM 3009
- Preliminary cost estimate: \$30 M
- Estimate letting date: FY 2021

# FM 1103 Expansion



## Bridge Replacement/Expansion:

- Scope: Replace bridge at I-35/FM 1103 + turnarounds
- Preliminary cost estimate: \$7.3 M
- Estimated completion: Summer 2019

## Expansion:

- Scope: widening from two lanes to five lanes with center turn lane, drainage improvements, bike lanes, curb, and sidewalk
- Project limits: from I-35 to Rodeo Way
- Preliminary cost estimate: \$24 M
- Estimated letting date: Fall 2019

# FM 1103 Expansion



TO Main St/CVD

## Expansion To Main Street/ Cibolo Valley Drive

- Scope: widening from two lanes to five lanes with center turn lane, drainage improvements, bike lanes, curb, and sidewalk
- Preliminary cost estimate: \$13.4 M
  - Roadway Improvements \$11.4M
  - Channel Improvements \$2M

## Possible Project Development Schedule

- Schematic Design and Env – 2yrs (Fall 2020)
- Right of Way Acquisition – 1.5yrs (Spring 2022)
- Utility Adjustments – 1yr (Spring 2023)
- Estimated letting date: Summer 2023

# FM 1518 Expansion



- Scope of ultimate project includes widening from two lanes to four with turn lanes, medians, drainage improvements, shared-used path (bike and pedestrian accommodation)
- Project limits: from FM 78 to I-10
- Preliminary cost estimate: \$45 M
- Estimate letting date: Fall 2022



# The Discussion

**1** Safety Message

**2** The Big Stuff

**3** Local Highlights

**4** Questions

# Stay Connected

- Twitter: @TxDOTSanAntonio
- Blog: <http://txdotsanantonio.blogspot.com>
- Clayton: [clayton.ripps@txdot.gov](mailto:clayton.ripps@txdot.gov) or 210.615.6076
- Will: [will.lockett@txdot.gov](mailto:will.lockett@txdot.gov) or 830.609.0707