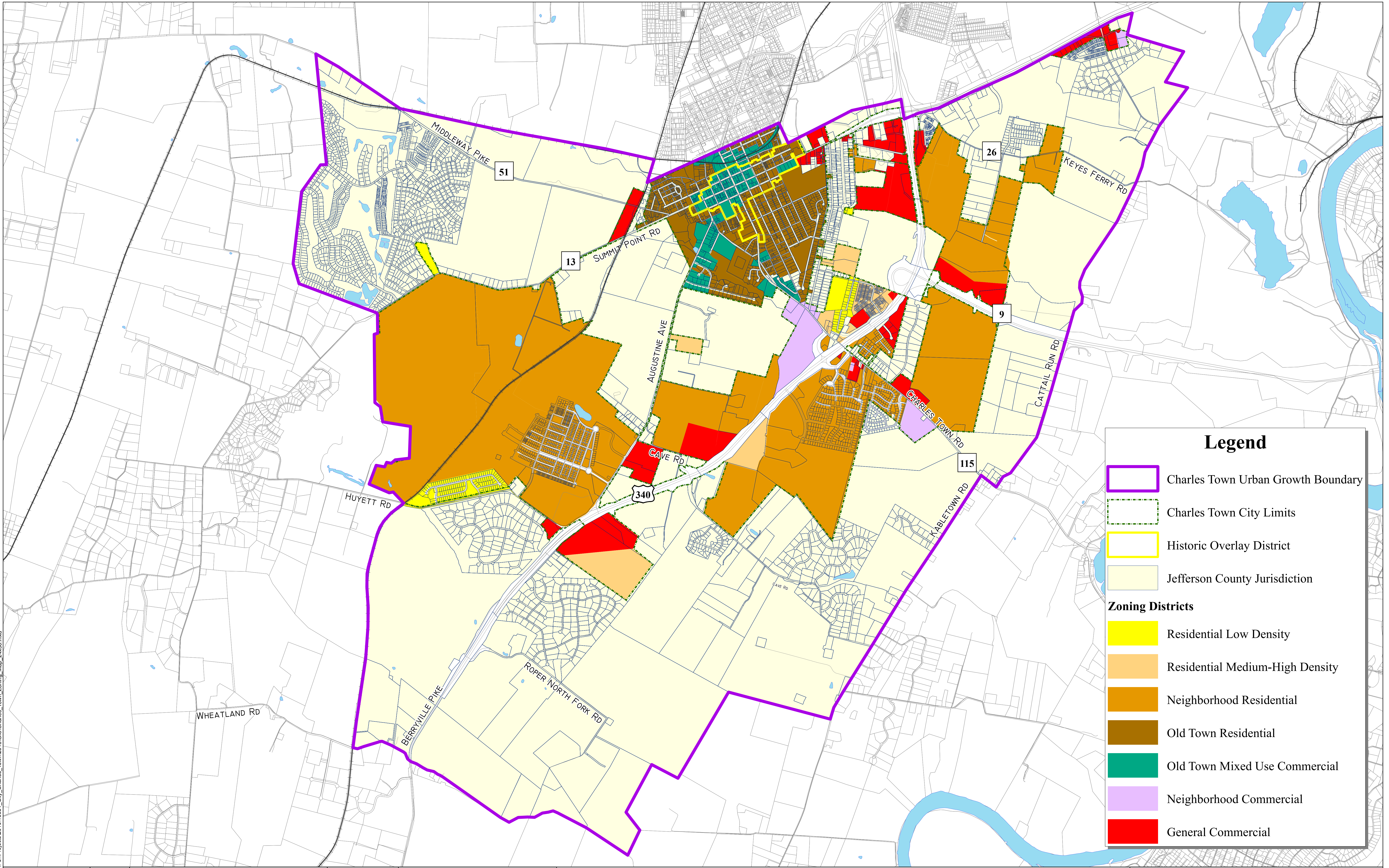


Document Path: U:\Projects\2016\16051\_City\_Charles\_Town\GIS\Charles\_Town\_Zoning\_Map\_24x36.mxd



**Legend**

- Charles Town Urban Growth Boundary
- Charles Town City Limits
- Historic Overlay District
- Jefferson County Jurisdiction
- Zoning Districts**
  - Residential Low Density
  - Residential Medium-High Density
  - Neighborhood Residential
  - Old Town Residential
  - Old Town Mixed Use Commercial
  - Neighborhood Commercial
  - General Commercial



0 0.25 0.5 1 Miles  
1: 16,000

PROJECT No. 16051  
JANUARY 15, 2018  
DESIGNED:  
DRAWN: KMB  
CHECKED: JWC

REVISIONS

CHARLES TOWN ZONING MAP

CITY OF CHARLES TOWN,  
WEST VIRGINIA

