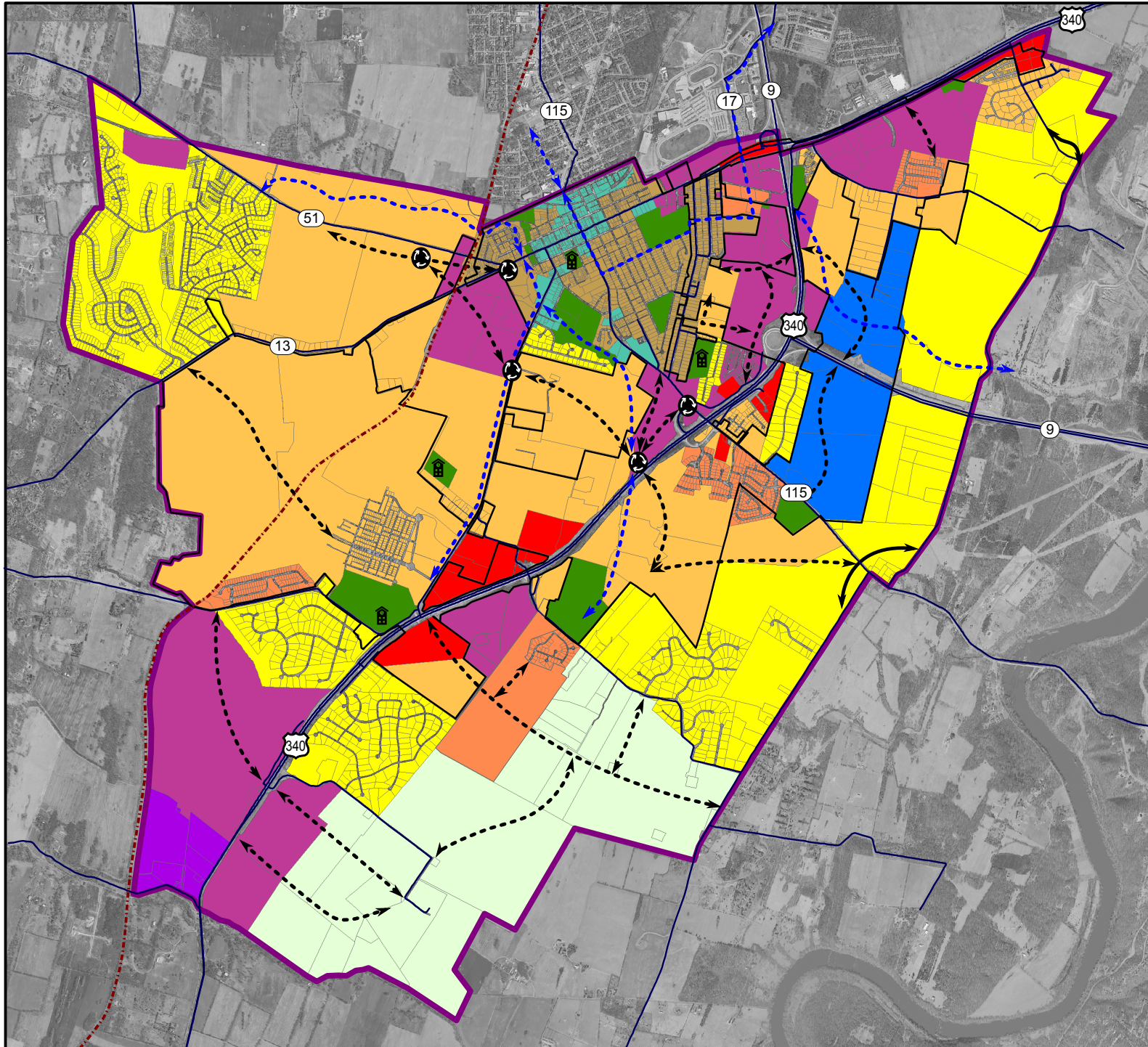




# UGB Future Land Use: 10-Year Growth Scenario



## Future Land Use Classification

- Urban Agriculture - Rural
- Residential Low Density
- Residential Medium High Density
- Old Town Residential
- Mixed Use Residential
- Old Town Mixed Use Commercial
- Mixed Use Commercial
- General Commercial
- Professional Office & Institutional District
- Light Industrial
- Public / Quasi Public Land

## Proposed Transportation Improvement

- New Road
- New Off-Road Trail
- Improvement to Existing Road
- New Roundabout

## Additional Map Elements

- Railroad Track
- Urban Growth Boundary (UGB)
- City Boundary
- Public School

0 0.5 1 2 Miles

Map created by the City of Charles Town Department of Community Development on 5/26/2017

