



THOMAS
MEMORIAL
LIBRARY

STRATEGIC PLAN

JULY 1, 2025 - JUNE 30, 2030



“Libraries are places where people come to know themselves and their communities... People may go to the library looking mainly for information, but they find each other there.”

**–Robert Putnam and Lewis Feldstein,
*Better Together: Restoring the American Community***

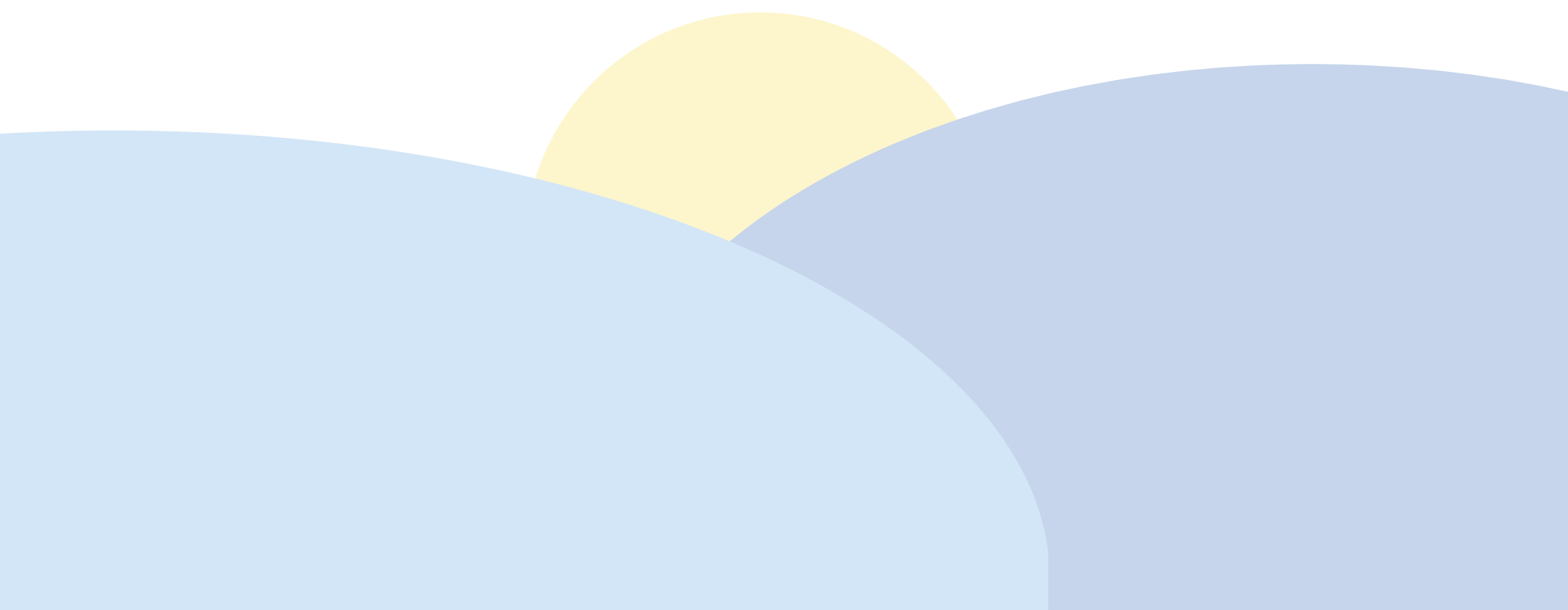
OUR MISSION

The Thomas Memorial Library fosters individual and civic well-being, growth, and vitality by connecting people with information, resources, and one another.

OUR VISION

Within the next five years, Thomas Memorial Library will be recognized as a cornerstone of democracy: a place where everyone in our community feels seen, accepted, supported and valued.

Grounded in a commitment to the common good, we will expand access to resources and programs that strengthen our community by bringing people together around ideas, interests, and opportunities for discovery.



OUR VALUES

Access

We actively strive to remove barriers, create spaces, and offer resources that are accessible, welcoming, safe, and beneficial for all community members regardless of age, background, ability, socioeconomic status, language, culture, or identity.

Intellectual Freedom

We resist censorship, protect privacy, and uphold the right of all individuals to seek, access, and express ideas within a safe and welcoming environment.

Respect

We honor the inherent dignity and diverse perspectives of all library users, staff, and community members.

Creativity

We embrace creative expression and innovative problem-solving in our programming as well as our daily operations. We foster creativity among both patrons and staff. We believe creativity is essential for self-actualization and collaboration, and that it gives humanity the best chance at envisioning and creating a better future.

Sustainability

We make environmentally sound, economically viable, and equitable choices that preserve both physical and digital resources to ensure current and future service accessibility. Supporting climate resiliency allows the library to foster a thriving community, safeguard our shared well-being, and build a better future.

Human Relationships

We recognize the importance of human connection to the health and wellbeing of individuals and societies. We promote a family-centered approach to literacy and learning, expanding that philosophy to provide resources for community members throughout the lifespan.

Social Progress

We advocate for an informed and civically engaged society by encouraging dialogue, partnering with organizations that serve the public good, and embracing advancements in knowledge, technology, and information access that advance the ideals of a healthy American democracy.

OBJECTIVES

"Libraries store the energy that fuels the imagination. They open up windows to the world and inspire us to explore and achieve, and contribute to improving our quality of life."

--Sidney Sheldon





Connect with and welcome community members who may not currently use or feel comfortable in the library.

We are specifically focused on teens, younger adults, and people with disabilities. Possible strategies may include:

- Promoting and expand our existing delivery program for homebound or low mobility patrons.
- Diversifying offerings and exploring creative partnerships to develop programs that appeal to teens and younger adults.
- Curating, offering, and advertising adaptive technologies and tools for library users with disabilities.

Develop programs and curate resources that foster critical literacy skills and empower community members to be well-informed.

We believe literacy encompasses:

- The spoken and written word
- Cultural and historical knowledge
- Music, art, and performance
- Technological and analog communication systems
- Language acquisition
- Media and journalism
- Science and technology

2



Provide opportunities for civic engagement in order to foster a sense of community and social responsibility.

Through partnerships with other Town departments, elected officials, and organizations we hope to encourage understanding and participation in our local government.

We will continue to expand our offerings of resources and programs that seek to connect people with one another and encourage a healthy exchange of ideas and an appreciation of diverse perspectives.

3





Foster creativity, playfulness, and delight through resources and programs that entertain and inspire.

We are excited to promote an appreciation for art, invention, fantasy, and possibility, connecting all ages in our community through creative expression, games, and imaginative play. Some of these efforts include annual seasonal events such as the Fall Fairy Festival and the Winter Lantern Festival, role-playing games such as Murder Mystery parties, and the development of a bookable art studio space equipped with various artistic tools and media.

Promote well-being, health, and safety of the environment, individuals, and groups.

Possible strategies include:

- Increasing awareness of existing partnerships with organizations such as the Cape Elizabeth Fire/Rescue Department, the Cape Elizabeth Recycling Committee, the Cape Elizabeth Land Trust, Finding Our Voices, and Family Place Libraries.
- Creating welcoming sustainable gardens on the library grounds using native shrubs and perennials.
- Expanding our Library of Things Collection to help community members reduce the need to purchase items for one-time or limited use.
- Pursuing opportunities for sustainable practices in day-to-day library operations.

5



THE STRATEGIC PLANNING WORKING GROUP

Consultant

Will Plumley

TML Committee

Tim Blackstone
Reed Dyer

Liz Elliott
Patience Maloney

TML Foundation

Megan Bagdasarian

TML Staff

Rachel Davis, Director
Allyson Frick, Family Engagement Manager
Sasha Kohan, Community Engagement Manager
Sarah Gabrielson, Family Engagement Assistant