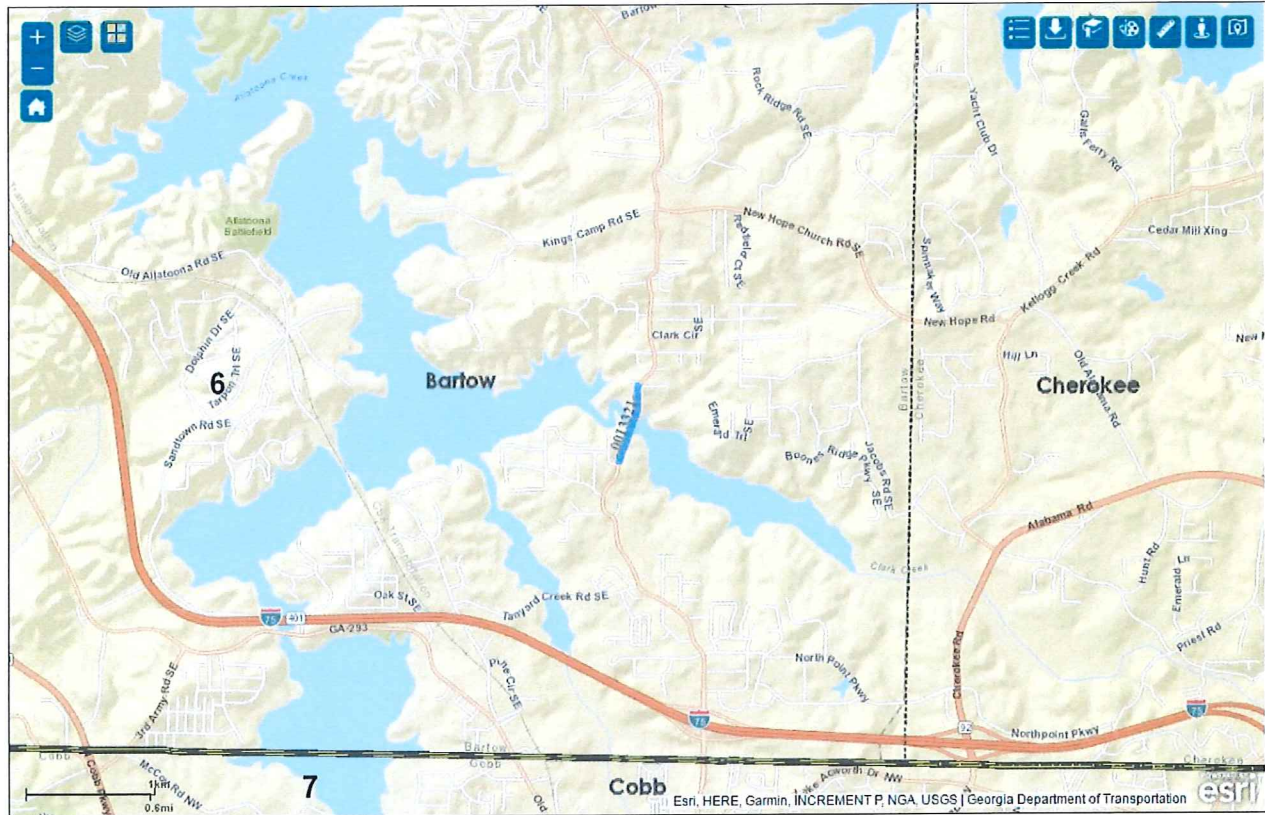


**CARTERSVILLE-BARTOW METROPOLITAN PLANNING ORGANIZATION  
TRANSPORTATION IMPROVEMENT PROGRAM, 2018-2021**

<b>PROJECT NAME: Glade Road/Clark Creek Bridge</b>			<b>PROJECT #:</b>		<b>CB-101</b>	
<b>PROJECT DESCRIPTION:</b> Safety improvements of section of Glade Road from Misty Valley Drive to Brandy Lane including the relocation of the bridge over Clark Creek. Limits included within former PI 0003770.			<b>Estimated Cost:</b>		\$ 10,323,864	
			<b>County:</b>		Bartow	
			<b>P.I. #:</b>		0013321	
			<b>Project Type:</b>		Bridge	
<b>NEED AND PURPOSE:</b> To improve road alignment. Network Year: 2024						
<b>Length:</b>	0.4	<b># of Existing Lanes:</b>	2	<b># of Lanes Planned:</b>	2	
<b>GDOT District:</b>	6	<b>Congressional District:</b>	11	<b>RC: NWG</b>	<b>Sponsor:</b>	Bartow Co
<b>Average Daily Traffic Volume:</b>	2014	2,300				
<b>PROJECT PHASE</b>	<b>SOURCE</b>	<b>2018</b>	<b>2019</b>	<b>2020</b>	<b>2021</b>	<b>TOTAL</b>
<i>Preliminary Engineering (\$)</i>	AUTH-FLAP	2,007,500				\$ 2,007,500
<i>Right-of-Way (\$)</i>	AUTH-FLAP	1,890,000				\$ 1,890,000
<i>Utilities (\$)</i>	FLAP/Local		86,000			\$ 86,000
<i>Construction (\$)</i>	Local		6,340,364			\$ 6,340,364
<b>PROJECT COST:</b>						
<i>Federal Cost (\$):</i>		3,120,000				\$ 3,120,000
<i>State Cost (\$):</i>						\$ -
<i>Local Cost (\$):</i>		777,500	6,426,364			\$ 7,203,864

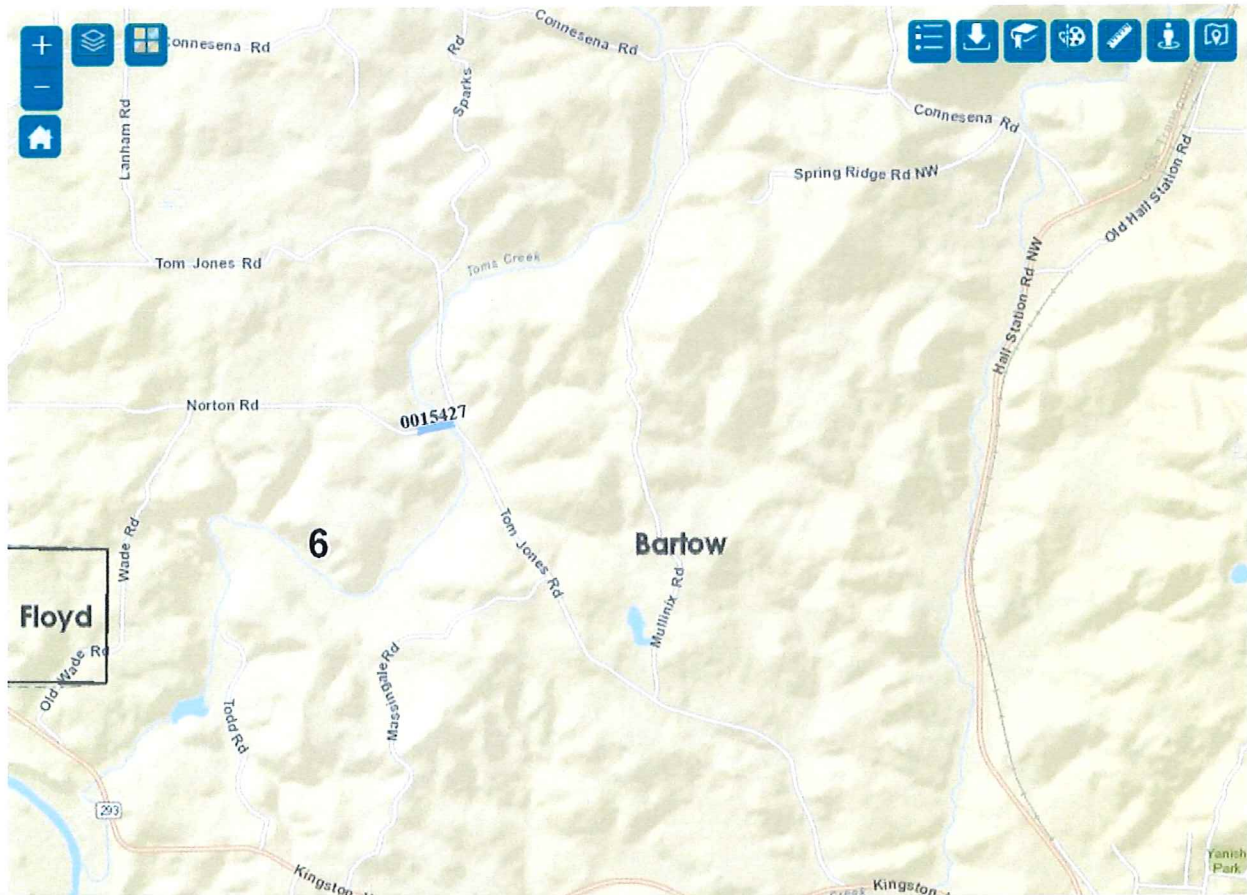
**PROJECT LOCATION MAP**



**CARTERSVILLE-BARTOW METROPOLITAN PLANNING ORGANIZATION  
TRANSPORTATION IMPROVEMENT PROGRAM, 2018-2021**

<b>PROJECT NAME: CR 82/Norton Rd @ Toms Creek</b>		<b>PROJECT #:</b>		<b>CB-103</b>		
<b>PROJECT DESCRIPTION:</b> The project will replace the existing bridge under the Low Impact Bridge Program. Rights-of-way are not anticipated. Project funded under Lump Sum Bridge allocation.		<i>Estimated Cost:</i>		\$ 1,550,000		
		<i>County:</i>		Bartow		
		<i>P.I. #:</i>		<b>15427</b>		
		<i>Project Type:</i>		Bridge		
<b>NEED AND PURPOSE:</b> The project will improve the safety of the creek crossing.						
<i>Length:</i>	0.2	<i># of Existing Lanes:</i>	2	<i># of Lanes Planned:</i>	2	
<i>GDOT District:</i>	6	<i>Congressional District</i>	11	<i>RC: NWG</i>	<i>Sponsor:</i>	GDOT
<i>Average Daily Traffic Volume:</i>	2015	100				
<b>PROJECT PHASE</b>	<b>SOURCE</b>	<b>2018</b>	<b>2019</b>	<b>2020</b>	<b>2021</b>	<b>TOTAL</b>
<i>Preliminary Engineering (\$)</i>	Z240	AUTH				
<i>Right-of-Way (\$)</i>	Z240					\$ -
<i>Utilities (\$)</i>	Z240					\$ -
<i>Construction (\$)</i>	Z240		1,300,000			\$ 1,300,000
<b>PROJECT COST:</b>						
<i>Federal Cost (\$):</i>			1,040,000			\$ 1,040,000
<i>State Cost (\$):</i>			260,000			\$ 260,000
<i>Local Cost (\$):</i>						\$ -

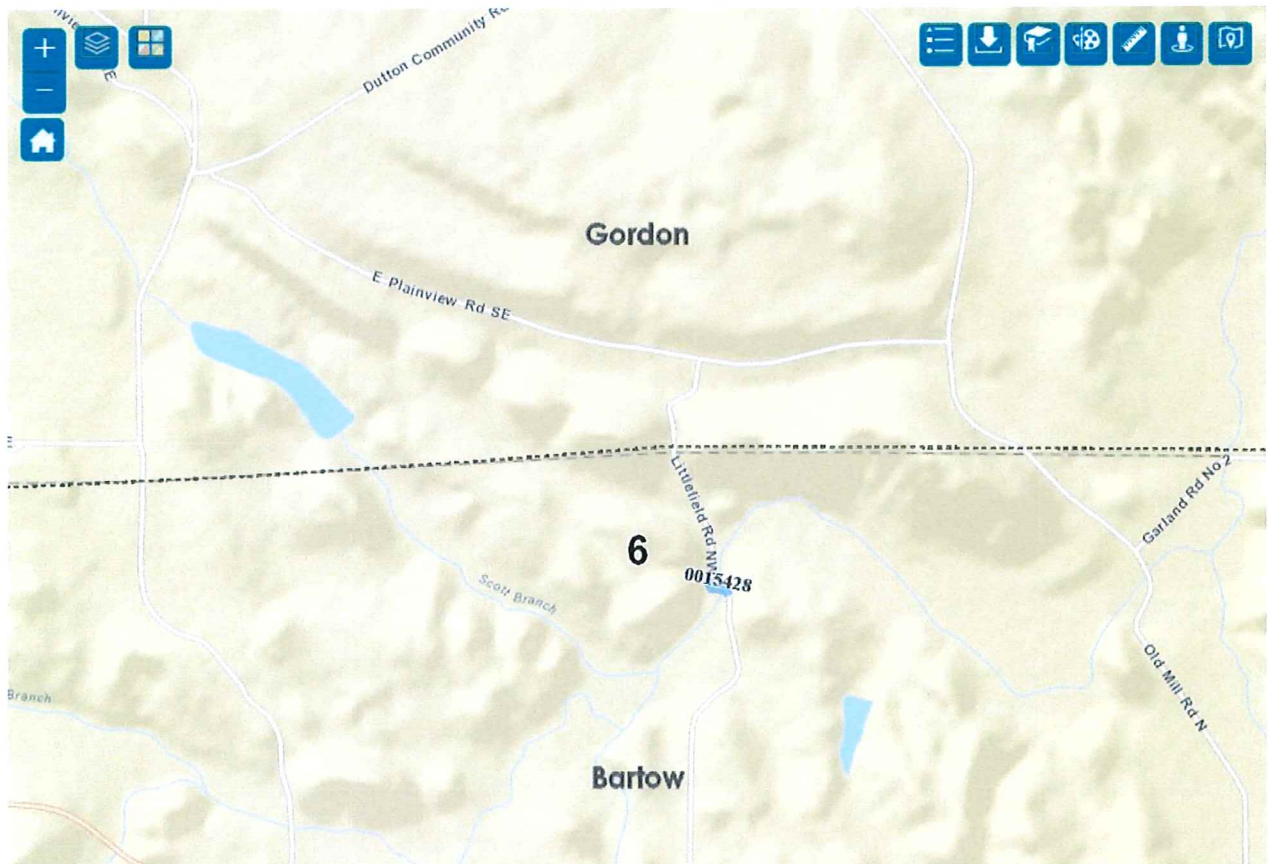
**PROJECT LOCATION MAP**



**CARTERSVILLE-BARTOW METROPOLITAN PLANNING ORGANIZATION  
TRANSPORTATION IMPROVEMENT PROGRAM, 2018-2021**

<b>PROJECT NAME: CR 214/Littlefield Rd @ Cedar Creek</b>		<b>PROJECT #:</b>		<b>CB-104</b>			
<b>PROJECT DESCRIPTION:</b> The project will replace the existing bridge under the Low Impact Bridge Program. Rights-of-way are not anticipated. Project funded under Lump Sum Bridge allocation.		<i>Estimated Cost:</i>		\$ 1,550,000			
		<i>County:</i>		Bartow			
		<i>P.I. #:</i>		<b>15428</b>			
		<i>Project Type:</i>		Bridge			
<b>NEED AND PURPOSE:</b> The project will improve the safety of the creek crossing.							
<i>Length:</i>	0.2	<i># of Existing Lanes:</i>	2	<i># of Lanes Planned:</i>		2	
<i>GDOT District:</i>	6	<i>Congressional District</i>	11	<i>RC: NWG</i>	<i>Sponsor:</i>	GDOT	
<i>Average Daily Traffic Volume:</i>	2015	30					
<b>PROJECT PHASE</b>	<b>SOURCE</b>	<b>2018</b>	<b>2019</b>	<b>2020</b>	<b>2021</b>	<b>TOTAL</b>	
<i>Preliminary Engineering (\$)</i>	Z240	AUTH					
<i>Right-of-Way (\$)</i>	Z240					\$ -	
<i>Utilities (\$)</i>	Z240					\$ -	
<i>Construction (\$)</i>	Z240		1,300,000			\$ 1,300,000	
<b>PROJECT COST:</b>							
<i>Federal Cost (\$):</i>			1,040,000			\$ 1,040,000	
<i>State Cost (\$):</i>			260,000			\$ 260,000	
<i>Local Cost (\$):</i>						\$ -	

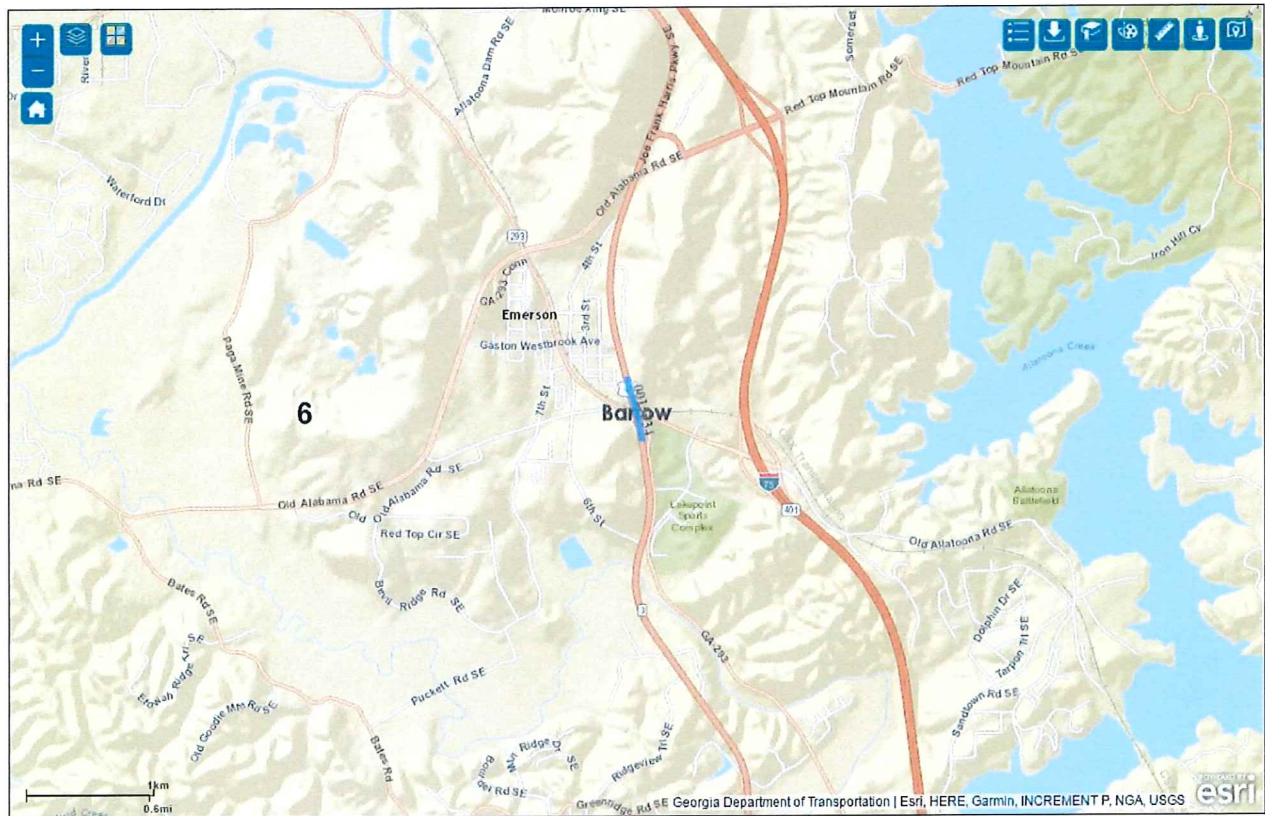
**PROJECT LOCATION MAP**



**CARTERSVILLE-BARTOW METROPOLITAN PLANNING ORGANIZATION  
TRANSPORTATION IMPROVEMENT PROGRAM, 2018-2021**

<b>PROJECT NAME: SR 3/US 41 NB @ SR 293 Bridge</b>		<b>PROJECT #:</b>		<b>CB-108A</b>		
<b>PROJECT DESCRIPTION:</b>		<b>Estimated Cost:</b>		\$ 3,800,000		
		<b>County:</b>		Bartow		
		<b>P.I. #:</b>		15534		
		<b>Project Type:</b>		Bridge		
<b>NEED AND PURPOSE:</b>						
<b>Length:</b>		<b># of Existing Lanes:</b>	2	<b># of Lanes Planned:</b>	2	
<b>GDOT District:</b>	6	<b>Congressional District:</b>	11	<b>RC: NWG</b>	<b>Sponsor:</b>	GDOT
<b>Average Daily Traffic Volume:</b>	2015	210				
<b>PROJECT PHASE</b>	<b>SOURCE</b>	<b>2018</b>	<b>2019</b>	<b>2020</b>	<b>2021</b>	<b>TOTAL</b>
<i>Preliminary Engineering (\$)</i>	Z001	600,000				
<i>Right-of-Way (\$)</i>	Z001			250,000		\$ 250,000
<i>Utilities (\$)</i>	Z001					\$ -
<i>Construction (\$)</i>	Z001					\$ -
<b>PROJECT COST:</b>						
<b>Federal Cost (\$):</b>						\$ -
<b>State Cost (\$):</b>		120,000		50,000		\$ 170,000
<b>Local Cost (\$):</b>		480,000		200,000		\$ 680,000

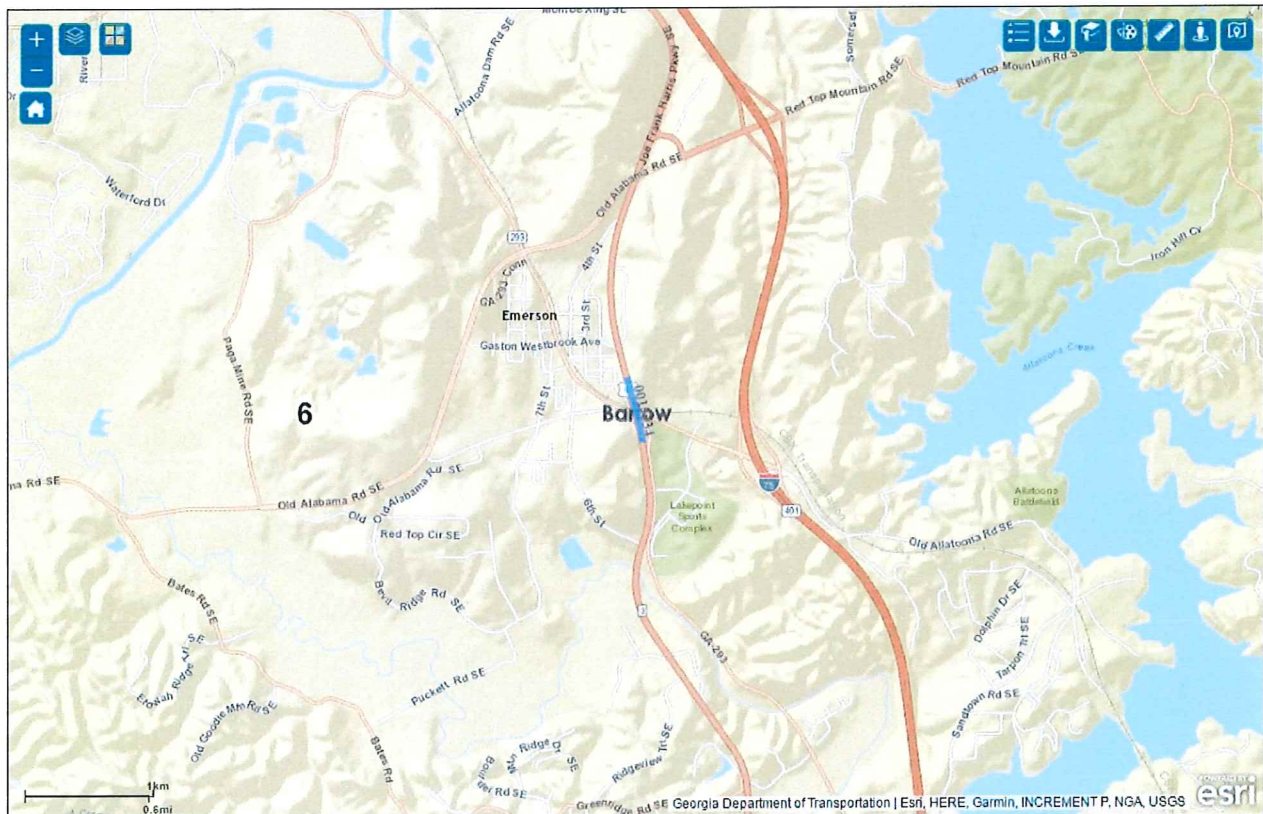
**PROJECT LOCATION MAP**



**CARTERSVILLE-BARTOW METROPOLITAN PLANNING ORGANIZATION  
TRANSPORTATION IMPROVEMENT PROGRAM, 2018-2021**

<b>PROJECT NAME: SR 3/US 41 SB @ SR 293 Bridge</b>		<b>PROJECT #:</b>		<b>CB-108B</b>		
<b>PROJECT DESCRIPTION:</b>		<i>Estimated Cost:</i>		\$ 3,800,000		
		<i>County:</i>		Bartow		
		<i>P.I. #:</i>		<b>15535</b>		
		<i>Project Type:</i>		Bridge		
<b>NEED AND PURPOSE:</b>						
<i>Length:</i>		<i># of Existing Lanes:</i>	2	<i># of Lanes Planned:</i>	2	
<i>GDOT District:</i>	6	<i>Congressional District:</i>	11	<i>RC: NWG</i>	<i>Sponsor:</i>	GDOT
<i>Average Daily Traffic Volume:</i>	2015	2,840				
<b>PROJECT PHASE</b>	<b>SOURCE</b>	<b>2018</b>	<b>2019</b>	<b>2020</b>	<b>2021</b>	<b>TOTAL</b>
<i>Preliminary Engineering (\$)</i>	Z001	600,000				
<i>Right-of-Way (\$)</i>	Z001			250,000		\$ 250,000
<i>Utilities (\$)</i>	Z001					\$ -
<i>Construction (\$)</i>	Z001					\$ -
<b>PROJECT COST:</b>						
<i>Federal Cost (\$):</i>						\$ -
<i>State Cost (\$):</i>		120,000		50,000		\$ 170,000
<i>Local Cost (\$):</i>		480,000		200,000		\$ 680,000

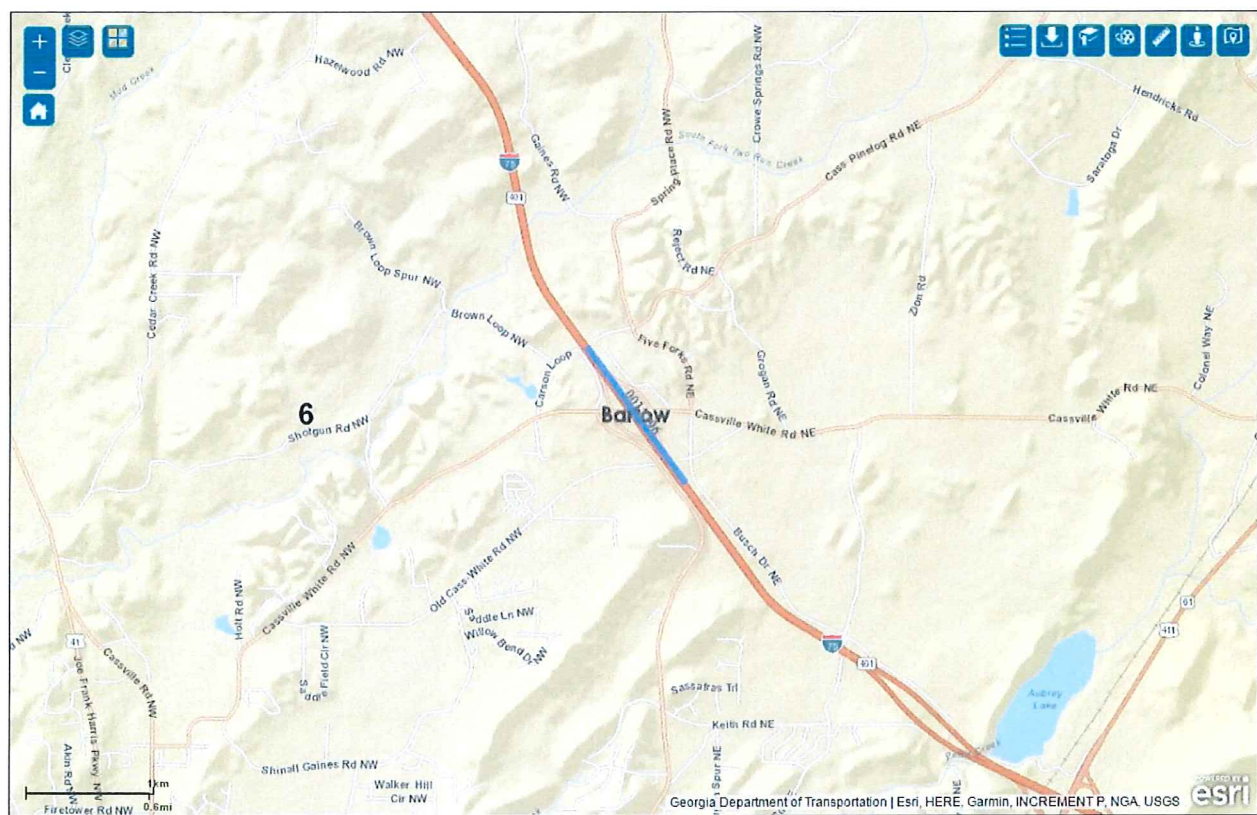
**PROJECT LOCATION MAP**



**CARTERSVILLE-BARTOW METROPOLITAN PLANNING ORGANIZATION  
TRANSPORTATION IMPROVEMENT PROGRAM, 2018-2021**

<b>PROJECT NAME: I-75 @ CR 630/Cass-White Road</b>		<b>PROJECT #:</b>		<b>CB-109</b>			
<b>PROJECT DESCRIPTION:</b> The project consists of minor roadway widening, striping to add east and west bound left turn lanes and an east bound right turn lane, as well as signalization. Rights-of-way are not anticipated.		<b>Estimated Cost:</b>		\$ 300,000			
		<b>County:</b>		Bartow			
		<b>P.I. #:</b>		13296			
		<b>Project Type:</b>		Safety			
<b>NEED AND PURPOSE:</b> The project will improve traffic flows and the safety of left and right turns at the intersection.							
<b>Length:</b>	0.4	<b># of Existing Lanes:</b>	2	<b># of Lanes Planned:</b>		2	
<b>GDOT District:</b>	6	<b>Congressional District:</b>	11	<b>RC:</b> NWG	<b>Sponsor:</b>	GDOT	
<b>Average Daily Traffic Volume:</b>	2015	6,510					
<b>PROJECT PHASE</b>	<b>SOURCE</b>	<b>2018</b>	<b>2019</b>	<b>2020</b>	<b>2021</b>	<b>TOTAL</b>	
<i>Preliminary Engineering (\$)</i>	M210	AUTH					
<i>Right-of-Way (\$)</i>	M210	AUTH				\$ -	
<i>Utilities (\$)</i>	M210	AUTH				\$ -	
<i>Construction (\$)</i>	HB170	300,000				\$ 300,000	
<b>PROJECT COST:</b>							
<i>Federal Cost (\$):</i>						\$ -	
<i>State Cost (\$):</i>		300,000				\$ 300,000	
<i>Local Cost (\$):</i>						\$ -	

**PROJECT LOCATION MAP**



**CARTERSVILLE-BARTOW COUNTY METROPOLITAN PLANNING ORGANIZATION  
TRANSPORTATION IMPROVEMENT PROGRAM, 2018-2021**

**PROJECT NAME:** *Bartow County Transit Department*      **PROJECT #:**      **CB-300**

<b>PROJECT DESCRIPTION:</b> Capital and Operating expenses of the Bartow County Transit system.	<i>Estimated Cost:</i>	
	<i>County:</i>	Bartow
	<i>P.I. #:</i>	
	<i>Project Type:</i>	Transit

**NEED AND PURPOSE:** To operate and maintain current levels of transit service for the CBMPO.

<i>Length:</i>	n/a	<i># of Existing Lanes:</i>	n/a	<i># of Lanes Planned:</i>	n/a
<i>GDOT District:</i>	6	<i>Congressional District:</i>	11	<i>RC: NWG</i>	<i>Sponsor:</i> Bartow

<i>PROJECT PHASE</i>	2018 T006041	2019	2020	2021	TOTAL
<i>FTA Sm Urban 5307 - Operating</i>	\$ 45,238	\$199,313	\$199,313	\$199,313	\$ 643,177
<i>FTA Sm Urban 5307 - Capital</i>	\$ 154,075				\$ 154,075
<i>FTA Lg Urban 5307 - Capital</i>	\$ 32,857	\$ -	\$ -	\$ -	\$ 32,857
<i>FTA 5311</i>	\$ 153,348	\$153,348	\$153,348	\$135,348	\$ 595,392
<i>Transit Alliance</i>	\$ 134,902	\$134,902	\$134,902	\$134,902	\$ 539,608
<b>PROJECT COST:</b>					
<i>Federal Cost (\$):</i>	\$ 429,745	\$357,237	\$357,237	\$342,837	\$ 1,487,056
<i>State Cost (\$):</i>	\$ 34,028	\$ 15,335	\$ 15,335	\$ 13,535	\$ 78,232
<i>Local Cost (\$):</i>	\$ 56,647	\$114,991	\$114,991	\$113,191	\$ 399,821



**CARTERSVILLE-BARTOW COUNTY METROPOLITAN PLANNING ORGANIZATION  
TRANSPORTATION IMPROVEMENT PROGRAM, 2018-2021**

**Bartow Transit Vehicle Inventory**

Make & Model	Number	License	Year	VIN Number	Accessible?
FORD ECONO	739	GV95523	2007	1FMNE11W27DB09140	
CHRYSLER T&C	781	GV5862B	2010	2A4RR5D13AR309914	
Ford E3FY	3783	GV4057C	2017	1FDEEE3FS2HDC35470	Y
FORD 350	3379	GV5220D	2013	1FDEE3FS6DDB31204	Y
FORD E350	3380	GV6725D	2013	1FDEE3FS8DDB31205	Y
FORD E350	3378	GV7954D	2014	1FDEE3FS1EDA23753	
FORD	3479	GV4487E	2015	1FDEE3FS5FDA07217	
FORD E350	3549	GV9954E	2016	1FDEE3FS0GDC03373	
FORD E350	3550	GV9952E	2016	1FDEE3FS7GDC03340	
FORD E350	3551	GV9946E	2016	1FDEE3FS4GDC03375	Y
FORD E350	3552	GV9953E	2016	1FDEE3FS6GDC03345	Y
<b>FORD TRANSIT VAN</b>	<b>967</b>	<b>GV9990E</b>	<b>2016</b>	<b>1FBZX2ZM7GKA56573</b>	<b>Replaces 739.</b>
<b>FORD E350</b>	<b>986</b>	<b>GV7003K</b>	<b>2017</b>	<b>1FDEE3FS7HDC26604</b>	<b>Y</b>

**3783 REPLACED 3281**

**986 NEW BUS FOR ALLATOONA**



**CARTERSVILLE-BARTOW COUNTY METROPOLITAN PLANNING ORGANIZATION  
TRANSPORTATION IMPROVEMENT PROGRAM, 2018-2021**

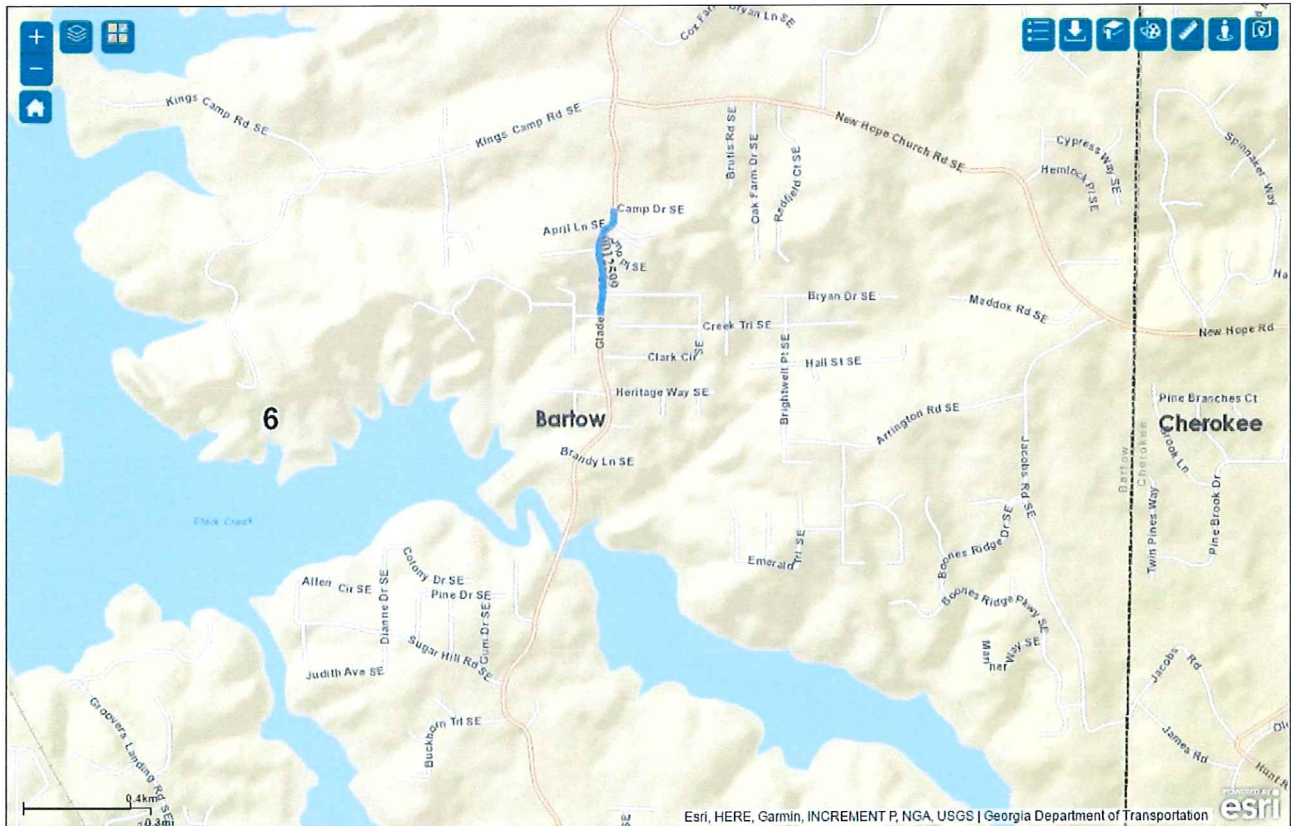
<b>PROJECT NAME:</b> <i>Regional Transit Planning</i>		<b>PROJECT #:</b>		<b>CB-300-5304</b>	
<b>PROJECT DESCRIPTION:</b> Provide assistance to GDOT in collecting data for transit operations in Northwest Georgia Regional Commission Service Area.		<b>Estimated Cost:</b>		\$ 13,676	
		<b>County:</b>		Bartow	
		<b>P.I. #:</b>			
		<b>Project Type:</b>		Study	
<b>NEED AND PURPOSE:</b> <i>Assist GDOT in regional data collection and monitoring of transit activities.</i>					
<b>Length:</b>	n/a	<b># of Existing Lanes:</b>	n/a	<b># of Lanes Planned:</b>	n/a
<b>GDOT District:</b>	6	<b>Congressional District:</b>	11	<b>RC: NWG</b>	<b>Sponsor: NWGRC</b>
<b>PROJECT PHASE</b>	<b>2018 T006057</b>	<b>2019 T006070</b>	<b>2020 T006082</b>	<b>2021 T006093</b>	<b>TOTAL</b>
<i>FTA Lg Urban 5307</i>	\$ -	\$ -	\$ -	\$ -	\$ -
<i>FTA Sm Urban 5307</i>	\$ 3,419	\$ 3,419	\$ 3,419	\$ 3,419	\$ 13,676
<i>FTA 5311</i>					\$ -
<i>Transit Alliance</i>					\$ -
<b>PROJECT COST:</b>					
<i>Federal Cost (\$):</i>	\$ 2,735	\$ 2,735	\$ 2,735	\$ 2,735	\$ 10,940
<i>State Cost (\$):</i>		\$ -	\$ -	\$ -	\$ -
<i>Local Cost (\$):</i>	\$ 684	\$ 684	\$ 684	\$ 684	\$ 2,736



**CARTERSVILLE-BARTOW METROPOLITAN PLANNING ORGANIZATION  
TRANSPORTATION IMPROVEMENT PROGRAM, 2018-2021**

<b>PROJECT NAME: <i>Glade Road realignment</i></b>		<b>PROJECT #:</b>		<b>CB-401</b>		
<b>PROJECT DESCRIPTION:</b> Realign portion of CR 633/Glade Road between Wildflower Trail and Camp Drive. Project limits are within former PI 0003770.		<i>Estimated Cost:</i>		\$ 2,038,836		
		<i>County:</i>		Bartow		
		<i>P.I. #:</i>		12599		
		<i>Project Type:</i>		Reconstruction		
<b>NEED AND PURPOSE:</b> Improve horizontal and vertical alignments of this section of roadway. Network: 2020						
<i>Length:</i>	0.2	<i># of Existing Lanes:</i>	2	<i># of Lanes Planned:</i>	2	
<i>GDOT District:</i>	6	<i>Congressional District:</i>	11	<i>RC: NWG</i>	<i>Sponsor:</i>	Bartow Co
<i>Average Daily Traffic Volume:</i>	2014	4300				
<b>PROJECT PHASE</b>	<b>SOURCE</b>	<b>2018</b>	<b>2019</b>	<b>2020</b>	<b>2021</b>	<b>TOTAL</b>
<i>Preliminary Engineering (\$)</i>	AUTH-Z230					\$ 275,000
<i>Right-of-Way (\$)</i>	AUTH-Z230					\$ 970,000
<i>Utilities (\$)</i>	Z230	125,000				\$ 125,000
<i>Construction (\$)</i>	Z230	1,913,836				\$ 1,913,836
<b>PROJECT COST:</b>						
<i>Federal Cost (\$):</i>		1,540,000				\$ 1,540,000
<i>State Cost (\$):</i>						\$ -
<i>Local Cost (\$):</i>		498,836				\$ 498,836

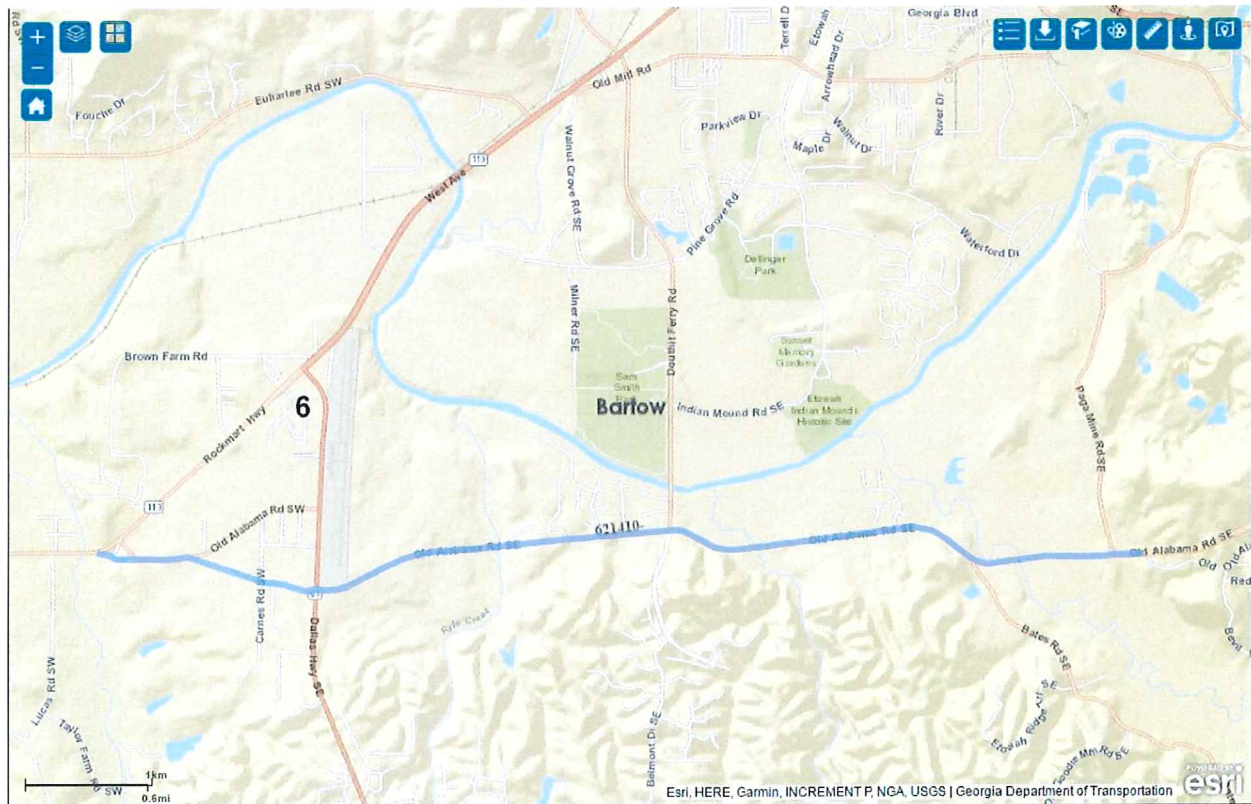
**PROJECT LOCATION MAP**



**CARTERSVILLE-BARTOW METROPOLITAN PLANNING ORGANIZATION  
TRANSPORTATION IMPROVEMENT PROGRAM, 2018-2021**

<b>PROJECT NAME: SR 113/Old Alabama Rd relocation</b>		<b>PROJECT #:</b>		<b>CB-504</b>		
<b>PROJECT DESCRIPTION:</b> Relocation of SR 113 from Pumpkinvine Creek to CR 699		<b>Estimated Cost:</b>		\$ 63,825,903		
		<b>County:</b>		Bartow		
		<b>P.I. #:</b>		621410		
		<b>GDOT Project #</b>				
<b>NEED AND PURPOSE:</b> To improve road alignment for new designated SR 113 route. Network: 2020						
<b>Length:</b>	5.35	<b># of Existing Lanes:</b>	2	<b># of Lanes Planned:</b>	4	
<b>GDOT District:</b>	6	<b>Congressional District:</b>	11	<b>RC: NWG</b>	<b>Sponsor:</b> GDOT	
<b>Average Daily Traffic Volume:</b>	2014	N/A			<b>Z240</b>	
<b>PROJECT PHASE</b>	<b>SOURCE</b>	<b>2018</b>	<b>2019</b>	<b>2020</b>	<b>2021</b>	<b>TOTAL</b>
<i>Preliminary Engineering (\$)</i>	AUTH-Z240					\$ -
<i>Right-of-Way (\$)</i>	AUTH-Z240					\$ -
<i>Utilities (\$)</i>	Z240	2,181,780				\$ 2,181,780
<i>Construction (\$)</i>	Z240	61,644,123				\$ 61,644,123
<b>PROJECT COST:</b>						
<i>Federal Cost (\$):</i>		51,060,722				\$ 51,060,722
<i>State Cost (\$):</i>		12,765,181				\$ 12,765,181
<i>Local Cost (\$):</i>						\$ -

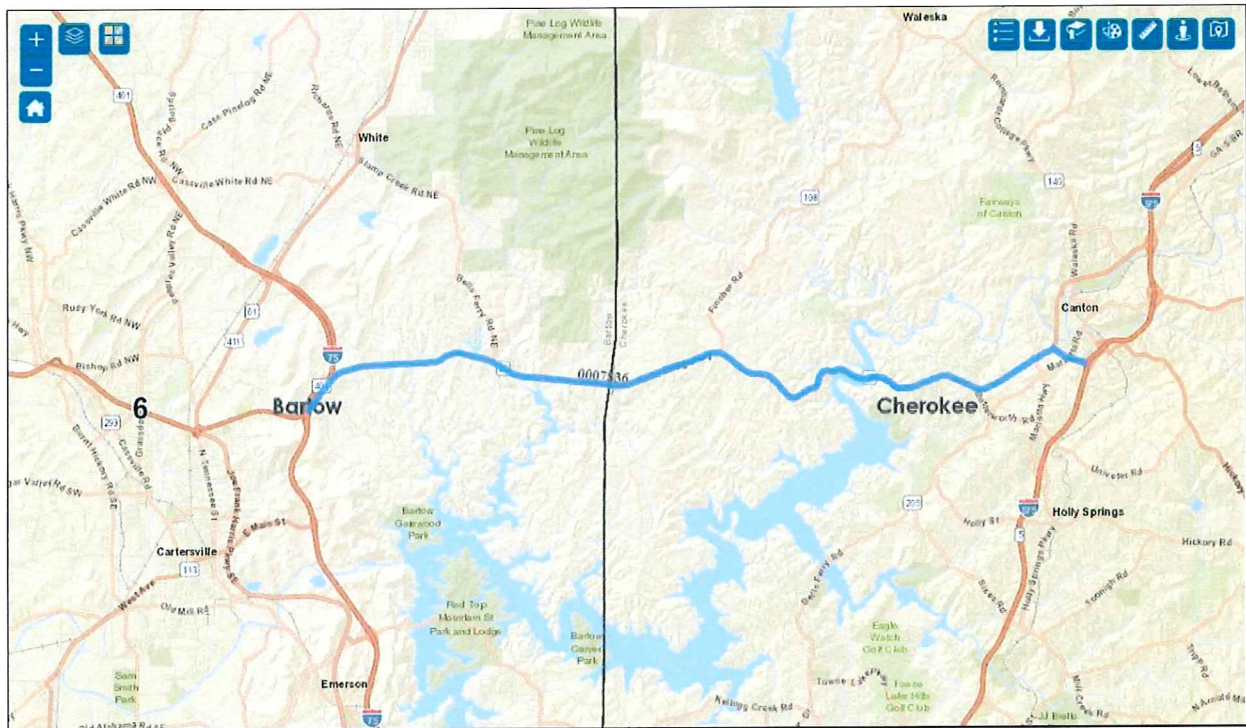
**PROJECT LOCATION MAP**



**CARTERSVILLE-BARTOW COUNTY METROPOLITAN PLANNING ORGANIZATION  
TRANSPORTATION IMPROVEMENT PROGRAM, 2018-2021**

<b>PROJECT NAME: SR 20 (Canton Highway) widening</b>			<b>PROJECT #:</b>		<b>CB-507</b>	
<b>PROJECT DESCRIPTION:</b> Widen to four lanes from I-75 in Bartow County to the Cherokee County line (and beyond to I-575). Figures shown reflect portion of project within Bartow County (35%)			<i>Estimated Cost:</i>		\$78,389,140	
			<i>County:</i>		Bartow	
			<i>P.I. #:</i>		7836	
			<i>Project Type:</i>		Widening	
<b>NEED AND PURPOSE:</b> Improve east-west access through northern tier of Atlanta metro counties.						
<i>Length:</i>	17.1	<i># of Existing Lanes:</i>	2	<i># of Lanes Planned:</i>	4	
<i>GDOT District:</i>	6	<i>Congressional District:</i>	11	<i>RC: NWG</i>	<i>Sponsor:</i>	GDOT
<i>Average Daily Traffic Volume:</i>	2014	14800				
<b>PROJECT PHASE</b>	<b>SOURCE</b>	<b>2018</b>	<b>2019</b>	<b>2020</b>	<b>2021</b>	<b>TOTAL</b>
<i>Preliminary Engineering (\$) - AUTH</i>	HB170	2,188,175				\$ 2,188,175
<i>Right-of-Way (\$)</i>	Z001					\$ -
<i>Utilities (\$)</i>	Z001					\$ -
<i>Construction (\$)</i>	Z001					\$ -
<b>PROJECT COST:</b>						
<i>Federal Cost (\$):</i>						\$ -
<i>State Cost (\$):</i>		2,188,175				\$ 2,188,175
<i>Local Cost (\$):</i>						\$ -

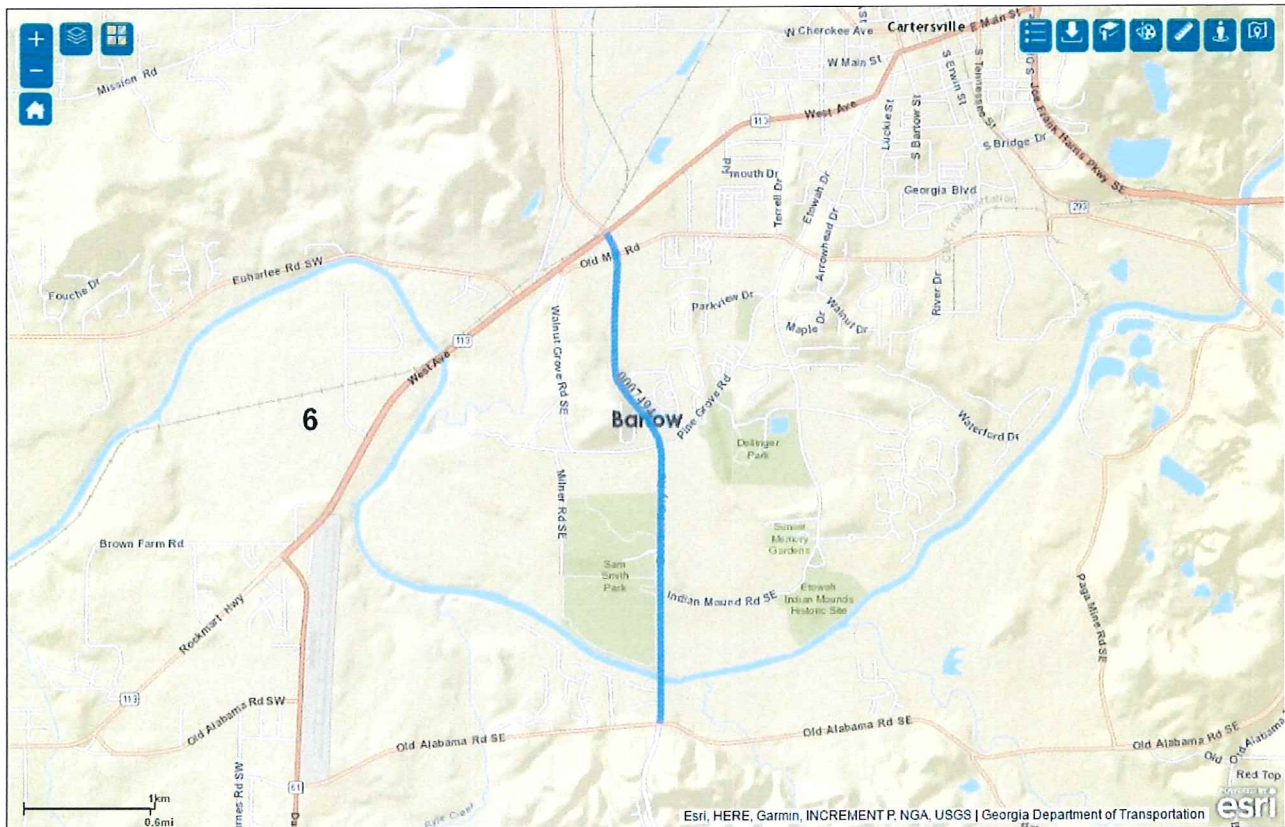
**PROJECT LOCATION MAP**



**CARTERSVILLE-BARTOW METROPOLITAN PLANNING ORGANIZATION  
TRANSPORTATION IMPROVEMENT PROGRAM, 2018-2021**

<b>PROJECT NAME: Douthit Ferry Road widening</b>			<b>PROJECT #:</b>		<b>CB-508</b>	
<b>PROJECT DESCRIPTION:</b> Widen Douthit Ferry Road from Old Alabama Road to SR 113 including the bridge over the Etowah River			<b>Estimated Cost:</b>		\$22,320,283	
			<b>County:</b>		Bartow	
			<b>P.I. #:</b>		7494	
			<b>Project Type:</b>		Widening	
<b>NEED AND PURPOSE:</b> Provide connection to SR 113 bypass corridor from downtown Cartersville. 2030						
<b>Length:</b>	2.5	<b># of Existing Lanes:</b>	2	<b># of Lanes Planned:</b>	4	
<b>GDOT District:</b>	6	<b>Congressional District:</b>	11	<b>RC: NWG</b>	<b>Sponsor:</b>	Cartersville
<b>Average Daily Traffic Volume:</b>	2014	N/A				
<b>PROJECT PHASE</b>	<b>SOURCE</b>	<b>2018</b>	<b>2019</b>	<b>2020</b>	<b>2021</b>	<b>TOTAL</b>
<i>Preliminary Engineering (\$)</i>	AUTH-Z231					\$ -
<i>Right-of-Way (\$)</i>	LOCAL	4,293,731				\$ 4,293,731
<i>Utilities (\$)</i>	LOCAL					\$ -
<i>Construction (\$)</i>	Z231					\$ -
<b>PROJECT COST:</b>						
<i>Federal Cost (\$):</i>						\$ -
<i>State Cost (\$):</i>						\$ -
<i>Local Cost (\$):</i>		4,293,731				\$ 4,293,731

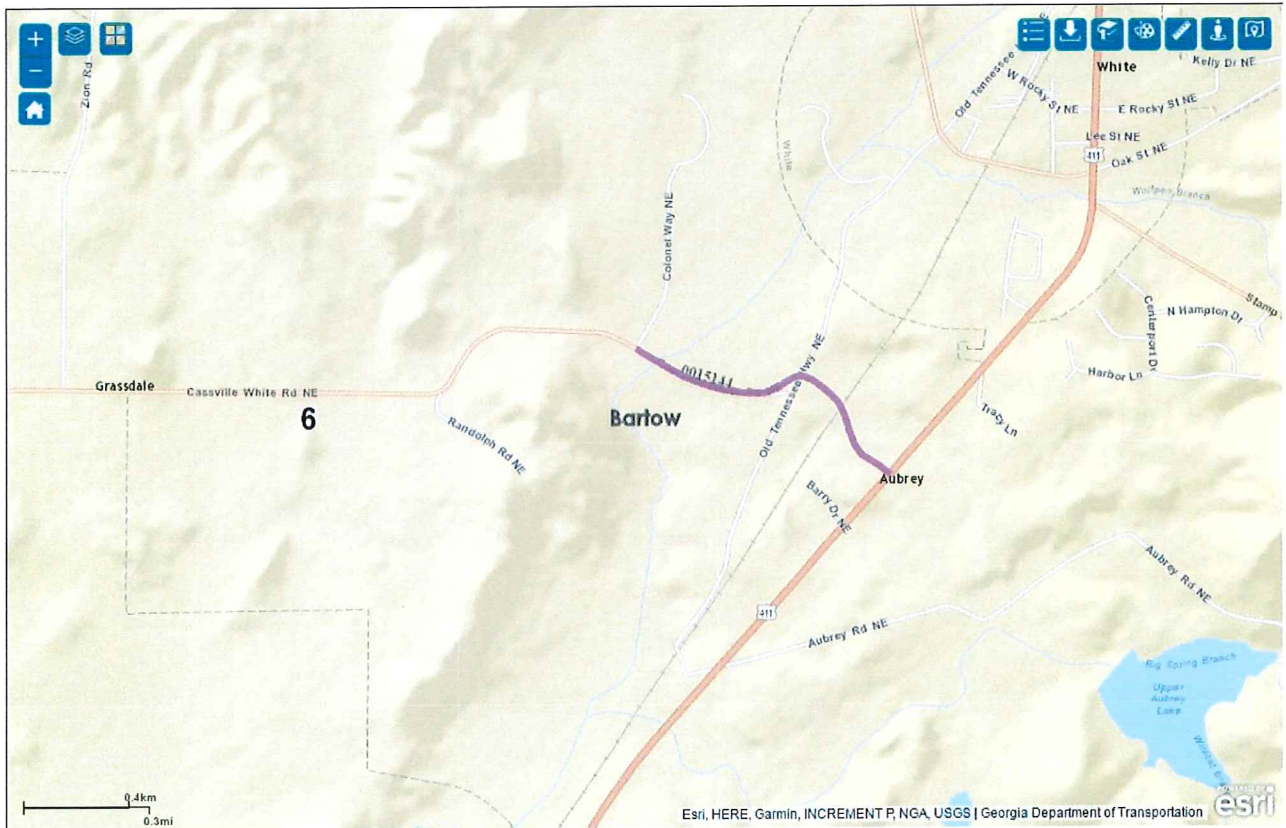
**PROJECT LOCATION MAP**



**CARTERSVILLE-BARTOW COUNTY METROPOLITAN PLANNING ORGANIZATION  
TRANSPORTATION IMPROVEMENT PROGRAM, 2018-2021**

<b>PROJECT NAME: Cass-White Road Ph I widening</b>			<b>PROJECT #:</b>		<b>CB-510A</b>		
<b>PROJECT DESCRIPTION:</b> Widen Cass-White Road between Colonel Way and US 411 to standard-width 2-lane roadway with construction of railroad overpass and relocation of intersection with US 411			<i>Estimated Cost:</i>		\$6,200,000		
			<i>County:</i>		Bartow		
			<i>P.I. #:</i>		15144		
			<i>GDOT Project #</i>				
<b>NEED AND PURPOSE:</b> To improve road alignment and improve safety.							
<i>Length:</i>	0.7	<i># of Existing Lanes:</i>	2	<i># of Lanes Planned:</i>		2	
<i>GDOT District:</i>	6	<i>Congressional District:</i>	11	<i>RC:</i> NWG	<i>Sponsor:</i>	Bartow Co	
<i>Average Daily Traffic Volume:</i>		2014	2180				<b>LOCAL</b>
<b>PROJECT PHASE</b>	<b>SOURCE</b>	<b>2018</b>	<b>2019</b>	<b>2020</b>	<b>2021</b>	<b>TOTAL</b>	
<i>Preliminary Engineering (\$)</i>	AUTH-Local					\$ -	
<i>Right-of-Way (\$)</i>	LOCAL					\$ -	
<i>Utilities (\$)</i>	LOCAL					\$ -	
<i>Construction (\$)</i>	LMIG/Local	6,200,000				\$ 6,200,000	
<b>PROJECT COST:</b>							
<i>Federal Cost (\$):</i>						\$ -	
<i>State Cost (\$):</i>		150,000				\$ 150,000	
<i>Local Cost (\$):</i>		6,050,000				\$ 6,050,000	

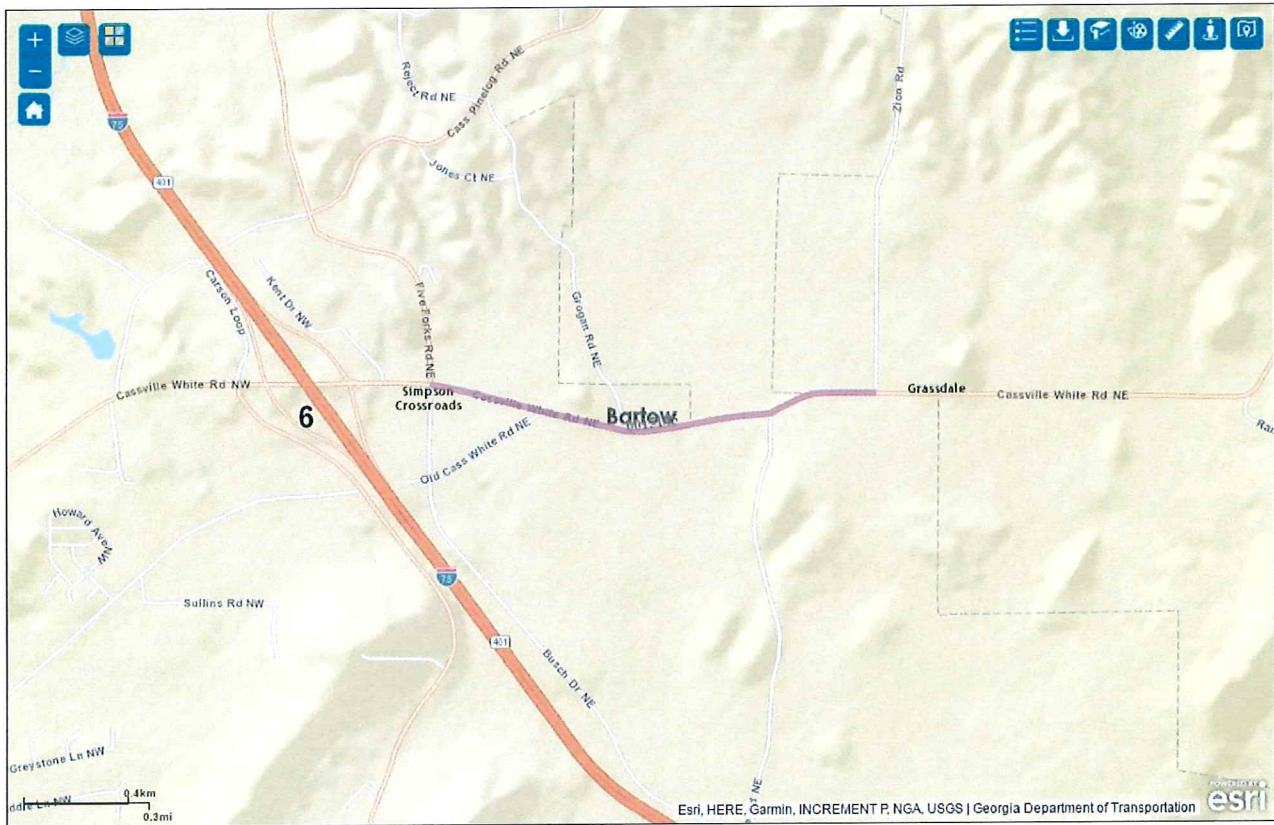
**PROJECT LOCATION MAP**



**CARTERSVILLE-BARTOW COUNTY METROPOLITAN PLANNING ORGANIZATION  
TRANSPORTATION IMPROVEMENT PROGRAM, 2018-2021**

<b>PROJECT NAME:</b> <i>Cass-White Ph II widening</i>		<b>PROJECT #:</b>		<b>CB-510B</b>		
<b>PROJECT DESCRIPTION:</b> Improve Cass-White Road from 2- to 4-lanes urban section with divided median between Busch Drive and 250' east of Great Valley Parkway/Highland 75 Industrial Park.		<b>Estimated Cost:</b>		\$ 14,545,127		
		<b>County:</b>		Bartow		
		<b>P.I. #:</b>		15145		
		<b>GDOT Project #</b>				
<b>NEED AND PURPOSE:</b> To improve safety and handle addition of 1,000 employees and 270 freight trips as this corridor develops into industrial center for the community.						
<b>Length:</b>	1.3	<b># of Existing Lanes:</b>	2	<b># of Lanes Planned:</b>	2	
<b>GDOT District:</b>	6	<b>Congressional District:</b>	11	<b>RC:</b> NWG	<b>Sponsor:</b>	Bartow Co
<b>Average Daily Traffic Volume:</b>		<b>2014</b>	2180			
<b>PROJECT PHASE</b>	<b>SOURCE</b>	<b>2018</b>	<b>2019</b>	<b>2020</b>	<b>2021</b>	<b>TOTAL</b>
<i>Preliminary Engineering (\$)</i>	AUTH-Local					\$ 873,127
<i>Right-of-Way (\$)</i>	LOCAL		1,921,000			\$ 1,921,000
<i>Utilities (\$)</i>	LOCAL			900,000		\$ 900,000
<i>Construction (\$)</i>	LOCAL				10,860,000	\$ 10,860,000
<b>PROJECT COST:</b>						
<b>Federal Cost (\$):</b>						\$ -
<b>State Cost (\$):</b>						\$ -
<b>Local Cost (\$):</b>			1,921,000	900,000	10,860,000	\$ 13,681,000

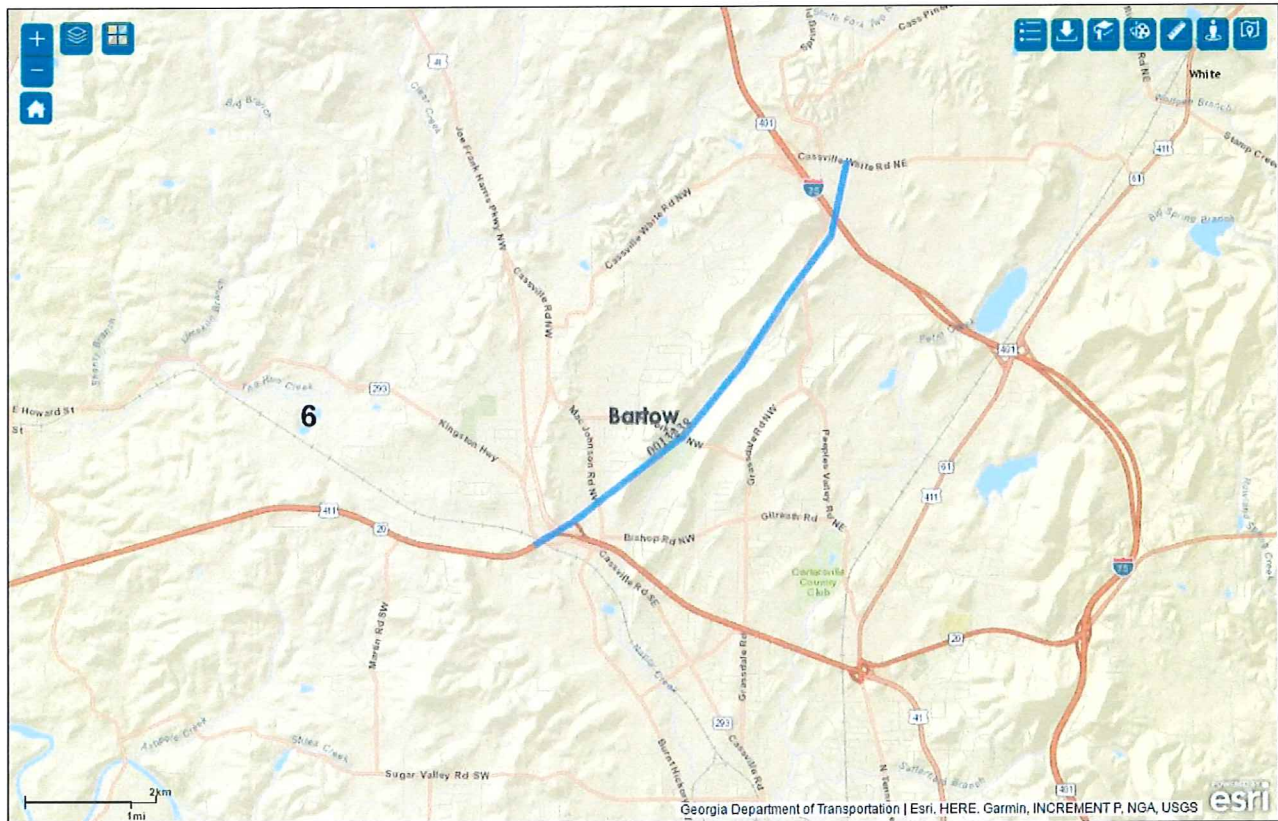
**PROJECT LOCATION MAP**



**CARTERSVILLE-BARTOW COUNTY METROPOLITAN PLANNING ORGANIZATION  
TRANSPORTATION IMPROVEMENT PROGRAM, 2018-2021**

<b>PROJECT NAME:</b> Rome-Cartersville Development Corridor		<b>PROJECT #:</b>		<b>CB-512</b>		
<b>PROJECT DESCRIPTION:</b> On new alignment connect US 411 to I-75 from its intersection at MacJohnson Road and US 41.		<b>Estimated Cost:</b>		\$ 98,468,279		
		<b>County:</b>		Bartow		
		<b>P.I. #:</b>		13238		
		<b>GDOT Project #</b>				
<b>NEED AND PURPOSE:</b> Provide connection to 1-75 for Memphis-Atlanta corridor and for economic development.						
<b>Length:</b>	7.31	<b># of Existing Lanes:</b>	0	<b># of Lanes Planned:</b>		4
<b>GDOT District:</b>	6	<b>Congressional District:</b>	11	<b>RC:</b> NWG	<b>Sponsor:</b>	GDOT
<b>Average Daily Traffic Volume:</b>	2014	N/A				<b>Z240</b>
<b>PROJECT PHASE</b>	<b>SOURCE</b>	<b>2018</b>	<b>2019</b>	<b>2020</b>	<b>2021</b>	<b>TOTAL</b>
<i>Preliminary Engineering (\$)</i>	Z240	2,000,000				\$ 2,000,000
<i>Right-of-Way (\$)</i>						\$ -
<i>Utilities (\$)</i>						\$ -
<i>Construction (\$)</i>						\$ -
<b>PROJECT COST:</b>						
<i>Federal Cost (\$):</i>		1,600,000				\$ 1,600,000
<i>State Cost (\$):</i>		400,000				\$ 400,000
<i>Local Cost (\$):</i>						\$ -

**PROJECT LOCATION MAP**



**CARTERSVILLE-BARTOW METROPOLITAN PLANNING ORGANIZATION  
TRANSPORTATION IMPROVEMENT PROGRAM, 2016-2019**

<b>PROJECT NAME:</b> <i>Glade Road Corridor Safety Impr.</i>		<b>PROJECT #:</b>		<b>CB-609</b>		
<b>PROJECT DESCRIPTION:</b> Glade Road (CR 633) safety improvements from Homestead Drive (CR 605)/Apache Drive (CR 377) to Ryan Road (CR 810)/Yacht Club Road (CR 386), formerly GDOT P.I. No. 0003770.		<b>Estimated Cost:</b>		\$ 14,550,000		
		<b>County:</b>		Bartow		
		<b>P.I. #:</b>				
		<b>Project Type:</b>		Safety		
<b>NEED AND PURPOSE:</b> Improve vertical and horizontal alignment in order to reduce crash frequency and severity. The project incorporates, and includes the limits of, PI# 12599 and PI# 13321. Network Year: 2035						
<b>Length:</b>	3.7	<b># of Existing Lanes:</b>	2	<b># of Lanes Planned:</b>		2
<b>GDOT District:</b>	6	<b>Congressional District</b>	11	<b>RC:</b>		NWGRC
<b>Average Daily Traffic Volume:</b>	2014	4,300				
<b>PROJECT PHASE</b>	<b>SOURCE</b>	<b>2016</b>	<b>2017</b>	<b>2018</b>	<b>2019</b>	<b>TOTAL</b>
<i>Preliminary Engineering (\$)</i>	M210	AUTH	40,000	40,000	40,000	\$ 160,000
<i>Right-of-Way (\$)</i>	M210					\$ -
<i>Utilities (\$)</i>	M210					\$ -
<i>Construction (\$)</i>	LOCAL					\$ -
<b>PROJECT COST:</b>						
<i>Federal Cost (\$):</i>						\$ -
<i>State Cost (\$):</i>						\$ -
<i>Local Cost (\$):</i>		40,000	40,000	40,000	40,000	\$ 160,000

**PROJECT LOCATION MAP**

