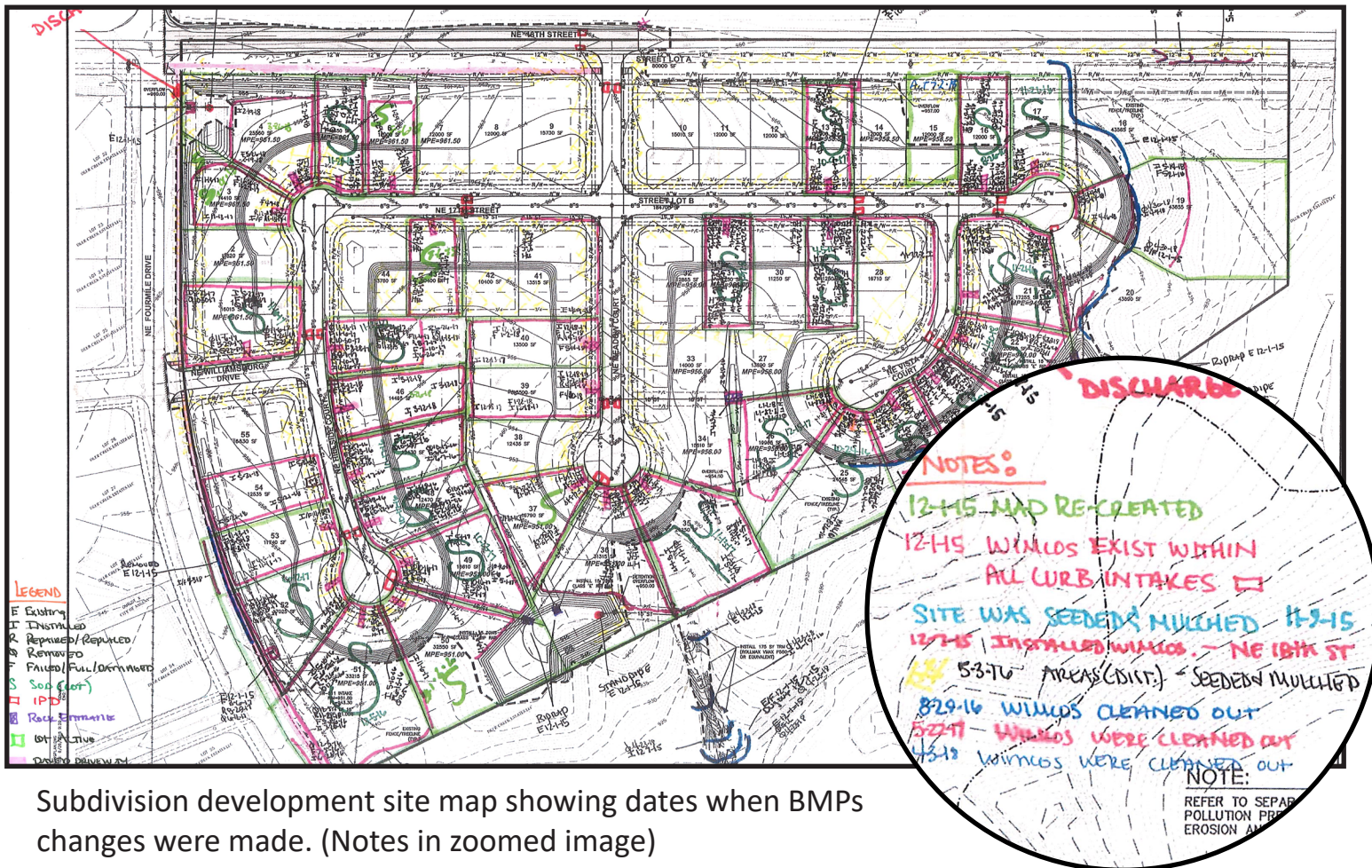


CONSTRUCTION SITE COMPLIANCE CONNECTION

Reminder to keep Site Maps and Activity Logs Updated KEEP YOUR PAPERWORK IN COMPLIANCE!

The SWPPP for a construction site is a living document that must be updated when any activity on the site is begun, completed, or temporarily paused. Site maps or plans are required to have dates placed and drawn on the plan where best management practices (BMPs) have been added, removed, damaged, and repaired. An activity log, if used, should contain similar information and include dates for land disturbance activities such as mass grading, utility installation, building construction, and final stabilization. An up-to-date SWPPP will make inspections fast and easy!



Subdivision development site map showing dates when BMPs changes were made. (Notes in zoomed image)