

APRIL 2024

ALTOONA, IOWA



Altoona's Residential Tree Sale Pickup

In recognition of Arbor Day, the City of Altoona is selling a limited supply of trees to residents who live within Altoona City limits, with a limit of 2 trees per household.

The remaining trees being offered include Serviceberry and Bald Cypress. The trees will be 3/4" to 1" caliper in a 7 & 10-gallon pot. The cost is \$30 per tree. (NO GUARANTEE)

Pre-sale of the trees began on March 4 at Altoona City Hall, 900 Venbury Dr. SW Suite A. Sales continue until they are fully reserved, or until the pick-up event occurs.

Trees can be picked up at the Altoona Aquatic Center parking lot at 1200 Venbury Dr. on Saturday, April 27, from 9 - 11 a.m.

This program is sponsored by the City of Altoona and Iowa Native Trees and Shrubs and Gerdes Nursery INC.

Final Spring Brush Drop-Off

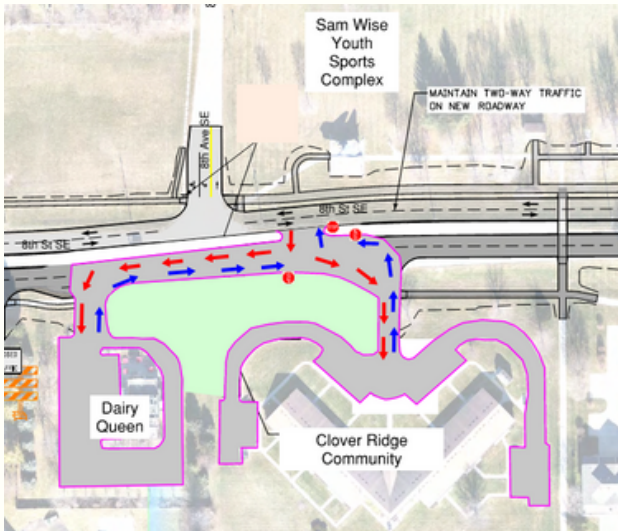
The final resident brush drop-off event for this spring will be held on Saturday, May 4 from 8 a.m. – Noon. Following this event, two drop-off events will be held in the fall on the first Saturdays in September and October.

As always, the brush drop site is for Altoona residents only, absolutely no contractors are allowed, and we only accept branches, limbs and trunks smaller than 12" in diameter. No leaves or bushes are allowed.

Final Spring Brush Drop-Off Continued

To locate the brush drop-off, enter the Utilities Department service road from 8th Street SW. Continue south on the road, past the Utilities Department buildings, and continue up the hill. The brush drop-off will be on your left.

Traffic shifted on 8th St SE



As of April 8, traffic has shifted on 8th St SE to travel on the newly paved roadway near Sam Wise Sports Complex. Because of this change to traffic, the intersections with Wren Drive and Falcon Drive will be blocked at 8th St SE until construction ends.

The intersection of 8th Ave SE and 8th St SE has reopened with the traffic switch, as have the parking lots at Sam Wise Sports Complex. Access to Dairy Queen and the Clover Ridge Apartments will be maintained and usable throughout this construction work.

For the latest on this project, please visit www.altoona-iowa.com.

Spring Creek Adaptive Boat Launch Open

A new boat ramp, dock and canoe and kayak launch is ready for residents at Spring Creek Park's South Pond. The dock and canoe and kayak launch are accessible and can be used by adaptive boaters.

A special event to officially open the launch for use was held on April 16. Future events showcasing water safety are planned for the future and will be shared on the city's website and social media accounts.

Please note that recreationists are limited to using small boats with no motor, or electric motors on this waterway. Boats with gas motors are not permitted on the water at all, and the entire pond is a no wake zone.

