

**BOARD OF COMMISSIONERS
MEETING AGENDA**

August 21, 2023 at 4:00 p.m.

1. Call to order
2. Roll call
3. Pledge of Allegiance
4. Brief public comment
5. Agenda
6. Consent Agenda
 - a. Authorize veterans millage rate at .10 mil
 - b. Appoint Mike Dugas, Eric Dahlgren, and Tina Herron to the Alger County Veterans Affairs Council
 - c. Authorize participation in Operation Green Light (courthouse entryway light)
 - d. Approve FY24 Child Care Fund
 - e. Approve payment to the Alger County Fair Board in the amount of \$750.00 (101-765-969.000)
 - f. Approve amending POAM agreement for Deputy EMD position from *Sgt. Pay rate to officer's current rank*
 - g. Approve chair to sign letter of support for Michigan Institute of Forensic Science and Medicine
 - h. Approve reappointing Rita Hale to the Alger County Jury Board for a six-year term ending 4/30/29
 - i. Approve quote from PowerDMS for staff scheduling system
 - j. Approve amended Defined Benefit Adoption Agreements
 - k. Financial Matters
 - A. Approve payment of all Board Bills
 - B. Approve Financial Reports for all funds (Trial Balance Report Available)
 - C. Approve Amendments and Transfers (See Sheet)
7. Minutes
 - a. Special Board of Commissioners meeting minutes of July 5, 2023
 - b. Committee of the Whole meeting minutes of July 10 12, 2023
 - c. Board of Commissioners meeting minutes of July 17, 2023
8. Julia Jogger with CUPPAD regarding Alger County Recreation Plan 2023 – 2028 (DRAFT)
9. Approve Norm's Construction bid for airport building in the amount of \$3,000.00 – Monies to come from Airport Fund – Capital Improvements
10. Appoint Richard Bowerman, Airport Manager to the Airport Committee
11. Discuss establishing an Airport Advisory Committee
12. Cost saving ideas / revenue sources
13. Unfinished Business
14. Committee Reports
15. Resolutions
16. Correspondence
17. Board Comments
18. Staff Comments
19. Brief Public Comment
20. Adjourn

**(PUBLIC COMMENT IS LIMITED TO TWO (2) MINUTES PER PERSON PER BOARD POLICY)
(PLEASE STATE YOUR NAME AND STEP UP TO THE MICROPHONE)**

ALGER COUNTY RECREATION PLAN 2023-2028



Photo courtesy: Aaron Peterson Studios



CUPPAD

COMMUNITY INPUT DRAFT 8/11/2023

ALGER COUNTY
RESOLUTION

Order

CONTENTS

1 INTRODUCTION + PURPOSE

5-YEAR RECREATION PLAN
PROCESS + GUIDING PRINCIPLES

2 COUNTY DESCRIPTION

DEMOGRAPHICS + HISTORY

3 ADMINISTRATIVE STRUCTURE

COUNTY STAFFING + FUNDING

4 NATURAL ENVIRONMENT

LANDSCAPE TYPOLOGIES, SOILS, TERRAIN, AND WILDLIFE

5 RECREATION INVENTORY

RECREATION RESOURCES WITHIN THE COUNTY

6 COMMENTS + ISSUE SCOPING

COMMUNITY SURVEY RESPONSES
COMMUNITY VALUES

7 VALUES, GOALS + OBJECTIVES

STATEWIDE COMPREHENSIVE OUTDOOR RECREATION PLAN
ALGER COUNTY VALUES, GOALS + OBJECTIVES

8 ACTION PLAN

PRIORITY PROJECTS

APPENDIX A PUBLIC NOTICES + COMMUNITY SURVEY RESULTS

APPENDIX B GRANT HISTORY

APPENDIX C UNIVERSAL ACCESS DESIGN GUIDELINES

1

Introduction

5-YEAR RECREATION PLAN

Communities throughout Michigan develop and update recreation plans to ensure qualification for annual Michigan Department of Natural Resources (MDNR) funding opportunities.

The 5-year recreation plan must adhere to a format defined by the MDNR and outline priority goals, objectives, and projects with the potential to be completed within the 5-year window and beyond.

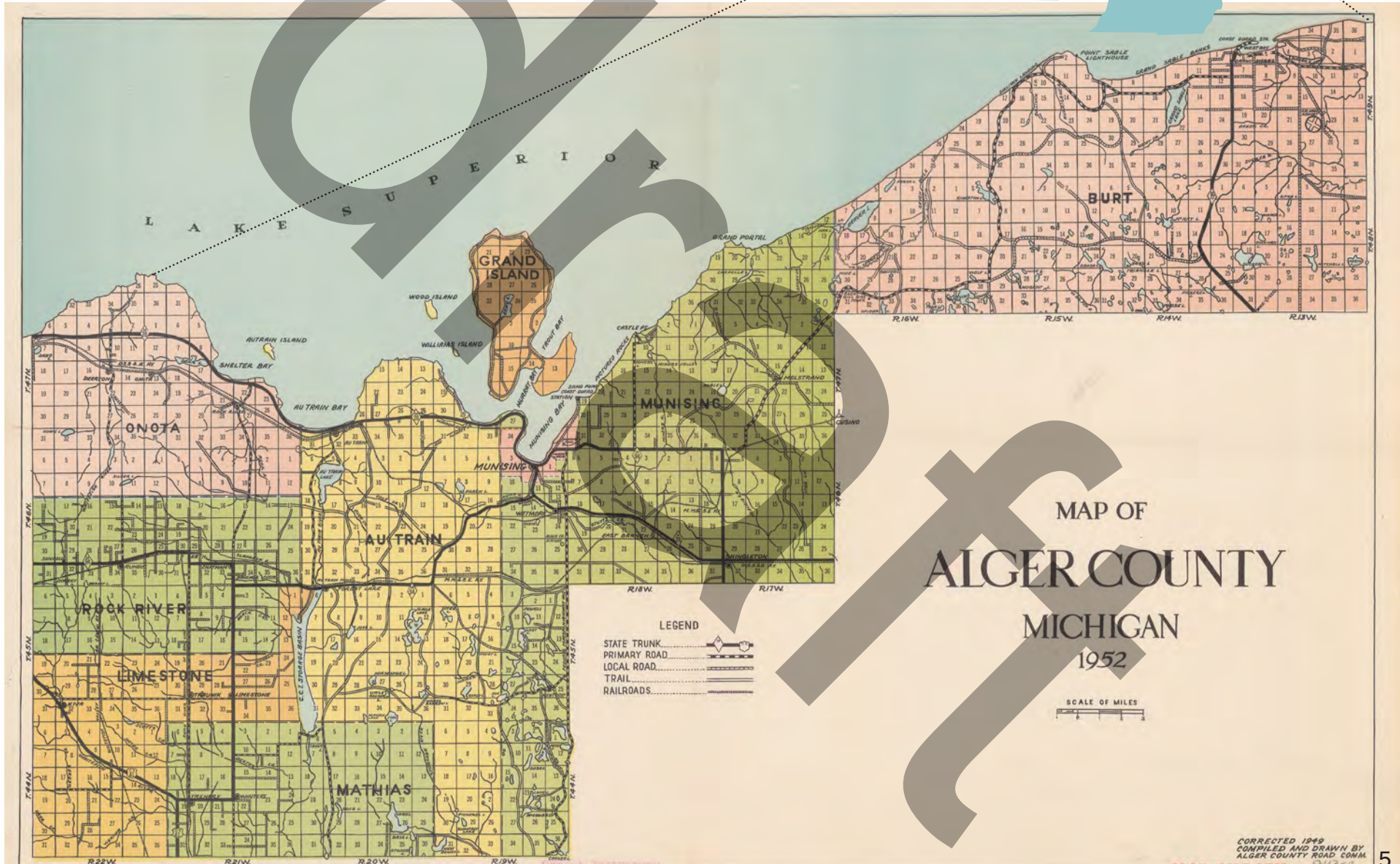
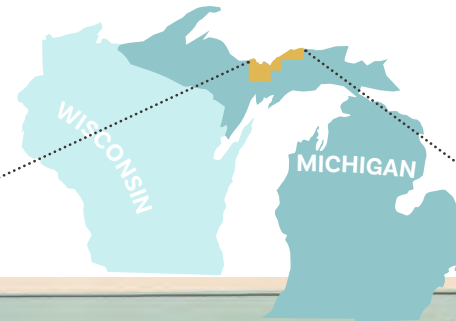
This document synthesizes data on community demographics, natural resources, existing recreational assets, operational management, citizen input, and community partnerships to generate an all-inclusive map for recreation in the community. It describes community values, highlights common goals and objectives, and outlines strategies to achieve these goals.

Looking beyond the 5-year window, this document will serve as a road map for future endeavors improving parks for decades to come. The 2023-2027 Recreation Plan will assist County officials in determining priority projects to nurture an already expansive parks system. It will outline strategies for making parks accessible to all and provide park designs that allow future generations to grow and prosper within.



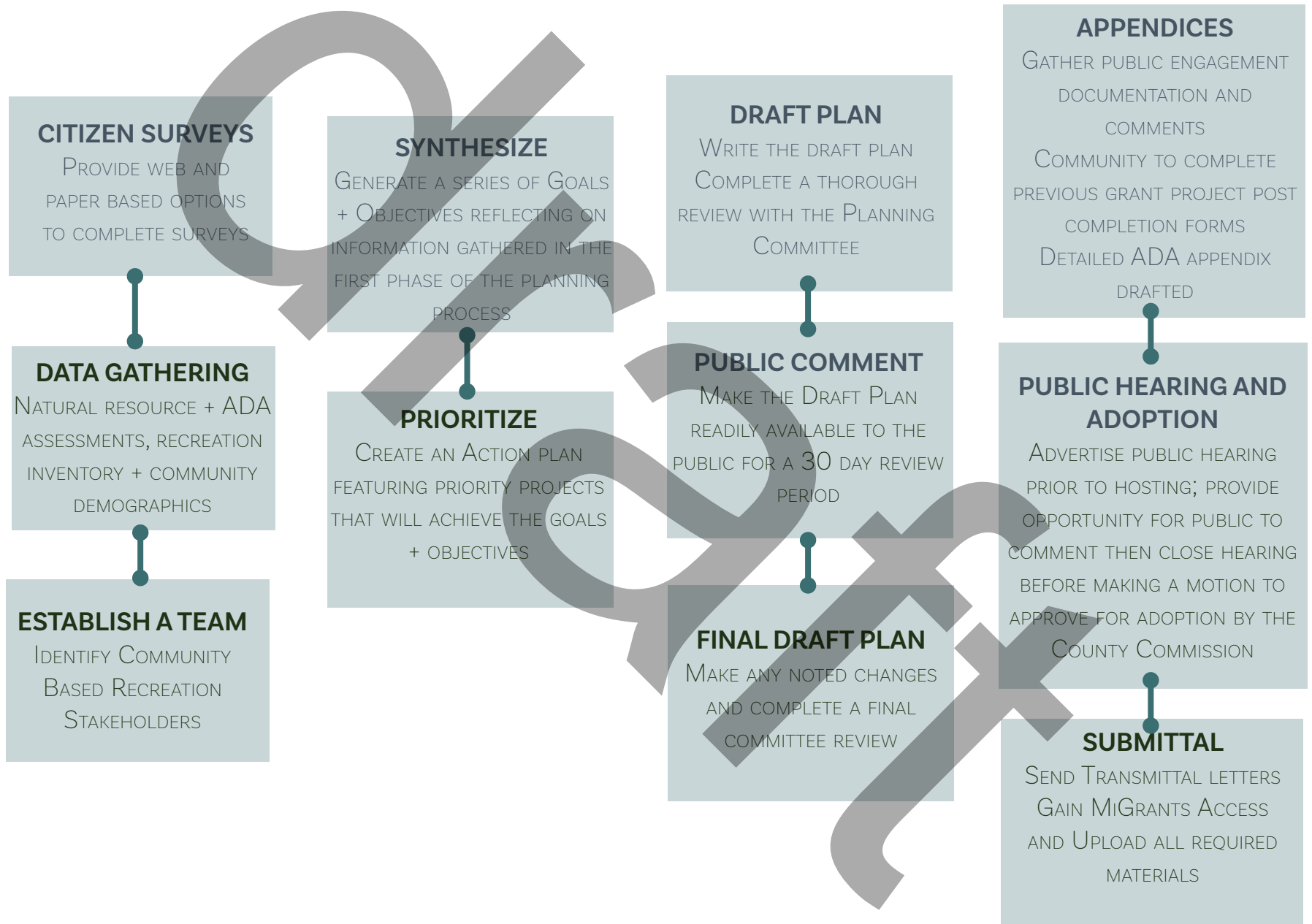
PHOTO COURTESY: AARON PETERSON STUDIOS

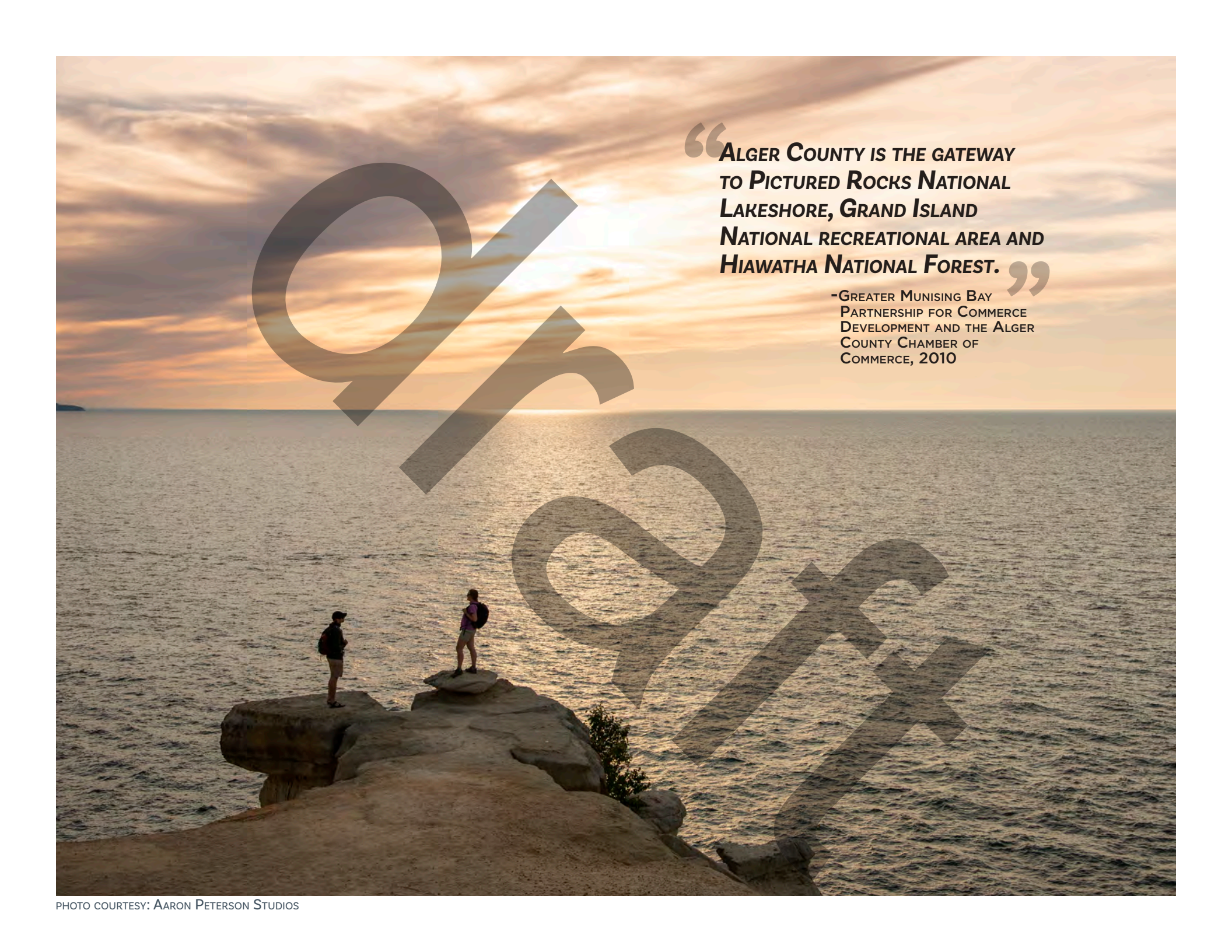
ALGER COUNTY



CORRECTED 1949
COMPILED AND DRAWN BY
ALGER COUNTY ROAD COMM.

PLANNING PROCESS





**“ALGER COUNTY IS THE GATEWAY
TO PICTURED ROCKS NATIONAL
LAKESHORE, GRAND ISLAND
NATIONAL RECREATIONAL AREA AND
HIAWATHA NATIONAL FOREST.”**

**-GREATER MUNISING BAY
PARTNERSHIP FOR COMMERCE
DEVELOPMENT AND THE ALGER
COUNTY CHAMBER OF
COMMERCE, 2010**

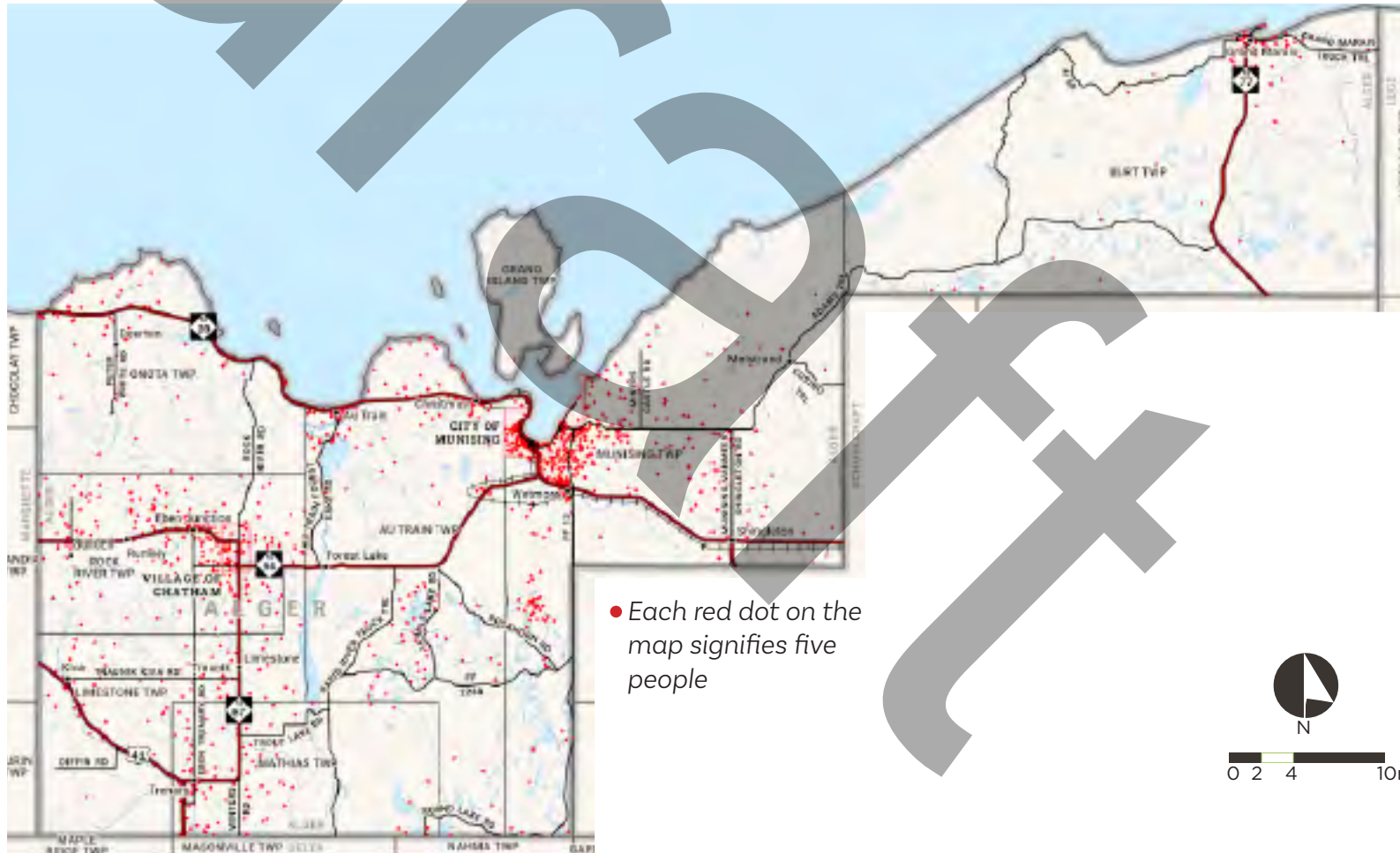
2

County Description

HISTORY + DEMOGRAPHICS

Alger County abounds in natural beauty and is a major year-round recreation destination with more than 80 miles of Lake Superior shoreline, including the Pictured Rocks National Lakeshore. A large portion of the 918 square mile land area is within the Hiawatha National Forest, including Grand Island in Munising Bay. There are 266 inland lakes, over 600 miles of rivers and streams, and 17 waterfalls in the county.

The population, 8,842 per the 2020 Decennial Census, is concentrated in the county seat of Munising and adjacent townships. Production of specialty papers and timber products lead the manufacturing sector. Total timberland in the county approximates 470,000 acres, two-thirds of which is hardwood forest. The largest county employers are the Alger Correctional Facility, Timber Products Michigan and Neenah Papers Corporation.



INDIVIDUAL JURISDICTIONS

Alger County contains eight general law townships, one village, and one city. The City of Munising is the county seat and population center. Townships include: Au Train, Burt, Grand Island, Limestone, Mathias, Munising, Onota, and Rock River. Chatham is the lone village.

AU TRAIN | The original county seat was here, In 1901 or 1902 the seat was moved to Munising. Development is concentrated in the community near where the Au Train River meets Lake Superior. The river is a popular summer recreation destination as well as the beaches along Lake Superior's shoreline. The Duluth, South Shore and Atlantic (later known as the Soo Line) rail line between Marquette and Munising was discontinued and has been removed. This corridor now serves as a snowmobile trail in the winter months.

CHATHAM | Chatham was incorporated as a village in 1964 to allow for financing of a public water supply system. Michigan State University's agriculture research facilities are within the boundaries of the village and consume about 30 percent of the land area. Snowmobile Trail 8 passes through the village.

CHRISTMAS | Platted in 1940 as an unincorporated village, Christmas was a railroad station and located near the charcoal furnaces at the preserved Bay Furnace site. It hosts a collections of businesses and residences primarily along M-28 including the Kewadin Casino.

DEERTON | This settlement was a station along the DSS&A rail line just south of M-28. The Au Train- Onota School and scattered residences remain.

EBEN | A small collection of residences located just to the west of Eben Junction.

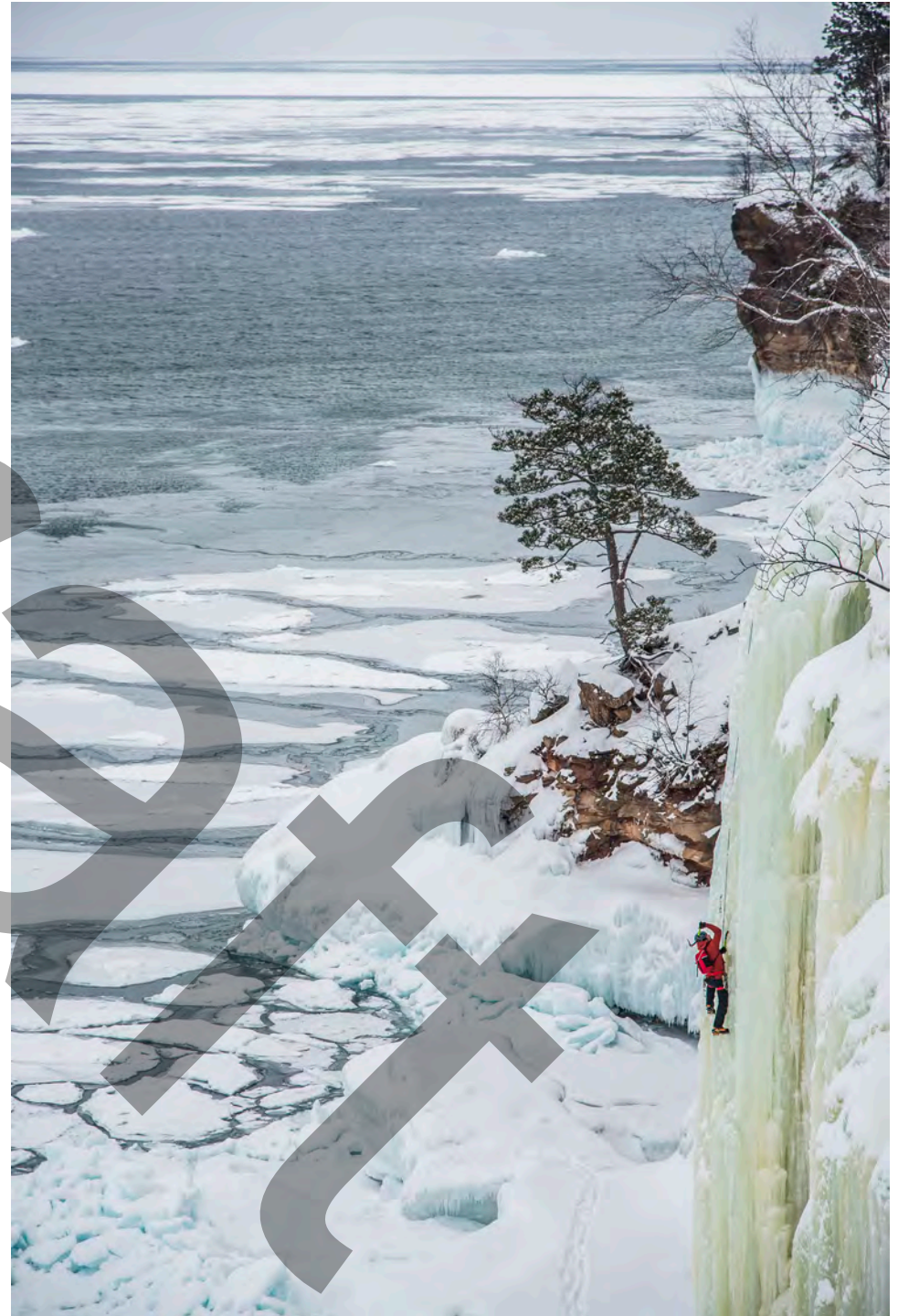


PHOTO COURTESY: AARON PETERSON STUDIOS

INDIVIDUAL JURISDICTIONS

EBEN JUNCTION | Located where the Soo Line Railroad spur from Rapid River and Lake Superior and Ishpeming Railroad from Marquette County to Munising cross. County road H-01 intersects with highway M-94 at this location. Superior Central School is located here.

FOREST LAKE | Located 13 miles southwest of Munising. This was once a station on the Munising, Marquette and Suothern Railroad.

GRAND MARAIS | Hosts a natural bay/harbor first used by the native tribes. The first attempted settlement occurred in 1850 and permanent settlement during the logging boom 20 years later. A narrow gauge railroad served the community through it's boom time in 1910. Today Grand Marais is a small settlement on the northeast end of Pictured Rocks National Lakeshore and hosts a variety of tourists.

KIVA | Was once a small settlement on the Whitefish River.

LIMESTONE | This settlement today includes several commercial establishments, the Township Hall and a few homes along highway M-67 between Chatham and Trenary. It was settled in 1889 and named for the limestone bed of nearby Johnson Creek. **MELSTRAND** | This former settlement is found at the junction of H58 and H52.

MUNISING | Munising was incorporated as a village circa 1896 and became the county seat in 1902. The village incorporated as a City in 1915. It is the commercial and population center of Alger County.

RUMELY | Located midway between Sundell and Eben Junction along highway M-94 and the former LS&I Railroad line. A general store is the settlement's only commercial establishment. The site includes a few scattered residences.

SHINGLETON | The community is at the intersection of highways M-94 and M-28. Canadian National Railway's line from Trout Lake to Munising parallels M-28 on its south side. A small residential population and several commercial establishments remain in this once-booming lumber town.

SUNDELL | Located 8 miles west of Chatham, the settlement of Sundell was once a railroad stop with its own post office.

TRAUNIK | This community was settled by immigrants from Slovenia around 1900 attracted to available work in mines and lumber camps. The Slovenian hall and other buildings marking the settlement are found at the intersection of county roads H-01 and H-44.

TRENARY | Trenary was settled as a mill town and eventually was surrounded by a large farming community. A small concentration of commercial establishments is found along the main street and M-67 in the town area. Additional commercial activity is found along highway US-41. A community water system was completed in 1991.

VAN MEER | A FORMER STATION ON THE MUNISING, MARQUETTE AND SOUTHEASTERN RAILROAD EAST OF MUNISING.

WETMORE | Sometimes referred to as Old Munising, Wetmore was a station location of the Duluth South Shore and Atlantic Railroad. The settlement was named for Fred Wetmore, a local land investor.

COUNTY DATA

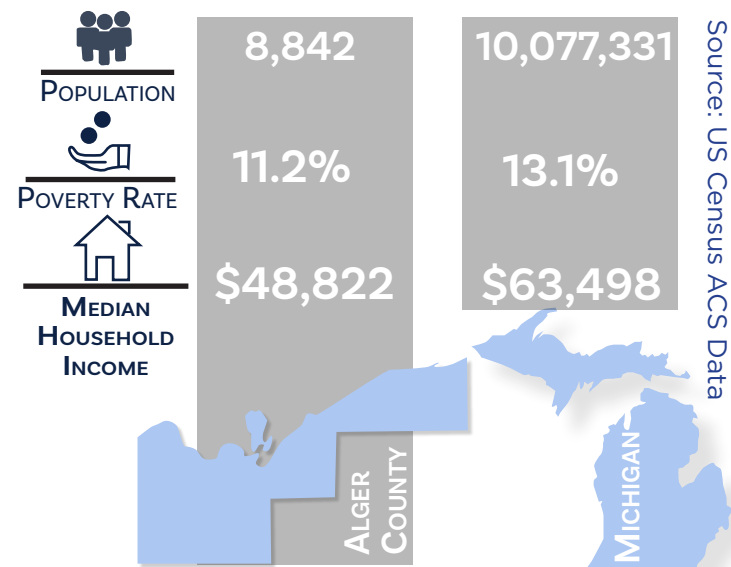
POPULATION CHANGE FROM 1960-2020								PERCENT CHANGE
YEAR	1960	1970	1980	1990	2000	2010	2020	1960-2020
ALGER COUNTY:	9,250	8,568	9,225	8,972	9,862	9,601	8,842	+11.6%
MICHIGAN:	7,823,194	8,881,826	9,262,044	9,295,277	9,938,444	9,883,640	10,077,331	+22.4%

Assessing the number of people in the community and their demographic characteristics helps planners and policy makers determine the needs of the community. For recreation planning, demographic data is useful when defining recreation goals and guidelines for a community. The figures in this section have been sourced from the US Census database.

The 2020 population of Alger County was 8,842 a decrease from the 2010 figure of 9,862 (see chart above). The median age was 49.3 slightly older than the median age in 2000 of 45.0. This figure paired with the pie charts below indicates an aging demographic within the county. The 2020 data also notes roughly 19% of the county's population has a disability. When improving or developing facilities the county will follow Universal Accessibility guidelines ensuring all residents and visitors can access and participate as they wish.

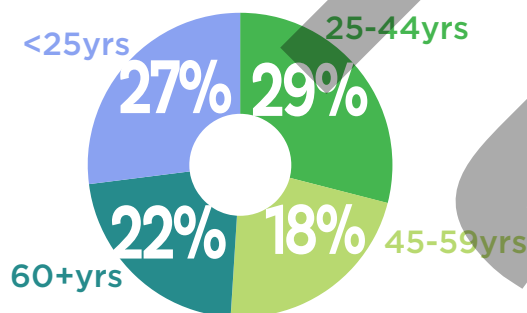
In 2020 the mean household income was \$55,128 an increase of 10% from \$49,632 in 2010. Between 2000 and 2020 Grand Island Township has seen a population decrease of 22.2% and the City of Munising has seen a decrease of 19.9%. In contrast, Onota Township has seen a population increase of 19.7% between 2000-2020. Although not as dramatic of changes, other Alger County townships have generally witnessed a declining population in recent decades. This is in part due to a retired population settling within the area and limited job prospects to attract younger demographics. The increased population in areas such as Onota and AuTrain Townships indicate a desire for individuals to settle along the waterfront not far from urban centers such as Marquette and Munising.

With a declining population, aging demographic and increased household income, the county should consider pursuing recreation opportunities that cater to an older demographic. To encourage younger residents and families to move to the area additional leisure and recreation amenities that attract these individuals should be incorporated into county priorities, ensuring a future of sustained population.



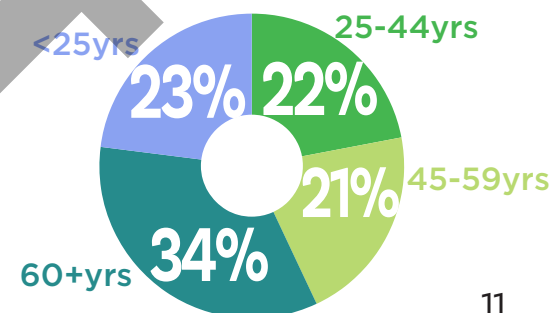
AGE | 2000

Source: US Census ACS Data



AGE | 2021

Source: US Census ACS Data



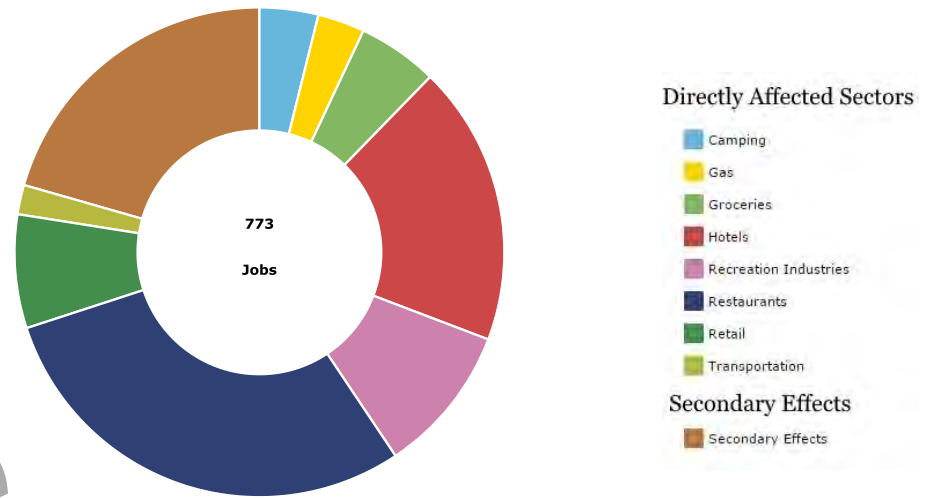
PARKS, RECREATION AND THE TOURISM ECONOMY IN ALGER COUNTY

Alger County has an abundance of natural resources and recreation destinations for residents and visitors to explore. As the gateway to Pictured Rocks National Lakeshore, Grand Island National Recreation Area, and Hiawatha National Forest, the county's economy relies heavily on its natural assets.

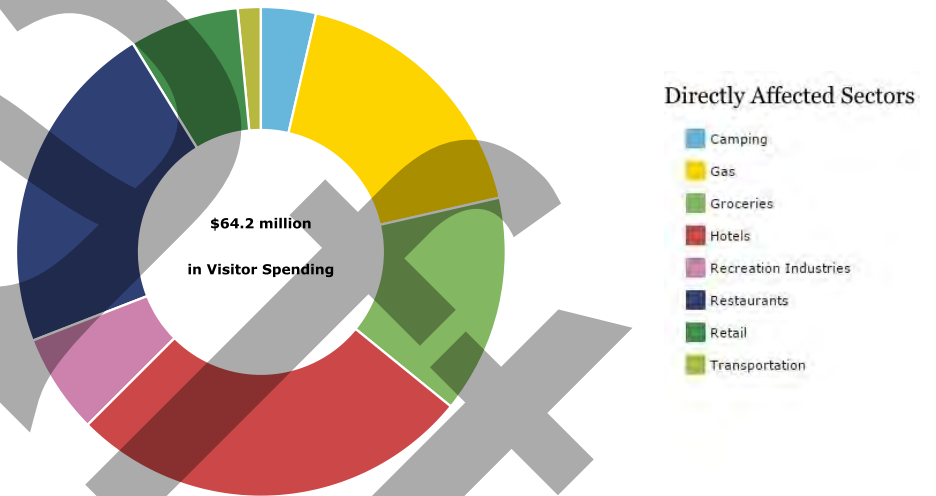
Two of the largest exporting businesses within the county also rely on its forested areas including Neenah Paper, Inc and Timber Products.

The National Parks Service completes careful analyses of the economic impact specific parks have including the Pictured Rocks National Lakeshore. In 2021 the park saw visitation rise to 1.3 million with an estimated \$64.2 million spent by visitors in local gateway regions. These expenditures supported an estimated 773 jobs within the region. Graphs illustrating the distribution of jobs and visitor spending are located to the right. For a county with a population of 8,842 residents, 3,147 who were recorded as being in the labor force in 2020, 773 equates to 25% of the county's civilian labor force.

The Michigan Economic Development Corporation also released figures noting visitor spending by county. In 2016 the recorded visitor spending within the county was \$40.4 million and in 2021 this figure increased to \$52.2 million. The state and local tax revenue associated with the 2021 spending figure equated to \$5.3 million. The economic benefits associated with increased visitation within the region are palpable, but as the community survey responses reflect, there is some room for change in this growing tourism economy. This concept is explored further in Chapter 6: Comments and Issue Scoping.



Total Jobs Contributed to Pictured Rocks National Lakeshore Gateway Economies



Total Visitor Spending (Pictured Rocks National Lakeshore)

SOURCE: [HTTPS://WWW.NPS.GOV/SUBJECTS/](https://www.nps.gov/subjects/)

TRANSPORTATION + TRAILS

Highways M-28, M-94, US-41 and M-67 are the most heavily traveled roadways in the county. Highway M-77 and Federal Forest Highway 13 are vital links to northern and southern parts of the county. Total state trunkline mileage within the county is 105.4 miles. As illustrated in the map, these highways link communities to recreation destinations and other places of interest.

The county houses a wealth of snowmobile and orv trails and a spectacular section of the North Country Trail which is also part of the Iron Belle Trail. Some discussions have been had regarding the potential extension of the Iron Ore Heritage Trail that runs through Marquette County into Alger County where it could potentially link many of the Alger County communities with a multi-modal hard surface non-motorized trail.

County-wide public transportation is provided by the Alger County Transportation Authority (ALTRAN). Dial-a-ride service is available 7 days a week and a weekday shuttle transports passengers between Munising and Marquette 3 times a day. AlTran also provides a monthly shopping shuttle from Grand Marais to Marquette. Senior citizens are the most frequent users on the shuttles with some Northern Michigan University students also utilizing the shuttle for their commute.

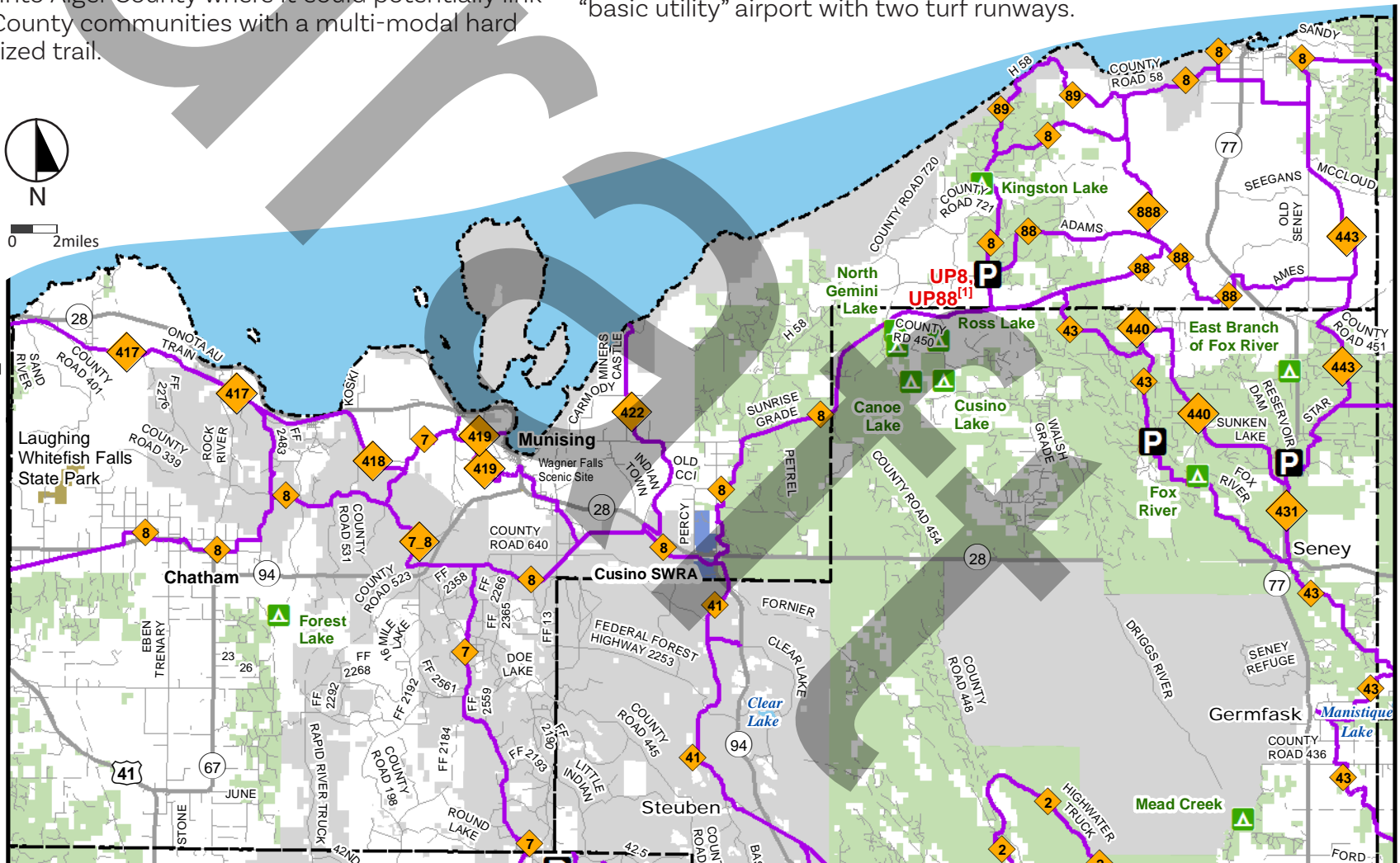
Hanley Field in Munising Township hosts a 4,000 foot turf runway and is operated seasonally from May 1st through October 15th. It is licensed by the Michigan Department of Transportation, Bureau of Aeronautics as a "general utility" airport. Burt Township hosts a "basic utility" airport with two turf runways.

MICHIGAN DEPARTMENT
OF NATURAL
RESOURCES
ALGER COUNTY
SNOWMOBILE TRAILS



0 2miles

- Parking lot
- State forest campground
- Snowmobile trail
- State park boundary
- State forest land
- State game area
- Federal land
- Lakes and rivers



3

Administrative Structure

STAFFING

Alger County does not currently have a parks and recreation program although there are several other natural resource and recreation oriented organizations within the county including: the Alger Parks and Recreation Department, Alger Conservation District, and Alger County Fair Board.

The Board of Commissioners serves as the decision making body for recreation planning related efforts. Currently, the County Administrator position manages the day to day tasks related to communications with the county board and community members.

As a comparison, Menominee, Marquette, Delta and Dickinson Counties each have county park properties they own and manage. A chart illustrating these county's' parks and recreation program organizational structures on the following page. By using these adjacent county organizations and existing parks and recreation related organizations within Alger County as guides and partners, the county has the potential to develop its own park and recreation organization that reflects the needs and desires of its residents.

Organizational Charts:

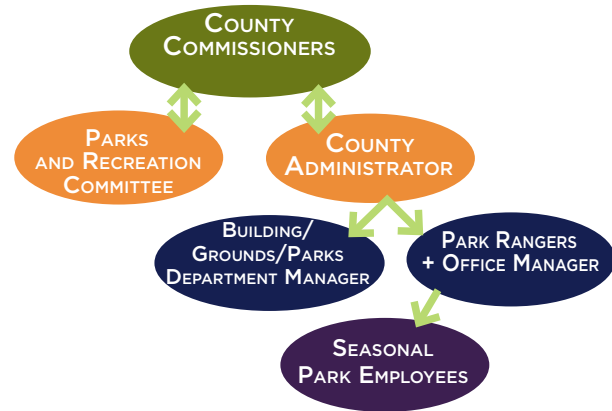
RELATED ALGER COUNTY BASED ORGANIZATIONS



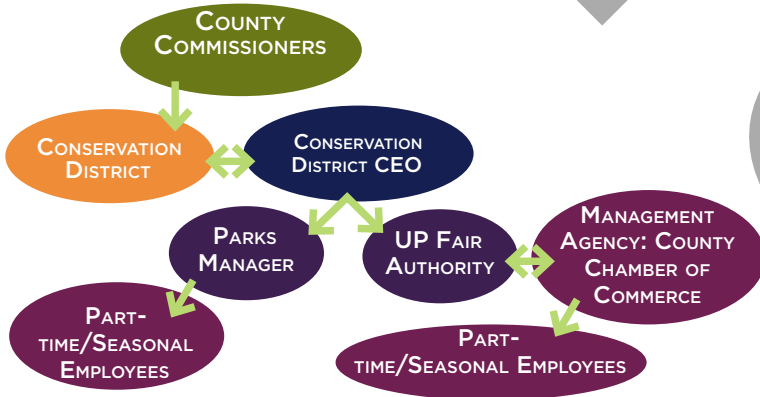
Dickinson County Organizational Chart



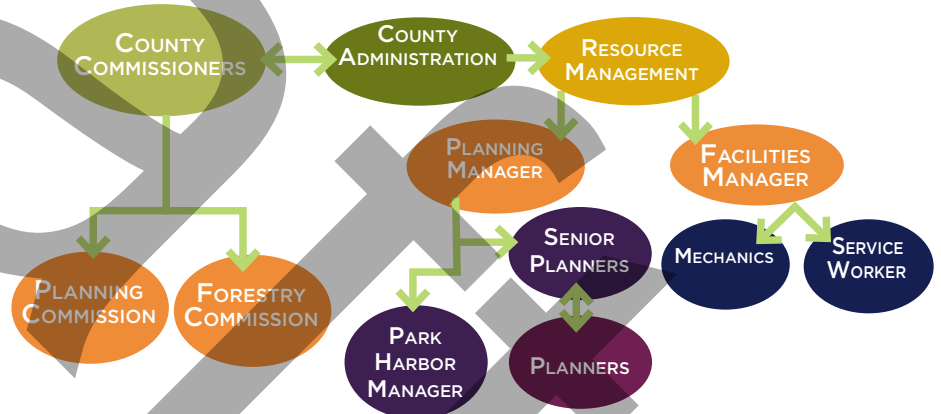
Menominee County Organizational Chart



Delta County Organizational Chart



Marquette County Organizational Chart





2022 KEY FINDINGS

The National Recreation And Park Association [NRPA] has assembled a 2022 Agency Performance Review featuring park metrics from communities throughout the nation. The goal of this document is to help local park systems identify the optimal mix of facilities and programming for their community. Key 2022 findings are listed below:

95% of Park + Recreation Agencies have Playgrounds

10.4 acres of parkland for every 1,000 residents

2,323 Residents per Park:

8.9 Full-Time Equivalent Employees (FTEs) per 10,000 Residents:

\$93.01 Annual Operating Expenditures per Capita:

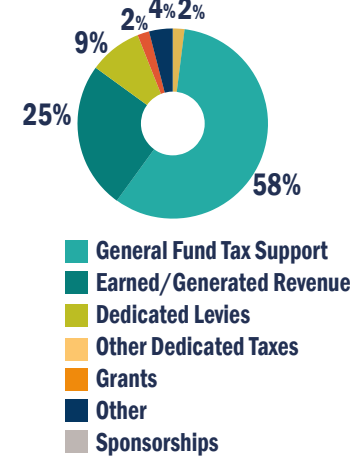
14 miles of silent sport trails

Key programming activities include themed special events, social recreation events, team sports, fitness enhancements classes, and health + wellness education.

OPERATING EXPENDITURES PER ACRE The median level of operating expenditures is \$7,823 per acre of park and non-park sites managed by the agency.

OPERATING EXPENDITURES PER FTE The typical park and recreation agency spends \$102,530 in annual operating expenditures for each employee.

DISTRIBUTION OF OPERATING EXPENDITURES At the typical park and recreation agency, staffing costs account for 54% of the operating budget.



Key Responsibilities of Parks + Recreation Organizations

	All Agencies	Less than 20,000	20,000 to 49,999	50,000 to 99,999
Operate and maintain park sites	98%	98%	97%	99%
Operate and maintain indoor facilities	91%	85%	90%	95%
Conduct jurisdiction wide special events	81%	75%	83%	82%
Operate and maintain non-park sites	69%	62%	69%	67%
Operate, maintain, or contract outdoor swim facilities/water parks	67%	51%	65%	70%
Operate, maintain, or contract racquet sport activities/courts/facilities	63%	58%	56%	73%
Administer or manage tournament/event quality outdoor sports complexes	56%	35%	53%	64%
Administer community gardens	45%	32%	50%	47%
Manage large performance outdoor amphitheaters	37%	21%	32%	43%
Operate, maintain, or contract tourism attractions	36%	25%	31%	30%
Operate, maintain, or contract golf courses	36%	13%	28%	36%
Operate, maintain, or contract indoor swim facilities/water parks	32%	19%	32%	40%
Maintain or manage beaches (inclusive of all waterbody types)	22%	15%	21%	21%
Administer or manage farmer's markets	21%	16%	24%	26%
Maintain, manage or lease indoor performing arts center	20%	10%	18%	25%
Administer or manage tournament/event quality indoor sports complexes	20%	12%	19%	22%
Operate, maintain, or contract campgrounds	18%	12%	8%	7%
Operate, maintain or contract marinas	11%	7%	6%	8%
Administer or manage professional or college-type stadium/arena/racetrack	9%	2%	5%	9%
Manage or maintain fairgrounds	6%	5%	3%	5%

*FINDINGS FROM THE 2022 NRPA AGENCY PERFORMANCE REVIEW USES SURVEY DATA GATHERED FROM 2019-2021 BY NRPA PARK METRICS

FUNDING

Although Alger County itself does not have a formal parks and recreation department and budget, parks and recreation are ingrained in almost all facets of the Alger County way of life. As the county considers the potential of formalizing and developing a parks and recreation program an annual budget must also be discussed. The previous page highlights key findings from the 2022 National Recreation and Park Association Agency Performance review. This review summarizes data received from park and recreation agencies of all sizes throughout the US.

Closer to home, the chart below features revenue and expenditures from neighboring county parks and recreation programs.

Menominee County

	2016	2017	2018	2019	2020
COUNTY APPROPRIATION	\$0	\$12,667	\$0	\$0	\$0
REVENUE	\$225,374	\$233,799	\$262,609	\$259,656	\$295,057
EXPENDITURES	\$197,904	\$246,466	\$235,530	\$213,801	\$283,311
PARKS + RECREATION BUDGET 2016-2020					

SOURCE: MENOMINEE COUNTY AUDIT REPORTS

Dickinson County

	2016	2017	2018	2019	2020
COUNTY APPROPRIATION	\$95,000	\$46,389	\$20,975	\$22,062	\$45,000
PARK BUDGET	\$152,797	\$133,487	\$121,801	\$156,597	\$181,921
PARKS + RECREATION BUDGET 2016-2020					

SOURCE: DICKINSON COUNTY RECREATION PLAN

Marquette County

	2019	2020 (anticipated)
REVENUE	\$165,954	\$116,230
EXPENDITURE	\$183,127	\$721,490*
PARKS + RECREATION BUDGET 2019-2020		

SOURCE: MARQUETTE COUNTY RECREATION PLAN

*The anticipated budget increase included improvements to: Perkins Park Playground, composting toilet and docking system, new yurts, cabin furnace replacement, improved storm water management and shoreline erosion control, replacing water heater and fuel pump at Big Bay Harbor and improvements to Sugar Loaf parking and trailhead area.

4 Natural Environment

LANDSCAPE TYPOLOGIES

Alger County is home to a diverse array of natural areas. Here, landscape typologies are utilized to showcase the various landforms influenced by terrain, soils, exposure and vegetation. By developing a clear understanding of what landscapes the county has and where they are located a more holistic understanding of the region is generated. Recreation opportunities, preferred connections between typologies, and preservation priorities begin to emerge allowing communities to formulate a vision for the ideal future landscape. Striking the right balance of development and preservation of natural resources within a community is key to maintaining a long lasting beautiful place for generations to explore and appreciate.



PICTURED ROCKS

Arguably the most spectacular landform within Alger County are the 50-200 foot multicolored sandstone cliffs rising up out of Lake Superior's waters along Pictured Rocks National Lakeshore. As noted in the previous chapter, over a million visitors flock to the region to catch a glimpse of these impressive formations.



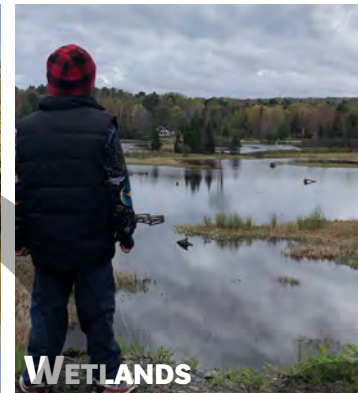
BEACHFRONT

The sandy shoreline envelops much of Lake Superior's coastline providing a sandy summer paradise for residents and visitors alike.



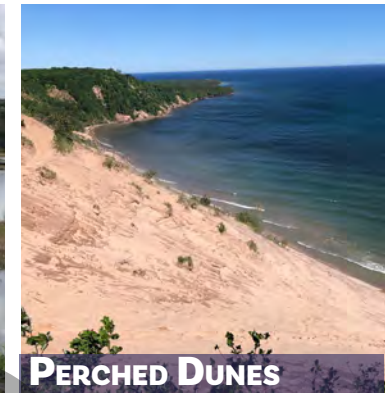
INLAND LAKES + STREAM CORRIDORS

Inland lakes dot the landscape providing a haven for many different plant and animal species as well as spaces for fishing, birding, hiking, paddling, camping and sightseeing. Stream and river corridors serve as greenways connecting parks and natural areas throughout the county. They are also sightseeing destinations, featuring many of the upper peninsula's most popular waterfalls.



WETLANDS

A combination of poorly draining soil types, bedrock close to the surface, and drainage depressions formed by glaciers provide an abundance of wetlands within Alger County. These areas contain a variety of plants including wood sorrel, northern dewberry, sphagnum moss, sedges, dogwood and various wildflower species.¹



PERCHED DUNES

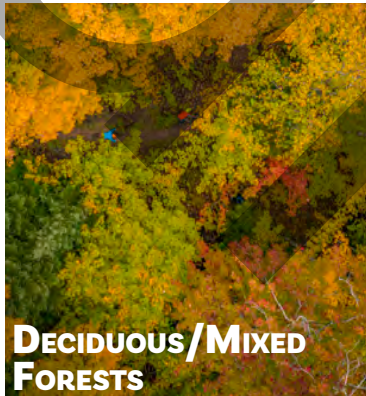
The Grand Sable Dunes within PRNL are among the best examples of perched dunes within the world. These dunes form on top of existing coastal bluffs. They contain rare plant species.

Post glacial age (10,000 years ago) and at the end of the last high water period (4,000-6,000 years ago) the rocky cliff face left by glaciers was eroded and sand-sized material was blown on shore left to settle on top of the bluff. These sands are constantly shifting and reshaping the landscape.²



CONIFER FOREST

Pockets of jack pine forests are found among the dunes and areas further inland, providing a habitat for a unique array of plant species including sand cherry, dune willow, common juniper, beach pea, hairy goldenrod, wormwood, evening primrose, and horsetail as well as native dune grasses.³



DECIDUOUS/MIXED FORESTS

Further inland from the Lake Superior shoreline the landscape is covered in beautiful deciduous/mixed forests. The original tree stands are what drew settlers to the land initially. Now the forests provide a haven for birds and wildlife, a jaw-dropping fall color display, and plenty of terrain to explore.



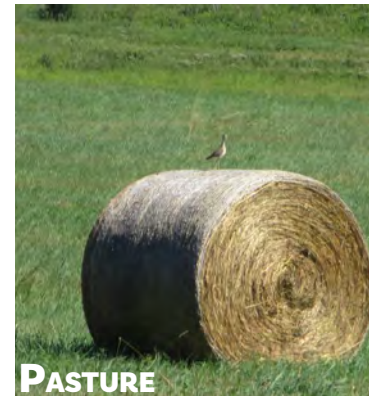
COBBLE SHORELINE

The Lake Superior shoreline varies dramatically throughout the county. Its western edge in Onota County is a mix of sandstone cliffs and cobble providing a haven for rock pickers.



HARDSCAPE + GRAVEL

The rural character of Alger County holds true with its roads as well. Beyond the main highways, county thoroughfares, and pockets of urban and residential development, the roads are often gravel. These provide a network of



PASTURE

Limestone, Chatham and Rock River Townships have rich soils and open fields for grazing and cultivating crops. The Michigan State University Upper Peninsula Research and Extension Center is located here experimenting with methods for crop cultivation and farm management.

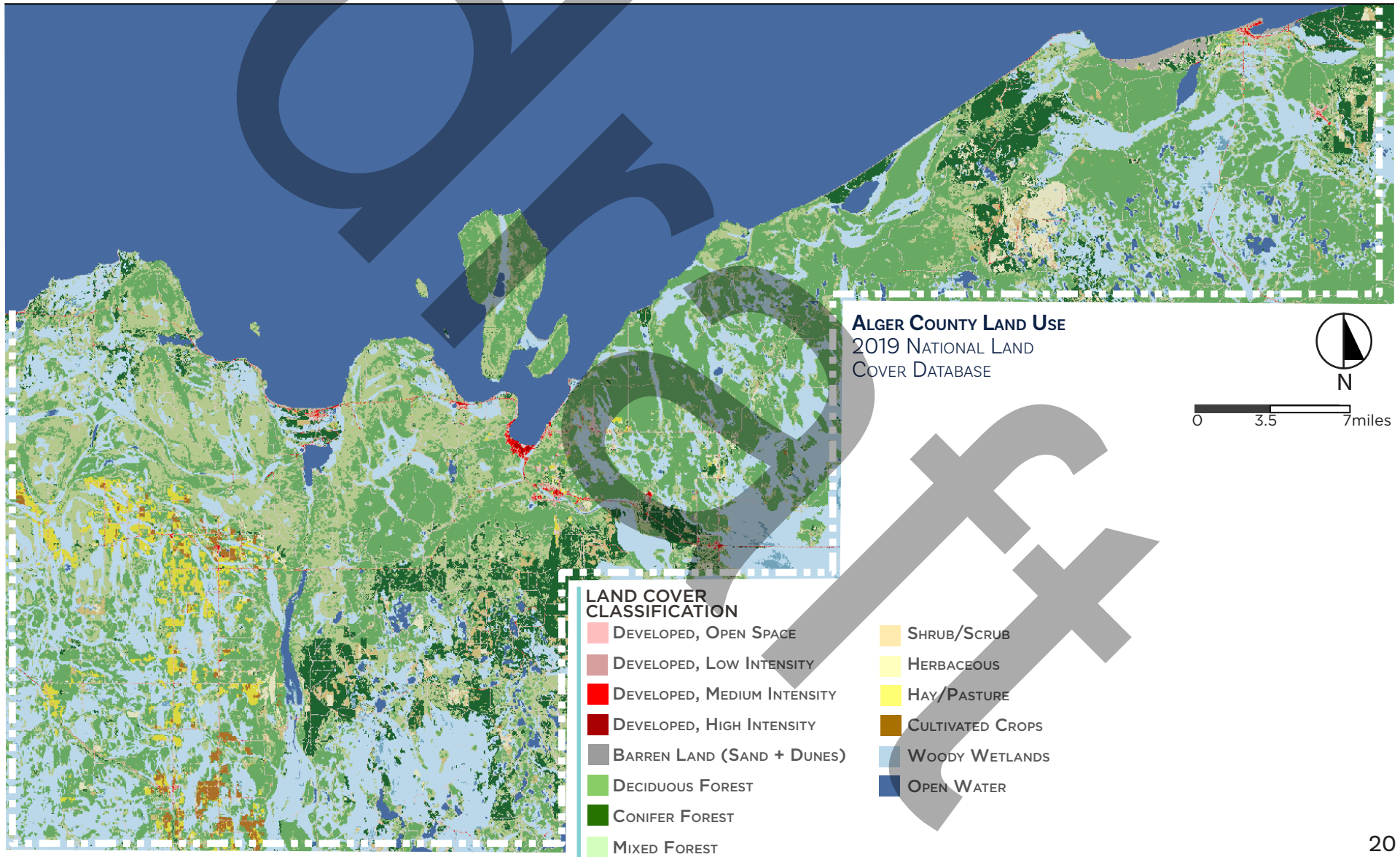
¹ United States Department of Agriculture, Natural Resources Conservation Service, and United States Department of the Interior, National Park Service. 2014. Soil survey of Pictured Rocks National Lakeshore, Michigan.

² United States Department of Agriculture, Natural Resources Conservation Service, and United States Department of the Interior, National Park Service. 2014. Soil survey of Pictured Rocks National Lakeshore, Michigan.

³ U.S. Department of the Interior. (n.d.). Sand Dunes. National Parks Service. Retrieved September 7, 2022, from <https://www.nps.gov/piro/learn/nature/sanddunes.htm>

LAND COVER

The county's landscape is dominated by a mix of woody wetlands and deciduous/mixed forests. Small nodes of development include the City of Munising, AuTrain, Grand Marais, Wetmore and the Village of Chatham. Arable lands are concentrated in the southwestern section of the county with lakes and rivers dotting much of the landscape.



WILDLIFE

Deer, bear, moose, and other smaller mammals, birds and amphibians call Alger County home. An abundance of vegetation provides food and shelter for these residents.

The Information for Planning and Consultation site hosted by the U.S. Fish and Wildlife Service notes the potential existence of several threatened and endangered species within the Upper Peninsula. Measures taken to preserve habitat and accommodate these species are critical to maintaining their existence. Water levels along the coastline can impact nesting sites for Piping Plover and Red Knot. Lynx live in boreal forests that often receive heavy snowfall and are home to snowshoe hare. White nose syndrome threatens the Northern Long-eared Bat. The biggest culprit threatening the Monarchs seems to be the disappearance of milkweed. It is critical communities consider these threatened and endangered species when planning for development.



GEOLOGY + SOILS

Geology and soils provide the foundation for all forms of life and its related activities. Soil type can help predict performance such as water infiltration, erosion potential and vegetation growth. Generating an understanding of these baseline layers is critical to developing a well rounded and feasible vision for future development and preservation measures.

The maps on the following pages were generated by the Natural Resources Conservation Service and illustrate soil properties of particular interest including, erosion potential, drainage type, arable lands and hydrology.



Erosion along Burt Township's Shoreline

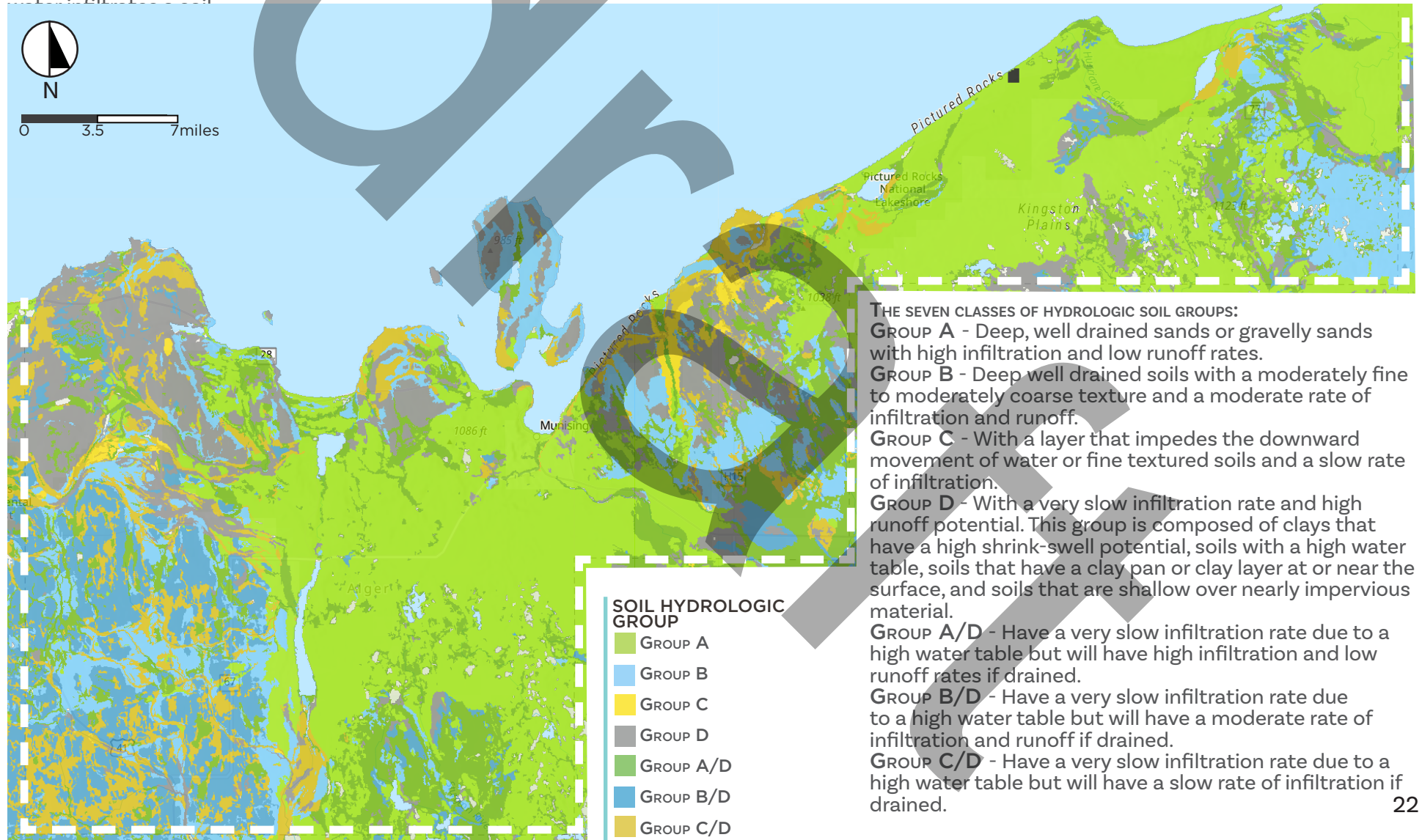
TOPOGRAPHY

Topography also influences development and recreation patterns. The steepest slopes in Alger County occur along Lake Superior's shoreline providing spectacular vistas but challenging sites to develop. These areas, including Pictured Rocks National Lakeshore, have capitalized on the spectacular nature of these areas, providing access for recreationists and preserving the vistas for future generations to witness. Other activities that capitalize on undulating and steep terrain include skiing, hiking, mountain biking and climbing. Motorized trails also criss cross the landscape providing access to spectacular lake views and waterfalls. A map illustrating the topography of the county is featured on page 24.

SOIL HYDROLOGY

When rain falls over land, a portion of it runs off into stream channels and storm water systems while the remainder infiltrates into the soil or returns to the atmosphere directly through evaporation.

Physical properties of soil affect the rate that water is absorbed and the amount of runoff produced by a storm. Hydrologic soil group provides an index of the rate that water infiltrates soil.



SOIL DRAINAGE

Soils vary widely in their ability to retain or drain water. The rate at which water drains into the soil has a direct effect on the amount and timing of runoff, what crops can be grown, and where wetlands form. In soils with low drainage rates water will pond on the soil's surface.

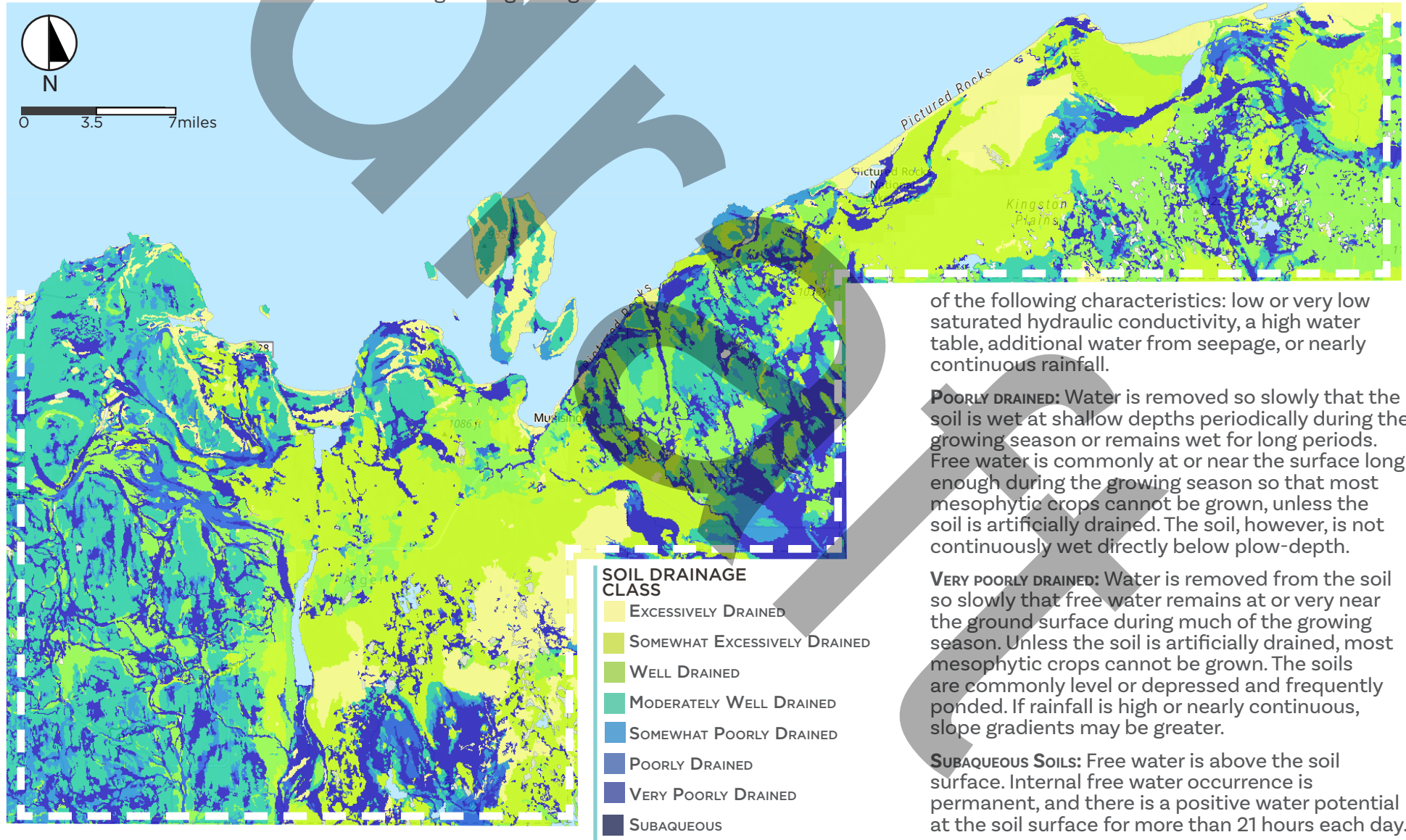
EXCESSIVELY DRAINED: Water is removed very rapidly. The soils are commonly coarse-textured and have very high hydraulic conductivity or are very shallow.

SOMEWAT EXCESSIVELY DRAINED: Water is removed from the soil rapidly. The soils are commonly coarse-textured and have high saturated hydraulic conductivity or are very shallow.

WELL DRAINED: Water is removed from the soil readily but not rapidly. Water is available to plants throughout most of the growing season in humid regions. Wetness does not inhibit growth of roots for significant periods during most growing seasons.

MODERATELY WELL DRAINED: Water is removed from the soil somewhat slowly during some periods of the year. Soils are wet for only a short time within the rooting depth during the growing season.

SOMEWHAT POORLY DRAINED: Water is removed slowly so that the soil is wet at a shallow depth for significant periods during the growing season. Wetness markedly restricts the growth of mesophytic crops [Plants that grow with medium moisture conditions], unless artificial drainage is provided. The soils often have one or more



of the following characteristics: low or very low saturated hydraulic conductivity, a high water table, additional water from seepage, or nearly continuous rainfall.

POORLY DRAINED: Water is removed so slowly that the soil is wet at shallow depths periodically during the growing season or remains wet for long periods. Free water is commonly at or near the surface long enough during the growing season so that most mesophytic crops cannot be grown, unless the soil is artificially drained. The soil, however, is not continuously wet directly below plow-depth.

VERY POORLY DRAINED: Water is removed from the soil so slowly that free water remains at or very near the ground surface during much of the growing season. Unless the soil is artificially drained, most mesophytic crops cannot be grown. The soils are commonly level or depressed and frequently ponded. If rainfall is high or nearly continuous, slope gradients may be greater.

SUBAQUEOUS SOILS: Free water is above the soil surface. Internal free water occurrence is permanent, and there is a positive water potential at the soil surface for more than 21 hours each day.

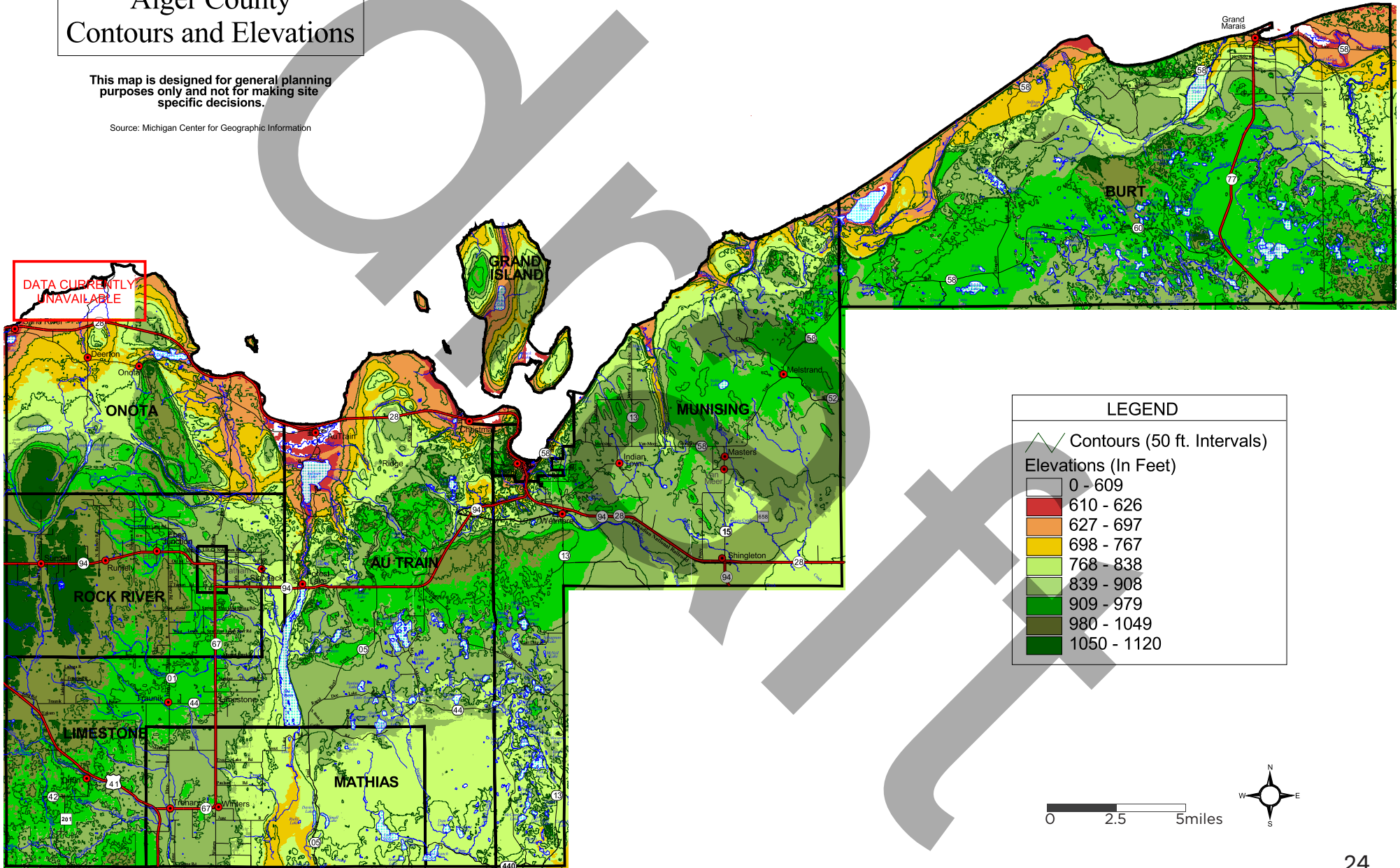
TOPOGRAPHY

Welcome to the recreation plan

Alger County Contours and Elevations

This map is designed for general planning purposes only and not for making site specific decisions.

Source: Michigan Center for Geographic Information



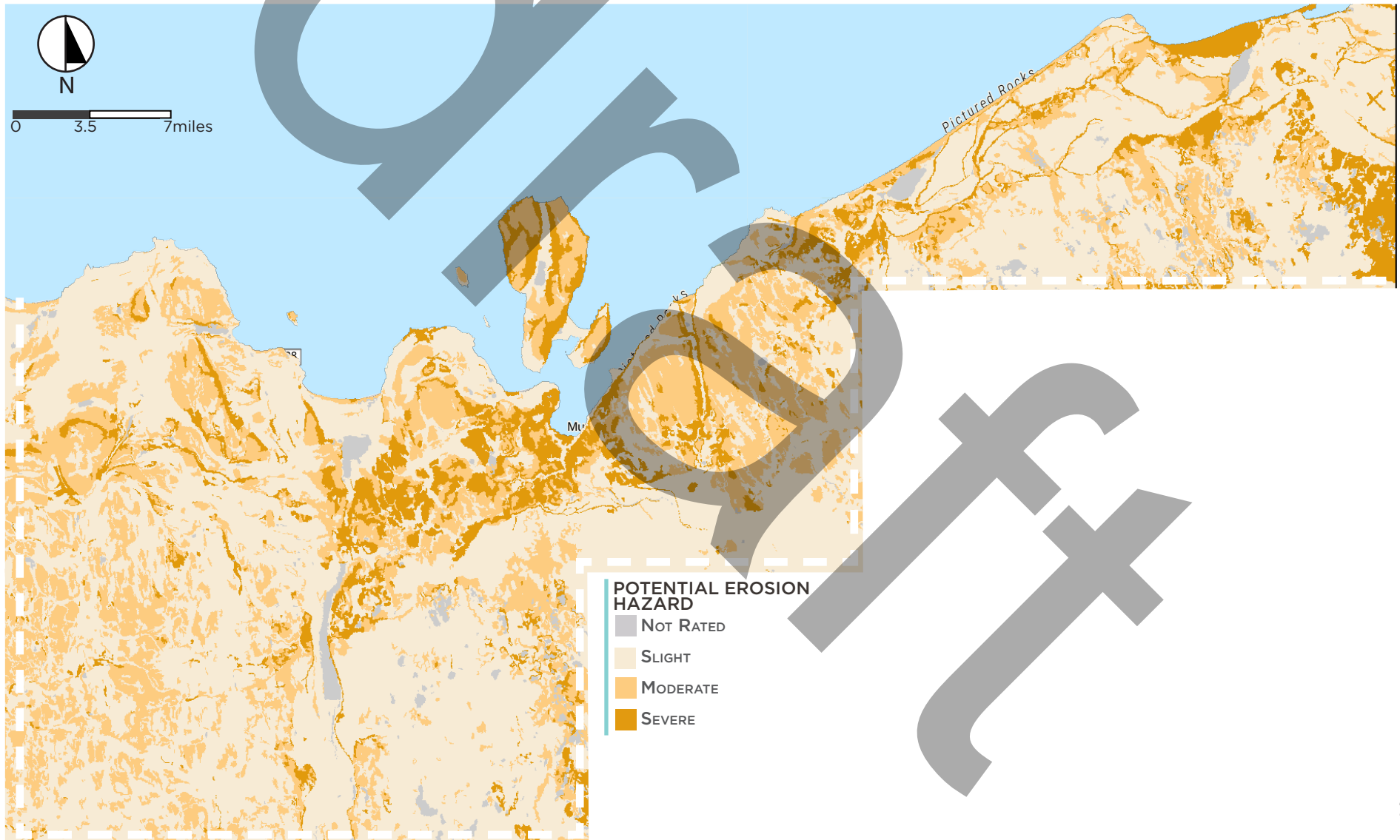
ERODIBILITY

EROSION HAZARD OF FOREST ROADS + TRAILS

Poorly planned or maintained forest roads are a major source of erosion and sediment pollution of streams. Foresters can reduce the risk and expense of forest road construction and maintenance by avoiding soils that are susceptible to erosion.

This layer provides erosion hazard of forest roads and trails in four categories:

- **NOT RATED:** The soil is not rated for erosion hazard.
- **SLIGHT:** Little or no erosion is likely.
- **MODERATE:** Some erosion is likely. Occasional maintenance may be needed. Simple erosion control measures needed.
- **SEVERE:** Significant erosion can be expected. Roads require frequent maintenance. Costly erosion control measures are needed.



5 Recreation Inventory

MAPPING

The National Recreation and Park Association (NRPA) has developed a scale to help measure an existing recreation system's park facilities and provide a baseline standard for equitable park access within a community.

A typical park and recreation system offers one park for every 2,323 residents served, with 10.4 acres of parkland per 1,000 residents. Due to its lower density population Michigan's Upper Peninsula trends toward having a higher acreage of parkland per resident. Here is a chart illustrating the different open space typologies defined by NRPA and the desired minimum amount of park space per community.



PARK TYPE	SERVICE AREA (RADIUS)	SIZE (ACRES)	ACRES/1,000 POP	PARKS (ACRES)	USES
Mini-Park	<1/4mi	1 or less	0.25 to 0.5	2.25 to 4.5 Currently: --	Specialized facility serving a concentrated or limited population
Neighborhood Park	1/4 to 1/2mi	15+	1 to 2	8.8 to 17.6 Currently: --	Hosts intense recreation activities: Play, sports fields/courts, picnicking etc.
Community Park	1 to 2mi	25+	8 to 10	70.4 to 88 Currently: --	Diverse environmental quality; may include sports complexes or more natural forms of outdoor recreation
Regional Park	1 hr drive	200+	5 to 10	44 to 88 Currently: --	Area of natural quality for outdoor recreation; boating, swimming, camping, trail use etc.
School Park				Currently: Over 1300	Park associated with an educational institution

Alger County currently does not own or manage any park properties. The map on the following page features the regional parks that are located within the county. When working at a county wide scale mini, neighborhood, and community parks are not as much of a focus area as these tend to be located within cities and villages including the City of Munising, Chatham and Grand Marais who each create and maintaining their own recreation plans. The chart below features a summary of acreage of regional parks.

Above is a diagram depicting the proposed radius each scale of park attracts users from. In the case of Alger County the largest, regionally scaled parks include: Pictured Rocks National Lakeshore, Hiawatha National Forest, and Lake Superior State Forest.

RECREATION INVENTORY

PROGRAMMING + VOLUNTEER ORGANIZATIONS

As the County does not own or manage any property yet features a wide variety of community and regional parks, it was determined the best method for generating a baseline understanding of recreation within the region would require a look at community based recreation programs and clubs.

The school districts within the county contribute immensely to recreation programming instilling an appreciation for the outdoors and physical activity from a young age. These include the Burt Township School, Autrain-Onota Public School, Munising Public Schools, and Superior Central School District.

The Alger Regional Community Foundation and Sault Tribe often provide funding for recreation and community based projects.

The Alger Conservation District has completed many conservation projects in partnership with Alger County communities and organizations.

The Superior Watershed Partnership and Land Conservancy and associated Great Lakes Climate Corps has contributed to various projects including trail building, providing public access to natural spaces, and habitat restoration projects.

The Friends of Valley Spur maintain and staff the Valley Spur Trails area featuring hiking, cross-county skiing, snowshoeing and biking trails for all ages and ability levels. The Munising Bay Trail Network assists with seeking

funding, development and maintenance of mountain biking trails within the county as well.

The annual Michigan Ice Fest is held in Munising each February and receives support from a variety of international and local sponsors including the Michigan Outdoor Recreation Industry Office.

SORVA, the Snowmobile and ORV Association of Alger County maintains and manages over 100 miles of multi-use trails throughout the Upper Peninsula.

From local farmer's markets to the county fair, and a variety of races and community events, volunteers step up to contribute to the vibrant recreational culture found within Alger County. The future for volunteer and county partnerships is bright and this plan seeks to synthesize existing and proposed future endeavors in parks and recreation for all.

ACCESSIBILITY

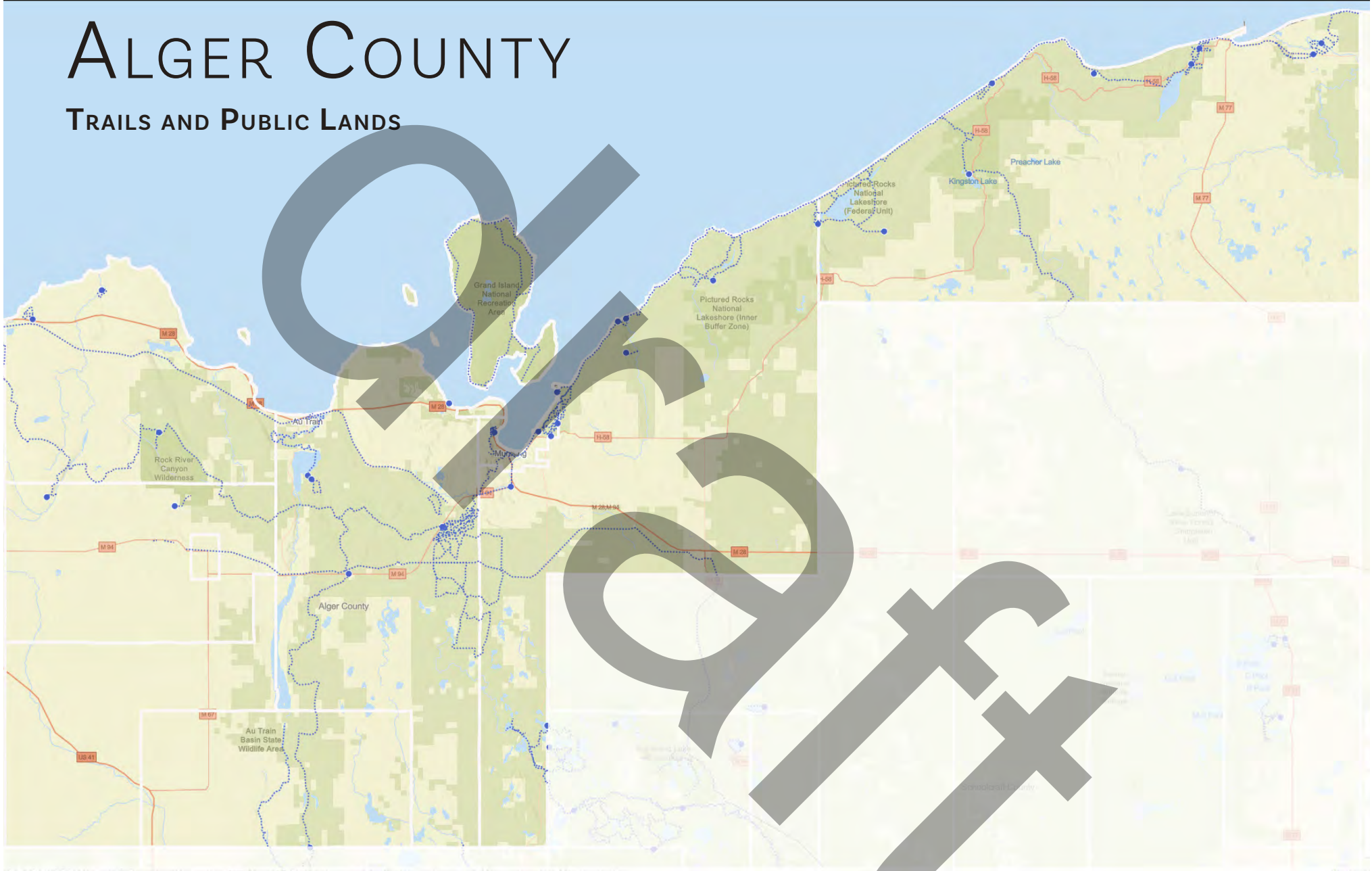
Any and all future park development pursuits by the county will strive to achieve universal access for all. Below is a DNR developed Accessibility Grading Rubric to be referenced if and when the county decides to develop its own recreational facilities.

DNR ACCESSIBILITY GRADING SYSTEM

1. None of the facilities meet accessibility guidelines
2. Some of the facilities meet accessibility guidelines
3. Most facilities meet accessibility guidelines
4. The entire park meets accessibility guidelines
5. The entire park was developed using the principles of universal design

ALGER COUNTY

TRAILS AND PUBLIC LANDS



0 2.5 5 miles



Pictured Rocks National Lakeshore consists of two zones. The Lakeshore Zone is federal land managed by the National Park Service (NPS). The Inland Buffer Zone is a mixture of federal, state, and private ownership. Please respect the rights of private landowners.

- Lakeshore Zone (NPS)
- Inland Buffer Zone (mixed ownership)
- Wilderness within Lakeshore Zone (NPS)









Beaver Basin Wilderness Congress has designated nearly 12,000 acres in Pictured Rocks National Lakeshore for protection under the 1964 Wilderness Act. Included are forests, streams, lakes, wetlands, and 13 miles of Lake Superior shoreline.

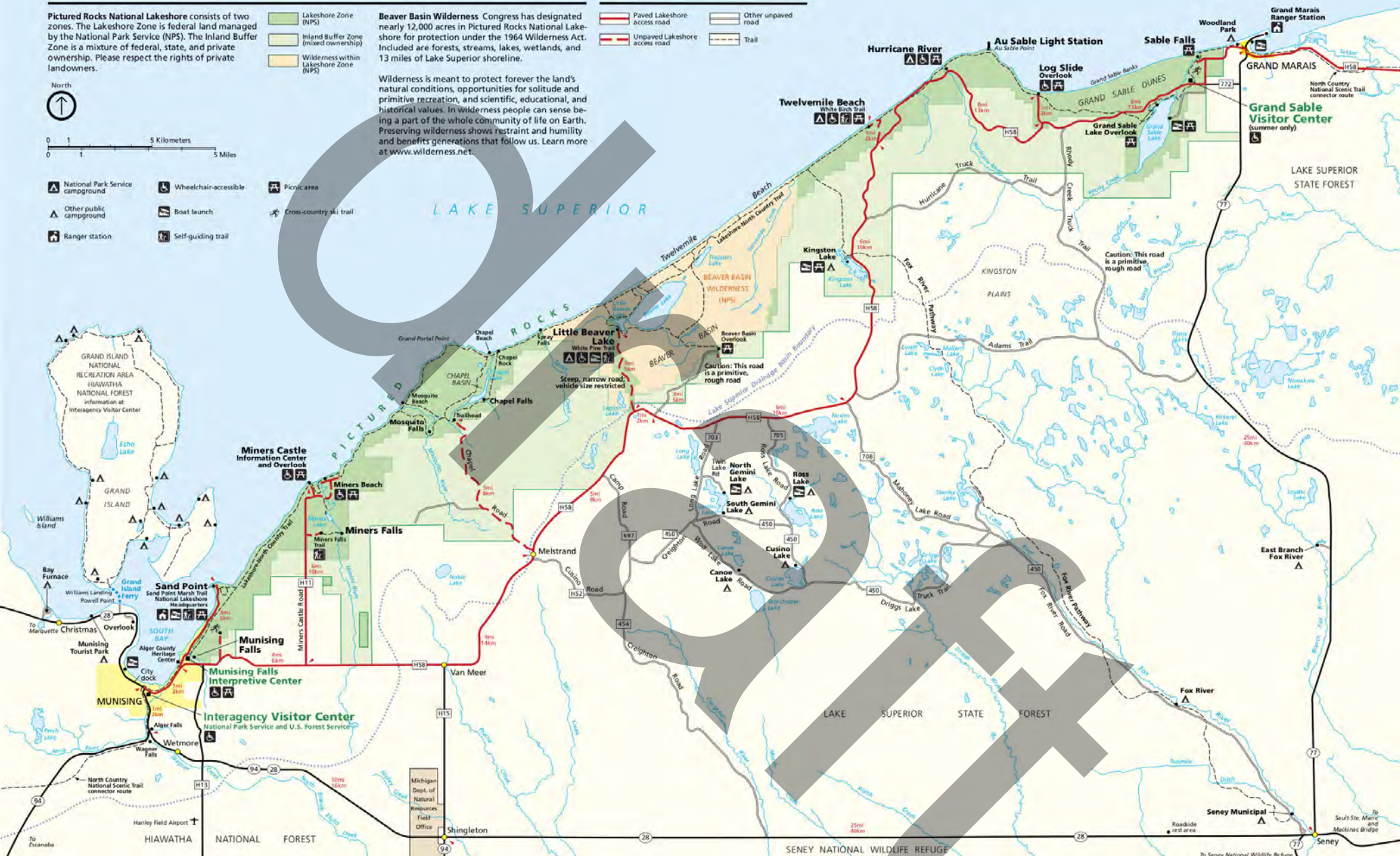
Wilderness is meant to protect forever the land's natural conditions, opportunities for solitude and primitive recreation, and scientific, educational, and historical values. In wilderness people can sense being a part of the whole community of life on Earth. Preserving wilderness shows restraint and humility and benefits generations that follow us. Learn more at www.wilderness.net.

- Paved Lakeshore access road
- Unpaved Lakeshore access road
- Other unpaved road
- Trail

North

 0 1 5 Kilometers
 0 1 5 Miles

-  National Park Service campground
-  Wheelchair-accessible
-  Picnic area
-  Other public campground
-  Boat launch
-  Cross-country ski trail
-  Ranger station
-  Self-guiding trail



PICTURED ROCKS NATIONAL LAKESHORE

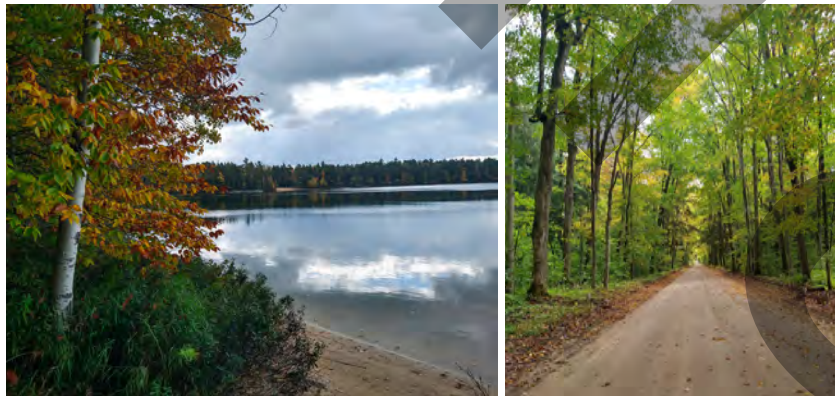
NATIONAL PARKS SERVICE MAP

PARK INVENTORY

PARKS WITHIN ALGER COUNTY

HIAWATHA NATIONAL FOREST

Hiawatha National Forest is owned and managed by the US Forest Service. It contains 880,000 acres and is divided into two subunits, the east unit and west unit. It spans Chippewa, Delta, Mackinac, Alger, Schoolcraft, and Marquette Counties. Chippewa and Mackinac counties host the east unit while the remaining counties contain the west unit. The forest's headquarters is located in Gladstone. The forest contains over 400 lakes and many rivers and streams. Hundreds of miles of trails are available to the public for hiking, mountain biking, cross county skiing and horseback riding.

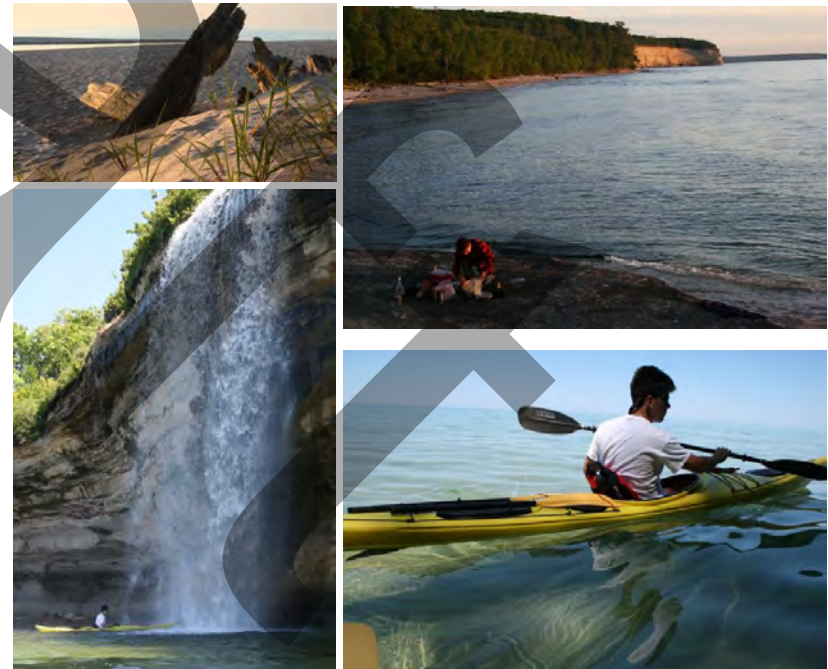


LAKE SUPERIOR STATE FOREST

Extending from Munising to Grand Marais this National Lakeshore is a spectacle of sandstone cliffs leaching 'painted' mineral streaks, rugged woodland trails, inland lakes and various camping destinations along sandy beaches. The park serves as an icon of Michigan's Upper Peninsula and is a popular destination for paddlers, sightseers, and backpackers alike. User numbers have been climbing exponentially and have risen from roughly 575,000 visitors in 2013 to 1.2 million visitors in 2021. As a result of this staggering number of visitors the park service has implemented a new entrance fee in 2022.

PICTURED ROCKS NATIONAL LAKESHORE

Extending from Munising to Grand Marais this National Lakeshore is a spectacle of sandstone cliffs leaching 'painted' mineral streaks, rugged woodland trails, inland lakes and various camping destinations along sandy beaches. The national lakeshore is managed in two zones with the Shoreline Zone, owned by the National Parks Service, including 33,929 acres. The Inland Buffer Zone is a mixture of State of Michigan and privately owned lands encompassing 39,306 acres. The park is an icon of Michigan's Upper Peninsula and is a popular destination for paddlers, sightseers, and backpackers alike. User numbers have been climbing exponentially and have risen from roughly 575,000 visitors in 2013 to 1.3 million visitors in 2021. As a result of this staggering number of visitors the park service implemented a new entrance fee in 2022 and visitation decreased to 925,685.



NORTH COUNTRY TRAIL

This multi-use, non-motorized trail extends over 4,600 miles from North Dakota to Vermont. In Alger County the trail stretches from the Deerton Sand Lake Road through the Burt Township School Forest.

HIAWATHA WATER TRAIL

This 120 mile long water trail follows the southern shore of Lake Superior from Big Bay to Grand Marais.

AU TRAIN TOWNSHIP PARK

This park features a playground roughly 1 acre in size. Amenities include:

- Parking, Basketball court, open field and playground structure

HERITAGE TRAIL AND KAYAK LAUNCH

A DNR trail for ATV's and Snomobiles parallels highway M-28 in Au Train and features a trailhead with an information center, shelter and accessible restroom and kayak launch. This property is owned by the DNR and leased to Au Train Township.



AU TRAIN LAKE CAMPGROUND **HIAWATHA NATIONAL FOREST**

The Au Train Lake Campground is located on the southern shore of Au Train Lake and is owned and managed by the Forest Service. It is located within Hiawatha National Forest. Amenities include:

- Accessible vault toilets, boat launch, 37 rustic campsites, drinking water, Songbird Interpretive Trail and lake access.

AU TRAIN RIVER ACCESS **HIAWATHA NATIONAL FOREST**

The Forest Service owns and manages several water access points along the Au Train River. Recent projects have been underway to stabilize banks, add parking and enhanced access and eventually restroom facilities. These access points are located along the Au Train Canoe Trail, a popular quiet route for paddlers.

AU TRAIN FALLS

The Au Train Falls are five miles south of Au Train and easily accessed from a parking lot and gravel road.

AU TRAIN BEACH **MICHIGAN DNR**

- A very popular summer destination the expansive Au Train Beach area is owned and managed by the DNR. Several parking areas are provided on the north side of M-28 in Au Train. The dune landscape and sand under pavement makes for a tough site to properly maintain.



SCOTT FALLS/ HJ RATHFOOT PARK

Located roughly one mile east of Au Train along M-28 there is a small picnic area with beach access. The falls are located on the opposite side of the highway. It is managed as a roadside park by the State of Michigan.

**ROCK RIVER CANYON
WILDERNESS**
HIAWATHA NATIONAL FOREST

- Two canyons, Rock River and Silver Creek, lie within the area. Each canyon is about 150 feet deep. Elevations within the wilderness range between 680 and 1,000 feet above mean sea level. At the edge of the canyons are sandstone outcrops which water and weather have transformed into caves 10 to 40 feet deep. During winter, ice curtains formed by water seeping over the canyon.

EBEN ICE CAVES
HIAWATHA NATIONAL FOREST

Located in the Rock River Wilderness area within the Hiawatha National Forest. This winter destination hosts a trail with spectacular frozen Ice Caves in the winter months.

(photo source rockrivertownship.org)



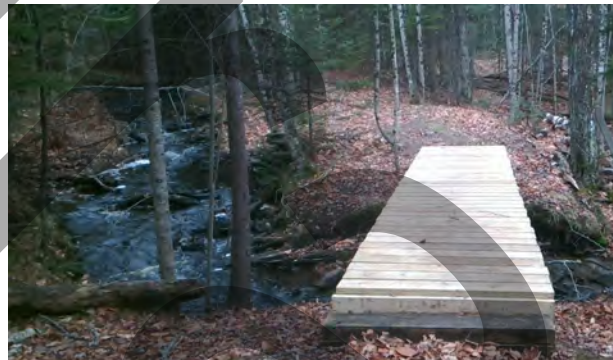
**AU TRAIN-ONOTA
SCHOOL**

- Deerton hosts a small school with a playground that features a slide, swings, and a tipi. It also has an indoor gym.

TYOGA PATHWAY

- An interpretive pathway along the Laughing Whitefish River to a historic lumber town site.

(photo source MDNR)



**DEER LAKE PUBLIC
ACCESS SITE**
MICHIGAN DNR

- Hard surface ramp, with a courtesy pier, provides access onto Deer Lake, parking for nine vehicles

**DEER LAKE ROAD-
SIDE PARK**
MDOT

- Picnic area on M-28 and Deer Lake with vault toilet, tables a beach and parking

**LAUGHING WHITEFISH
LAKE PRESERVE**
THE NATURE CONSERVANCY

- The 1,728 acre preserve includes three-quarters of the lake as well as over 1,000 acres of surrounding wetlands and upland forest. Visitors may hike the George Shiras III Discovery Trail mile long marked loop. There is an observation deck along the trail with a view of the lake.

**JOHN H. HAMMER
PUBLIC ACCESS SITE**
MICHIGAN DNR

- Gravel ramp with access to Laughing Whitefish River near the mouth of the river, parking for 6 vehicles, (the site is in need of considerable work)

ALGER COUNTY FAIRGROUNDS

- The fairgrounds are located in Chatham and feature a small play area. As noted in the surveys received this area could also benefit from some much needed updates and safety upgrades.



SUPERIOR CENTRAL SCHOOL

Superior Central School District is located in Eben Junction and serves as the region's main playground and athletic field location. It hosts a mix of play equipment, a football field, basketball court, parking and a non-motorized trail system that is groomed in winter months for cross-country skiing. As evidenced in many surveys received there is a need for updates to the playground features.



HIAWATHA SLOPES SKI HILL

HIAWATHA NATIONAL FOREST

A small tow rope ski hill open Wednesday, Saturdays and Sundays throughout the winter months. A day pass is \$5 with season passes available as well.



FOREST LAKE CAMPGROUND

MICHIGAN DNR

On the shores of Forest Lake, this rustic campground hosts paddling, fishing, and a boat launch. It is located 9.6 miles south of Au Train.

LAUGHING WHITEFISH FALLS

MICHIGAN DNR

Laughing Whitefish Falls State Park is a public recreation area with 960 acres along the Laughing Whitefish River in both Onota and Rock River Townships.

Amenities include:

- Vault Toilet
- Picnic Table
- Benches



CITY OF MUNISING AREA PARKS

COMMUNITY PARK

BAYSHORE PARK

4.5 ACRES

Situated on the harbor in Munising Bay this park serves as the centerpiece of the City's park system. This site hosts many special events including: independence day, farmer's market, + private gatherings

Amenities include:

- Pavilion with bread oven
- Accessible restrooms/drinking fountain
- Picnic tables, grills, and benches
- Underground sprinkler system
- Beachfront area
- Veteran's Memorial, gazebo, + signage



COMMUNITY PARK

CITY MARINA

4.5 ACRES

The marina is adjacent to Bayshore Park. Amenities include:

- 19 slips for boats up to 30 feet long
- 300ft of dock for broadside mooring
- 300ft of additional usable docking space
- Fuel (gasoline only), Electricity (20,30,50amp)
- Annual slip space rentals + Daily dockage rates
- Pictured Rock's Excursions operates from here
- Public parking, wayside exhibits + dock attendant



COMMUNITY PARK

MUNICIPAL BOAT LAUNCH

2.25 ACRES

The boat launch is located in the Brown's Addition area along Munising Bay. The site is planned to receive an update.

Amenities include:

- Hard surface ramp + 2 courtesy piers
- Parking capacity of 71
- Picnic area
- Accessible restrooms with concrete access path



MINI-PARK

TANNERY PARK OVERLOOK

0.33 ACRES

The overlook is located on Washington Street. It hosts a view of Lake Superior in Munising.

Amenities include:

- Picnic table
- Wooden deck overlooking the lake
- Parking area and asphalt access path



NEIGHBORHOOD PARK

BROWN'S ADDITION PLAYGROUND

0.5 ACRES

This playground is located at the corner of Portage Street and M-28 in Munising.

Amenities include:

- Inaccessible port-a-potty
- Inaccessible playground featuring slide, swings + structure
- Inaccessible picnic tables
- Shade trees
- Off street parking



NEIGHBORHOOD PARK

LYNN STREET PLAYGROUND

0.6 ACRES

This playground is paired with tennis courts and situated on a slightly sloped site leading to multiple ramps and staircases for access.

Amenities include:

- 2 fenced tennis courts
- Non-ADA picnic tables
- Accessible port-a-potty
- Playground area with sand play
- Trash cans and benches
- Ramp system to allow ADA access to the site



REGIONAL PARK

TOURIST PARK

91 ACRES

As the name suggests this is a popular tourist campground along Lake Superior's shoreline.

Amenities include:

- 126 total campsites
- 26 of which are full hook up sites
- 28 rustic camp sites on Lake Superior
- Sand beachfront
- Office for registration + snacks
- Pavilion + two buildings that house restrooms + showers
- Small playground
- City owned facility operated through a concessionaire

COMMUNITY PARK

ALGER CENTENNIAL ARENA

0.3 ACRES

A 24,000 sqft building constructed in 1985 this facility has a commanding presence at 110 East Varnum Street.

Amenities include:

- Kitchen and concession area
- Changing rooms and accessible restrooms
- Seasonal ice rink
- Artificial ice making ability
- Rented for group gatherings
- Mainly utilized by local hockey program with some free skate hours available in the winter
- City took over operational responsibility in 2007

NEIGHBORHOOD PARK

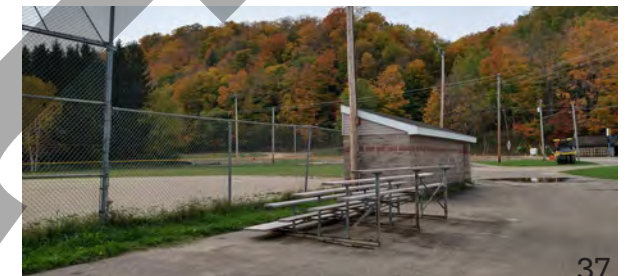
HEROES FIELD

2.75 ACRES

A baseball field adjacent to the Municipal Boat Launch.

Amenities include:

- Storage + accessible restroom building
- Portable bleachers
- Concrete dugouts, backstop + lights
- Underground sprinkler system
- Converted to skate rink in the winter



MINI-PARK

SKATE PARK

0.3 ACRES

Located across from the Alger Centennial Arena on Varnum Street. This property was donated to the City.

Amenities include:

- Move-able ramp features for a flexible layout, Asphalt surface and fencing



COMMUNITY PARK

ANNA RIVER BOAT LAUNCH

7.87 ACRES

This boat launch is located on Neenah Paper Company and DNR property at the mouth of the Anna River and is managed by the City. Requests to improve this launch site for kayaks were received from the community.

Amenities include:

- Hard surface ramp into the river
- Accessible restrooms + picnic tables
- Accessible fishing pier + kayak launch
- Parking capacity of 62



COMMUNITY PARK

MUNISING BAY MOUNTAIN BIKE TRAILHEAD

51 ACRES

Situated on the edge of town along Hwy M-28 this trailhead serves as a starting point for 4-seasons of recreation. Snow biking, mountain biking, hiking and trail running are all permitted on the constantly improving trail system. A pump track was recently added to the site as well.

Amenities include:

- Vault toilet
- Trailhead kiosk and signage
- Picnic tables
- Parking area
- Bike fix it station



KID'S CONNECTION PLAYGROUND

This playground is located on Munising Public School property and is managed by the school system. It features an intricate network of wooden ramps, climbers and play features.

Amenities include:

- Fenced in playground
- Open from 8AM-10PM
- In good condition although there are some features that need to be repaired



R.W. NEBEL FIELD

The facility is at the end of Park Street at Varnum Street and serves as Munising High School's recreation complex.

Amenities include:

- Track, football field, soccer field, parking
- Lights, bleachers, storage + accessible restrooms
- A trail follows the western edge of the site

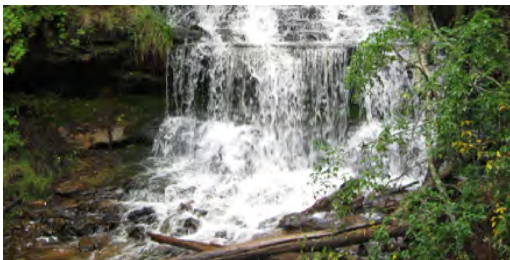


WAGNER FALLS MICHIGAN DNR

Located 1.5 miles south of Munising on M-94 and Wagner Creek.

Amenities include:

- MDNR property
- Short walking trail begins at the parking area and leads to a series of small waterfalls



HORSESHOE FALLS

Accessed from Bell Ave in Munising.

Amenities include:

- Privately owned
- Small admission fee required
- Open from May 1- October 1

ALGER FALLS

Located about 1 mile south of Munising at the M-28/M-94 junction along Alger Creek.

Amenities include:

- Waterfalls cascade down about 30' of rock
- Easily visible along the east side of M-28
- No safe parking options are currently available

PICTURED ROCKS INTERPRETIVE CENTER NATIONAL PARKS SERVICE

Located in a historic building at the corner of M28 and Elm Ave. The site includes a gift shop and self guided interpretive tour.



GRAND ISLAND SCENIC TURNOUT

Just past the western edge of the City limits.

Amenities include:

- MDOT rest area
- Vaulted toilets, drinking water, picnic table, and info
- Short path leading to an overlook of Grand Island

GRAND ISLAND HIAWATHA NATIONAL FOREST

An island located in Munising Bay.

Amenities include:

- Land acquired from Cliffs Natural Resources in 1990
- Island is accessible by private boat or the Forest Service ferry
- Visitors can hike, camp, fish, sightsee, bike, kayak and swim
- Altran provides a bus tour of the island June-October
- All but 44 of the Island's 13,500 acres are part of Hiawatha National Forest
- 23 miles of trail for biking and hiking follow the shoreline
- Campsites include fire rings, picnic tables + bear poles, and cabins are available for rent
- Day use area at Murray Bay including toilets, benches, and grills

MUNISING ORV/ SNOWMOBILE TRAIL

The Munising Trail branches from the Christmas Trail south of Christmas and extends through the City's highlands before entering the residential area at Brook and Prospect Streets. A separate spur enters the City via Jasper Avenue.

Amenities include:

- Heavy use in winter months
- Snowmobiles are permitted to use designated City roadways with restrictions applied to speed as well as hours of operation; Requests to not allow snowmobiles on city streets was made several times in the community surveys.

**PICTURED ROCKS NATIONAL
LAKESHORE**
NATIONAL PARKS SERVICE

Extending from Munising to Grand Marais this National Lakeshore is a spectacle of sandstone cliffs leaching 'painted' mineral streaks, rugged woodland trails, inland lakes and various camping destinations along sandy beaches. The park serves as an icon of Michigan's Upper Peninsula and is a popular destination for paddlers, sightseers, and backpackers alike. User numbers have been climbing exponentially and have risen from roughly 575,000 visitors in 2013 to 1.2 million visitors in 2021. As a result of this staggering number of visitors the park service has implemented a new entrance fee in 2022.

**MNA MEMORIAL
FALLS**

MNA Memorial Falls is named for the hundreds of past Michigan Nature Association members who contributed to the association. Located just to the West of Nestor Street in Munising this falls, paired with Rudy Olson Memorial Falls, is located right within town and show the effects of frequent visitation. Recent trail improvements were planned for summer 2021 leading to the closing of the falls until late 2022. The improvements included rerouting trails to reduce erosion, installing new trailhead infrastructure and upgrading signage.

The falls are seasonal and therefore can be viewed during spring snow melt or following a heavy rainstorm.

**RUDY OLSON
MEMORIAL FALLS**

Rudy Olson Memorial Falls previously named Tannery Falls was renamed in honor of this Michigan Nature Association member. Located just to the West of Nestor Street in Munising this falls, paired with MNA Memorial Falls, is located right within town and shows the effects of frequent visitation. Recent trail improvements were planned for summer 2021 leading to the closing of the falls. The improvements included rerouting trails to reduce erosion, installing new trailhead infrastructure and upgrading signage.

The falls are seasonal and therefore can be viewed during spring snow melt or following a heavy rainstorm.

SAND POINT BEACH
NATIONAL PARKS SERVICE

Located along the shores of Lake Superior just east of Munising and is part of Pictured Rocks National Lakeshore.

Amenities include:

- Undeveloped sand beach
- Beautiful sunset watching post, kayak launching site or kid's play spot
- Accessible vault toilet

**ALGER COUNTY
HERITAGE CENTER**

Located on Washington Street in Munising the Heritage Center is located in a former school building and offers exhibits featuring local history, artifacts, photos and guided tours.



BAY FURNACE CAMPGROUND

HIAWATHA NATIONAL FOREST

Hosted by the US Forest Service, Bay Furnace Campground is located along Lake Superior 5 miles west of Munising on M-28 in Christmas.

Amenities include:

- 46 Rustic Camp Sites
- Historic roads to historic furnace
- Large day use area with several picnic sites and access to rocky beach

(photo source recreation.gov)



PICTURED ROCKS GOLF + COUNTRY CLUB

Located east of the City along H-58.

- 18-hole course, 6,296 yards of golf from the longest tees, Par 71, Front 9 opened in 1968, Back 9 opened in 1995, Practice putting green, Driving range, Restaurant/bar, Rental clubs, Lessons and Pro shop

VALLEY SPUR HIAWATHA NATIONAL FOREST

Located along M-94 about 5 miles southwest of Munising.

Amenities include:

- Year-round non-motorized, multi-use trail system with great community support
- 12 groomed and marked cross country ski trails that cover 42 miles
- Rental equipment and food available in warming shelter
- Grooming and maintenance as well as lodge operations are the responsibility of the non-profit group, Friends of Valley Spur
- 13+ miles of mountain bike trails available with new trails under constant development
- All trails shared with hikers

ROBERT MCQUISTEN MUNISING TOWNSHIP RECREATIONAL AREA

A 28 acre park located in Wetmore.

Amenities include:

- Little League Field, Two full basketball courts, Playground, Pavilion, Bog Walk, Kids mountain bike loop, Munising Township Building was designed and constructed to meet all applicable accessibility standards

SHINGLETON COMMUNITY PARK

This ten acre site is surrounded by state land in Shingleton. The current recreation plan calls for park upgrades.

Amenities include:

- Softball diamond, tot lot, basketball court, community building, and parking.

ALGER COUNTY UNDERWATER PRESERVE

113 square mile area declared as an Underwater Preserve by the MDNR in 1981. 13 dive sites designated where varying features can be viewed at depths from 6' to 100'. Sunken ships, large colorful rocks and sea caves.

Shipwrecks include:

- BERMUDA, MANHATTAN, HERMAN H. HETTLER, SMITH MOORE, SUPERIOR KIOWA, STEVEN M. SELVICK- intentionally sunk steel tug as a dive site

WETMORE COMMUNITY PARK

A .75 acre park located in Wetmore adjacent to the Munising Township Complex site.

Amenities include:

- Tennis courts, ½ basketball court, tot lot

ISLAND LAKE CAMPGROUND HIAWATHA NATIONAL FOREST

This small rustic campground features a small boat slip and fishing.

Amenities include:

- Fee station, accessible vault toilets, hand pump, grills/fire rings, and picnic tables

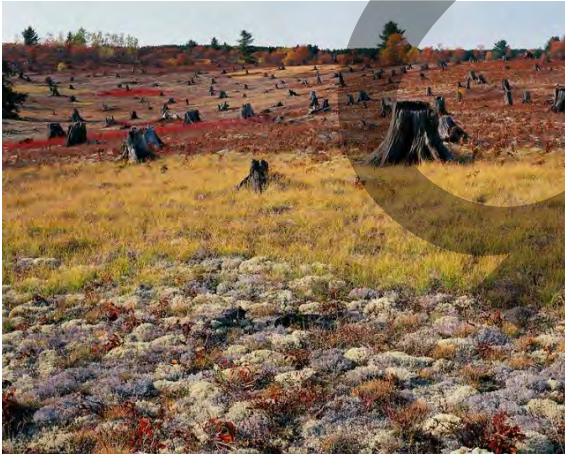
SAULT TRIBAL COMMUNITY CENTER

The Sault Tribal Community Center features a small walking track on the third floor of the facility. It was open to the public prior to the pandemic and may still be open to the public on a limited basis.

KINGSTON PLAINS MICHIGAN DNR

Located between Munising and Grand Marais the Kingston Plains is a vast landscape of stumps, remnants of a bygone logging era and past fire.

(photo source MDNR)



WOODLAND PARK CAMPGROUND

A very popular campground located within Grand Marais along the shores of Lake Superior.

Amenities Include:

- Fish cleaning station, laundromat, bathhouse, playground, and basketball court.



FRANK MEAD COMMUNITY CENTER

This center serves as a meeting space as well as an event venue for family gatherings, exercise classes, the Great Lakes Sea Kayak Symposium, and U.P. 200 Sled Dog Race.

DONAHEY WOODS

This 25 acre wilderness area is on the western edge of the Woodland Park Campground and features a nature trail.

AGATE BEACH

A public beach on Lake Superior popular with rock and agate collectors and well as sunset watching. Features a boardwalk.



GRAND MARAIS MUNICIPAL DOCKING FACILITY

Located within the 61 acre harbor of refuge in Grand Marais. Open from May through October.

Amenities include:

- Restroom, boat launch, water and electric hookups, fuel for boaters.



BAYSHORE PARK

Located in the town center of Grand Marais. The 5 acre park offers a 5 acres swim beach on the shores of Lake Superior.

Amenities include:

- Playground, volleyball court, restrooms and bathhouse, and pavilion/bandstand.

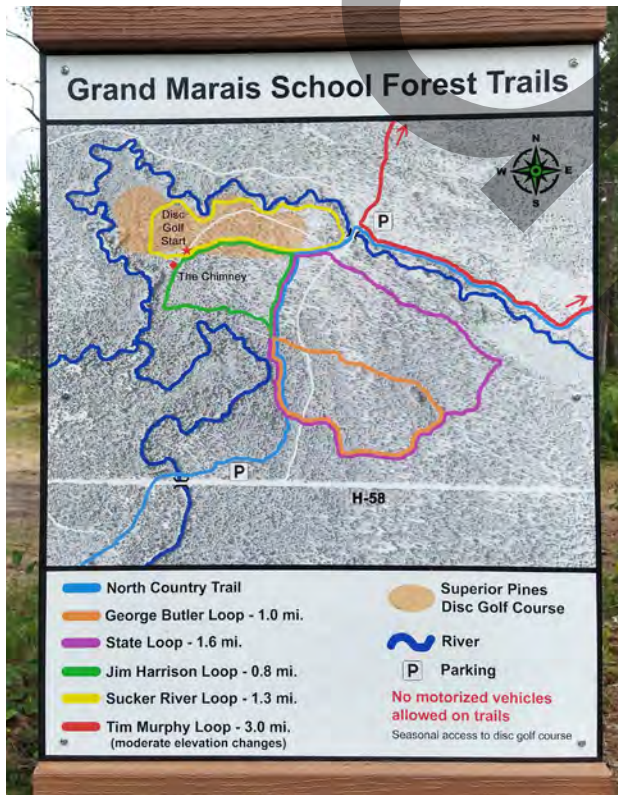


GRAND MARAIS HISTORIC SITES: LIGHTHOUSE KEEPER'S MUSEUM, PICKLE BARREL MUSEUM, COAST GUARD POINT PARK, GITCHEE GUMEE MUSEUM, POST OFFICE MUSEUM



BURT TOWNSHIP SCHOOL FOREST

At just under 1,300 acres, Burt Township School Forest is the largest of its kind in the state. The trails are popular hiking spots for locals while the river serves as a popular fishing destination. An 18 hole disc golf course is also located on the property and maintained by the school. The North Country Trail passes through the school forest.



EDWARD T. WARREN PARK

This Grand Marais Park overlooks the harbor and serves as a public green space with a small pavilion.

6

Comments + Issue Scoping CITIZEN SURVEY

A parks and recreation survey was launched in September of 2022. The survey was shared via multiple methods including online links and print outs at the Alger County Recreation Department website and recreation center. 203 completed surveys were received.

The feedback garnered was extremely informative and helped in generating recreation values, goals and priority improvements for the community. The pie charts on the right illustrate the age distribution of survey participants and the county in general. A relatively diverse mix of age groups were captured in the surveys submitted and nearly all of the responses came from nearby and local year-round residents.

The colorful bubbles within this chapter feature written responses received. They highlight specific reactions community members had including:

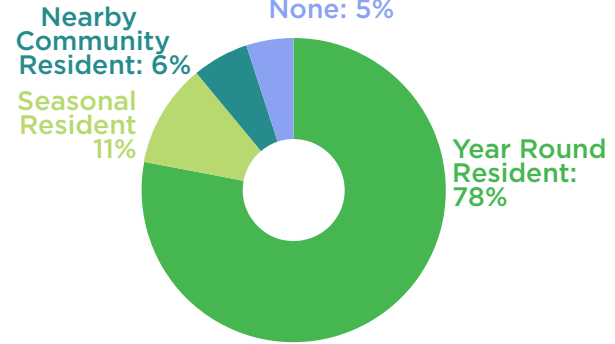
VALUES

“FEDERAL, STATE AND LOCALLY OWNED LAND FOR PUBLIC USE.”
-SURVEY PARTICIPANT

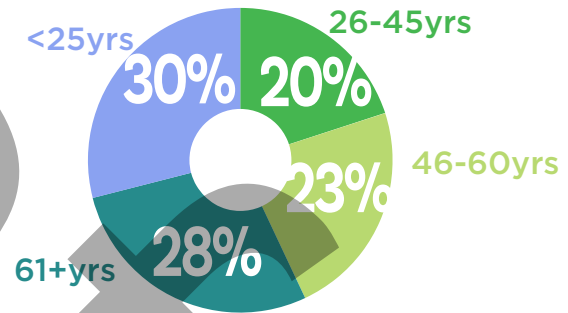
“WE SPEND MOST OF OUR TIME OUTSIDE, ON DIRT ROADS, IN DEEP WOODS, IT IS THE REASON FOR EACH DAY. NATURE IS THE VALUE OF LIFE.”
-LOCAL RESIDENT

“THE BEAUTY OF UNTOUCHED NATURE, SOLITUDE, EXERCISE.”
-LOCAL RESIDENT

RESIDENCY

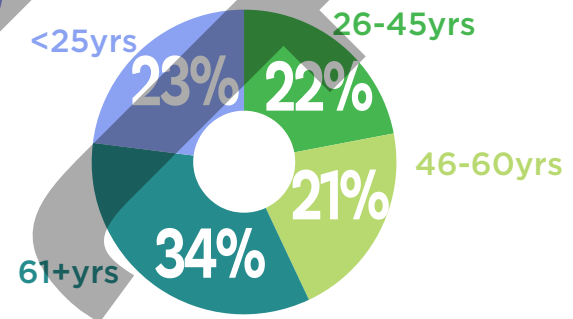


AGE | SURVEY



AGE | 2020

Source: US Census ACS Data



RECREATION ACTIVITIES

Survey participants were asked to list the recreational activities they participated in within the past two years. Top ranked activities included camping, walking/hiking, fishing and swimming. These reflect the activities offered within the county parks. It is also evident the community is eager to utilize any recreational resources and amenities provided.

The draft of the recreation plan was released for a 30 day public comment period and the parks and recreation committee then hosted a public hearing to record any additional comments from the community.

The following chapter highlights community values received from survey responses and goals the parks and recreation committee generated reflecting these values. A future project list was then generated from responses to the survey question *“What would you like to change about Alger County’s recreation opportunities?”*



LESS FREQUENT MENTIONS:

- 3 - GOLF
- 3 - SOFTBALL
- 3 - ICE SKATING

* NUMBERS INDICATE THE NUMBER OF TIMES MENTIONED IN THE SURVEY RESPONSES



7 Values, Goals + Objectives

COMMUNITY GENERATED VALUES

The word diagram to the right illustrates the values survey participants listed when asked to note what they valued about recreation opportunities within Alger County. The larger the font, the more common the response was.

Benefit the Community⁽⁸⁾ Non Commercialized⁽⁴⁾

Open Free Space⁽¹⁸⁾ The Fair⁽⁵⁾

Opportunity to be Outside⁽²⁰⁾

Family Time⁽⁵⁾ Free or Reasonably Priced⁽¹²⁾

Access⁽³⁷⁾ Variety in

All Seasons⁽²⁴⁾ Pristine⁽¹⁷⁾

For Everyone⁽¹⁷⁾ Fun⁽⁹⁾ Safe + Clean⁽¹¹⁾ Water⁽⁸⁾

Quiet + Peaceful⁽³⁵⁾

Trails⁽¹⁷⁾ Natural Beauty⁽³³⁾ Exercise + Wellness⁽¹⁰⁾

Solitude⁽¹⁰⁾ Nothing⁽⁵⁾

Freedom to Explore⁽³²⁾

Hunting + Fishing⁽¹²⁾ Kid Friendly⁽⁸⁾

VALUES

“IT IS WHY I CAME BACK TO MY HOMETOWN TO LIVE AND RAISE MY FAMILY AND WHY I CONTINUE TO LIVE HERE - THE RECREATIONAL OPPORTUNITIES AND LAKE SUPERIOR.”

-LOCAL RESIDENT

“SPACE TO FISH ON A STREAM WITH NO ONE AROUND, THE QUIET, NO TRASH.”

-SURVEY PARTICIPANT

“IT IS RIGHT BY MY HOUSE AND I GET TO SPEND TIME WITH MY DAD.”

-LOCAL RESIDENT

“BEAUTY OF NATURE, NOT HIGHLY REGULATED, WELL CARED FOR.”

-SURVEY PARTICIPANT

COMMUNITY VALUES

PUBLIC COMMENTS

With inspiration from the survey responses received, a clear definition of community recreation values emerged. The chart below highlights the key values as expressed by survey participants:

“**OUTDOOR ACTIVITY IS THE MAIN COMPONENT OF LIVING HERE. WE SPEND MOST OF OUR TIME OUTSIDE, ON DIRT ROADS, IN DEEP WOODS, IT IS THE REASON FOR EACH DAY. NATURE IS THE VALUE OF LIFE.**”

-LOCAL RESIDENT

VALUES

- We VALUE the pristine landscape that's free and accessible to everyone.
- We VALUE having peaceful places to experience the natural beauty of the region right out our front door.
- We VALUE having the opportunity to spend time outside all year round.

STATEWIDE RECREATION GOALS

STATEWIDE COMPREHENSIVE OUTDOOR RECREATION PLAN

Michigan's Statewide Outdoor Recreation Plan (SCORP) serves as the backbone for recreation planning within the state. Every five years new surveys are administered, sites studied and outdoor recreation habits mapped. Through developing a clear understanding of how people recreate within Michigan we can help define how to provide additional access and amenities for those utilizing the parks within our communities.

The main objectives outlined in the current SCORP plan:

- Foster stewardship and conservation
- Improve collaboration between stakeholders
- Raise awareness of outdoor recreation opportunities
- Improve recreational access for all
- Provide quality experiences
- Enhance health benefits
- Enhance prosperity via supporting economic prosperity, talent retention and high quality of life

RECREATION TRENDS

Nationally, many of the more traditional recreation activities, such as camping and fishing, have seen a slight decrease while nature based and backcountry activities are on the rise. Some of these trending activities include:

- Hiking
- Backpacking
- Kayaking
- Cross-country skiing
- BMX/Mountain biking
- Stand-up Paddling

Many passive recreation activities are also very popular, as noted in the SCORP surveys including relaxing, walking, picnicking, and unstructured play.

SCORP GOAL

Protect and manage Michigan's diverse and abundant natural and cultural assets to provide relevant, quality experiences that meet the fun, relaxation, and health needs of Michigan's residents and visitors and support economic prosperity.

-SCORP 2018-2022

COMMUNITY GOALS

GOAL 1 | Keep it peaceful

Alger County has an abundance of natural resources and variety of opportunities for residents and tourists to recreate. It's time we get a handle on the influx of tourists, misuse of facilities, and overtaxed recreation infrastructure.

OBJECTIVES

- **SEPARATE MOTORIZED AND NON MOTORIZED TRAILS. CLEARLY MARK AND REGULATE THESE.**
- **DESIGNATE AREAS WHERE HUNTING ISN'T PERMITTED.**
- **MONITOR TRAIL USAGE, PARKING IN RECREATIONAL AREAS AND DETERMINE IF LIMITS NEED TO BE ESTABLISHED FOR DAILY VISITOR NUMBERS.**
- **DEVELOP A CLEAR LEAVE-NO-TRACE MESSAGE AND EDUCATE VISITORS AND RESIDENTS ALIKE.**

GOAL 2 | More for youth to do

Kids within Alger County are surrounded by a vast landscape with wild places to explore, but limited infrastructure that provides safe access to these places. Promote updating and enhancing existing kid friendly recreation amenities.

OBJECTIVES

- **EXISTING PLAYGROUND INFRASTRUCTURE NEEDS ATTENTION, PARTICULARLY IN ROCK RIVER TOWNSHIP AND THE VILLAGE OF CHATHAM.**
- **STOCK FISH IN LOCAL WATERWAYS AND IMPROVE BOAT ACCESS.**
- **PROVIDE CAMPING AREAS FOR LOCAL RESIDENTS TO UTILIZE.**
- **CREATE AN ICE RINK.**
- **DEVELOP OFF ROAD BIKING AND WALKING PATHS THAT LINK COMMUNITIES TO SCHOOLS AND BEYOND.**
- **PROVIDE INDOOR RECREATION OPPORTUNITIES SUCH AS SWIMMING POOLS.**

GOAL 3 | Increase Trail Access

Citizens throughout the county requested additional safe access to trails.

OBJECTIVES

- PROVIDE SAFE, OFF ROAD TRAIL OPTIONS FOR BOTH MOTORIZED AND NON-MOTORIZED TRAIL USERS OF ALL AGES AND ABILITY LEVELS.
- CONNECT SCHOOLS AND COMMUNITIES WITH MULTI-USE TRAILS.
- PROVIDE TRAILHEAD INFRASTRUCTURE AND MAPS FOR TRAILS.
- DEVELOP ADDITIONAL TRAILS IF NEEDED TO PROVIDE FOR SAFE USE BY VARIOUS USER GROUPS INCLUDING EQUESTRIANS, WALKERS, BIKERS, MOTORIZED TRAIL USERS, AND ELECTRIC BIKERS.

ALGER COUNTY SURVEY RESULTS

WHAT WOULD YOU LIKE TO CHANGE REGARDING RECREATION WITHIN THE REGION?

"I SAY WE SHOULD BUILD A BETTER PLAYGROUND AT THE CHATHAM FAIRGROUND. MY BROTHERS HAVE GOTTEN WAY TOO MANY INJURES ON THE JUNGLE GYM AND THE SLIDE IT ISN'T FUN. I BELIEVE WE COULD BUILD ONE THAT IS SAFER AND MORE FUN."
 -LOCAL RESIDENT

"STOP ALL OF THE ADVERTISING AND LURING OF PEOPLE HERE AS IF OUR ECONOMY HINGES ON TOURISM INCOME. IT'S A NICE COUNTY THAT'S BEING EXPLOITED TOO FAST AS IT IS. PLEASE DON'T ADVERTISE FOR MORE TOURISTS THAN THE INFRASTRUCTURE CAN ACCOMMODATE. MUNISING IS BECOMING A TOURISM MECCA AND THE LAUGHING WHITEFISH FALLS, EBEN ICE CAVES, AU TRAIN RIVER, ETC. ARE ALL LOADED WITH MORE PEOPLE THAN CAN BE HANDLED AT TIMES."

-LOCAL RESIDENT

MORE SILENT SPORT TRAILS

- HIKING
- BIKING
- ACCESSIBLE
- CROSS-COUNTRY SKI
- EQUESTRIAN




24

17

NOTHING

FEWER PEOPLE



17

REGULATE OR REDUCE ATV AND SNOWMOBILE TRAFFIC

"LOWER SPEED LIMITS FOR SNOWMOBILERS ON RESIDENTIAL ROADS (INCLUDING RURAL RESIDENTIAL ROADS). 25 MPH WOULD BE SAFER FOR RESIDENTS WALKING ON THE ROAD EDGES, CHILDREN PLAYING, AND PETS."
 -LOCAL RESIDENT

32



UPDATE PLAYGROUNDS

"A PLAYGROUND/PARK AT THE CHATHAM FAIRGROUNDS AND BALLPARK. WE CURRENTLY HAVE NO SAFE PARK THAT IS OPEN FOR FAMILIES TO ENJOY IN THE CHATHAM, EBEN AREA."
 -LOCAL RESIDENT

28



SEPARATE QUIET AND MOTORIZED SPORTS

"DESIGNATE AREAS WHERE NOISY ACTIVITIES ARE NOT PERMITTED (SEPARATING SNOWMOBILES FROM CROSS-COUNTRY SKI AREAS)."

12



ADD PUBLIC RESTROOMS



3

PROMOTE LEAVE NO TRACE POLICY



12

MORE CAMPING



4

*NUMBERS SIGNIFY THE QUANTITY OF SURVEY RESPONDENTS WHO MENTIONED THIS POTENTIAL CHANGE.

"PLEASE DON'T EVER CHANGE THE FREEDOM WE HAVE TO ACCESS OUR DIRT ROADS WITH OUR RECREATIONAL TOYS. AS A LOCAL, WE CHERISH THIS AND WE BEHAVE. WITH THE INFLUX OF MORE TOURISTS WITH THEIR SIDE BY SIDES, THEY TEND TO GO WHERE THEY ARE NOT SUPPOSED TO."

-LOCAL RESIDENT

DON'T LIMIT MOTORIZED TRAIL ACCESS



7

“MAKE THE AREAS THAT TOURISTS GO TO NOW, BETTER EQUIPPED TO HANDLE THEM. IMPROVE THE ROADS IN THE RURAL AREAS THAT THE TOURISTS ARE TEARING UP. WE DO NOT NEED MORE TRAILS, MORE CAMPGROUNDS, WE NEED WHAT’S THERE IMPROVED. AND PROVIDE MORE FOR THE RESIDENTS, IT’S NOT ALL ABOUT THE TOURISTS.” -LOCAL RESIDENT



PROMOTE PRESERVATION



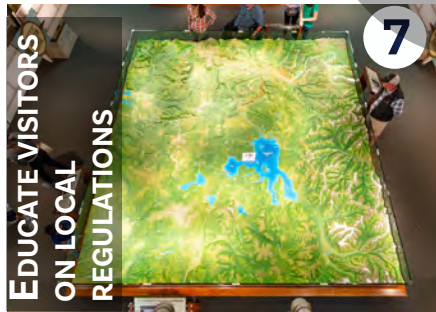
MORE EASY BIKE TRAILS



MORE AMENITIES



IMPROVED MAPS + SIGNAGE



EDUCATE VISITORS ON LOCAL REGULATIONS

MORE OPPORTUNITIES FOR TOTS THROUGH TEENS
“I WISH THERE WERE SAFE BIKE TRAILS AND WALKING TRAILS WITHIN THE AREA, AS WELL AS LOCAL PARKS, WHERE CHILDREN COULD PLAY ON PLAYGROUND EQUIPMENT, AND PICNICS COULD BE HELD.”
 -LOCAL RESIDENT



ADD A SKATE PARK/ PUMP TRACK



FEE BREAKS FOR LOCAL RESIDENTS



MORE ACCESSIBLE FOR ALL AGES + ABILITIES



MORE FUNDING FOR LOCAL PARKS



LIMIT GUIDE GROUPS

“MONITOR USAGE OF TRAILS, ROADS, PARKING. OVERCROWDING IS AN ISSUE.” -SURVEY PARTICIPANT

Less frequent mentions:

- Better cell service
- Stop advertising
- Indoor swimming pool
- More indoor winter activities
- Disk golf
- Community gathering spaces
- Better boat launches
- Better lift for the ski hill
- More kayak launches (AuTrain)
- Pickleball courts
- Ice skating rink
- Tennis courts (Onota)
- Electric bike trail rules
- Stock fish
- Community health initiatives
- Bigger marina (Grand Marais)
- regulate boat speeds
- Soccer fields (Rock River)
- Encourage electric ATV’s and Snowmobiles
- More AlTran bus service to rec sites
- Protect scenic byways
- Recycle
- Regulate AuTrain River

NORM'S CONSTRUCTION
 Norm Johnson
 N3752 South Lost Lake Road
 Wetmore, MI 49895

5523781

CUSTOMER'S ORDER NO. Phone: (906) 387-2871
 Fax: (906) 387-5229

DEPARTMENT

DATE 8-11-23

NAME

ALGER COUNTY AIRPORT "RESCUE SIDE"

ADDRESS

H-13 AIRPORT

CITY, STATE, ZIP

WETMORE MI. 49895

SOLD BY

CASH

COD

CHARGE

ON ACCT

MDSE RETD

PAID OUT

QUANTITY

DESCRIPTION

PRICE

AMOUNT

1

INSULATE BIG NORTH \$

2

WALL 14H x 40'w

3000

3

4

5

6

7

8

9

10

11

12

13

295-000 - 934.000

14

15

16

17

18

TOTAL PLEASE PAY → 3,000

RECEIVED BY



LIVINGSTON COUNTY BOARD OF COMMISSIONERS
MEMORANDUM



TO: MICHIGAN BOARDS OF COUNTY COMMISSIONERS

FROM: DAVID J. DOMAS - CHAIRMAN
LIVINGSTON COUNTY BOARD OF COMMISSIONERS

RE: DEI & CRT

DATE: AUGUST 10, 2023

Attached please find a letter the Livingston County Board of Commissioners recently sent to Area Agency on Aging 1-B (AAA) regarding our concerns with the discipline of DEI - Diversity, Equity and Inclusion.

DEI, as a branded term, yields a different meaning than one would expect from the common understanding of the individual words. The concept of value or merit is never addressed in DEI. Adding these things to DEI would be more acceptable because it would mean: "DIVERSITY that adds VALUE should be EQUITIBLY INCLUDED."

Please give our letter your due consideration and, if you have any questions or concerns, do not hesitate to contact my office.

Best regards,

DAVID J. DOMAS - Chairman
Livingston County Board of Commissioners



Livingston County, Michigan

Board of Commissioners

304 E. Grand River Avenue - Suite 201 - Howell MI 48843

David Domas, Chairman
Jay R. Drick, Vice-Chairman

Tel: (517) 546-3520
Fax: (517) 546-7266

July 28, 2023

Michael Karson, CEO & President
Area Agency on Aging 1-B
29100 Northwestern Hwy., Suite 400
Southfield, MI, 48034

Dear Mr. Karson:

We in Livingston County appreciate the many projects that you at AAA-1b organize and fund for the good of the total society. There is one item in your yearly plan that is and has been very troubling to those who serve on the Board of Commissioners for Livingston County. Your promotion of DEI is, we believe, very short-sighted. Though it may sound good, and is "required" by your funding sources, the real-life affects will be negative if followed as taught. Consider the following objections:

1. DEI is a new idea whose affects have not been time tested as the federal Civil Rights Act has been.
2. The teachings of DEI uses invented terms such as systemic racism, implicit bias, that come from critical race theory. Neither of these concepts are understood very well by the common person.
3. DEI as a branded term yields a different meaning than one would expect from the common understanding of the individual words DIVERSITY, EQUITY, AND INCLUSION. The concept of value or merit is never addressed in DEI. Adding the word "value" to DEI making it say "DVEI" would be more acceptable because it would mean: "DIVERSITY that adds VALUE should be EQUITIBLY INCLUDED." This small change would more accurately represent the naturally good meaning of these three lovely words.
4. DEI also comes up short when compared to the federal Civil Rights Act.
 - a. The Act says you CANNOT consider "X" (Race, National origin, Sex, etc.) in hiring or promotions. DEI say you MUST consider "X" (race, gender, disability, etc.) in hiring and promotion.
 - b. The Act treats people as individuals, while DEI divides people into groups (All whites have an implicit bias against all "people of color.")

c. The Act demands EQUAL OPPORTUNITY, while DEI measures OUTCOMES that are to be EQUITABLE. In that no outcome can be guaranteed, the implied goals of DEI will never be met. Human nature ensures that there will always be an oppressed group that will “need” DEI attention. DEI, therefore, guarantees a perpetual problem.

d. The Act expects that the person with the best qualifications will be chosen, while DEI falsely assumes that diversity by itself is an automatic value. (including a minority or one from a historically oppressed group is in and of itself an advantage) This over time is a disincentive to improvement.

e. The Act by itself does not support “quotas”. DEI is not satisfied until a certain percentage OUTCOME (quota) is achieved. This matter of quotas has been rejected several times by rulings of the Supreme Court.

f. The Act is much more in line with the almost universally accepted standard of justice referred to as the “Golden Rule.” This rule makes every individual responsible not only for themselves but for the well-being of every other person. The EQUITY of DEI is only in one direction. It holds that the white majority (oppressive) group is fully responsible for the condition of every disadvantaged (oppressed) group. It is only a one-way obligation. For example, only an oppressor can be “racist.” They ignore the traditional definition of racism meaning any decision based on one’s race is an act of racism (a two-way definition).

We ask that you not require nor fund training that, if followed, will put you and other companies in danger of violating the Federal Civil Rights Act’s requirement of equal opportunity.

Further, we are concerned that your implementation of DEI programs may run afoul of recently decided Supreme Court cases regarding affirmative action.^{a b}

Sincerely,



David J. Domas, Chairman
LIVINGSTON COUNTY BOARD OF COMMISSIONERS

^a Students for Fair Admissions, Inc.. v. University of North Carolina

^b <https://www.scotusblog.com/2023/06/supreme-court-strikes-down-affirmative-action-programs-in-college-admissions/>.

Scotusblog reported: By a vote of 6-3, the justices ruled that the admissions programs used by the University of North Carolina and Harvard College violate the Constitution’s equal protection clause, which bars racial discrimination by government entities.
