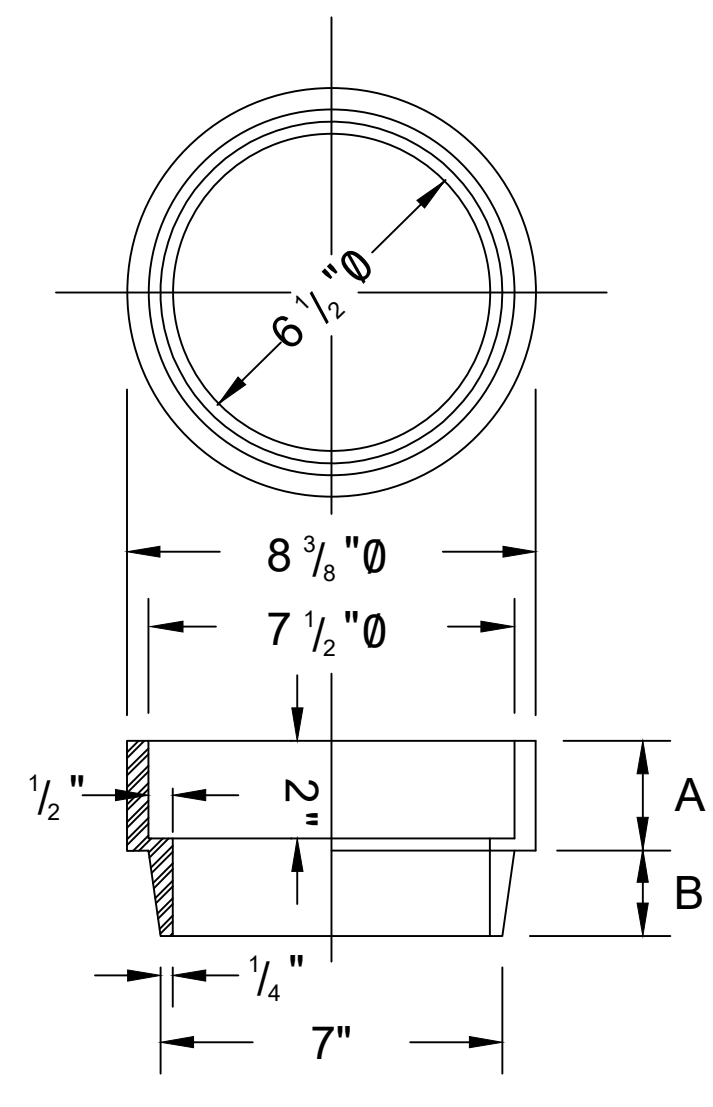
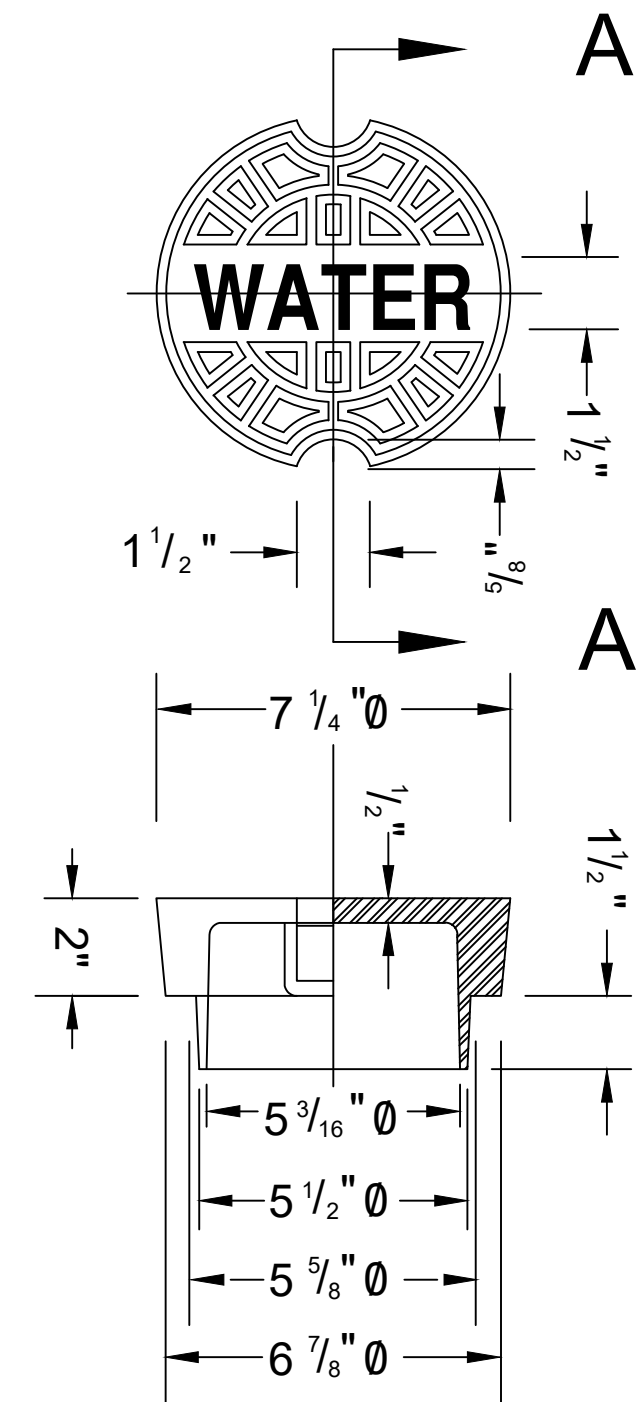


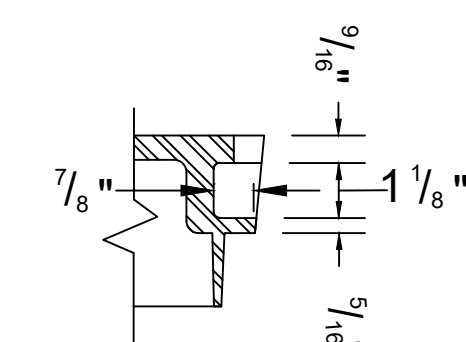
VALVE BOX RISER
1" & 1 1/2" SIZE



VALVE BOX RISER
2" SIZE & LARGER



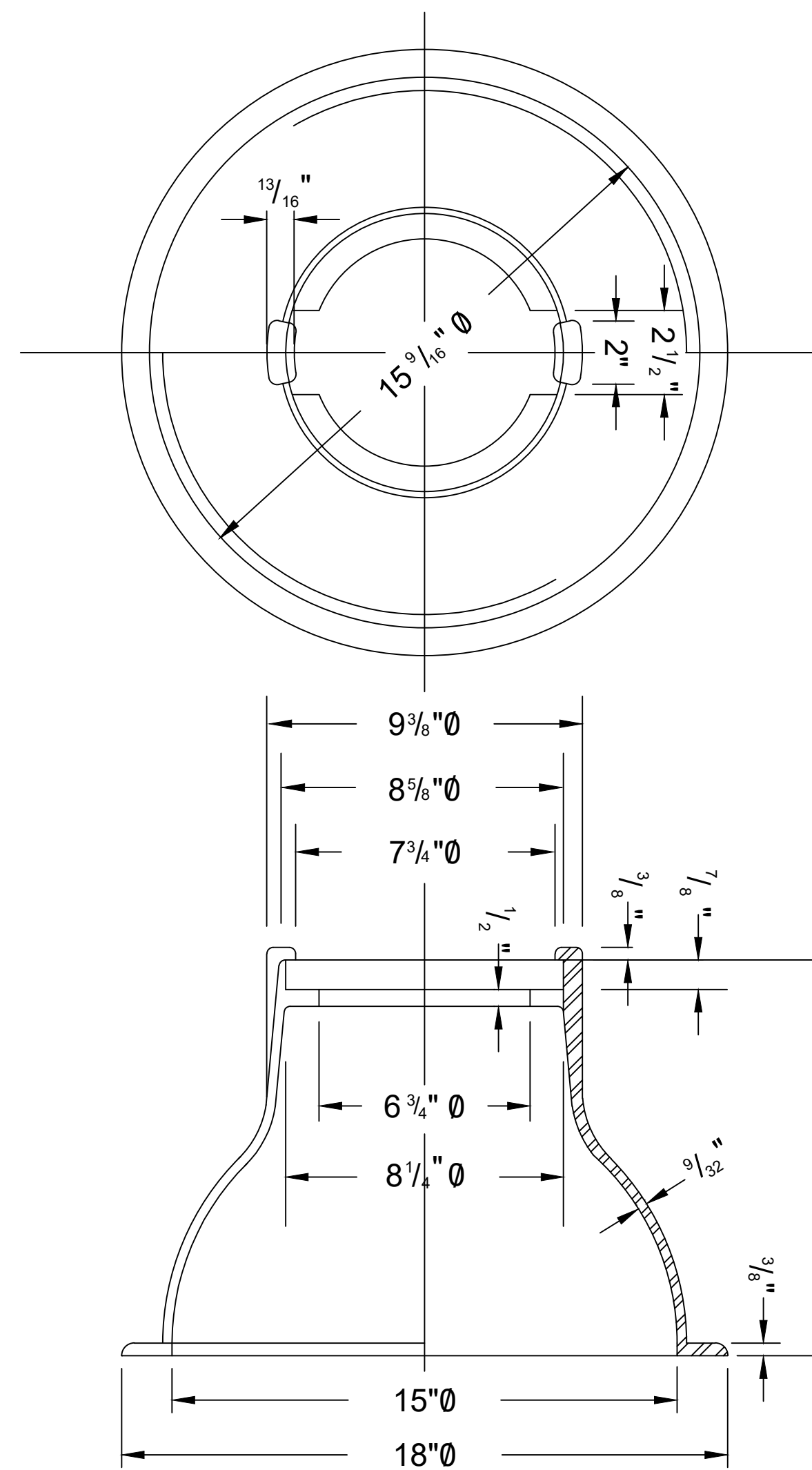
COVER
APPROXIMATE WEIGHT - 15 lbs.



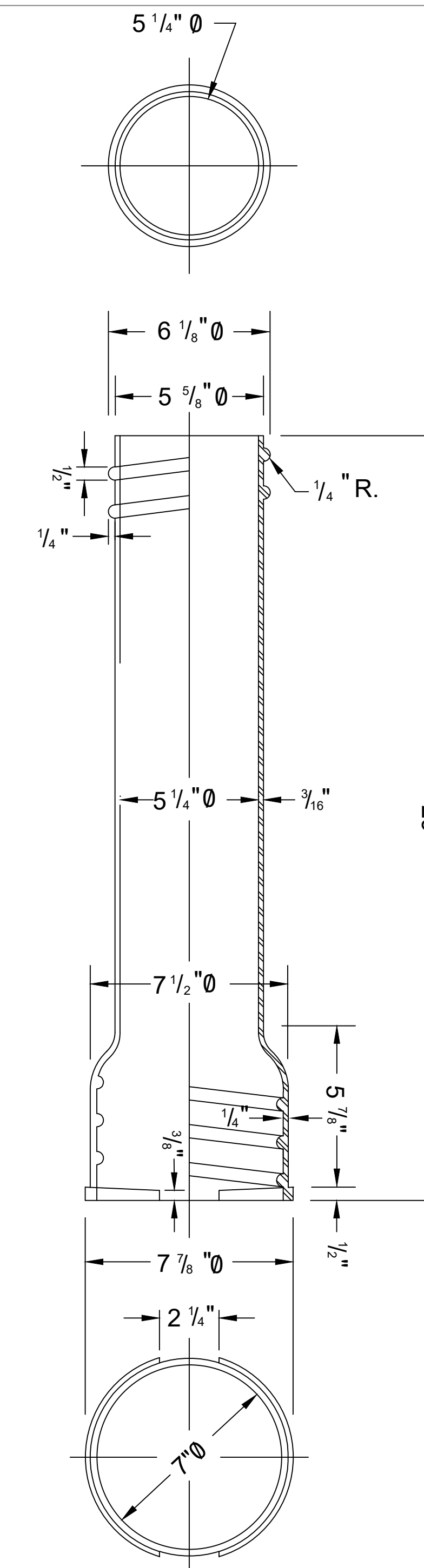
SECTION A-A

VALVE BOX RISER DIMENSIONS

SIZE	A	B
1"	1-1/4"	1-5/8"
1-1/2"	1-3/4"	1-5/8"
2"	2-1/4"	1-3/4"
3"	3-1/4"	2-3/4"
4"	4-1/4"	3-3/4"



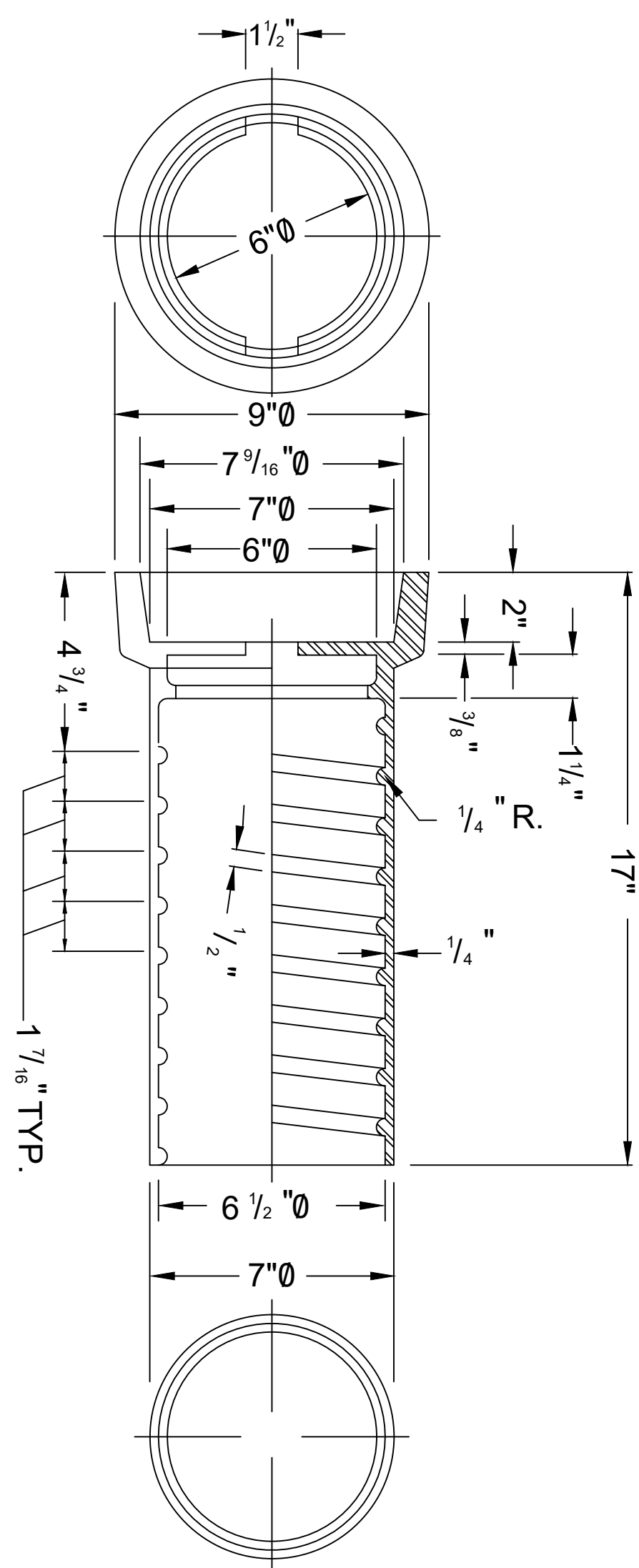
BASE
APPROXIMATE WEIGHT - 33 lbs.



29" CENTER SECTION

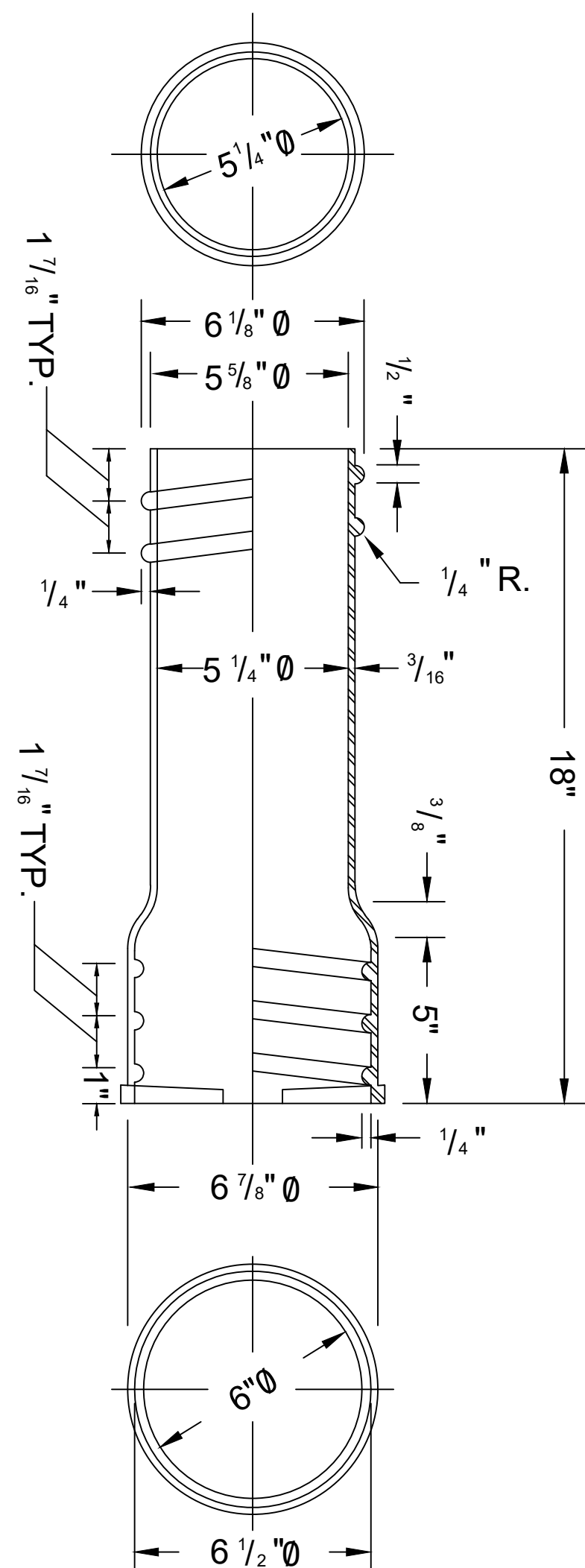
APPROXIMATE WEIGHT - 35 lbs.
NOTE: CENTER SECTIONS ALSO MADE IN 36" LENGTHS

DO NOT SCALE - USE DIMENSIONS ONLY



TOP SECTION
APPROXIMATE WEIGHT - 28 lbs.

NOTE: TOP SECTION ALSO MADE IN 24" LENGTHS.



14" EXTENSION
APPROXIMATE WEIGHT - 20 lbs.

NOTE: 10" EXTENSION ALSO MADE TO 14" OVERALL LENGTH.

VALVE BOXES AND PARTS SHALL BE MADE FROM CAST IRON MEETING LATEST REVISION ASTM A-126. EACH CASTING SHALL BE COATED INSIDE AND OUT WITH COAL-TAR PITCH VARNISH, SIMILAR TO THAT USED FOR COATING CAST IRON PIPE. APPROXIMATE WEIGHT OF BOX COMPLETE, (BASE, CENTER SECTION, TOP SECTION AND COVER) - 110 lbs. A CLEARANCE OF 3/16" SHALL BE MAINTAINED BETWEEN SECTIONS AT ALL POINTS.