

**MECHANICAL JOINT DUCTILE IRON RESTRAINING GLANDS NOTES**

EACH RESTRAINING GLAND SHALL HAVE THE FOLLOWING WEIGHTS AND HAVE NO LESS THAN THE FOLLOWING NUMBER OF WEDGES WITH AUTO-TORQUING HEADS. T-HEAD BOLTS ARE 1/2 INCH LONGER THAN NORMAL TO ACCOMMODATE THE RESTRAINING GLAND.

DIAMETER (IN.)	WEIGHT (LBS)	NO. OF WEDGES	3/4 IN. BOLT LENGTH (IN.)
4	7	2	4
6	12	3	4
8	16	4	4-1/2
10	24	6	4-1/2
12	33	8	4-1/2
16	58	12	5
20	75	14	5
24	139	16	5-1/2

THE RESTRAINING GLAND SHALL BE PROPERLY PREPARED AND COATED WITH A TGIC POLYESTER-BASED COATING. THE GRIPPING WEDGES AND ACTUATING BOLTS SHALL BE PROPERLY PREPARED AND COATED WITH A XYLAN FLUORPOLYMER COATING.

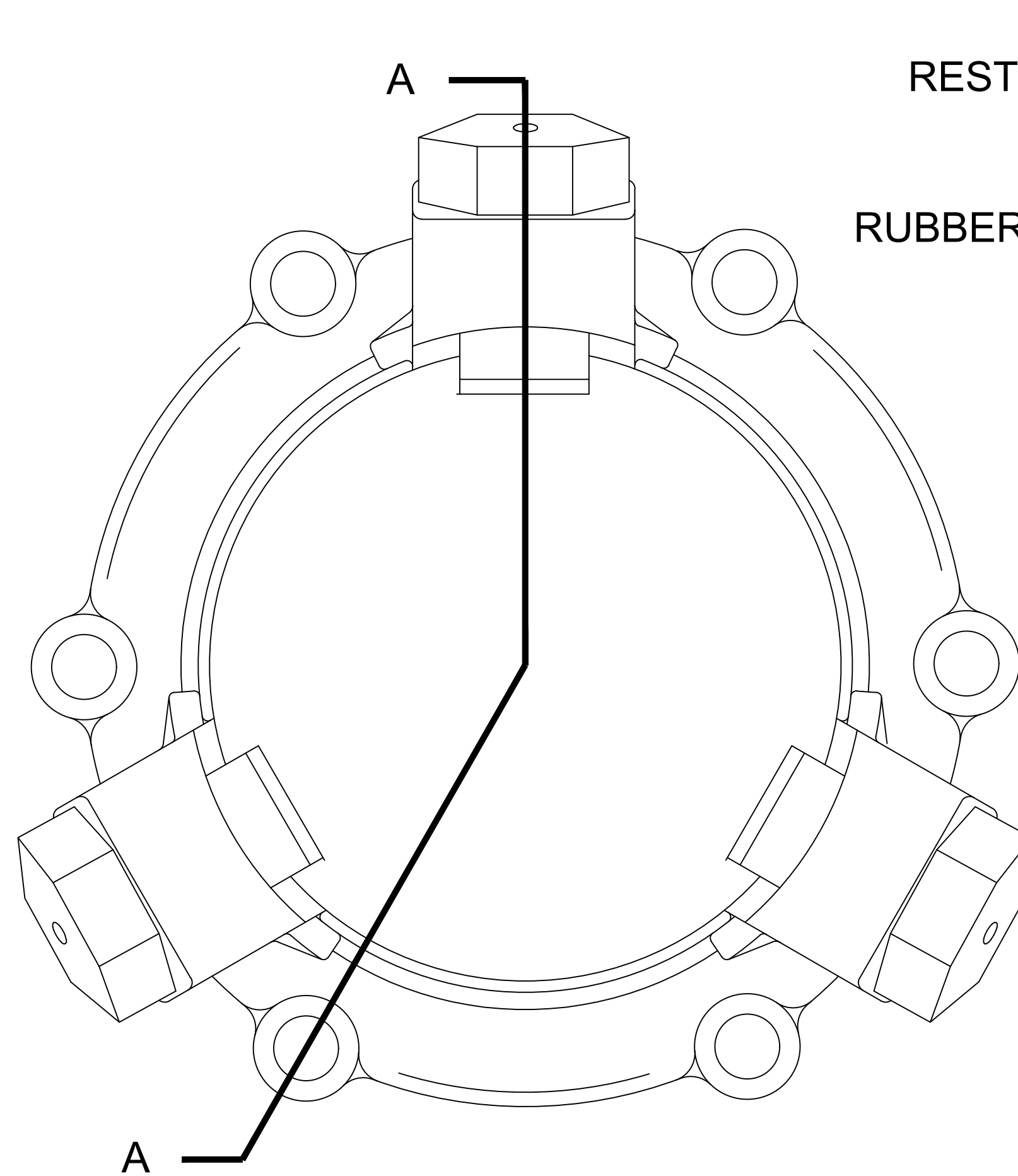
FOR QUALITY CONTROL TRACKING, AN IDENTIFICATION NUMBER INDICATING THE PLANT AND DATE OF PRODUCTION SHALL BE CAST ONTO EACH RESTRAINING GLAND.

THE RESTRAINING GLAND SHALL BE MADE OF DUCTILE IRON AND DISPLAY THE UL/FM APPROVAL.

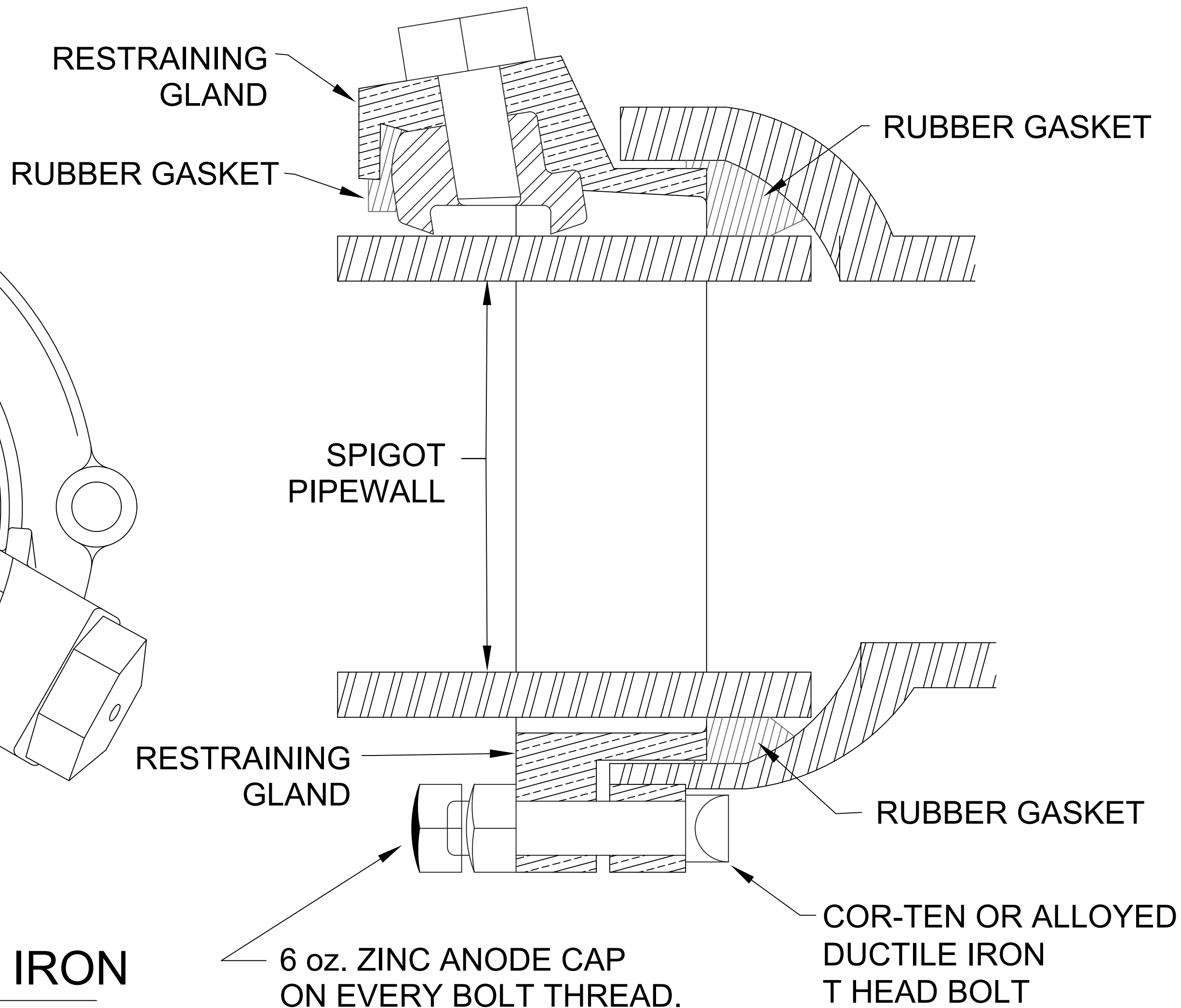
NUTS AND T-HEAD BOLTS SHALL BE CONSTRUCTION GRADE LOW ALLOY COR-TEN STEEL.

ZINC ANODE CAPS SHALL WEIGH 6 OUNCES EACH, HAVE THE PROPER THREAD DIMENSIONS FOR THE SIZE OF T-HEAD BOLTS INCLUDED IN THE GLAND PACK, MEASURE 1-7/16 INCH FLAT-TO-FLAT, AND CONFORM TO THE CHEMICAL REQUIREMENTS OF ASTM B418-88.

GASKETS MUST CONFORM TO THE LATEST REVISION OF THE AWWA C111 STANDARD FOR RUBBER-GASKET JOINTS FOR PIPE AND FITTINGS AND BE MARKED BY THE MANUFACTURER.



**MECHANICAL JOINT DUCTILE IRON RESTRAINING GLAND**



**MECHANICAL JOINT SECTION A-A**

NOTE: DUCTILE IRON RESTRAINED GLAND TO BE USED ON ALL FITTINGS DO NOT SNAP OFF MEGALUGS (BREAKAWAYS) ON CAST IRON PIPE

PIPE SIZE	WEIGHT (lbs.)
4"	7
6"	12
8"	16
10"	24
12"	33
16"	58

DO NOT SCALE - USE DIMENSIONS ONLY

CITY OF AKRON  
DEPARTMENT OF PUBLIC SERVICE  
WATER SUPPLY BUREAU

MECHANICAL JOINT DUCTILE IRON RESTRAINING GLANDS

REV. DECEMBER 13, 2023

*RAJL*  
UTILITIES ENGINEER

STANDARD CONSTRUCTION DRAWING NO.

W-5.0